



# Making the Connection



## INSIDE THIS ISSUE:

Welcome & Introduction	1
"Expansion of the USC/GHS Relationship – A Vision for the Future"	1
Why is the USC/GHS Relationship Important?	2
USC/GHS Academic Health System (AHS)	2
AHS Inter-Institutional Leadership	3
USC/GHS Specific Initiatives	4

## Welcome & Introduction

WELCOME to the first issue of "Making the Connection" – a newsletter focused on the expanded relationship between Greenville Hospital System University Medical Center and the University of South Carolina Health Sciences Division. The purpose of this

newsletter is to share information with USC and GHS internal and external stakeholders. We are pleased to serve as co-editors representing our respective institutions to provide synergy and offer opportunities for expanding our relationship. The first issue of the newsletter

is designed to give you a broad conceptual framework that will guide and support the USC/GHS relationship. Our plans are to provide a bi-monthly update via this electronic newsletter. We welcome your questions, comments and input for future issues.



**Brenda J. Thames, Ed.D.**  
*Co-editor*  
GHS Vice-President,  
Academic Development



**Russell R. Pate, Ph.D.**  
*Co-editor*  
USC Vice Provost,  
Health Sciences

*"Expansion of the USC/GHS relationship is in the best interests of both institutions and the citizens of South Carolina. Through development of interdependent programs and endeavors, the University of South Carolina Division of Health Sciences and the Greenville Hospital System University Medical Center can evolve into a model Academic Health System able to meet the present and future challenges plaguing health and health care delivery in the United States."*

– Harris Pastides &  
Jerry Youkey

## "Expansion of the USC/GHS Relationship – A Vision for the Future"

USC and GHS have a history that dates back to 1983 and has continued over the years. The mission of both institutions embodies a commitment to improving health and health care delivery for our communities. This led to the development of a document entitled "University of South Carolina (USC) and Greenville Hospital System (GHS) Relationship Roadmap – August 2007."

The "Roadmap" was developed by Dr. Jerry Youkey, GHS Vice President for Medical and Academic Services and Dr. Harris Pastides, former Vice President for Research and Health Sciences and current USC President. The document provided common understanding of the desirability for collaboration and integration of health sciences programs involving education, research, and clinical

care, among a university and an integrated health care system. It is specifically intended to establish the case for expansion of the USC/GHS relationship into a model focused on continued transformation of health care delivery. Therefore, it is by design that today USC and GHS have entered a formal agreement to expand the relationship.

## Why is the USC/GHS Relationship Important?

Expansion of the USC and GHS relationship positions both institutions to develop uniquely focused models that will improve health and health care for citizens	across South Carolina and beyond. The overall “umbrella” for the relationship will be the integrated university and hospital Academic Health System. Together, the	two institutions are positioned to partner in a manner that will <u>expand</u> the USC/GHS relationship while maintaining sufficient freedom to support their respective	missions. The uniquely aligned university/hospital model for advancing health care will foster inter-institutional collaboration.
--	--	--	---

### The USC/GHS Academic Health System will . . .

- Provide the construct for a long term formal USC/GHS relationship;
- Coordinate USC research and education initiatives with GHS clinical programs;
- Support workforce development;
- Leverage University resources in Columbia with Clinical resources in Greenville; and
- Build together the reputations and expertise of GHS and the USC Health Sciences Division.

## USC/GHS Academic Health System (AHS)

USC and GHS believe that a properly structured and operated Academic Health System offers opportunities to better accomplish the mission and vision of each entity by offering opportunities to draw upon their strengths.	USC and GHS believe that the promise offered by an Academic Health System is to find new and better ways to discover and share knowledge that will improve the quality of patient care; educate and train future health	care professionals; bring new technologies and knowledge to the treatment of patients; and improve the health status of our communities; and support the economic growth of our communities. Through the seamless	integration of academe’s traditional mission of research and education with the hospital’s traditional responsibilities for clinical care, we can advance health and health care across South Carolina.
--	---	---	---

*“Academic Health Systems embrace the thought that it is not research and education versus clinical care, but how to be more effective and efficient in all areas.”*

Source: *The Value of the Academic Health System*

– Dennis Archambault

**AHS Inter-Institutional Leadership**

An **Oversight Committee** and **Executive Committee** with USC/GHS membership have been established to lead the expansion of the relationship.

**Oversight Committee** - responsible for managing the AHS and holding accountable the Executive Committee for the development and implementation of the AHS. The initial members of the Oversight Committee are:



**Michael C. Riordan**  
GHS President and CEO



**Jerry R. Youkey, MD**  
GHS Vice President for  
Medical and Academic  
Services



**S. Hunter Howard, Jr.**  
GHS Board Member



**Rita M. McKinney**  
GHS Board Member



**Harris Pastides, PhD**  
USC President



**William T. "Ted" Moore, PhD**  
USC Executive Vice President  
for Academic Affairs & Provost  
(Interim)



**John C. Von Lehe, Jr.**  
USC Board Member



**Mack I. Whittle, Jr.**  
USC Board Member



**Andrew A. Sorensen, PhD**  
President, Institute for  
Advancement of Health Care  
(non-voting member)



**Donald J. DiPette, MD**  
USC Vice President for  
Medical Affairs  
(non-voting member)

**Executive Committee** - responsible for developing and recommending to the Oversight Committee for its approval the AHS strategic plan, establishing priorities for AHS, and reviewing and approving the annual budget. The initial members of the Executive Committee are:



**Brenda J. Thames, EdD**  
GHS Vice President for  
Academic Development



**Russell R. Pate, PhD**  
USC Vice Provost for  
Health Sciences



**Robert E. McKeown, PhD**  
USC Chair,  
Department of Epidemiology  
and Biostatistics



**Matthew F. Hudson, PhD**  
GHS Director,  
Total Health Research

**Director**  
Institute for Advancement  
of Health Care  
(To Be Hired)

*The AHS is the inter-institutional framework which will integrate various elements of USC and GHS. The Oversight and Executive Committee comprise leaders from USC and GHS to ensure alignment with the mission and goals of both institutions.*

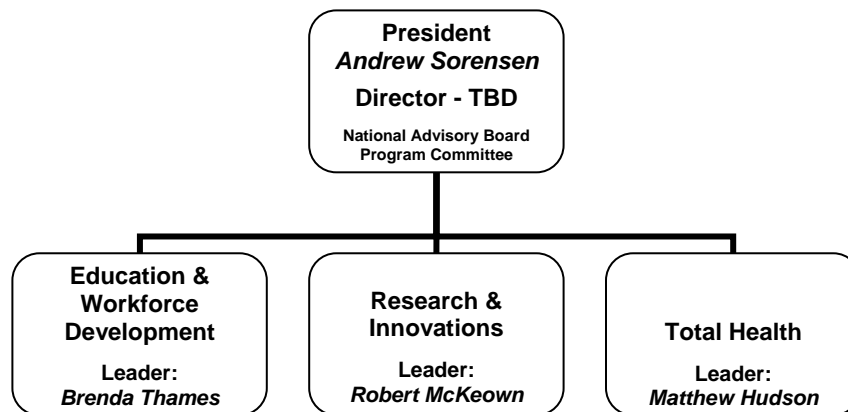
## USC/GHS Specific Initiatives

USC and GHS will develop the Academic Health System by utilizing Specific Initiatives. Specific Initiatives will include the Institute for Advancement of Health Care (IAHC) and will be centered around the inter-disciplinary programs within USC and GHS where collaborative opportunities exist.

### *Institute for Advancement of Health Care (IAHC)*

The IAHC will be the cornerstone of the USC/GHS Academic Health System and will comprise the main office and three integrated programmatic areas. The programmatic framework will facilitate and support innovative clinical/academic models for advancing health and health care delivery.

#### *IAHC Programmatic Framework*



The focus for each programmatic area is as follows:

- **Education & Workforce Development** - facilitate and support cross-disciplinary training programs for multi- and interdisciplinary learning experiences designed to develop the health care workforce of the future.
- **Research & Innovations** - link USC expertise in research and external funding to GHS clinical programs to support “bench to bedside” and “bedside to practice” research
- **Total Health** - facilitate & link GHS Total Health initiatives and USC researchers to foster longitudinal management of individual health status with efforts focused on prevention, wellness, & chronic disease management.

More information about the IAHC will be included in future issues.

For more information, please contact:

**Sarah Livingston**, Administrative Coordinator  
USC Office of the Vice Provost  
for Health Sciences  
[LIVINGS@mailbox.sc.edu](mailto:LIVINGS@mailbox.sc.edu)

**Stacy Whitaker**, Administrative Coordinator  
GHS Office of the Vice President  
for Academic Development  
[swhitaker@ghs.org](mailto:swhitaker@ghs.org)

Refer to the Networking Agreement Executive Summary at the following Web site addresses to learn more about the USC/GHS relationship:

USC: <http://www.sc.edu/research/>

GHS: <http://www.ghs.org/Content.aspx?id=78480>