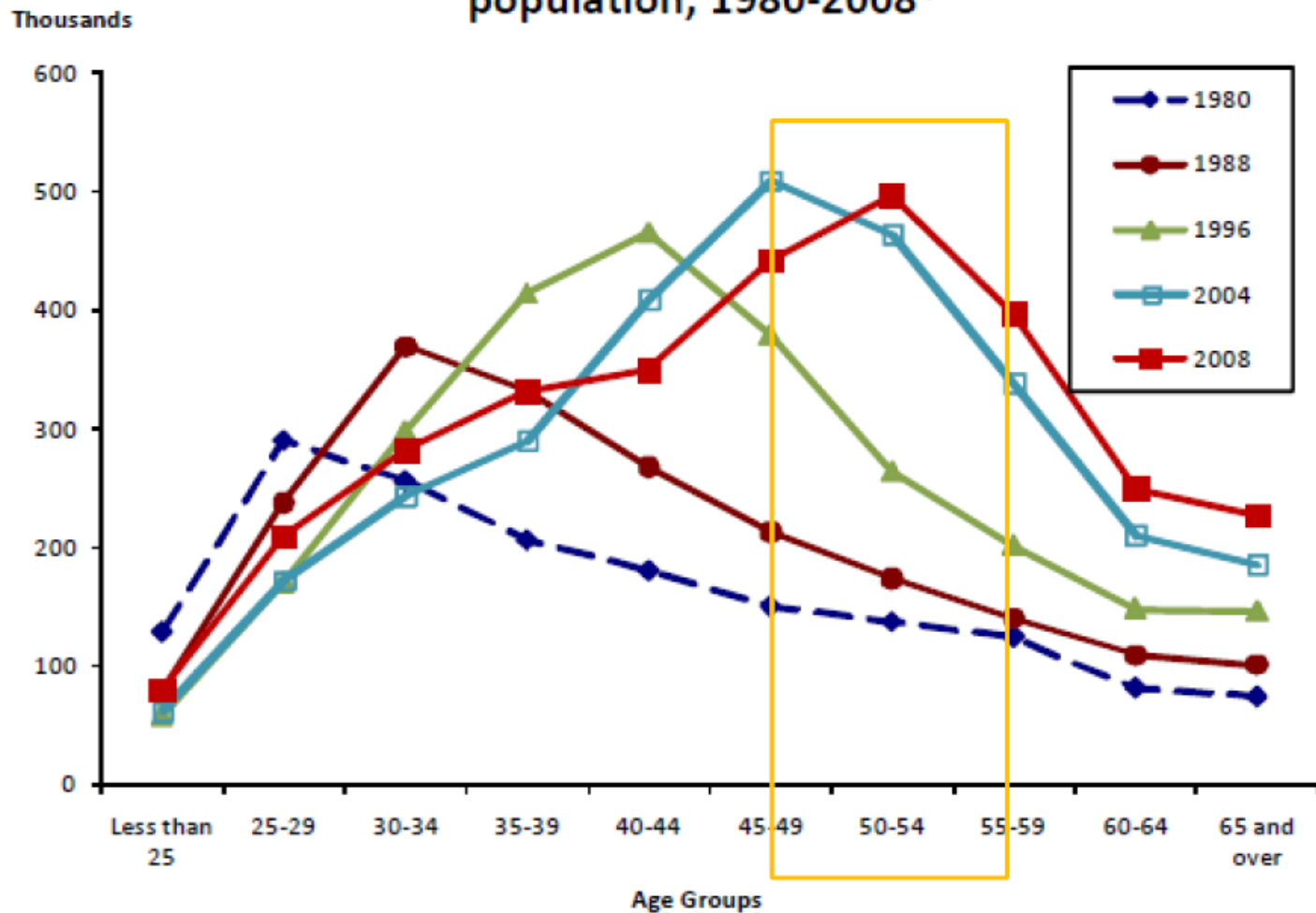
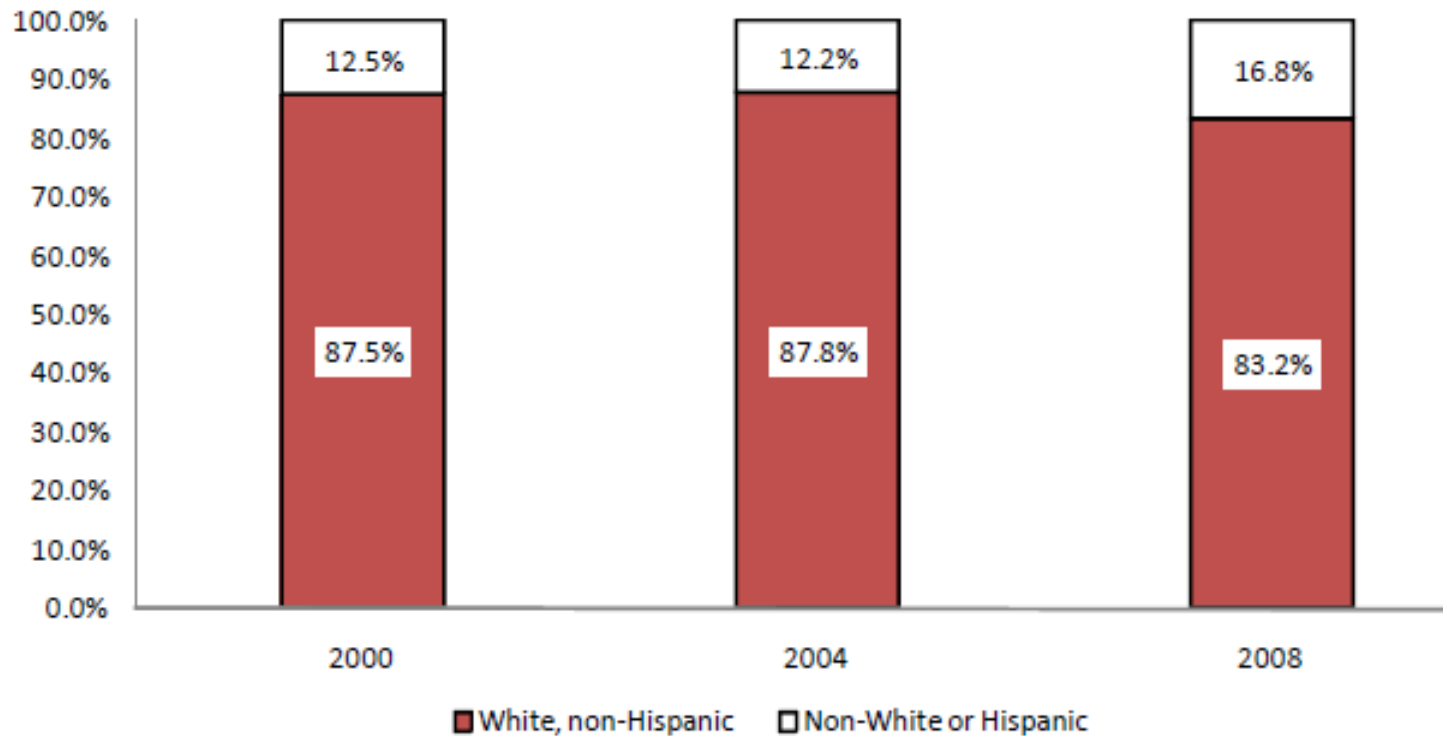


Chart 7. Age distribution of the registered nurse population, 1980-2008*



<http://bhpr.hrsa.gov/healthworkforce/rnsurvey/initialfindings2008pdf>

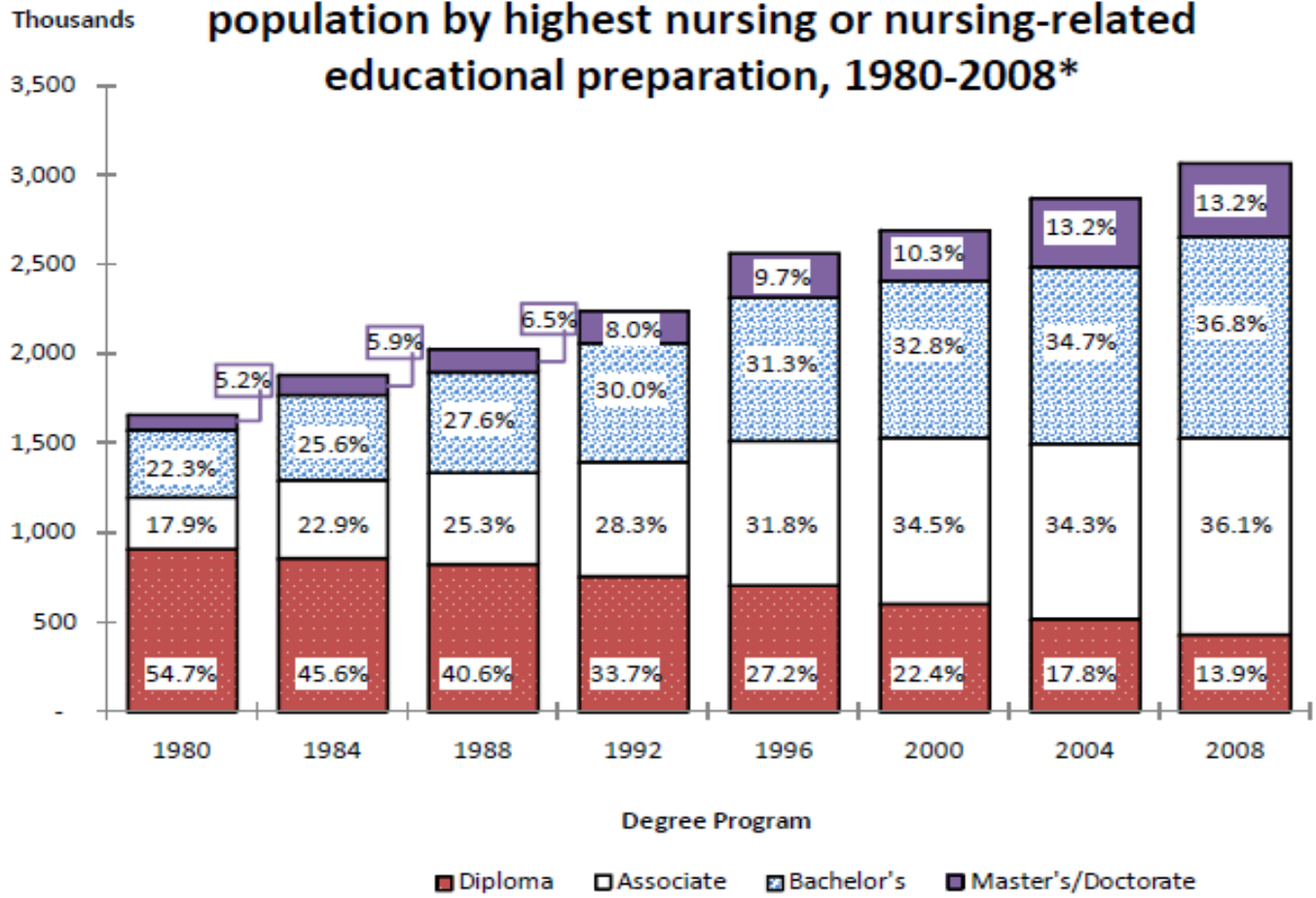
Chart 10. Racial/ethnic distribution of registered nurse population, 2000-2008*



* The total numbers of RNs across all race/ethnicity combinations may not equal 100 percent due to the effect of rounding.

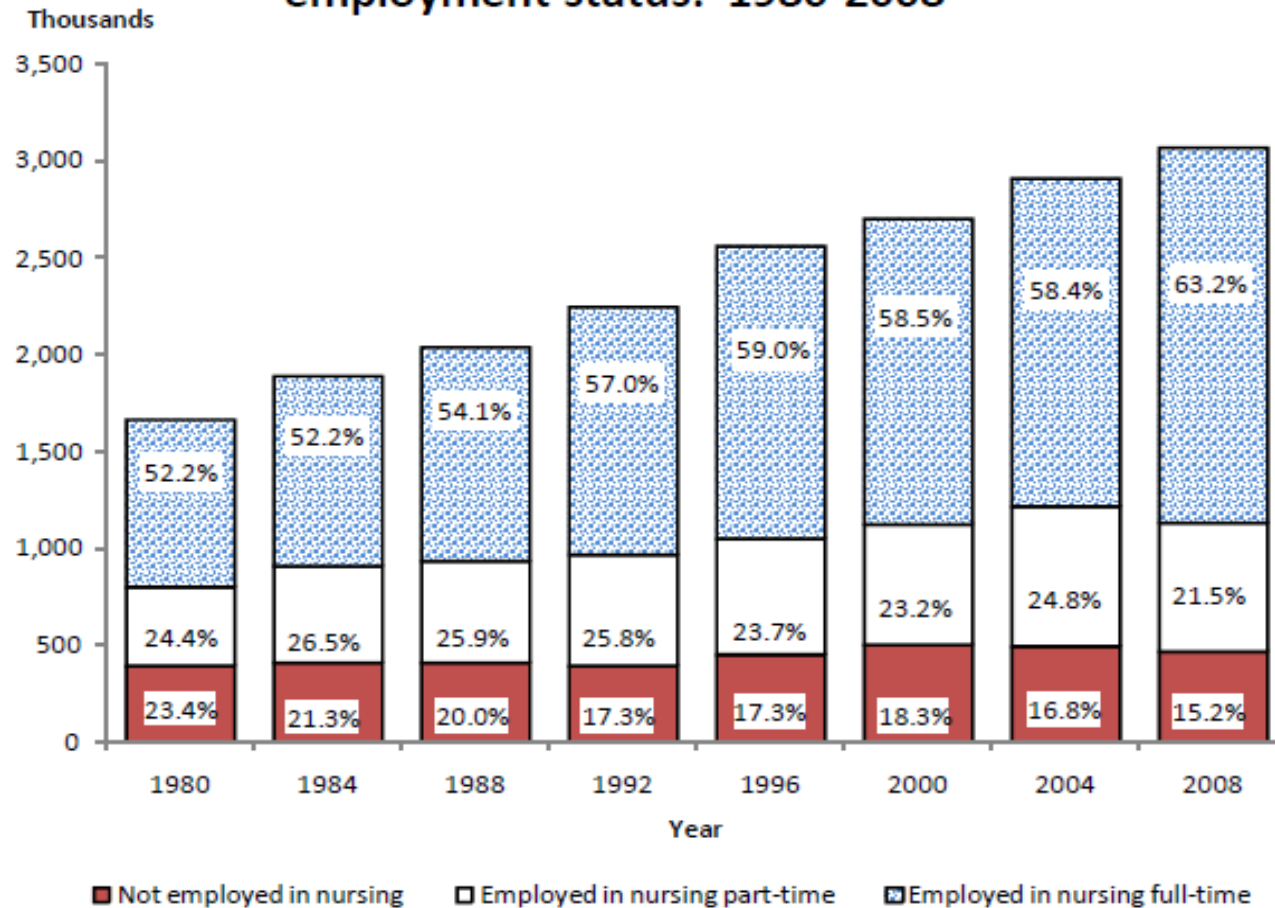
<http://bhpr.hrsa.gov/healthworkforce/rnsurvey/initialfindings2008.pdf>

Chart 4. Distribution of the registered nurse population by highest nursing or nursing-related educational preparation, 1980-2008*



*The totals in each bar may not equal the estimated numbers for RNs in each survey year due to incomplete information provided by respondents and the effect of rounding. Only those who provided initial RN educational preparation information are included in the calculations used for this chart.

Chart 2. Registered nurse population by nurse employment status: 1980-2008*



*The totals of full-time and part-time employment may not add to the estimate of all RNs employed in nursing due to incomplete information provided by respondents on employment status and the effect of rounding.

<http://bhpr.hrsa.gov/healthworkforce/rnsurvey/initialfindings2008.pdf>