

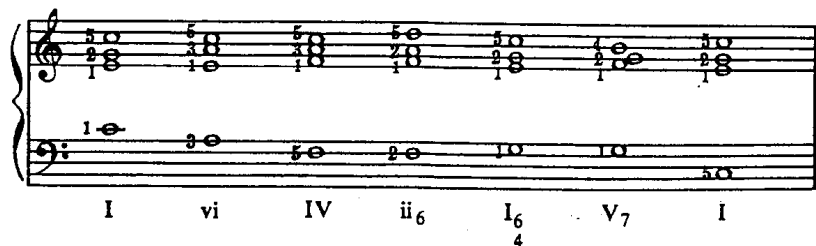
**University of South Carolina  
School of Music  
Group Piano Program  
Advanced Placement Exam  
Placement into MUED 355**

Dr. Omar Roy  
Assistant Professor of Piano and Piano Pedagogy  
Coordinator of Group Piano  
[oroy@sc.edu](mailto:oroy@sc.edu)

**BME Choral students:** If advanced placement is given, the student can enroll in MUED 355 or 156, as determined by Dr. Roy. If advanced placement is not awarded, the student must enroll in MUED 155.

The following skills will need to be demonstrated in an audition with Dr. Roy.

1. Solo Repertoire: performed by memory or with score  
Demonstrate a difficulty level achieved with 5-6 years of keyboard study  
To be eligible for the proficiency exam, at least 10 years of keyboard study is expected.
2. Five Finger Patterns: all major and minor keys, hands together
3. Scales and Arpeggios: all major and harmonic minor scales, 2 octaves, hands separately with standard fingerings  
Scales at minimum of MM=112, eighth note subdivision  
Arpeggios at minimum of MM=63, triplet subdivision
4. Modal Scales: one octave, starting from any pitch  
Lydian, Mixolydian, Aeolian, Phrygian, and Dorian
5. Primary and Secondary Chord Progression: I-vi-IV-ii<sub>6</sub>-I<sub>6/4</sub>-V<sub>7</sub>-I in all major keys



6. Seventh Chords: M7, Mm7, m7, Half-dim 7, Dim 7  
Starting from any pitch, hands together

7. Harmonization: Play a RH melody accompanied by primary and secondary chords in the LH

The image shows two staves of musical notation. The top staff is in treble clef, 2/4 time, with a key signature of one flat (Bb). It contains a single melodic line with eighth and sixteenth notes. The bottom staff is in bass clef, 2/4 time, with the same key signature. It contains a harmonic accompaniment consisting of primary and secondary chords, with some notes beamed together.

8. Two-Hand Accompaniment: Play a two-handed harmonic accompaniment while singing the above melody (No. 7).

9. Improvisation: Improvise a RH melody with the following LH chord pattern.  
3/4 time signature, Key of D major  
Each chord symbol represents one measure (inversions may be used)

I I IV I I IV V7 I

10. Sight Reading: Read an example similar in difficulty

The image shows two staves of musical notation for a piano piece. The key signature is two flats (Bb, Eb) and the time signature is 6/8. The top staff is in treble clef and the bottom staff is in bass clef. The piece starts with a mezzo-piano (*mp*) dynamic and includes a forte (*f*) section. The notation includes various rhythmic patterns, slurs, and fingerings (5, 1, 2) indicated above the notes.