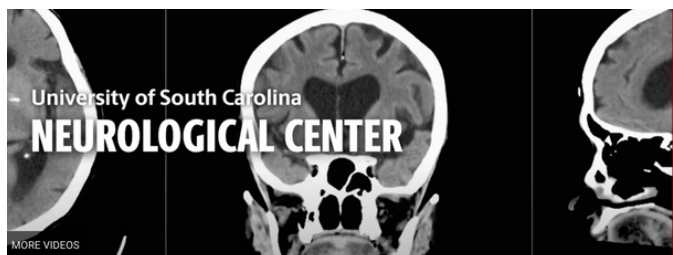


# ADVANCING THE NEUROBIOLOGY OF LANGUAGE AT THE UNIVERSITY OF SOUTH CAROLINA

**We invite you to join a thriving and expanding ecosystem of innovation!**



**USC Brain Health**

**It is a pivotal moment in the study of brain health.** Building on the success of our strategic initiatives, the University has received an extraordinary **\$350 million** in state funding to **construct a new neuroscience hospital** (anticipated opening in 2028).

This investment presents an unprecedented opportunity to **conduct translational research and translate discoveries from the lab directly into patient care.**

Our goal is to expand our collaborative, interdisciplinary community by hiring for seven tenure-track positions to help build the future of the Neurobiology of Language at the University of South Carolina!

## **NEW FACULTY WOULD HAVE ACCESS TO:**

- State-of-the-art **Brain Health Center with SIEMENS 7-Tesla & SIEMENS 3-Tesla MRI scanners & a new Neuroscience hospital**
- **Rural Brain Health Network** offers access to diverse clinical populations and serves as the capstone of a comprehensive institutional commitment to brain health
- **Collaborative opportunities with existing research teams** that have expertise in a wide array of areas, including **aphasia, neurodevelopmental disorders, and basic and applied neurological and neurolinguistic research**



**[For Faculty Openings Info, Please See Back of Flyer](#)**



UNIVERSITY OF  
**South Carolina**

**General Inquiries:**  
Julius Fridriksson  
[FRIDRIKS@mailbox.sc.edu](mailto:FRIDRIKS@mailbox.sc.edu)



# Shape the Future — Join the Faculty at USC!

## 7 tenure-track positions available

### COMMUNICATION SCIENCES AND DISORDERS

- **THREE** faculty positions (open rank, Assistant)
- Focus on **brain imaging, neurobiology of language, cognition, and communication disorders**
- Join our **collaborative faculty** who bring expertise in areas of child language and literacy, dysphagia, aphasia, cochlear implants, etc.

**William Matchin**  
[matchin@mailbox.sc.edu](mailto:matchin@mailbox.sc.edu)

### LINGUISTICS

- **Assistant Professor in Computational Linguistics & Artificial Intelligence** as a part of a university-wide initiative to **support cutting-edge research at the intersection of AI & language science**
- Focus on **computational methods, leveraging Large Language Models (LLMs) and/or natural language processing** to investigate aspects of **AI and language science**

**Stanley Dubinsky**  
[dubinsky@sc.edu](mailto:dubinsky@sc.edu)

**We invite you to join a thriving and expanding ecosystem of innovation!**

### PSYCHOLOGY

- **TWO Assistant Professor positions**
- **Computational Neuro/Psycholinguistics (with Linguistics):** Use modern computational techniques in combination with neuroimaging or behavioral methods to investigate language learning, processing, or representation in the human brain.
- **Neuropsychology:** License-eligible neuropsychologist whose research bridges brain and behavior, including cognitive neuroscience, clinical or developmental neuropsychology, or lifespan neurocognitive functioning.

**Rutvik Desai**  
[rutvik@sc.edu](mailto:rutvik@sc.edu)

### SCHOOL OF MEDICINE

- Are you a clinical scientist with an MD, MD/PhD, or equivalent who is **interested in advancing Brain Health through integrated clinical care and research?**
- Department of Neurology or Psychiatry faculty position will be a part of the **USC Brain Health Network** (<https://tinyurl.com/USC-BHN>).
- Brain Health Network **offers access to a wide range of clinical populations for cognitive and dementia care** and serves as the capstone of a comprehensive institutional commitment to brain health

**Leonardo Bonilha**  
[bonilha@sc.edu](mailto:bonilha@sc.edu)

**Apply Now**

For more information on open positions, scan the QR code  
OR visit

<https://tinyurl.com/USC-Faculty-Positions>

