

May 31, 2018

Garvin Design Group  
1209 Lincoln St.  
Columbia, SC 29201

**ADDENDUM NO. 2**

The following items shall take precedence over the drawings and specifications for the above named project and shall become a part of the contract documents. Where any item called for in the specifications, or indicated on the drawings, is not supplemented hereby, the original requirements shall remain in effect. Where any original item is amended, voided, or superseded hereby, the provisions of such item not specifically amended, voided or superseded shall remain in effect.

**Specifications**

1. Reference Section 093000 Tiling. Revise/add the following sections:

- 2.8 TILE BACKING PANELS

- A. Cementitious Backer Units: ANSI A118.9 or ASTM C 1325, Type A, in maximum lengths available to minimize end-to-end butt joints. Thickness: 1/4 inch (6.4 mm). See Sketch SK-2, attached.

- 3.2 PREPARATION

- E. At painted, glazed block walls, provide Cementitious Backer Board over existing painted block surface as substrate for Porcelain Wall Panels (PWP).

- 3.4 TILE BACKING PANEL INSTALLATION FOR PORCELAIN WALL PANELS (PWP)

- C. Install panels and treat joints according to ANSI A108.11 and manufacturer's written instructions for type of application indicated. Use Laticrete 254 "Titatium" or equivalent thinset for bonding material, unless otherwise directed in manufacturer's instructions. TCNA method, F144. Install waterproofing/crack-suppression membrane over cementitious backer board at walls, and tie into membrane at floor per manufacturer's recommendations.

2. Reference Section 093000 Tiling, Section 2.3, B. Add the following: "2. Available product: Protecto Wrap, AFM-WM Anti Fracture Waterproof Membrane.

END OF ADDENDUM NO. 2

Attachments:

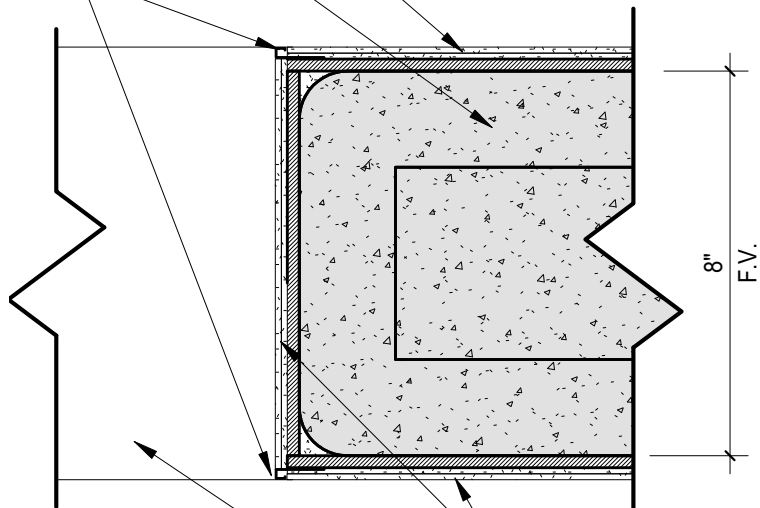
1. Sketch SK-2 Plan Detail at Round Glazed Block Corner

PORCELAIN WALL PANEL INSTALLED  
OVER CEMENTITIOUS BACKER BOARD  
OVER EXISTING GLAZED BLOCK

EXISTING GLAZED BLOCK WALL TO  
REMAIN

SCHLUTER CORNER TRIM -  
ANODIZED ALUM. FINISH, SEE  
SPECS.

2



PORCELAIN WALL PANEL INSTALLED  
OVER CEMENTITIOUS BACKER BOARD  
OVER EXISTING GLAZED BLOCK

CURB BELOW - ONLY WHERE  
OCCURRING IN PLANS

**1** PLAN DETAIL @ ROUND GLAZED BLOCK CORNER

SK-2

3" = 1'-0"

REFERENCED ON: A3.1



803.212.1032 p / 803.212.1074 f  
1209 Lincoln Street P.O. Box 18 Columbia, SC 29202  
THIS DRAWING AND THE DESIGN THEREON ARE THE PROPERTY OF THE  
GARVIN DESIGN GROUP, INC. THE REPRODUCTION, COPYING, OR USE  
OF THIS DRAWING WITHOUT THE WRITTEN CONSENT OF THE GARVIN  
DESIGN GROUP IS PROHIBITED AND ANY INFRINGEMENT WILL BE  
SUBJECT TO LEGAL ACTION.

PROJECT TITLE  
**MEN'S BASKETBALL  
PRACTICE FACILITY LOCKER  
ROOM**

Carolina Coliseum  
650 Park Street  
Columbia, SC 29201  
@ 2003 GARVIN DESIGN GROUP, INC.

REVISION:  
**2**

ARCH PROJECT NO:  
**U470.17**

DATE:  
**5.31.18**

ISSUED VIA:  
**TILE PLAN DETAIL**

REFERENCE:  
**6/A3.1**

SKETCH NO:  
**SK-2**