

LEGEND			
COMMON NAME	QTY	SIZE	
FLOWER, GRASS			
GRASS, CORD	6	EACH	
GRASS, MULHY PINK	24	EACH	
MILKWEED, RUSH	11	EACH	
OATS, SEA	28	EACH	
FLOWER, PERENNIAL			
JUNIPER, BLUE RUG	23	EACH	
BLACK EYED SUSAN	7	EACH	
BLEEDING HEART	8	EACH	
BLUE STAR, NARROW LEAF	3	EACH	
BLUEBELLS, VIRGINIA	13	EACH	
CANNA LILY	3	EACH	
COLUMBINE, WHITE	8	EACH	
CONEFLOWER, PURPLE	8	EACH	
COREOPSIS, YELLOW RISING SUN	6	EACH	
COTTON LAVENDER	16	EACH	
GRASS, SWEET	9	EACH	
ICE PLANT	13	EACH	
INDIGO, BLUE FALSE	12	EACH	
IRIS, PURPLE	9	EACH	
LIATRIS	11	EACH	
LILY, ROCKY SHOALS SPIDER	20	EACH	
LUPINE, RUSSELL HYBRID	1	EACH	
PHLOX, CREEPING	32	EACH	
PINK, CHEDDAR PINK	11	EACH	
ST. JOHNSWORT	15	EACH	
FLOWER, VINE			
CLEMATIS	1	EACH	
HYDRANGEA, CLIMBING	2	EACH	
JASMINE, YELLOW	4	EACH	
VINE, CORAL	6	EACH	
VINE, TRUMPET	1	EACH	
SHRUB, CACTI			
PRICKLY PEAR	1	5 GAL.	
YUCCA, SPANISH BAYONET	3	5 GAL.	
SHRUB, DECIDUOUS			
BEAUTYBERRY	4	5 GAL.	
BLUEBERRY	4	5 GAL.	
CHOKEBERRY	3	5 GAL.	
LANTANA, MIXED 2	7	5 GAL.	
LEUCOTHOE, DROOPING	5	5 GAL.	
SWEETSPIRE, VIRGINIA	5	5 GAL.	
SHRUB, EVERGREEN BROADLEAF			
PLUMBAGO, BLUE	6	5 GAL.	
RHODODENDREN, AMERICA	1	5 GAL.	
WILLOWLEAF COTONEASTER, WEEPING	8	5 GAL.	
YUCCA, SPANISH BAYONET	3	5 GAL.	
TREE, DECIDUOUS			
APPLE SERVICEBERRY	1	2"	
TREE, EVERGREEN			
CYPRESS, ARIZONA, 'BLUE PYRAMID'	2	10 GAL.	
CYPRESS, ARIZONA	1	10 GAL.	
PALM, CABBAGE	2	10 GAL.	
DWARF PALMETTO	3	2"	

Revision #: 7

Scale:

Landscape Plan:

Landscape Design by: Jeffrey Gattis

Date: 3/14/2017

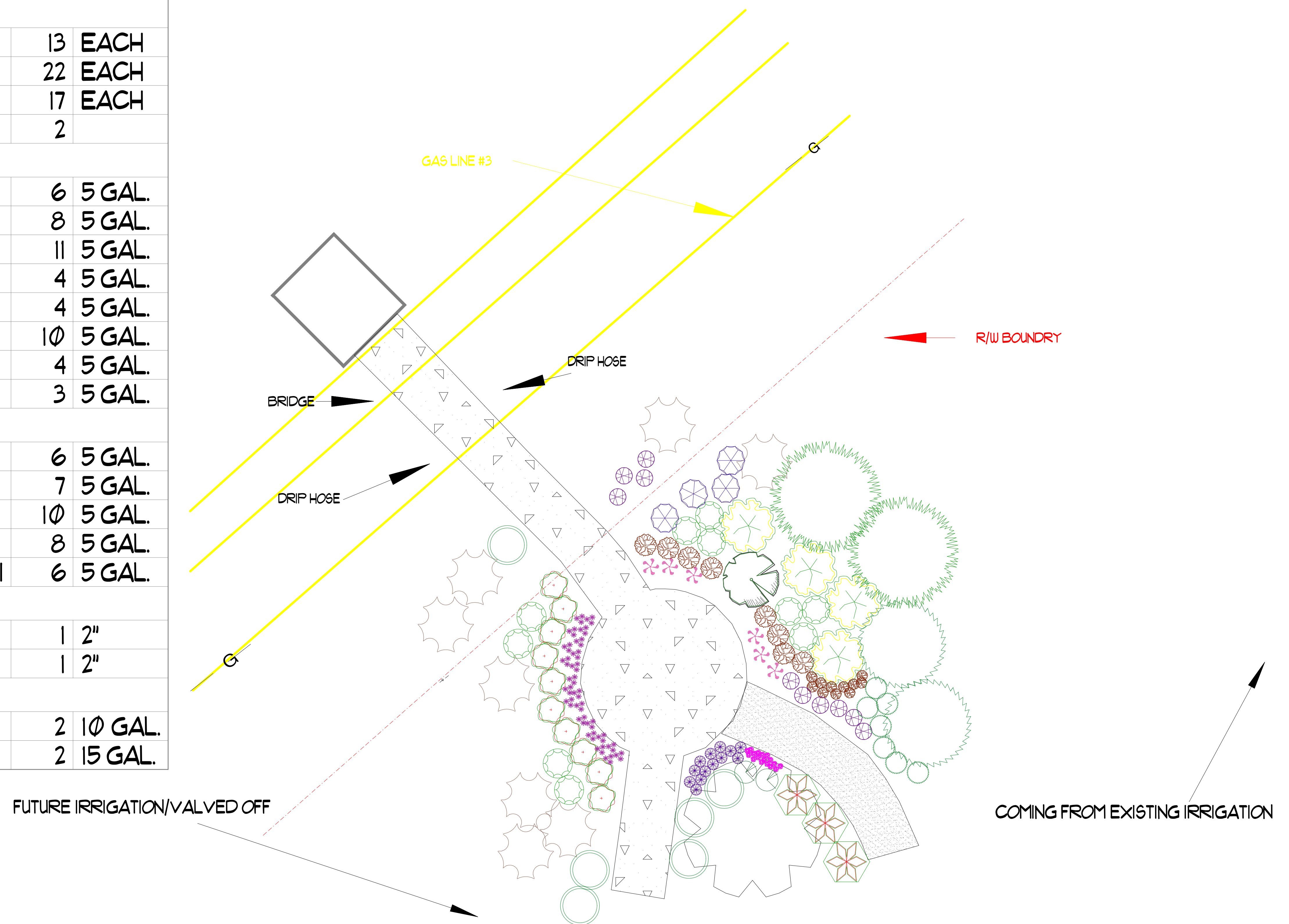
1" = 50'

USCA BRIDGE PHASE 1

Atomic Turf, LLC

LEGEND

COMMON NAME	QTY	SIZE
FLOWER, PERENNIAL		
 CONEFLOWER, PURPLE	13	EACH
 DAYLILY, 'HAPPY RETURNS'	22	EACH
 FALL PHLOX	17	EACH
 HIBISCUS, BIG RED	2	
SHRUB, DECIDUOUS		
 ABELIA, GLOSSY	6	5 GAL.
 AZALEA, BLOOM-A-THON	8	5 GAL.
 BARBERRY, CONCORD RED	11	5 GAL.
 BORDER FORSYTHIA	4	5 GAL.
 BUTTERFLY BUSH, MISS MOLLY	4	5 GAL.
 LANTANA, MIXED 2	10	5 GAL.
 SUMMERSWEET, SWEET PEPPERBUSH	4	5 GAL.
 SWEETSPIRE, VIRGINIA	3	5 GAL.
SHRUB, EVERGREEN BROADLEAF		
 DAPHNE, FRAGRANT OR WINTER	6	5 GAL.
 HOLLY, YAUPON, DWARF	7	5 GAL.
 LOREPETALUM, PURPLE PIXIE DWARF	10	5 GAL.
 OLEANDER, PINK	8	5 GAL.
 OSMANTHUS HETEROPHYLLUS GOSHIKI	6	5 GAL.
TREE, DECIDUOUS		
 APPLE SERVICEBERRY	1	2"
 JAPANESE MAPLE BLOODGOOD	1	2"
TREE, EVERGREEN		
 HOLLY, AMERICAN	2	10 GAL.
 WAXED MYRTLE	2	15 GAL.



Revision #: 7

Date: 3/14/2017

Scale:

1" = 10'

Landscape Plan:

USCA Bridge Phase 2

Landscape Design by: Jeffrey Gattis

Atomic Turf, LLC