

## OUTSIDE AIR / EXHAUST AIR HANDLING UNIT SCHEDULE

MARK	DAIKIN MODEL	ENTHALPY WHEEL, SUMMER												TOTAL EFFICIENCY	TOTAL MBH	DEHUMIDIFICATION COIL (3)													
		SUPPLY FAN (2)				EXHAUST FAN (2)				SUPPLY						EXHAUST				ENT. AIR		LVG. AIR		EWT F		LWT F		GPM	WATER P.D.
		CFM	E.S.P.	HP	FAN #	CFM	E.S.P.	HP	FAN #	ENT. AIR	FUB	LVG. AIR	FUB			ENT. AIR	FUB	LVG. AIR	FUB	ENT. AIR	FUB	LVG. AIR	FUB	EWT F	LWT F				
		1000	10"	15	750	120"	10	950	700	816	691	720	600			901	145	70.93%	48.15	816	691	540	530	48	57.3	103	3.0 FT.		
04H-1	CAH003GDAC	1000	10"	15	750	120"	10	950	700	816	691	720	600	901	145	70.93%	48.15	816	691	540	530	48	57.3	103	3.0 FT.				

ENTHALPY WHEEL, WINTER												HOT WATER HEAT COIL (3)										UNIT SOUND POWER (DB)																		
SUPPLY				EXHAUST				TOTAL EFFICIENCY	MBH		ENT. AIR		LVG. AIR		EWT F		LWT F		GPM		WATER P.D.		TYPE		63 Hz		125 Hz		250 Hz		500 Hz		1000 Hz		2000 Hz		4000 Hz		8000 Hz	
ENT. AIR	LVG. AIR	FDB	FDB	ENT. AIR	LVG. AIR	FDB	FDB		ENT. AIR	FUB	LVG. AIR	FUB	ENT. AIR	FUB	LVG. AIR	FUB	ENT. AIR	FUB	LVG. AIR	FUB	ENT. AIR	FUB	LVG. AIR	FUB	ENT. AIR	FUB	LVG. AIR	FUB	ENT. AIR	FUB	LVG. AIR	FUB	ENT. AIR	FUB	LVG. AIR	FUB	ENT. AIR	FUB		
200	50.9	720	30.4	81.9%	20.8	50.9	700	100	180	150	14	10 FT.	EXH. INTAKE	68	68	64	63	65	62	61	58																			

- ① OR EQUAL, BY VENTILAR SERVO OR APPROVED EQUAL. HORIZONTAL UNIT WITH VERTICAL DISCHARGE, FLAT FILTER SECTION W/ 2" MERV 8 PLEATED MEDIA FILTERS, ENTHALPY WHEEL, CHILLED WATER DEHUMIDIFICATION COIL, AND HOT WATER HEAT COIL AND ACCESS SECTIONS. EXHAUST AIR SECTION SHALL BE HORIZONTAL (ON TOP OF O.A. SECTION) WITH HORIZONTAL DISCHARGE. PROVIDE FAN MOUNTS WITH INTERNAL SPRING VIBRATION ISOLATORS.
- ② UNITS TO MATCH AVAILABLE ELECTRICAL SERVICE (208v/3ph). PROVIDE SUPPLY AIR AND EXHAUST AIR FANS WITH VFD/DISCONNECT
- ③ MAX. FACE VELOCITY FOR ALL COILS SHALL BE 500 FPM MAX. ALL COILS SHALL HAVE EQUAL FACE AREAS. SERVICE SPACE BETWEEN LEAVING FINIS OF UPSTREAM COIL TO THE ENTERING FINIS OF THE NEXT DOWNSTREAM COIL SHALL NOT EXCEED 18". ALL COIL SECTIONS SHALL HAVE REMOVABLE ACCESS PANELS.
- ④ ALL SECTIONS OF THE OUTSIDE AIR HANDLING UNIT (04H-1) SHALL BE SHIPPED SEPARATELY SO THEY CAN BE BROUGHT TO THE 4th FLOOR USING THE SINGLE FRONT DOOR TO LIEBER COLLEGE AND THE ELEVATOR OR SINGLE BACK DOOR TO LIBER COLLEGE AND THE STAIRWELL. EACH SECTION SHALL HAVE A CONTINUOUS 6" BASE RAIL ALL AROUND.

\* MAXIMUM BRAKE HP. SHALL NOT EXCEED 90% OF FAN HP. LISTED

## FOUR PIPE FAN COIL UNIT SCHEDULE

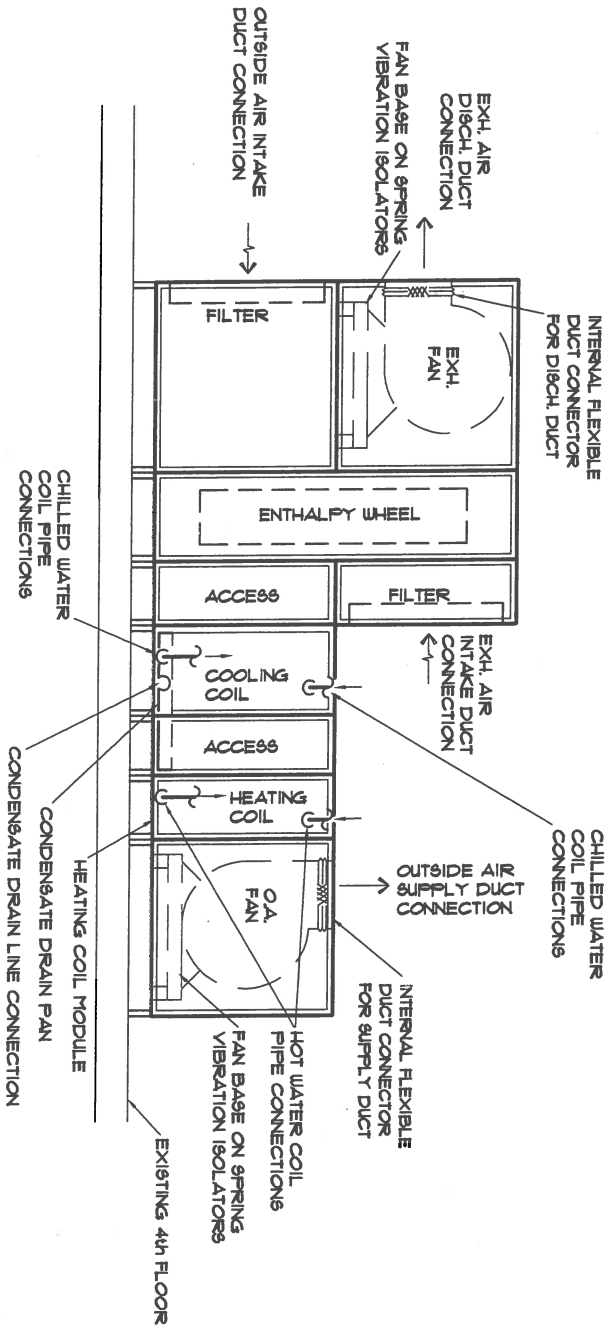
MARK	ENVIRO-TEC MODEL ②	FAN										COOLING COIL						HEATING COIL					
		CR1	E9.P.	WATTS ①	TOTAL MBH	SENS. MBH	ENT. AIR ° DB	AIR ° WB	EWT ° F	LWT ° F	GPM	WATER P.D.	PIPE RINOUT SIZE	TOTAL MBH	ENT. AIR ° DB	LVG. AIR ° DB	EWT ° F	LWT ° F	GPM	WATER P.D.	PIPE RINOUT SIZE		
1st FLOOR																							
FCU-11-04	YFE-C04	400	N/A	10	12	6.5	6.5	75	63	48	60	12	60	3/4"	16.5	60	98	180	150	11	60	1/2"	
FCU-12-03	YFE-C03	300	N/A	60	4.6	4.4	6.5	75	63	48	60	0.8	60	3/4"	11.1	60	91	180	150	0.8	60	1/2"	
FCU-13-04	YFE-C04	400	N/A	10	12	6.5	6.5	75	63	48	60	12	60	3/4"	16.5	60	98	180	150	11	60	1/2"	
FCU-14-08	YFE-C08	560	N/A	115	8.8	8.4	6.5	75	63	48	60	15	60	3/4"	23.9	60	99	180	150	16.0	60	3/4"	
FCU-15-04	YFE-C04	400	N/A	10	12	6.5	6.5	75	63	48	60	12	60	3/4"	16.5	60	98	180	150	11	60	1/2"	
FCU-16-03	YFE-C03	300	N/A	60	4.6	4.4	6.5	75	63	48	60	0.8	60	3/4"	11.1	60	91	180	150	0.8	60	1/2"	
FCU-17-04	YFE-C04	400	N/A	10	12	6.5	6.5	75	63	48	60	12	60	3/4"	16.5	60	98	180	150	11	60	1/2"	
FCU-18-04	YFE-C04	400	N/A	10	12	6.5	6.5	75	63	48	60	12	60	3/4"	16.5	60	98	180	150	11	60	1/2"	
FCU-19--03	YFE-C03	300	N/A	60	4.6	4.4	6.5	75	63	48	60	0.8	60	3/4"	11.1	60	91	180	150	0.8	60	1/2"	
FCU-110-02	YFE-C02	220	N/A	45	2.9	2.8	6.5	75	63	48	60	0.5	60	3/4"	8.1	60	91	180	150	0.6	60	1/2"	
2nd FLOOR																							
FCU-21-10	YFE-C010	145	N/A	135	13.1	11.9	6.5	75	63	48	60	2.2	60	3/4"	31.9	60	99	180	150	2.20	60	3/4"	
FCU-22-04	YFE-C04	400	N/A	10	12	6.5	6.5	75	63	48	60	12	60	3/4"	16.5	60	98	180	150	11	60	1/2"	
FCU-23-40	HLP-40	510	0.25"	125	12.6	10.1	6.5	75	63	48	60	2.2	60	3/4"	25.5	60	106	180	150	1.7	60	3/4"	
FCU-24-03	YFE-C03	300	N/A	60	4.6	4.4	6.5	75	63	48	60	0.8	60	3/4"	11.1	60	91	180	150	0.8	60	1/2"	
FCU-25-03	YFE-C03	300	N/A	60	4.6	4.4	6.5	75	63	48	60	0.8	60	3/4"	11.1	60	91	180	150	0.8	60	1/2"	
FCU-26-04	YFE-C04	400	N/A	10	12	6.5	6.5	75	63	48	60	12	60	3/4"	16.5	60	98	180	150	11	60	1/2"	
FCU-27-50	HLP-50	640	0.25"	185	14.4	12.1	6.5	75	63	48	60	2.5	60	3/4"	32.1	60	105	180	150	2.2	60	3/4"	
FCU-28-50	HLP-50	640	0.25"	185	14.4	12.1	6.5	75	63	48	60	2.5	60	3/4"	32.1	60	105	180	150	2.2	60	3/4"	
FCU-29-04	YFE-C04	400	N/A	10	12	6.5	6.5	75	63	48	60	12	60	3/4"	16.5	60	98	180	150	11	60	1/2"	

3rd FLOOR																					
FCU-31-04	VFE-C04	400	N/A	10	12	6.5	15	63	48	60	12	60	3/4"	16.5	60	98	180	150	11	60	1/2"
FCU-32-03	VFE-C03	300	N/A	60	46	4.4	15	63	48	60	0.8	60	3/4"	11.1	60	91	180	150	0.8	60	1/2"
FCU-33-03	VFE-C03	300	N/A	60	46	4.4	15	63	48	60	0.8	60	3/4"	11.1	60	91	180	150	0.8	60	1/2"
FCU-34-03	VFE-C03	300	N/A	60	46	4.4	15	63	48	60	0.8	60	3/4"	11.1	60	91	180	150	0.8	60	1/2"
FCU-35-03	VFE-C03	300	N/A	60	46	4.4	15	63	48	60	0.8	60	3/4"	11.1	60	91	180	150	0.8	60	1/2"
FCU-36-06	VFE-C06	515	N/A	80	80	1.1	15	63	48	60	1.4	60	3/4"	22.1	60	99	180	150	0.8	60	1/2"
FCU-37-04	VFE-C04	400	N/A	10	12	6.5	15	63	48	60	1.2	60	3/4"	16.5	60	98	180	150	11	60	1/2"
FCU-38-04	VFE-C04	400	N/A	10	12	6.5	15	63	48	60	1.2	60	3/4"	16.5	60	98	180	150	11	60	1/2"
FCU-39-04	VFE-C04	400	N/A	10	12	6.5	15	63	48	60	1.2	60	3/4"	16.5	60	98	180	150	11	60	1/2"
FCU-310-50	HLP-50	640	Ø25"	105	144	12.1	15	63	48	60	2.5	60	3/4"	32.1	60	105	180	150	2.2	60	3/4"
FCU-311-40	HLP-40	510	Ø25"	125	126	10.1	15	63	48	60	2.2	60	3/4"	25.5	60	106	180	150	1.7	60	3/4"
4th FLOOR																					
FCU-41-04	VFE-C04	400	N/A	10	12	6.5	15	63	48	60	1.2	60	3/4"	16.5	60	98	180	150	11	60	1/2"
FCU-42-10	VFE-C010	145	N/A	135	131	11.9	15	63	48	60	2.2	60	3/4"	31.9	60	99	180	150	2.20	60	3/4"
FCU-43-04	VFE-C04	400	N/A	10	12	6.5	15	63	48	60	1.2	60	3/4"	16.5	60	98	180	150	11	60	1/2"
FCU-44-06	VFE-C06	515	N/A	80	80	1.1	15	63	48	60	1.4	60	3/4"	22.1	60	99	180	150	0.8	60	1/2"
FCU-45-06	VFE-C06	515	N/A	80	80	1.1	15	63	48	60	1.4	60	3/4"	22.1	60	99	180	150	0.8	60	1/2"

- ① FAN COIL UNIT TO MATCH AVAILABLE ELECTRICAL SERVICE (120V/PH). PROVIDE WITH ETI BC-06 CONTROL BOARD WITH TRANSFORMER AND 3-SPEED SOLID STATE RELAYS. PROVIDE JOHNSON CONTROLS INC. DIGITAL FIELD EQUIPMENT CONTROLLER (FEC) FACTORY INSTALLED AND WIRED. PROVIDE WITH DISCONNECT SWITCH.
- ② OR EQUAL BY TRANE, RITTLING, OR APPROVED EQUAL.
- ③ CONTRACTOR SHALL ENSURE ANY FAN COIL UNIT SUBSTITUTED FOR THOSE SPECIFIED SHALL BE COORDINATED WITH ELECTRICAL AND PHYSICAL DIFFERENCES.
- ④ FLOOR MOUNTED EXPOSED UNITS SHALL INCLUDE 18 GA. REMOVABLE FRONT PANELS, EXTENDED POCKETS, SUB-BASE, FALSE BACK FOR ELECTRICAL, 304 STAINLESS STEEL DRAIN PANS, 3-ROW CHILLED WATER COOLING COIL, 1-ROW HOT WATER HEATING COIL (RE-HEAT), REMOVABLE RETURN GRILLE, LINEAR BAR SUPPLY GRILLE, COILS SHALL HAVE 1/2" COPPER TUBES WITH 0.025" WALL THICKNESS. COILS SHALL HAVE AIR VENT AND DRAIN CONNECTION, OVERSIZED AUXILIARY DRIP TRAY UNDER CHILLED WATER CONTROL VALVES, MERV 8 FLEATED MEDIA FILTERS, AND FACTORY MOUNTED FLOAT SWITCHES IN THE DRAIN PANS. ALL COILS SHALL HAVE THREADED CONNECTIONS, CHILLED WATER CONTROL VALVES SHALL BE 2-WAY, PRESSURE INDEPENDENT CONTROL VALVES. ALL CONTRACTORS (SWITCHES) SHALL BE TOTALLY SILENT.

# OUTSIDE AIR HANDLING UNIT DETAIL

NOT TO SCALE



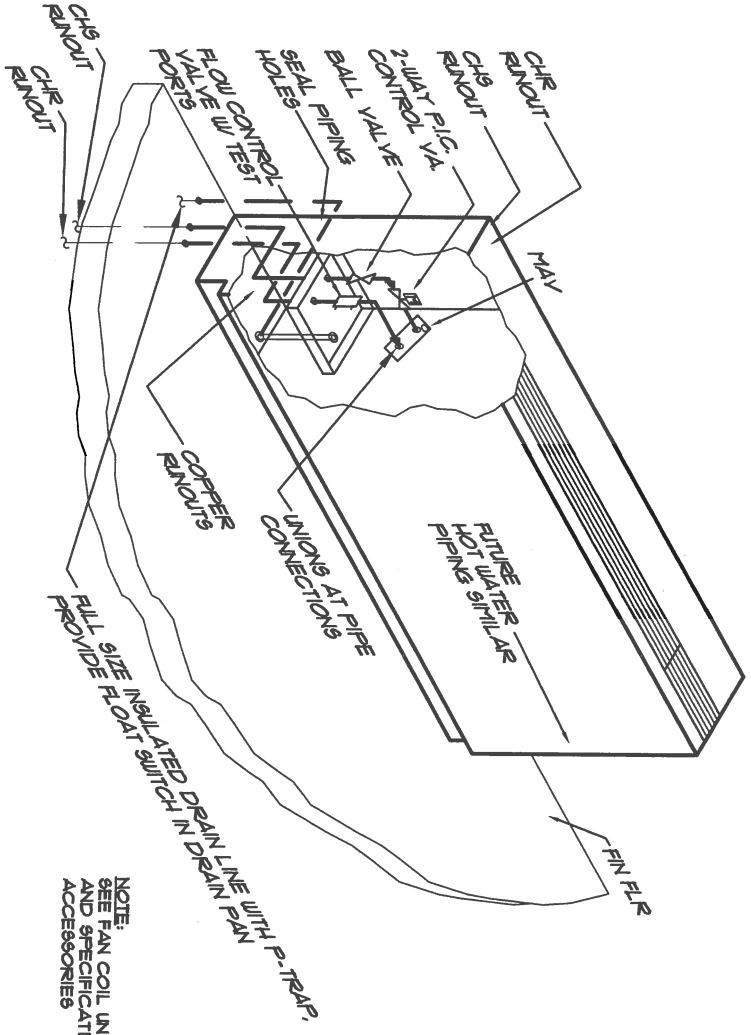
NOTE:  
HOT WATER COIL AND CHILLED WATER COIL SHALL INCLUDE VENT AND DRAIN CONNECTIONS  
FAN SHALL HAVE EXTENDED LUBE LINES TO A BRACKET JUST INSIDE FAN MODULE DOORS

## ACCESS DOORS:

- BOTTOM DECK:
- FAN SECTION - 16"x22"
- ACCESS SECTIONS - 12"x22"
- ENTHALPY WHEEL - 12"x48"
- FILTER SECTION - 10"x22"

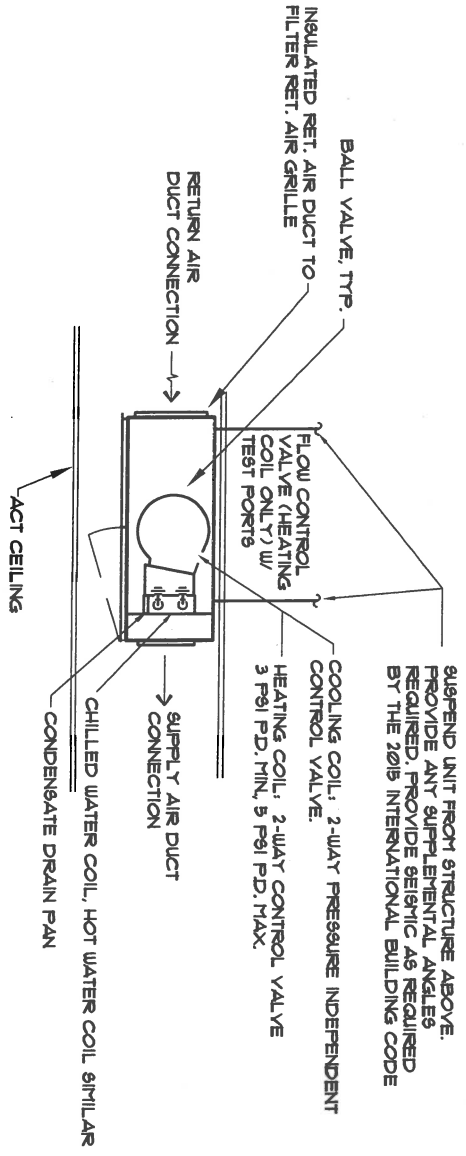
## TOP DECK:

- FAN SECTION - 16"x22"
- FILTER SECTION - 10"x22"



NOTE:  
SEE FAN COIL UNIT SCHEDULE  
AND SPECIFICATIONS FOR UNIT  
ACCESSORIES

**ROOM FAN COIL UNIT (VERTICAL) DETAIL**  
NO SCALE



**FAN COIL UNIT (HORIZONTAL) DETAIL**  
 NOT TO SCALE

NOTE:  
 SEE FAN COIL UNIT SCHEDULE  
 AND SPECIFICATIONS FOR UNIT  
 ACCESSORIES