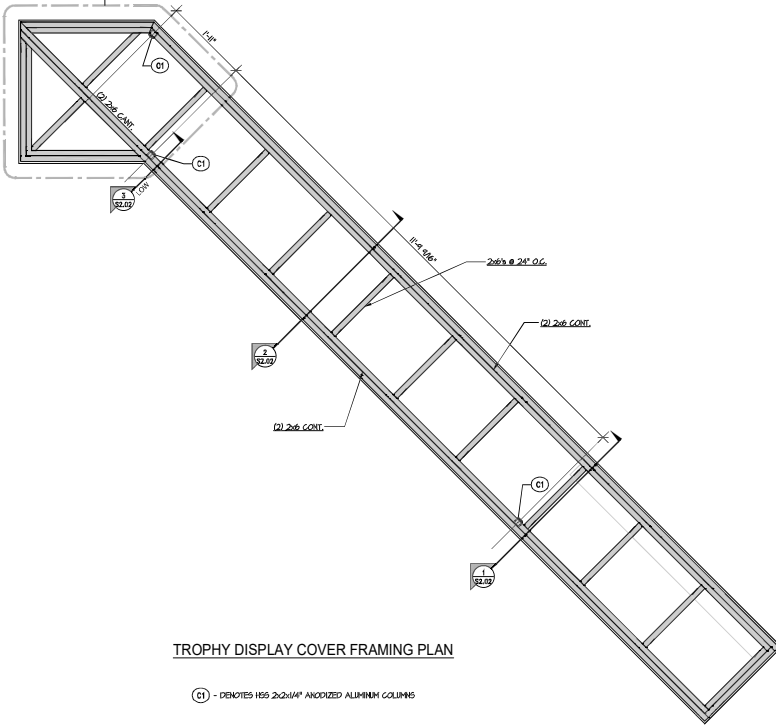
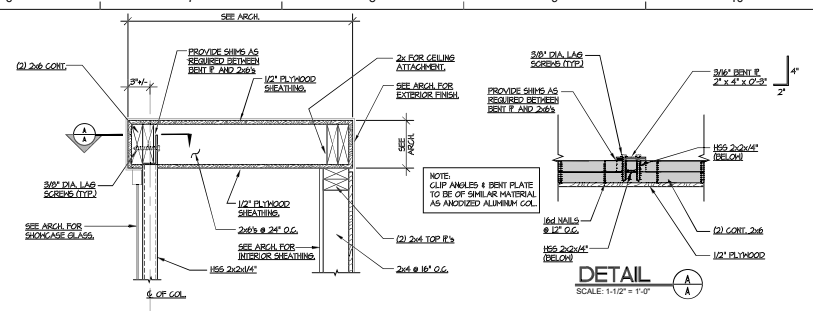


NOTE:  
GLUE AND SCREEN TOP  
LAYER OF FLYWOOD  
SHEATHING OVER DISPLAY  
CASE IN THIS AREA.

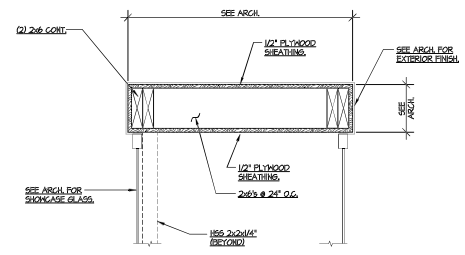


TROPHY DISPLAY COVER FRAMING PLAN

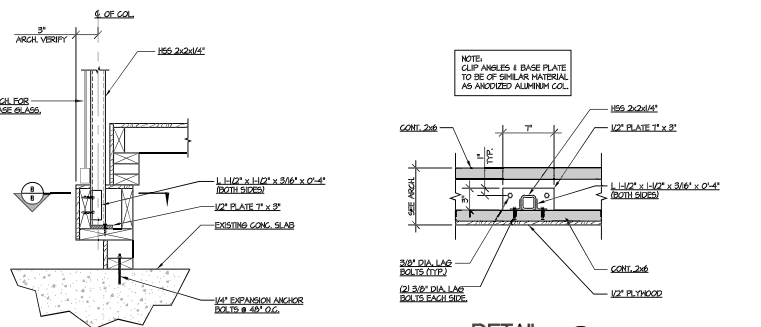
Ⓛ1 - DENOTES 1/2" x 2 1/4" ANKORIZED ALUMINUM COLUMNS



SECTION 1  
SCALE: 1-1/2" = 1'-0"



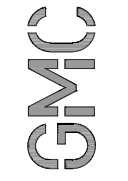
SECTION 2  
SCALE: 1-1/2" = 1'-0"



DETAIL 3  
SCALE: 1-1/2" = 1'-0"

NOTE:  
CLIP ANGLES & BASE PLATE  
TO BE OF SIMILAR MATERIAL  
AS ANKORIZED ALUMINUM COL.

CARE SHOULD BE TAKEN TO  
AVOID ANY REINFORCEMENT  
IN EXISTING POST-TENSION  
SLABS BY EXPANSION BOLTS.



101 East Washington Street, Suite 200  
Greenville, SC 29601  
T 864.527.0460  
GMCNETWORK.COM

|                    |          |
|--------------------|----------|
| ISSUE / DATE       | 07/18/17 |
| CONTRACT DOCUMENTS |          |
|                    |          |
|                    |          |
|                    |          |
| DRAWN BY           | JCB/MWV  |
| CHECKED BY         | MWV      |

UNIVERSITY OF SOUTH CAROLINA  
CLA TROPHY DISPLAY  
801 Lincoln St  
Columbia, SC  
GMC # ACOL170003

TROPHY DISPLAY  
COVER DETAILS

S2.02



IMMERMAN  
Structural Engineering Group  
518 Drive D, West Columbia, SC, 29169  
P: 803.744.4514 F: 803.744.4512