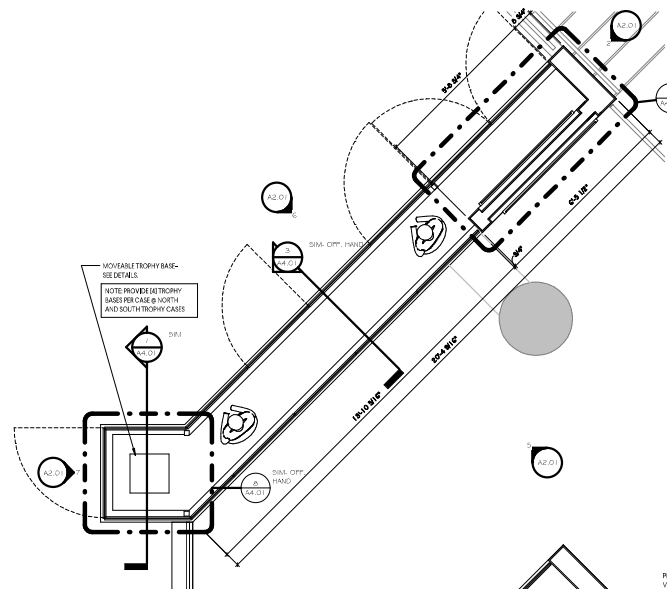


11/27/2017 9:28:21 AM



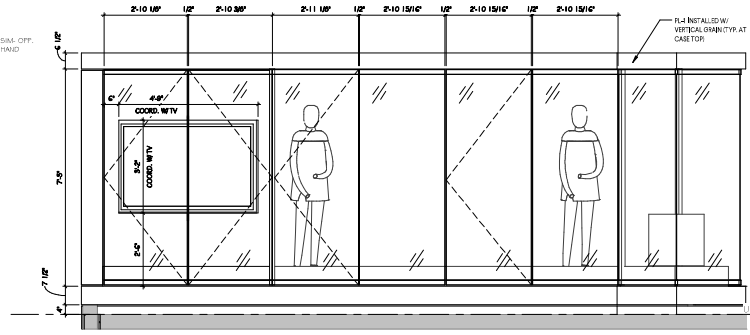
1 TROPHY CASE 1
12'-0"

PROMOTE TO BRUSH LOW VOLTAGE LED HEADS TO 2000K/3000K/5000K/6000K NICKEL

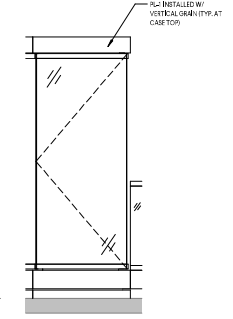
HORIZONTAL - LOW VOLTAGE LIGHTING TRACK WITH WARD QUARTER STANDARDS - LOW VOLTAGE TRANSFORMER TO BE LOCATED IN REAR VENT

PL-2 AT CASE CEILING

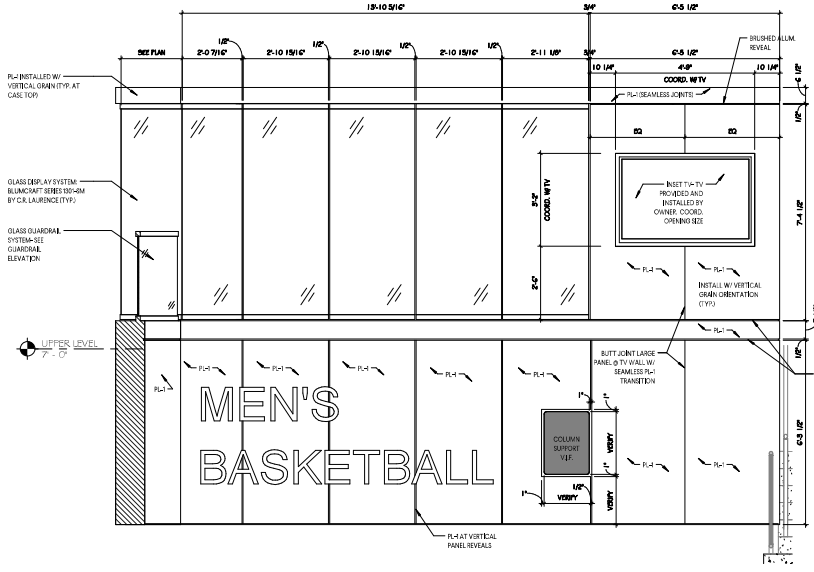
3 NORTH TROPHY CASE CEILING PLAN
12'-0"



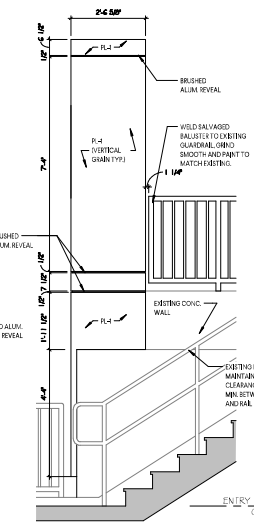
6 FRONT ELEVATION
12'-0"



7 END ELEVATION
12'-0"



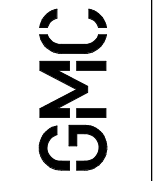
5 REAR ELEVATION
12'-0"



2 RAILING ELEVATION
12'-0"

MILLWORK FINISH LEGEND	
PL-4	MILSONART 'KABINET' FINISH-46 INSTALL WITH GRAN IN VERTICAL DIRECTION IN ALL LOCATIONS GRAN TO ALIGN ACROSS ALL CORNERS
PL-4	MILSONART WHITE LAMINATE AS SELECTED BY ARCHITECT
SS-4	MILSONART WHITE SOLID SURFACE AS SELECTED BY ARCHITECT
RS-1	RUBBER BASE- 4" BLACK COVE BASE BY JOHNSONITE

11/27/2017 9:28:21 AM



1320 Main Street, Suite 300
Columbia, SC 29201
T 803.724.1882
GMCNETWORK.COM

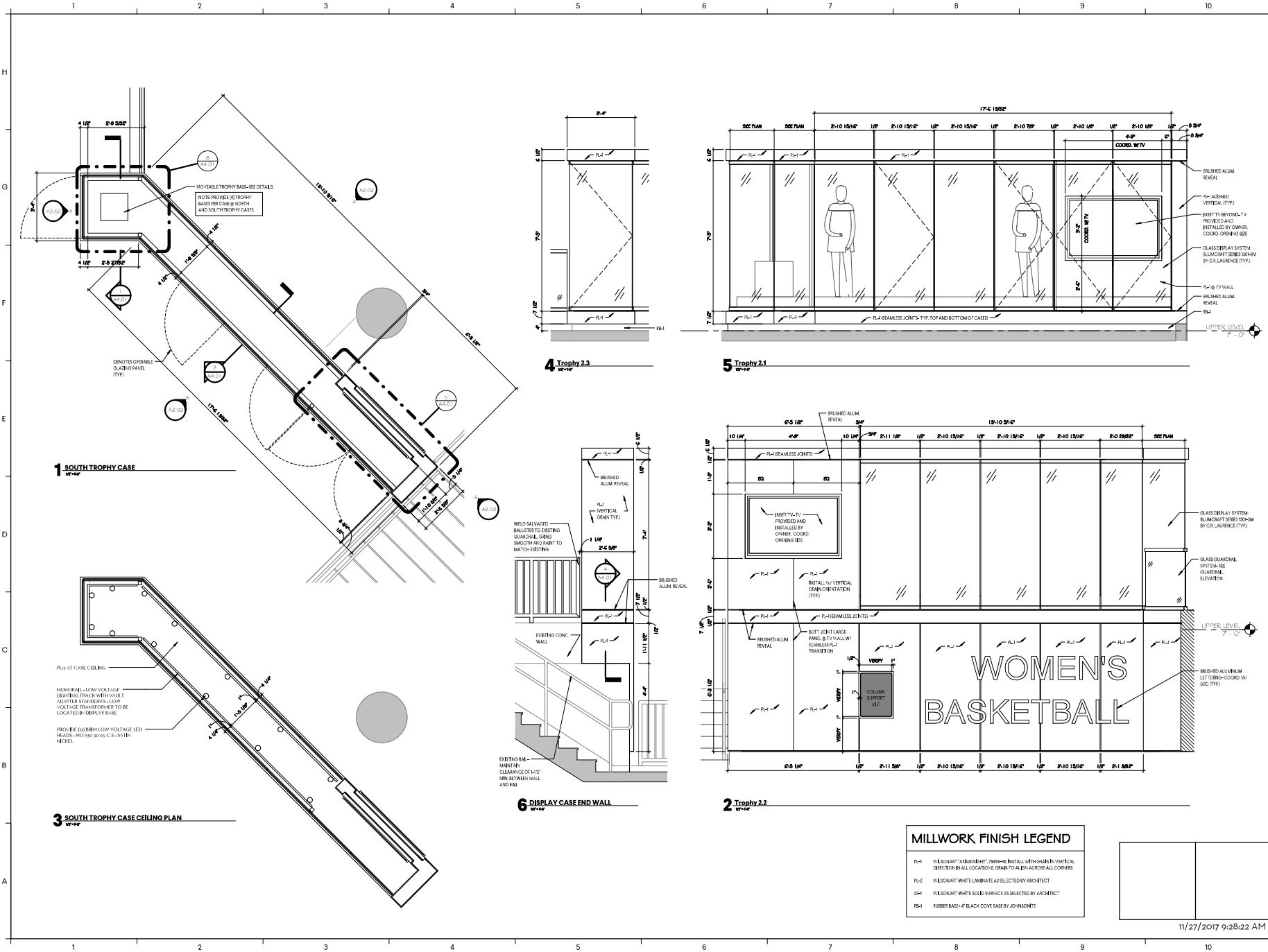
ISSUE	DATE
07/25/17	

UNIVERSITY OF SOUTH CAROLINA
CLA TROPHY DISPLAY
801 Lincoln St
Columbia, SC
GMC # ACOL170003

NORTH TROPHY CASE

A2.01

11/27/2017 9:28:22 AM



MILLWORK FINISH LEGEND

PL-1	WILSONART 'ASBANKNIGHT' 24616-08 INSTALL WITH GRAN IN VERTICAL DIRECTION IN ALL LOCATIONS. GRAN TO ALIGN ACROSS ALL CORNERS
PL-2	WILSONART WHITE LAMINATE AS SELECTED BY ARCHITECT
SP-1	WILSONART WHITE SOLID SURFACE AS SELECTED BY ARCHITECT
RB-1	RUBBER BASE- 4" BLACK COVE BASE BY JOHNSONITE

GMC

1320 Main Street, Suite 300
Columbia, SC 29201
T 803.724.1882
GMCNETWORK.COM

ISSUE	DATE	DESCRIPTION
	10/25/17	

UNIVERSITY OF SOUTH CAROLINA
CLA TROPHY DISPLAY
801 Lincoln St
Columbia, SC
GMC # ACOL170003

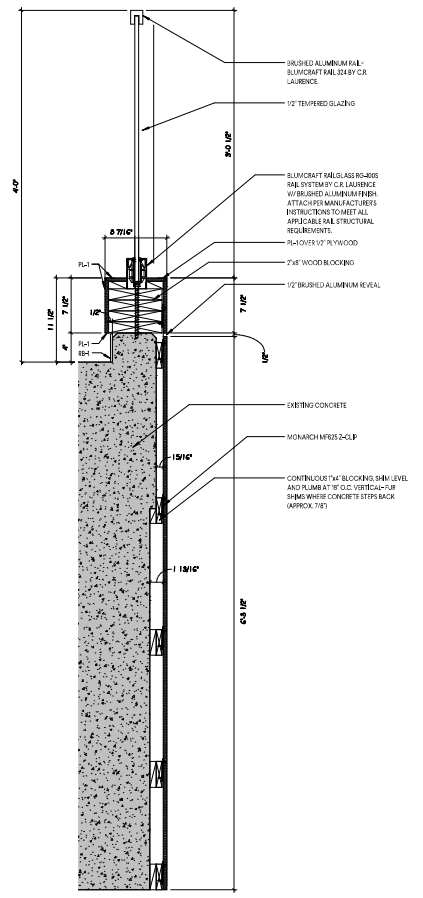
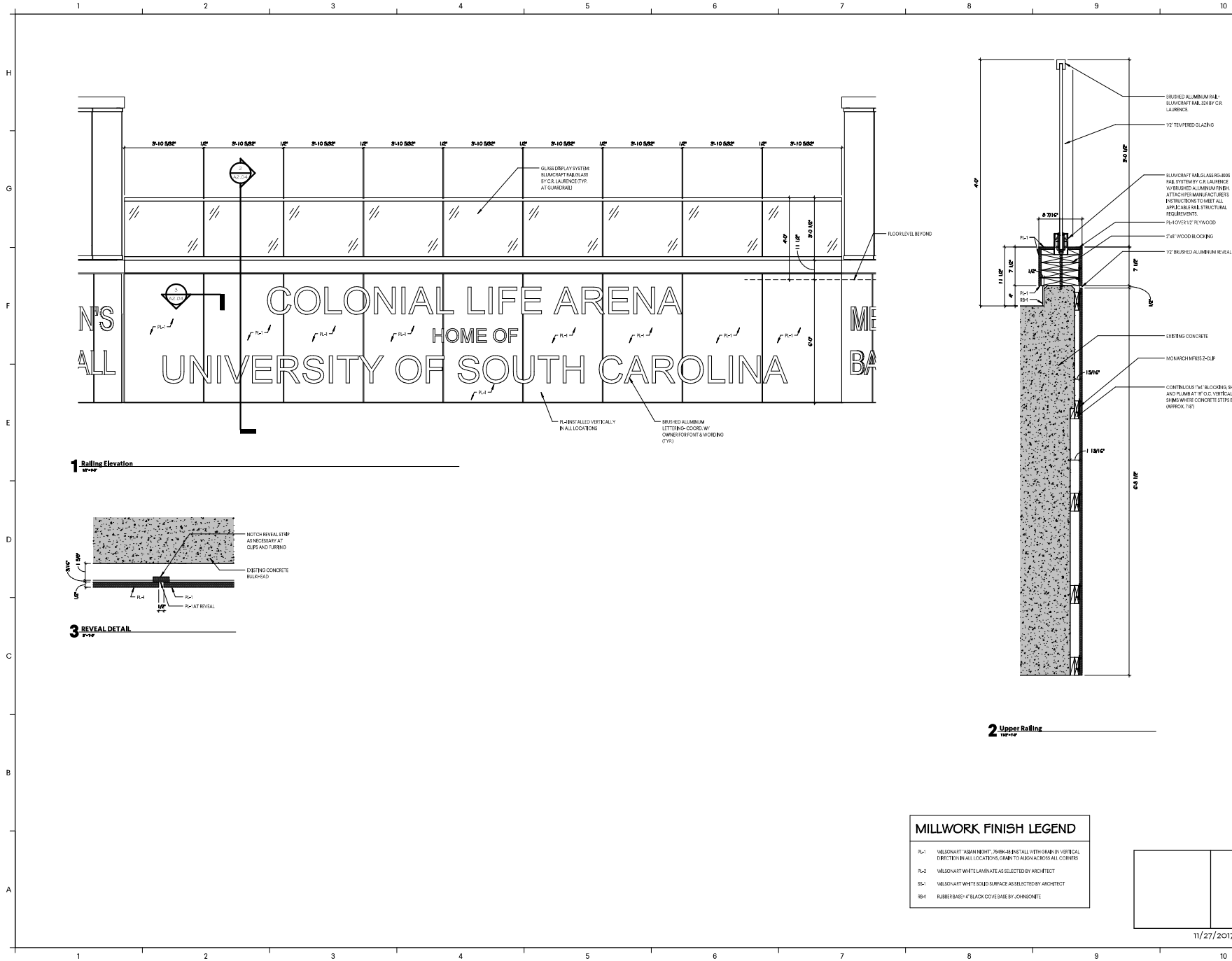
DRAWN BY: LCB/AMW
CHECKED BY: MWW

SOUTH TROPHY CASE

A2.02

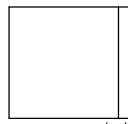
11/27/2017 9:28:22 AM

11/27/2017 9:28:23 AM



2 Upper Railing

MILLWORK FINISH LEGEND	
764	WILSONART KERNAMITE: FINISH IS INSTALLED WITH GRAB-BY VERTICAL DIRECTION IN ALL LOCATIONS. GRAB-TO ALIGN ACROSS ALL CORNERS.
762	WILSONART WHITE LAMINATE AS SELECTED BY ARCHITECT
754	WILSONART WHITE SOLID SURFACE AS SELECTED BY ARCHITECT
764	RUBBER BASE-4" BLACK COVE BASE BY JOHNSONITE



11/27/2017 9:28:23 AM



1320 Main Street, Suite 300
Columbia, SC 29201
T 803.724.1882
GMCNETWORK.COM

ISSUE	DATE
	10/25/17

UNIVERSITY OF SOUTH CAROLINA CLA TROPHY DISPLAY
801 Lincoln St Columbia, SC
GMC # ACOL170003

GUARD RAIL

A2.04

A

