



USC BUSINESS PARTNERSHIP FOUNDATION  
ON BEHALF OF  
USC CAMPUS PLANNING & CONSTRUCTION

PROJECT NAME:  
UNIVERSITY OF SOUTH CAROLINA  
DARLA MOORE SCHOOL OF BUSINESS CONSTRUCTION

USE PROJECT NUMBER:  
027-4069-AC-3

743 GREENE STREET  
COLUMBIA, SC 29208  
TEL: 803 777 4022 FAX: 803 777 0484

ARCHITECT:  
MICHAEL VINKY ARCHITECTS PC  
50 VAN DAM STREET  
NEW YORK, NY 10013  
TEL: 212 254 5800 FAX: 212 924 5808

STRUCTURAL ENGINEER, MEP ENGINEER,  
CIVIL ENGINEER, FIRE PROTECTION  
ENGINEER:  
STEVENS & WILKINSON, SC  
2501 MAIN STREET, FLOOR 6  
COLUMBIA, SC 29201-5801  
TEL: 803 765 8300 FAX: 803 754 6289

TELECOMMUNICATIONS, AUDIOVISUAL & ACoustICS:  
JAFFE BOLDEN Acoustics, INC.  
1914 WASHINGTON STREET  
MORRISVILLE, NC 27554-3007  
TEL: 289 838 4107 FAX: 289 838 4108

LANDSCAPE ARCHITECT:  
GRUBB-OTTENBELL ASSOCIATES  
400 BELTLINE BOULEVARD  
COLUMBIA, SC 29205  
TEL: 803 738 9525 FAX:

SURVEYOR:  
BP BARBER & ASSOCIATES, INC.  
801 RESEARCH DRIVE  
COLUMBIA, SC 29202-1116  
TEL: 803 429 4028 FAX:

BUILDING CODE:  
HUGHES ASSOCIATES  
2400 CONVERSE DRIVE, SUITE 817  
BALTIMORE, MD 21227-3652  
TEL: 410 731 5777 FAX: 410 737 8888

LIGHTING DESIGNER:  
ONE LUX STUDIO, LLC  
37 WEST 57TH STREET  
NEW YORK, NY 10019  
TEL: 212 251 5792 FAX: 212 415 3700

FOOD & WASTE MANAGEMENT:  
WILLIAM CARPIS & ASSOCIATES, INC.  
885 EAST TURKIS AVE, SUITE 600  
DENVER, CO 80227  
TEL: 303 449 5600 FAX: 303 449 5660

SEWAGE & WASTEWORKING:  
RAPHAEL VINKY ARCHITECTS PC  
50 VAN DAM STREET  
NEW YORK, NY 10013  
TEL: 212 924 5800 FAX: 212 924 5808

SYSTEMS ENGINEER:  
ROBERT SCHWARTZ & ASSOCIATES  
585 2ND AVE., 17TH FLOOR  
NEW YORK, NY 10018  
TEL: 212 491 3248 FAX: 212 493 1910

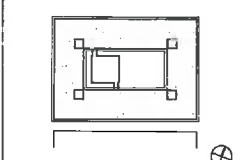
BID PACKAGE 3  
ENCLOSURE/SITE/MEPFP/INTERIOR  
MAY 14, 2012

PHASE:

01  
AZW1

SEAL & SIGNATURE

ISSUE NO.	ISSUE DATE	ISSUE NO.	ISSUE DATE	ISSUE NO.	ISSUE DATE
1	2012.05.14	2	2012.04.18	3	2012.01.04
4	2011.11.14	5	2011.10.04	6	2011.08.05
7	2011.07.22	8	2011.06.04	9	2011.05.23
10	2011.04.29				



KEY PLAN & NORTH-SOUTH  
IF THIS DRAWING IS NOT 30" X 42" IT IS A REDUCED PRINT;  
REFER TO GRAPHIC SCALE



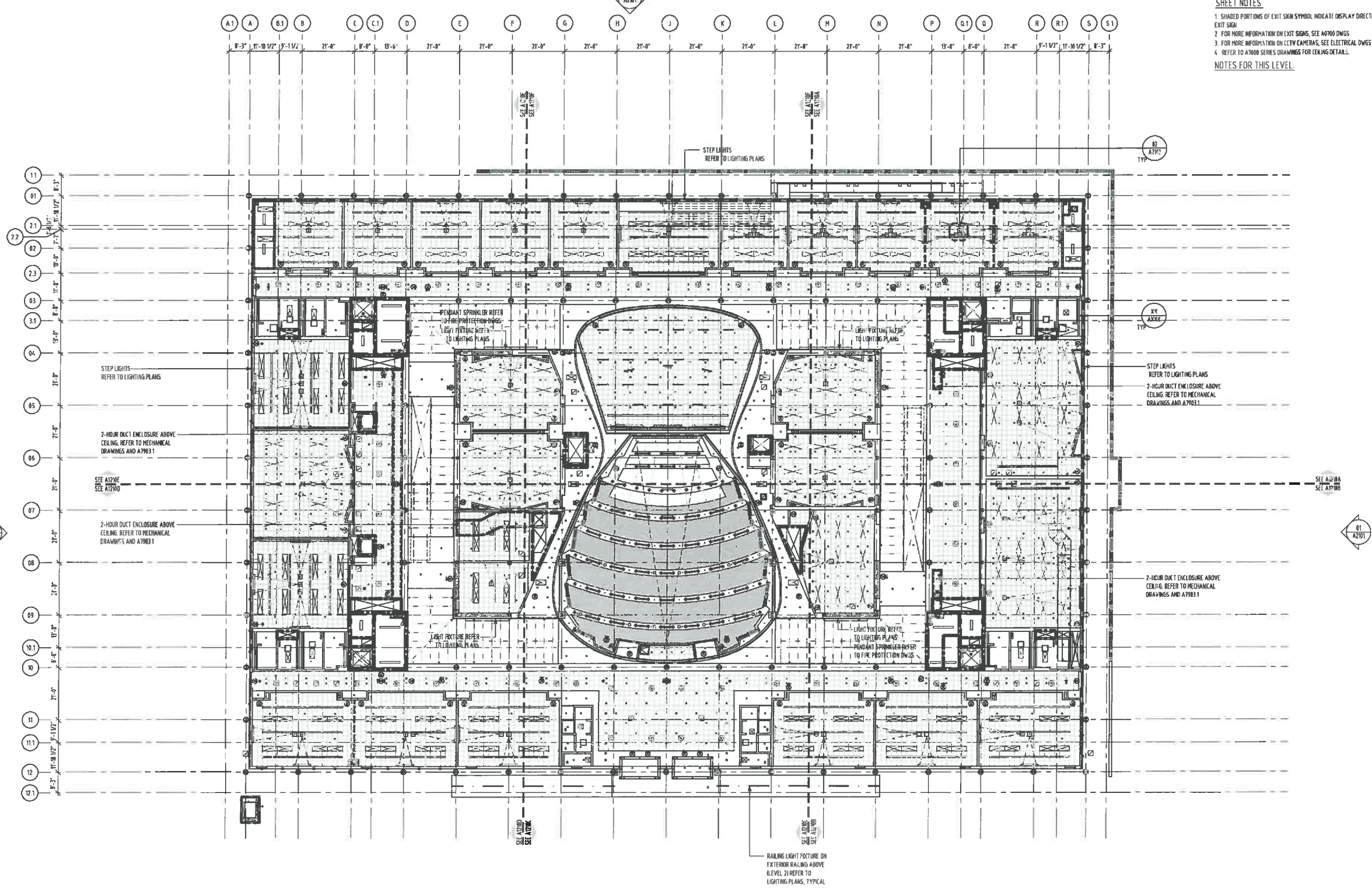
1/8" = 1'-0"  
REFLECTED CEILING PLAN  
LEVEL 1

SHEET TITLE:  
A1210  
SHEET NUMBER:

LEGEND:  
----- SMOKE RESISTANT CONSTRUCTION  
- - - - - 1-HOUR FIRE RESISTANCE RATING  
- - - - - 2-HOUR FIRE RESISTANCE RATING  
- - - - - 2-HOUR HORIZONTAL DUCT ENCLOSURE

SHEET NOTES:  
1. SHADED PORTIONS OF EXIT SIGN SYMBOL INDICATE DIRECTION OF EXIT SIGN  
2. FOR MORE INFORMATION ON EXIT SIGNS, SEE A4700 DWGS  
3. FOR MORE INFORMATION ON CCTV CAMERAS, SEE ELECTRICAL DWGS  
4. REFER TO A1000 SERIES DRAWINGS FOR CEILING DETAIL.

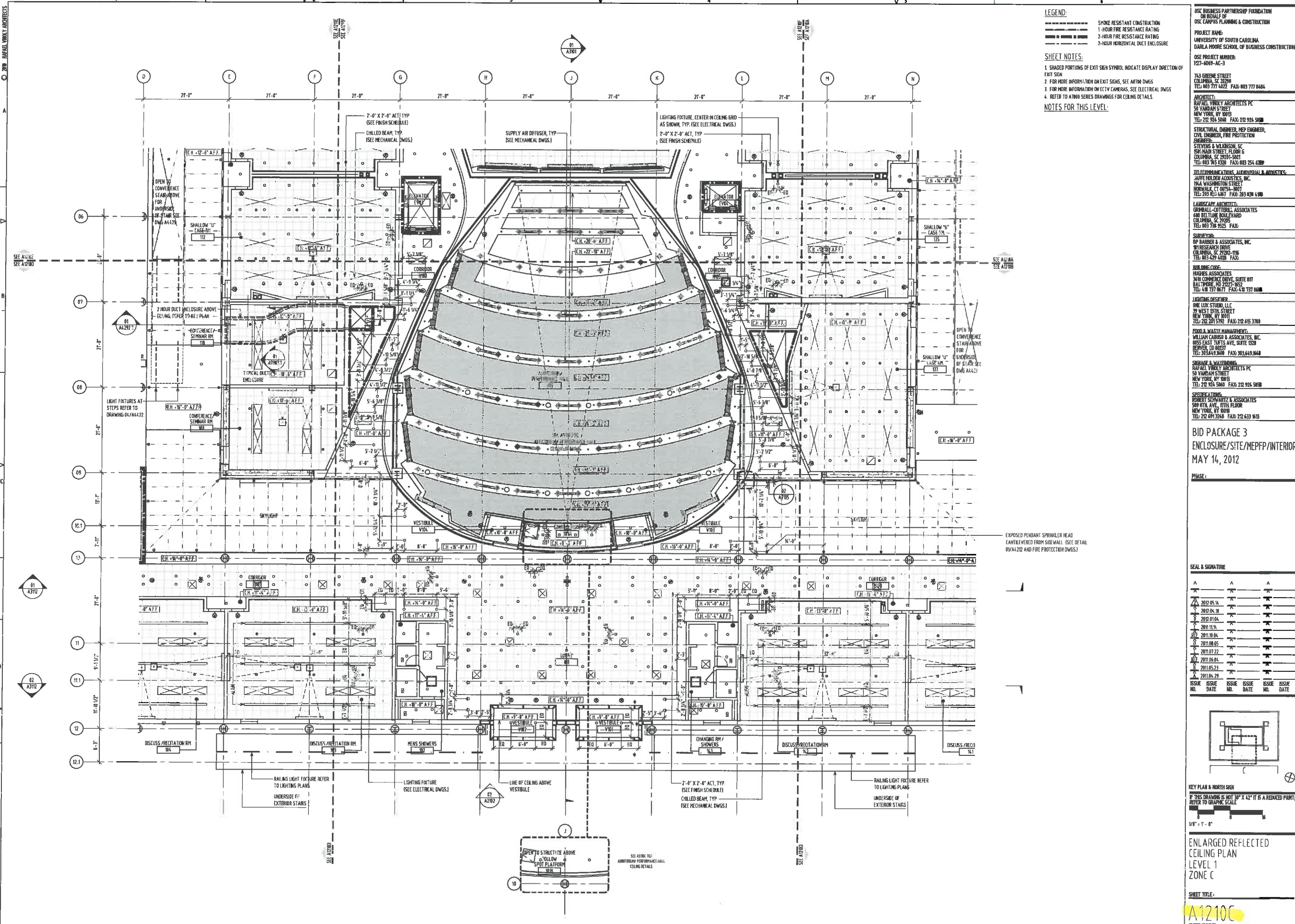
NOTES FOR THIS LEVEL:



O 200 MICHAEL VINKY ARCHITECTS



2/2



**LEGEND:**

- SPRINKLE RESISTANT CONSTRUCTION
- 1-HOUR FIRE RESISTANCE RATING
- 2-HOUR FIRE RESISTANCE RATING
- 2-HOUR HORIZONTAL DUCT ENCLOSURE

**SHEET NOTES:**

- SHADED PORTIONS OF EXIT SIGN SYMBOL INDICATE DISPLAY DIRECTION OF EXIT SIGN
- FOR MORE INFORMATION ON EXIT SIGNS, SEE A7100 DWGS
- FOR MORE INFORMATION ON CCTV CAMERAS, SEE ELECTRICAL DWGS
- REFER TO A7000 SERIES DRAWINGS FOR CEILING DETAILS.

**NOTES FOR THIS LEVEL:**

USC BUSINESS PARTNERSHIP FOUNDATION  
ON BEHALF OF  
USC CAMPUS PLANNING & CONSTRUCTION

PROJECT NAME:  
UNIVERSITY OF SOUTH CAROLINA  
DARLA MOORE SCHOOL OF BUSINESS CONSTRUCTION

USE PROJECT NUMBER:  
127-6093-AC-3

743 GREENE STREET  
COLUMBIA, SC 29208  
TEL: 803 777 4422 FAX: 803 777 8404

ARCHITECTS:  
RAFAEL VINOY ARCHITECTS PC  
50 VANAM STREET  
NEW YORK, NY 10013  
TEL: 212 924 5800 FAX: 212 924 5850

STRUCTURAL ENGINEER, MEP ENGINEER,  
CIVIL ENGINEER, FIRE PROTECTION  
ENGINEER:  
STEVENS & WILKINSON SC  
501 HIGH STREET, FLOOR 6  
COLUMBIA, SC 29201-5001  
TEL: 803 765 6300 FAX: 803 254 6289

TELECOMMUNICATIONS, AUDIOVISUAL & ANALYTICS:  
JAFFE HOLDEN ACoustics, INC.  
164 WASHINGTON STREET  
NORWALK, CT 06854-3007  
TEL: 203 853 4877 FAX: 203 839 4188

LANDSCAPE ARCHITECT:  
ORNBALL-CUTLER, ASSOCIATES  
600 BELTLINE BOULEVARD  
COLUMBIA, SC 29205  
TEL: 803 738 9525 FAX:

SURVEYOR:  
RP BARBER & ASSOCIATES, INC.  
801 RESEARCH DRIVE  
COLUMBIA, SC 29202-1116  
TEL: 803 429 4028 FAX:

BUILDING CODE:  
HUGHES ASSOCIATES  
3400 CONNOR DRIVE, SUITE 817  
BALTIMORE, MD 21227-8653  
TEL: 410 737 8677 FAX: 410 737 8688

LIGHTING DESIGNER:  
ONE LUX STUDIO, LLC  
79 WEST 37TH STREET  
NEW YORK, NY 10018  
TEL: 212 201 5192 FAX: 212 615 3700

FOOD & WASTE MANAGEMENT:  
WILLIAM CARROLL & ASSOCIATES, INC.  
1055 EAST 70TH AVE, SUITE 610  
BENNETT, CO 60107  
TEL: 303 443 8600 FAX: 303 443 8640

SHRIMP & WAREHOUSING:  
RAFAEL VINOY ARCHITECTS PC  
50 VANAM STREET  
NEW YORK, NY 10013  
TEL: 212 924 5800 FAX: 212 924 5850

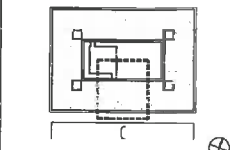
SYSTEMS ARCHITECT:  
ROBERT SCHWARTZ & ASSOCIATES  
500 8TH AVE., 17TH FLOOR  
NEW YORK, NY 10018  
TEL: 212 691 3268 FAX: 212 633 1619

BID PACKAGE 3  
ENCLOSURE/SITE/MEPP/INTERIOR  
MAY 14, 2012

PHASE:

**SEAL & SIGNATURE**

DATE	BY	DATE	BY	DATE	BY
2012.05.14		2012.04.18		2012.01.04	
2011.11.14		2011.10.04		2011.08.05	
2011.07.22		2011.06.04		2011.05.23	
2011.04.29					



KEY PLAN & NORTH SIGN  
IF THIS DRAWING IS NOT 30" X 42" IT IS A REDUCED PRINT;  
REFER TO GRAPHIC SCALE

1/8" = 1' - 0"

ENLARGED REFLECTED  
CEILING PLAN  
LEVEL 1  
ZONE C

SHEET TITLE:  
A1210C  
SHEET NUMBER:



















