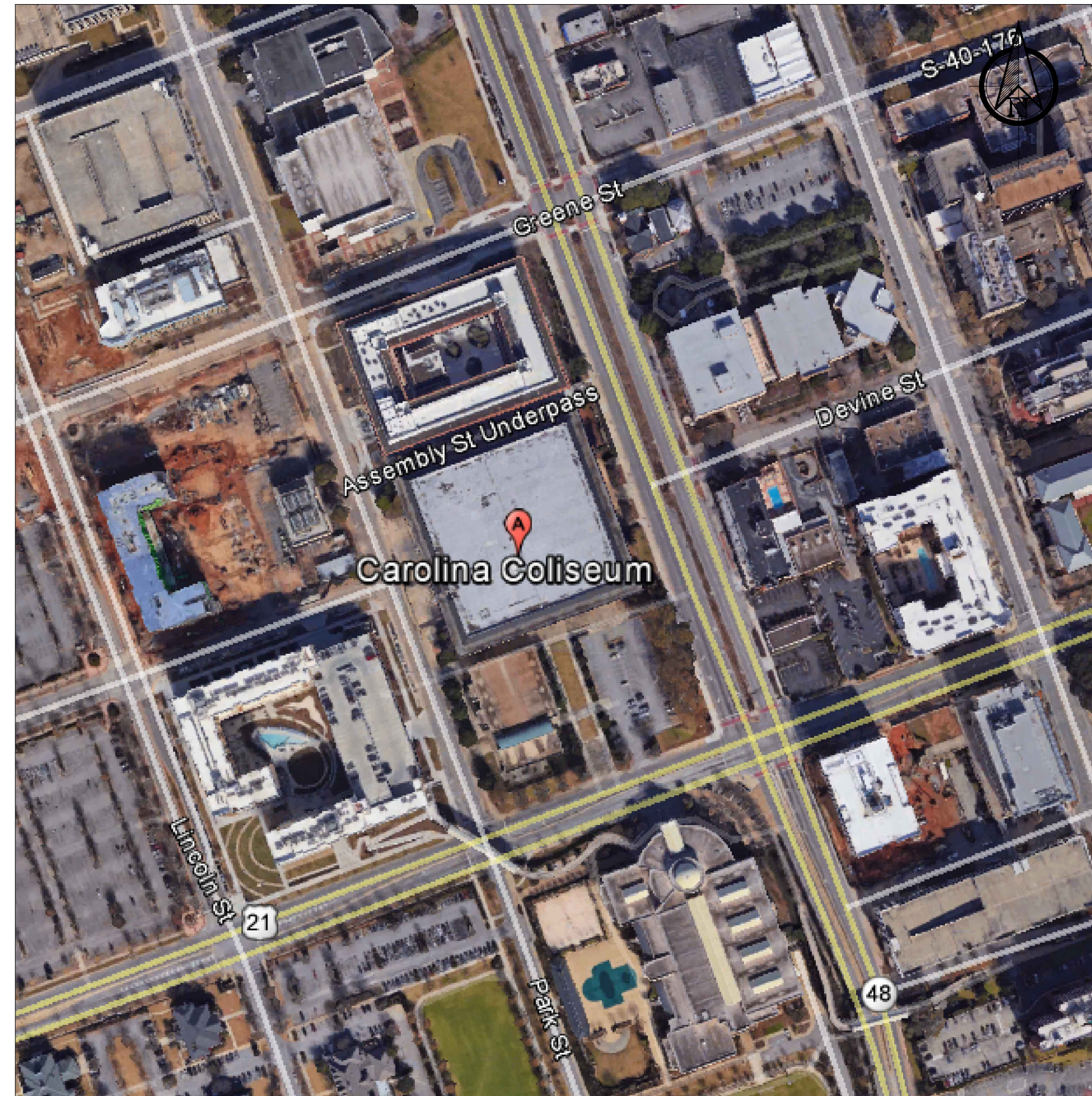


VICINITY MAP



SITE MAP

# CAROLINA COLISEUM ROOF REPAIR

UNIVERSITY OF SOUTH CAROLINA  
 701 ASSEMBLY STREET  
 COLUMBIA, SOUTH CAROLINA, 29201  
 STATE PROJECT NO. H27-Z334  
 REI PROJECT NO. 17CHS-023



UNIVERSITY OF  
**SOUTH CAROLINA**

DRAWING INDEX

R-001	COVER SHEET
R-101	ROOF PLAN
R-102	INSULATION ATTACHMENT PLAN
R-201	ROOF DETAILS
R-202	ROOF DETAILS

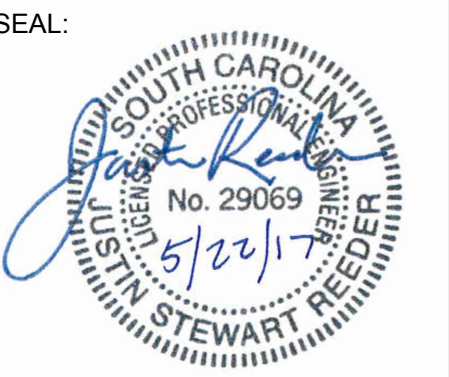
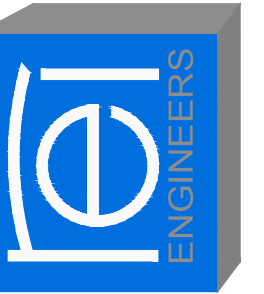
ABBREVIATION LIST

MAX.	MAXIMUM
MIN.	MINIMUM
N.I.C.	NOT IN CONTRACT
N.T.S.	NOT TO SCALE
O.C.	ON CENTER
S.S.	STAINLESS STEEL
SIM.	SIMILAR
TERM.	TERMINATION
TYP.	TYPICAL

CODE COMPLIANCE REFERENCE LIST

2015 INTERNATIONAL BUILDING CODE WITH SC MODIFICATIONS
2015 INTERNATIONAL FIRE CODE WITH SC MODIFICATIONS
2015 INTERNATIONAL PLUMBING CODE
2015 INTERNATIONAL MECHANICAL CODE
2009 INTERNATIONAL ENERGY CONSERVATION CODE
2015 INTERNATIONAL FUEL GAS CODE WITH SC MODIFICATIONS
2014 NATIONAL ELECTRIC CODE

ROOFING, WATERPROOFING & BUILDING  
 ENVELOPE ENGINEERS & CONSULTANTS  
 www.reiengineers.com



**CAROLINA COLISEUM ROOF REPAIR**  
 UNIVERSITY OF SOUTH CAROLINA  
 COLUMBIA, SOUTH CAROLINA  
 STATE PROJECT #: H27-Z334  
 REI PROJECT #: 17CHS-023

REVISION #	REVISION DATE
1	
2	
3	
4	

DRAWN BY: AD / RLW  
 SCALE: N.T.S.  
 DATE: 05/22/2017

DRAWING:  
**R-001**

SHEET 1 OF 5  
 COVER SHEET

These documents are the property of REI Engineers, Inc. (REI) and retains all rights therein, including copyrights. It may only be used in a manner consistent with REI's rights while REI is providing service for the specific project identified or referred to herein or extensions thereto. It may not be used for any other purpose except with the express written agreement of, and compensation to, REI Engineers, Inc.

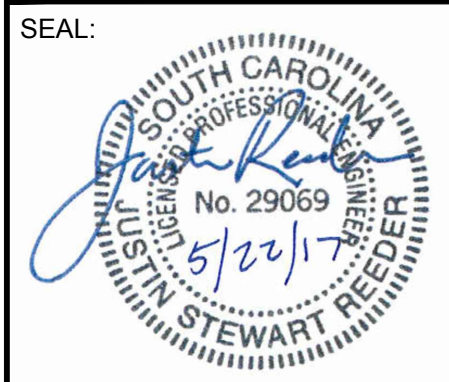
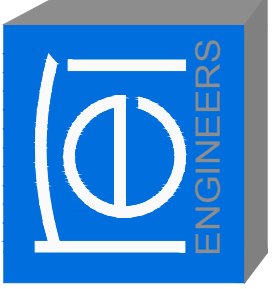


SECTOR	AREA (SQUARE FEET)
A	±89,100
TOTAL	±89,100

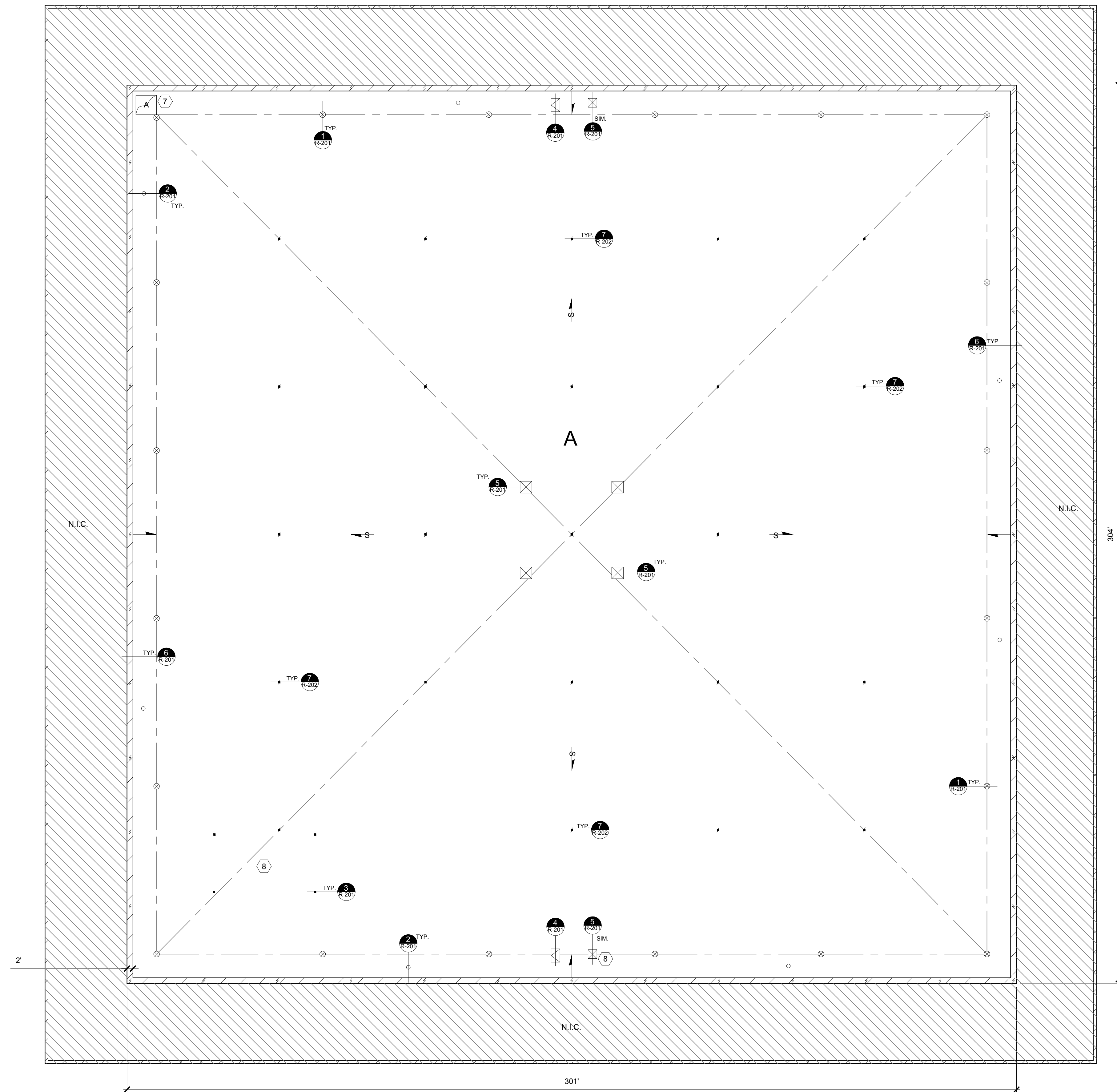
\*\*CONTRACTOR TO VERIFY ALL QUANTITIES PRIOR TO BIDDING\*\*



ROOFING, WATERPROOFING & BUILDING  
ENVELOPE ENGINEERS & CONSULTANTS  
www.reiengineers.com



**CAROLINA COLISEUM ROOF REPAIR**  
UNIVERSITY OF SOUTH CAROLINA  
COLUMBIA, SOUTH CAROLINA  
STATE PROJECT #: H27-Z334  
REI PROJECT #: 17CHS-023



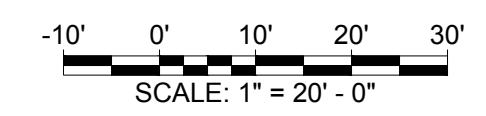
KEY	
	PARAPET WALL
	ROOF DRAIN
	PIPE PENETRATION
	PITCH POCKET
	LIGHTNING ARRESTOR
	EQUIPMENT CURB
	ROOF HATCH
	ANTENNA
	RIDGE-HIP-VALLEY
	STRUCTURAL SLOPE
	EXISTING TAPERED SLOPE
	DETAIL NUMBER

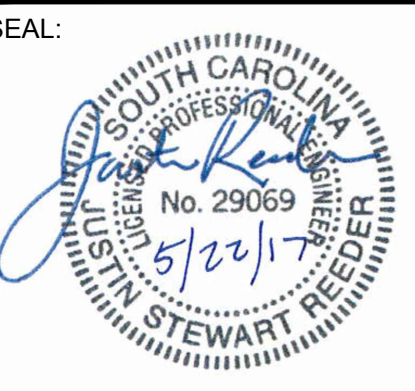
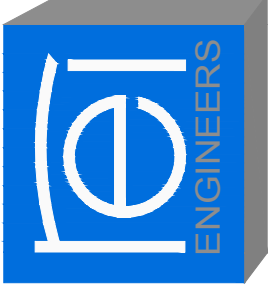
- #) NOTES:
- CONTRACTOR TO VERIFY EXISTING CURB CONSTRUCTION.
  - INSTALL CRICKETS ON UP SLOPE SIDE OF CURBS.
  - CONTRACTOR TO FIELD VERIFY ALL QUANTITIES AND LOCATIONS.
  - NOTES ARE INTENDED TO PROVIDE TYPICAL LOCATIONS OF WORK. IT IS THE CONTRACTOR'S RESPONSIBILITY TO QUANTIFY ALL LOCATIONS.
  - ONLY ONE DETAIL SYMBOL IS SHOWN FOR EACH TYPE OF ROOF PENETRATION. ALL OTHER SIMILAR PENETRATIONS ARE TO BE FLASHED AS REQUIRED BY THE DETAIL, UNLESS OTHERWISE NOTED.
  - REPAIR OF SITE: CONTRACTOR SHALL REPAIR ALL DAMAGES TO GRASS, TREES, SHRUBS, SIDEWALKS, PAVEMENT, ETC. SURROUNDING THE BUILDING CAUSED DURING THE CONSTRUCTION PROCESS. REPAIRS TO THESE ITEMS SHALL BE PERFORMED TO THE OWNER'S SATISFACTION AT NO ADDITIONAL COST.
  - PROVIDE WALKWAY PAD UNDER ALL CONDENSING UNIT SUPPORT PADS OR EQUIPMENT SUPPORT FRAMES.

REVISION #	REVISION DATE
1	
2	
3	
4	

DRAWN BY: AD / RLW  
SCALE: N.T.S.  
DATE: 05/22/2017

DRAWING:  
**R-101**  
SHEET 2 OF 5  
ROOF PLAN

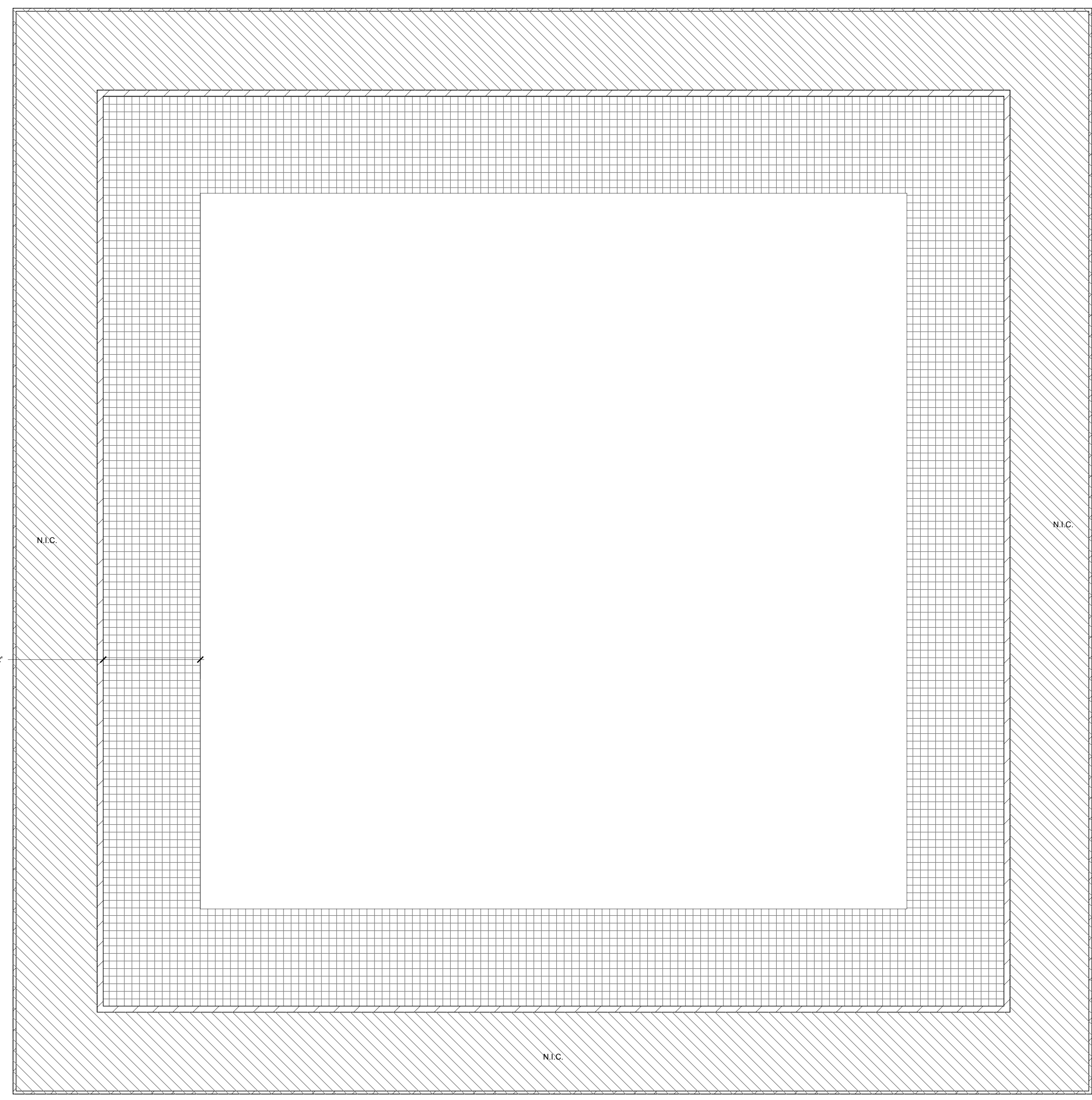
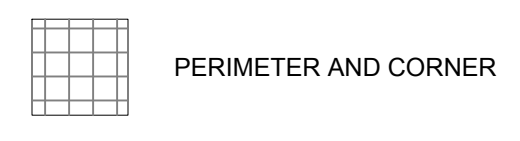
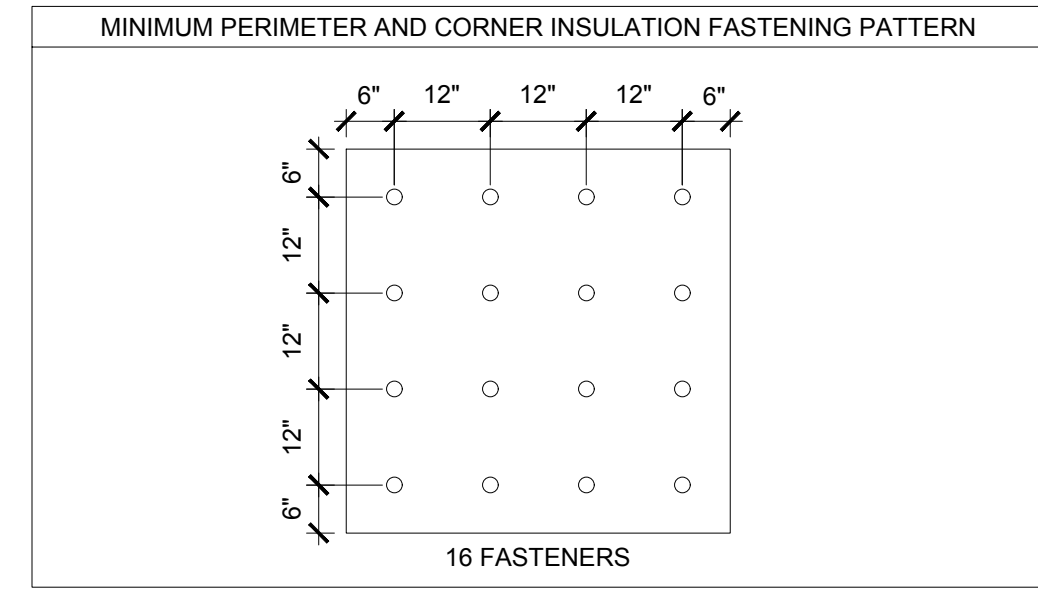
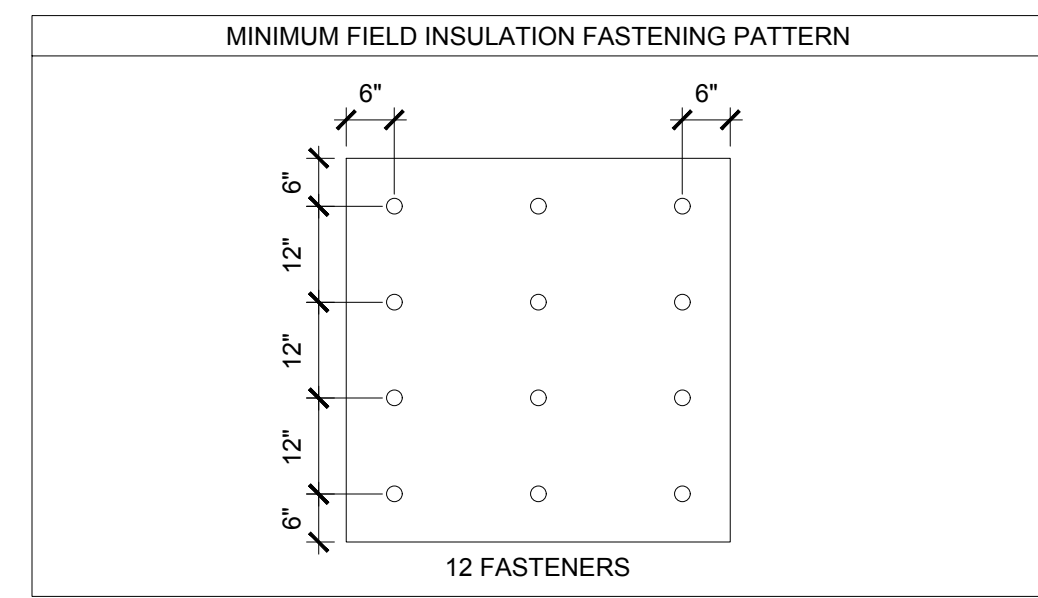




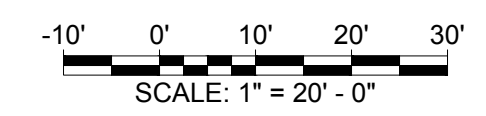
**CAROLINA COLISEUM ROOF REPAIR**  
UNIVERSITY OF SOUTH CAROLINA  
COLUMBIA, SOUTH CAROLINA  
STATE PROJECT #: H27-Z334  
REI PROJECT #: 17CHS-023

REVISION #	REVISION DATE
1	
2	
3	
4	

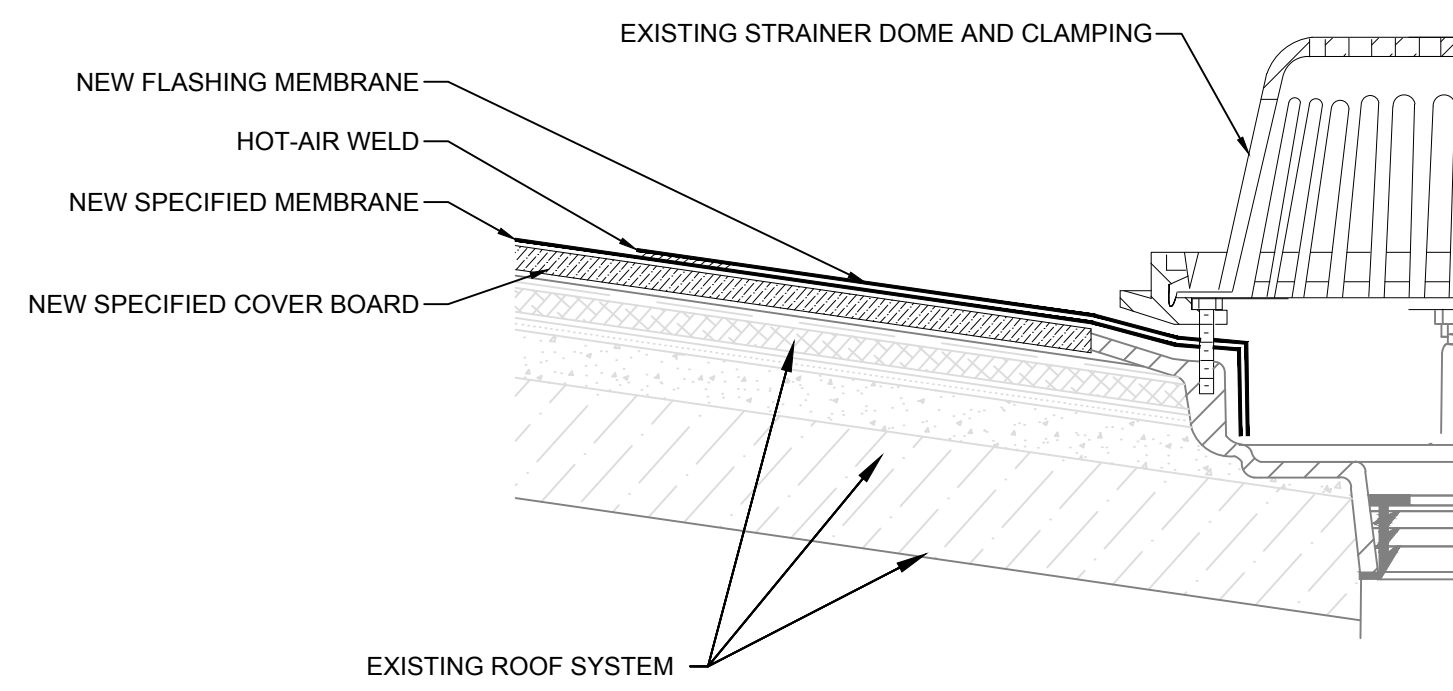
DRAWN BY: AD / R/LW  
SCALE: N.T.S.  
DATE: 05/22/2017  
DRAWING:  
**R-102**  
SHEET 3 OF 5  
INSULATION ATTACHMENT PLAN



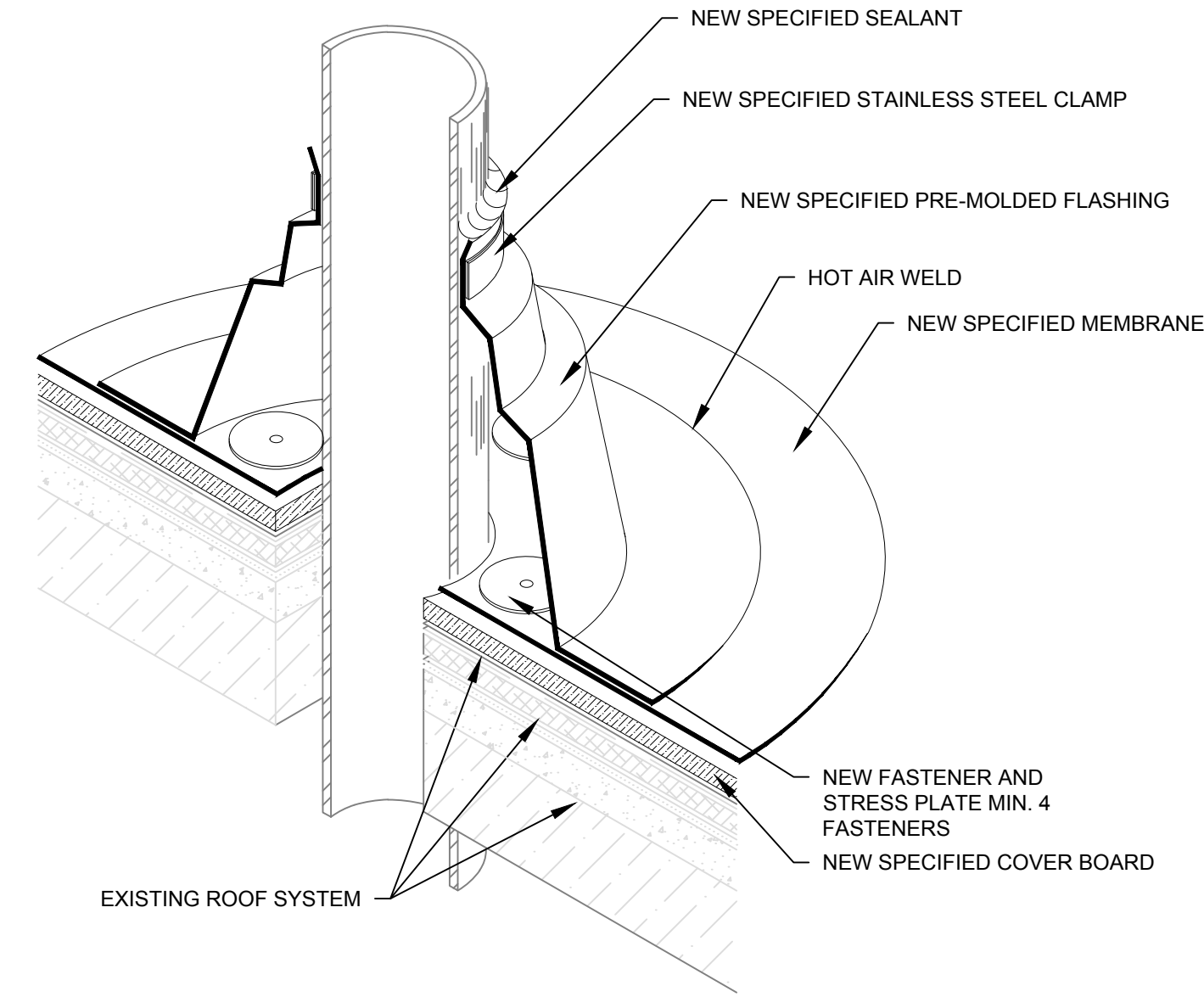
- NOTES:
1. PLACEMENT OF INSULATION FASTENERS SHALL COMPLY WITH BOARD MANUFACTURER'S PUBLISHED LITERATURE AND THE MEMBRANE MANUFACTURER'S REQUIREMENTS.
  2. CUT OR SCORE BOARDS TO CONFORM TO ANY IRREGULAR SUBSTRATE CONDITIONS.
  3. INSTALL NUMBER OF FASTENERS REQUIRED BY MEMBRANE MANUFACTURER'S TESTED ASSEMBLY TO MEET WIND DESIGN UPLIFT PRESSURES SPECIFIED IN SECTION 07 54 00.



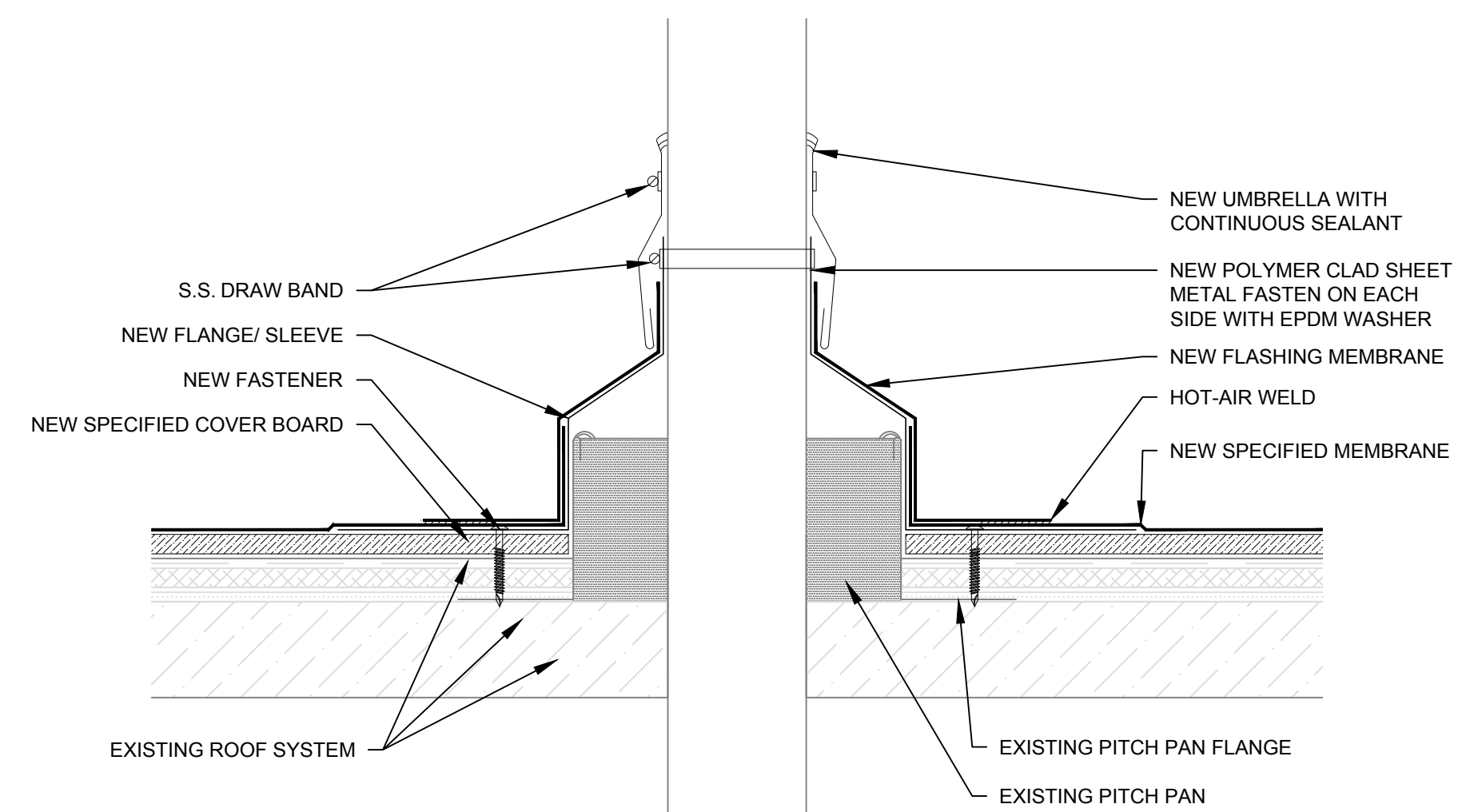




- NOTES:
1. RAISE OR LOWER DRAINS AS NEEDED TO ACCOMMODATE NEW FINISHED ROOF HEIGHT.
  2. LIGHT WEIGHT INSULATING CONCRETE PRESENT ON BACK SLOPE FROM PARAPET.



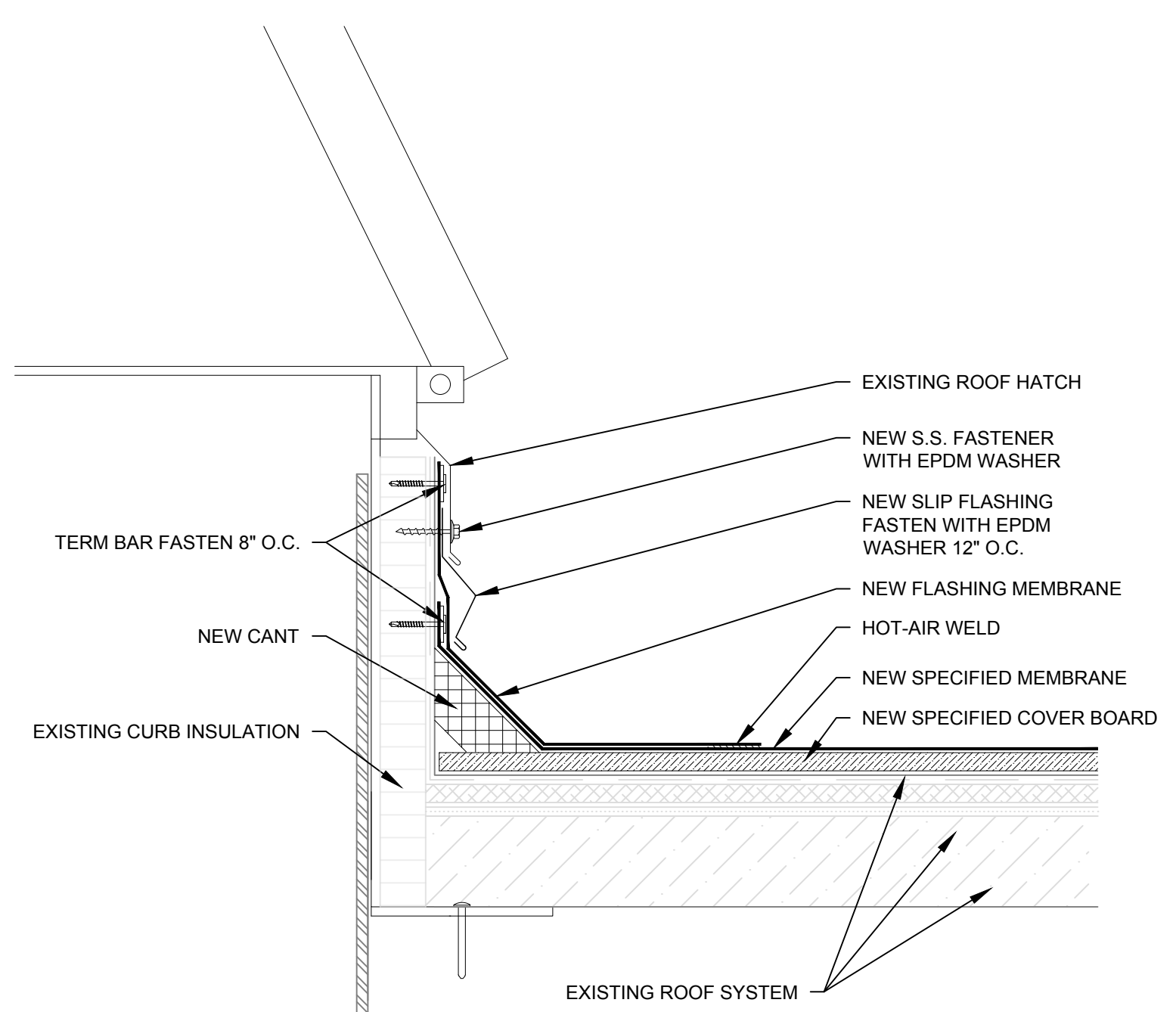
- NOTES:
1. LIGHT WEIGHT INSULATING CONCRETE PRESENT ON BACK SLOPE FROM PARAPET.
  2. ENSURE THAT ALL EQUIPMENT SCREEN SUPPORTS ARE SANDED, PRIMED AND PAINTED AS SPECIFIED PRIOR TO INSTALLATION OF FLASHING.



**3 FLASHING AT EXISTING PITCH PAN WITH PENETRATION**  
SCALE: 3"=1'-0"

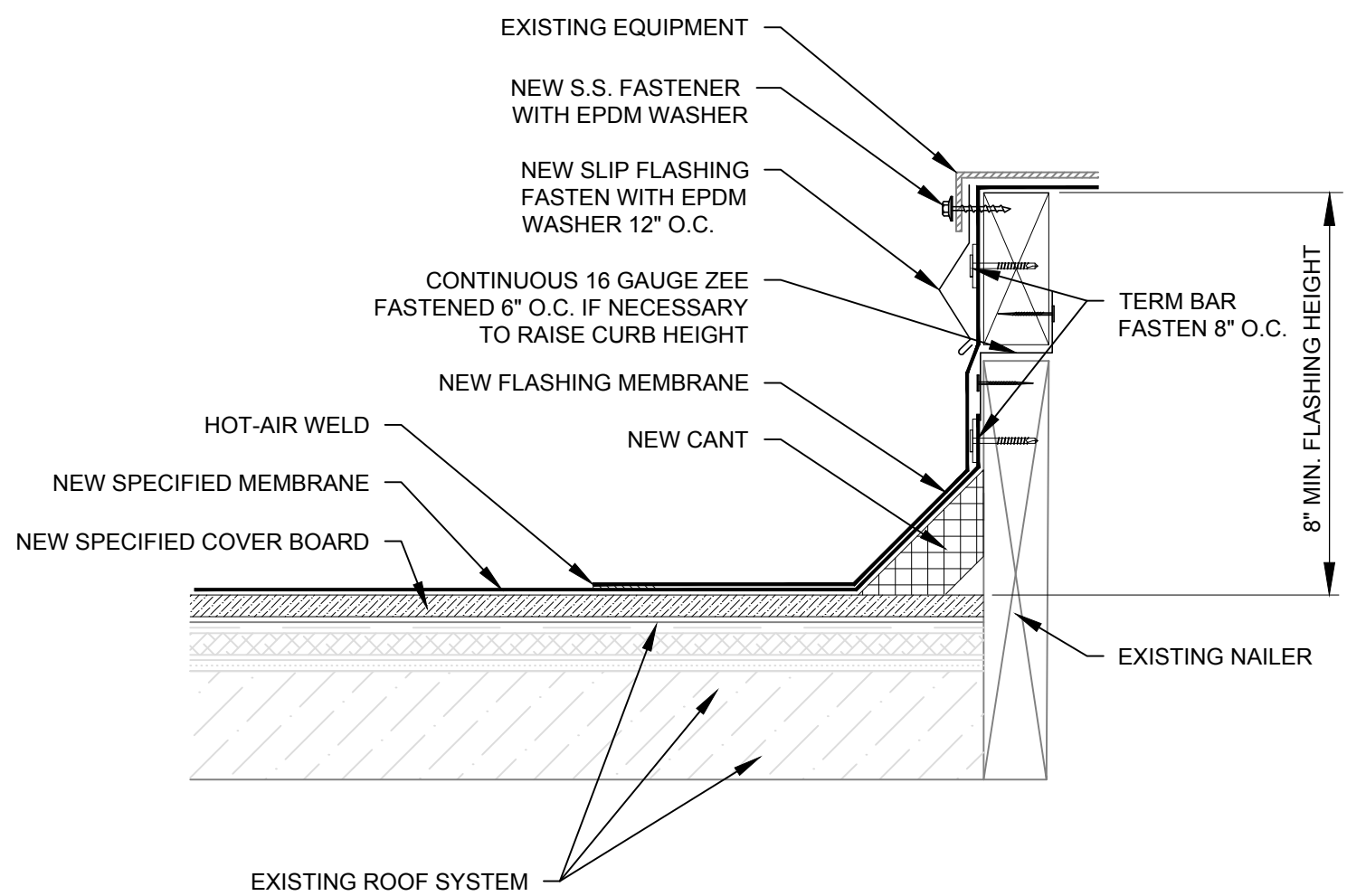
**1 ROOF DRAIN**  
SCALE: 3"=1'-0"

**2 PIPE PENETRATION**  
SCALE: 3"=1'-0"



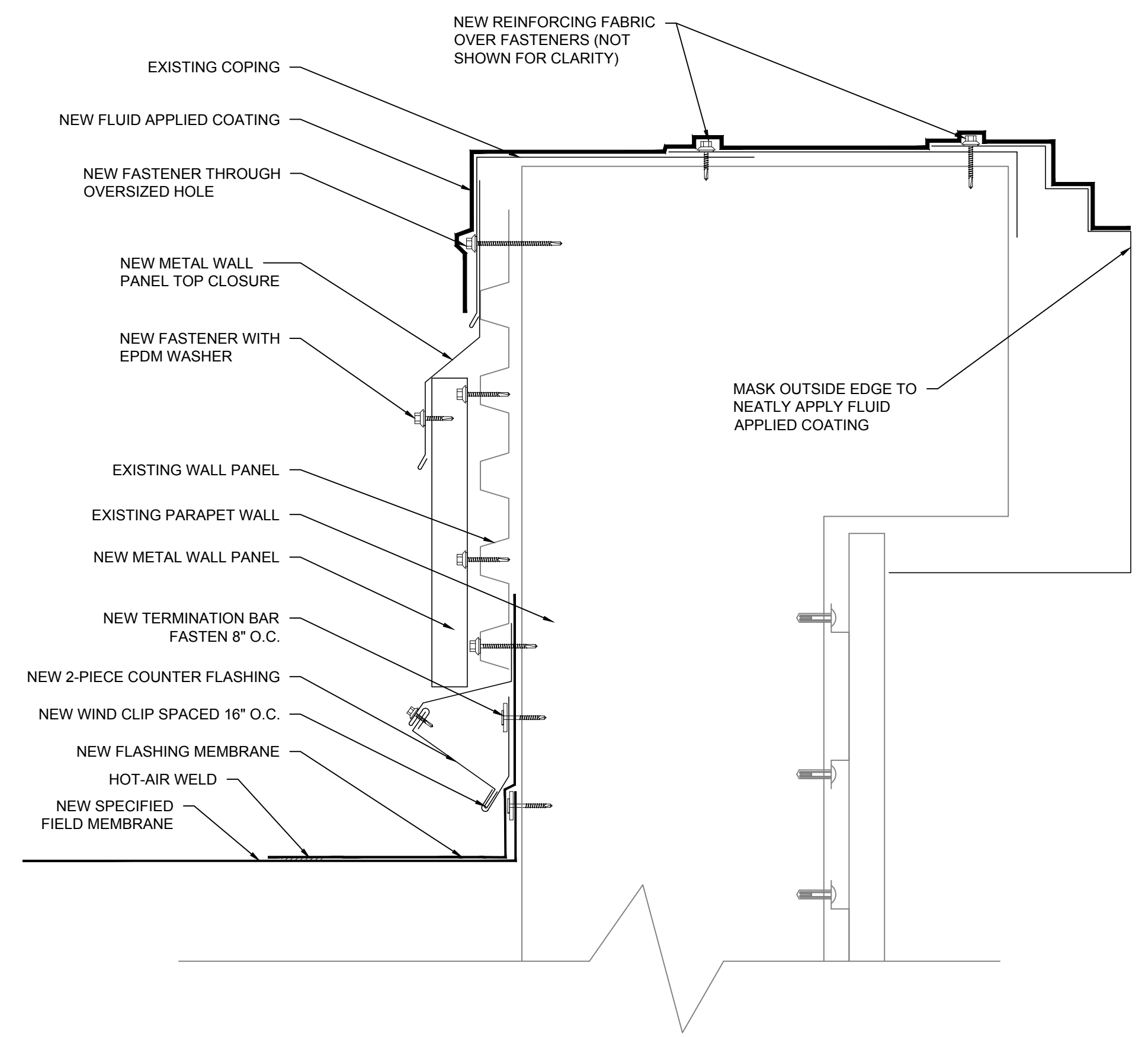
- NOTES:
1. REMOVE EXISTING FLASHING MEMBRANE/ CANTS WHERE APPLICABLE AND REPLACE WITH NEW SPECIFIED FLASHINGS.
  2. CUT EXISTING FIELD PLY TO FIT UNDER NEW SPECIFIED INSULATION (INSULATION AND NAILER THICKNESS MAY DIFFER PER LOCATION).
  3. MAINTAIN A MINIMUM OF 8" OF MEMBRANE FLASHING (FLASHING HEIGHTS MAY VARY).

**4 ROOF HATCH**  
SCALE: 3"=1'-0"



- NOTES:
1. CONTRACTOR TO VERIFY EXISTING CURB CONSTRUCTION.
  2. ADD NAILERS AS NECESSARY TO OBTAIN 8" MINIMUM FLASHING HEIGHT.
  3. PROVIDE NECESSARY MECHANICAL / ELECTRICAL MODIFICATION BY A LICENSED ELEC/MECH CONTRACTOR.

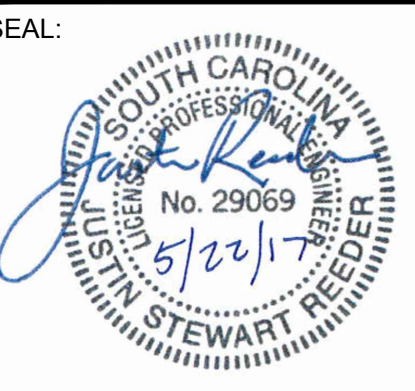
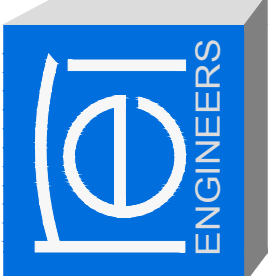
**5 EQUIPMENT CURB**  
SCALE: 3"=1'-0"



- NOTES:
1. FIELD VERIFY ALL CONFIGURATIONS REQUIRED AND ALL DIMENSIONS PRIOR TO FABRICATIONS.
  2. PROVIDE A LICENSED CONTRACTOR FOR ALL NECESSARY MECHANICAL/ELECTRICAL LABOR AND MATERIAL.
  3. PROVIDE INSIDE CORNER CLOSURE FOR METAL WALL PANELS.

**6 ROOF TO PARAPET**  
SCALE: 3"=1'-0"

ROOFING, WATERPROOFING & BUILDING  
ENVELOPE ENGINEERS & CONSULTANTS  
www.reiengineers.com

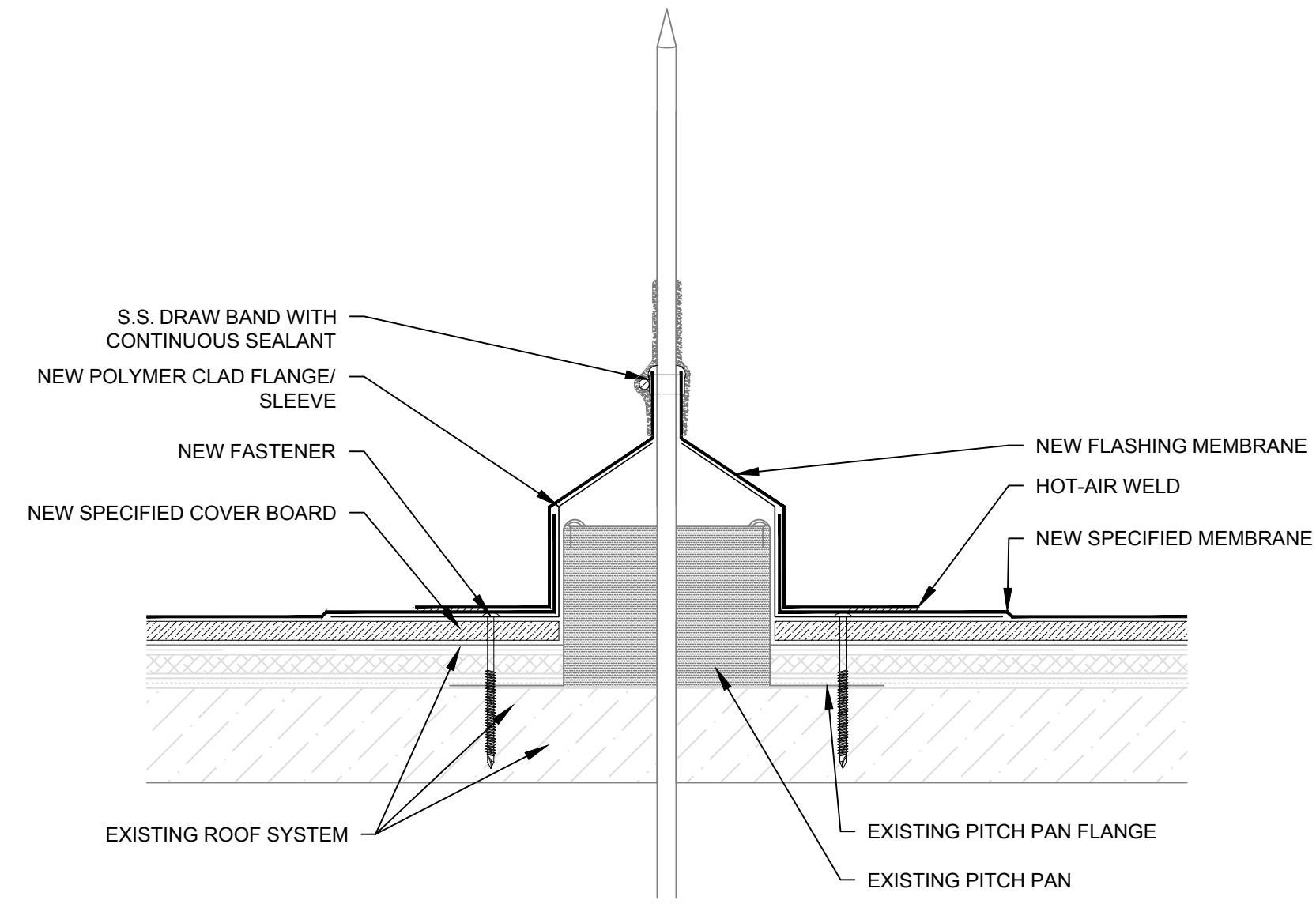


**CAROLINA COLISEUM ROOF REPAIR**  
UNIVERSITY OF SOUTH CAROLINA  
COLUMBIA, SOUTH CAROLINA  
STATE PROJECT #: H27-Z334  
REI PROJECT #: 17CHS-023

REVISION #	REVISION DATE
1	
2	
3	
4	

DRAWN BY: AD / RLW  
SCALE: N.T.S.  
DATE: 05/22/2017

DRAWING:  
**R-201**  
SHEET 4 OF 5  
ROOF DETAILS



NOTES:  
 1. COMPLY WITH THE FLUID APPLIED FLASHING MANUFACTURER'S REQUIREMENTS FOR SUBSTRATE PREPARATION.

DETAIL NOT USED

DETAIL NOT USED

**7** LIGHTNING PROTECTION ROOF FLASHING  
 SCALE: 3"=1'-0"

**8** DETAIL NOT USED  
 SCALE: N.T.S.

**9** DETAIL NOT USED  
 SCALE: N.T.S.

DETAIL NOT USED

DETAIL NOT USED

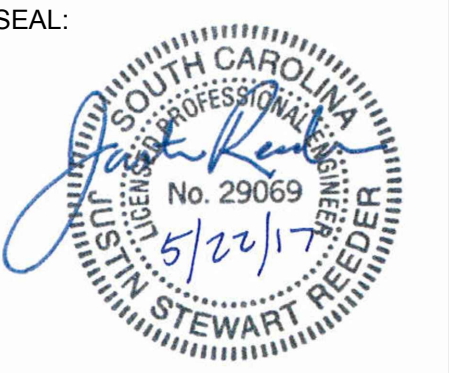
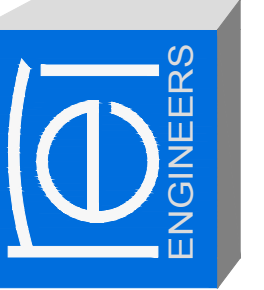
DETAIL NOT USED

**10** DETAIL NOT USED  
 SCALE: N.T.S.

**11** DETAIL NOT USED  
 SCALE: N.T.S.

**12** DETAIL NOT USED  
 SCALE: N.T.S.

ROOFING, WATERPROOFING & BUILDING  
 ENVELOPE ENGINEERS & CONSULTANTS  
 www.reiengineers.com



**CAROLINA COLISEUM ROOF REPAIR**  
 UNIVERSITY OF SOUTH CAROLINA  
 COLUMBIA, SOUTH CAROLINA  
 STATE PROJECT #: H27-Z334  
 REI PROJECT #: 17CHS-023

REVISION #	REVISION DATE
1	
2	
3	
4	

DRAWN BY: AD / R/LW  
 SCALE: N.T.S.  
 DATE: 05/22/2017

DRAWING:  
**R-202**  
 SHEET 5 OF 5  
 ROOF DETAILS