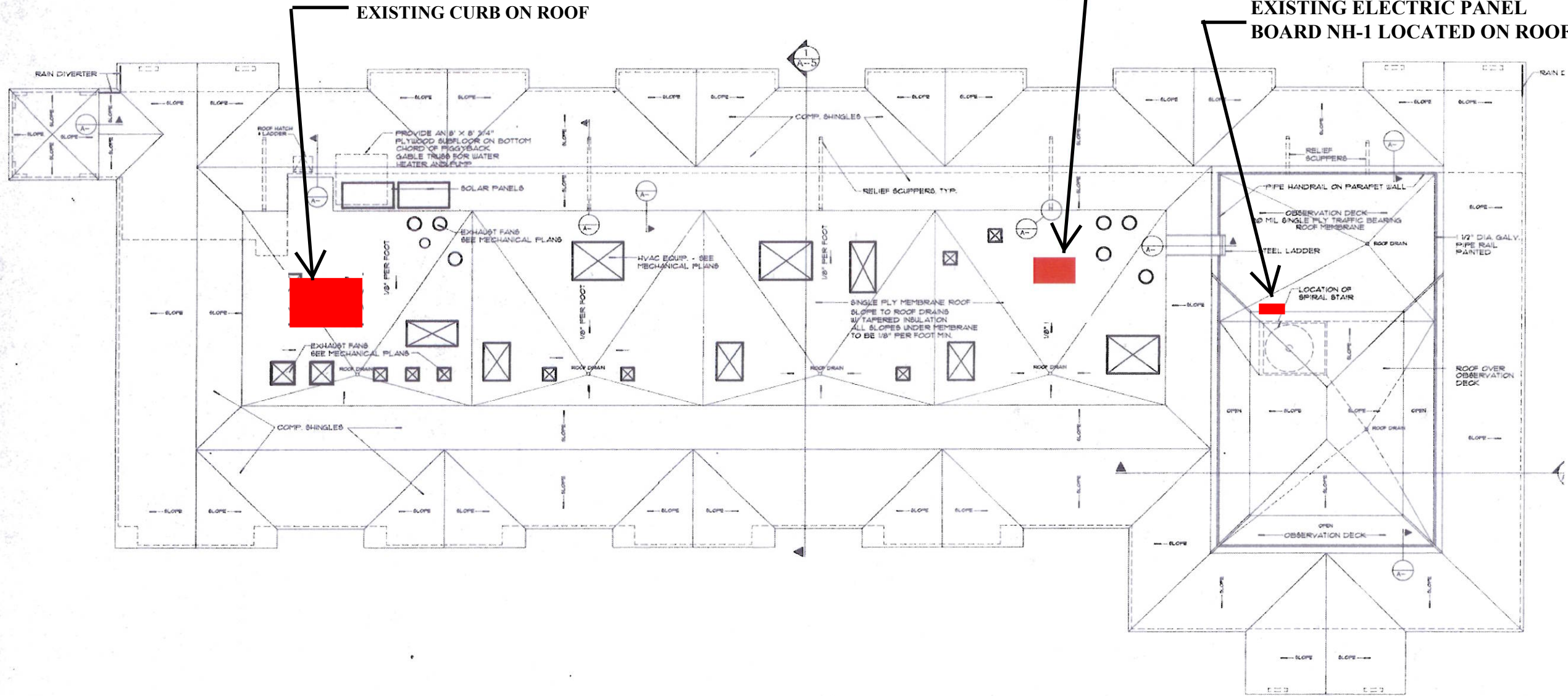


REBID USC Baruch Marine Lab HVAC Replacement & Repairs
Project Number: CP00428734

**NEW AC-1 LOCATED ON
EXISTING CURB ON ROOF**

**EXISTING AC-2 LOCATED
ON ROOF**

**EXISTING ELECTRIC PANEL
BOARD NH-1 LOCATED ON ROOF**

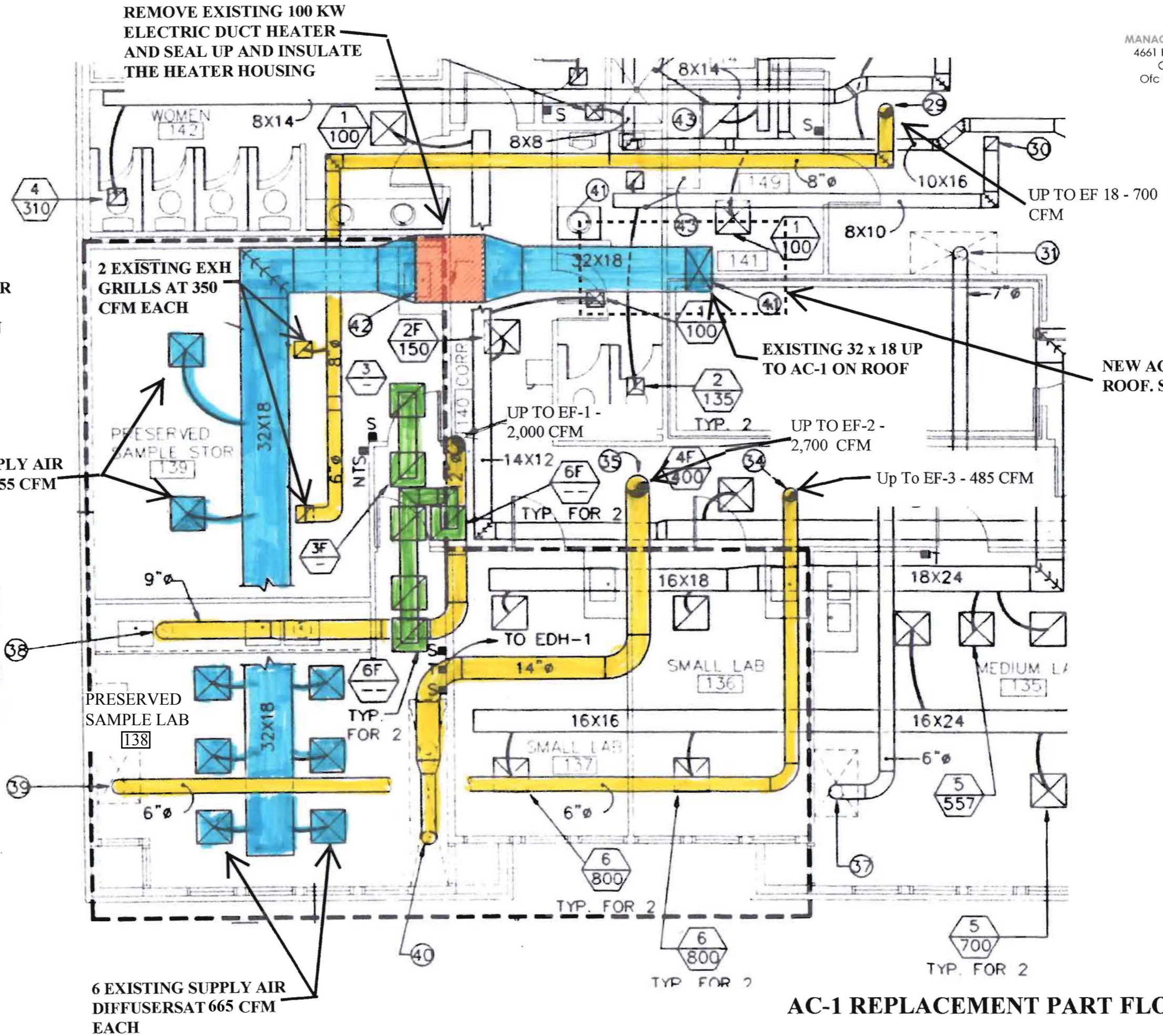


NOTE:
 REBALANCE SUPPLY AIR
 AND EXHAUST AIR
 QUANTITIES AS SHOWN

2 EXISTING SUPPLY AIR
 DIFFUSERS AT 255 CFM
 EACH

LEGEND:

- SUPPLY AIR DUCT
- RETURN AIR DUCT
- EXHAUST DUCT
- TRANSFER DUCT



AC-1 REPLACEMENT PART FLOOR PLAN M-1

AC UNIT SCHEDULE

Unit	CFM	Fan HP	Ext SP	MBH	Power
	SA - OA			EAT 95F/75F - LAT 55.9F/54.8F	
AC-1	4500 - 4500	5	.75"	170.6/119.6	480 Volt/3Phase

Basis of design is York Model JDMA 180 Packaged Roof Top Unit with variable speed supply air fan, hot gas reheat, and electric reheat. See Technical Specifications for additional approved unit suppliers.

EXISTING AC-1 LOCATED ON ROOF TO BE REMOVED AND REPLACED WITH NEW 100% OUTSIDE AIR UNIT

REBID USC Baruch Marine Lab HVAC Replacement & Repairs

EXISTING RETURN AIR DUCT TO BE REMOVED AND ROOF OPENING COVERED OVER AND ROOFED

32 X 18 SUPPLY AIR DUCT TO NEW AC-1. COORDINATE RISER LOCATION AND SIZE TO MATCH DISCHARGE CONNECTION ON NEW AC-1.

EXISTING RETURN AIR DUCTS TO BE REMOVED AND DUCT OPENINGS SEALED AND REINSULATED

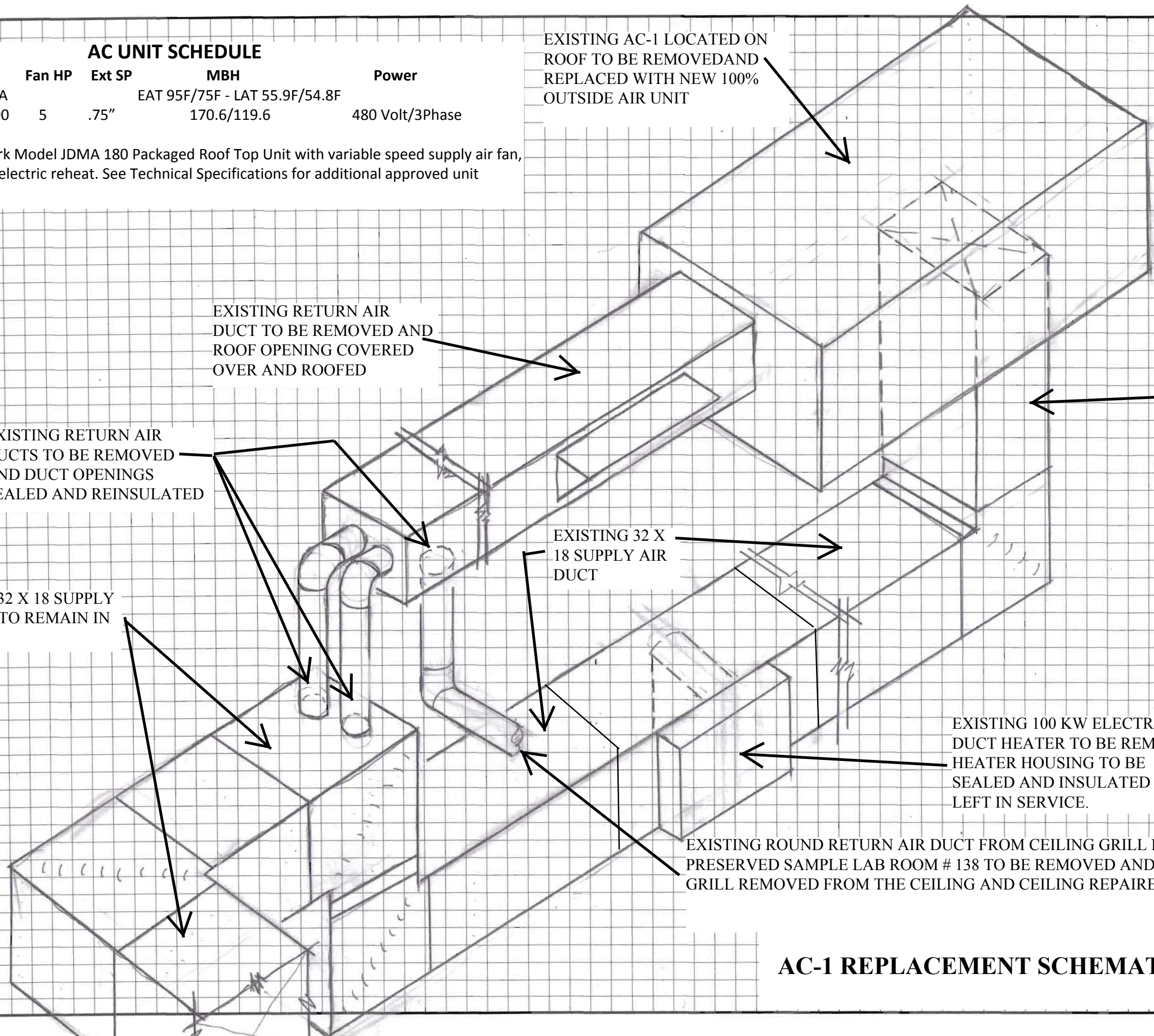
EXISTING 32 X 18 SUPPLY AIR DUCT

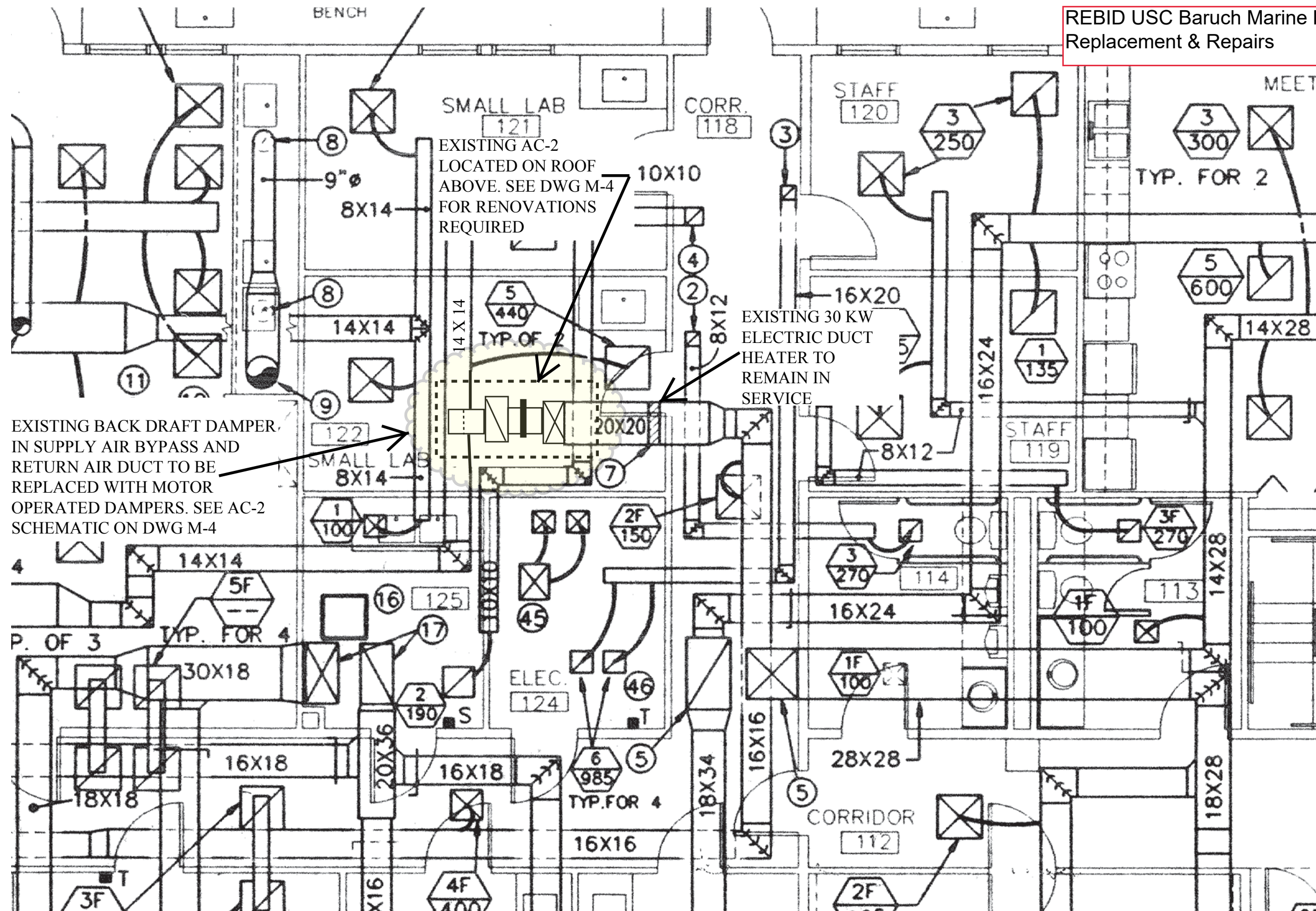
EXISTING 32 X 18 SUPPLY AIR DUCT TO REMAIN IN SERVICE

EXISTING 100 KW ELECTRIC DUCT HEATER TO BE REMOVED, HEATER HOUSING TO BE SEALED AND INSULATED AND LEFT IN SERVICE.

EXISTING ROUND RETURN AIR DUCT FROM CEILING GRILL IN PRESERVED SAMPLE LAB ROOM # 138 TO BE REMOVED AND GRILL REMOVED FROM THE CEILING AND CEILING REPAIRED

AC-1 REPLACEMENT SCHEMATIC DIAGRAM M-2

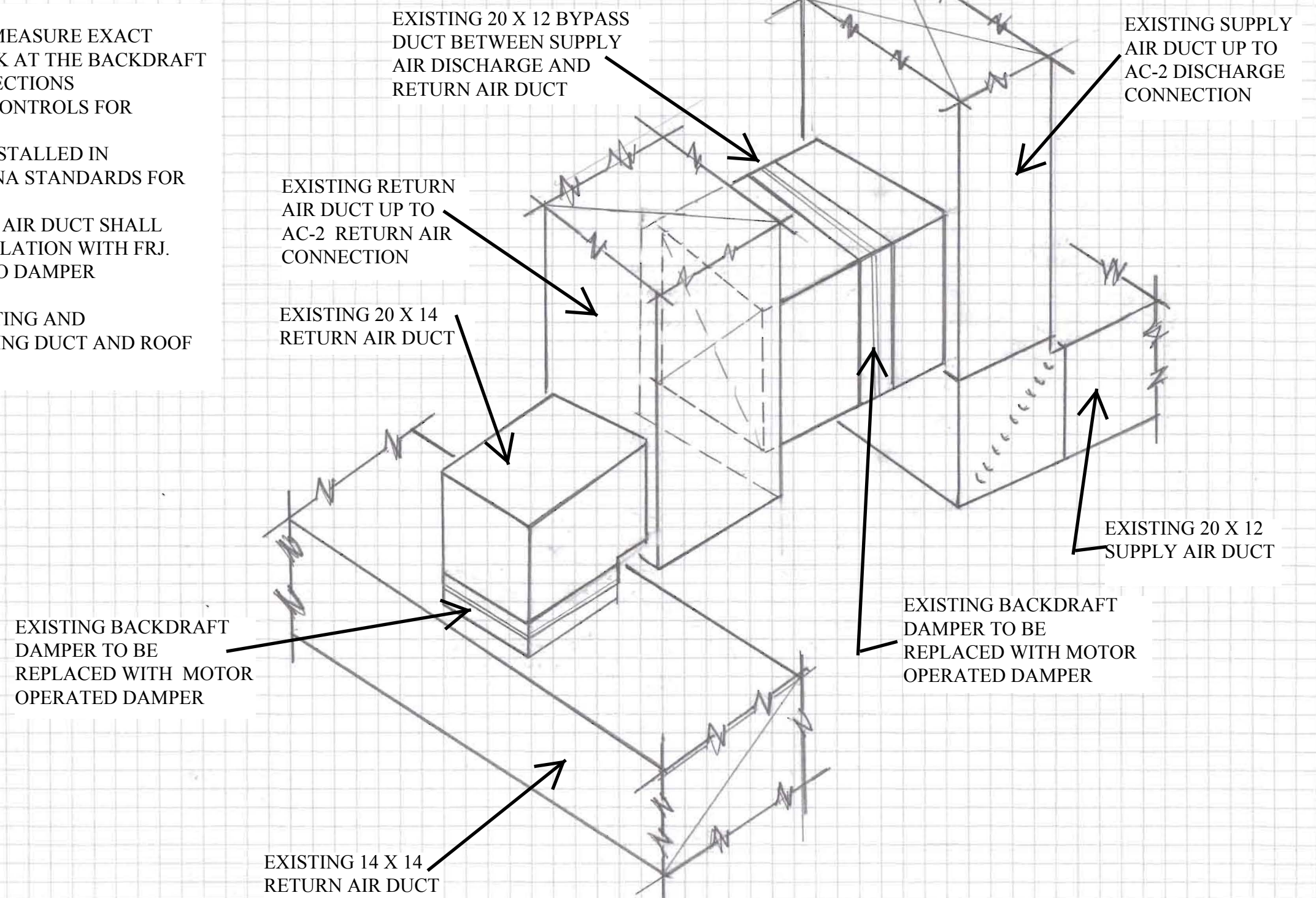




ALTERNATE # 2
AC-2 REWORK PART FLOOR PLAN M-3

NOTES

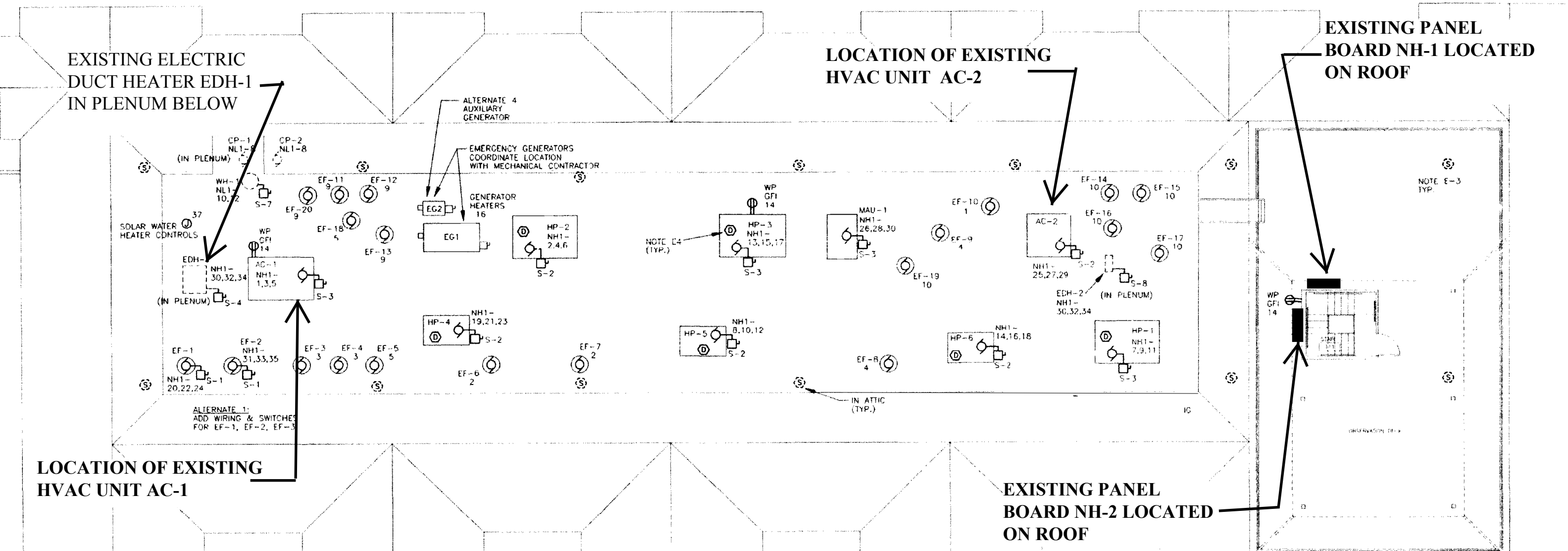
1. CONTRACTOR TO FIELD MEASURE EXACT DIMENSIONS OF DUCTWORK AT THE BACKDRAFT DAMPERS AND UNIT CONNECTIONS
2. SEE NEW SEQUENCE OF CONTROLS FOR ALTERNATE # 2.
3. DUCTWORK SHALL BE INSTALLED IN ACCORDANCE WITH SMACNA STANDARDS FOR MEDIUM PRESSURE DUCT.
4. SUPPLY AIR AND BYPASS AIR DUCT SHALL HAVE 1 1/2" FIBERGLAS INSULATION WITH FRJ.
5. PROVIDE TRANSITIONS TO DAMPER CONNECTIONS.
6. COORDINATE DUCT ROUTING AND CONNECTIONS WITH EXISTING DUCT AND ROOF FRAMING STRUCTURE



ALTERNATE # 2

AC-2 REWORK SCHEMATIC DIAGRAM M-4

REBID USC Baruch Maine Lab HVAC Replacement & Repairs



ROOF ELECTRICAL PLAN

SCALE: 1/8" = 1'-0"

3#8 - 1#10 GND - 1" C

277/480V, 3 PH., 3W, 60 HZ									
600 AMP M.L.O.									
SURFACE MOUNTED									
22,000 A.I.C. SYM. (MINIMUM)									
PANEL "NH1"									
NEMA 3R ENCLOSURE									
LOADS SERVED	BKR AMP	LOAD KVA	CKT. NO.	(S / N)	CKT. NO.	LOAD KVA	BKR AMP	LOADS SERVED	
AC-1	45	7.9	1	•	2	12.7	—		
	—	7.9	3	•	4	12.7	60	HP-2	
	—	7.9	5	•	6	12.7	—		
	—	14.7	7	•	8	7.6	—		
HP-1	70	14.7	9	•	10	7.6	40	HP-5	
	—	14.7	11	•	12	7.6	—		
	—	14.7	13	•	14	12.7	—		
HP-3	70	14.7	15	•	16	12.7	60	HP-6	
	—	14.7	17	•	18	12.7	—		
HP-4	40	7.6	19	•	20	0.5	20	EF-1	
	—	7.6	23	•	24	0.5	—		
	—	4.5	25	•	26	13.9	—		
AC-2	30	4.5	27	•	28	13.9	70	MAU-1	
	—	4.5	29	•	30	13.9	—		
EF-2	20	0.5	31	•	32	33.3	—		
	20	0.5	33	•	34	33.3	150	EDH-1	
	—	0.5	35	•	36	33.3	—		
SPACE	—	—	37	•	38	10.0	—		
SPACE	—	—	39	•	40	10.0	50	EDH-2	
SPACE	—	—	41	•	42	10.0	—		

3 - 1/0 - 1#6 GND - 2" C

EXISTING PANEL BOARD SCHEDULE NH-1

AC-1 REPLACEMENT ELECTRICAL PLAN E-1

REBID USC Baruch Marine
Lab HVAC Replacement &
Repairs

