



ADDENDUM NO.: ONE DATE: 22 June 2017

PROJECT TITLE: **Cabinets and Vanities Suite 207 –
Williams Brice Stadium 100 Level and Suite 207 Renovations**
University of South Carolina
Columbia, South Carolina

PROJECT NO.: H27-Z332-L WTS No. 1702

WRITTEN BY: Gene Bell, AIA, LEED-AP

TO: Prospective Bidders / Plan Holders

Addenda are issued prior to execution of Contract. All instructions contained herein shall be reflected in the Contract Sum and this Addendum will be made a part of the Contract Documents, if, as, and when a Construction Contract is awarded.

This Addendum forms a part of the Contract Documents and modifies the original documents dated 11 May 2017, as noted below. Acknowledge receipt of this Addendum in this space provided on the Bid Form. Failure to do so will subject the Bidder to disqualification.

This Addendum consists of 01 pages.

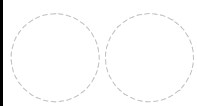
A. CHANGES TO THE DRAWINGS:

1. ADD ALTERNATE NO.2 AS FOLLOWS:
 - a. ALTERNATE NO.2: LEVEL 100 VANITIES – PROVIDE VANITIES SHOWN ON SHEET A6.05B IN DETAILS A1 AND A2, FOR WOMENS #16 AND MENS# 21. SEE ATTACHED DRAWINGS WITH ALTERNATE NO. 2 DETAILS.
2. CLARIFICATION FOR ALTERNATE NO. 1:
 - b. ALTERNATE NO. 1 CONSISTS OF BOTH VANITY 1 AND VANITY 2 FOR SUITE 207.

B. CHANGES TO THE BID DATE:

1. BIDS ARE NOW DUE ON THURSDAY, JUNE 29, 3:00PM. LOCATION FOR BID OPENING DID NOT CHANGE.

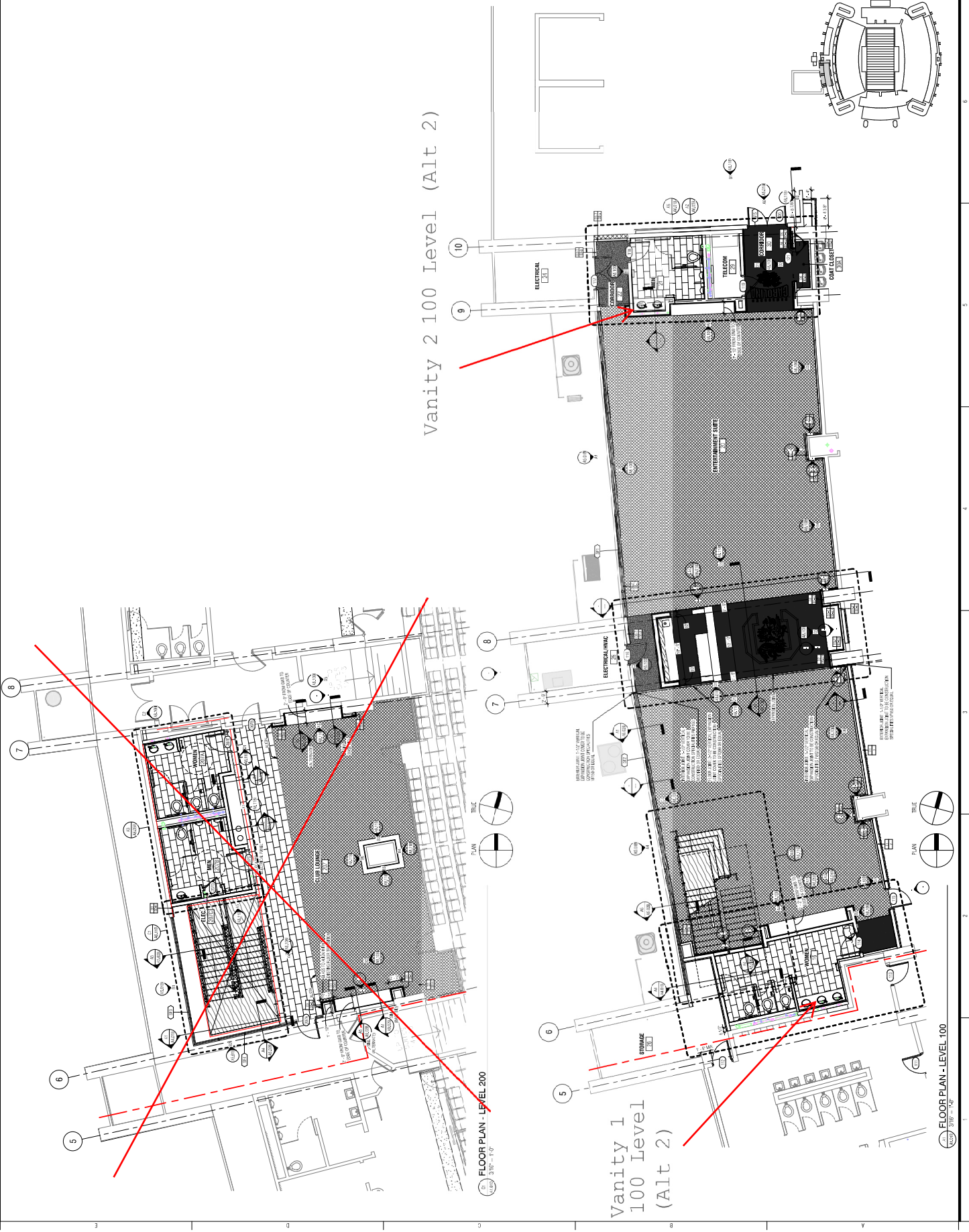
END OF ADDENDUM



ISSUE DATE	04/11/2017
PROJECT NAME	CONCRETE BUILDINGS
DATE	04/11/2017
BY	WTS
DATE	
BY	
DATE	
BY	
DATE	
BY	
DATE	
BY	
DATE	
BY	

FLOOR PLANS -
LEVELS 100 & 200

DATE PROJECT FILE: A1.01B
WTS PROJECT NO.:
SHEET



Vanity 2 100 Level (Alt 2)

Vanity 1
100 Level
(Alt 2)

FLOOR PLAN - LEVEL 200
3/16" = 1'-0"

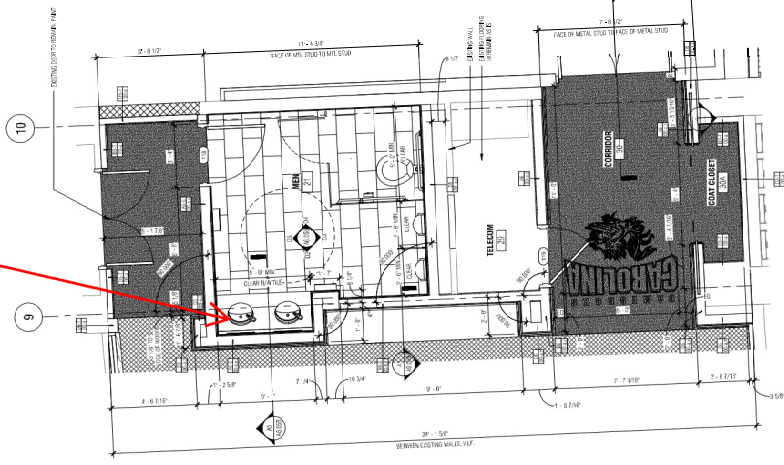
FLOOR PLAN - LEVEL 100
3/16" = 1'-0"

ISSUE DATE	MAY 11, 2017
CONTRACT NO.	CONTRACT NO. 100
DATE	DATE
REVISION	REVISION

ENLARGED FLOOR
PLANS

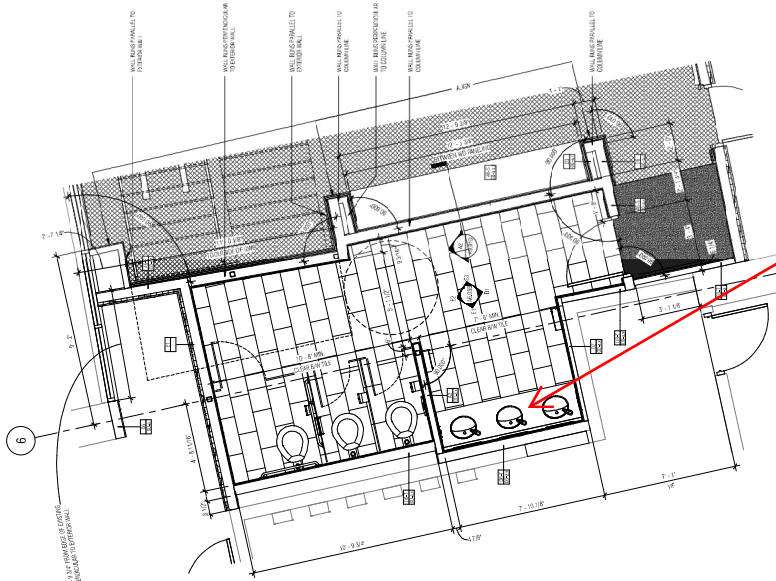
DATE PROJECT NO. A6.01B
1/17/17 WTS PROJECT NO. 100
WTS PROJECT NO. SHEET

Vanity 2
100 Level
(Alt 2)



NOTE: DIMENSIONS SHOWN FROM FACE OF METAL STUD UNLESS OTHERWISE NOTED

ENLARGED DIMENSION FLOOR PLAN
3/8" = 1'-0"



NOTE: DIMENSIONS SHOWN FROM FACE OF METAL STUD UNLESS OTHERWISE NOTED

ENLARGED DIMENSION FLOOR PLAN
3/8" = 1'-0"



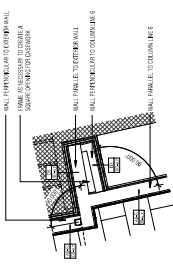
TERAZZO COLOR GUIDE

TERAZZO WHITE	TERAZZO BLACK	TERAZZO RED
---------------	---------------	-------------

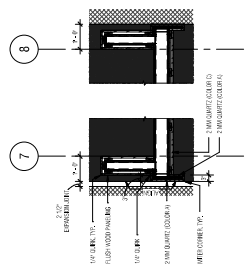


TERAZZO COLOR

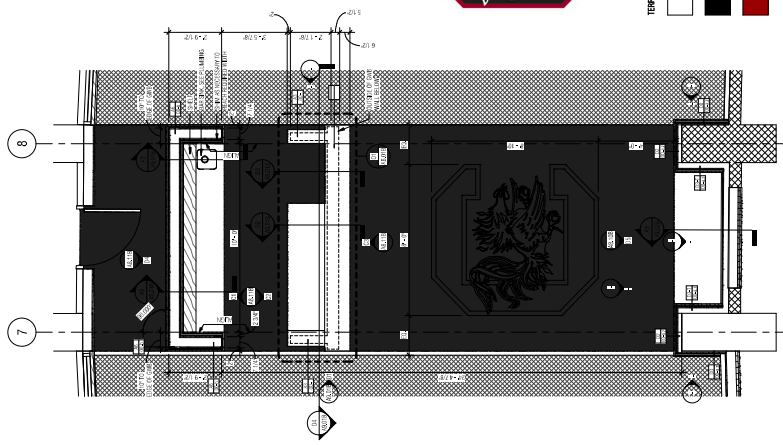
TERAZZO WHITE	TERAZZO BLACK	TERAZZO RED
---------------	---------------	-------------



PLAN DETAIL
3/8" = 1'-0"

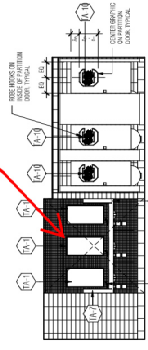


PLAN DETAIL
3/8" = 1'-0"

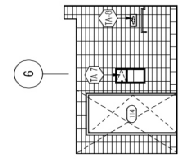


ENLARGED PLAN
3/8" = 1'-0"

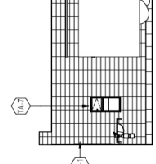
Vanity 1 100 Level (Alt 2)



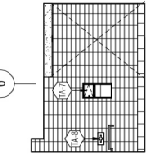
LEVEL 100 - WOMEN
100-100-100



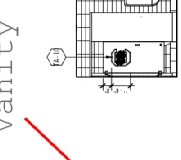
LEVEL 100 - WOMEN
100-100-100



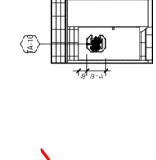
LEVEL 200 - MEN
100-100-100



LEVEL 100 - WOMEN
100-100-100



LEVEL 100 - MEN
100-100-100

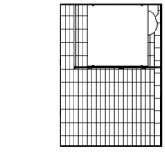


LEVEL 200 - MEN
100-100-100

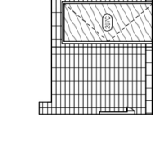
TOILET ACCESSORIES		
NO.	ITEM	QTY
11.1	GLASS VASOR WITH STAINLESS STEEL CHANNEL FRAME (TYPE 304)	1
11.2	1/2" X 1/2" X 1/2" STAINLESS STEEL VASOR (TYPE 304)	1
11.3	1/2" X 1/2" X 1/2" STAINLESS STEEL VASOR (TYPE 304)	1
11.4	1/2" X 1/2" X 1/2" STAINLESS STEEL VASOR (TYPE 304)	1
11.5	1/2" X 1/2" X 1/2" STAINLESS STEEL VASOR (TYPE 304)	1
11.6	1/2" X 1/2" X 1/2" STAINLESS STEEL VASOR (TYPE 304)	1
11.7	1/2" X 1/2" X 1/2" STAINLESS STEEL VASOR (TYPE 304)	1
11.8	1/2" X 1/2" X 1/2" STAINLESS STEEL VASOR (TYPE 304)	1
11.9	1/2" X 1/2" X 1/2" STAINLESS STEEL VASOR (TYPE 304)	1
11.10	1/2" X 1/2" X 1/2" STAINLESS STEEL VASOR (TYPE 304)	1
11.11	1/2" X 1/2" X 1/2" STAINLESS STEEL VASOR (TYPE 304)	1
11.12	1/2" X 1/2" X 1/2" STAINLESS STEEL VASOR (TYPE 304)	1

LEVEL 100 - WOMEN
100-100-100

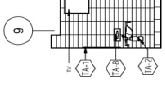
Vanity 2 100 Level (Alt 2)



LEVEL 100 - MEN
100-100-100



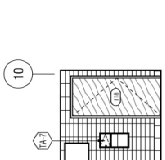
LEVEL 200 - MEN
100-100-100



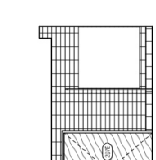
LEVEL 100 - MEN
100-100-100



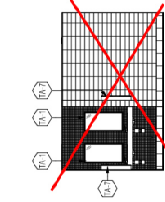
LEVEL 200 - WOMEN
100-100-100



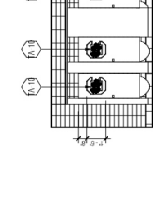
LEVEL 200 - WOMEN
100-100-100



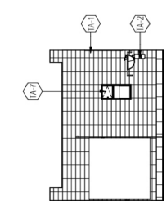
LEVEL 200 - WOMEN
100-100-100



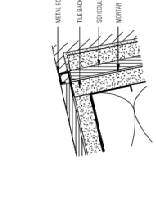
LEVEL 200 - WOMEN
100-100-100



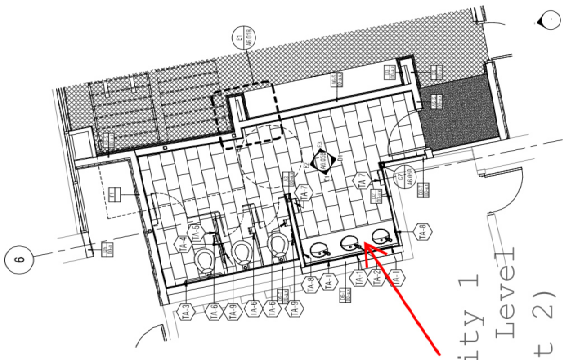
LEVEL 200 - WOMEN
100-100-100



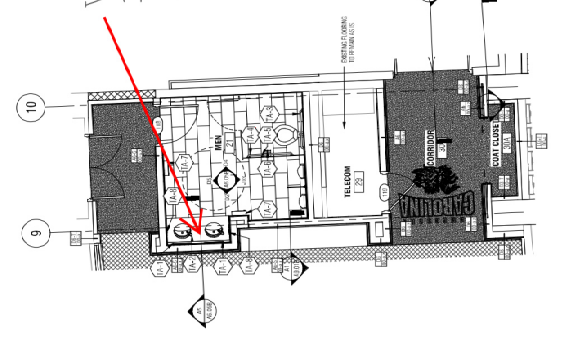
LEVEL 200 - WOMEN
100-100-100



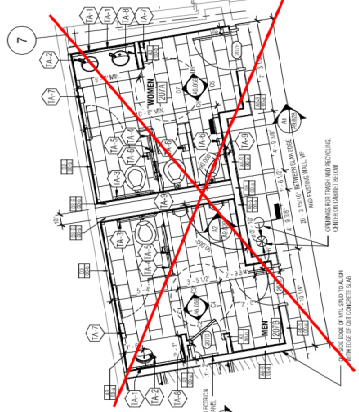
LEVEL 200 - WOMEN
100-100-100



Vanity 1
100 Level
(Alt 2)



Vanity 2
100 Level
(Alt 2)

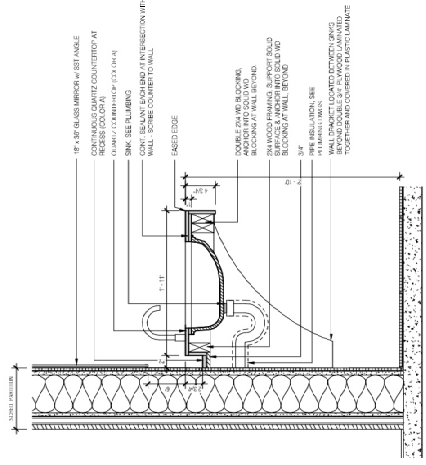


LEVEL 100 - WOMEN
100-100-100

LEVEL 100 - MEN
100-100-100

LEVEL 200 RESTROOMS
100-100-100

TYPICAL VANITY SECTION
100-100-100



TYP. DETAIL AT OUTSIDE CORNER
100-100-100



ISSUE DATE	NOV 11, 2017	
PROJECT	CONSTRUCTION DOCUMENTS	
#	DATE	REVISION

ENLARGED TOILET
PLANS &
ELEVATIONS

Vanities 1 and 2
100 Level (Alt 2)