



**U N I V E R S I T Y O F**  
**SOUTH CAROLINA**

**AMENDMENT NO. 3**

**TO: ALL VENDORS**

**FROM: William (Dennis) Gallman**

**SUBJECT: USC-RFQ-3140-DG/Furnish/Deliver and Install Alum Window Blinds and Solar shades**

**DATE: June 16, 2017**

---

This Amendment No. 3 modifies the RFQ only in the manner and to the extent as stated herein.

**ITEM ONE: CHANGE BID OPENING/CLOSING DATE:**

**FROM: June 20, 2017**

**TO: June 22 2017**

**ITEM TWO: DELETE THE ORIGINL BID SCHEDULE AND REPLACE WITH BID SCHEDULE REVISION 2017-06-16**

---

BIDDER SHALL ACKNOWLEDGE RECEIPT OF AMENDMENT NO. 3 IN THE SPACE PROVIDED BELOW AND RETURN IT **WITH THEIR BID RESPONSE**. FAILURE TO DO SO MAY SUBJECT BID TO REJECTION.

\_\_\_\_\_  
Authorized Signature

\_\_\_\_\_  
Firm

\_\_\_\_\_  
Date

## **Columbia Hall Window Treatment – Scope & Quantities**

### **Window Treatment Scope:**

Contractor to remove existing window treatment hardware, and furnish, deliver, and install window treatment for Columbia Hall, as follows, and per Specifications.

Contractor will be required to sign permit to work, after award and prior to installation, and abide by all university policies.

Contractor to remove all trash from building and campus. No campus dumpsters or recycling bins are to be used.

ALL MEASUREMENTS ARE APPROXIMATE, CONTRACTOR TO FIELD VERIFY ALL MEASUREMENTS, PRIOR TO ORDERING, FOR ACCURACY. The contractor who is awarded the bid will be allowed access to verify all measurements prior to placing order.

### **LOT 1: SOLAR SHADES**

#### **First Floor per Floor Plans (Lobbies, Classrooms, Computer lounge & Offices)**

1. 128.5" W x 120" L
  - Quantity: 12
2. 31" W x 120" L
  - Quantity: 6
3. 38.5" W x 120" L
  - Quantity: 4
4. 30.5" W x 120" L
  - Quantity: 2
5. 99" W x 120" L
  - Quantity: 1
6. 98.5" W x 120" L
  - Quantity: 2
7. 27" W x 120" L
  - Quantity: 2

**TOTAL FOR SOLAR SHADE FURNISH AND INSTALL \_\_\_\_\_**

**LOT 2: 1" HORIZONTAL BLINDS**

**First Floor per Floor Plans**

1. 35" W x 35.5" L (Classroom 109, interior windows, inside mount)
  - Quantity: 4
2. 30.5" W x 120" L (Custodial 110)
  - Quantity: 2

**Second – Eleventh Floor per Floor Plans**

3. 33" W x 56" L (student rooms)
  - Quantity (whole building): 200 (20 per floor)
4. 36" W x 56" L (common space & student rooms)
  - Quantity (whole building): 160 (16 per floor)

**Attic Stock**

5. Provide 10 for attic stock of each size window blind as follows: 33x56 and 36x56

**TOTAL FOR 1" WINDOW BLINDS FURNISH AND INSTALL \_\_\_\_\_**

**LOT 3: 2" FAUX WOOD BLINDS**

**First Floor per Floor Plans (RLC Apartment 108)**

1. 31" W x 120" L
  - Quantity: 2
2. 28.5" W x 83.5" L (inside mount)
  - Quantity: 2
3. 71" W x 83.5" L (inside mount)
  - Quantity: 1

**TOTAL FOR 2" FAUX WOOD BLINDS FURNISH AND INSTALL \_\_\_\_\_**

**Total (Lots 1,2 & 3) \$ \_\_\_\_\_**

SECTION 12490  
WINDOW TREATMENTS  
REVISION 1

PART 1 GENERAL

1.1 SECTION INCLUDES

- A. Window Coverings:
  - 1. Aluminum horizontal mini blinds. (Bali Classics 1 inch)
  - 2. Composite wood blinds. (Graber Traditions)

1.2 RELATED SECTIONS

- A. Section 06100 - Rough Carpentry; blocking.
- B. Section 09260 - Gypsum Board Assemblies; blocking.
- C. Section 09510 - Acoustical Ceilings.
- D. Section 09900 - Paints and Coatings.
- E. Division 16 - Electrical.

1.3 REFERENCES

- A. ASTM International (ASTM):
  - 1. ASTM E 21 - Standard Test Method for Elevated Temperature Tension Tests of Metallic Materials.
  - 2. ASTM E 22 - Recommended Practice for Conducting Long Time High Temperature Tension Test of Metallic Materials.
  - 3. ASTM G 21 - Standard Practice for Determining Resistance of Synthetic Polymeric Materials to Fungi.
  - 4. ASTM G 22 - Standard Practice for Determining Resistance of Plastics to Bacteria.
- B. National Fire Protection Association (NFPA):
  - 1. NFPA 70 - National Electrical Code.
  - 2. NFPA 701 - Fire Tests for Flame-Resistant Textiles and Films.
- C. Underwriters Laboratories Inc. (UL).

1.4 SUBMITTALS

- A. Submit under provisions of Section 01300.
- B. Product Data: Submit manufacturer's product data sheets, including installation details, styles, material descriptions, profiles, features, finishes and operating instructions.
  - 1. Preparation instructions and recommendations.
  - 2. Storage and handling requirements and recommendations.
  - 3. Mounting details and Installation methods.
  - 4. Typical wiring diagrams if applicable.
- C. Shop Drawings: Submit manufacturer's shop drawings, including plans, elevations, sections, product details and finishes, installation details, operational clearances, wiring diagrams if applicable, and relationship to adjacent work.

- D. Window Treatment Schedule: Submit a schedule with same room designations indicated on the Drawings; including but not limited to opening sizes and key to typical mounting details.
- E. Maintenance Data: Submit instructions and precautions for cleaning and maintenance, operating hardware and controls as applicable.
- F. Selection Samples:
  - 1. Frame and Component Finishes: Submit 2 sets of samples, representing manufacturer's standard range of finishes specified for aluminum.
  - 2. Fabric: Submit 2 sets of samples, representing manufacturer's standard range of options for shade cloth.
  - 3. Aluminum Slats: Submit 2 sets of samples, 6 inches long, representing manufacturer's standard range of finishes specified for aluminum slats.
- G. Verification Samples:
  - 1. Frame and Component Finishes: Submit 2 samples, representing actual finishes specified for aluminum.
  - 2. Fabric: Submit 2 samples, representing actual products specified for shade cloth.
  - 3. Aluminum Slats: Submit 2 sets of samples, 6 inches long, representing actual finishes specified for aluminum slats.

#### 1.5 QUALITY ASSURANCE

- A. Manufacturer's Qualifications: Engaged in manufacturing of products of similar type to that specified, with a minimum of 10 years successful experience.
- B. Installer Qualifications: Minimum 2 years successful experience installing similar products.
- C. Single Source Requirements: To the greatest extent possible, provide products specified in this section from a single manufacturer.

#### 1.6 DELIVERY, STORAGE, AND HANDLING

- A. Delivery: Deliver materials to site protected from damage.
- B. Storage: Store materials in clean, dry area indoors in manufacturer's unopened packaging until ready for installation and in accordance with manufacturer's instructions. Store in a clean, dry area, laid flat to prevent sagging and twisting of packaging.
- C. Handling: Protect materials and finish from damage during handling and installation.

#### 1.7 PROJECT CONDITIONS, COORDINATION AND SEQUENCING

- A. Maintain environmental conditions (temperature, humidity, and ventilation) within limits recommended by manufacturer for optimum results. Do not install products under environmental conditions outside manufacturer's recommended limits.
  - 1. Building shall be enclosed; windows, frames and sills shall be installed and glazed.
  - 2. Wet work shall be complete and dry.
  - 3. Ceilings, window pockets, electrical and mechanical work above window covering shall be complete.
- B. Conference: Convene a pre-installation conference to establish procedures to maintain optimum working conditions and to coordinate this work with related and adjacent work.
- C. At pre-installation conference, Contractor must sign University Permit to Work, acknowledging scope of work, and limitations due to hazmat regulations.

## 1.8 TYPE OF WARRANTY

- A. Warranty:
  - 1. Provide Limited lifetime warranty on all Bali®, Graber® and SWFcontract™ products sold by SWF or by an authorized dealer, other than the products listed below, which have the limited warranty periods as indicated:
  - 2. Exterior solar shade products: Five years
  - 3. Wood and faux wood slats (including composites): Five years

## 1.9 EXTRA MATERIALS

- A. Attic Stock: Provide 10 extra blinds of two primary sizes used for Owner's replacement stock, for a total of 20 attic stock blinds.

## PART 2 PRODUCTS

### 2.1 MANUFACTURERS

- A. Acceptable Manufacturer: SWFcontract, which is located at: 7549 Graber Rd.; Middleton, WI 53562-1096 ; Toll Free Tel: 800-327-9798; Email:[requestinfo@architectsolutions@swfcontract.com](mailto:requestinfo@architectsolutions@swfcontract.com); Web:[www.swfcontract.com](http://www.swfcontract.com)
- B. Requests for substitutions will be considered only prior to the questions deadline during the bid process. **NO substitutions will be accepted after the questions deadline.**

### 2.2 MANUALLY OPERATED SHADING SYSTEMS

- A. Shading Systems: SWFcontract Manual Solar Shades as manufactured by SWFcontract.
- B. Fabric: Flame retardant, fade and stain resistant, anti-microbial.
  - 1. Style: Double-Take T300, 3% Openness.
  - 2. Color Name: Charcoal/Bronze.
  - 3. Color Number: U307.
- C. Components: Fabricate such that shade hangs flat without buckling or distortion.
  - 1. TruePerformance Clutch Systems:
    - a. Clutch System: TruePerformance Clutch System from SWFcontract consisting of fiberglass filled nylon for wear resistance, smooth operation and corrosion resistance. The clutch is comprised Velvetrol internal spring arrangement for a smooth pulling force that locks the shade in any position when operating the control loop. The clutch mechanism is bi-directional and does not require adjustment or lubrication. Clutch to be factory installed in roller tube at manufacturing. Clutch size to be selected by manufacturer based on fabric selection and shade size.
  - 2. Control Loops: Bead stops attached to the chain protect shade from over rotation.
    - a. Materials: Standard, No. 10 stainless steel bead chain.
  - 3. Roller Tubes: Extruded-aluminum tubes engineered with a chamfered channel to accept fabric spline and allow fabric to lay across the tube without adding crease lines. The diameter and wall thickness to be determined by manufacturer based on fabric selection and shade size to provide minimal deflection and optimal performance.
  - 4. Idler Ends: high strength, fiberglass-filled nylon with spring-loaded pin-end technology
  - 5. Lift Assist Systems: Heavy-duty torsion spring located inside the roller tube. The mechanism reduces the pull force allowing easy lifting of larger shades.
  - 6. Spline Systems: Consist of PVC spline heat-welded to the shade fabric and inserted into a channel on the roller tube. Tape and other methods of attachment are not acceptable.

7. Hem Bars: Provide optional fabric wrapped hem bar, to coordinate with shade cloth selection.

D. Accessories:

1. Fascia Panels: None.

## 2.3 HORIZONTAL BLINDS

A. Window Coverings: Bali Classics 1 inch Aluminum Horizontal Mini Blinds as manufactured by SWFcontract.

1. Slats:
  - a. Materials: 5000 series cold-rolled aluminum.
  - b. Nominal Width: 1 inch (25 mm).
  - c. Finish: Polyester baked enamel, with Advanced Finishing Technology (AFT) which delivers anti-static performance to repel dust.
  - d. UL Greenguard Gold certified
  - e. Type: Solid .008 inch (0.20 mm) thick.
  - f. Slat Color Name: Snowcap White.
  - g. Slat Color Number: 386.
2. Braided Ladders: 100 percent polyester yarn incorporating two extra strength rungs per ladder for slat support.
  - a. Ladder Spacing: 21.5 mm (14.17 slats per foot), standard.
3. Components:
  - a. Headrail:
    - 1) Size: 1 inches (25 mm) high x 1-1/2 inches (38 mm) wide x .025 inch (0.64 mm) thick.
    - 2) Description: U-shaped steel.
    - 3) Finish: Includes phosphate treatment, a chrome-free sealer, a low HAP urethane primer and a topcoat with low HAP polyester baked enamel.
  - b. Tilters: Injection-molded thermoplastics, incorporates clutch mechanism to prevent damage due to over tilting.
  - c. Tilt Rods: Electro-zinc coated solid steel measuring 1/4 inch (13 mm) square.
  - d. Tilt Wands: Clear polycarbonate with hexagonal cross section measuring approximately 1/4 inch diameter, attached to tilter shaft by means of spring clip.
  - e. Cord Locks: Metal, snap-in design with floating, shaft-type locking pin and crash proof safety feature that locks blind automatically upon release of cord.
    - 1) Operation: Standard.
  - f. Drum and Cradles: Low-friction thermoplastic, provided for each ladder.
  - g. Brackets: Standard, box style.
  - h. Bottomrails: Enclosed tubular shape.
    - 1) Materials: Phosphate-treated steel, finished with a chrome-free sealer.
    - 2) Finish: Low HAP urethane primer and a topcoat of low HAP polyester baked enamel, .025 inch (0.64 mm) thick.
    - 3) Turn Clips: For extruded pocket.

## 2.4 FAUX WOOD BLINDS

A. Window Coverings: Graber Traditions Composite Wood Blinds as manufactured by SWFcontract.

1. Description: Alternative wood slats, PVC-free, resist moisture and warping; with the look of natural wood grain
2. Slats:
  - a. Description: PVC polymers 2 inches (51 mm) wide x 1/8 inch (3.2 mm) thick with straight cut edges.
  - b. Slat Type: Standard.
    - 1) Ladders: Braided ladders, 100 percent polyester incorporating two extra strength rungs per ladder to support slats.

- c. Nominal Slat Width: 2 inches.
  - d. Thickness: 1/8 inch (3.2 mm).
  - e. Materials: Lineal grained and smooth sanded 100 percent North American basswood, kilned dried to 6 - 10 percent moisture content to reduce warping.
  - f. Slat Color Name: Arctic White.
  - g. Slat Color Number: 2539.
3. Components:
- a. Headrails: SureClose Headrail.
    - 1) Size: 1-5/8 inch (41 mm) high x 2-1/4 inch (57 mm) wide x .022 inch (0.56 mm) thick.
    - 2) Description: U-shaped steel with 1/8 inch (3.2 mm) light blocking lip on the bottom centerline.
    - 3) Finishing: Phosphate treatment, chrome-free sealer, low HAP urethane primer and topcoat with low HAP polyester baked enamel.
  - b. Motors: Tilt wirefree motor. Provides tilt control of 2" horizontal blinds.
    - 1) Description: Capable of precision tilting of blind slats
    - 2) Motor type: Low voltage wired.
    - 3) Motors: concealed inside headrail
    - 4) Motor size: To be determined by blind manufacturer to insure proper operation based on window size up to 7,200 square feet.
    - 5) Speed: 5 rpms
  - c. Ladder Spacing: 44 mm.
  - d. Operation: Tilters, cord tilter, snap-in, low-friction thermoplastic worm and pulley design, nylon gear housing; secured to pulley and treated with wood tassels at tilt end.
  - e. Cord Locks: Snap-in design incorporating a stainless steel wear guard over which cords pass. A floating, shaft-locking pin will lock blind at any position and shall be crash proof.
  - f. End of Lift Cords: Treated with wooden tassels.
  - g. Bottomrails: Trapezoid shape.
    - 1) Size: 7/8 inch (22 mm) high x 2 inch (51 mm) wide.
    - 2) Materials: Wood.
    - 3) Finish: To coordinate with slats.

## PART 3 EXECUTION

### 3.1 PREPARATION

- A. Inspect mounting surfaces, blocking for shade brackets or pocket assemblies, suspended acoustical or gypsum ceiling for recessed shades and verify field measurements. Prepare substrates using the methods recommended by the manufacturer for achieving the best result for the substrate under the project conditions.
- B. Remove all existing hardware and screws.
- C. Do not proceed with installation until substrates have been prepared using the methods recommended by the manufacturer and deviations from manufacturer's recommended tolerances are corrected. Commencement of installation constitutes acceptance of conditions.
- D. If preparation is the responsibility of another installer, notify Housing Interior Designer in writing of deviations from manufacturer's recommended installation tolerances and conditions.

### 3.2 INSTALLATION

- A. Install window treatments in accordance with manufacturer's instructions including the



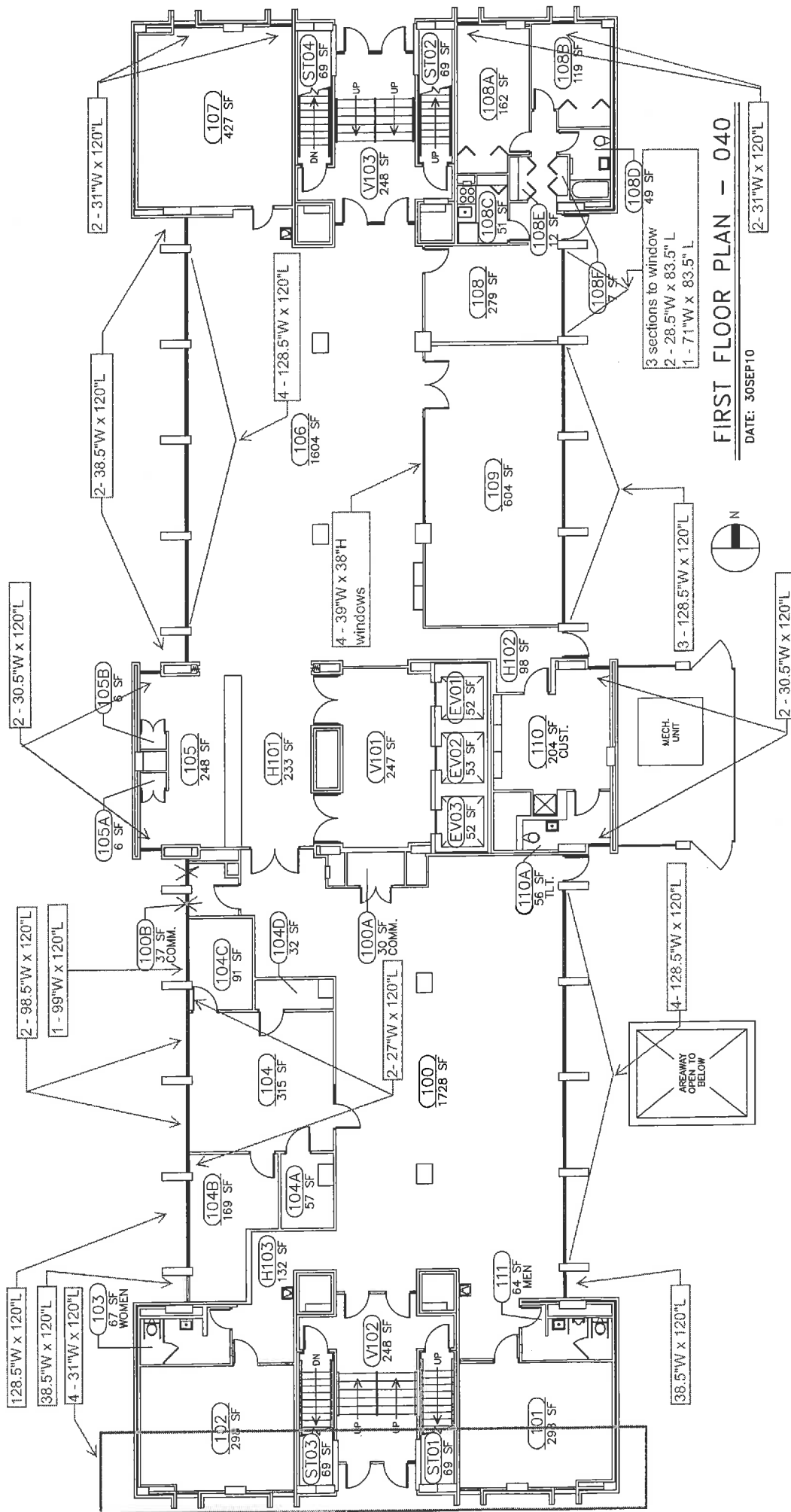
following.

1. Install with adequate clearance to permit smooth operation of the shades throughout entire operational range.
2. Adjust and balance window coverings to operate smoothly, easily, safely, and free from binding or malfunction throughout entire operational range.

### 3.3 CLEANING AND PROTECTION

- A. Clean surfaces after installation in accordance with manufacturer's written instructions. Do not use cleaning methods involving heat, bleach, abrasives, or solvents.
- B. Protect installed products until completion of project. Repair damaged or improperly installed before Substantial Completion.

END OF SECTION



# FIRST FLOOR PLAN - 040

DATE: 30SEP10

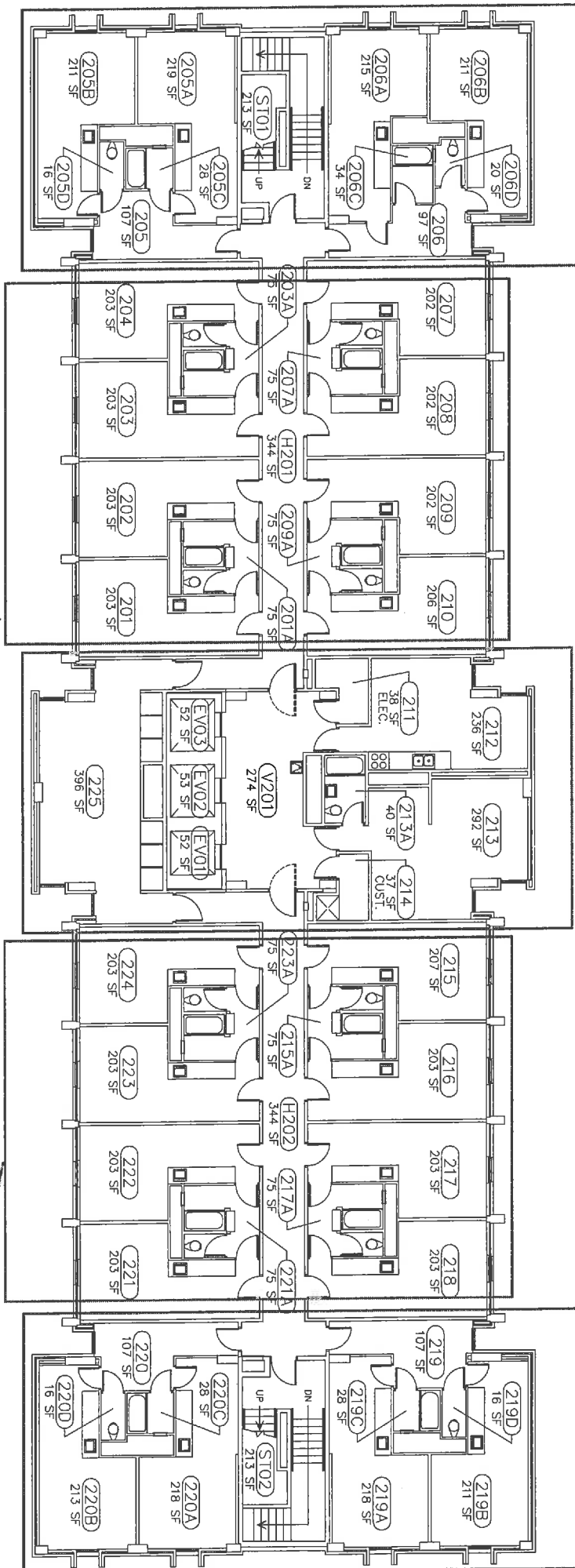
Revision 1

Windows in these three sections are 33"W x 56"H

A diagram of a circle with a vertical line segment passing through its center. The line segment is labeled 'Z' below it.

Windows in these two sections are 36"W x 56"H

Note: Measurements are approximate.  
Contractor responsible for field verifying  
measurements and accuracy of material sizes.



FM00532957

\*FM00532957\*

## USC Work Order

Description COLUMBIA HALL HAZMAT SURVEY

Site	COLUMBIA	Assigned To	JPROVENCE
Building	040 COLUMBIA HALL	Crew	HAZMAT
Floor	Room:	Start Date	01-NOV-16
Equipment		Due date	21-NOV-16
		Request Date	01-NOV-16
		Priority	3
		by	EHNEY

Request # SR00465542 Description COLUMBIA HALL HAZMAT SURVEY

Parent WO #

CP Number

State/Internal Project Number

Requestor	SHERRY,JIM	Project Manager	
Telephone	7-5719	Telephone	
Alternate		Estimated Cost	\$ 0.00
Telephone		Billing	CHARGEBACK-EXT
Non-Available Time		50010-A110-52043	(SAFETY & HAZMAT SERVICES)

Task List

ATTACHED

DATE WORK STARTED	CAUSE
DATE WORK COMPLETED	CONDITION
EQUIPMENT	
CLOSING REMARKS	
BENCHSTOCK MATERIALS	
Qty	Description
	Price Per Unit

Supervisor's Approval

Note Date	Title
02-NOV-16	HAZMAT SURVEY RESULTS
SURVEY DATE: 11/2/16	
INSPECTOR #: DARRYL WASHINGTON II (BI-00568)	
STATUS: SCOPE OF WORK CONSISTS OF A COMPREHENSIVE PAINTING PROJECT ,RUBBER BASES WILL BE REMOVED, WALLS WILL BE SANDED, OPENED AREAS WILL BE PATCHED AND PAINTED; THE FIRST FLOOR WALL COVERING WILL BE REMOVED; THE CEILING, WALLS, AND TRIM WILL BE PAINTED THROUGHOUT THE BUILDING. NO SAMPLES COLLECTED DUE TO PREVIOUS SURVEY DATA AVAILABLE TO COVER THIS PROJECT.	
ASBESTOS SECTION:	
JOINT COMPOUND / SHEETROCK- POSITIVE FOR ASBESTOS	
ALL VINYL BASE AND GLUE- DEEMED POSITIVE DUE TO BEING ATTACHED TO THE ASBESTOS JOINT COMPOUND/ SHEETROCK WALLS	
TEXTURED CEILING MATERIAL (HALLS AND ROOMS) - NEGATIVE FOR ASBESTOS	
TEXTURED CEILING MATERIAL (NORTH AND SOUTH EXITS OF THE BUILDING) - NEGATIVE FOR ASBESTOS	
NEWER TEXTURED CEILING MATERIAL (NORTH AND SOUTH EXITS OF THE BUILDING)-NEGATIVE FOR ASBESTOS	
2X2 CEILING TILES- NEGATIVE FOR ASBESTOS	

## LEAD SECTION:

WHITE WALL PAINT- NEGATIVE FOR LEAD  
TAN DOORFRAME PAINT- NEGATIVE FOR LEAD

## INSPECTOR'S NOTES:

- FOR PREVIOUS SURVEY, DATA FOR CEILING TEXTURE NEW AND OLD ON THE NORTH AND SOUTH EXIT CEILINGS PLEASE REFERENCE WORK ORDER FM00498061 PERFORMED ON 9/16/15.
- FOR PREVIOUS SURVEY, DATA FOR THE CEILING TEXTURE THROUGHOUT THE BUILDING PLEASE REFERENCE WORK ORDER FM00472644 PERFORMED ON 11/14/14.
- IF ANY JOINT COMPOUND/SHEETROCK HAS TO BE DISTURBED AS PART OF THIS PROJECT PLEASE CONTACT USC HAZMAT CREW OR AN ASBESTOS CONTRACTOR FOR ASSISTANCE WITH REMOVAL.
- IF ANY VINYL BASE AND GLUE HAS TO BE DISTURBED AS PART OF THIS PROJECT, PLEASE CONTACT USC HAZMAT CREW OR AN ASBESTOS CONTRACTOR FOR ASSISTANCE.
- THE WALLPAPER ON THE FIRST FLOOR MAY OR MAY NOT HAVE TO BE REMOVED BY USC HAZMAT CREW OR AN ASBESTOS CONTRACTOR DUE TO THE ASBESTOS JOINT COMPOUND AND HOW IT WAS APPLIED ON WALLS.
- THE CEILING TEXTURE MAY OR MAY NOT BE APPLIED OVER SHEETROCK WITH ASBESTOS JOINT COMPOUND. IF ANY ALTERATIONS OF THE CEILINGS HAVE TO BE PERFORMED, PLEASE CONTACT USC HAZMAT CREW OR AN ASBESTOS ABATEMENT CONTRACTOR.

IF YOU ENCOUNTER ANY OTHER MATERIALS IN PLACE AND DEEM THEM SUSPECT FOR ASBESTOS AND/OR LEAD, PLEASE STOP WORK AND CONTACT THE ASBESTOS PROGRAM MANAGER FOR FURTHER TESTING OR ABATEMENT.

REFER TO THE SURVEY RESULTS ATTACHED TO THE WORK ORDER FOR DETAILED INFORMATION.

**09-SEP-16 ASBESTOS SUMMARY FOR COLUMBIA HALL (040) – SEPTEMBER 2016**

ASBESTOS HAS BEEN FOUND IN THIS BUILDING. IF DISTURBED, ASBESTOS MAY BE HARMFUL TO YOUR HEALTH.

PLEASE DO NOT DISTURB THE FOLLOWING MATERIALS IN THIS BUILDING AS THEY HAVE BEEN FOUND TO CONTAIN ASBESTOS.

- JOINT COMPOUND / SHEETROCK
- TEXTURED CEILING MATERIAL

IF A BUILDING MATERIAL IS NOT LISTED, DO NOT ASSUME THAT IT DOES NOT CONTAIN ASBESTOS. IT MAY NOT HAVE BEEN TESTED.

FOR FURTHER INFORMATION, PLEASE CONTACT THE USC HAZMAT PROGRAM.