



UNIVERSITY OF
SOUTH CAROLINA

AMENDMENT TO SOLICITATION

Amendment No. 2

DATE: May 14, 2017
TO: ALL VENDORS
FROM: Leann Cudd, Procurement Specialist
SOLICITATION: USC-IFB-3144-LC
DESCRIPTION: Furnish, Deliver, & Install Wood Wall Panels

Amendment No. 2 modifies this Invitation for Bids only in the manner and to the extent as stated herein.

Attachment & Drawings

Please see pages 2 through 14 for additional drawings

Bidder shall acknowledge receipt of Amendment No. 2 in the space provided below and return it with their bid response. Failure to do so may delay award of contract.

Authorized Signature

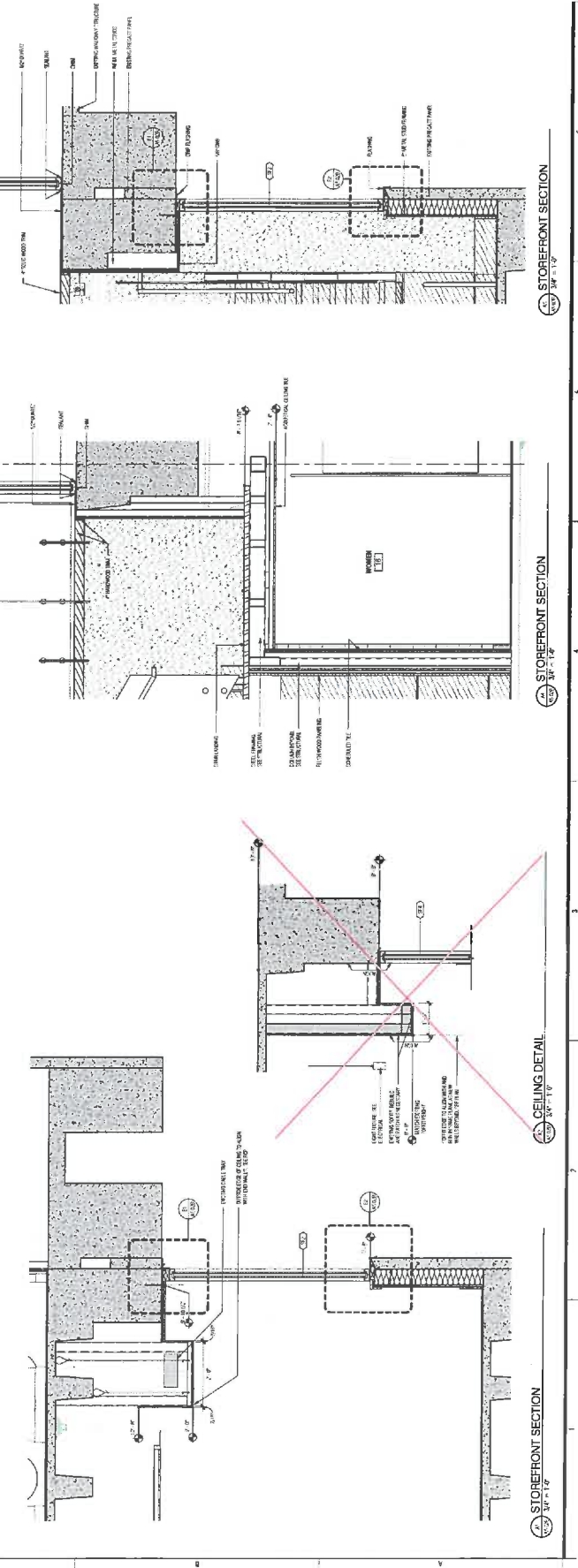
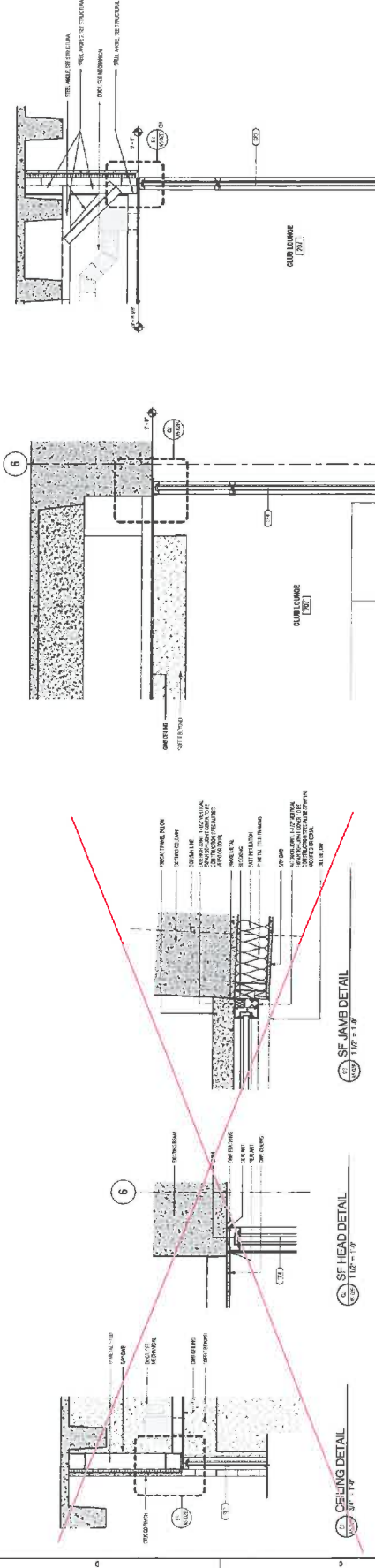
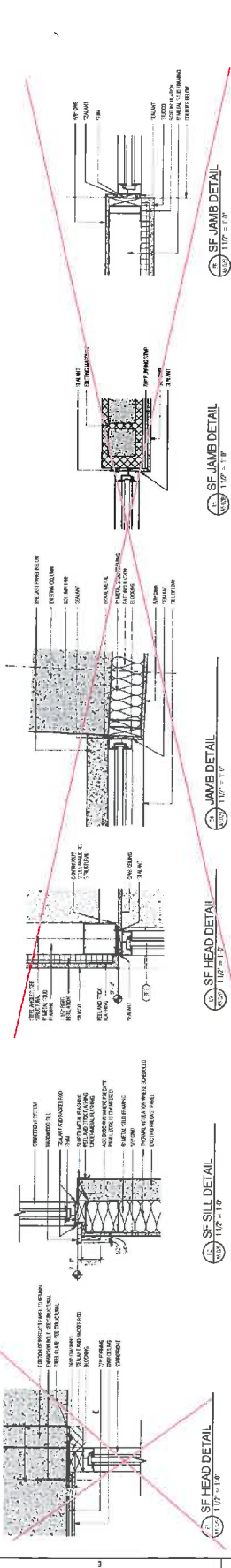
Name of Offeror

Date



SCALE	DATE	DESCRIPTION
AS SHOWN	08/11/2017	CONSTRUCTION DETAILS
AS SHOWN	08/11/2017	REVISION

STOREFRONT SECTIONS & DETAILS



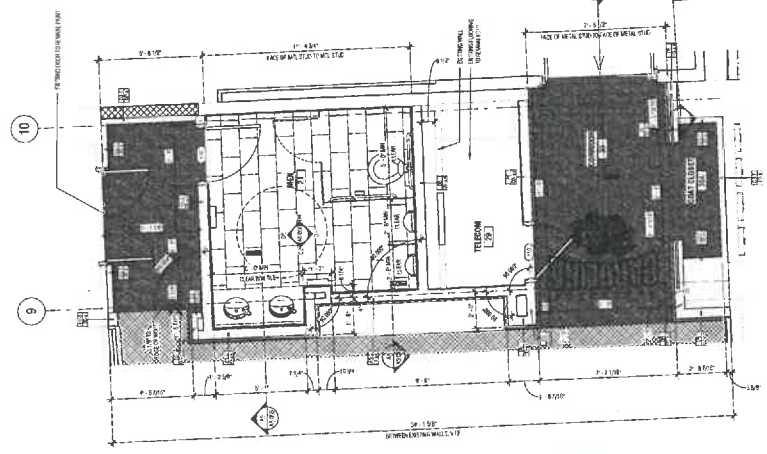


WILLIAMS-BRICE STADIUM 100 LEVEL AND
SUITE 207 RENOVATIONS

NO.	DATE	REVISION
1	08/11/2017	CONSTRUCTION PACKAGES
2		
3		
4		
5		
6		
7		
8		
9		
10		

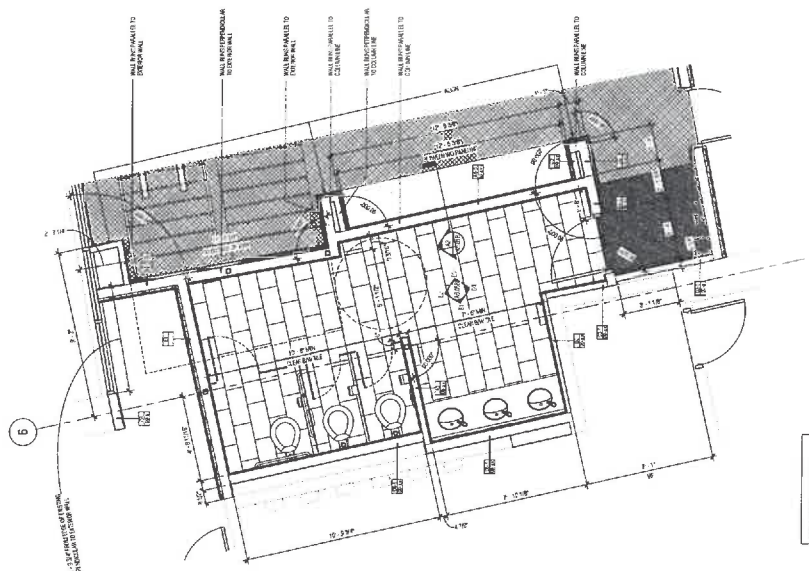
ENLARGED FLOOR
PLANS

PROJECT NO. A6.01B
DATE 08/11/2017
WTS PROJECT NO. 100



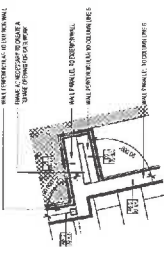
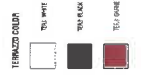
SEE DIMENSIONAL PLAN FOR
DIMENSIONS AND FINISHES

ENLARGED DIMENSION FLOOR PLAN
SCALE: 3/8" = 1'-0"

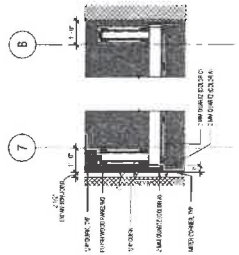


SEE DIMENSIONAL PLAN FOR
DIMENSIONS AND FINISHES

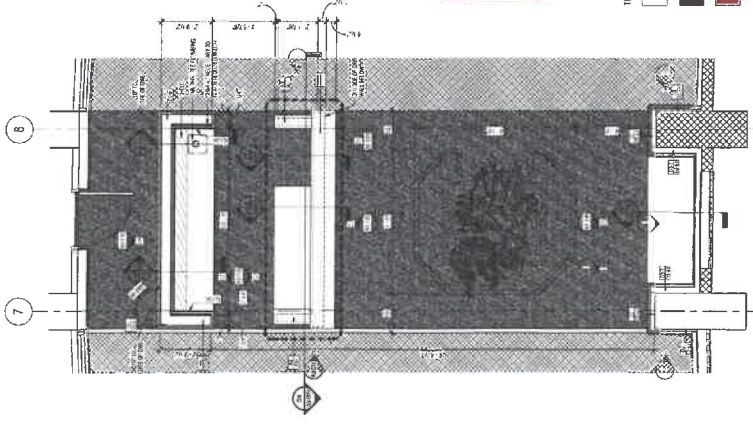
ENLARGED DIMENSION FLOOR PLAN
SCALE: 3/8" = 1'-0"



PLAN DETAIL
SCALE: 1/2" = 1'-0"



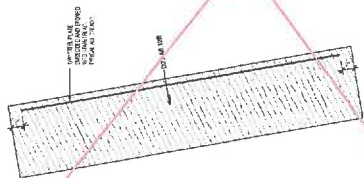
PLAN DETAIL
SCALE: 1/2" = 1'-0"



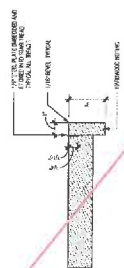
ENLARGED PLAN
SCALE: 3/8" = 1'-0"



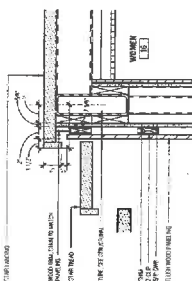
DATE	NOV 11, 2017
PHASE	CONSTRUCTION DOCUMENTS
#	DATE
	REVISION



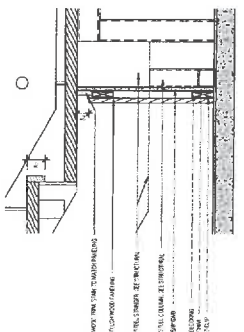
TREAD DETAIL
1/4" = 1'-0"



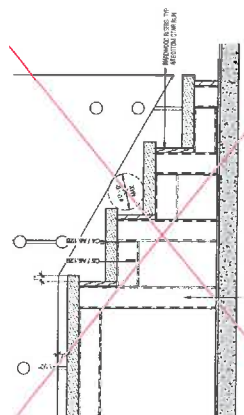
TREAD DETAIL
1/4" = 1'-0"



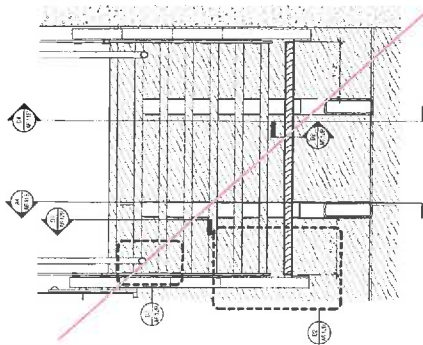
DETAIL AT LANDING
1/4" = 1'-0"



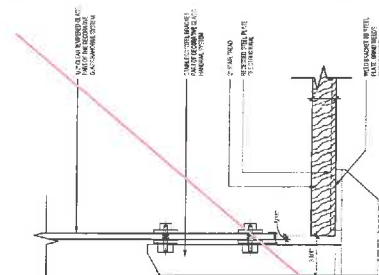
DETAIL AT LANDING
1/4" = 1'-0"



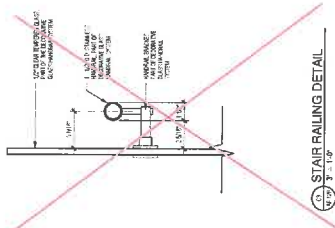
DETAIL AT STAIR
1/4" = 1'-0"



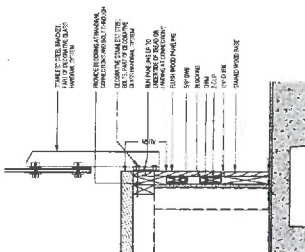
STAIR DETAIL - CARRIAGE SECTION
1/4" = 1'-0"



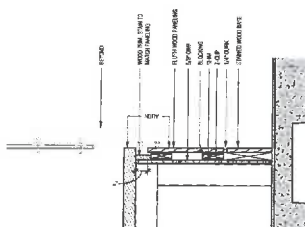
STAIR RAILING DETAIL
3/8" = 1'-0"



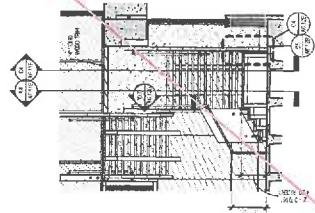
STAIR RAILING DETAIL
3/8" = 1'-0"



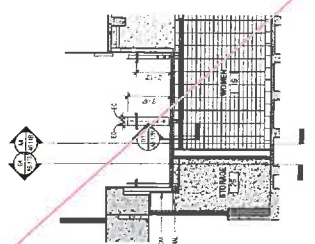
DETAIL AT CONNECTION
1/4" = 1'-0"



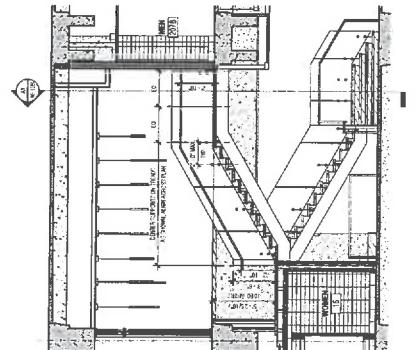
DETAIL AT STAIR
1/4" = 1'-0"



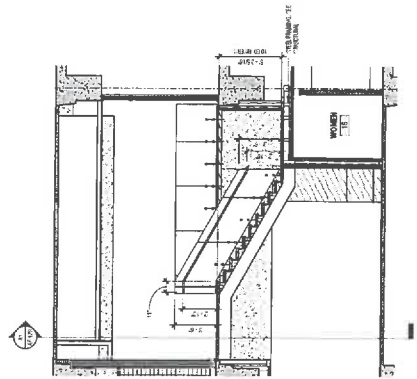
STAIR SECTION
1/4" = 1'-0"



STAIR SECTION
1/4" = 1'-0"



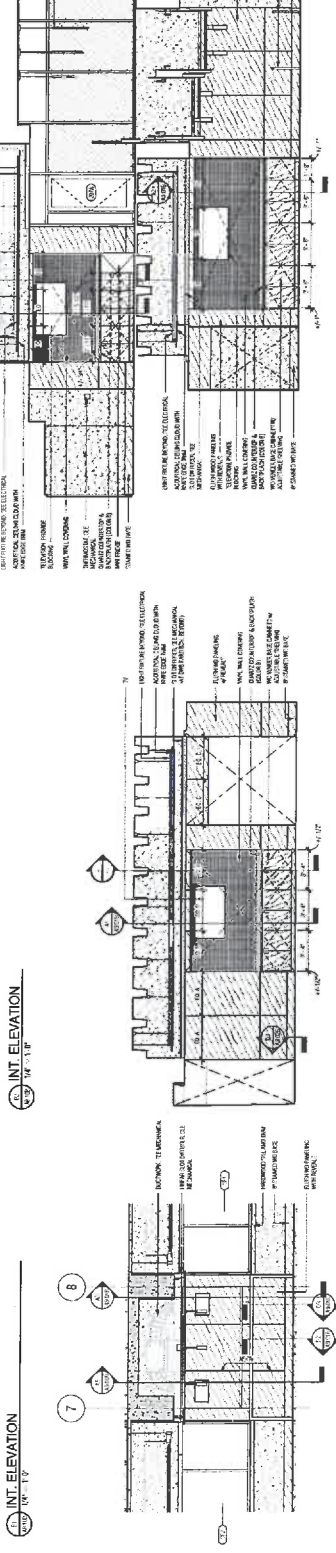
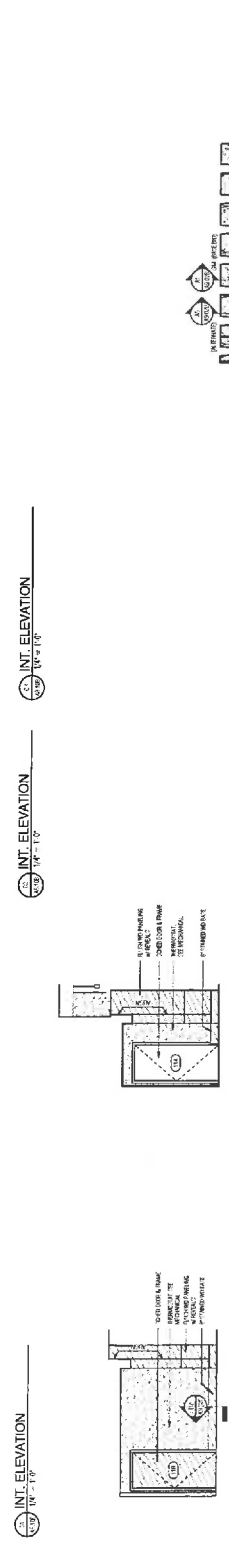
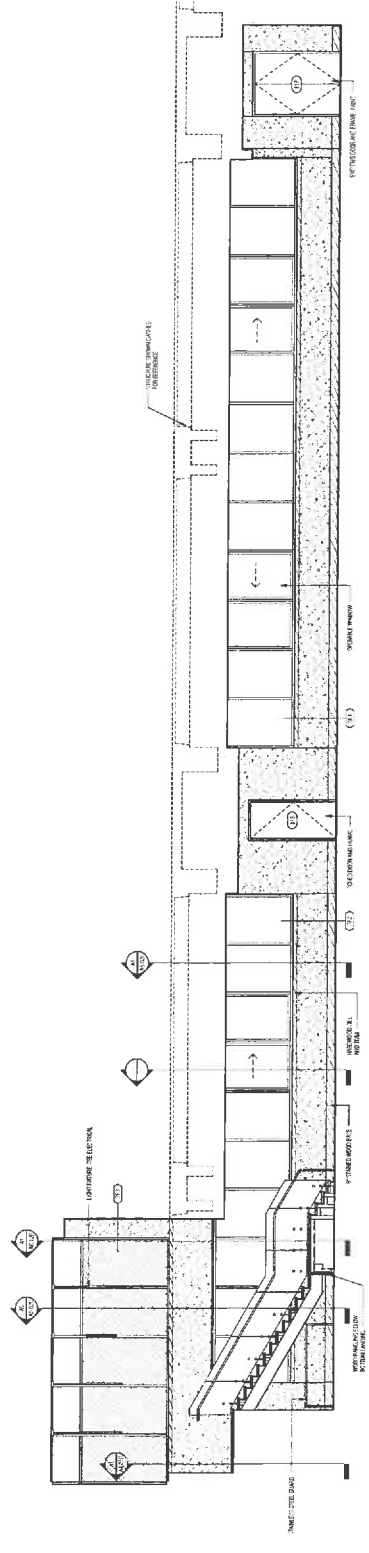
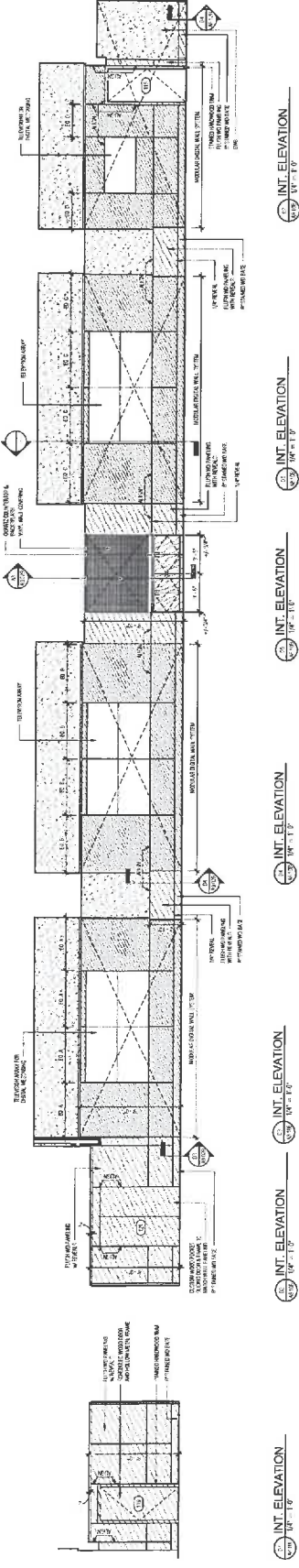
STAIR SECTION
1/4" = 1'-0"



STAIR SECTION
1/4" = 1'-0"



DATE: 01/11/17	NO. 1
PROJECT: WILLIAMS-PRICE STADIUM 100 LEVEL AND SUITE 207 RENOVATIONS	NO. 1
DATE: 01/11/17	NO. 1
PROJECT: WILLIAMS-PRICE STADIUM 100 LEVEL AND SUITE 207 RENOVATIONS	NO. 1



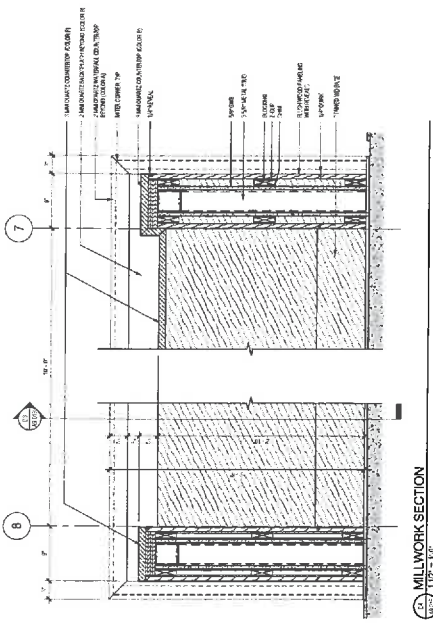
INTERIOR ELEVATION 13

NORTH-ELEVATION - ENTERTAINMENT SUITE 20

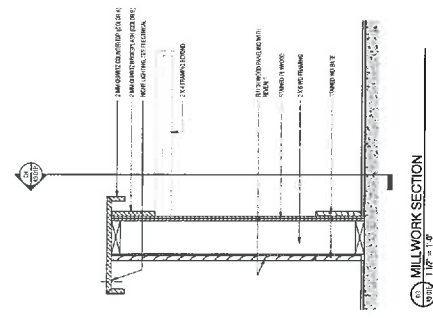
INTERIOR SECTION AT BAR



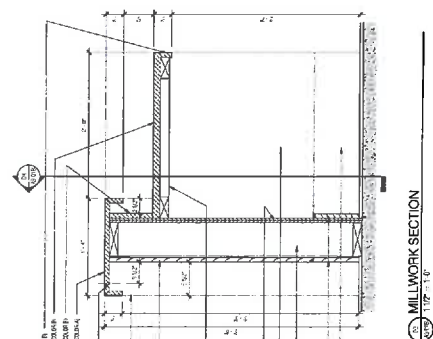
DATE	NOV 11 2017
PROJECT	WILLIAMS-BRICE STADIUM 100 LEVEL AND SUITE 207 RENOVATIONS
DATE	NOV 11 2017
PROJECT	WILLIAMS-BRICE STADIUM 100 LEVEL AND SUITE 207 RENOVATIONS



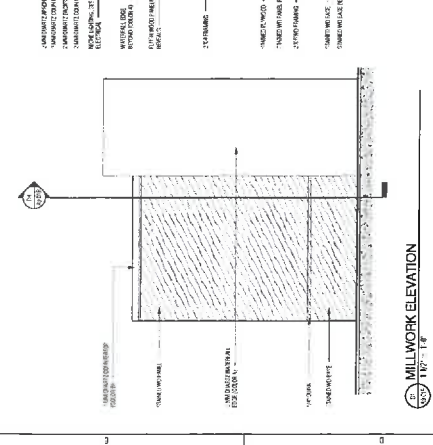
MILLWORK SECTION
1/8" = 1'-0"



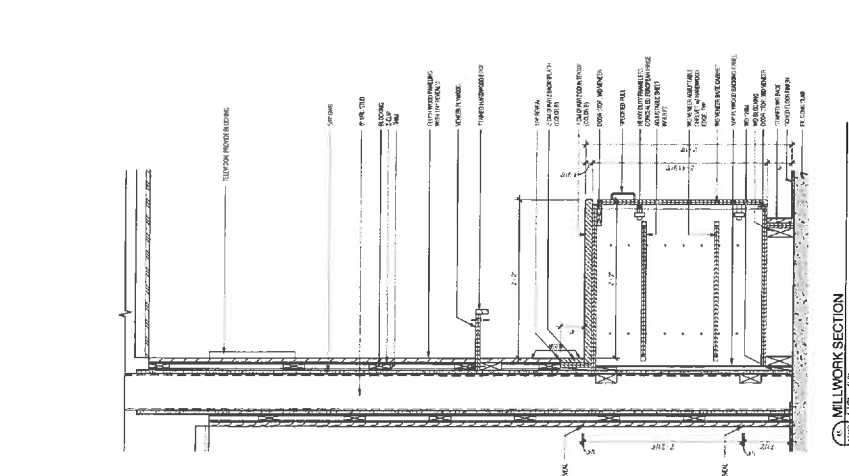
MILLWORK SECTION
1/8" = 1'-0"



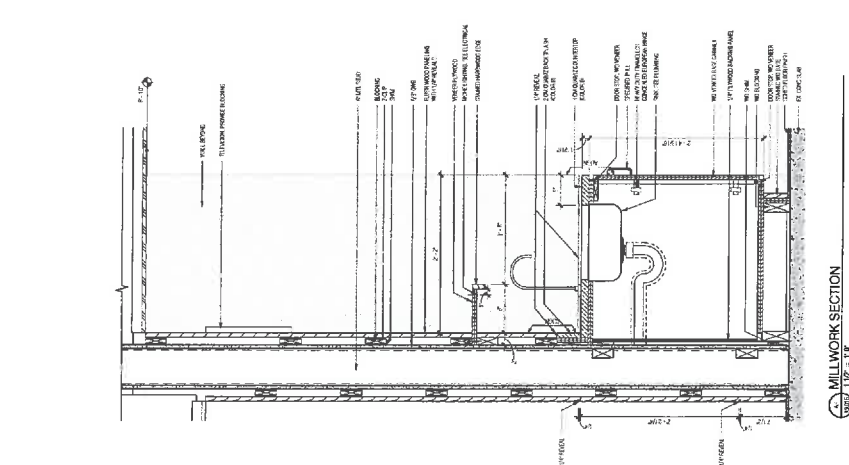
MILLWORK SECTION
1/8" = 1'-0"



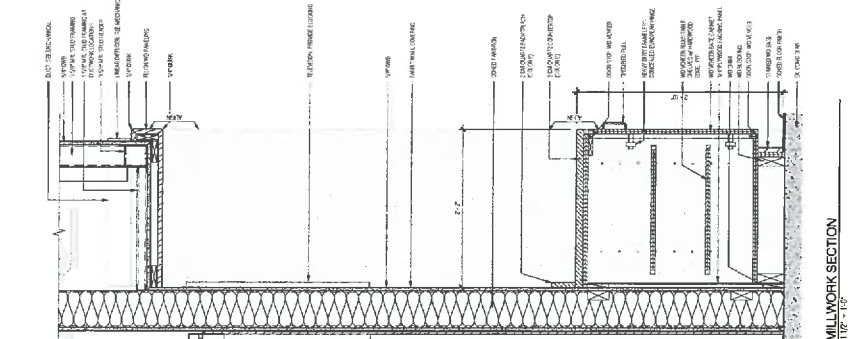
MILLWORK ELEVATION
1/8" = 1'-0"



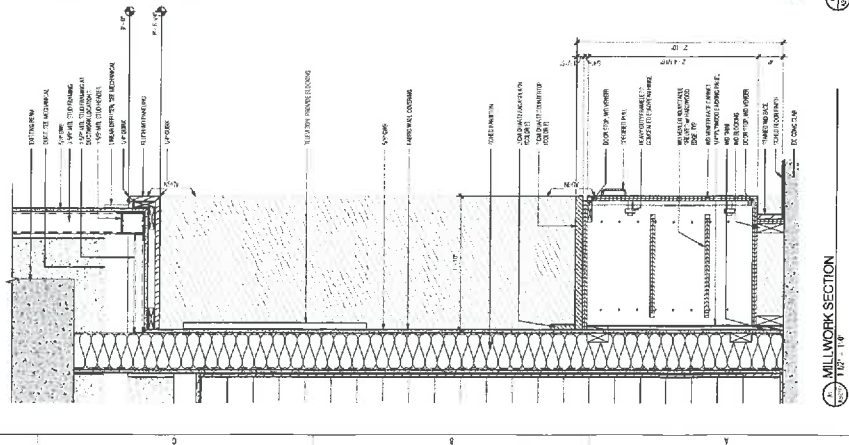
MILLWORK SECTION
1/8" = 1'-0"



MILLWORK SECTION
1/8" = 1'-0"



MILLWORK SECTION
1/8" = 1'-0"



MILLWORK SECTION
1/8" = 1'-0"

