

ISSUE DATE:	MAY 11, 2017	
PHASE:	CONSTRUCTION DOCUMENTS	
#	DATE	REVISION

FLOOR PLANS -
LEVELS 100 & 200

STATE PROJECT NO. 1700
WTS PROJECT NO. SHEET

A1.01B

Vanity 1, Suite 207
(Alt 1)

Vanity 2, Suite 207
(Alt 1)

Cabinet 2, Suite 207

Cabinet 3, Suite 207

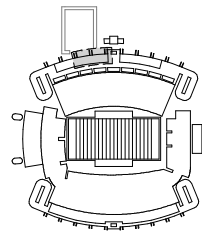
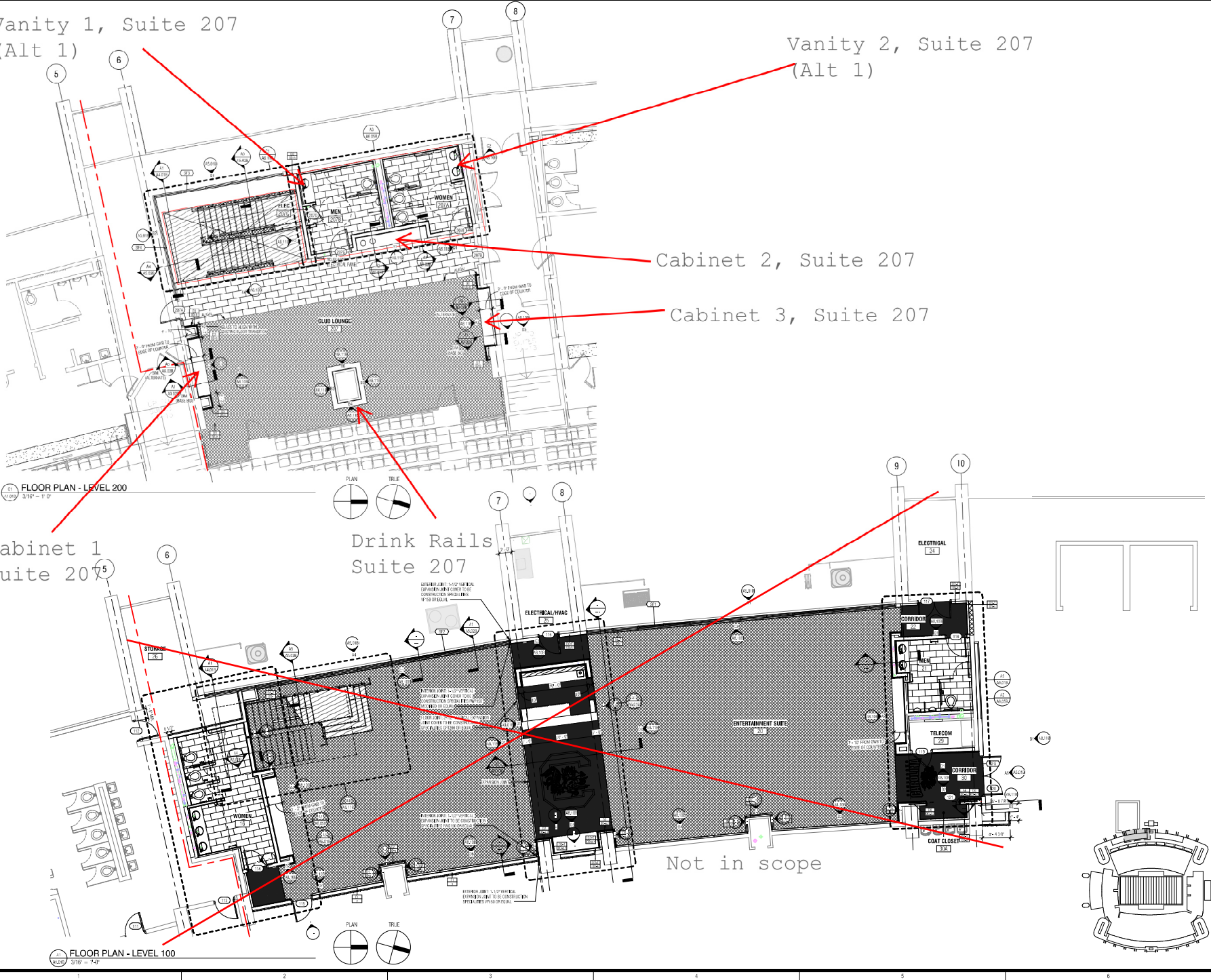
Cabinet 1
Suite 207

Drink Rails
Suite 207

Not in scope

FLOOR PLAN - LEVEL 200
3/16" = 1' 0"

FLOOR PLAN - LEVEL 100
3/16" = 1' 0"

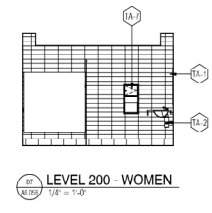
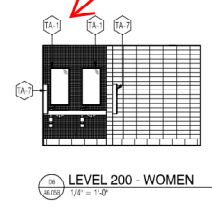
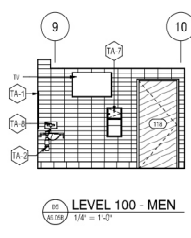
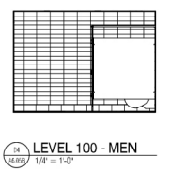
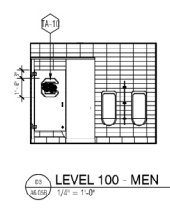
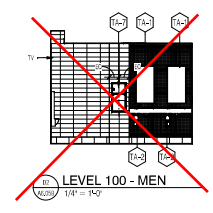
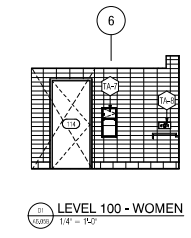
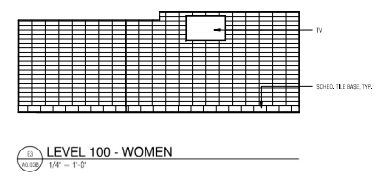
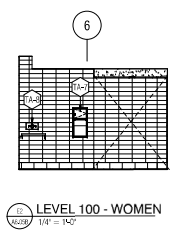
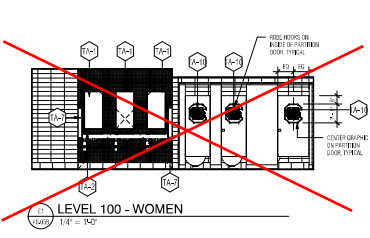


This drawing is the property of Watson Tate Savorly Inc. and shall not be used, copied, or reproduced in any form without the written consent of Watson Tate Savorly Inc. All rights reserved.

Copyright © 2017 Watson Tate Savorly Inc. All rights reserved.

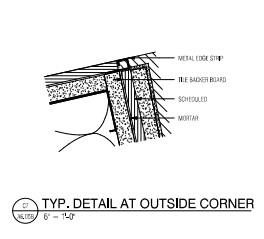
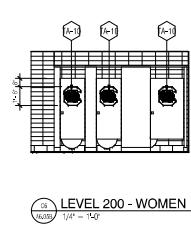
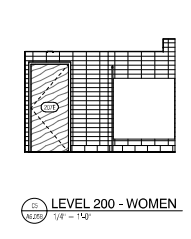
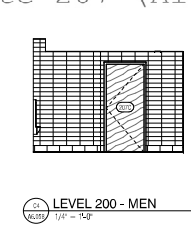
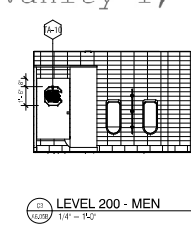
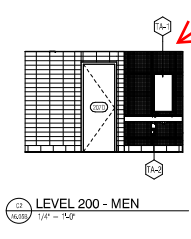
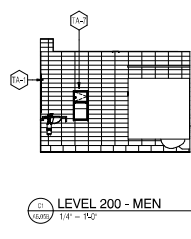
3/11/2017 10:33:50 AM

TOILET ACCESSORIES			
NO.	ITEM	MFG.	MODEL NO.
TA-1	GLASS MIRROR WITH STAINLESS STEEL CHANNELED FRAME (18" X 36")	BOBBIK	B-1536 SERIES
TA-2	COUNTERTOP MOUNTED ALL-DIAPHRAGM SOAP DISPENSER	—	FURNISHED BY OWNER
TA-3	18" STAINLESS STL. GRAB BAR w/ SATIN FINISH (HORIZONTALLY MOUNTED)	BOBBIK	B-4606.39
TA-4	42" STAINLESS STL. GRAB BAR w/ SATIN FINISH (HORIZONTALLY MOUNTED)	BOBBIK	B-4606.39
TA-5	18" STAINLESS STL. GRAB BAR w/ SATIN FINISH (VERTICALLY MOUNTED)	BOBBIK	B-4606.39
TA-6	MULTI-TURN TOILET TISSUE DISPENSER (SURFACE-ACCOUNT)	—	FURNISHED BY OWNER
TA-7	SURFACE MOUNTED COMBINATION TOWEL AND WASTE UNIT	BOBBIK	BC-2558
TA-8	FACIAL TISSUE DISPENSER	BRADLEY	987-36
TA-9	SANITARY NAPKIN DISPOSAL	BOBBIK	B-1354 AND B-1355
TA-10	RUDE HOOK	BOBBIK	B-6717



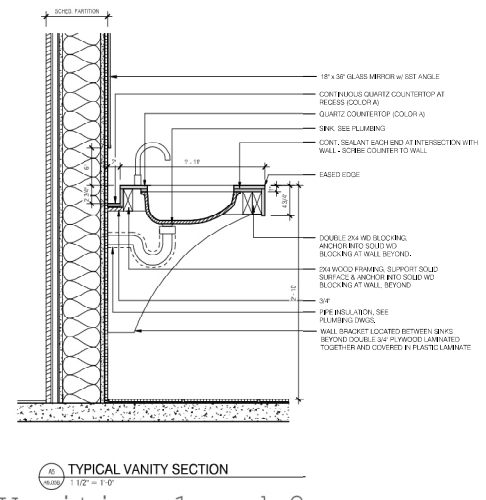
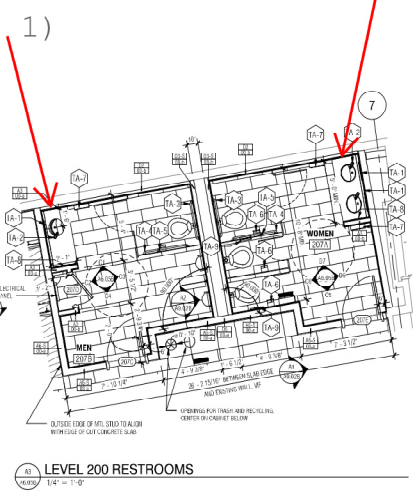
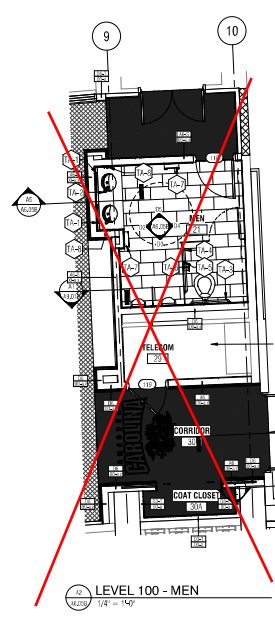
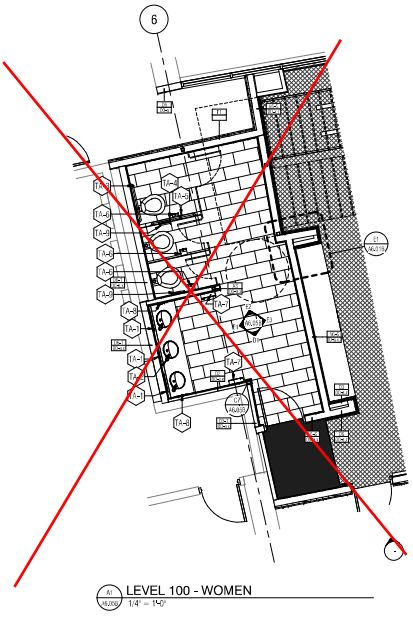
Vanity 2, Suite 207 (Alt 1)

Vanity 1, Suite 207 (Alt 1)



Vanity 2 Suite 207 (Alt 2)

Vanity 1 Suite 207 (Alt 1)

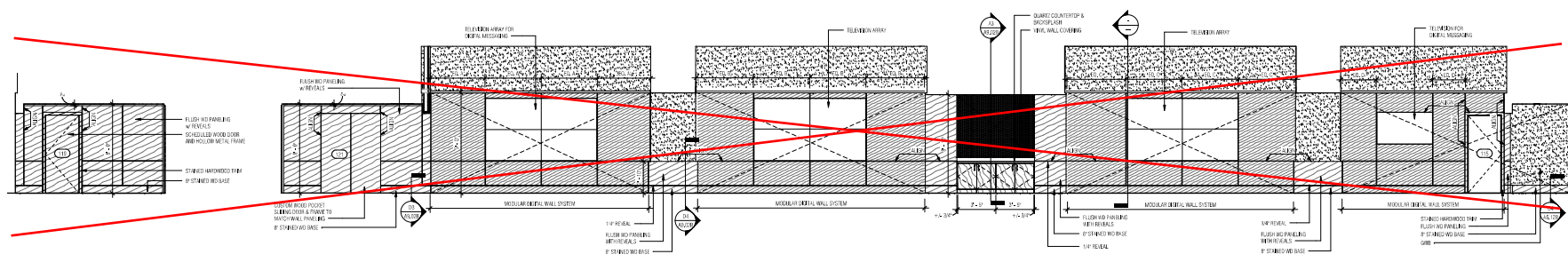


Vanities 1 and 2 Suite 207 (Alt 1)

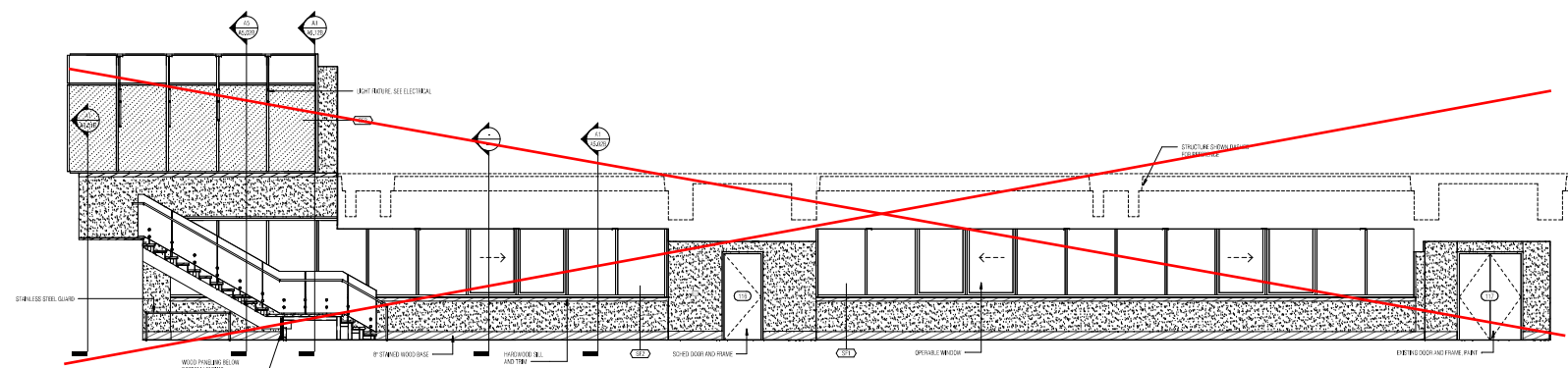
ISSUE DATE:	MAY 11, 2017
PHASE:	CONSTRUCTION DOCUMENTS
# DATE	REVISION

ENLARGED TOILET PLANS & ELEVATIONS

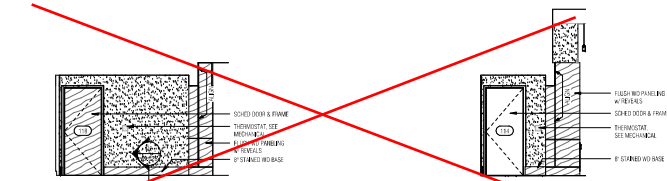
ISSUE DATE:	MAY 11, 2017	
PHASE:	CONSTRUCTION DOCUMENTS	
#	DATE	REVISION



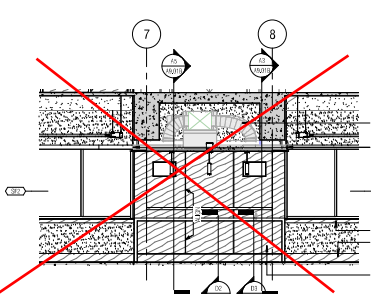
INT. ELEVATION 1/4" = 1'-0" INT. ELEVATION 1/4" = 1'-0" INT. ELEVATION 1/4" = 1'-0" INT. ELEVATION 1/4" = 1'-0" INT. ELEVATION 1/4" = 1'-0" INT. ELEVATION 1/4" = 1'-0" INT. ELEVATION 1/4" = 1'-0"



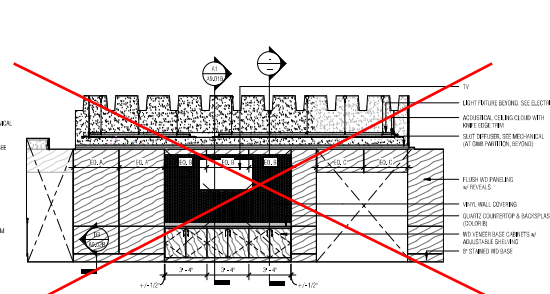
INT. ELEVATION 1/4" = 1'-0" INT. ELEVATION 1/4" = 1'-0" INT. ELEVATION 1/4" = 1'-0"



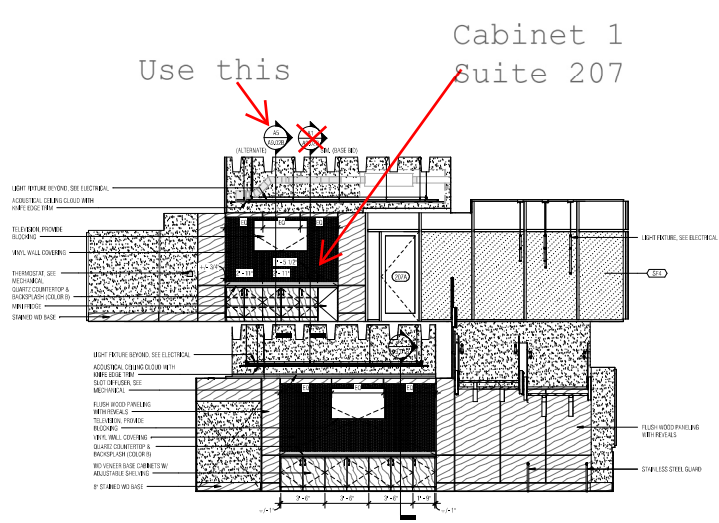
INT. ELEVATION 1/4" = 1'-0" INT. ELEVATION 1/4" = 1'-0"



INTERIOR SECTION AT BAR 1/4" = 1'-0"

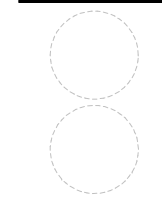


NORTH ELEVATION - ENTERTAINMENT SUITE 20 1/4" = 1'-0"



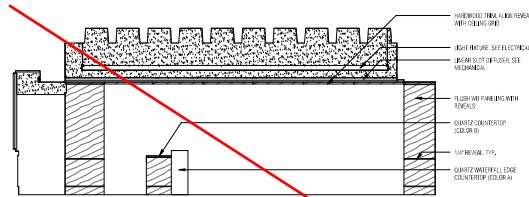
INTERIOR ELEVATION 1/4" = 1'-0"

Copyright © 2017 WTS Architecture, Inc. All rights reserved. No part of this document may be reproduced without the written permission of WTS Architecture, Inc.

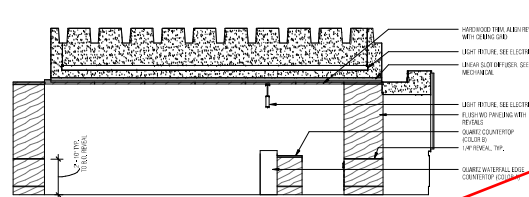


ISSUE DATE:	MAY 11, 2017	
PHASE:	CONSTRUCTION DOCUMENTS	
#	DATE	REVISION

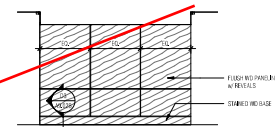
INTERIOR
ELEVATIONS



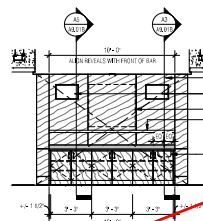
10 NORTH ELEVATION - ENTERTAINMENT SUITE 20 AT BAR
1/4" = 1'-0"



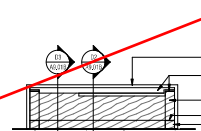
11 SOUTH ELEVATION - ENTERTAINMENT SUITE 20 AT BAR
1/4" = 1'-0"



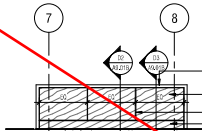
12 INTERIOR ELEVATION
1/4" = 1'-0"



13 INTERIOR ELEVATION
1/4" = 1'-0"

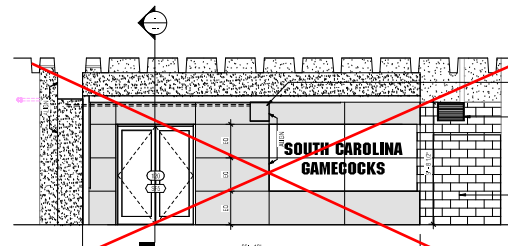


14 INTERIOR ELEVATION
1/4" = 1'-0"

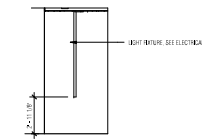


15 INTERIOR ELEVATION
1/4" = 1'-0"

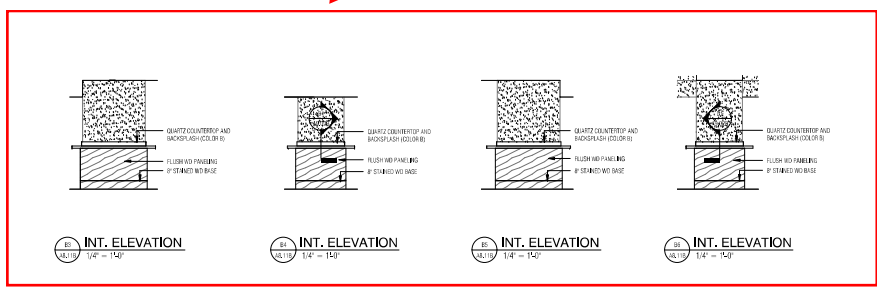
Drink rails
Suite 207



16 INTERIOR ELEVATION
1/4" = 1'-0"



17 INT. ELEVATION
1/4" = 1'-0"



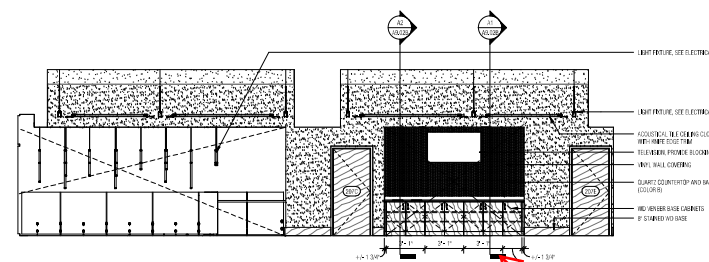
18 INT. ELEVATION
1/4" = 1'-0"

19 INT. ELEVATION
1/4" = 1'-0"

20 INT. ELEVATION
1/4" = 1'-0"

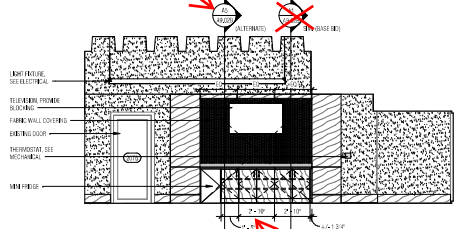
21 INT. ELEVATION
1/4" = 1'-0"

Use this



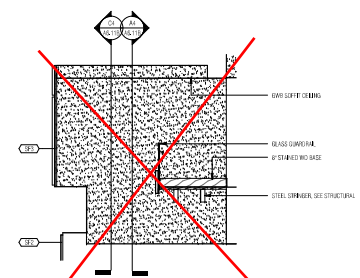
22 INTERIOR ELEVATION
1/4" = 1'-0"

Cabinet 2
Suite 207



23 INTERIOR ELEVATION
1/4" = 1'-0"

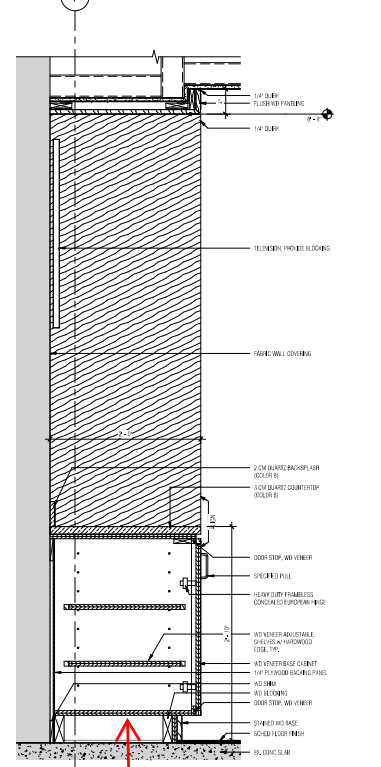
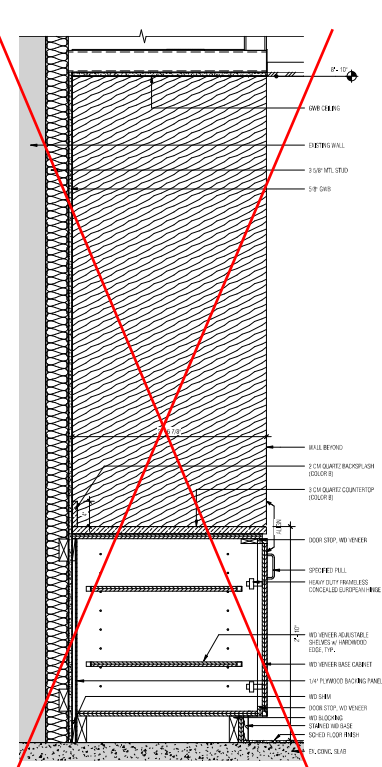
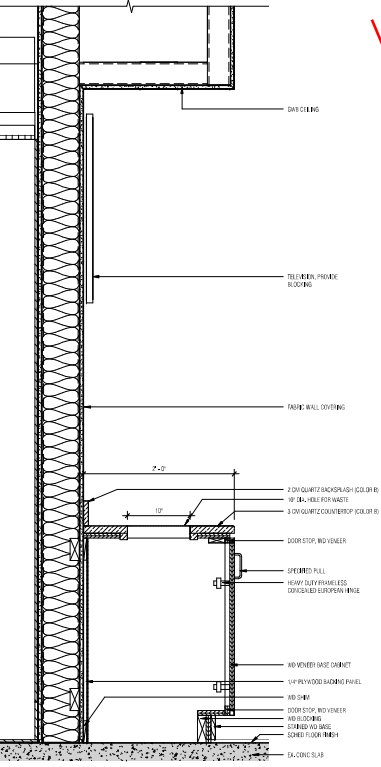
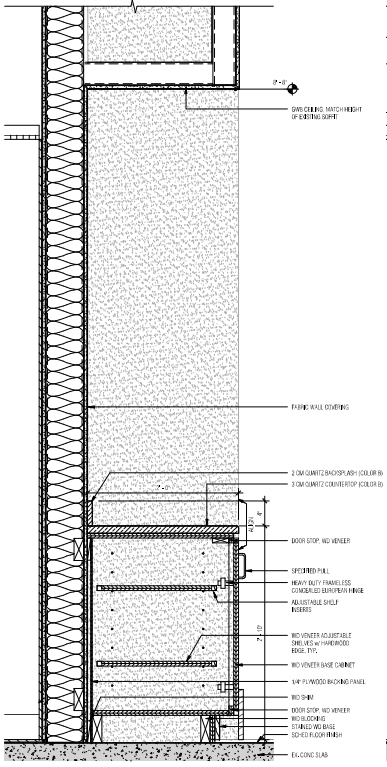
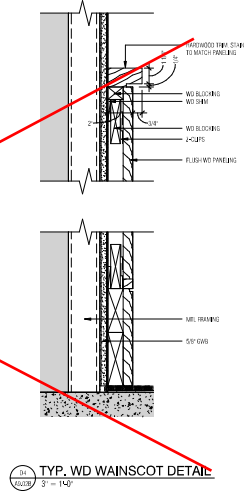
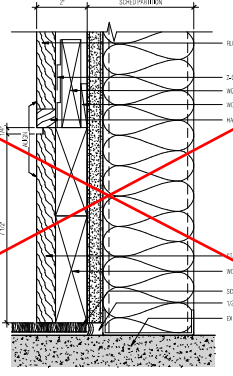
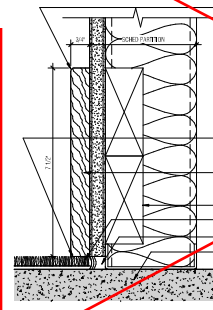
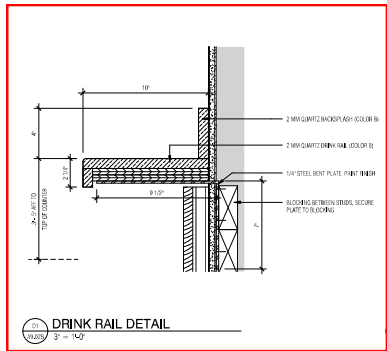
Cabinet 3
Suite 207



24 INTERIOR ELEVATION
1/4" = 1'-0"

3/11/2017 10:19 AM C:\projects\WilliamsPrice\1702\1702\Interior\1702_1122.dwg

Drink rail
Suite 207



Cabinet 2
Suite 207

Cabinet 1 and 3
Suite 207

ISSUE DATE:	MAY 11, 2017	
PHASE:	CONSTRUCTION DOCUMENTS	
#	DATE	REVISION