

GENERAL NOTES

- DIMENSIONS INDICATED ON THESE DRAWINGS ARE TO FACE OF WALL, FACE OF CURTAINWALL, OR CENTERLINE OF STRUCTURAL MEMBER UNLESS OTHERWISE INDICATED. COORDINATE ALL DIMENSIONS WITH ENLARGED PLANS, SECTION AND DETAIL DRAWINGS, AND STRUCTURAL DRAWINGS AND VERIFY EXACT LOCATIONS. REPORT ANY DIMENSIONAL OR PHYSICAL DISCREPANCIES TO ARCHITECT BEFORE PROCEEDING WITH THE WORK.
- CONTACT OWNER UPON DISCOVERY OF ANY SUSPECTED ASBESTOS-CONTAINING MATERIALS OR OTHER SUSPECTED HAZARDOUS MATERIALS NOT SHOWN TO BE REMOVED WITHIN THE PROJECT SCOPE.
- TURN OVER DEMOLISHED MATERIAL AND EQUIPMENT TO OWNER UNLESS NOTED OTHERWISE.
- REFERENCE STRUCTURAL DRAWINGS FOR FULL EXTENT OF STRUCTURAL WORK.
- REFERENCE ELECTRICAL DRAWINGS FOR FULL EXTENT OF ELECTRICAL WORK.
- ILLUMINATED INDIVIDUAL SIGN LETTERS, 'BLOCK C' LOGO, SIGNAGE POWER SUPPLIES AND LOW-VOLTAGE WIRING FROM POWER SUPPLIES TO SIGNAGE ARE NOT A PART OF THIS SCOPE OF WORK, BUT WILL BE BID AND INSTALLED UNDER SEPARATE CONTRACT. REFERENCE SIGNAGE BID DOCUMENTS TO BE PROVIDED BY OWNER TO BE COORDINATED WITH SCOPE OF WORK INDICATED IN THESE DOCUMENTS. GENERAL CONTRACTOR IS RESPONSIBLE FOR FULL COORDINATION BETWEEN THESE DOCUMENTS AND SIGNAGE SCOPE OF WORK TO PROVIDE FOR THE COMPLETE FINAL INSTALLATION.
- CONTRACTOR TO PROVIDE ALL NECESSARY BLOCKING FOR SIGNAGE COMPONENTS INCLUDING ACM PANELS, CANOPIES, ILLUMINATED LETTERS AND BLOCK C'S AS REQUIRED.
- ALTERNATE NO. 1 INCLUDES ALL SCOPE RELATED TO DEMOLITION AND DISPOSAL OF EXISTING UPPER LEVEL ALUM. CANOPY STRUCTURE IN ITS ENTIRETY INCLUDING ROOFING, FLASHING, FRAMING, CABLES, CONNECTIONS, ETC. REPAIR OF REMAINING HOLES OR DAMAGE THAT WOULD REMAIN VISIBLE, AND ADDITION OF NEW GLASS CANOPY AND HARDWARE.

ALTERNATE NO. 1
 DEMO AND DISPOSE OF EXISTING ALUM.
 CANOPY STRUCTURE IN ITS ENTIRETY,
 INCLUDING ROOFING, FLASHING, FRAMING,
 CABLES, CONNECTIONS, ETC.
 PLUG, REPAIR, CAULK, SEAL AND PAINT ALL
 REMAINING HOLES OR DAMAGE THAT WILL
 REMAIN VISIBLE AFTER NEW CONSTRUCTION

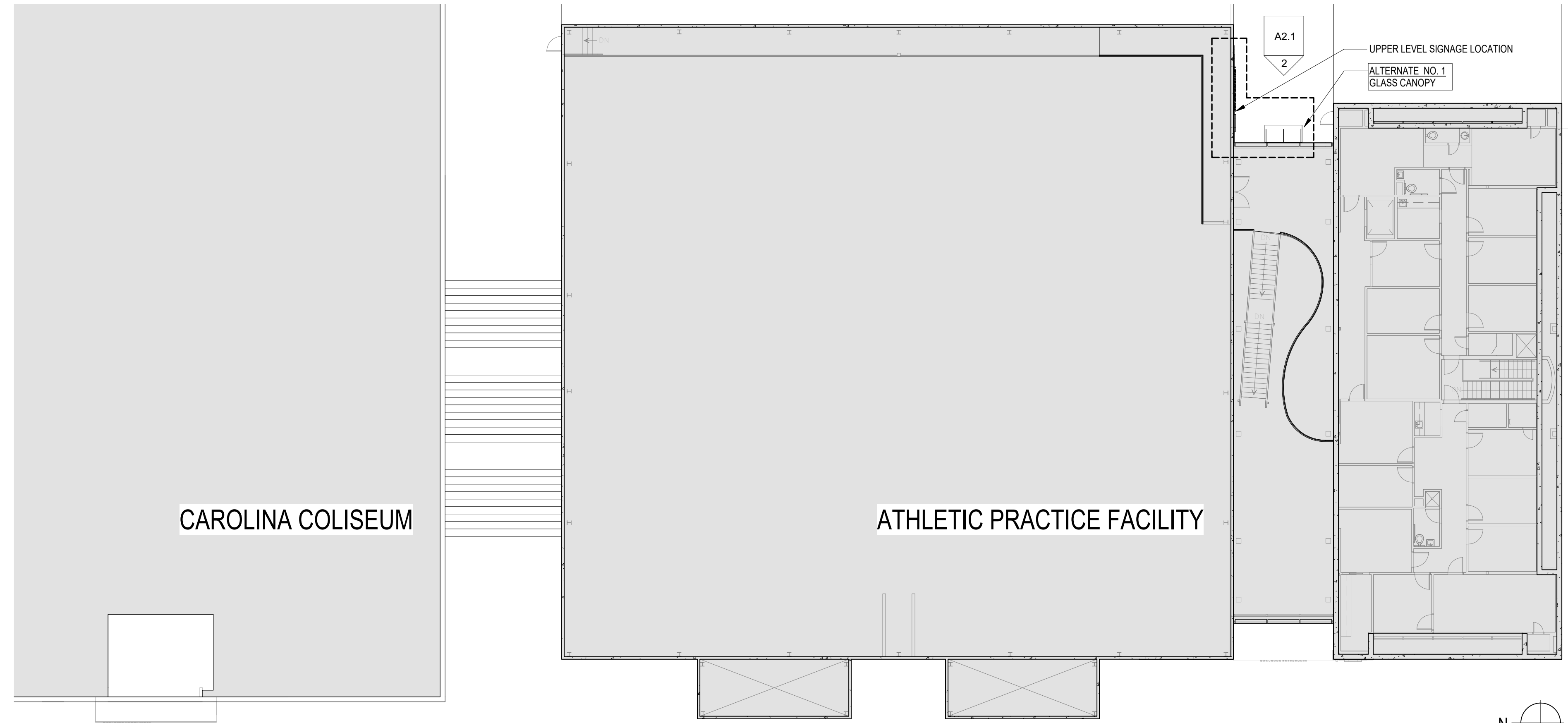
(2) EXISTING LIGHTS TO REMAIN,
 SEE ELEC. DWGS.

ALL DEVICES THIS WALL TO REMAIN



(2) EXISTING LIGHTS TO REMAIN,
 SEE ELEC. DWGS.

2 DEMO AT UPPER LEVEL ENTRY CANOPY
 A1.0 3" = 1'-0" REFERENCED OK



1 SITE REFERENCE PLAN - UPPER LEVEL
 A1.0 1/16" = 1'-0" REFERENCED A1.1A OK



DEMO AND DISPOSE OF EXISTING ALUM.
 CANOPY STRUCTURE IN ITS ENTIRETY,
 INCLUDING ROOFING, FLASHING, FRAMING,
 CABLES, CONNECTIONS, ETC.
 PLUG, REPAIR, CAULK, SEAL AND PAINT ALL
 REMAINING HOLES OR DAMAGE THAT WILL
 REMAIN VISIBLE AFTER NEW CONSTRUCTION

(2) EXISTING LIGHTS TO BE REMOVED,
 SEE ELEC. DWGS.

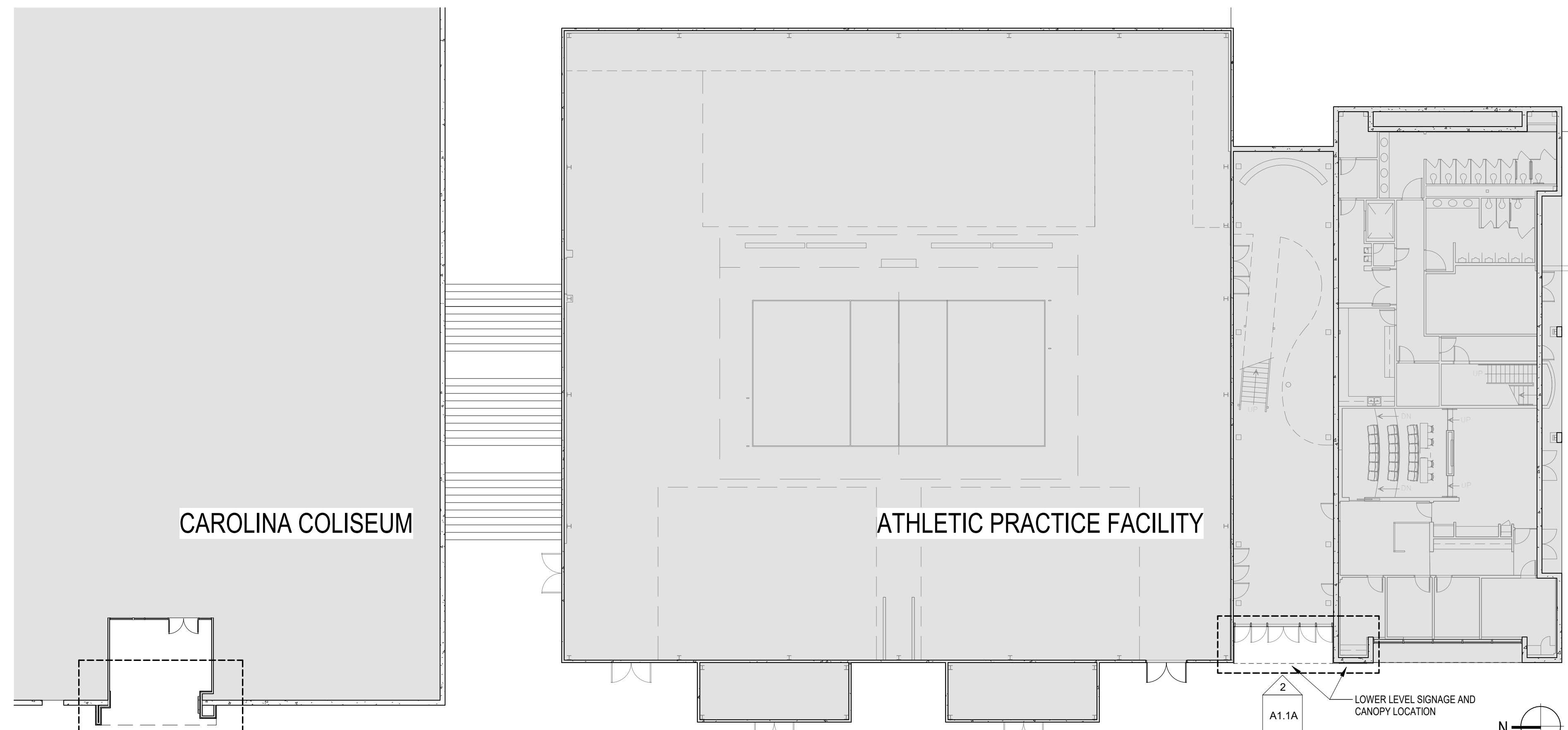
(3) EXISTING SIGNS ADHERED TO
 GLASS TO BE REMOVED, TURN OVER
 TO OWNER

EXISTING ELEC. BOX TO REMAIN,
 SEE ELEC. DWGS.

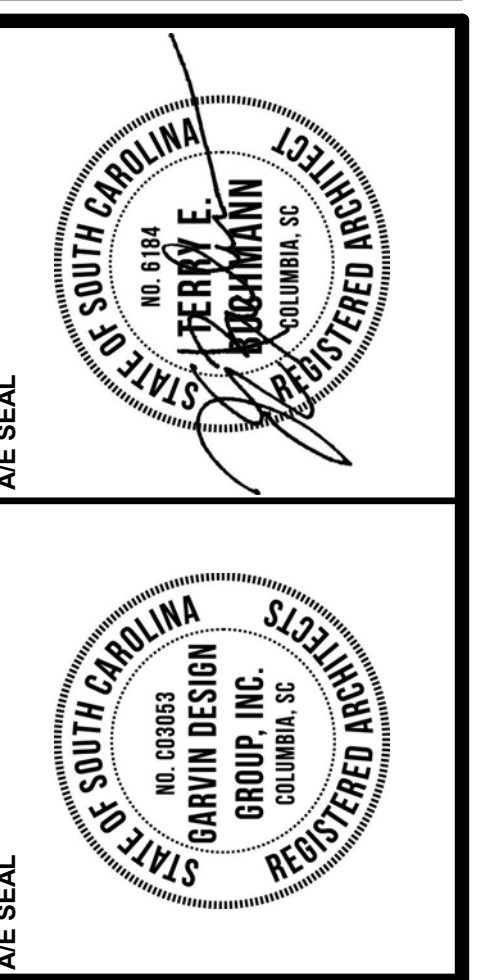
(2) EXISTING LIGHTS TO BE REMOVED,
 SEE ELEC. DWGS.

EXISTING CAMERA TO REMAIN,
 SEE ELEC. DWGS.

4 DEMO AT LOWER LEVEL ENTRY CANOPY
 A1.0 3" = 1'-0" REFERENCED OK



3 SITE REFERENCE PLAN - LOWER LEVEL
 A1.0 1/16" = 1'-0" REFERENCED A1.1A OK



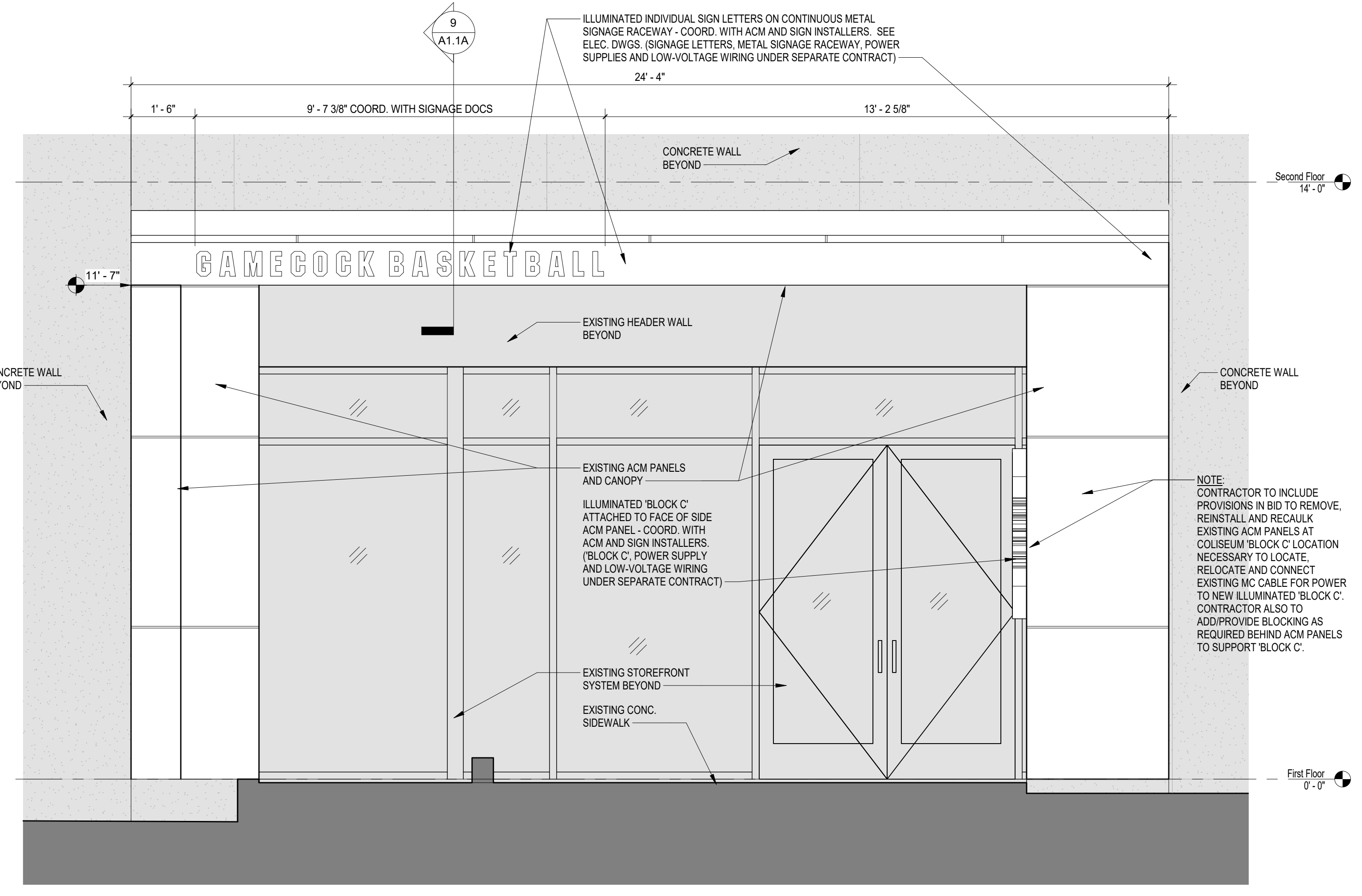
PROJECT TITLE
**ATHLETICS PRACTICE FACILITY -
 MODIFY ENTRANCES**
 USC Project Number: #50003163
 ATHLETIC PRACTICE FACILITY
 1001 BLOSSOM ST.
 COLUMBIA, SC 29208

NO.	REVISIONS	NAME	DATE

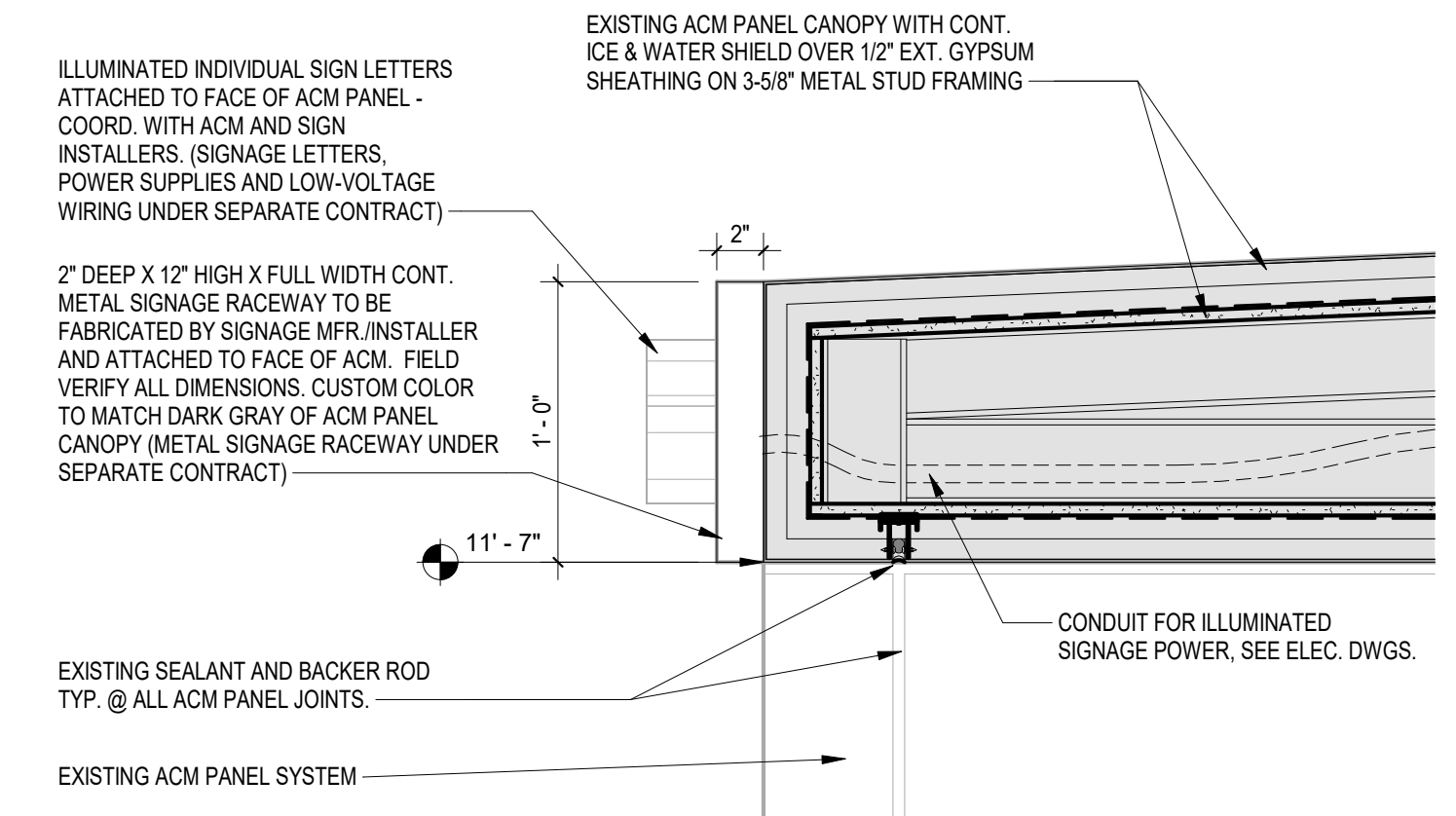
DRAWN BY: A1/12
CHECKED BY: [Signature]
THESE DRAWINGS AND THE DESIGN INFORMATION CONTAINED HEREIN ARE THE PROPERTY OF GARVIN DESIGN GROUP, INC. AND ARE NOT TO BE REPRODUCED OR TRANSMITTED IN ANY FORM OR BY ANY MEANS, ELECTRONIC OR MECHANICAL, INCLUDING PHOTOCOPYING, RECORDING, OR BY ANY INFORMATION STORAGE AND RETRIEVAL SYSTEM, WITHOUT THE WRITTEN CONSENT OF GARVIN DESIGN GROUP, INC.

DRAWING TITLE
**SITE REFERENCE PLANS AND
 DEMOLITION NOTES**

PROJECT NO. 1043.16
DATE 08.25.17
DRAWING NO. **A1.0**



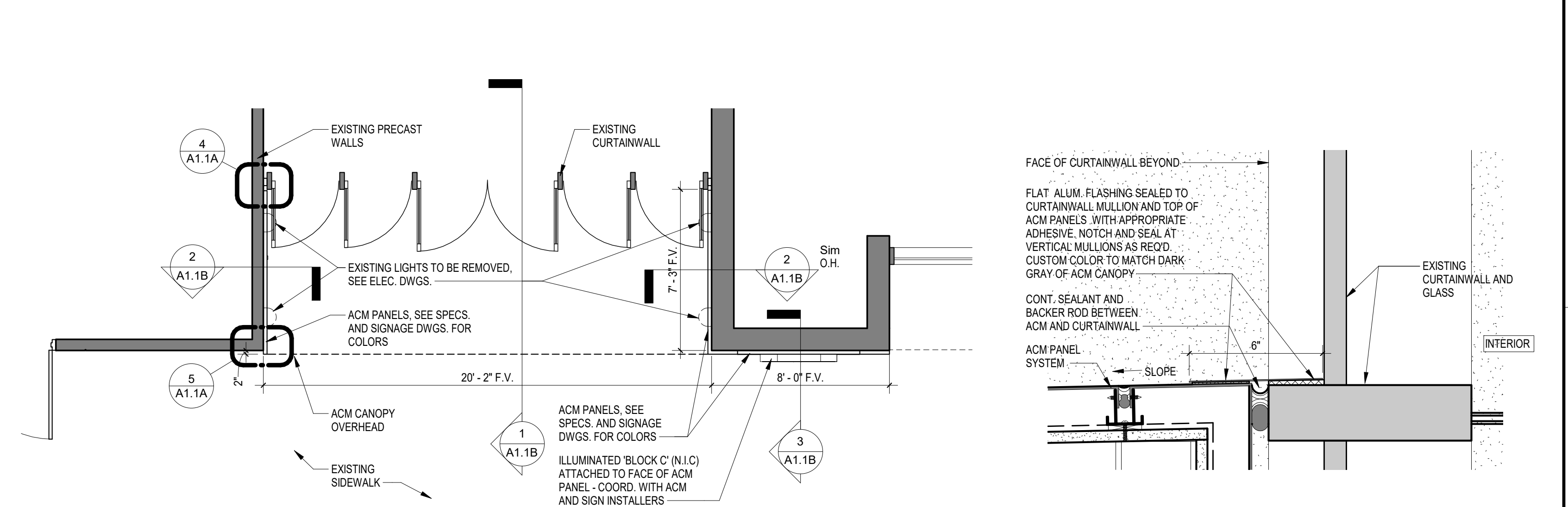
8 WEST ELEVATION - COLISEUM ENTRY
A1.1A 1/2" = 1'-0"
REFERENCED: A1.0
OK



9 SECTION AT COLISEUM CANOPY SIGNAGE
A1.1A 1 1/2" = 1'-0"
REFERENCED: A1.1A
OK

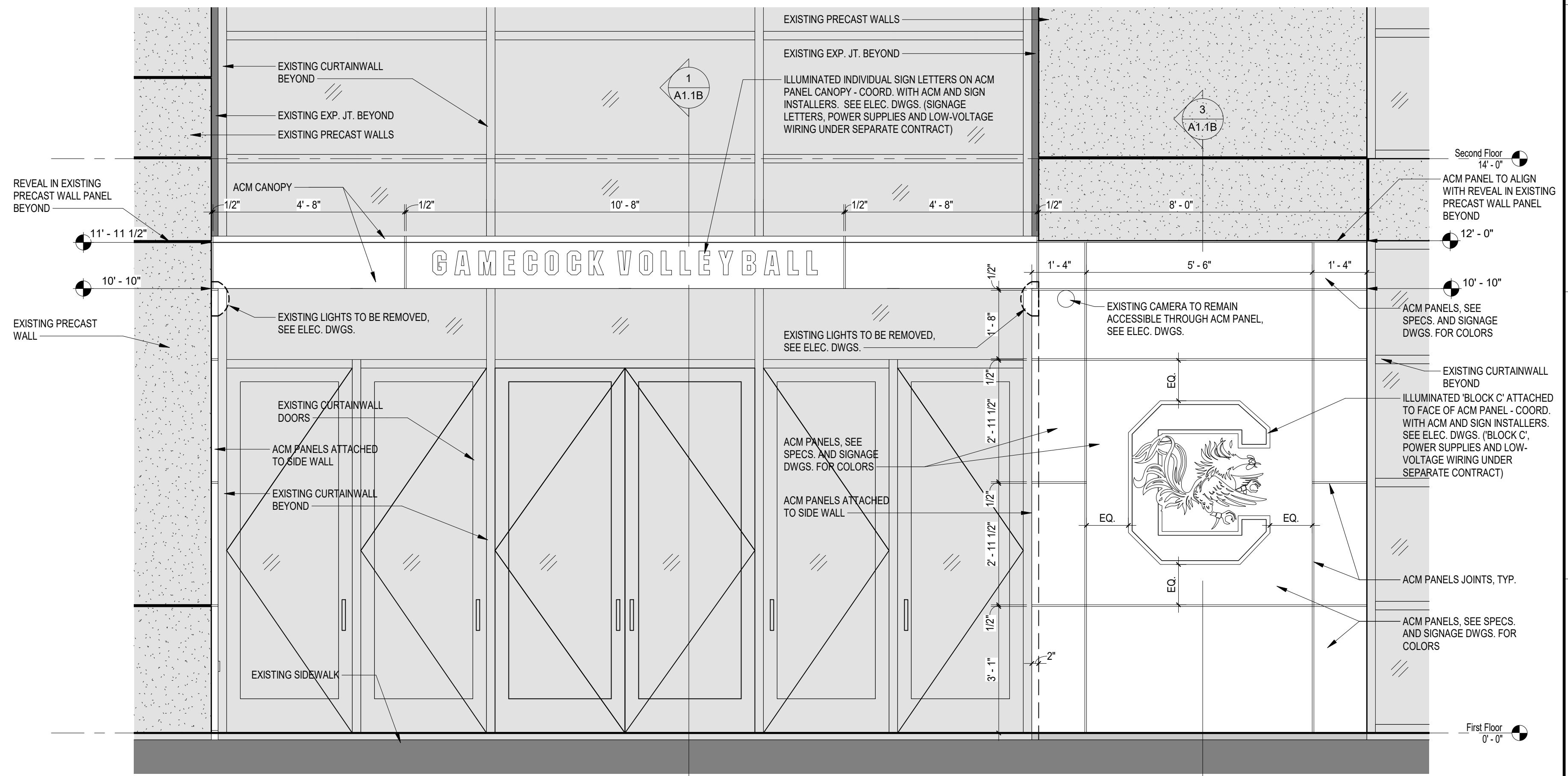


10 3D VIEW AT COLISEUM ENTRY
A1.1A
REFERENCED: OK

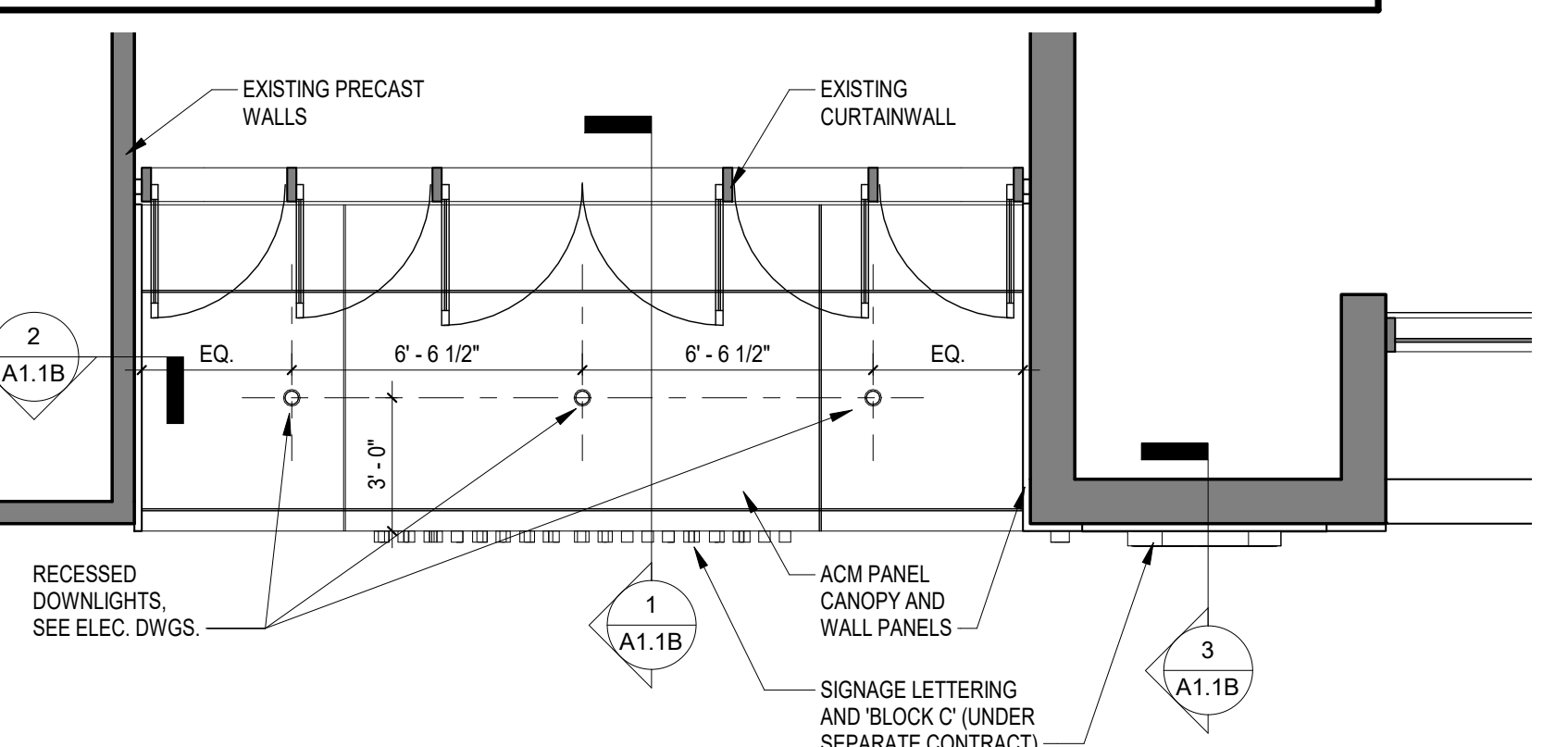


1 LOWER LEVEL FLOOR PLAN
A1.1A 1/4" = 1'-0"
REFERENCED: A1.1A
OK

3 DETAIL AT CANOPY FLASHING
A1.1A 3" = 1'-0"
REFERENCED: A1.1B
OK



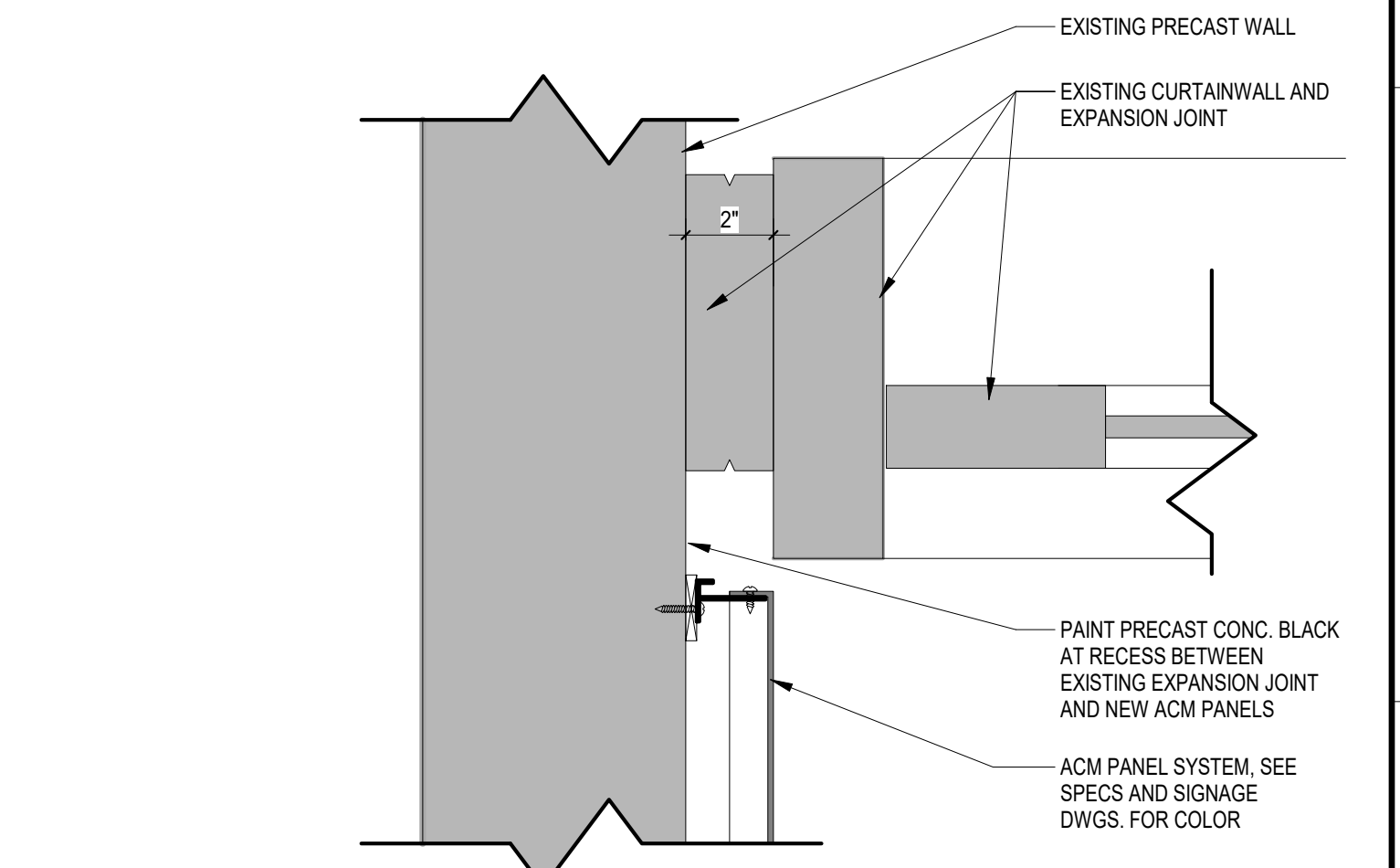
2 WEST ELEVATION - LOWER LEVEL
A1.1A 1/2" = 1'-0"
REFERENCED: A1.0
OK



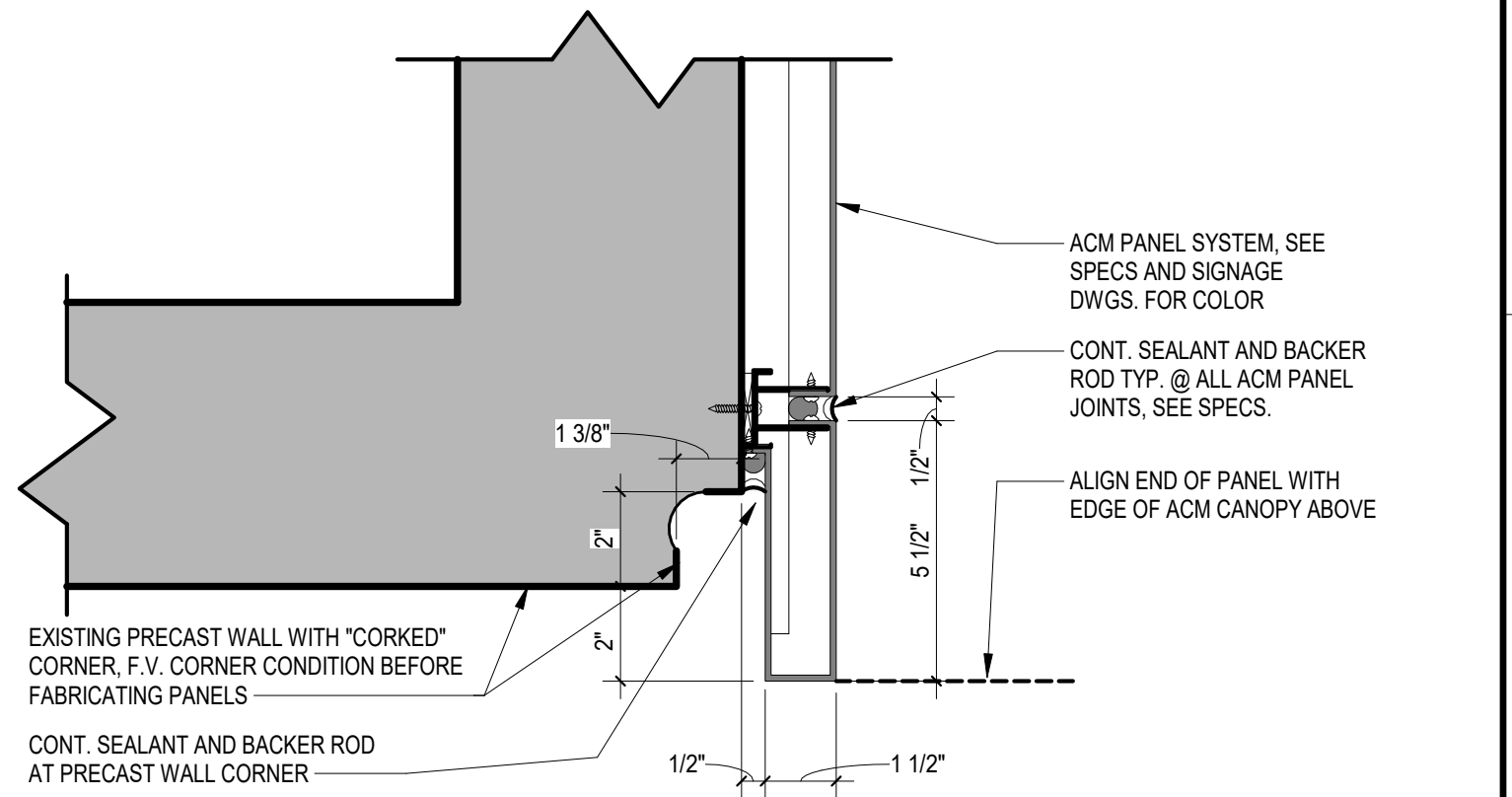
7 REFLECTED CEILING PLAN - LOWER LEVEL CANOPY
A1.1A 1/4" = 1'-0"
REFERENCED: A1.1A
OK



6 3D VIEW AT LOWER ENTRY
A1.1A
REFERENCED: OK



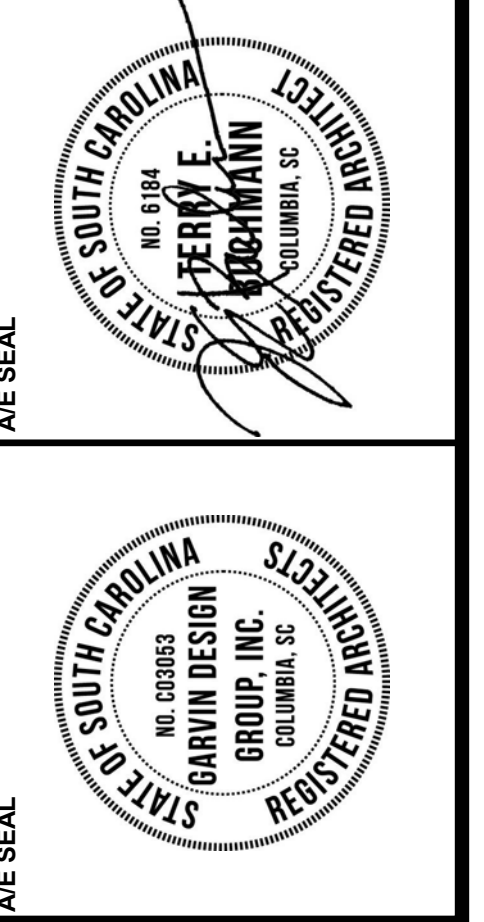
4 PLAN DETAIL - AT CURTAINWALL
A1.1A 3" = 1'-0"
REFERENCED: A1.1A
OK



5 PLAN DETAIL - AT CORNER
A1.1A 3" = 1'-0"
REFERENCED: A1.1A
OK

GENERAL NOTES

- DIMENSIONS INDICATED ON THESE DRAWINGS ARE TO FACE OF WALL, FACE OF CURTAINWALL, OR CENTERLINE OF STRUCTURAL MEMBERS UNLESS OTHERWISE INDICATED. COORDINATE ALL DIMENSIONS WITH ENLARGED PLANS, SECTION AND DETAIL DRAWINGS, AND STRUCTURAL DRAWINGS AND VERIFY EXACT LOCATIONS. REPORT ANY DIMENSIONAL OR PHYSICAL DISCREPANCIES TO ARCHITECT BEFORE PROCEEDING WITH THE WORK.
- CONTACT OWNER UPON DISCOVERY OF ANY SUSPECTED ASBESTOS-CONTAINING MATERIALS OR OTHER SUSPECTED HAZARDOUS MATERIALS NOT SHOWN TO BE REMOVED WITHIN THE PROJECT SCOPE.
- TURN OVER DEMOLISHED MATERIAL AND EQUIPMENT TO OWNER UNLESS NOTED OTHERWISE.
- REFERENCE STRUCTURAL DRAWINGS FOR FULL EXTENT OF STRUCTURAL WORK.
- REFERENCE ELECTRICAL DRAWINGS FOR FULL EXTENT OF ELECTRICAL WORK.
- ILLUMINATED INDIVIDUAL SIGN LETTERS, BLOCK 'C' LOGO, SIGNAGE POWER SUPPLIES AND LOW-VOLTAGE WIRING FROM POWER SUPPLIES TO SIGNAGE ARE NOT A PART OF THIS SCOPE OF WORK, BUT WILL BE BID AND INSTALLED UNDER SEPARATE CONTRACT. REFERENCE SIGNAGE BID DOCUMENTS TO BE PROVIDED BY OWNER TO BE COORDINATED WITH SCOPE OF WORK INDICATED IN THESE DOCUMENTS. GENERAL CONTRACTOR IS RESPONSIBLE FOR FULL COORDINATION BETWEEN THESE DOCUMENTS AND SIGNAGE SCOPE OF WORK TO PROVIDE FOR THE COMPLETE FINAL INSTALLATION.
- CONTRACTOR TO PROVIDE ALL NECESSARY BLOCKING FOR SIGNAGE COMPONENTS INCLUDING ACM PANELS, CANOPIES, ILLUMINATED LETTERS AND BLOCK 'C'S AS REQUIRED.
- ALTERNATE NO. 1 INCLUDES ALL SCOPE RELATED TO DEMOLITION AND DISPOSAL OF EXISTING UPPER LEVEL ALUM. CANOPY STRUCTURE IN ITS ENTIRETY INCLUDING ROOFING, FLASHING, FRAMING, CABLES, CONNECTIONS, ETC. REPAIR OF REMAINING HOLES OR DAMAGE THAT WOULD REMAIN VISIBLE, AND ADDITION OF NEW GLASS CANOPY AND HARDWARE.



**ATHLETICS PRACTICE FACILITY -
MODIFY ENTRANCES**
USC Project Number: #50003 63
ATHLETIC PRACTICE FACILITY
1001 BLOSSOM ST.
COLUMBIA, SC 29208

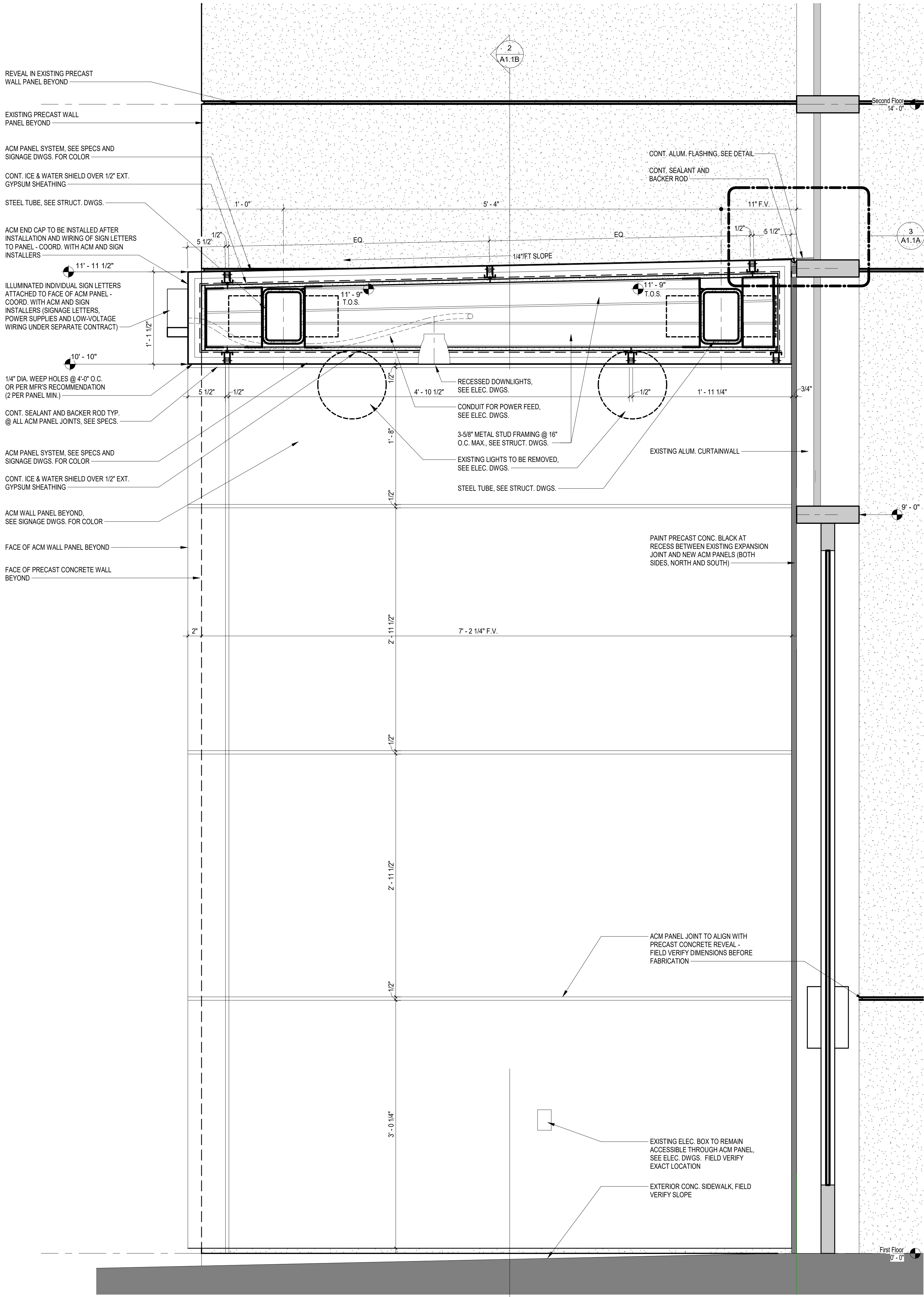
NO.	REVISIONS	NAME	DATE

DRAWN BY: A1.1A
CHECKED BY: A1.1A
THIS DRAWING IS THE PROPERTY OF GARVIN DESIGN GROUP, INC. IT IS TO BE USED ONLY FOR THE PROJECT AND SITE SPECIFICALLY IDENTIFIED HEREON. IT IS NOT TO BE REPRODUCED OR COPIED IN ANY MANNER WITHOUT THE WRITTEN CONSENT OF GARVIN DESIGN GROUP, INC. ANY UNAUTHORIZED REPRODUCTION OR USE IS STRICTLY PROHIBITED AND WILL BE PROSECUTED TO THE FULL EXTENT OF THE LAW.

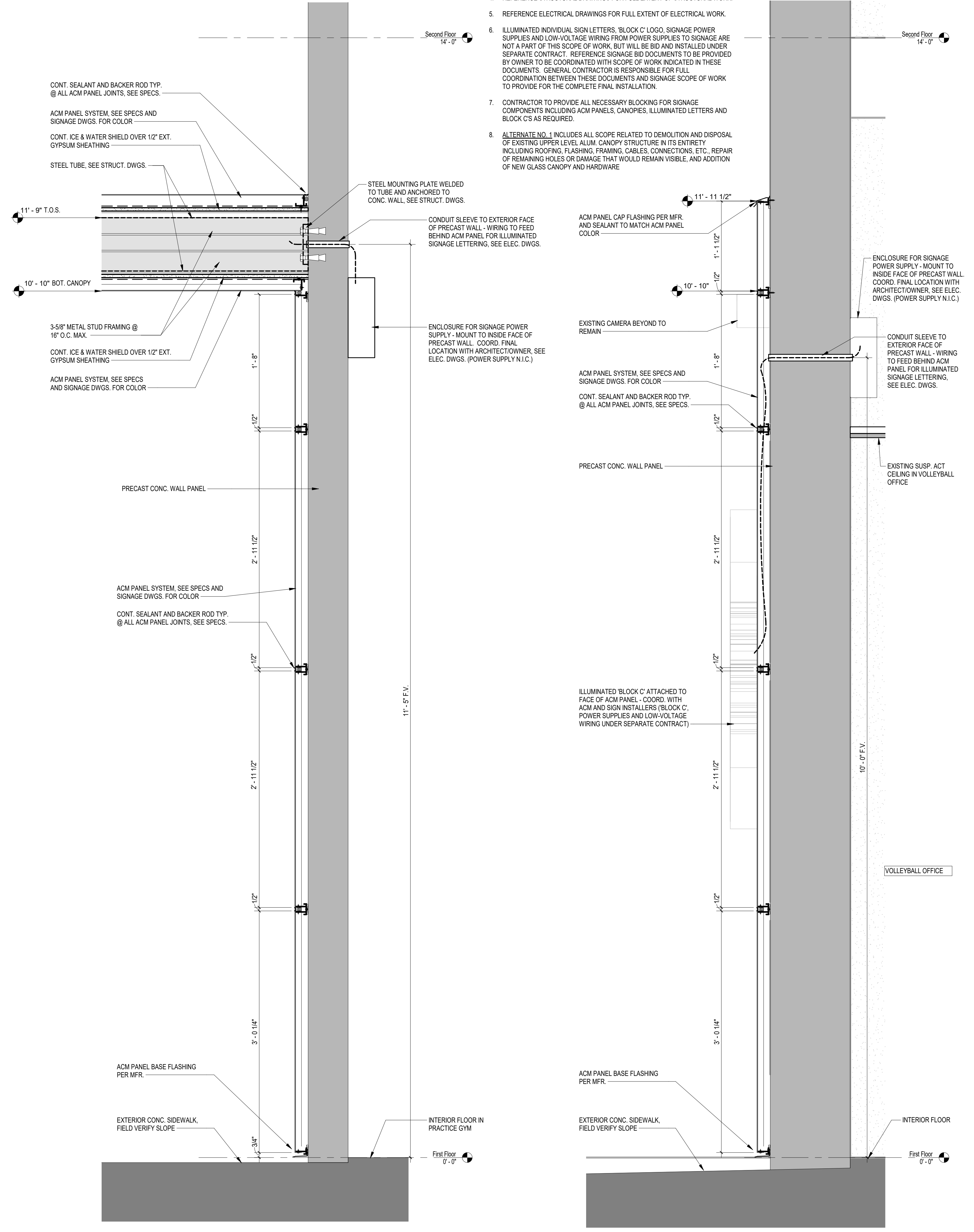
**COLISEUM AND LOWER LEVEL
DETAILS**

DRAWING NO. A1.1A

5/31/2017 8:42:42 AM



1 SECTION - LOWER LEVEL CANOPY
 A1.1B 1 1/2" = 1'-0"
 REFERENCED: A1.1A

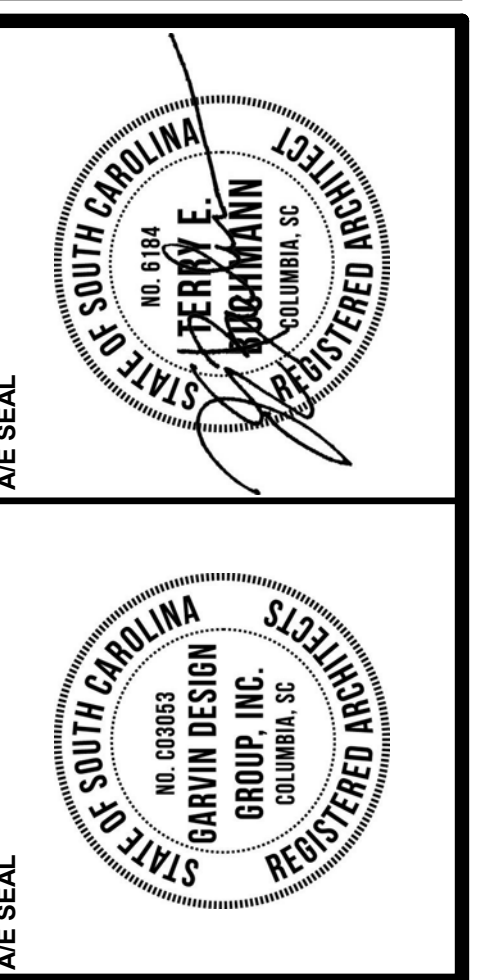
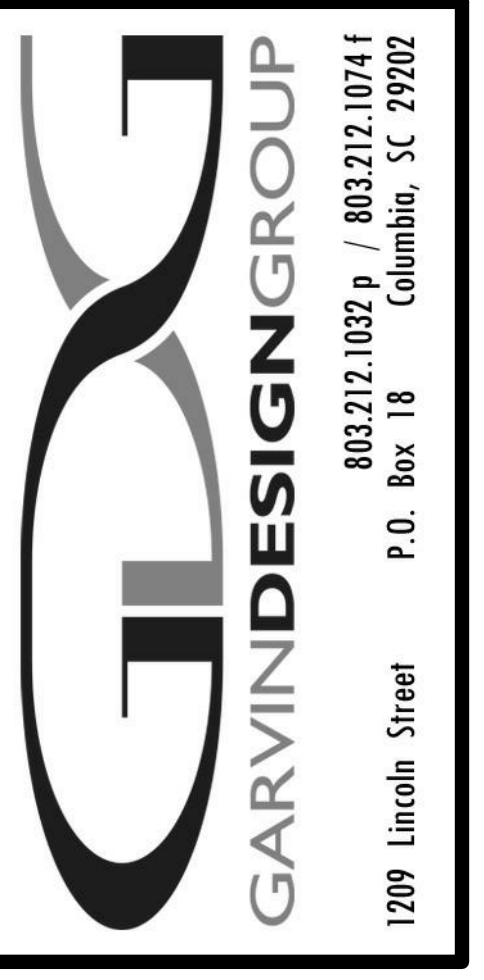


2 SECTION - LOWER LEVEL CANOPY AT WALL
 A1.1B 1 1/2" = 1'-0"
 REFERENCED: A1.1A

3 SECTION - LOWER LEVEL SIGNAGE PANELS
 A1.1B 1 1/2" = 1'-0"
 REFERENCED: A1.1A

GENERAL NOTES

1. DIMENSIONS INDICATED ON THESE DRAWINGS ARE TO FACE OF WALL, FACE OF CURTAINWALL OR CENTERLINE OF STRUCTURAL MEMBER UNLESS OTHERWISE INDICATED. COORDINATE ALL DIMENSIONS WITH ENLARGED PLANS, SECTION AND DETAIL DRAWINGS, AND STRUCTURAL DRAWINGS AND VERIFY EXACT LOCATIONS. REPORT ANY DIMENSIONAL OR PHYSICAL DISCREPANCIES TO ARCHITECT BEFORE PROCEEDING WITH THE WORK.
2. CONTACT OWNER UPON DISCOVERY OF ANY SUSPECTED ASBESTOS-CONTAINING MATERIALS OR OTHER SUSPECTED HAZARDOUS MATERIALS NOT SHOWN TO BE REMOVED WITHIN THE PROJECT SCOPE.
3. TURN OVER DEMOLISHED MATERIAL AND EQUIPMENT TO OWNER UNLESS NOTED OTHERWISE.
4. REFERENCE STRUCTURAL DRAWINGS FOR FULL EXTENT OF STRUCTURAL WORK.
5. REFERENCE ELECTRICAL DRAWINGS FOR FULL EXTENT OF ELECTRICAL WORK.
6. ILLUMINATED INDIVIDUAL SIGN LETTERS, BLOCK 'C' LOGO, SIGNAGE POWER SUPPLIES AND LOW-VOLTAGE WIRING FROM POWER SUPPLIES TO SIGNAGE ARE NOT A PART OF THIS SCOPE OF WORK, BUT WILL BE BID AND INSTALLED UNDER SEPARATE CONTRACT. REFERENCE SIGNAGE BID DOCUMENTS TO BE PROVIDED BY OWNER TO BE COORDINATED WITH SCOPE OF WORK INDICATED IN THESE DOCUMENTS. GENERAL CONTRACTOR IS RESPONSIBLE FOR FULL COORDINATION BETWEEN THESE DOCUMENTS AND SIGNAGE SCOPE OF WORK TO PROVIDE FOR THE COMPLETE FINAL INSTALLATION.
7. CONTRACTOR TO PROVIDE ALL NECESSARY BLOCKING FOR SIGNAGE COMPONENTS INCLUDING ACM PANELS, CANOPIES, ILLUMINATED LETTERS AND BLOCK 'C'S AS REQUIRED.
8. ALTERNATE NO. 1 INCLUDES ALL SCOPE RELATED TO DEMOLITION AND DISPOSAL OF EXISTING UPPER LEVEL ALUM. CANOPY STRUCTURE IN ITS ENTIRETY INCLUDING ROOFING, FLASHING, FRAMING, CABLES, CONNECTIONS, ETC. REPAIR OF REMAINING HOLES OR DAMAGE THAT WOULD REMAIN VISIBLE, AND ADDITION OF NEW GLASS CANOPY AND HARDWARE.



PROJECT TITLE
ATHLETICS PRACTICE FACILITY - MODIFY ENTRANCES
 USC Project Number: #50003163
 ATHLETIC PRACTICE FACILITY
 1001 BLOSSOM ST.
 COLUMBIA, SC 29208

NO.	REVISIONS	NAME	DATE

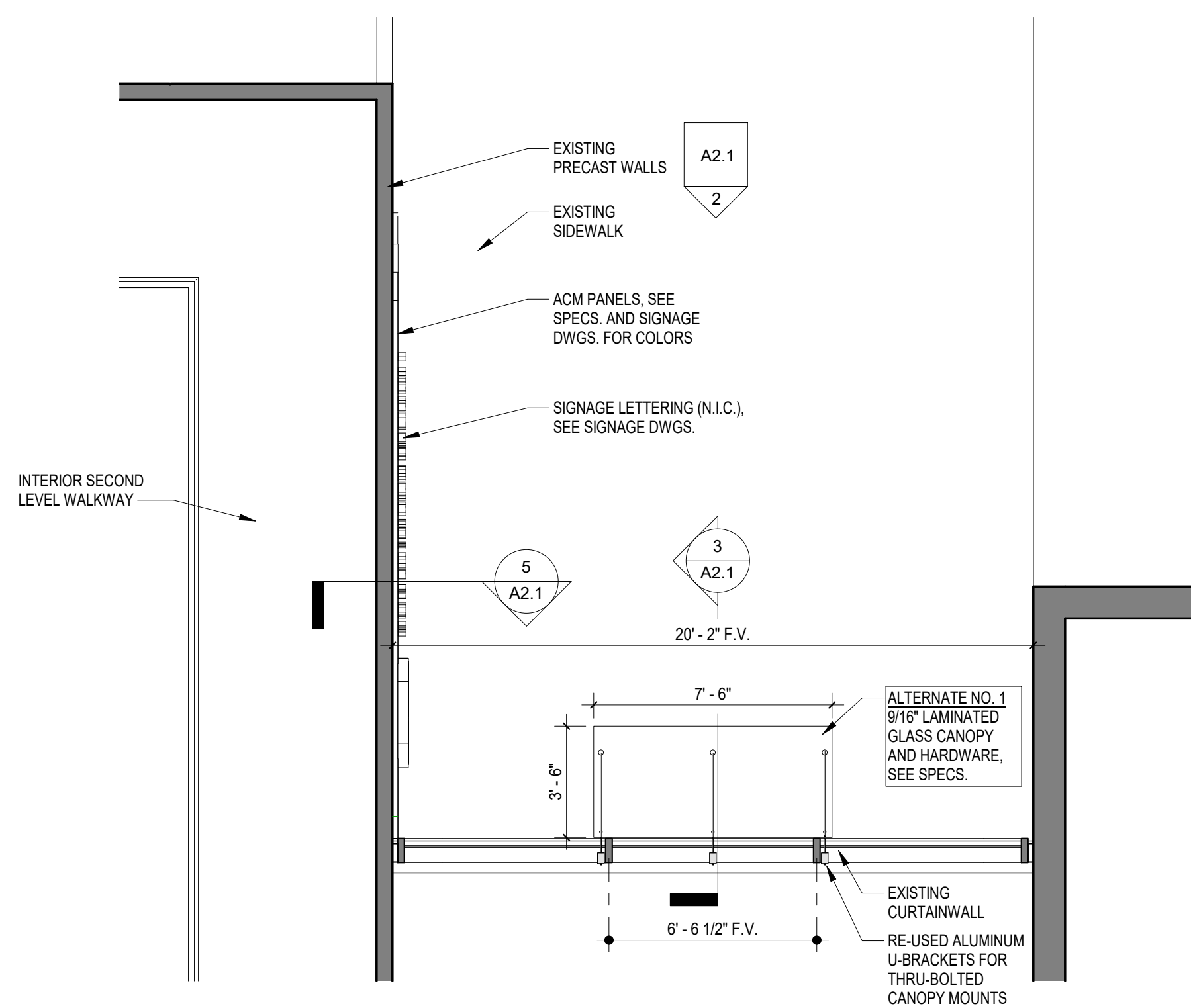
DRAWN BY:	AUT/2	CHECKED BY:	
<small>THESE DRAWINGS ARE THE PROPERTY OF GARVIN DESIGN GROUP, INC. NO PART OF THESE DRAWINGS IS TO BE REPRODUCED OR TRANSMITTED IN ANY FORM OR BY ANY MEANS, ELECTRONIC OR MECHANICAL, WITHOUT THE WRITTEN CONSENT OF GARVIN DESIGN GROUP, INC. ANY UNAUTHORIZED REPRODUCTION OR TRANSMISSION IS STRICTLY PROHIBITED AND WILL BE PROSECUTED TO THE FULL EXTENT OF THE LAW.</small>			

DRAWING TITLE
LOWER LEVEL SECTIONS

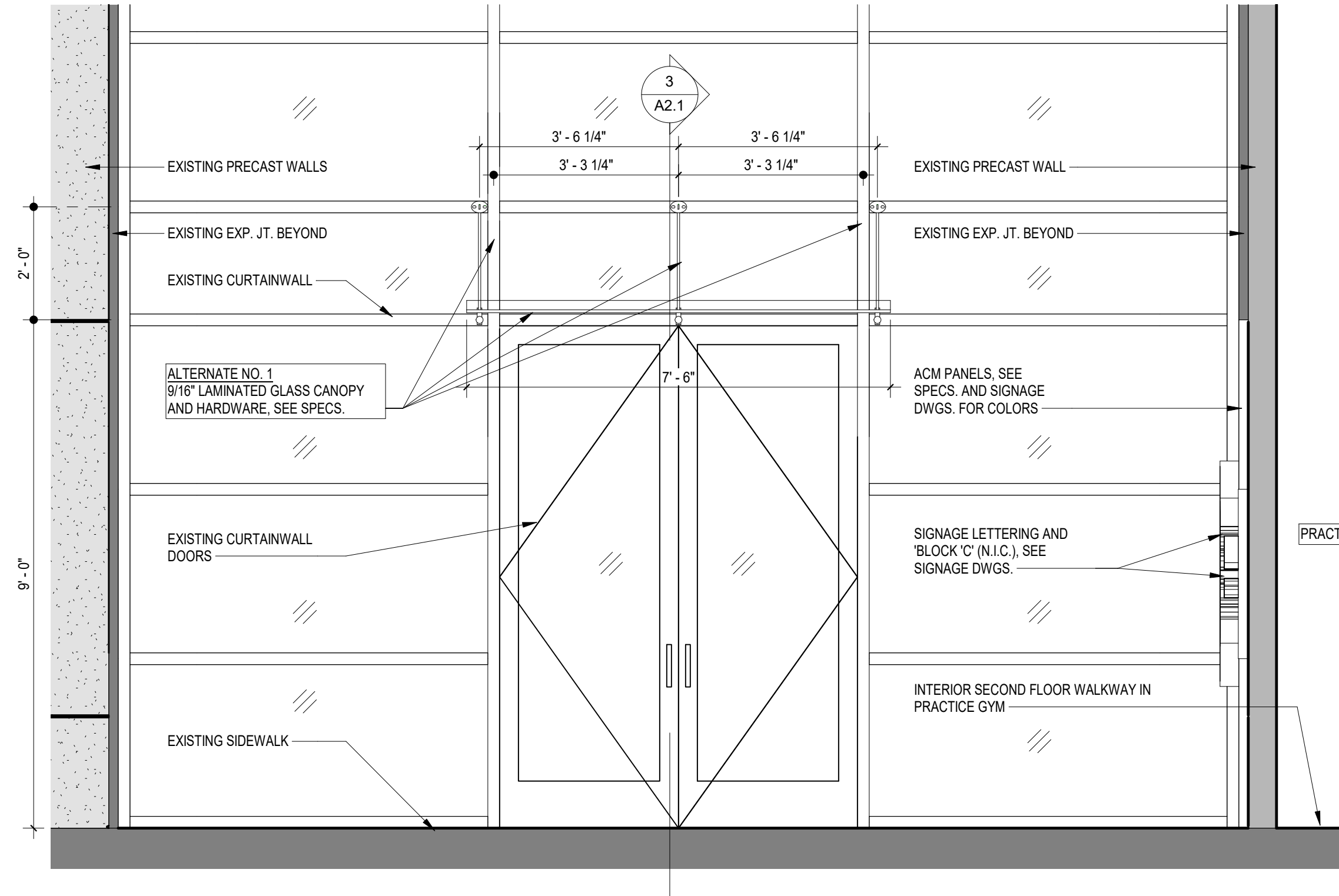
PROJECT NO.
 UM43.1B

DATE
 05.25.17

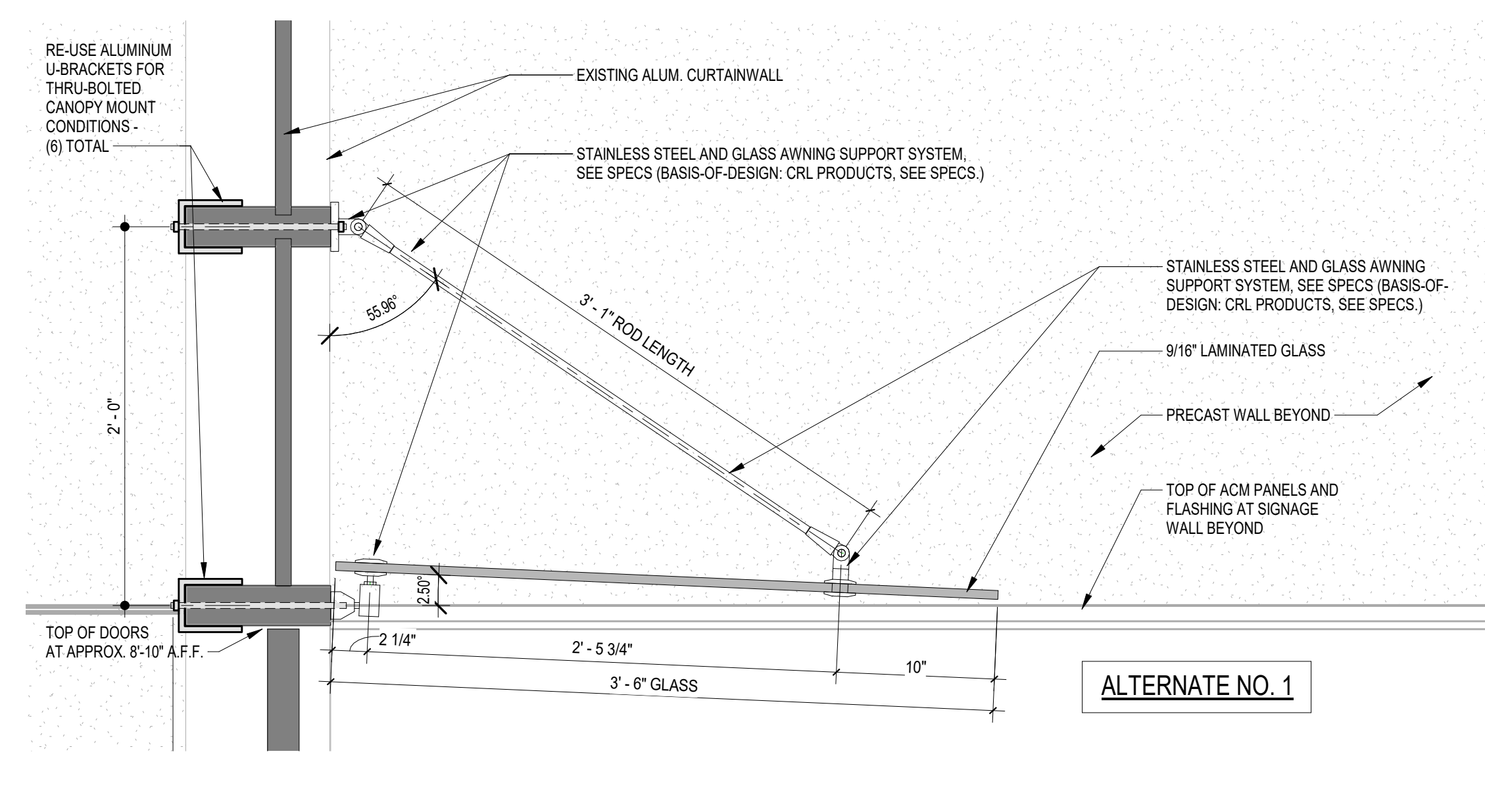
DRAWING NO.
A1.1B



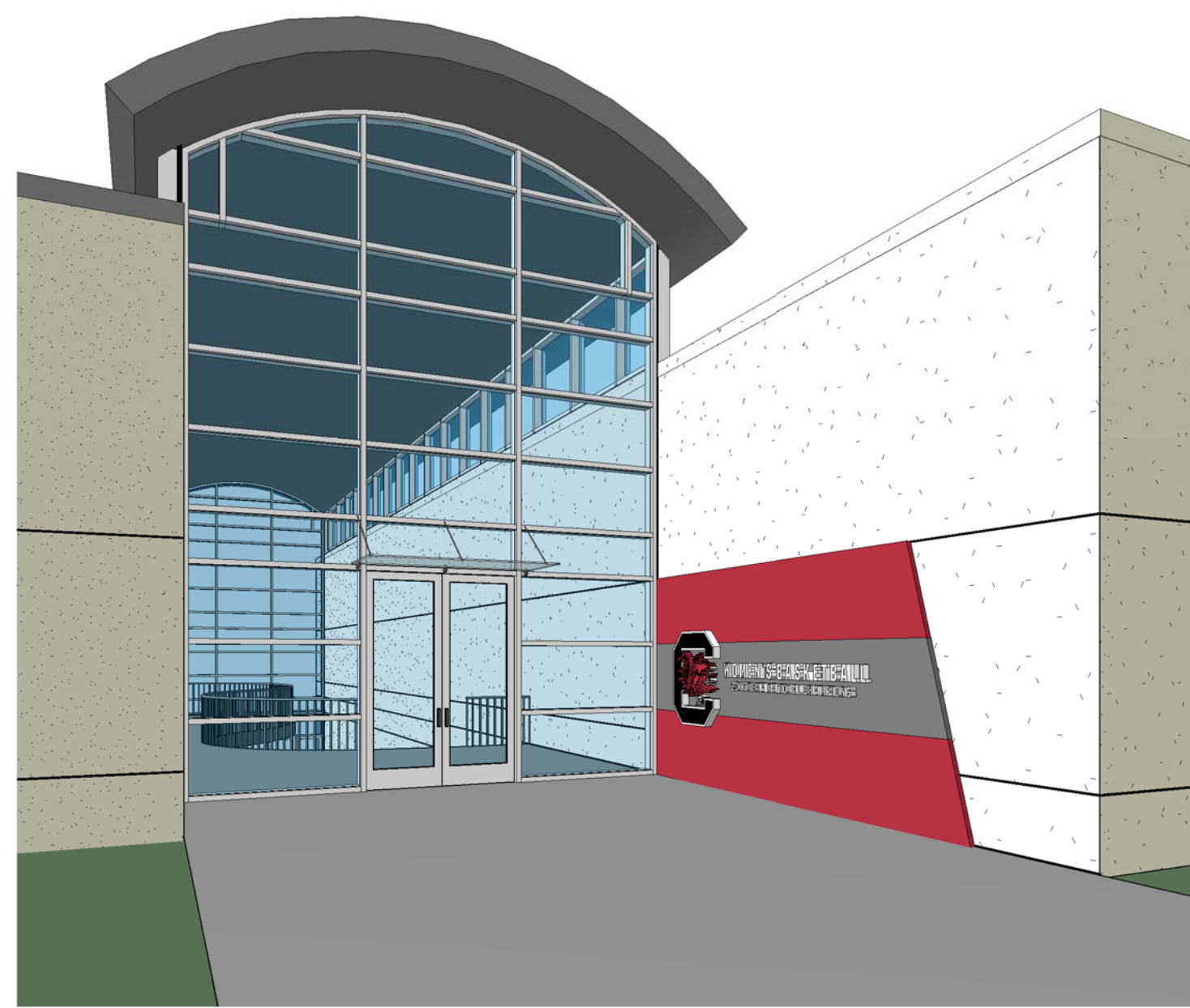
1 UPPER LEVEL FLOOR PLAN
A2.1 1/4" = 1'-0"
REFERENCED: A1.1A
OK



2 ELEVATION EAST UPPER LEVEL
A2.1 1/2" = 1'-0"
REFERENCED: A1.0
OK



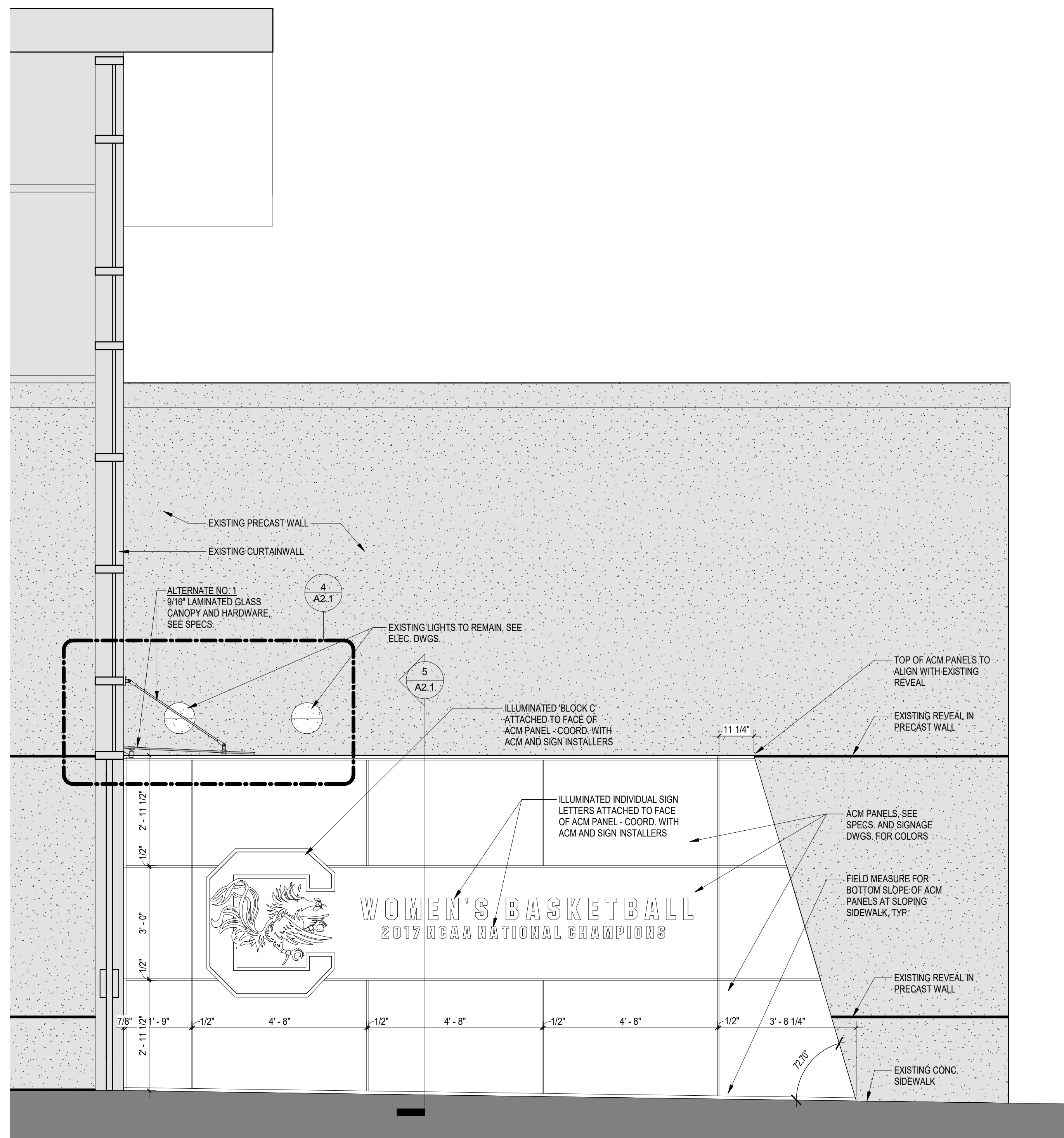
4 ALTERNATE NO. 1 - GLASS CANOPY SECTION
A2.1 1 1/2" = 1'-0"
REFERENCED: A2.1
OK



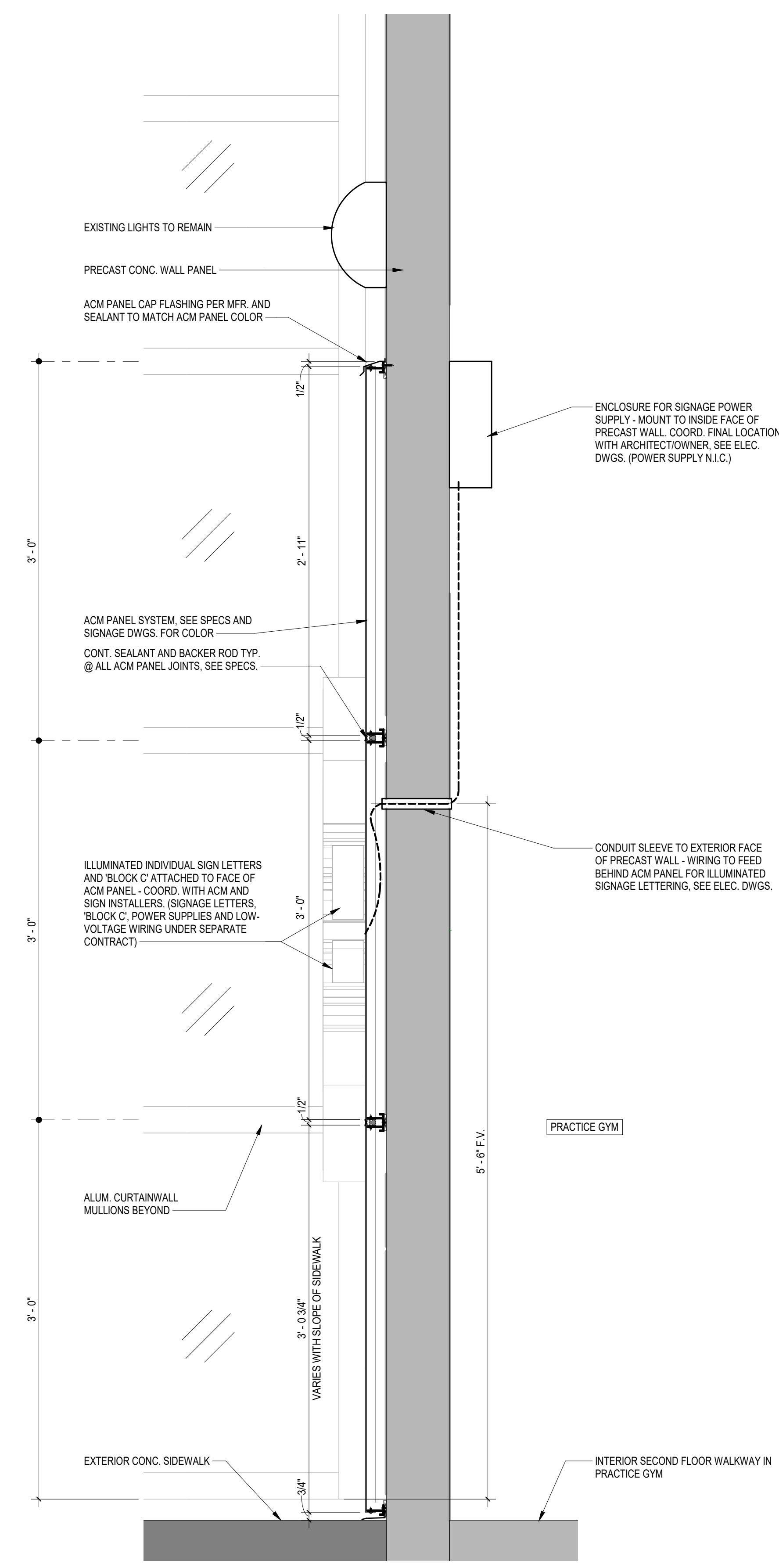
6 3D VIEW AT UPPER ENTRY
A2.1
OK

GENERAL NOTES

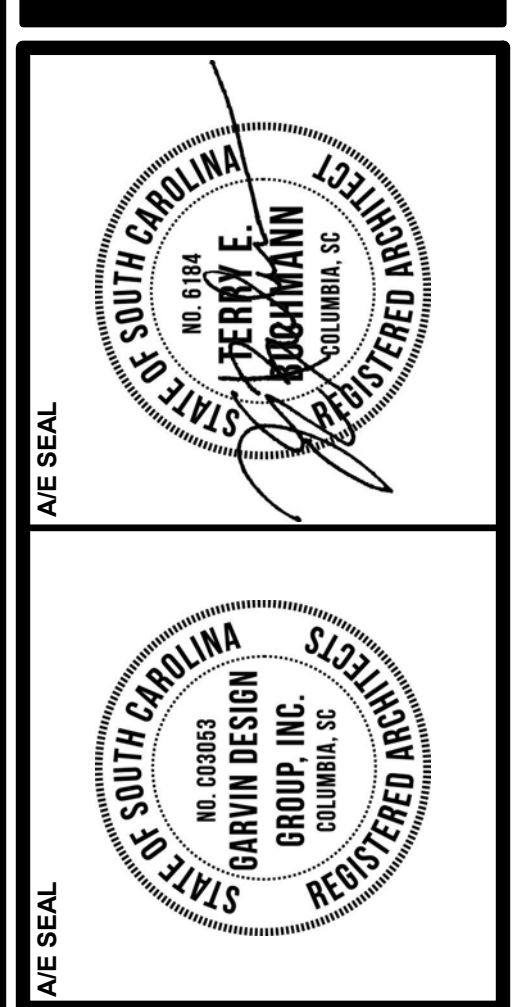
- DIMENSIONS INDICATED ON THESE DRAWINGS ARE TO FACE OF WALL, FACE OF CURTAINWALL, OR CENTERLINE OF STRUCTURAL MEMBER UNLESS OTHERWISE INDICATED. COORDINATE ALL DIMENSIONS WITH ENLARGED PLANS, SECTION AND DETAIL DRAWINGS, AND STRUCTURAL DRAWINGS AND VERIFY EXACT LOCATIONS. REPORT ANY DIMENSIONAL OR PHYSICAL DISCREPANCIES TO ARCHITECT BEFORE PROCEEDING WITH THE WORK.
- CONTACT OWNER UPON DISCOVERY OF ANY SUSPECTED ASBESTOS-CONTAINING MATERIALS OR OTHER SUSPECTED HAZARDOUS MATERIALS NOT SHOWN TO BE REMOVED WITHIN THE PROJECT SCOPE.
- TURN OVER DEMOLISHED MATERIAL AND EQUIPMENT TO OWNER UNLESS NOTED OTHERWISE.
- REFERENCE STRUCTURAL DRAWINGS FOR FULL EXTENT OF STRUCTURAL WORK.
- REFERENCE ELECTRICAL DRAWINGS FOR FULL EXTENT OF ELECTRICAL WORK.
- ILLUMINATED INDIVIDUAL SIGN LETTERS, 'BLOCK C' LOGO, SIGNAGE POWER SUPPLIES AND LOW-VOLTAGE WIRING FROM POWER SUPPLIES TO SIGNAGE ARE NOT A PART OF THIS SCOPE OF WORK, BUT WILL BE BID AND INSTALLED UNDER SEPARATE CONTRACT. REFERENCE SIGNAGE BID DOCUMENTS TO BE PROVIDED BY OWNER TO BE COORDINATED WITH SCOPE OF WORK INDICATED IN THESE DOCUMENTS. GENERAL CONTRACTOR IS RESPONSIBLE FOR FULL COORDINATION BETWEEN THESE DOCUMENTS AND SIGNAGE SCOPE OF WORK TO PROVIDE FOR THE COMPLETE FINAL INSTALLATION.
- CONTRACTOR TO PROVIDE ALL NECESSARY BLOCKING FOR SIGNAGE COMPONENTS INCLUDING ACM PANELS, CANOPIES, ILLUMINATED LETTERS AND BLOCK C'S AS REQUIRED.
- ALTERNATE NO. 1 INCLUDES ALL SCOPE RELATED TO DEMOLITION AND DISPOSAL OF EXISTING UPPER LEVEL ALUM. CANOPY STRUCTURE IN ITS ENTIRETY INCLUDING ROOFING, FLASHING, FRAMING, CABLES, CONNECTIONS, ETC., REPAIR OF REMAINING HOLES OR DAMAGE THAT WOULD REMAIN VISIBLE, AND ADDITION OF NEW GLASS CANOPY AND HARDWARE.



3 SECTION/ELEVATION - UPPER LEVEL
A2.1 1/2" = 1'-0"
REFERENCED: A2.1
OK



5 SECTION AT ACM PANEL SIGNAGE
A2.1 1 1/2" = 1'-0"
REFERENCED: A2.1
OK



PROJECT TITLE
ATHLETICS PRACTICE FACILITY -
MODIFY ENTRANCES
USC Project Number: #50003163
ATHLETIC PRACTICE FACILITY
1001 BLOSSOM ST.
COLUMBIA, SC 29208

NO.	REVISIONS	NAME	DATE

DRAWN BY: A/MLZ
CHECKED BY: [Signature]
THIS DRAWING AND THE DESIGN INFORMATION CONTAINED HEREIN ARE THE PROPERTY OF GARVIN DESIGN GROUP, INC. AND ARE NOT TO BE REPRODUCED OR TRANSMITTED IN ANY FORM OR BY ANY MEANS, ELECTRONIC OR MECHANICAL, INCLUDING PHOTOCOPYING, RECORDING, OR BY ANY INFORMATION STORAGE AND RETRIEVAL SYSTEM, WITHOUT THE WRITTEN CONSENT OF GARVIN DESIGN GROUP, INC.

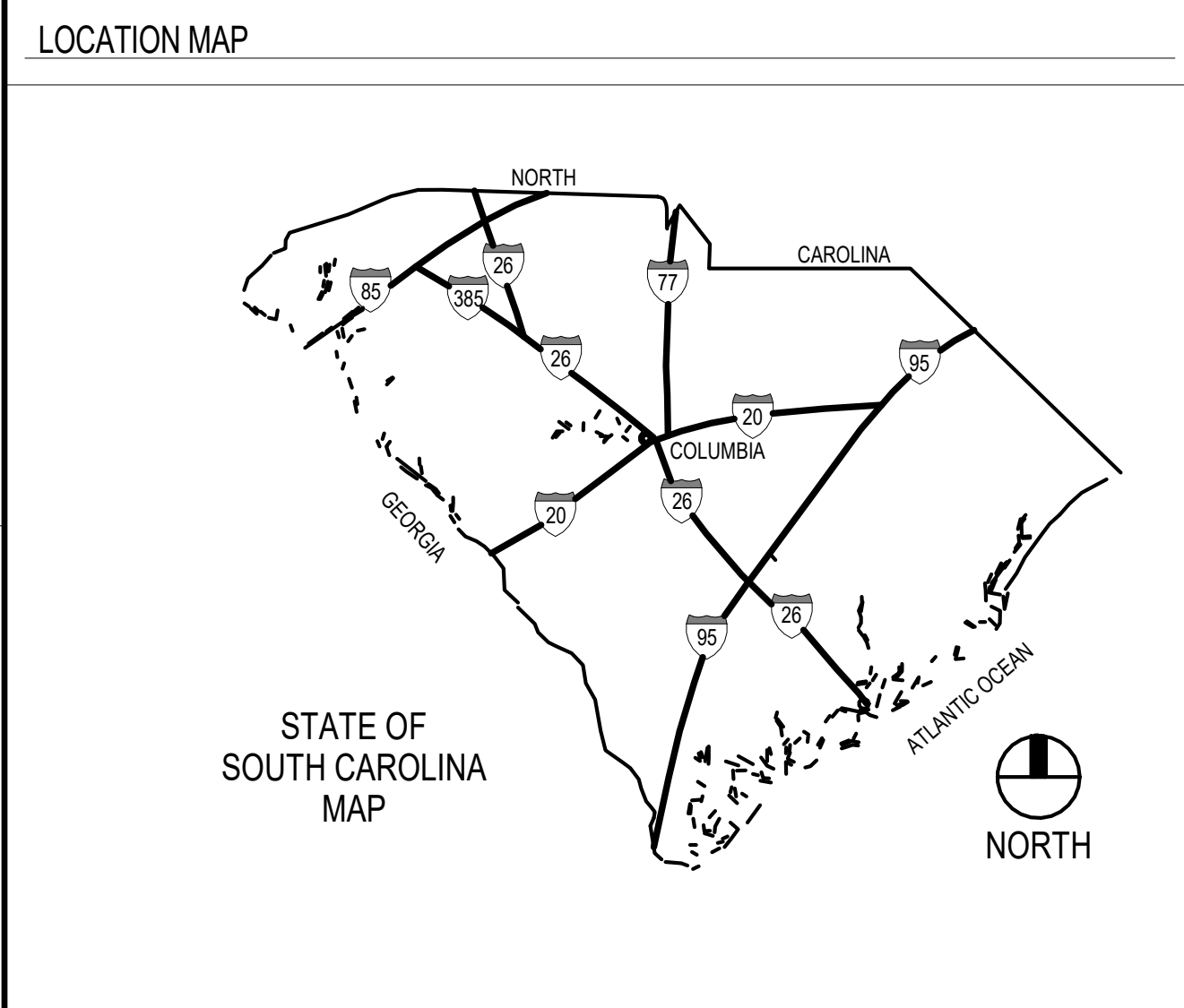
DRAWING TITLE
UPPER LEVEL DETAILS

UNIVERSITY OF SOUTH CAROLINA ATHLETICS PRACTICE FACILITY - MODIFY ENTRANCES

BID DOCUMENTS
25 MAY 2017

ATHLETIC PRACTICE FACILITY - 1001 BLOSSOM ST.
COLUMBIA, SOUTH CAROLINA 29208

USC Project Number: #50003163
Architect's Project Number: U443.16

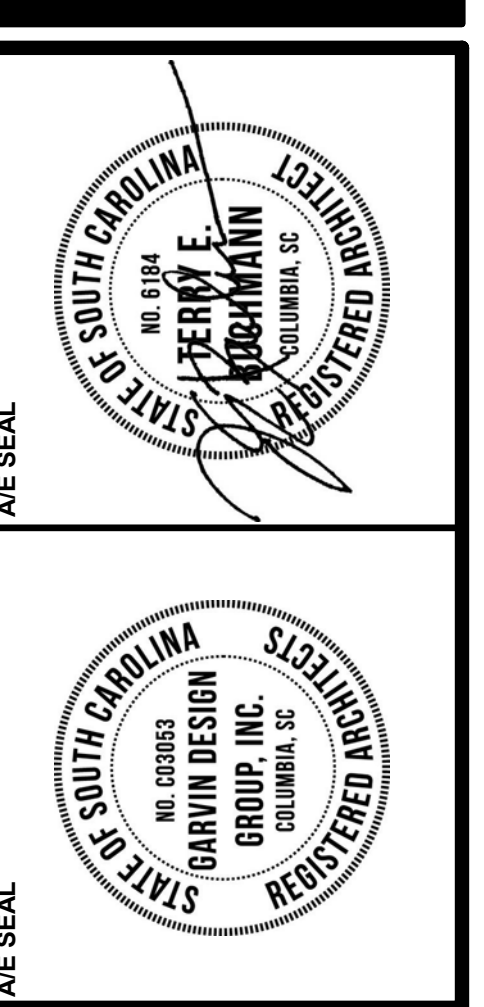
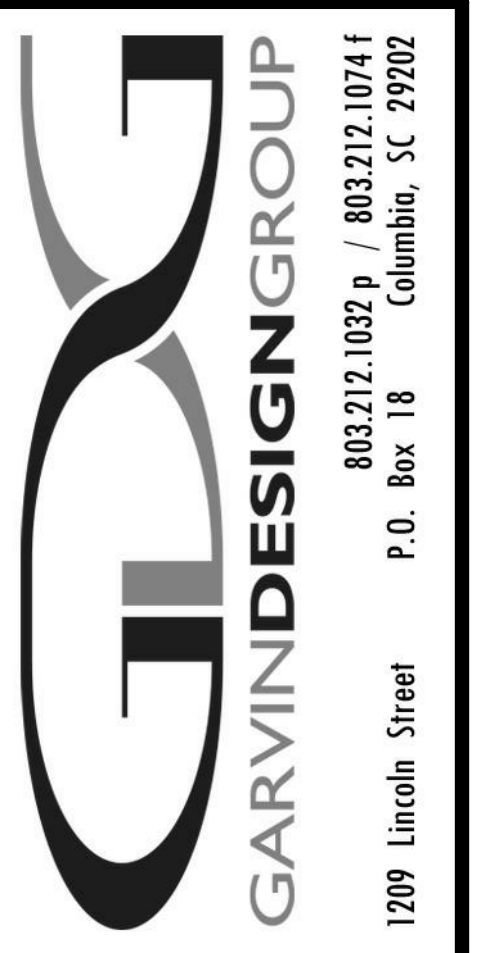


INDEX TO DRAWINGS	
TITLE SHEET	
T1.1	TITLE SHEET & INDEX TO DRAWINGS
ARCHITECTURAL	
A1.0	SITE REFERENCE PLANS AND DEMOLITION NOTES
A1.1A	COLISEUM AND LOWER LEVEL DETAILS
A1.1B	LOWER LEVEL SECTIONS
A2.1	UPPER LEVEL DETAILS
STRUCTURAL	
S1.1	LOWER LEVEL CANOPY - FRAMING PLAN, DETAILS AND NOTES
ELECTRICAL	
E1.0	OVERALL ELECTRICAL PLANS
E2.0	ENLARGED ELECTRICAL PLANS

MATERIAL DESIGNATIONS	
	COMPACTED EARTH
	POROUS FILL (STONE OR GRAVEL)
	CONCRETE
	CONCRETE MASONRY UNIT (CMU)
	BRICK
	SAND, PLASTER, CEMENT, GROUT
	STEEL
	WOOD (ROUGH)
	WOOD (FINISHED)
	PLYWOOD
	BATT INSULATION
	GYPSUM BOARD
	RIGID INSULATION

ABBREVIATIONS	
∠	ANGLE
@	ABOVE FINISH FLOOR
ALUM	ALUMINUM
ARCH	ARCHITECTURAL
BLKG	BLOCKING
BU	BUILT-UP ROOF
CL	CENTERLINE
CLG	CENTRAL LINE
CLJ	CENTRAL JOINT
CTR	CENTER
CONC	CONCRETE
CMU	CONCRETE MASONRY UNIT
CONT	CONTINUOUS
DA	DIAMETER
DS	DOWN SPOUT
DWG	DRAWING
EXT	EXTERIOR
EXIST	EXISTING
EA	EACH
EJ	EXPANSION JOINT
ELEC	ELECTRICAL
EL	ELEVATION
ELEV	ELEVATOR
EQUIP	EQUIPMENT
EWC	ELECTRIC WATER COOLER
FIN	FINISH
FD	FLOOR DRAIN
FOF	FACE OF FINISH
FOS	FACE OF STUD
FR	FIRE RETARDANT
FV	FIELD VERIFY
GA	GAUGE
GYP	GYPSUM BOARD
HM	HOLLOW METAL
HORIZ	HORIZONTAL
HT	HEIGHT
HVAC	HEATING VENTILATION AIR-CONDITIONING
ID	INSIDE DIAMETER
INSUL	INSULATION
JT	JOINT
LAV	LAVATORY
LAV	LAVATORY
MAX	MAXIMUM
MECH	MECHANICAL
MFR	MANUFACTURER
MFR	MINIMUM
MN	MASONRY OPENING
MO	NOT IN CONTRACT
NIC	NOMINAL
NOM	NOT TO SCALE
NTS	NOT TO SCALE
OC	ON CENTER
OC	OUTSIDE DIAMETER
OP	OPENING
OPNG	OPPOSITE
OPP	OPPOSITE
P	PAINT
PR	PLATE, PROPERTY LINE
PL	PRESSURE TREATED
PT	RADIUS
R	REQUIRED
REQD	REQUIRED
ROD	ROUGH OPENING
RD	ROUGH OPENING
RD	SQUARE FEET
SF	SQUARE FEET
SF	SIMILAR
SM	SPECIFICATIONS
SPEC	SPECIFICATIONS
SS	STANDARD
STD	STANDARD
STR	STRUCTURAL
SUSP	SUSPENDED
SUSP	TOP OF STEEL
TOW	TOP OF WALL
TYP	TYPICAL
UNO	UNLESS NOTED OTHERWISE
VERT	VERTICAL
VCT	VINYL COMPOSITION TILE
VCT	VINYL COMPOSITION TILE
W	WITH
WC	WATER CLOSET
WR	WATER RESISTANT
WF	WELDED WIRE FABRIC
WD	WOOD

ARCHITECTURAL SYMBOLS	
	TITLE SCALE: 1'-0" = 1'-0" DETAIL NUMBER WHERE DETAIL IS SHOWN
	PLAN DETAIL REFERENCE DETAIL NUMBER WHERE DETAIL IS SHOWN
	WALL SECTION / DETAIL SECTION REFERENCE WALL SECTION / DETAIL NUMBER WHERE WALL SECTION / DETAIL IS SHOWN
	ROOM TAG SYMBOL ROOM NAME ROOM NUMBER
	DOOR SYMBOL DOOR NUMBER FRAME TYPE DOOR TYPE
	13'-4" DIMENSION TO FACE OR EDGE 13'-4" DIMENSION TO CENTERLINE EL 14'-0" FIN FLOOR ELEVATION ABOVE SEA LEVEL ITEM IDENTIFIED
	WINDOW / STOREFRONT / CURTAIN WALL / LOUVER TYPE PARTITION TYPE
	FIRE EXTINGUISHER RECESSED IN WALL CABINET FIRE EXTINGUISHER MOUNTED ON WALL BRACKETS FD - FLOOR DRAIN
	BUILDING SECTION REFERENCE BUILDING SECTION NUMBER WHERE BUILDING SECTION IS SHOWN
	ALTERNATE WALL SECTION REFERENCE WALL SECTION / DETAIL NUMBER WHERE WALL SECTION / DETAIL IS SHOWN TOP = TOP HALF OF WALL FOR PARTICULAR LEVEL BOT = BOTTOM HALF OF WALL FOR PARTICULAR LEVEL
	FIRE RATED WALL SYMBOLS ONE-HOUR FIRE-RATED WALL ASSEMBLY TWO-HOUR FIRE-RATED WALL ASSEMBLY FOUR-HOUR FIRE-RATED WALL ASSEMBLY SEE PARTITION TYPES FOR UL DESIGN NOS.
	REVISION SYMBOL CLOUD AROUND REVISION
	EXPANSION JOINT TYPE
	BRICK VENEER / CMU CONTROL JOINT
	TOILET / LOCKER ROOM ACCESSORY SYMBOL
	GYPSUM BOARD CONTROL JOINT
	INDICATES A CHANGE IN ORIENTATION OF CUT PLANE (INTERIOR ELEVATION ONLY)
	EXTERIOR WALL / ROOF CONSTRUCTION TYPE



PROJECT TITLE
ATHLETICS PRACTICE FACILITY -
MODIFY ENTRANCES
USC Project Number: #50003163
ATHLETIC PRACTICE FACILITY
1001 BLOSSOM ST.
COLUMBIA, SC 29208

NO.	REVISIONS	NAME	DATE

DRAWN BY: TEB
CHECKED BY: TEB
THIS DRAWING AND THE DESIGN IT REPRESENTS ARE THE PROPERTY OF GARVIN DESIGN GROUP, INC. NO PART OF THIS DRAWING OR DESIGN IS TO BE REPRODUCED OR TRANSMITTED IN ANY FORM OR BY ANY MEANS, ELECTRONIC OR MECHANICAL, WITHOUT THE WRITTEN CONSENT OF GARVIN DESIGN GROUP, INC. © 2017 GARVIN DESIGN GROUP, INC.

DRAWING TITLE
TITLE SHEET & INDEX TO
DRAWINGS

PROJECT NO. U443.16
DATE 05.25.17
DRAWING NO. T1.1