

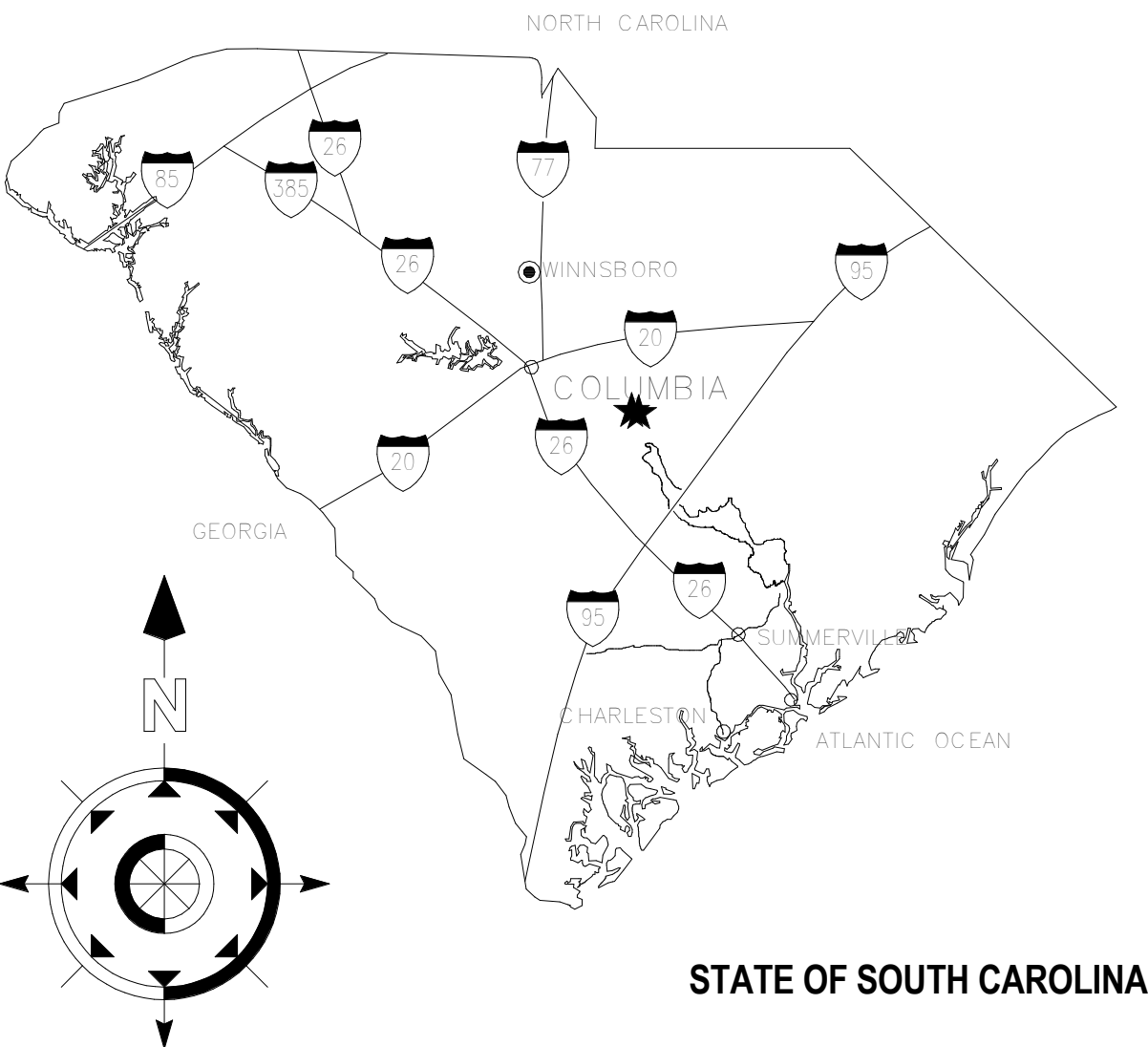
UNIVERSITY OF SOUTH CAROLINA  
TAYLOR HOUSE EXTERIOR REPAIRS

CONSTRUCTION DOCUMENTS  
02.10.17

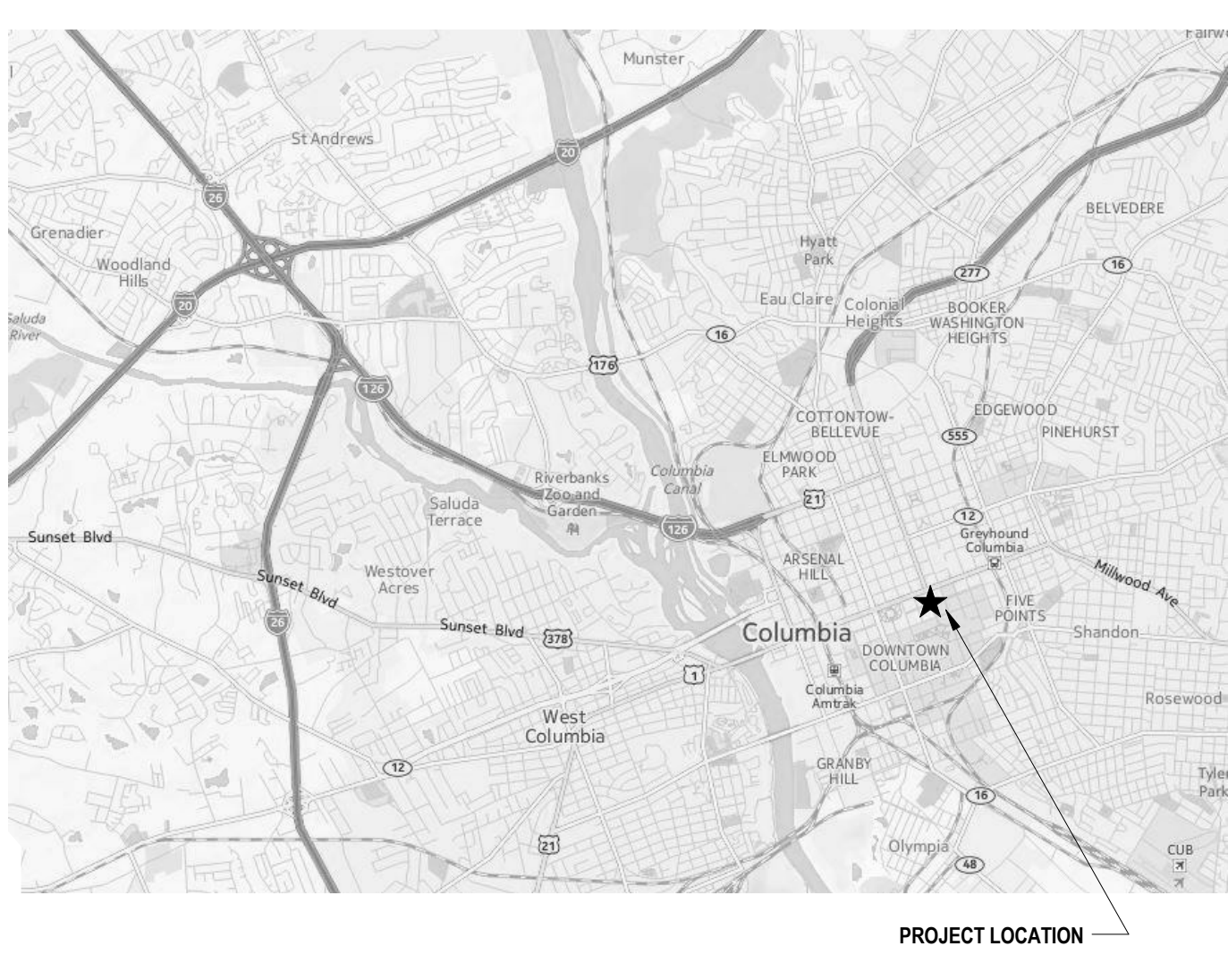
STATE PROJECT NO: H27-Z219-A  
PROJECT NO: U-839-16-2

The Boudreaux Group  
1330 Lady St., Suite 600 (9900)  
P.O. Box 5956  
Columbia, SC 29950  
(803) 799-4477  
info@boudreauxgroup.com  
Interdisciplinary Design Architecture Interiors Planning

STATE LOCATION MAP



VICINITY LOCATION MAP



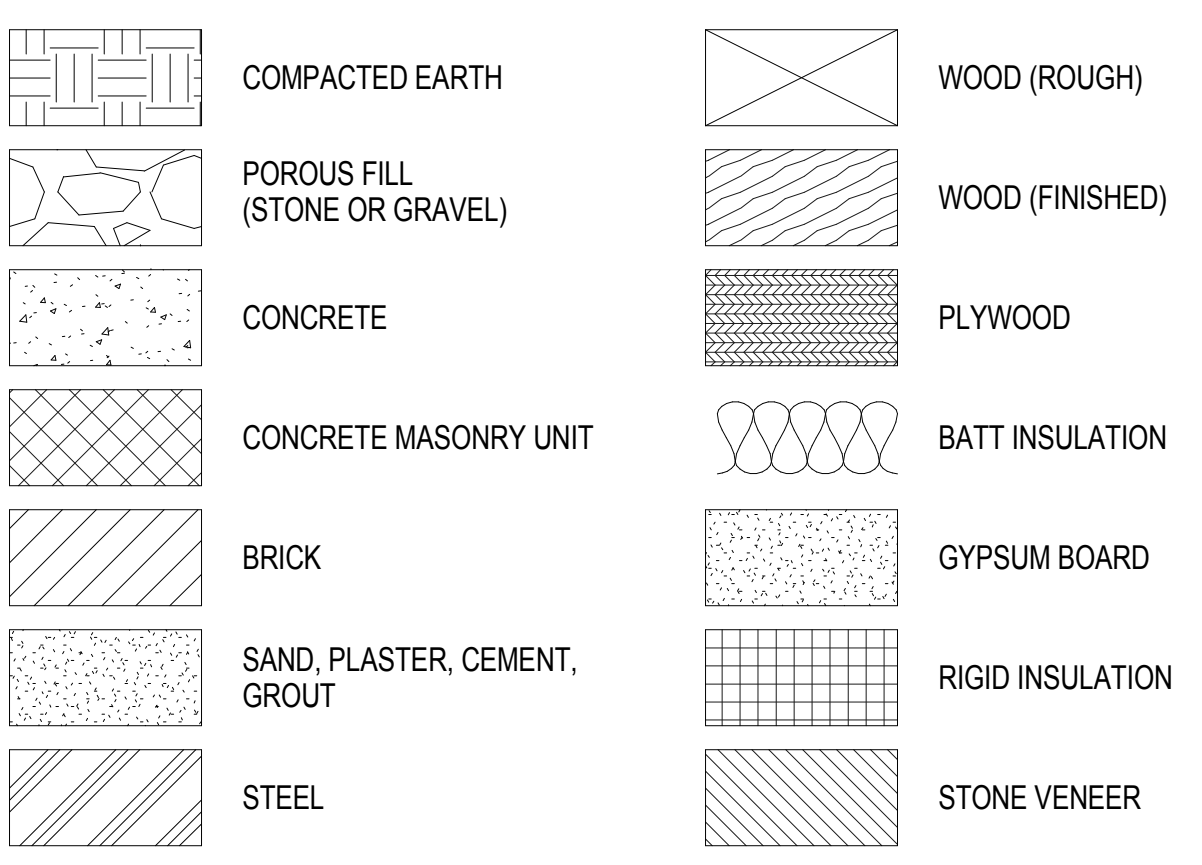
APPLICABLE CODES

- PROJECTS DESIGNED IN ACCORDANCE WITH THE FOLLOWING CODES
- 1 INTERNATIONAL BUILDING CODE, 2015 EDITION
  - 2 INTERNATIONAL EXISTING BUILDING CODE, 2015 EDITION
  - 3 INTERNATIONAL FIRE CODE, 2015 EDITION
  - 4 INTERNATIONAL ENERGY CONSERVATION CODE, 2009 EDITION
  - 5 INTERNATIONAL FUEL GAS CODE, 2015 EDITION
  - 6 INTERNATIONAL MECHANICAL CODE, 2015 EDITION
  - 7 INTERNATIONAL PLUMBING CODE, 2015 EDITION, WITH THE FOLLOWING INSERTIONS:
    - a. SECTION 305.4.1, INSERT "18"
    - b. SECTION 903.1, INSERT "8"
  - 8 INTERNATIONAL PROPERTY MAINTENANCE CODE (IPSDC), 2015 EDITION
  - 9 INTERNATIONAL WILDLAND - URBAN INTERFACE CODE (IUWIC), 2012 EDITION
  - 10 INTERNATIONAL CODE COUNCIL PERFORMANCE CODE (ICCOC) 2012, UPON BUILDING OFFICIAL'S APPROVAL.
  - 11 NATIONAL ELECTRICAL CODE, NFPA 70, 2014 EDITION
  - 12 NATIONAL ELECTRICAL SAFETY CODE, IEEE-C2-1012 EDITION
  - 13 LATEST EDITION OF ANSI A117.1, ACCESSIBLE AND USEABLE BUILDINGS AND FACILITIES AND AMERICANS WITH DISABILITIES ACT ACCESSIBILITY GUIDELINES FOR BUILDINGS AND FACILITIES. SEE: <http://www.access-board.gov/guidelines-and-standards/buildings-and-sites/about-the-ada-standards/ada-standards>
  - 14 STATE FIRE MARSHAL'S RULES, REGULATIONS AND POLICIES. SEE <http://www.scfiremarshal.lrlonline.com>
  - 15 SOUTH CAROLINA ELEVATOR CODE AND REGULATIONS, LATEST EDITION, INCLUDING REFERENCED AMERICAN SOCIETY OF MECHANICAL ENGINEERS SAFETY CODE FOR ELEVATORS, DUMBWAITERS, ESCALATORS, AND MOVING WALKS, AND SUPPLEMENTS THERETO ASME A17.1. SEE <http://www.lrl.state.sc.us/Labor/ElevatorAmusement/index.asp?file=bungee.htm>
  - 16 STATE OF SC TELEPHONE EQUIPMENT ROOM AND COMMUNICATIONS/DATA SYSTEMS POLICIES AS FORMULATED BY THE DIVISION OF STATE INFORMATION TECHNOLOGY (DSIT).
  - 17 GOVERNOR'S EXECUTIVE ORDER NO. 82-19 (APRIL 1982) - STATE OF SC BUILDING STANDARDS IN FLOODPLAIN AREAS.

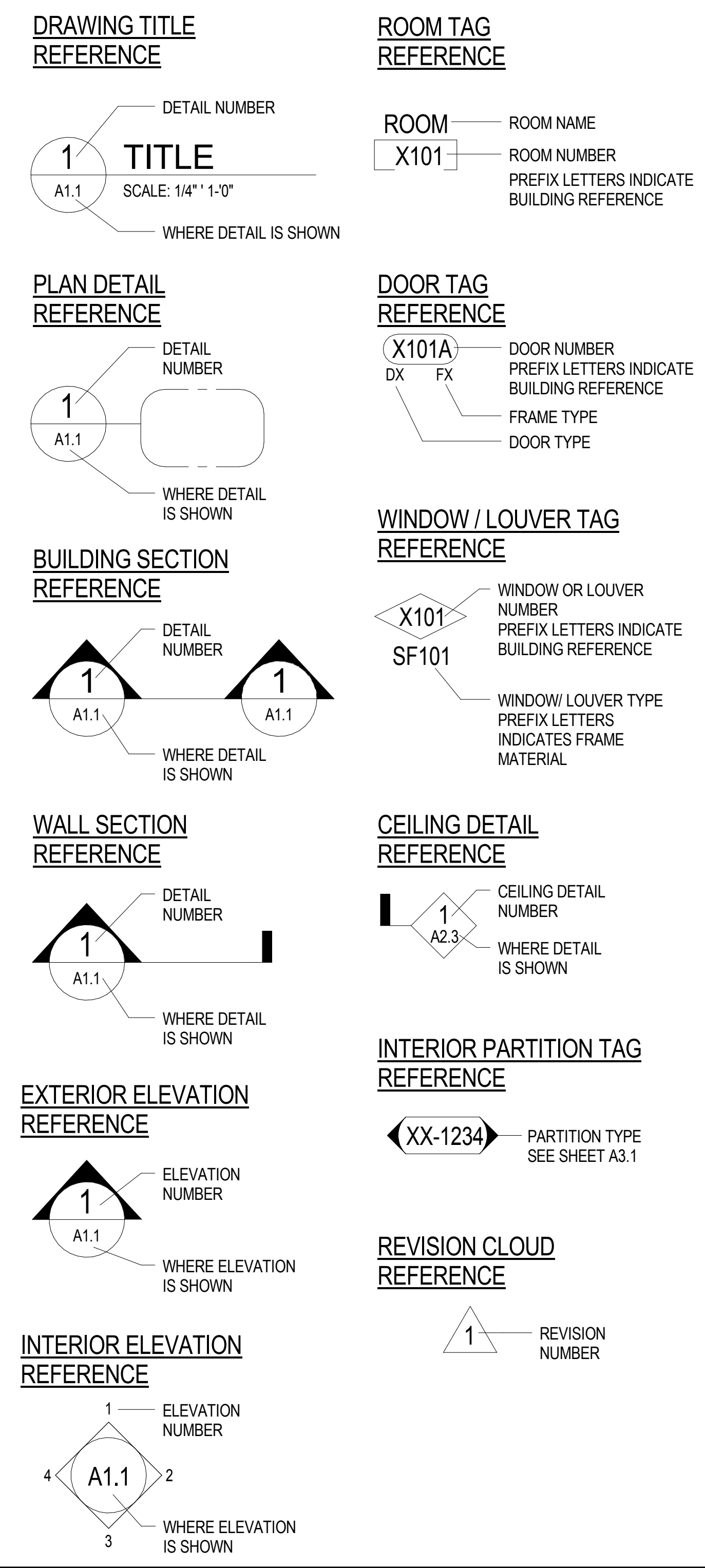
INDEX OF DRAWINGS

- |      |  |
|------|--|
| T1.1 | TITLE SHEET, INDEX OF DRAWINGS, LIST OF APPLICABLE CODES |
| A1.1 | TAYLOR HOUSE ELEVATIONS AND ROOF PLAN                    |
| A2.1 | ROOF DETAILS   |
| A2.2 | ROOF SECTIONS AND DETAILS                                |

MATERIAL DESIGNATIONS



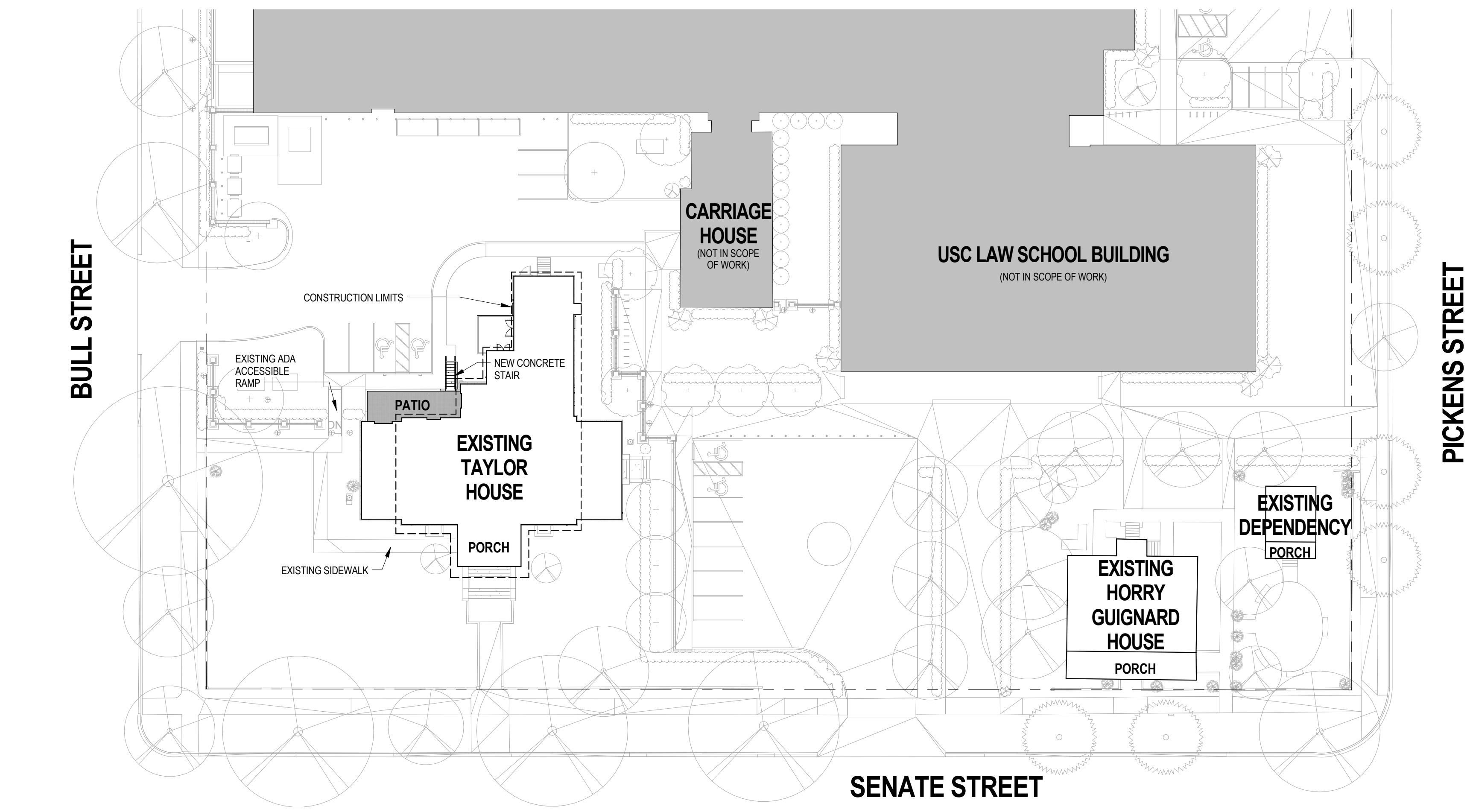
ARCHITECTURAL SYMBOLS



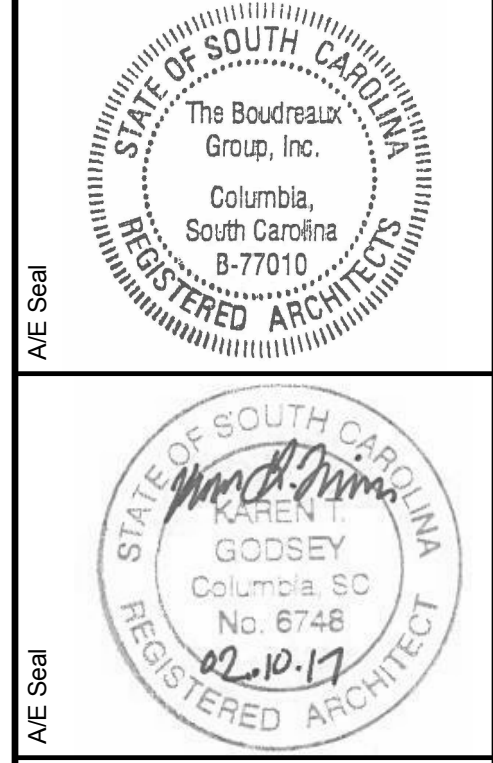
ABBREVIATIONS

@	AT	MAX	MAXIMUM
AFF	ABOVE FINISH FLOOR	MECH	MECHANICAL
ALUM	ALUMINUM	MFR	MANUFACTURER
ARCH	ARCHITECTURAL	MIN	MINIMUM
BLKG	BLOCKING	MO	MASONRY OPENING
CFCI	CONTRACTOR FURNISHED, CONTRACTOR INSTALLED	NIC	NOT IN CONTRACT
CJ	CONTRACTOR FURNISHED, CONTRACTOR INSTALLED	NOM	NOMINAL
CL	CONTROL JOINT	NTS	NOT TO SCALE
CLG	CENTER LINE	OC	ON CENTER
CMU	CEILING	OD	OUTSIDE DIAMETER
CONC	CONCRETE MASONRY UNIT	OFCI	OWNER FURNISHED, CONTRACTOR INSTALLED
CONT	CONCRETE	OFOI	OWNER FURNISHED, OWNER INSTALLED
CTR	CONTINUOUS	OPNG	OPENING
DIA	CENTER	OPP	OPPOSITE
DS	DIAMETER	P	PAINT
DWG	DOWNSPOUT	PL	PLATE, PROPERTY LINE
EA	DRAWING	PR	PAIR
EJ	EACH	PREFIN	PREFINISHED
ELEC	EXPANSION JOINT	R, RAD	RADIUS
ELEV	ELEVATION	RD	ROOF DRAIN
ELEV	ELECTRICAL	REQD	REQUIRED
EQUIP	ELEVATOR	RO	ROUGH OPENING
EW	EQUIPMENT	SF	SQUARE FEET
EW	ELECTRIC WATER COOLER	SIM	SIMILAR
EXIST	EXISTING	SPEC	SPECIFICATIONS
EXT	EXTERIOR	STD	STANDARD
FD	FLOOR DRAIN	STR	STRUCTURAL
FIN	FINISH	SUSP	SUSPENDED
FOF	FACE OF FINISH	TBD	TO BE DETERMINED
FOS	FACE OF STUD	TBS	TO BE SELECTED
FR	FIRE RETARDANT	TOP	TO OF PLATE
FV	FIELD VERIFY	TOS	TOP OF STEEL
GA	GAUGE	TYP	TYPICAL
GYP BD	GYP SUM BOARD	UNO	UNLESS NOTED OTHERWISE
HM	HOLLOW METAL	VCT	VINYL COMPOSITION TILE
HORIZ	HORIZONTAL	VERT	VERTICAL
HT	HEIGHT	W/	WITH
HVAC	HEATING VENTILATION AIR-CONDITIONING	WC	WATER CLOSET
ID	INSIDE DIAMETER	WD	WOOD
INSUL	INSULATION	WR	WATER RESISTANT
JT	JOINT	WWF	WELDED WIRE FABRIC
L	ANGLE		
LAV	LAVATORY		

- GENERAL NOTES:
1. COORDINATE WITH OWNER FOR LAYDOWN AREA LOCATIONS FOR INSTALLATION OF NEW TILE ROOF.
  2. CONTRACTOR TO PROTECT ALL ADJACENT WORK THAT IS EXISTING TO REMAIN FROM DAMAGE, INCLUDING ALL BUILDING FINISHES, LANDSCAPE MATERIAL, AND BRICK PAVERS.
  3. COORDINATE WITH CONTRACTORS ON SITE PERFORMING CONCURRENT WORK AND OWNER FOR ANY DELIVERIES REQUIRING CLOSING OF ACCESS DRIVES AND ANY INTERRUPTIONS TO UTILITY SERVICES.



1 SITE PLAN  
1" = 30'-0"



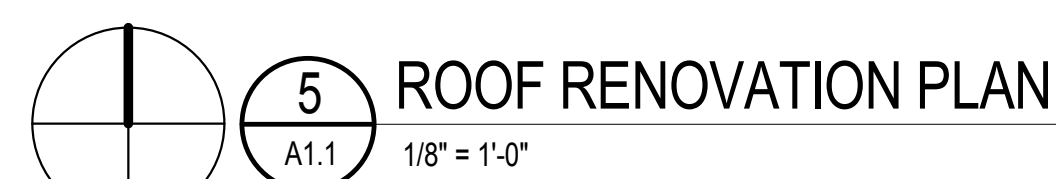
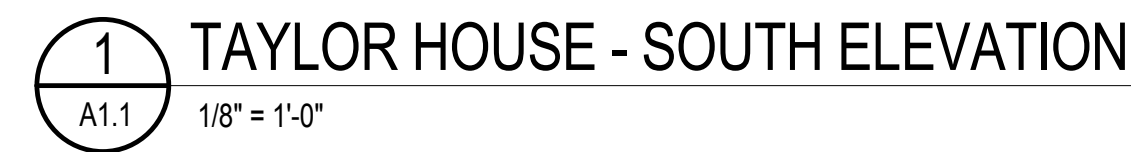
UNIVERSITY OF SOUTH CAROLINA  
TAYLOR HOUSE EXTERIOR REPAIRS  
COLUMBIA, SOUTH CAROLINA

No.	Description	Date	Project Number
			U-839-16-2
			Drawn By: JRF
			Checked By: KGO
			02.10.17

TITLE SHEET, INDEX OF  
DRAWINGS, LIST OF  
APPLICABLE CODES

Drawing No.  
T1.1





A1	2 PLY MEMBRANE ROOFING OVER NEW 1/2" ROOF BOARD AND EXISTING DECKING AND FRAMING.
A2	EXISTING COPPER GUTTERS AND DOWNSPOUTS TO REMAIN.
A3	NEW SPANISH TILE ROOFING OVER NEW ICE & WATER SHIELD OVER ENTIRE SLOPED ROOFING (WITH EXISTING SELF ADHERING ROOF UNDERLAYMENT, TYP)
A4	CC-RIDGE, TYPICAL AT ROOF RIDGE, TYP.
A5	CC-2 HIP RIDGE TERMINAL, TYP.
A6	#152 HIP STARTER, TYP AT LOW END OF ROOF HIP.
A7	#102 HIP ROLL, TYP AT CAP AT ROOF HIP.
A8	COPPER VALLEY FLASHING, TYP AT ROOF VALLEYS.
A9	EXTEND COPPER VALLEY TO 18" MIN TO FLAT ROOF.
A10	COPPER FLASHING AROUND ALL EXISTING CHIMNEYS, ADJACENT WALLS, AND VENT STACKS, TYP.
A11	NEW ROOF HATCH TO MATCH EXISTING ROOF OPENING. CC OPTION TO MODIFY ROOF HATCH OPENING FOR NEW ROOF HATCH.





