

Follow the yellow keys to help you navigate through this document. Double click for entry. Click left corner box to close.



University of South Carolina
Purchasing Department
1600 Hampton Street, 6th floor
Columbia, SC 29208
Telephone: (803) 777-4115

Request for Quotation

Page One

THIS IS NOT AN ORDER

Quotation must be received No Later Than: 9:00 AM 11 18 2015	Send quotation to above address Attention of: Dennis Gallman	Quotation Number: USC-RFQ-3053-DG	Date 11 4 2016
---	---	---	-----------------------

Print company name and address:

--

Please quote your lowest delivered price of the item(s) listed below. The Purchasing Department reserves the right to reject any or all quotes and to waive any or all technicalities.

1. If an item cannot be furnished, indicate by **NO QUOTE**.
2. All quotes must be signed by the vendor's representative and terms noted, failure to comply with this instruction may result in disqualification of the quote.
3. **FAXED QUOTES ACCEPTABLE. FAX # (803) 777-2032**

Federal I.D. or Social Security No. _____ SC Minority Certification Number (If Applicable) _____

Submitted By (Print Name) _____ Signature _____ Telephone _____

Item No.	Quantity and Unit	Description of Commodity or Services	Unit Price	Total Price
	See Bid Schedule	Provide all labor, equipment and materials to furnish manually operated, sunscreen roller shades for USC Horizon Building Bid as Specified AWARD WILL BE MADE TO ONE VENDOR Point of Contact: Dennis Gallman/803-777-4115 E-MAIL: gallmand@mailbox.sc.edu (SEE ATTACHED SCOPE OF WORK, BID SCHEDULE AND DRAWINGS)		

GENERAL CONDITIONS

DEFAULT: In case of default by the Contractor, the University of South Carolina reserves the right to purchase any or all items in default in the open market, charging the Contractor with any additional costs. The defaulting Contractor shall not be considered a responsible bidder until the assessed charge has been satisfied.

All amendments to and interpretation of this RFQ shall be in writing. The procurement officer shall not be legally bound by any amendment or interpretation that is not in writing.

Any contract entered into by the University of South Carolina or its agencies resulting from this quotation shall be subject to cancellation at the end of any fiscal or appropriated year unless otherwise provided by law.

Payment will be made in accordance with Section 11-35-45 of the South Carolina Consolidated procurement Code and Disbursement Regulations. Delay in receiving invoices, as well as errors and omissions on the invoices, will be considered just cause for withholding payment without losing discount privileges. The University reserves the right to withhold payment or make such deductions as may be necessary to protect the University from loss or damage because of defective work, claims, damages or to pay for repair of correction of materials furnished hereunder.

Quoted prices must remain firm for a period of thirty days beyond the Request for Quotation deadline. Unit prices will govern over extended prices unless otherwise stated.

The University of South Carolina shall consider payment discounts in the award of this contract when such discounts are for thirty days or more after final inspection and acceptance of contract requirements. Payment discounts for less than thirty days are encouraged but shall not be a factor in award determination. Please state your discount terms using the above referenced information as the University's position on the matter.

All materials and products offered must be guaranteed to meet and comply with the requirements all the specifications, terms and conditions indicated or referred to.

The award will be made in accordance with Section 11-35-1520 of the South Carolina Consolidated Procurement Code.

The University reserves the right to reject any and all quotations and to cancel the solicitation; waive any and all technicalities; the University reserves the right to reject any quotation in which the delivery time indicated to be of substantial length to cause disruption and/or delay in operation for which the item(s) is/are intended; ambiguous quotations which are uncertain as to terms, delivery, quantity or compliance with specifications may be rejected.

The contractor assumes sole responsibility and shall hold harmless the University of South Carolina, its directors, officers, employees and agents from and against any and all claims, actions or liabilities of any nature which may be asserted against them by third parties in connection with the performance of the bidder, its directors, officers, employees and agents under this agreement. The University of South Carolina agrees to accept responsibility for claims, actions or liabilities resulting from negligent acts of its employees occurring within the scope of their employment which may be asserted against them by third parties in connection with the performance of the University of South Carolina, its members, directors, officers, employees and agents under this agreement.

Contractor agrees not to refer to award of this contract in commercial advertising in such a manner to state or imply that the products or service provided are endorsed or preferred by the user.

Upon award of a contract under this quotation, the person, partnership, association or corporation to whom the award is made must comply with the laws of South Carolina that require such person or entity to be authorized and/or licensed to do business in this State. Notwithstanding the fact that applicable statutes may be exempt or exclude the successful quoter from requirements that it be authorized and/or licensed to do business in this State, by submission of this signed quote, the quoter agrees to subject itself to the jurisdiction and process of the courts of the State of South Carolina as to all matters and disputes arising or to arise under the contract and the performance thereof, including any questions as to the liability for taxes, licenses or fees levied by the State.

Termination: Subject to the provisions below, the contractor may be terminated for any reason by the University providing a thirty-day advance notice in writing is given to the contractor.

Termination for Convenience: In the event that this contract is terminated or cancelled upon request and for the convenience of the University may negotiate reasonable termination costs, if applicable.

Termination for Cause: Termination by the University for cause, default, or negligence on the part of the Contractor shall be excluded from the foregoing provisions; termination costs, if any, shall not apply. The thirty day advance notice requirement is waived and the default provision in this bid shall apply.

HIPAA Law: The Contractor agrees that to the extent that some or all of the activities within the scope of this Contract are subject to the Health Insurance Portability Accountability Act of 1996, P.L. 104-91, as amended ("HIPAA"), or its implementing regulations, it will comply with the HIPAA requirements and will execute such agreements and practices as the University of South Carolina may require to ensure compliance. Additional information may be viewed at: <http://www.sc.edu/hipaa/>

SPECIAL CONDITIONS

LICENSES, PERMITS, INSURANCE: All costs for required licenses, permits and insurance shall be borne by the Bidder.

The University of South Carolina requires all contractual activities to be performed in a manner that is consistent with all applicable federal, state and local laws, regulations, rules, rulings and ordinances. These include, but are not limited to: the Occupational Safety and Health Act, The Environmental Protection Act, The South Carolina Hazardous Waste Management Act.

IMPORTANT – Please Note – Vendors, we MUST have your Federal ID # (company) or Social Security # (individual) before processing any invoices for payment. Failure to provide this information will result in delay of payments until this information is received. Please include this information with your quote.

ADDITIONAL CONDITIONS

PREFERENCES - A NOTICE TO VENDORS (SEP. 2009): On June 16, 2009, the South Carolina General Assembly rewrote the law governing preferences available to in-state vendors, vendors using in-state subcontractors, and vendors selling in-state or US end products. This law appears in Section 11-35-1524 of the South Carolina Code of Laws. A summary of the new preferences is available at www.procurement.sc.gov/preferences. **ALL THE PREFERENCES MUST BE CLAIMED AND ARE APPLIED BY LINE ITEM, REGARDLESS OF WHETHER AWARD IS MADE BY ITEM OR LOT. VENDORS ARE CAUTIONED TO CAREFULLY REVIEW THE STATUTE BEFORE CLAIMING ANY PREFERENCES. THE REQUIREMENTS TO QUALIFY HAVE CHANGED. IF YOU REQUEST A PREFERENCE, YOU ARE CERTIFYING THAT YOUR OFFER QUALIFIES FOR THE PREFERENCE YOU'VE CLAIMED. IMPROPERLY REQUESTING A PREFERENCE CAN HAVE SERIOUS CONSEQUENCES.** [11-35-1524(E)(4)&(6)]

PREFERENCES - RESIDENT CONTRACTOR PREFERENCE (SEP 2009): To qualify for the RCP, you must maintain an office in this state. An office is a nonmobile place for the regular transaction of business or performance of a particular service which has been operated as such by the bidder for at least one year before the bid opening and during that year the place has been staffed for at least fifty weeks by at least two employees for at least thirty five hours a week each. In addition, you must, at the time you submit your bid, directly employ, or have a documented commitment with, individuals domiciled in South Carolina that will perform services expressly required by the solicitation and your total direct labor cost for those individuals to provide those services must exceed fifty percent of your total bid price. [11-35-1524(C)(1)(iii)] Upon request by the procurement officer, you must identify the persons domiciled in South Carolina that will perform the services involved in the procurement upon which you rely in qualifying for the preference, the services those individuals are to perform, and documentation of the your labor cost for each person identified. If requested, your failure to provide this information promptly will be grounds to deny the preference (and, potentially, for other enforcement action).

Iran Divestment Act

Pursuant to the Iran Divestment Act of 2014, S.C. Code Ann. §§ 11-57-10, *et seq.*, effective January 5, 2015 the Executive Director of the State Budget and Control Board has published a list of persons determined to engage in investment activities in Iran. The list identifies entities that are ineligible to contract with the State of South Carolina or any political subdivision of the State, including state agencies, public universities, colleges and schools, and local governments. The list is available at the following URL:

http://www.mmo.sc.gov/PS/20150105_SC_IDA_List-Final.pdf

By accepting and fulfilling this Purchase Order, you certify that you are not on the current Iran Divestment Act List and that you will notify the Procurement Officer immediately if you are added to the list.

SECTION 122124

MANUAL ROLLER SHADE SYSTEM

PART 1 – GENERAL

1.1 SECTION INCLUDES

- A. Provide manually operated, sunscreen roller shades as applicable. Provide roller shades at three floors of Horizon – second, third, and fourth. See drawings.
- B. Field measure existing curtainwall for accurate dimensions of window shades.

1.2 SUBMITTALS

- A. Product Data: Manufacturer's data sheets on each product to be used, including:
 - 1. Preparation instructions and recommendations.
 - 2. Styles, material descriptions, dimensions of individual components, profiles, features, finishes and operating instructions.
 - 3. Storage and handling requirements and recommendations.
 - 4. Mounting details and installation methods.
- B. Shop Drawings: Plans, elevations, sections, product details, installation details, operational clearances, and relationship to adjacent work.
 - 1. Prepare shop drawings on AutoCAD format using base sheets provided electronically by the Architect.
- C. Verification Samples: For each finish product specified, one complete set of shade components, unassembled, demonstrating compliance with specified requirements. Shade cloth samples and aluminum finish sample as selected. Mark face of material to indicate interior faces.
- D. Maintenance Data: Methods for maintaining roller shades, precautions regarding cleaning materials and methods, instructions for operating hardware and controls.
- E. Warranty: Provide manufacturer's warranty documents as specified in this Section.

1.3 QUALITY ASSURANCE

- A. Manufacturer Qualifications: Obtain roller shades system through one source from a single manufacturer with a minimum of ten years experience and minimum of five projects of similar scope and size in manufacturing products comparable to those specified in this section. This includes but is not limited to all required extrusions, accessories, controls and fabricated roller shades or else all stated and published warranties may be void.
- B. Installer Qualifications: Engage an installer, which shall assume responsibility for installation of all system components, with the following qualifications.
 - 1. Installer for roller shade system shall be trained and certified by the manufacturer with a minimum of five years experience in installing products comparable to those specified in this section.
- C. Fire-Test-Response Characteristics: Passes NFPA 701-99 small and large-scale vertical burn. Materials tested shall be identical to products proposed for use.
- D. Mock-Up: Provide a mock-up of one roller shade assembly for evaluation of mounting, appearance and accessories.
 - 1. Locate mock-up in window designated by Architect.
 - 2. Do not proceed with remaining work until, mock-up is accepted by Architect.

1.4 DELIVERY, STORAGE, AND HANDLING

- A. Deliver components in factory-labeled packages, marked with manufacturer and product name, fire-test-response characteristics, and location of installation using same room designations indicated on Drawings.

1.5 WARRANTY

- A. Warranty: Provide manufacturer's standard warranties, including the following:
 - 1. Roller Shade Hardware, and Shadecloth: Manufacturer's standard non-depreciating twenty-five year limited warranty.
 - 2. Roller Shade Installation: One year from date of Substantial Completion.

PART 2 – PRODUCTS

2.1 MANUFACTURER

Basis of Design Manufacturer for Window Shade System: Products by MechoSystems; 42-03 35th Street, Long Island City, NY 11101

2.2 SHADE BANDS

- A. Shade Bands: Construction of shade band includes the fabric, the enclosed hem weight, shade roller tube, and the attachment of the shade band to the roller tube. Sewn hems and open hem pockets are not acceptable.
 - 1. Concealed Hembar: Shall be continuous extruded aluminum for entire width of shade band and with the following characteristics:
 - a. Hembar shall be heat sealed on all sides.
 - b. Open ends shall not be accepted.
 - 2. Shade Band and Shade Roller Attachment:
 - a. Use extruded aluminum shade roller tube of a diameter and wall thickness required to support shade fabric without excessive deflection.
 - b. Provide for positive mechanical attachment of shade band to roller tube; shade band shall be made removable / replaceable with a “snap-on” snap-off” spline mounting, without having to remove shade roller from shade brackets.
 - c. Mounting Spline shall not require use of adhesives, adhesive tapes, staples, and/or rivets.
 - d. Any method of attaching shade band to roller tube that requires the use of: adhesive, adhesive tapes, staples, and/or rivets, does not meet the performance requirements of this specification and shall not be accepted.

2.3 ROLLER SHADE FABRICATION

- A. Fabricate shade cloth to hang flat without buckling or distortion. Fabricate with heat-sealed trimmed edges to hang straight without curling or raveling. Fabricate unguided shadecloth to roll true and straight without shifting sideways more than 1/8 inch (3.18 mm) in either direction per 8 feet (2438 mm) of shade height due to warp distortion or weave design.
- B. Provide battens in standard shades as required to assure proper tracking and uniform rolling of the shade bands. Contractor shall be responsible for assuring the width-to-height (W:H) ratios shall not exceed manufacturer's standards or, in absence of such standards, shall be responsible for establishing appropriate standards to assure proper tracking and rolling of the shadecloth within specified standards. Battens shall be roll-formed stainless steel or tempered steel, as required.
- C. For railroaded shade bands, provide seams in railroaded multi-width shade bands as required to meet size requirements and in accordance with seam alignment as acceptable to Architect. Seams shall be properly located. Furnish battens in place of plain seams when the width, height, or weight of the shade exceeds manufacturer's standards. In absence of such standards, assure proper use of seams or battens as required to, and assure the proper tracking of the railroaded multi-width shade bands

2.4 ROLLER SHADE COMPONENTS

A. Access and Material Requirements:

1. Provide shade hardware allowing for the removal of shade roller tube from brackets without removing hardware from opening and without requiring end or center supports to be removed.
2. Provide shade hardware that allows for removal and re-mounting of the shade bands without having to remove the shade tube, drive or operating support brackets.
3. Use only Delran engineered plastics by DuPont for all plastic components of shade hardware. Styrene based plastics, and /or polyester, or reinforced polyester shall not be accepted.

B. Manual Operated Chain Drive Hardware and Brackets:

1. Provide for universal, regular and offset drive capacity, allowing drive chain to fall at front, rear or non-offset for all shade drive end brackets. Universal offset shall be adjustable for future change.
2. Provide hardware capable for installation of a removable fascia, for both regular and/or reverse roll, which shall be installed without exposed fastening devices of any kind.
3. Provide shade hardware system that allows for removable regular and/or reverse roll fascias to be mounted continuously across two or more shade bands without requiring exposed fasteners of any kind.
4. Provide shade hardware system that allows for operation of multiple shade bands (multi-banded shades) by a single chain operator, subject to manufacturer's design criteria. Connectors shall be offset to assure alignment from the first to the last shade band.
5. Provide shade hardware system that allows multi-banded manually operated shades to be capable of smooth operation when the axis is offset a maximum of 6 degrees on each side of the plane perpendicular to the radial line of the curve, for a 12 degrees total offset.
6. Provide positive mechanical engagement of drive mechanism to shade roller tube. Friction fit connectors for drive mechanism connection to shade roller tube are not acceptable.
7. Provide shade hardware constructed of minimum 1/8-inch (3.18 mm) thick plated steel or heavier as required to support 150 percent of the full weight of each shade.
8. Drive Bracket / Brake Assembly:
 - a. MechoShade Drive Bracket model M5 shall be fully integrated with all MechoShade accessories, including, but not limited to: SnapLoc fascia
 - b. M5 drive sprocket and brake assembly shall rotate and be supported on a welded 3/8 inch (9.525 mm) steel pin.
 - c. The brake shall be an over running clutch design which disengages to 90 percent during the raising and lowering of a shade. The brake shall withstand a pull force of 50 lbs. (22 kg) in the stopped position.

- d. The braking mechanism shall be applied to an oil-impregnated hub on to which the brake system is mounted. The oil impregnated hub design includes an articulated brake assembly, which assures a smooth, non-jerky operation in raising and lowering the shades. The assembly shall be permanently lubricated. Products that require externally applied lubrication and or not permanently lubricated are not acceptable.
 - e. The entire M5 assembly shall be fully mounted on the steel support bracket, and fully independent of the shade tube assembly, which may be removed and reinstalled without effecting the roller shade limit adjustments.
9. Drive Chain: #10 qualified stainless steel chain rated to 90 lb. (41 kg) minimum breaking strength. Nickel plate chain shall not be accepted.

2.5 ROLLER SHADE SCHEDULE

- A. Roller Shade Schedule: Refer to the Drawings for locations.
 - 1. Shade Type: Manual operating, chain drive, sunscreen roller shades in spaces shown on the Drawings.
 - a. Fascias.

2.6 SHADECLOTH

- A. Visually Transparent Single Fabric Shadecloth: MechoSystems, ThermoVeil group, 1500 Series, fabricated from 75% PVC (coating), 25% polyester (yarn) single thickness,
 - 1. Dense Basket Weave: 3 percent open 2x2 basket weave
 - 2. Color: White.
 - 3. Warranty: 10-Year Limited.

2.7 ROLLER SHADE ACCESSORIES

- A. Fascia:
 - 1. Continuous removable extruded aluminum fascia that attaches to shade mounting brackets without the use of adhesives, magnetic strips, or exposed fasteners.
 - 2. Fascia shall be able to be installed across two or more shade bands in one piece.
 - 3. Fascia shall fully conceal brackets, shade roller and fabric on the tube.
 - 4. Provide bracket / fascia end caps where mounting conditions expose outside of roller shade brackets.

PART 3 – EXECUTION

3.1 EXAMINATION

Do not begin installation until substrates have been properly prepared. If substrate preparation is the responsibility of another installer, notify Architect of unsatisfactory preparation before proceeding.

3.2 PREPARATION

- A. Clean surfaces thoroughly prior to installation. Prepare surfaces using the methods recommended by the manufacturer for achieving the best result for the substrate under the project conditions.

3.3 INSTALLATION OF ROLLER SHADES

- A. Contractor Furnish and Install Responsibilities:
 - 1. Window Covering Contractor (WC) shall provide an on site, Project Manager, and shall be present for all related jobsite scheduling meetings.
 - 2. WC shall be responsible for field inspection on an area-by- area and floor-by- floor basis during construction to confirm proper mounting conditions per approved shop drawings.
 - 3. Verification of Conditions: examine the areas to receive the work and the conditions under which the work would be performed and notify Owner of conditions detrimental to the proper and timely completion of the work. Do not proceed until unsatisfactory conditions have been corrected. Commencement of installation shall constitute acceptance of substrate conditions by the installer.
 - 4. WC shall provide accurate to 0.0625 inch (1.5875mm); field measurements for custom shade fabrication on the Roller Shades manufacturers input forms.
 - 5. WC Installer shall install roller shades level, plumb, square, and true according to manufacturer's written instructions, and as specified here in. The horizontal surface of the shade pocket shall not be out-of-level more than 0.625 inch (15.875mm) over 20 linear feet (6.096 meters)
 - 6. Shades shall be located so the shade band is not closer than 2 inches (50 mm) to the interior face of the glass. Allow proper clearances for window operation hardware.
 - 7. Adjust, align and balance roller shades to operate smoothly, easily, safely, and free from binding or malfunction throughout entire operational range.
 - 8. Clean roller shade surfaces after installation, according to manufacturer's written instructions.
 - 9. WC shall train Owner's maintenance personnel to adjust, operate and maintain roller shade systems.
 - 10. Protect installed products until completion of project.
 - 11. Touch-up, repair or replace damaged products before Substantial Completion.

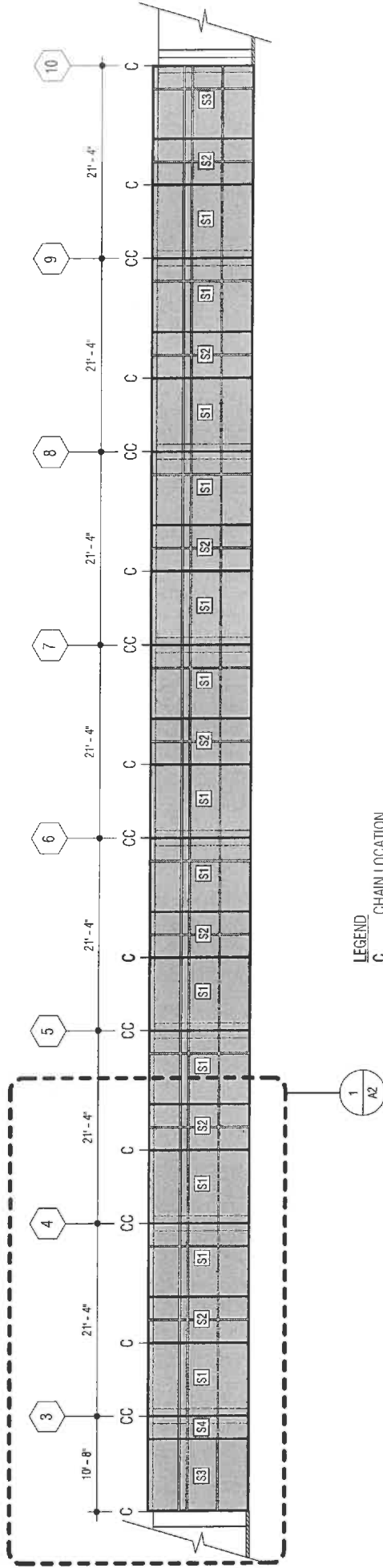
3.4 PROTECTION

- A. Protect installed products until completion of project.
- B. Touch-up, repair or replace damaged products before Substantial Completion.

SITE VISIT – (JAN 2006): A site visit will be held at the following date, time and location. The University assumes no responsibility for any conclusions or interpretations made by the contractor based on the information made available at the site visit. Nor does the University assume responsibility for any understanding reached or representation made concerning conditions which can affect the work by any of its officers or agents before the execution of this contract, unless that understanding or representation is expressly stated in this contract.

Date & Start Time: November 15, 2016 at 10:00 AM
Location: University of South Carolina, Columbia Campus
Horizon 1 Building
Main Lobby
541 Main Street
Columbia SC 29208

END OF SECTION



- LEGEND**
- C CHAIN LOCATION
 - CC CHAINS LOCATION (2)
 - SX WINDOW SHADE DESIGNATION

NOTES:

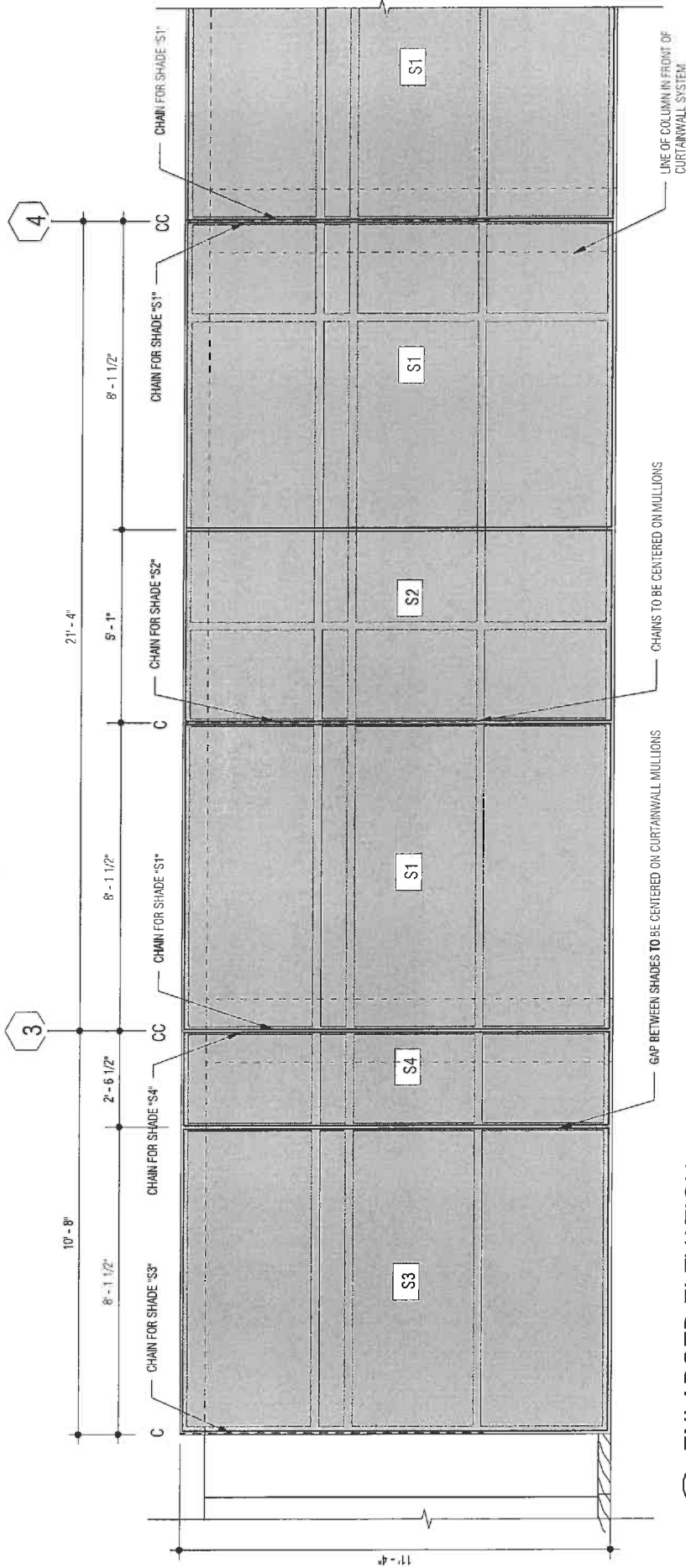
1. FIELD VERIFY ALL DIMENSIONS & WINDOW WIDTHS.
2. ALL SHADE CHAINS TO BE LOCATED ON CURTAINWALL MULLIONS.
3. ALL SHADE GAPS/EDGES TO BE LOCATED AT CURTAINWALL MULLIONS.

OVERALL ELEVATION

3/32" = 1'-0"

HORIZON WINDOW SHADES	WINDOW SHADE ELEVATION
University of South Carolina	A1
Columbia, South Carolina	Date: 17 October 2016





1 A2 3/8" = 1'-0" ENLARGED ELEVATION

- LEGEND**
- C CHAIN LOCATION
 - CC CHAINS LOCATION (2)
 - SX WINDOW SHADE DESIGNATION

- NOTES:**
1. FIELD VERIFY ALL DIMENSIONS & WINDOW WIDTHS.
 2. ALL SHADE CHAINS TO BE LOCATED ON CURTAINWALL MULLIONS.
 3. ALL SHADE GAPS/EDGES TO BE LOCATED AT CURTAINWALL MULLIONS.

HORIZON WINDOW SHADES

University of South Carolina
Columbia, South Carolina

ENLARGED SHADE ELEVATION

A2

Date: 17 October 2016

WTS
WATSON TATE SAVORY

BID SCHEDULE

USC-RFQ-3053-DG

Item	Qty	Unit of Measure	Description		Total Price
1	1	Lot	Install Sunscreen Shade		\$ _____

Resident Contractor Preference _____

Resident Sub-Contractor Preference (2%) _____ Number of Sub-Contractors _____

Resident Sub-Contractor Preference (4%) _____ Number of Sub-Contractors _____

Note: The service preferences do not apply to a bid for an item of work by the bidder if the annual price of the bidder's work exceeds \$50,000 or the total potential price of the bidder's work exceeds \$500,000. [11-35-1524(E)(3)]

Please refer to the preference clauses listed in the additional conditions of this solicitation to ensure that you qualify to select the above preferences.

Bidder is to submit the following for preferences requested above:

- 1) Identify the subcontractor to perform the work:
- 2) Identify the work the subcontractor is to perform:
- 3) Bidder's factual basis for concluding that the subcontractor's work constitutes the required