

ADDENDUM NUMBER 2

June 22, 2016

PROJECT: **USC Aiken Engineering Renovations**
 USC PROJECT NO. 50002895

This addendum forms a part of the Construction Documents and modifies the original Bidding Documents as noted below. Acknowledge receipt of this addendum in the space provided on the Bid Form. Failure to do so may subject Bidder to disqualification.

GENERAL:

- A2G1 The Non Mandatory Pre Bid Conference Sign In Sheet is attached.
- A2G2 USC Aiken will be responsible for removing all movable furniture in the existing spaces.
- A2G3 USC Aiken will be responsible for removing all Marker Boards, Chalk Boards, Projectors, Projector Screens and Pencil Sharpeners from existing spaces as needed.

DRAWINGS:

- A2D1 Lab Casework drawings by Nycom are attached for reference. These documents are provided to show the scope of the owner furnished and installed casework. The Contractor will be required to coordinate schedule and installation with the Lab Casework vendor.

END OF ADDENDUM NUMBER 2



University of South Carolina Pre Bid Conference Sign In Sheet

Aiken, SC

Project Name, Number & Project Manager: USC Aiken-Engineering Renovation 50002895 Troy Green
 Date & Time: June 21, 2016 10AM 471 University Parkway; Maintenance Shop

Name	Company	Address	Phone #	Email
Ivan Kiker	Premier Construction	P.O. Box 5790 Aiken, S.C.	803-634-1941	I.Kiker@Premiercsive.com
George Fabian	Stewart Builders	237 Charlottefield St Aiken, S.C.	803-648-4605	geof@Stewartbuilders.com
Tim Demaris	Quality Pro Services	212 Main St 3024 New E Lebanon, SC	803-335-8585	jdemaris@qpsbest.com
Matthew King	GMC	101 E. Wash St 200 Columbiana, SC 29601	804-233-2804	matthew.king@gmcwork.com
Dylan Meyer	First Class Const.	126 B Subear Rd. Columbia, SC 29210	803-926-1922	fmeyer@fcon.com
Brian Brien	USC Aiken	—	883-641-3254	brien@usca.edu
Troy Green	USC Columbia	743 Greene St Columbia, SC	803-497-6672	green@fmc.sc.edu

*Please make sure you list your company name as registered with LLC.
 * By signing and providing your email address, you are authorizing the University of South Carolina to send you information electronically.



EQUIPMENT FOR EDUCATIONAL,
HEALTH CARE AND INDUSTRIAL
FACILITIES
WWW.NYCOMINC.COM



PROUDLY MADE IN AMERICA
WWW.KEWAUNEE.COM

USCA ENGINEERING LAB 224 AIKEN, SOUTH CAROLINA

6			
5			
4			
3			
2			
1			
#	ISSUE DATE	BY	REMARKS

ARCHITECT:
GOODWYN MILLS CAWOOD
101 EAST WASHINGTON STREET
SUITE 200
GREENVILLE, SC 29601

CONTRACTOR:
PENDING

SHIP TO ADDRESS:
USC AIKEN
471 UNIVERSITY PARKWAY
AIKEN, SC 29801

ACCOUNT MANAGER: M.LINCK
PROJECT MANAGER: ----
CAD DESIGNER: T.MOYERS
NYCOM, INC
1240B FIRST STREET SOUTH
COLUMBIA, SC 29209
P: 803.726.1275

DATE:
2016-04-21
NYCOM PTN:
16030410
KSC #:
*

KEWAUNEE SCIENTIFIC

STYLE 05 CONTEMPORARY SERIES

SQUARE EDGE FULL OVERLAY 3/4" COMPOSITE CORE
DOORS AND DRAWERS

ALL CASEWORK, HARDWARE AND FINISHES CERTIFIED

SEFA 8 COMPLIANT

VENEER TYPE

[2] MAPLE

GRAIN DIRECTION

VERTICAL MATCHED

CABINET CORE (SIDES & BOTTOM)

3/4" VENEER CORE HARDWOOD PLYWOOD WITH FRONT EXPOSED EDGES FACED WITH SOLID HARDWOOD EDGING

CABINET TOP FRAME

[-] TWO-PIECE TOP FRAME:
CABINET TOP FRAME CONSISTS OF A 3-1/8"X1" HARDWOOD FRONT RAIL WITH 3MM HARDWOOD FACING WITH A 2-1/2"X1" HARDWOOD PLYWOOD BACK RAIL

INTERMEDIATE FRONT RAILS

[-] WITHOUT

BASE CABINET BACK PANEL

[-] FIXED BACK PANEL
1/4" HARDBOARD BACK IS DADOED INTO END PANELS & BOTTOM AND SECURELY FASTENED.

DRAWER CONSTRUCTION

[-] DRAWERS WITH HARDBOARD BOTTOMS
DRAWER SIDES, BACK AND SUB-FRONT ARE 1/2" T, 9-PLY BIRCH PLYWOOD WITH DOVETAIL JOINTS ATTACHING THE DRAWER SUB-FRONT AND DRAWER BACK TO THE DRAWER SIDES. DRAWER BOTTOMS ARE 1/4" T HARDBOARD SET AND HOT-MELT GLUED INTO 1/4" GROOVES ON ALL FOUR SIDES

SHELF MATERIAL

BASE CABINETS HAVE FULL DEPTH 3/4" T VENEER CORE HARDWOOD PLYWOOD SHELVES.
WALL & TALL CABINETS HAVE 1" T VENEER CORE HARDWOOD PLYWOOD SHELVES.
SAME VENEER SPECIES AS EXTERIOR WITH 1/8" HARDWOOD FACING ON FRONT EDGE.

BASE MATERIAL

[-] PLYWOOD INTEGRAL WITH SIDE PANELS WITHOUT LEVELERS
*TOE KICKS ON TALL CASES 12 & 16"D ARE FLUSH WITH CABINET BODY.
TOE KICKS ON TALL CASES 22"D ARE RECESSED TO LINE UP WITH ADJACENT BASE CABINETS

PULL STYLE

[4] STAINLESS STEEL WIRE

PULL CONFIGURATION

HORIZONTAL ON DRAWERS, VERTICAL ON DOORS

HINGE STYLE

5-KNUCKLE INSTITUTIONAL OFFSET TYPE,
2-3/4" L APPLIED TO WITHSTAND A WEIGHT LOAD OF 150lbs
[0] STAINLESS STEEL

DRAWER SUSPENSION

[-] ZINC PLATED, COLD ROLLED STEEL, FULL EXTENSION, LINEAR BALL BEARING SLIDES RATED AT 100lbs DYNAMIC LOAD
THE DRAWER IS REMOVABLE WITHOUT THE USE OF TOOLS

CATCHES

SPRING-LOADED POLYETHYLENE ROLLER WITH STEEL STRIKE PLATE

SHELF SUPPORT CLIPS

CLEAR TWIN PIN TYPE CORROSION RESISTANT WITH HOLD DOWN FEATURE

LABEL HOLDERS

[-] NONE AT GENERAL CASEWORK
(AT FILE DRAWERS ONLY)

FINISH

FORMULATED FOR CHEMICAL RESISTANCE TO MEET SEFA 8 PERFORMANCE STANDARDS. SURFACES ARE FINISHED WITH A CHEMICAL RESISTANT SYNTHETIC VARNISH SYSTEM UTILIZING A LOW VOC FLAT LINE FINISHING PROCESS

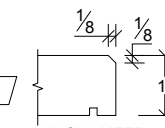
COUNTER TOPS

ALL TOPS TO BE MAXIMUM PRACTICAL LENGTHS DO NOT LOCATE JOINTS ABOVE KNEE SPACE AREAS

EPOXY RESIN TOPS TO BE 1" THICK WITH 4" HIGH APPLIED CURB AND INTEGRAL DRIP EDGE AS MANUFACTURED BY KEWAUNEE SCIENTIFIC

FINISHED EDGE PROFILE

1/8" CHAMFER



ARCH NOTE:
PLEASE VERIFY WOOD STAIN AND TABLE FRAME COLOR ARE ACCEPTABLE

FIXTURES, SINKS & ACCESSORIES

ALL WALL MOUNTED SERVICE FITTINGS AND SAFETY SHOWERS ARE TURNED OVER TO THE PLUMBER FOR INSTALLATION

COVE BASE

BY OTHERS

COLOR SELECTIONS (REQUIRED PRIOR TO ORDER)

COUNTERTOP COLOR (KEMRESIN) BLACK

CABINET BASE COLOR (WOOD) NO. 201 NATURAL MAPLE

DRAWER BOX AND REMOVABLE ACCESS PANEL DOORS (WOOD) NO. 61 LIGHT NEUTRAL

CABINET INTERIORS AND BACK OF DOORS (WOOD) CLEAR FINISH

TABLE FRAME NO. 78 SNOW WHITE

GROMMET (PLASTIC) BLACK 90

POWER STRIP (METAL) GREY ALUMINUM

POWER STRIP (RECEPTACLES) BLACK

CHAIR BLACK

CAULK TYPE (DEFAULT:PAINTABLE LATEX) PAINTABLE LATEX

CAULK COLOR (DEFAULT:WHITE) WHITE

SYMBOL LEGEND

- WOOD EXTENDED END PANELS LEFT
- WOOD EXTENDED END PANELS RIGHT
- WOOD EXTENDED END PANELS BOTH

LOCKS (REQUIRED PRIOR TO ORDER)

KEYING REQUIREMENTS

- NO LOCKS
- ALL ALIKE
- ALIKE BY ROOM
- OTHER: SEE KEY SCHEDULE
- ALL DIFFERENT

LOCK LEGEND

- [J] DISK LOCKS WITH LOCK PANELS (DOOR UNITS ONLY)
- [K] DISK LOCKS WITHOUT LOCK PANELS (DRAWER UNITS ONLY)

CUSTOMER APPROVAL

DATE:

NAME:

SIGNATURE:

NOTATION LEGEND

- ARCHITECTURAL OR CUSTOMER NOTE
- PROJECT MANAGER OR SALES NOTE
- FIXTURE TYPE NOTE
- INSTALLER NOTE
- TOP MFR OR OTHER NOTE

NYCOM INC
EQUIPMENT FOR EDUCATIONAL
HEALTH CARE AND INDUSTRIAL
FACILITIES
WWW.NYCOMINC.NET

PROGRESS
DRAWING

CHECKED DATE: 2016-04-21
DRAWN BY: T. MOYERS
CHECKED BY: T. MOYERS

DATE: 2016-04-21
DRAWN BY: T. MOYERS
CHECKED BY: T. MOYERS

DATE: 2016-04-21
DRAWN BY: T. MOYERS
CHECKED BY: T. MOYERS

DATE: 2016-04-21
DRAWN BY: T. MOYERS
CHECKED BY: T. MOYERS

DATE: 2016-04-21
DRAWN BY: T. MOYERS
CHECKED BY: T. MOYERS

DATE: 2016-04-21
DRAWN BY: T. MOYERS
CHECKED BY: T. MOYERS

DATE: 2016-04-21
DRAWN BY: T. MOYERS
CHECKED BY: T. MOYERS

DATE: 2016-04-21
DRAWN BY: T. MOYERS
CHECKED BY: T. MOYERS

DATE: 2016-04-21
DRAWN BY: T. MOYERS
CHECKED BY: T. MOYERS

DATE: 2016-04-21
DRAWN BY: T. MOYERS
CHECKED BY: T. MOYERS

DATE: 2016-04-21
DRAWN BY: T. MOYERS
CHECKED BY: T. MOYERS

DATE: 2016-04-21
DRAWN BY: T. MOYERS
CHECKED BY: T. MOYERS

DRAWING TITLE: GENERAL NOTES AND OPTIONS
PROJECT TITLE: USCA ENGINEERING LAB 224
AIKEN, SOUTH CAROLINA

SCALE: NTS

KSC#: *

PTN#: 16030410

SHEET NO: GN01

THIS PRINT IS LOANED SUBJECT TO RETURN UPON DEMAND AND UPON THE EXPRESS CONDITION THAT IT WILL NOT BE USED DIRECTLY OR INDIRECTLY IN ANY WAY DETRIMENTAL TO OUR INTERESTS.

6 5 4 3 2 1 #

ISSUE DATE BY REMARKS

DATE: 2016-04-21
DRAWN BY: T. MOYERS
CHECKED BY: T. MOYERS

DATE: 2016-04-21
DRAWN BY: T. MOYERS
CHECKED BY: T. MOYERS

DATE: 2016-04-21
DRAWN BY: T. MOYERS
CHECKED BY: T. MOYERS

DATE: 2016-04-21
DRAWN BY: T. MOYERS
CHECKED BY: T. MOYERS

DATE: 2016-04-21
DRAWN BY: T. MOYERS
CHECKED BY: T. MOYERS

DATE: 2016-04-21
DRAWN BY: T. MOYERS
CHECKED BY: T. MOYERS

DATE: 2016-04-21
DRAWN BY: T. MOYERS
CHECKED BY: T. MOYERS

DATE: 2016-04-21
DRAWN BY: T. MOYERS
CHECKED BY: T. MOYERS

DATE: 2016-04-21
DRAWN BY: T. MOYERS
CHECKED BY: T. MOYERS

DATE: 2016-04-21
DRAWN BY: T. MOYERS
CHECKED BY: T. MOYERS

DATE: 2016-04-21
DRAWN BY: T. MOYERS
CHECKED BY: T. MOYERS

DATE: 2016-04-21
DRAWN BY: T. MOYERS
CHECKED BY: T. MOYERS

DATE: 2016-04-21
DRAWN BY: T. MOYERS
CHECKED BY: T. MOYERS

DATE: 2016-04-21
DRAWN BY: T. MOYERS
CHECKED BY: T. MOYERS

DATE: 2016-04-21
DRAWN BY: T. MOYERS
CHECKED BY: T. MOYERS

DATE: 2016-04-21
DRAWN BY: T. MOYERS
CHECKED BY: T. MOYERS

DATE: 2016-04-21
DRAWN BY: T. MOYERS
CHECKED BY: T. MOYERS

DATE: 2016-04-21
DRAWN BY: T. MOYERS
CHECKED BY: T. MOYERS

DATE: 2016-04-21
DRAWN BY: T. MOYERS
CHECKED BY: T. MOYERS

DATE: 2016-04-21
DRAWN BY: T. MOYERS
CHECKED BY: T. MOYERS

DATE: 2016-04-21
DRAWN BY: T. MOYERS
CHECKED BY: T. MOYERS

DATE: 2016-04-21
DRAWN BY: T. MOYERS
CHECKED BY: T. MOYERS

DATE: 2016-04-21
DRAWN BY: T. MOYERS
CHECKED BY: T. MOYERS

DATE: 2016-04-21
DRAWN BY: T. MOYERS
CHECKED BY: T. MOYERS

DATE: 2016-04-21
DRAWN BY: T. MOYERS
CHECKED BY: T. MOYERS

DATE: 2016-04-21
DRAWN BY: T. MOYERS
CHECKED BY: T. MOYERS

DATE: 2016-04-21
DRAWN BY: T. MOYERS
CHECKED BY: T. MOYERS

DATE: 2016-04-21
DRAWN BY: T. MOYERS
CHECKED BY: T. MOYERS

DATE: 2016-04-21
DRAWN BY: T. MOYERS
CHECKED BY: T. MOYERS

DATE: 2016-04-21
DRAWN BY: T. MOYERS
CHECKED BY: T. MOYERS

DATE: 2016-04-21
DRAWN BY: T. MOYERS
CHECKED BY: T. MOYERS

DATE: 2016-04-21
DRAWN BY: T. MOYERS
CHECKED BY: T. MOYERS

DATE: 2016-04-21
DRAWN BY: T. MOYERS
CHECKED BY: T. MOYERS

DATE: 2016-04-21
DRAWN BY: T. MOYERS
CHECKED BY: T. MOYERS

DATE: 2016-04-21
DRAWN BY: T. MOYERS
CHECKED BY: T. MOYERS

DATE: 2016-04-21
DRAWN BY: T. MOYERS
CHECKED BY: T. MOYERS

DATE: 2016-04-21
DRAWN BY: T. MOYERS
CHECKED BY: T. MOYERS

DATE: 2016-04-21
DRAWN BY: T. MOYERS
CHECKED BY: T. MOYERS

DATE: 2016-04-21
DRAWN BY: T. MOYERS
CHECKED BY: T. MOYERS

DATE: 2016-04-21
DRAWN BY: T. MOYERS
CHECKED BY: T. MOYERS

DATE: 2016-04-21
DRAWN BY: T. MOYERS
CHECKED BY: T. MOYERS

DATE: 2016-04-21
DRAWN BY: T. MOYERS
CHECKED BY: T. MOYERS

DATE: 2016-04-21
DRAWN BY: T. MOYERS
CHECKED BY: T. MOYERS

DATE: 2016-04-21
DRAWN BY: T. MOYERS
CHECKED BY: T. MOYERS

DATE: 2016-04-21
DRAWN BY: T. MOYERS
CHECKED BY: T. MOYERS

DATE: 2016-04-21
DRAWN BY: T. MOYERS
CHECKED BY: T. MOYERS

DATE: 2016-04-21
DRAWN BY: T. MOYERS
CHECKED BY: T. MOYERS

DATE: 2016-04-21
DRAWN BY: T. MOYERS
CHECKED BY: T. MOYERS

DATE: 2016-04-21
DRAWN BY: T. MOYERS
CHECKED BY: T. MOYERS

DATE: 2016-04-21
DRAWN BY: T. MOYERS
CHECKED BY: T. MOYERS

DATE: 2016-04-21
DRAWN BY: T. MOYERS
CHECKED BY: T. MOYERS

DATE: 2016-04-21
DRAWN BY: T. MOYERS
CHECKED BY: T. MOYERS

DATE: 2016-04-21
DRAWN BY: T. MOYERS
CHECKED BY: T. MOYERS

DATE: 2016-04-21
DRAWN BY: T. MOYERS
CHECKED BY: T. MOYERS

DATE: 2016-04-21
DRAWN BY: T. MOYERS
CHECKED BY: T. MOYERS

DATE: 2016-04-21
DRAWN BY: T. MOYERS
CHECKED BY: T. MOYERS

DATE: 2016-04-21
DRAWN BY: T. MOYERS
CHECKED BY: T. MOYERS

DATE: 2016-04-21
DRAWN BY: T. MOYERS
CHECKED BY: T. MOYERS

DATE: 2016-04-21
DRAWN BY: T. MOYERS
CHECKED BY: T. MOYERS

DATE: 2016-04-21
DRAWN BY: T. MOYERS
CHECKED BY: T. MOYERS

DATE: 2016-04-21
DRAWN BY: T. MOYERS
CHECKED BY: T. MOYERS

DATE: 2016-04-21
DRAWN BY: T. MOYERS
CHECKED BY: T. MOYERS

DATE: 2016-04-21
DRAWN BY: T. MOYERS
CHECKED BY: T. MOYERS

DATE: 2016-04-21
DRAWN BY: T. MOYERS
CHECKED BY: T. MOYERS

DATE: 2016-04-21
DRAWN BY: T. MOYERS
CHECKED BY: T. MOYERS

DATE: 2016-04-21
DRAWN BY: T. MOYERS
CHECKED BY: T. MOYERS

DATE: 2016-04-21
DRAWN BY: T. MOYERS
CHECKED BY: T. MOYERS

DATE: 2016-04-21
DRAWN BY: T. MOYERS
CHECKED BY: T. MOYERS

DATE: 2016-04-21
DRAWN BY: T. MOYERS
CHECKED BY: T. MOYERS

DATE: 2016-04-21
DRAWN BY: T. MOYERS
CHECKED BY: T. MOYERS

DATE: 2016-04-21
DRAWN BY: T. MOYERS
CHECKED BY: T. MOYERS

DATE: 2016-04-21
DRAWN BY: T. MOYERS
CHECKED BY: T. MOYERS

DATE: 2016-04-21
DRAWN BY: T. MOYERS
CHECKED BY: T. MOYERS

DATE: 2016-04-21
DRAWN BY: T. MOYERS
CHECKED BY: T. MOYERS

DATE: 2016-04-21
DRAWN BY: T. MOYERS
CHECKED BY: T. MOYERS

DATE: 2016-04-21
DRAWN BY: T. MOYERS
CHECKED BY: T. MOYERS

DATE: 2016-04-21
DRAWN BY: T. MOYERS
CHECKED BY: T. MOYERS

DATE: 2016-04-21
DRAWN BY: T. MOYERS
CHECKED BY: T. MOYERS

DATE: 2016-04-21
DRAWN BY: T. MOYERS
CHECKED BY: T. MOYERS

DATE: 2016-04-21
DRAWN BY: T. MOYERS
CHECKED BY: T. MOYERS

DATE: 2016-04-21
DRAWN BY: T. MOYERS
CHECKED BY: T. MOYERS

DATE: 2016-04-21
DRAWN BY: T. MOYERS
CHECKED BY: T. MOYERS

DATE: 2016-04-21
DRAWN BY: T. MOYERS
CHECKED BY: T. MOYERS

DATE: 2016-04-21
DRAWN BY: T. MOYERS
CHECKED BY: T. MOYERS

DATE: 2016-04-21
DRAWN BY: T. MOYERS
CHECKED BY: T. MOYERS

DATE: 2016-04-21
DRAWN BY: T. MOYERS
CHECKED BY: T. MOYERS

DATE: 2016-04-21
DRAWN BY: T. MOYERS
CHECKED BY: T. MOYERS

DATE: 2016-04-21
DRAWN BY: T. MOYERS
CHECKED BY: T. MOYERS

DATE: 2016-04-21
DRAWN BY: T. MOYERS
CHECKED BY: T. MOYERS

DATE: 2016-04-21
DRAWN BY: T. MOYERS
CHECKED BY: T. MOYERS

DATE: 2016-04-21
DRAWN BY: T. MOYERS
CHECKED BY: T. MOYERS

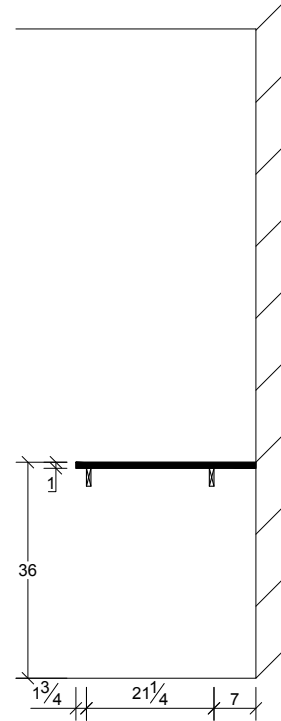
DATE: 2016-04-21
DRAWN BY: T. MOYERS
CHECKED BY: T. MOYERS

DATE: 2016-04-21
DRAWN BY: T. MOYERS
CHECKED BY: T. MOYERS

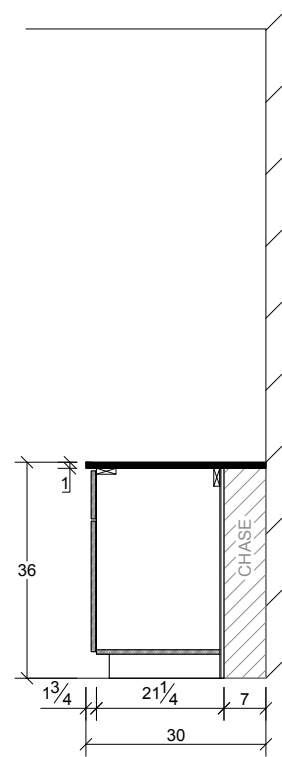
DATE: 2016-04-21
DRAWN BY: T. MOYERS
CHECKED BY: T. MOYERS

DATE: 2016-04-21
DRAWN BY:

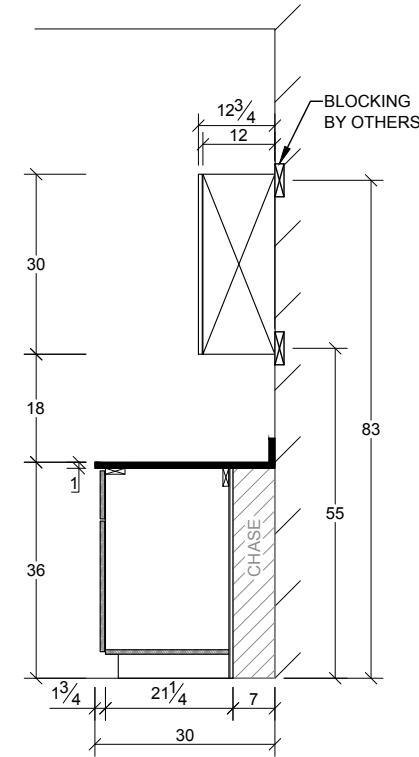
E:\Dropbox (NYCOM)\My projects\16030410 USCA Engineering Lab 224\16030410.dwg, 4/22/2016 9:30:47 AM, todd.moyers



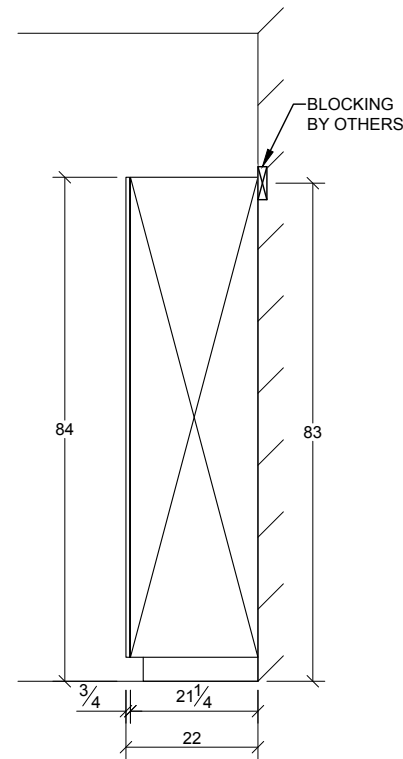
SECTION A
STANDING HEIGHT KNEE
SPACE OPEN TO WALL



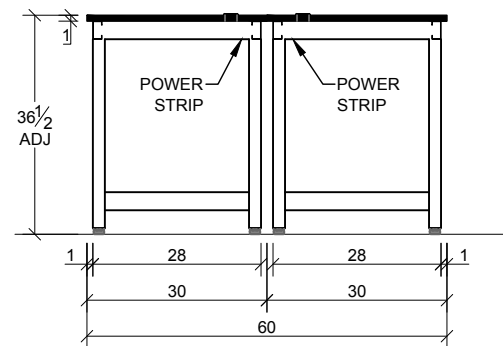
SECTION B
STANDING HEIGHT
BASE CABINET



SECTION C
STANDING HEIGHT BASE
WITH 30" WALL



SECTION D
84" HEIGHT TALL CABINET



SECTION E
TABLE ISLAND

BLOCKING MATERIAL TO BE SUPPLIED AND INSTALLED BY OTHERS MATERIAL TO BE WOOD 2x6, OR 18ga SHEET STEEL

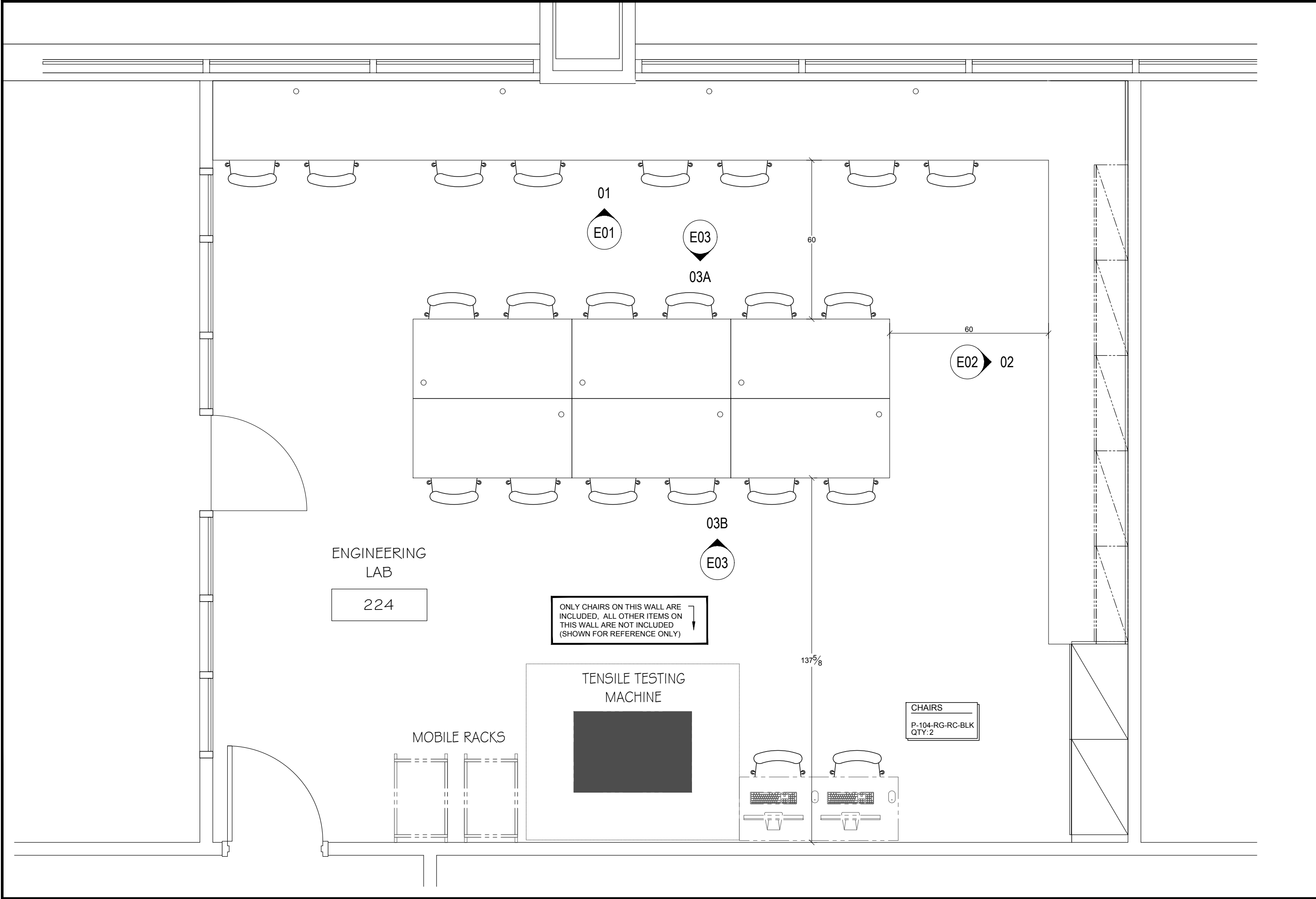
CHECKED DATE	2016-04-21
CHECKED BY:	T. MOYERS
DATE	2016-04-21
DRAWN BY:	T. MOYERS
PM	---

#	ISSUE DATE	BY	REMARKS
6			
5			
4			
3			
2			
1			

DRAWING TITLE:	TYPICAL SECTIONS
PROJECT TITLE:	USCA ENGINEERING LAB 224 AIKEN, SOUTH CAROLINA
SCALE:	3/8"=1'-0"
KSC#:	*
PTN#:	16030410
SHEET NO	S01

THIS PRINT IS LOANED SUBJECT TO RETURN ON DEMAND AND UPON THE EXPRESS CONDITION THAT IT WILL NOT BE USED DIRECTLY OR INDIRECTLY IN ANY WAY DETRIMENTAL TO OUR INTERESTS.

E:\Dropbox (NYCOM)\My projects\16030410 USCA Engineering Lab 224\16030410.dwg, 4/22/2016 9:30:50 AM, todd.moyers



CHECKED DATE: _____
CHECKED BY: _____

DATE: 2016-04-21
DRAWN BY: T. MOYERS
PM

#	ISSUE DATE	BY	REMARKS
6			
5			
4			
3			
2			
1			

DRAWING TITLE:
FLOOR PLAN

PROJECT TITLE:
USCA ENGINEERING LAB 224
AIKEN, SOUTH CAROLINA

SCALE:
3/8"=1'-0"

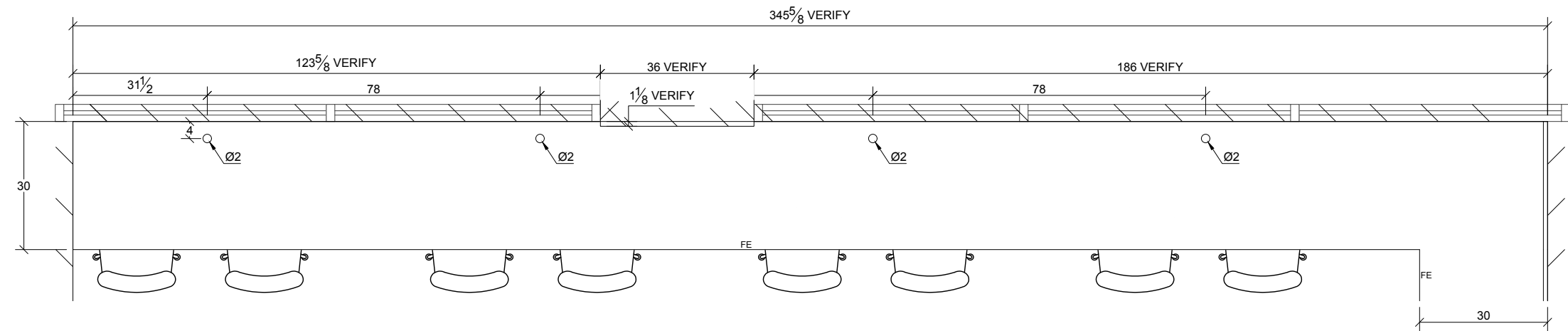
KSC#:

PTN#:
16030410

SHEET NO:
F01

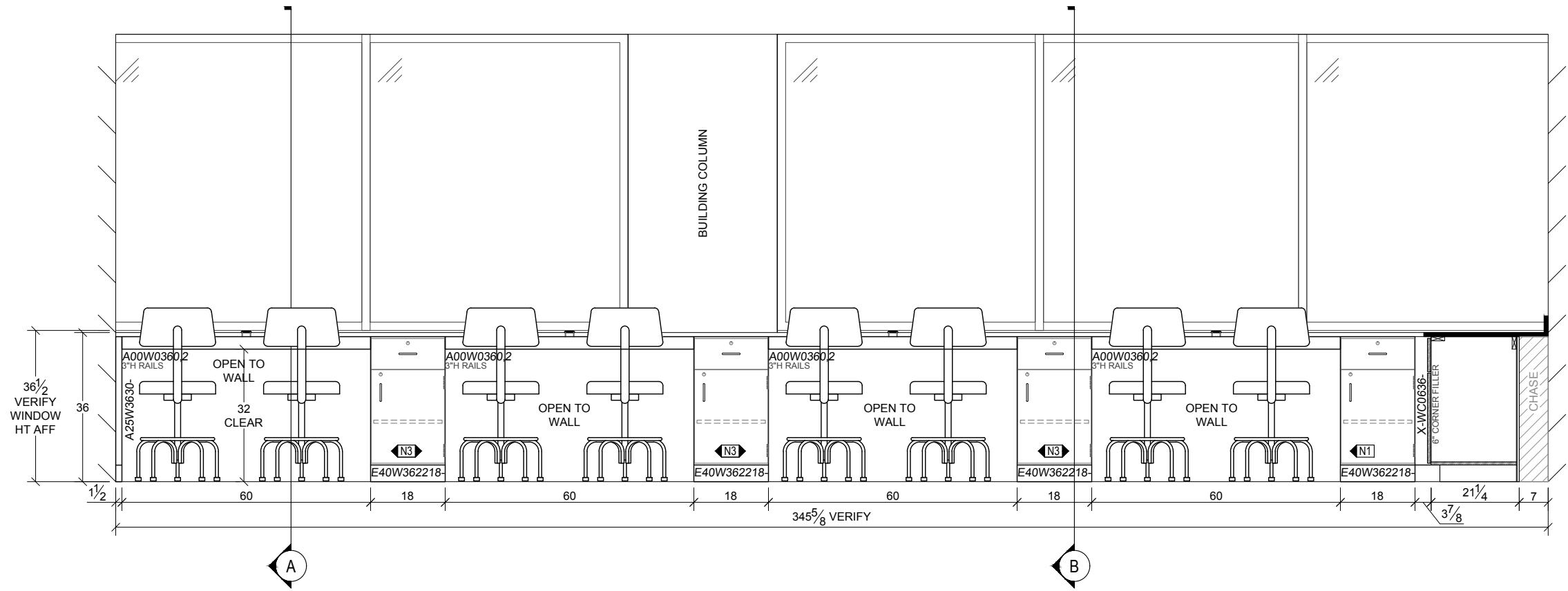
THIS PRINT IS LOANED SUBJECT TO RETURN ON DEMAND AND UPON THE EXPRESS CONDITION THAT IT WILL NOT BE USED DIRECTLY OR INDIRECTLY IN ANY WAY DETRIMENTAL TO OUR INTERESTS.

INSTALLER NOTE:
COUNTER TOP TO BE CUT
AROUND COLUMN IN FIELD



TKB-001
66SF

RSC-SMHOLE_4
SMALL HOLE (LESS THAN 3" DIA)



GROMMET
TG3
QTY: 4
2-3/8" FLIP TOP
GROMMET SET
2" HOLE

CHAIR
NYCOM CHAIR
QTY: 8
P-105-RG-CF-RC-BLK

ELEVATION 01

ROOM NO: 224
ROOM NAME: ENGINEERING LAB
ARCH REFERENCE DETAIL: I/A-105

NYCOM
EQUIPMENT FOR EDUCATIONAL
HEALTH CARE AND INDUSTRIAL
FACILITIES
WWW.NYCOMINC.NET

PROGRESS DRAWING

CHECKED DATE	2016-04-21
CHECKED BY:	T. MOYERS
DATE	2016-04-21
DRAWN BY:	T. MOYERS
PM	
ISSUE DATE	
BY	
REMARKS	

DRAWING TITLE:
ELEVATIONS

PROJECT TITLE:
**USCA ENGINEERING
LAB 224
AIKEN, SOUTH CAROLINA**

SCALE:
3/8" = 1'-0"

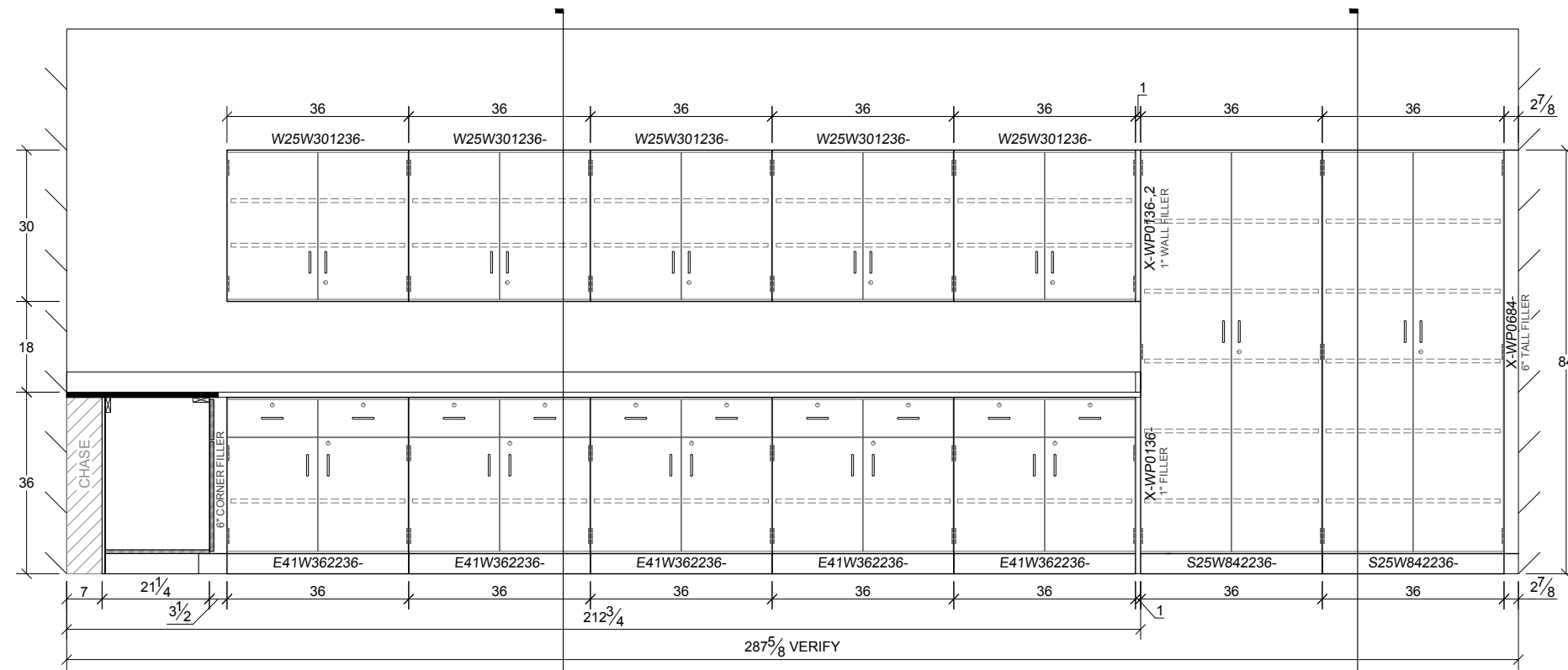
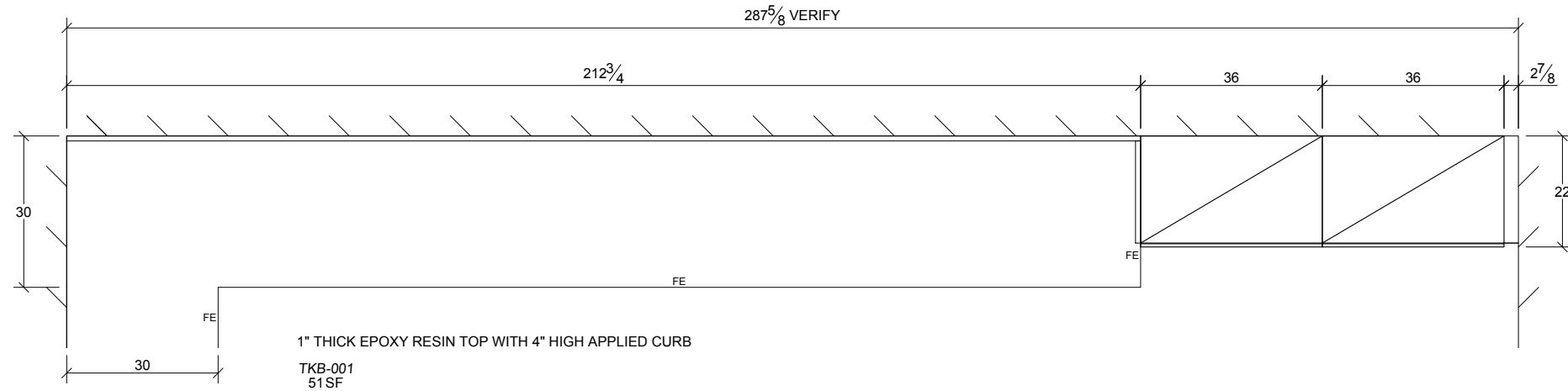
KSC#:
*

PTN#:
16030410

SHEET NO:
E01

THIS PRINT IS LOANED SUBJECT TO RETURN ON DEMAND AND UPON THE EXPRESS CONDITION THAT IT WILL NOT BE USED DIRECTLY OR INDIRECTLY IN ANY WAY DETRIMENTAL TO OUR INTERESTS.

E:\Dropbox (NYCOM)\My projects\16030410 USCA Engineering Lab 224\16030410.dwg, 4/22/2016 9:30:51 AM, tod.d.moyers



ELEVATION 02

ROOM NO: 224
 ROOM NAME: ENGINEERING LAB
 ARCH REFERENCE DETAIL: I/A-105

CHECKED DATE	DATE
CHECKED BY:	DRAWN BY:
	T. MOYERS
	PM

6	ISSUE DATE	REMARKS
5		
4		
3		
2		
1		

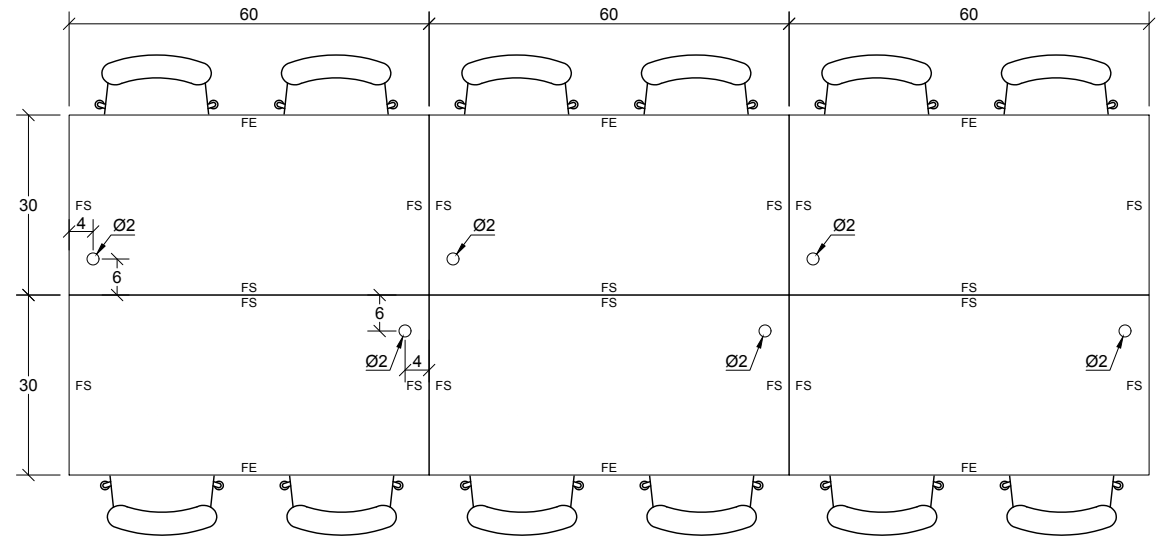
DRAWING TITLE:	ELEVATIONS
PROJECT TITLE:	USCA ENGINEERING
	LAB 224
	AIKEN, SOUTH CAROLINA
SCALE:	3/8"=1'-0"
KSC#:	*
PTN#:	16030410
SHEET NO	E02

THIS PRINT IS LOANED SUBJECT TO RETURN ON DEMAND AND UPON THE EXPRESS CONDITION THAT IT WILL NOT BE USED DIRECTLY OR INDIRECTLY IN ANY WAY DETRIMENTAL TO OUR INTERESTS.

#	ISSUE DATE	BY	REMARKS
6			
5			
4			
3			
2			
1			

DRAWING TITLE: ELEVATIONS
PROJECT TITLE: USCA ENGINEERING LAB 224 AIKEN, SOUTH CAROLINA
SCALE: 3/8"=1'-0"
KSC#: *
PTN#: 16030410
SHEET NO: E03

THIS PRINT IS LOANED SUBJECT TO RETURN ON DEMAND AND UPON THE EXPRESS CONDITION THAT IT WILL NOT BE USED DIRECTLY OR INDIRECTLY IN ANY WAY DETRIMENTAL TO OUR INTERESTS.

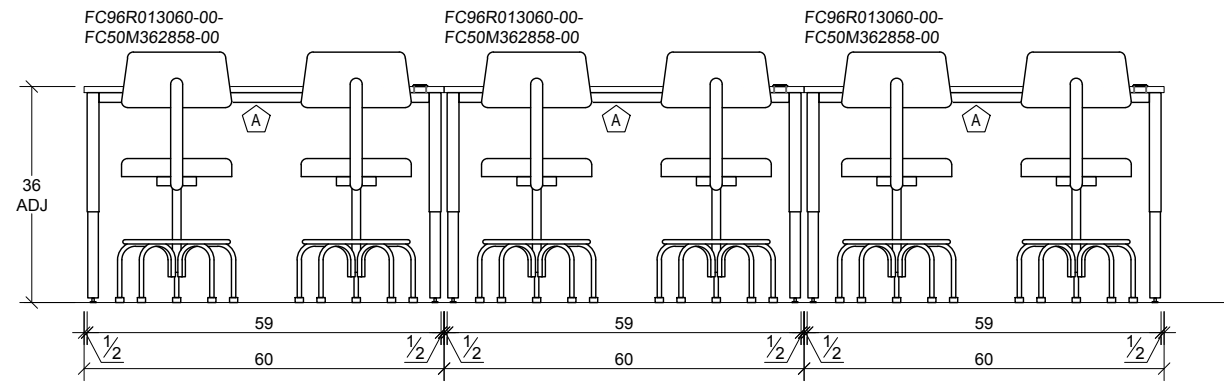


RSC-SMHOLE_6
SMALL HOLE (LESS THAN 3" DIA)

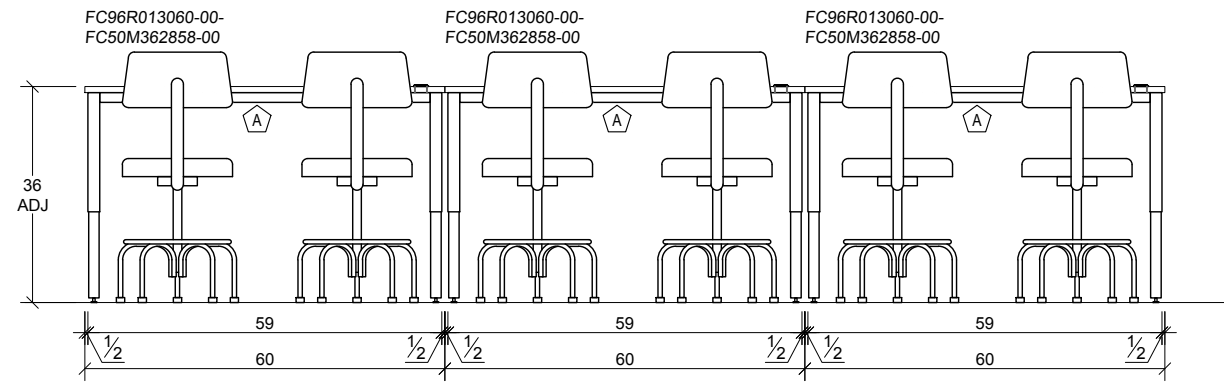
GROMMET
TG3
QTY: 6
2-3/8" FLIP TOP
GROMMET SET
2" HOLE

POWER STRIP
A BED 481615a-6
QTY: 6
POWER STRIP MOUNTED
UNDER EACH TABLE

CHAIR
NYCOM CHAIR
QTY: 12
P-105-RG-CF-RC-BLK



ELEVATION 03A



ELEVATION 03B

ELEVATION 03
ROOM NO: 224
ROOM NAME: ENGINEERING LAB
ARCH REFERENCE DETAIL: I/A-105