

**University of South Carolina Innovation Center Park**  
**Project Number: H27-Z263**  
**Project Manager: Emily Jones**

**Addendum Number Three (3)**

DATE: April 20, 2016

FROM: Aimee B. Rish, Procurement Specialist

TO: All Bidders

The following items add to, modify, clarify, or otherwise alter the Drawings and/or specifications and will become a part of the Contract Documents. Where a portion of the Drawings and/or specifications is added to, modified, clarified, or otherwise altered, the portion not so affected shall remain. Bidder shall include all effects that these items may have on his proposal.

**General/Clarification:**

1. Bidders are advised that the current site condition has changed since the pre-bid meeting on March 30. The current site condition is highly compacted native soil with 1.5" depth of pine bark mulch. The Contractor may re-use the pine bark mulch for planting beds. Compacted soils shall be tilled and mixed with topsoil to a depth of 18" prior to installation of all landscape material.
2. The Owner will provide the chain link construction site fencing with wind screening as described in the USC Supplementary General Conditions.
3. The following questions (in italics) were received from bidders:
  - A. *On Sheet H2.01, Detail 7: The plans call for a Hanover prest paver 4"x8". The smallest paver in this design is 5 7/8"x17 5/8". Can you please clarify?*  
Refer to the following resource for the Prest Brick Pavers size as specified:  
[http://www.hanoverpavers.com/images/PDFs/6601-pb\\_spec.pdf](http://www.hanoverpavers.com/images/PDFs/6601-pb_spec.pdf)
  - B. *The specs for thermal full color, no brown tones. It's impossible to do full color with no brown. That leaves the owner with blue or lilac. Can you please clarify?*  
Referring to Natural Stone pavers, we will accept full color, just not majority brown.
  - C. *The plans call for Mexican beach pebbles and river rock in the same area. Please clarify, do you want one or both?*  
River Rock shall be used. Contractor to provide a sample for Architect/Owner approval.
  - D. *Is polished steel to be understood as stainless steel?*  
Yes, Polished Stainless Steel is the specified finish.

**Project Manual:**

1. Delete Section 05 73 00 Decorative Metal Handrails from the Project Manual and replace with the attached Section 05 72 00 Ornamental and Monumental Handrails, dated April 19, 2016

**Drawings:**

1. Revision: Reference the following drawing sheets. Replace them with the revised Sheets dated April 20, 2016. These sheets are attached to the end of the Addendum.
  - a. H1.00 Cover Sheet
  - b. D1.01 Demolition Plan
  - c. H1.01 Hardscape Plan
  - d. H2.01 Hardscape Details
  - e. H3.01 Layout Plan
  - f. H3.02 Grading Plan
  - g. L1.01 Landscape Plan
  - h. L2.01 Landscape Details
  - i. IR1.01 Extent of Irrigation
2. Clarification: Refer to Sheet H2.01, Detail 8, Granite Medallion. The granite shall be 2" thick and installed on a mortar bed atop a 4" concrete slab. The granite medallion shall be priced as Alternate #3 as an 'Add Alternate.'

**END OF ADDENDUM Number Three (3)**

<b>Total pages:</b>	<b>Addendum text</b>	<b>2 pages (8-1/2 x 11)</b>
	<b>Section 057200</b>	<b>6 pages (8-1/2 x 11)</b>
	<b>Drawings</b>	<b>9 sheets (30 x 42)</b>

## SECTION 05720 - ORNAMENTAL& MONUMENTAL HANDRAILS

### PART 1 – GENERAL

#### 1.1 SUMMARY

A. Section Includes:

1. Custom fabricated stainless steel handrails

B. References:

1. AMP 500-06 – NAAMM/NOMMA Metal Finishes Manual – co-published by the National Association of Architectural Metal Manufactures, 8 South Michigan Avenue, Suite 1000, Chicago, IL 60603 [www.naamm.org](http://www.naamm.org) and the National Ornamental & Miscellaneous Metals Association, 1535 Pennsylvania Avenue, McDonough, GA 30253 [www.nomma.org](http://www.nomma.org)
2. July 23 2004 Americans with Disabilities Act and Architectural Barriers Act Accessibility Guidelines – United States Access Board – 1331 F Street, NW, Suite 1000, Washington, DC 20004-1111
3. ICC/ANSI A117.1-2003 - International Code Council – 500 New Jersey Avenue NW, 6th Floor, Washington, DC 20001-2070 [www.iccsafe.org](http://www.iccsafe.org)
4. 2006 International Building Code - International Code Council – 500 New Jersey Avenue NW, 6th Floor, Washington, DC 20001-2070 [www.iccsafe.org](http://www.iccsafe.org)

#### 1.2 DESIGN PERFORMANCE REQUIREMENTS

A. General: Handrails shall be designed to withstand the structural loads listed below and the applicable building codes enforced by the Authority Having Jurisdiction.

1. Concentrated Load: A 200 lbf load applied at any point along the handrail in any direction.
2. Uniform Load: A 50 lbf-ft applied along the handrail in any direction.
3. Loads: Concentrated and uniform loads need not be assumed to act concurrently.

B. Engineer Certification: The fabricator's shop drawings shall be reviewed and certified by a registered structural engineer licensed in the state in which the project is located and who is experienced in the design of this work.

C. Control of Corrosion: Prevent galvanic action and other forms of corrosion by insulating metals and other materials from direct contact with incompatible materials.

- D. Thermal Movements: Exterior handrails shall be designed to allow for thermal movements resulting from changes 120 degree F (49 C) in ambient and 180 degree F (82 C) surface temperatures. Base engineering calculation on surface temperatures of materials due to both solar heat gain and nighttimes-sky heat loss.

### 1.3 SUBMITTALS

#### A. Shop Drawings:

1. Shall be specifically prepared for this project.
2. Shall include; plan views, elevations, connections, material, details for fabrication, details of attachment to non handrail elements, and installation notations.
3. Drawings shall be reviewed and certified by a registered structural engineer licensed in the state in which the project is located and also provide copies of the structural calculations.

#### B. Sample for Verification:

1. Provide one fully assembled sample of the handrail for approval by the architect of record made from full size material, including post, brackets, bases, caps, support bars or channels. Show method of connection, fasteners, welds and finish, sample need not be full height.

#### C. Handrail Installation Location:

1. Provide installation paperwork for fabricated handrail sections which correspond with markings on packaging showing the location and matching sections of handrail that attach together for installers.

### 1.4 QUALITY ASSURANCE

- A. All fabricators may be acceptable provided they have a minimum of 5 years documented experience specializing in the fabrication of ornamental and monumental handrails and are approved and accepted by the architect of record.
- B. Installers shall be fabricator trained or an installer deemed acceptable by the fabricator to perform the installation.

### 1.5 DELIVERY, STORAGE AND HANDLING

- A. Deliver and store handrails to site in fabricators original packaging, with labels clearly identifying fabricators name, project number and installation paperwork reference number for proper identification for installation.
- B. Store handrails indoors in a secure, clean and dry area until ready for installation.

- C. Protect handrails and finish from damage during handling and installation.

## 1.6 COORDINATION & SEQUENCING

- A. Installer and or contractor to take field measurements and forward documentation to fabricator to prepare required shop drawings for submittals.
- B. Installer and or contractor, whomever field measured for the handrails, shall verify shop drawings prepared by fabricator for accuracy to field measurements taken and approve shop drawings for fabrication to commence.
- C. Fabricator to provide templates and documentation required for proper installation for the affected trades.
- D. Contractor to coordinate work with other operations and installation of adjacent materials to avoid damage to handrails.

## PART 2 – PRODUCT(S)

### 2.1 FABRICATOR

- A. All Fabricators may be acceptable provided they have a minimum of 5 years documented experience specializing in the fabrication of ornamental and monumental handrails and are approved and accepted by the architect of record.
- B. Substitutions: Are not permitted without certified documentation showing proof of a minimum of 5 years experience specializing in the fabrication of ornamental and monumental handrails and the certified documentation is reviewed, verified and approved by the architect of record that the substitution is qualified to perform the work.

### 2.2 MATERIALS

- A. Stainless Steel:
  - 1. Tubing: ASTM A554, Type 304 or 316
  - 2. Bars, Shapes and Moldings: ASTM A276, Type 304 or 316

## 2.3 FASTENERS

### A. General: Provide the following:

1. Stainless Steel Components: Type 304 or 316 stainless steel fasteners.

Fasteners for Anchoring Handrails to Other Construction: Select fasteners of type, grade and class required to produce connections suitable for anchoring handrails to other types of construction indicated and capable of withstanding design loads.

- ### B. Provide fasteners for interconnecting handrail components and for attaching handrails to other work. Concealed fasteners shall be used unless exposed fasteners are unavoidable or are a standard fastening method for handrail connection.

## 2.2 FABRICATION

- ### A. Fit and assemble handrails in shop to largest practical size for delivery to site to minimize field splicing and assembly. Disassemble handrails and clearly mark sections for reassembly and coordinated installation.
- ### B. Mechanical Connections: Flush countersink screws or bolts consistent with design, unless otherwise indicated on shop drawings. Fabricate to produce flush, smooth, rigid, hairline joints.
- ### C. Cut, drill and punch metals cleanly and accurately. Remove burrs and ease edges to a radius of approximately 0.01 inch unless otherwise indicated.
- ### D. Brackets, Flanges, Fittings and Anchors: Fabricator to provide post, wall brackets, flanges and miscellaneous fittings to connect handrails to other construction.
- ### E. Provide post or brackets to connect handrails to concrete or masonry. Post or brackets need withstanding loads imposed by handrails.
- ### F. Cut, reinforce, drill and tap components as indicated on shop drawings to receive finish hardware, screws and similar items.
- ### G. Form simple and compound curves by bending members in jigs to produce uniform curvature for each repetitive configuration; maintain cross section of member throughout bend controlling buckling, twisting, cracking, or deformation to exposed surfaces.
- ### H. Fabricate connections that are exposed to weather in a manner to exclude water. Provide weep holes where water may accumulate. Close all exposed ends of handrails.

## 2.4 SHOP FINISHING

- A. Reference NAAMM/NOMMA “AMP 500-06 Metal Finishes Manual” for designating finishes.
- B. Mechanical finishes on exposed surfaces shall be protected for shipment and handling with a temporary protective covering or wrap.
- C. Appearance of Finished Handrails: Variations in appearance of abutting or adjacent pieces are acceptable if they are within one-half of the range of approved sample. Noticeable variations in same piece are acceptable if they are within the range of approved sample and are assembled or installed to minimize contrast.
- A. Stainless Steel
  - 1. Grind and remove tool and die marks or stretch marks or blend in to finish
  - 2. Linearly Textured number 4 finish with 01X butchers wax for top coating

## PART 3 EXECUTION

### 3.1 EXAMINATION

- A. Prior to commencement of installation; installer and or contractor shall examine all surfaces and substrates the handrails will be secured and mounted to.
- B. All unsatisfactory surfaces, substrates and structures shall be reported to the Architect of record before proceeding.
- C. Unsatisfactory surfaces, substrates and structures not found prior to start of installation, but discovered during installation, shall be reported to the Architect of record before proceeding.

### 3.2 INSTALLATION

- A. Install in accordance with fabricators shop drawings.
- B. Fit exposed connections together to form tight, hairline joints.
- C. Set handrails in place free of racking and accurately install in proper location and alignment.
- D. Do not cut, grind or weld handrail surfaces that have been finished in the shop and that are intended for mechanical field connection as noted on shop drawings.
- E. Set post plumb within a tolerance of 3/32 of an inch in 42 inches.
- F. Handrails variations from parallel with the nosing line of steps or slope of ramps shall not exceed ¼ inch in 12 feet.
- G. Coat concealed surfaces of metals in contact with grout, concrete, masonry, wood, or dissimilar metals, with a corrosion protective coating.
- H. Handrails to be adjusted before anchoring to ensure matching alignment with abutting joints.

- I. Where fasteners are used to secure handrails in place, anchorage devices and or fasteners are to be used where necessary for securing handrails and transferring loads to in-place construction.

### 3.3 POST AND BRACKET ANCHORAGE

#### A. Anchoring Post:

1. Core & Grout: Core drill holes not less than 5 inches deep and  $\frac{3}{4}$  inch larger than the outside diameter of the post when installing in masonry. Clean core drilled hole of loose material, set handrail post in place, fill hole with non-shrink, nonmetallic grout, mixed and set per grout manufactures written instructions.
2. Flange & Base: Anchor handrail flanges or bases in place with fasteners noted in shop drawings and approved by the engineer for installation.

#### B. Anchoring Wall Brackets:

1. For wood or metal stud partitions, set lag bolts or hangers in to wood backing to be supplied and installed by carpenters during framing of partitions.
2. For solid masonry, use drilled in shields with hanger or lag bolts.

### 3.6 CLEANING

- A. Powder coated handrails: Clean surfaces with soap and water after installation is completed.
- B. Bronze & stainless steel handrails: Clean handrails per fabricators recommendations and in a manner that leaves an undamaged and uniform finish matching approved sample.

### 3.7 PROTECTION

- A. Protect finishes of handrails from damage during construction with temporary protective coverings approved by the fabricator.
- B. At time of Substantial Completion installer to remove protective coverings upon written request from the contractor and touch-up, repair or replace damaged products were deem necessary.



# INNOVATION CENTER PARK

COLUMBIA, SOUTH CAROLINA

	DRAWINGS ISSUED												DRAWINGS ISSUED											
H1.00 - COVER SHEET																								
C1.00 - EXISTING CONDITIONS PLAN																								
C2.00 - SITE PLAN																								
C3.00 - GRADING PLAN																								
C4.00 - STORM DRAINAGE PLAN																								
C5.00 - EROSION AND SEDIMENT CONTROL PLAN																								
D1.01 - DEMOLITION PLAN																								
H1.01 - HARDSCAPE PLAN																								
H2.01 - HARDSCAPE DETAILS																								
H2.02 - HARDSCAPE DETAILS																								
H3.01 - LAYOUT PLAN																								
L1.01 - LANDSCAPE PLAN																								
L2.01 - LANDSCAPE DETAILS																								
IR1.01 - EXTENT OF IRRIGATION																								
E0.01 - ELECTRICAL SYMBOLS & LEGENDS																								
E0.02 - ELECTRICAL SITE PLANS																								

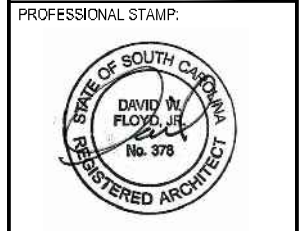
BID DOC. SET  
ADDENDUM #1

BID DOC. SET

GENERAL NOTES:	SHOP DRAWINGS & MISC. SUBMITTALS
<p>1. WRITTEN DIMENSIONS PREVAIL OVER SCALED DIMENSIONS. NOTIFY LANDSCAPE ARCHITECT OF ANY DISCREPANCIES.</p> <p>2. THE CONTRACTOR BARES ALL RESPONSIBILITY FOR VERIFYING ALL UNDERGROUND UTILITIES, PIPES, STRUCTURES, WALKS AND CURBS IN THE FIELD PRIOR TO CONSTRUCTION. ANY DAMAGE TO BEFORE MENTIONED INFRASTRUCTURE THAT ARE TO REMAIN SHALL BE REPAIRED IMMEDIATELY AT NO EXPENSE TO THE OWNER. SITE SOLUTION ASSUMES NO RESPONSIBILITY FOR ANY UTILITIES NOT SHOWN ON PLANS.</p> <p>3. ALL PROPOSED AND FINISHED GRADES ARE BASED ON INFORMATION PROVIDED BY THE OWNERS SURVEY AND/OR CIVIL ENGINEER. ANY DISCREPANCIES IN ACTUAL FIELD MEASUREMENTS ARE TO BE REPORTED TO THE LANDSCAPE ARCHITECT IMMEDIATELY.</p> <p>4. PRIOR TO COMMENCEMENT OF HARDSCAPE CONSTRUCTION, ALL FOOTINGS AND WALLS ARE TO BE SURVEYED, LAID OUT AND STAKED FOR REVIEW BY OWNER, ARCHITECT AND LANDSCAPE ARCHITECT. CONTRACTOR SHALL ASSUME RESPONSIBILITY FOR ANY DEMOLITION, ADJUSTMENTS OR RECONSTRUCTION RESULTING FROM UNAUTHORIZED CONSTRUCTION ACTIVITIES.</p> <p>5. CONTRACTOR SHALL BE RESPONSIBLE FOR ALL QUANTITIES PER DRAWINGS AND SPECIFICATIONS. ANY QUANTITIES PROVIDED BY SITE SOLUTIONS ARE FOR CONVENIENCE ONLY. NOTIFY LANDSCAPE ARCHITECT OF ANY DISCREPANCIES.</p> <p>6. EASEMENTS, BUILDING SETBACKS, CURB AND GUTTER AND UNDERGROUND UTILITIES HAVE BEEN SUPPLIED TO SITE SOLUTIONS BY THE PROJECT CIVIL ENGINEER. REFER TO CIVIL DRAWINGS FOR ADDITIONAL SITE INFORMATION.</p> <p>7. CONTRACTOR TO VERIFY THAT A MIN. DEPTH OF 36" OF SPECIFIED TOP SOIL MIX IS PROVIDED FOR ALL PROPOSED PLANTING AREAS ON GRADE UNLESS OTHERWISE NOTED IN DRAWINGS.</p> <p>8. ALL LANDSCAPE AREAS EITHER ON-STRUCTURE OR WITHIN FIBERGLASS AND CONCRETE PLANTERS TO BE LIGHT WEIGHT SOIL MIX.</p> <p>9. CONTRACTOR TO PROVIDE AS BUILT CONDUIT LAYOUT TO PROPOSED SITE LIGHTING PRIOR TO APPROVAL. COORDINATE W/ OWNER WHERE TO TIE IN TO ELECTRIC SERVICE.</p> <p>10. ALL PLANTED POTS TO BE HAND WATERED AND MAINTAINED.</p> <p>11. SITE FURNITURE (BENCH, UMBRELLAS, ETC.) AND SITE LIGHTING TO BE AN ALTERNATE</p> <p>12. ALL SURFACES TO BE POWER-WASH CLEANED AT SUBSTANTIAL AND FINAL COMPLETION</p>	<p>CONTRACTOR SHALL PREPARE AND PROVIDE SHOP DRAWINGS FOR THE REVIEW BY THE ARCHITECT AND LANDSCAPE ARCHITECT FOR THE FOLLOWING ITEMS:</p> <ol style="list-style-type: none"> <li>BRICK RETAINING WALL</li> <li>CONCRETE RETAINING WALL</li> <li>LANDSCAPE MATERIAL PHOTOS</li> <li>ADA RAMP</li> <li>STEPPING STONE</li> <li>PAVERS</li> <li>LIGHTING CUT SHEETS</li> <li>LIGHT POSTS</li> <li>HANDRAILS</li> <li>CAST STONE CAPS</li> <li>STEPS AND RAILING</li> </ol>
	<p><b>SAMPLES</b></p> <p>CONTRACTOR SHALL PROVIDE SAMPLES FOR THE REVIEW BY THE OWNER, ARCHITECTS AND LANDSCAPE ARCHITECT FOR THE FOLLOWING ITEMS:</p> <ol style="list-style-type: none"> <li>CONCRETE</li> <li>SIDEWALK</li> <li>PAVERS</li> <li>RIVER ROCK</li> <li>BRICK VENEER</li> <li>CAST STONE CAP</li> </ol>
	<p><b>MOCK UPS</b></p> <p>CONTRACTOR SHALL PREPARE 4' X 4' min. MOCK UPS FOR THE REVIEW BY THE OWNER, ARCHITECTS AND LANDSCAPE ARCHITECT FOR THE FOLLOWING ITEMS:</p> <ol style="list-style-type: none"> <li>CONCRETE</li> <li>STEP STONES</li> <li>PAVERS</li> <li>BRICK VENEER</li> </ol>
<p><b>LAYOUT NOTES:</b></p> <p>1. THE CONTRACTOR SHALL BE RESPONSIBLE FOR OBTAINING NECESSARY PERMITS, GIVING NOTICES, AND PAYING FEES. THE CONTRACTOR SHALL COMPLY WITH ALL CITY, COUNTY AND STATE BUILDING CODES AND ORDINANCES RELATING TO THIS CONSTRUCTION PROJECT.</p> <p>2. IN EVENT OF ANY DISCREPANCIES FOUND IN THE DRAWINGS, OR IF PROBLEMS ARE ENCOUNTERED DURING CONSTRUCTION, THE CONTRACTOR SHALL BE REQUIRED TO NOTIFY THE LANDSCAPE ARCHITECT BEFORE PROCEEDING WITH THE WORK.</p> <p>3. WHERE PLAN DETAILS DIFFER FROM CITY STANDARDS, THE LATTER SHALL BE SUBSTITUTED IN APPROVED IN WRITING BY LANDSCAPE ARCHITECT.</p> <p>4. DO NOT SCALE DRAWINGS. IF DIMENSIONS ARE IN QUESTION, THE CONTRACTOR SHALL BE RESPONSIBLE FOR OBTAINING CLARIFICATION FROM THE ARCHITECT BEFORE PROCEEDING WITH THE WORK.</p> <p>5. NO SUBSTITUTIONS OF ANY MATERIALS OR PRODUCTS SHALL BE ALLOWED WITHOUT THE WRITTEN CONSENT OF THE LANDSCAPE ARCHITECT.</p> <p>6. CONTRACTOR TO LAY OUT ALL PROPOSED WALK, WALLS, FENCING, RAILING, HANDRAILS, LIGHTING, SITE FURNISHINGS, PAVERS, STEPS, LANDSCAPE, TRELIS, AND IRRIGATION AND RECEIVE OWNER AND LANDSCAPE ARCHITECTS APPROVAL PRIOR TO CONSTRUCTION.</p>	

DAVID W. FLOYD  
LANDSCAPE ARCHITECTURE- LAND PLANNING  
37 S. Northcreek Parkway  
300 Northcreek Blvd, 300  
Atlanta, Georgia 30327  
T: 404.705.9411  
F: 404.705.9481

COPYRIGHT © 2016 BY DAVID W. FLOYD, LANDSCAPE ARCHITECTURE. ALL RIGHTS RESERVED. THIS DOCUMENT INCLUDING ELECTRONIC AND HARD-COPY FORMS IS THE PROPERTY OF DAVID W. FLOYD, AND ONLY FOR USE ON THE PROJECT SPECIFIED HEREIN. IT IS NOT TO BE USED ON OTHER PROJECTS OR EXTENDED TO THIS PROJECT, IN WHOLE OR IN PART, EXCEPT BY THE EXPRESSED WRITTEN AGREEMENT WITH DAVID W. FLOYD. THIS DOCUMENT AND REPRODUCTIONS SHALL NOT BE CONSIDERED A CONTROLLED DOCUMENT.



**Innovation Center Park**  
 PREPARED FOR  
 University of South Carolina

SHEET STATUS			
MARK	DATE	BY	RELEASE
A	06/02/16	WDS	BIDD DOCUMENTS
B	06/23/16	WDS	ADDENDUM 1

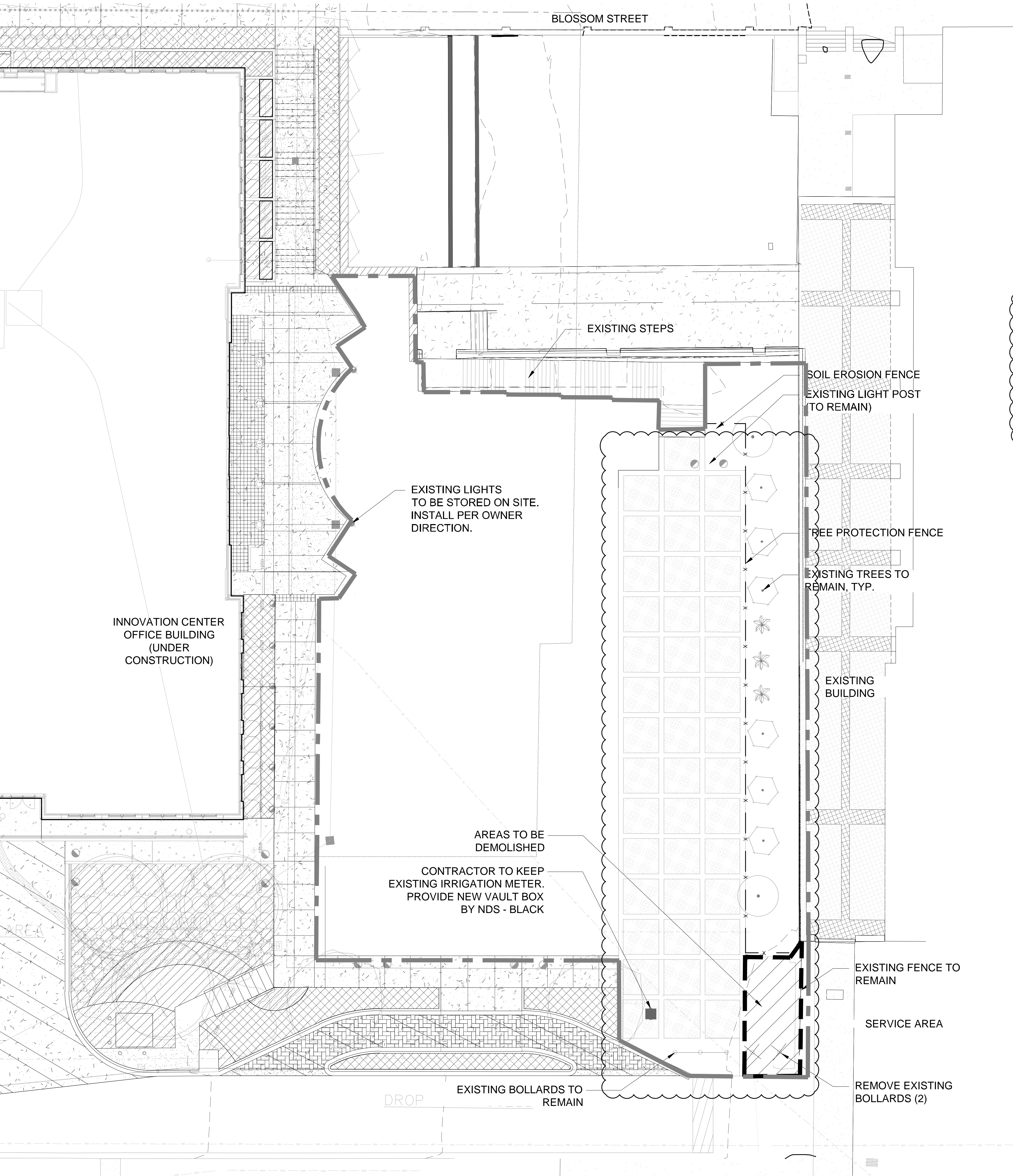
SHEET TITLE:  
**COVER SHEET**

PROJECT NUMBER:  
14017

**H1.00**

DATE: 02.02.2016  
NOT ISSUED FOR CONSTRUCTION.





- DEMOLITION NOTES:**
1. SITE SOLUTIONS AND ANY OF THEIR CONSULTANTS SHALL NOT BE HELD RESPONSIBLE FOR THE ACCURACY AND/OR COMPLETENESS OF THAT INFORMATION SHOWN HEREON OR ANY ERRORS OR OMISSIONS RESULTING FROM SUCH.
  2. THE CONTRACTOR SHALL CONFORM TO LOCAL CODES, OBTAIN ALL PERMITS, AND GIVE ALL NOTICES REQUIRED FOR EXECUTION OF THE WORK.
  3. ALL MATERIALS BEING REMOVED AND NOT RELOCATED UNDER THE NEW CONSTRUCTION INCLUDING TREES AND SHRUBS, UTILITY STRUCTURES, ETC., SHALL BE FIRST OFFERED TO THE OWNERS REPRESENTATIVE AND IF NOT ACCEPTED SHALL THEN BE PROPERLY DISPOSED OF BY THE CONTRACTOR.
  4. THE CONTRACTOR IS RESPONSIBLE FOR LOCATING ALL CHARTED AND UNCHARTED UTILITIES. TAKE CARE TO PROTECT UTILITIES THAT ARE TO REMAIN. REPAIR ANY DAMAGE ACCORDING TO LOCAL STANDARDS AND AT THE CONTRACTORS EXPENSE. COORDINATE ALL CONSTRUCTION WITH THE APPROPRIATE UTILITY COMPANY.
  5. THE CONTRACTOR SHALL VERIFY THE LIMITS OF DEMOLITION WITH THE OWNERS REPRESENTATIVE PRIOR TO COMMENCEMENT OF WORK.
  6. IN AREAS WHERE EXISTING PAVEMENT, WALKS, OR CURBS ARE TO BE REMOVED, SAW CUT TO PROVIDE A CLEAN EDGE, COORDINATE EXTENT OF PAVEMENT DEMOLITION WITH THE UNIT OF NEW IMPROVEMENTS ON THE SITE LAYOUT.
  7. CONTRACTOR SHALL COORDINATE PHASING OF THE DEMOLITION WITH THE OWNERS REPRESENTATIVE AND LOCAL GOVERNING AGENCY PRIOR TO BEGINNING WORK. DISRUPTION OF EXISTING UTILITY SERVICES AND TRAFFIC PATTERNS SHALL BE MINIMIZED TO THE EXTENT POSSIBLE AND INITIATED ONLY AFTER APPROVAL BY THE LOCAL GOVERNING AGENCY AND THE UTILITY COMPANIES.
  8. CAVITIES LEFT BY STRUCTURE REMOVAL SHALL BE SUITABLE BACKFILLED AND COMPACTED IN ACCORDANCE WITH THESE PLANS AND SPECIFICATIONS.
  9. SURVEY PROVIDED BY STEVENS WILKERSON APRIL 2014
  10. CONTRACTOR TO CLEAN ALL AREA OF DEBRIS EACH DAY.
  11. SILT FENCE AND TREE PROTECTION FENCE TO BE INSTALLED PRIOR TO COMENCEMENT OF DEMOLITION OF SITE PER CITY STANDARDS.

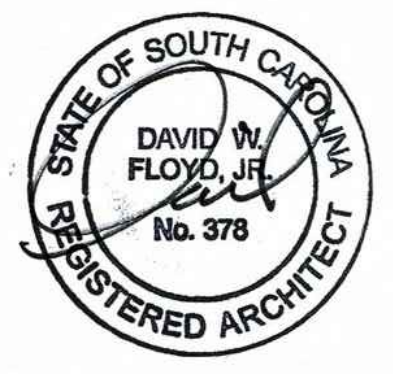
12. CURRENT SITE CONDITION IS COMPACTED NATIVE SOIL WITH 1.5" DEPTH OF PINE BARK MULCH. CONTRACTOR MAY REUSE THE PINE BARK MULCH FOR PLANTING BEDS. IF THE MULCH IS TO BE REUSED, THE CONTRACTOR WILL BE RESPONSIBLE TO STORE THE MULCH AT THE DIRECTION OF THE OWNER AND LANDSCAPE ARCHITECT. COMPACTED SOIL TO BE TILLED AND MIXED WITH TOPSOIL TO A DEPTH OF 18" PRIOR TO THE INSTALLATION OF ALL LANDSCAPE MATERIAL.

**DEMOLITION DATA:**  
**HARDSCAPE:**  
 AREA DEMOLISHED (APPROX.): 412 S.F

**DAVID W. FLOYD**  
 LANDSCAPE ARCHITECTURE + LAND PLANNING  
 3715 Northlake Parkway Atlanta, Georgia 30327  
 T: 404-705-9411 F: 404-705-9491

COPYRIGHT © 2006 BY DAVID W. FLOYD, LANDSCAPE ARCHITECTURE. ALL RIGHTS RESERVED. THIS DOCUMENT (INCLUDING ELECTRONIC AND REPRODUCTIONS) IS THE PROPERTY OF DAVID W. FLOYD, AND ONLY FOR USE ON THE PROJECT SPECIFIED HEREIN. IT IS NOT TO BE USED ON OTHER PROJECTS OR EXTENSIONS TO THIS PROJECT IN WHOLE OR IN PART, EXCEPT BY THE EXPRESSED WRITTEN AGREEMENT WITH DAVID W. FLOYD. THIS DOCUMENT AND REPRODUCTIONS SHALL NOT BE CONSIDERED A CERTIFIED DOCUMENT.

PROFESSIONAL STAMP:



# Innovation Center Park

PREPARED FOR  
University of South Carolina

**SHEET STATUS**

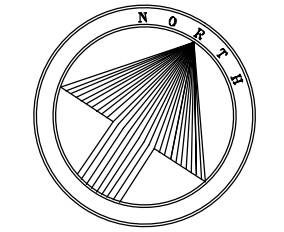
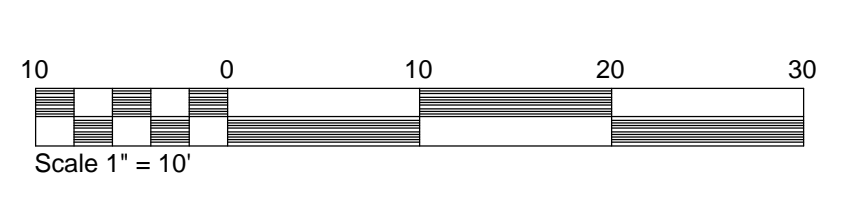
MARK	DATE	BY	RELEASE
A	03/03/2016	MDS	BID DOCUMENTS
B	04/20/2016	MDS	ADDENDUM 1

**SHEET TITLE:**  
**DEMOLITION PLAN**

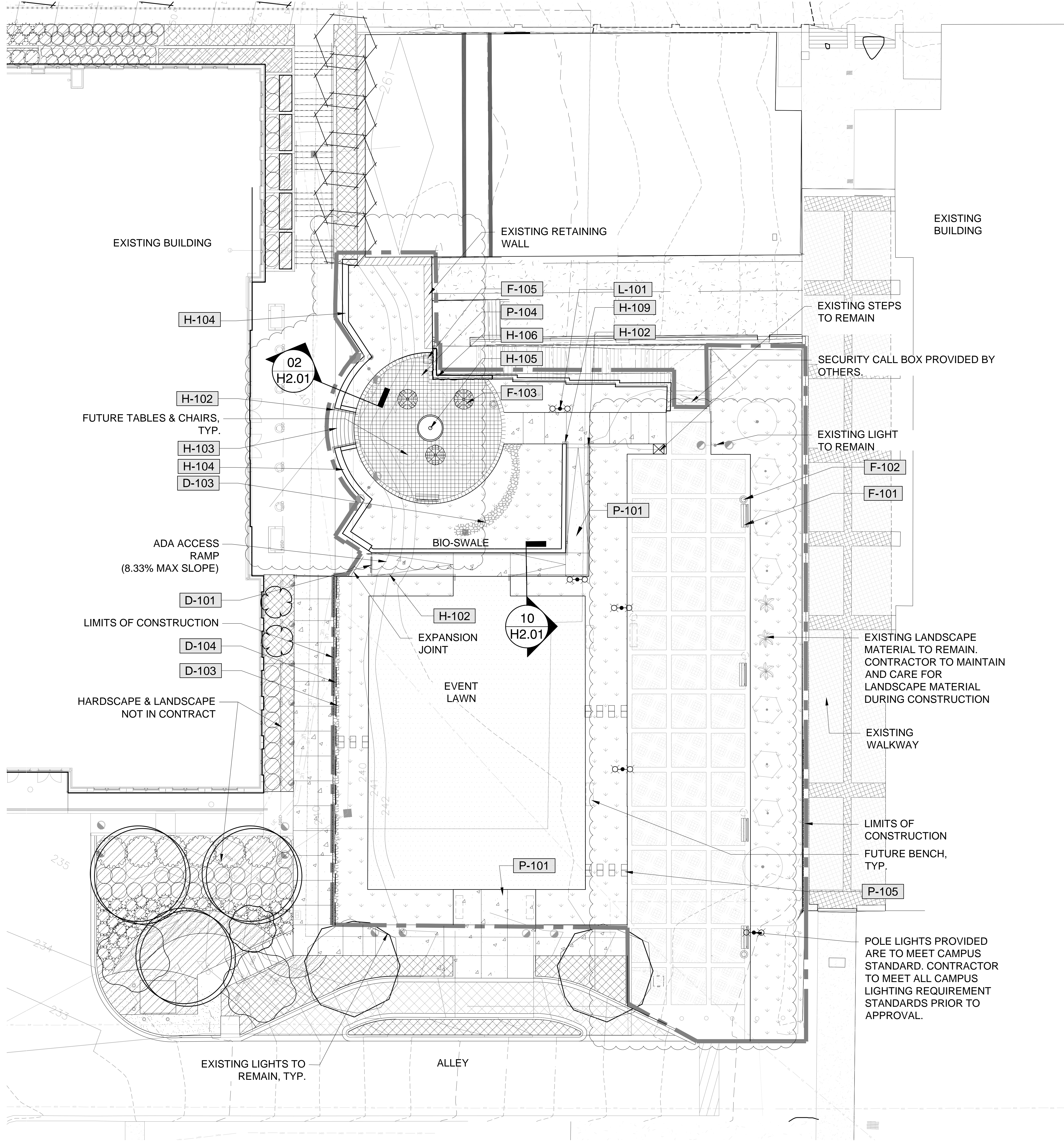
**PROJECT NUMBER:**  
 14017

**D1.01**

**DATE:** 02.02.2016  
 NOT ISSUED FOR CONSTRUCTION.







**REFERENCE NOTES SCHEDULE**

SYMBOL	DRAINAGE DESCRIPTION	DETAIL
D-101	TRENCH DRAIN - REFER TO CIVIL	
D-102	AREA DRAIN - REFER TO CIVIL	
D-103	MEXICAN BEACH PEBBLE RIVER ROCK - 1.5" - 3" DIA. 3" DEPTH	
D-104	PERFORATED DRAIN PIPE, REFER TO CIVIL.	

SYMBOL	SITE FURNISHINGS DESCRIPTION	DETAIL
F-101	BENCHES - PRICE AS ALTERNATE #2	3/H2.02
F-102	TRASH CANS - PRICE AS ALTERNATE #2	1/H2.02
F-103	TABLES WITH UMBRELLA AND CHAIRS - PRICE AS ALTERNATE #2	5/H2.02
F-105	BIG BELLY TRASH COMPACTOR - BY OWNER	2/H2.02

SYMBOL	HARDSCAPE DETAILS DESCRIPTION	DETAIL
H-102	HANDRAIL	5/H2.01
H-103	CONCRETE STEPS	3/H2.01
H-104	BRICK SEAT WALL - BRICK TO MATCH ARCHITECTURE	2/H2.01
H-105	MEDALLION WITH UNIVERSITY LOGO PRICE AS ALTERNATE #2	8/H2.02
H-106	EXISTING RETAINING WALL W/ PAINTED FINISH	1/H2.01
H-109	C.I.P. WALL	10/H2.01

SYMBOL	SITE LIGHTING DESCRIPTION	DETAIL
L-101	POLE LIGHT - PRICE AS ALTERNATE #1	6/H2.02

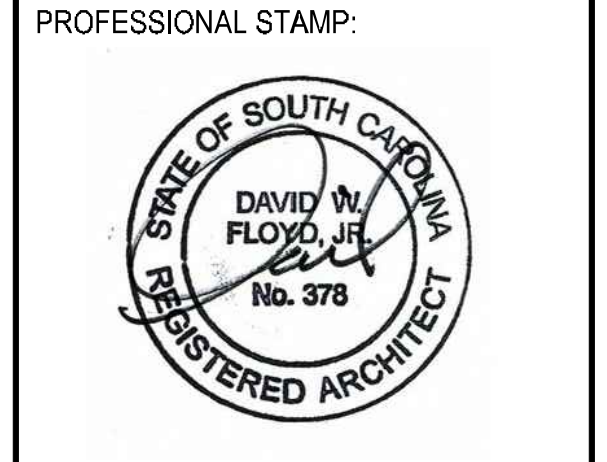
  

SYMBOL	PAVING DESCRIPTION	DETAIL
P-101	CONCRETE WALK	6/H2.01
P-104	SAND SET PAVERS	7/H2.01
P-105	STEPPING STONES	9/H2.01

SITE DATA:	
SITE AREA:	18,274 S.F.
IMPERVIOUS AREA (%):	6,735 S.F. (36%)
EXISTING HARDSCAPE:	4,516 S.F.
ADDITIONAL HARDSCAPE:	2,219 S.F.
LANDSCAPE AREA (%):	11,539 S.F (63%)

**DAVID W. FLOYD**  
 LANDSCAPE ARCHITECTURE- LAND PLANNING  
 3715 Northside Parkway T: 404.705.8411  
 300 Northchase, Bldg. 300 F: 404.705.8491  
 Atlanta, Georgia 30327

COPYRIGHT © 2005 BY DAVID W. FLOYD, LANDSCAPE ARCHITECTURE. ALL RIGHTS RESERVED. THIS DOCUMENT (INCLUDING ELECTRONIC AND REPRODUCTIONS) IS THE PROPERTY OF DAVID W. FLOYD, AND ONLY FOR USE ON THE PROJECT SPECIFIED HEREIN. IT IS NOT TO BE USED ON OTHER PROJECTS OR EXTENSIONS TO THIS PROJECT, IN WHOLE OR IN PART, EXCEPT BY THE EXPRESSED WRITTEN AGREEMENT WITH DAVID W. FLOYD. THIS DOCUMENT AND REPRODUCTIONS SHALL NOT BE CONSIDERED A CERTIFIED DOCUMENT.



# Innovation Center Park

PREPARED FOR  
University of South Carolina

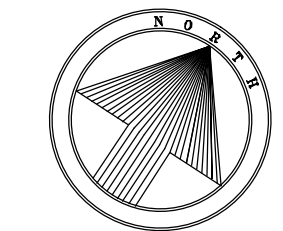
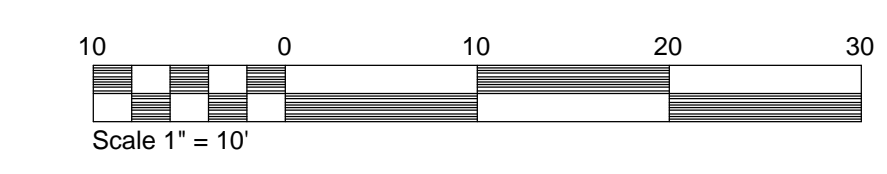
SHEET STATUS			
MARK	DATE	BY	RELEASE
A	08/03/2016	MDS	BID DOCUMENTS
B	04/22/2016	MDS	ADDENDUM 1

SHEET TITLE:  
**HARDSCAPE PLAN**

PROJECT NUMBER:  
 14017

**H1.01**

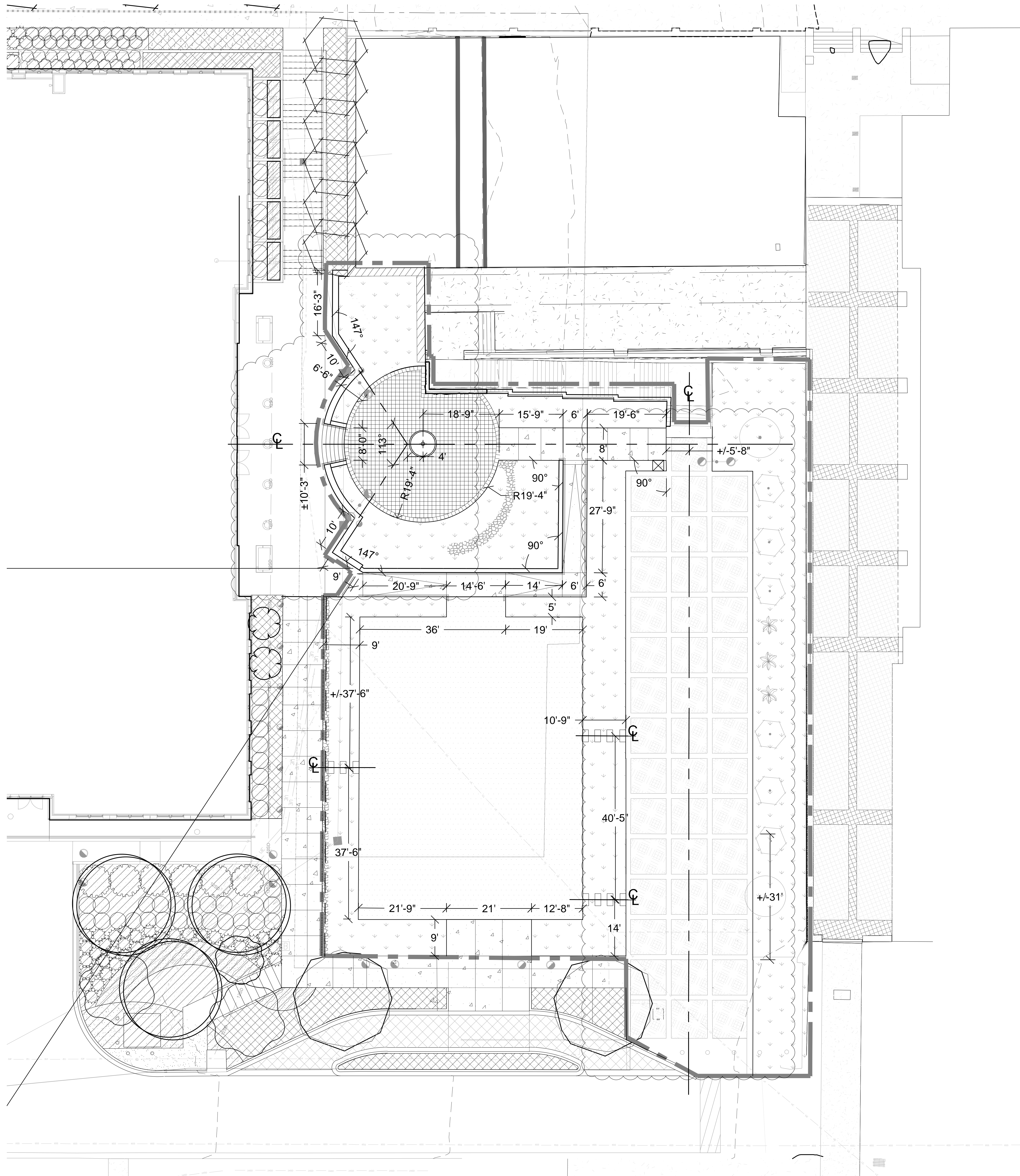
DATE: 02.02.2016  
 NOT ISSUED FOR CONSTRUCTION.











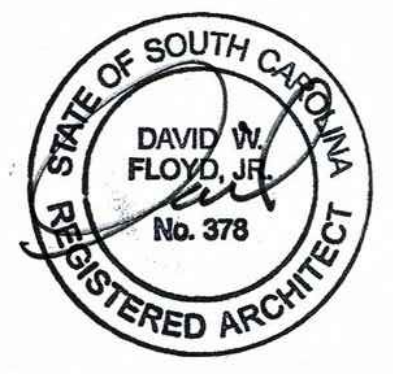
**LAYOUT NOTES:**

1. THE CONTRACTOR SHALL BE RESPONSIBLE FOR OBTAINING NECESSARY PERMITS, GIVING NOTICES, AND PAYING FEES. THE CONTRACTOR SHALL COMPLY WITH ALL CITY, COUNTY AND STATE BUILDING CODES AND ORDINANCES RELATING TO THIS CONSTRUCTION PROJECT.
2. IN EVENT OF ANY DISCREPANCIES FOUND IN THE DRAWINGS, OR IF PROBLEMS ARE ENCOUNTERED DURING CONSTRUCTION, THE CONTRACTOR SHALL BE REQUIRED TO NOTIFY THE LANDSCAPE ARCHITECT BEFORE PROCEEDING WITH THE WORK.
3. WHERE PLAN DETAILS DIFFER FROM CITY STANDARDS, THE LATTER SHALL BE SUBSTITUTED IN APPROVED IN WRITING BY LANDSCAPE ARCHITECT.
4. DO NOT SCALE DRAWINGS. IF DIMENSIONS ARE IN QUESTION, THE CONTRACTOR SHALL BE RESPONSIBLE FOR OBTAINING CLARIFICATION FROM THE ARCHITECT BEFORE PROCEEDING WITH THE WORK.
5. NO SUBSTITUTIONS OF ANY MATERIALS OR PRODUCTS SHALL BE ALLOWED WITHOUT THE WRITTEN CONSENT OF THE LANDSCAPE ARCHITECT.
6. CONTRACTOR TO LAY OUT ALL PROPOSED WALK, WALLS, FENCING, RAILING, HANDRAILS, LIGHTING, SITE FURNISHINGS, PAVERS, STEPS, LANDSCAPE, TRELLIS, AND IRRIGATION AND RECEIVE OWNER AND LANDSCAPE ARCHITECTS APPROVAL PRIOR TO CONSTRUCTION.
7. ALL SURFACES TO BE POWER-WASH CLEANED AT SUBSTANTIAL AND FINAL COMPLETION

**DAVID W. FLOYD**  
 LANDSCAPE ARCHITECTURE - LAND PLANNING  
 3715 Northlake Parkway T: 404-705-9411  
 330 Northlake Blvd, 302 F: 404-705-9491  
 Atlanta, Georgia 30327

COPYRIGHT © 2006 BY DAVID W. FLOYD, LANDSCAPE ARCHITECTURE. ALL RIGHTS RESERVED. THIS DOCUMENT (INCLUDING ELECTRONIC AND REPRODUCTIONS) IS THE PROPERTY OF DAVID W. FLOYD, AND ONLY FOR USE ON THE PROJECT SPECIFIED HEREIN. IT IS NOT TO BE USED ON OTHER PROJECTS OR EXTENSIONS TO THIS PROJECT IN WHOLE OR IN PART, EXCEPT BY THE EXPRESSED WRITTEN AGREEMENT WITH DAVID W. FLOYD. THIS DOCUMENT AND REPRODUCTIONS SHALL NOT BE CONSIDERED A CERTIFIED DOCUMENT.

PROFESSIONAL STAMP:



**Innovation Center Park**  
 PREPARED FOR  
 University of South Carolina

SHEET STATUS

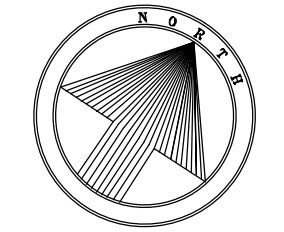
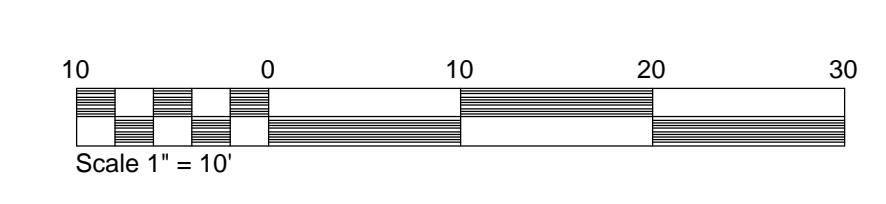
MARK	DATE	BY	RELEASE
A	03/03/2016	MDS	BID DOCUMENTS
B	04/20/2016	MDS	ADDENDUM 1

SHEET TITLE:  
**LAYOUT PLAN**

PROJECT NUMBER:  
 14017

**H3.01**

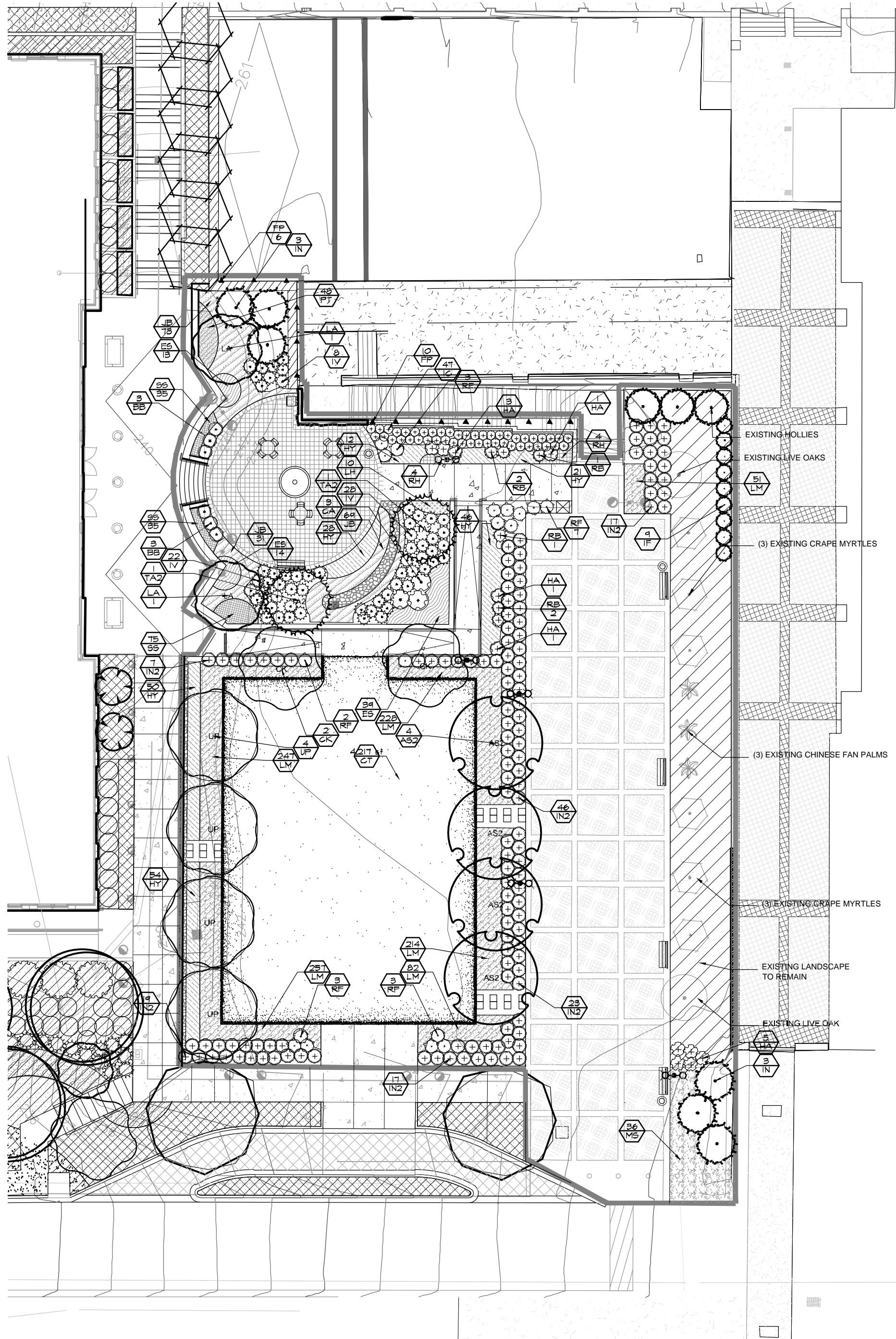
DATE: 02.02.2016  
 NOT ISSUED FOR CONSTRUCTION.











**PLANT SCHEDULE OVERALL**

TREES	QTY	BOTANICAL NAME / COMMON NAME	MIN. SIZE	ROOT	MIN. HGT.	SPACING	NATIVE	REMARKS
AS2	4	Acer barbatum / Southern Sugar Maple	6" cal.	B & B	16' hgt.	as shown	Yes	Full Canopy, Standard
CK	2	Cladrastis kentuckea / American Yellowwood	3" cal.	B & B	14' hgt.	as shown	Yes	Full Canopy, Standard
IF	9	Ilex x attenuata 'Fosteri' / Foster's Holly	-	B & B	8' hgt.	as shown		Full to Base
IN	6	Ilex x 'Nellie R Stevens' / Nellie Stevens Holly	-	B & B	14' hgt.	as shown		Full to Base
LA	2	Liriodendron tulipifera 'Arnold' / Arnold Tulip Poplar	3" cal.	B & B	15' hgt.	as shown		
TA2	2	Taxodium ascendens / Pond Cypress	4" cal.	B & B	14' hgt.	as shown	Yes	Full Canopy, Standard
UP	4	Ulmus americana 'Princeton' / American Elm	6" cal.	B & B	18' hgt.	as shown		Full Canopy, Standard

SHRUBS	QTY	BOTANICAL NAME / COMMON NAME	MIN. SIZE	SPACING	MIN. HGT.	MIN. SP.	ROOT	REMARKS
BB	6	Buxus microphylla / Littleleaf Boxwood	3 gal	2' o.c.	3' hgt.			Full to base, Formal Hedge
CA	3	Callicarpa americana / American Beautyberry	3 gal	4' o.c.	3' ht.	4' sp.		Full to Base
HA	11	Hydrangea arborescens 'Annabelle' / Annabelle Smooth Hydrangea	3 gal	3' o.c.	2' hgt.			
IC	47	Ilex cornuta 'Carissa' / Carissa Holly	3 gal	3' o.c.	2' hgt.			
IN2	129	Ilex vomitoria 'Nana' / Dwarf Yaupon	3 gal	3' o.c.	3' ht.	3' sp.		Full to Base
IV	58	Itea virginica 'Little Henry' / Little Henry Sweetspire	3 gal	3' o.c.	2' hgt.			Full to Base
RB	6	Rosmarinus officinalis 'Blue Spires' / Rosemary	3 gal	2' o.c.	2' hgt.	3' sp.		
RF	18	Rhododendron flammeum / Occonee Azalea	3 gal	3' o.c.	3' ht.	3' sp.		Full, Coral Red blooms

VINE/ESPALIER	QTY	BOTANICAL NAME / COMMON NAME	MIN. SIZE	SPACING	MIN. HGT.	MIN. SP.	ROOT	REMARKS
FP	16	Ficus pumila / Creeping Fig	1 gal					3 Runners 18" each

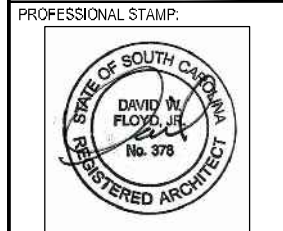
GROUND COVERS	QTY	BOTANICAL NAME / COMMON NAME	UNIT	MIN. SIZE	SPACING	REMARKS
CT	4,217 sf	Zoysia japonica / Zoysia	SF			Medium Texture
ES	66	Echinacea x 'Sunrise' / Sunrise Coneflower	1 gal.	18" o.c.		Full Coverage, Disease Free
HY	211	Hemerocallis x 'Yellow' / Daylily	1 gal	1'	18" o.c.	Full Coverage, Disease Free
LH	10	Lavandula heterophylla / Lavender	1 gal.	18" o.c.		Full Coverage, Disease Free
PT	48	Pachysandra terminalis / Japanese Spurge	4"pot	12" O.C.		Full Coverage, Disease Free
RH	8	Rosmarinus officinalis 'Huntington Carpet' / Huntington Carpet Rosemary	1 gal	1 gal.	24" o.c.	
SS	145	Seasonal Color Seasonal Color / Seasonal Color	4"pot			Full Coverage, Disease Free

GRASSES	QTY	BOTANICAL NAME / COMMON NAME	UNIT	MIN. SIZE	SPACING	REMARKS
JB	173	Juncus effusus 'Blue Arrows' / Juncus	1 gal.			Full Coverage, Disease Free
LM	1,079	Liriope muscari 'Big Blue' / Big Blue Lily Turf	1 gal	6" min.	12" o.c.	Full Coverage, Disease Free
MS	36	Miscanthus sinensis 'Adagio' / Adagio Eulalia Grass	1 gal.	18" min.		Full Coverage, Disease Free

DAVID W. FLOYD  
 LANDSCAPE ARCHITECTURE - LAND PLANNING  
 375 Northcoast Parkway T 404.703.5411  
 300 Northcreek Blvd, 300 F 404.703.9451  
 Atlanta, Georgia 30327

COPYRIGHT © 2016 BY DAVID W. FLOYD, LANDSCAPE ARCHITECTURE. ALL RIGHTS RESERVED. THIS DOCUMENT, INCLUDING ELECTRONIC AND HARD-COPY FORMS, IS THE PROPERTY OF DAVID W. FLOYD, AND ONLY FOR USE ON THE PROJECT SPECIFIED HEREIN. IT IS NOT TO BE USED ON OTHER PROJECTS OR EXTENDED TO THIS PROJECT, IN WHOLE OR IN PART, EXCEPT BY THE EXPRESSED WRITTEN AGREEMENT WITH DAVID W. FLOYD. THIS DOCUMENT AND REPRODUCTIONS SHALL INCLUDE CONSULTING ARCHITECT'S JOURNALMENT.



**Innovation Center Park**  
 PREPARED FOR  
 University of South Carolina

SHEET STATUS

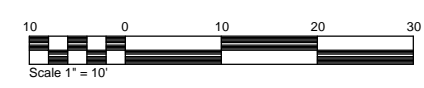
MARK	DATE	BY	RELEASE
A	06/03/2016	WDS	BD DOCUMENT'S
D	04/23/2016	WDS	ADDendum 1

SHEET TITLE:  
**LANDSCAPE PLAN**

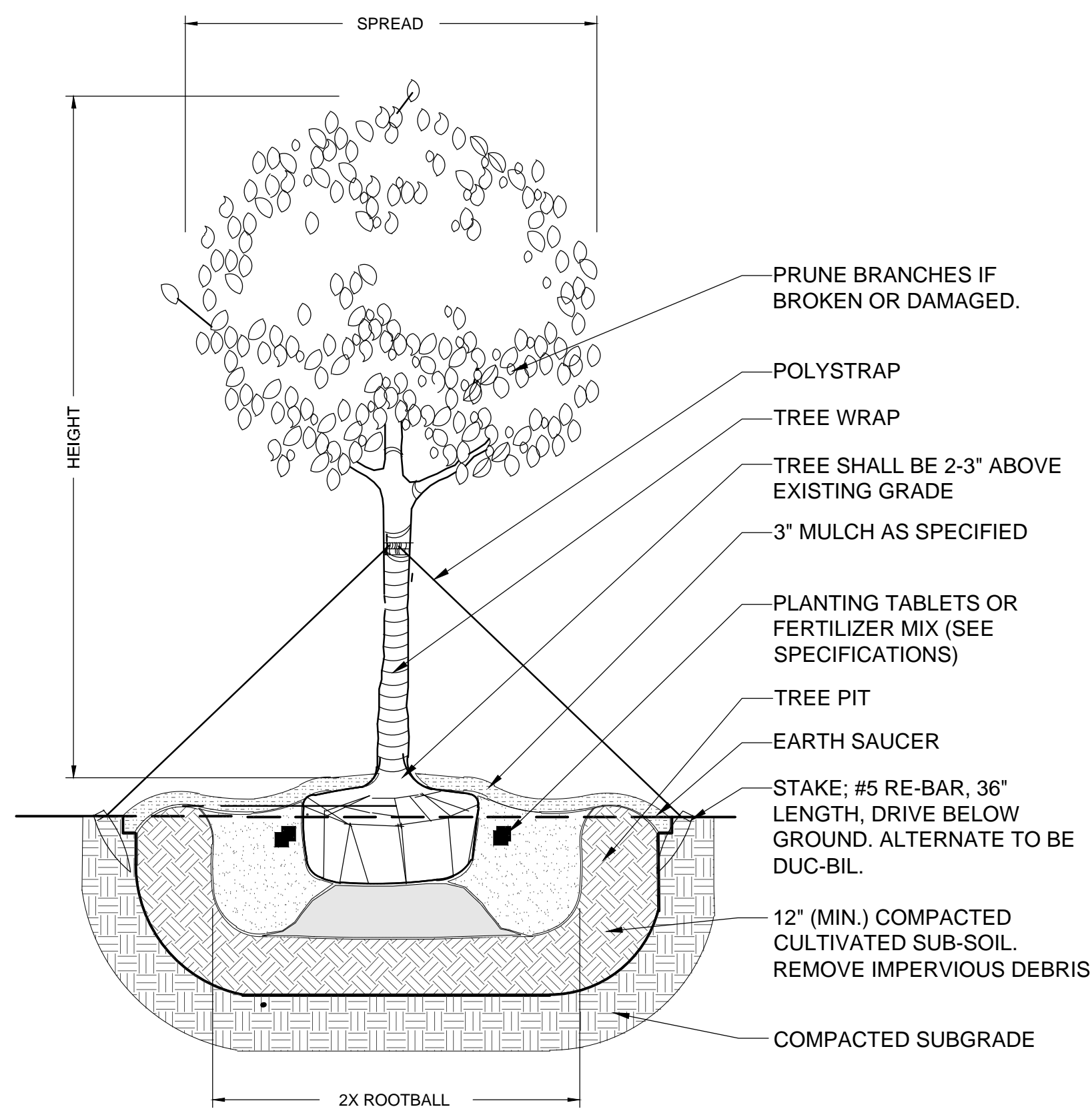
PROJECT NUMBER:  
 14017

**L1.01**

DATE: 02.02.2016  
 NOT ISSUED FOR CONSTRUCTION.





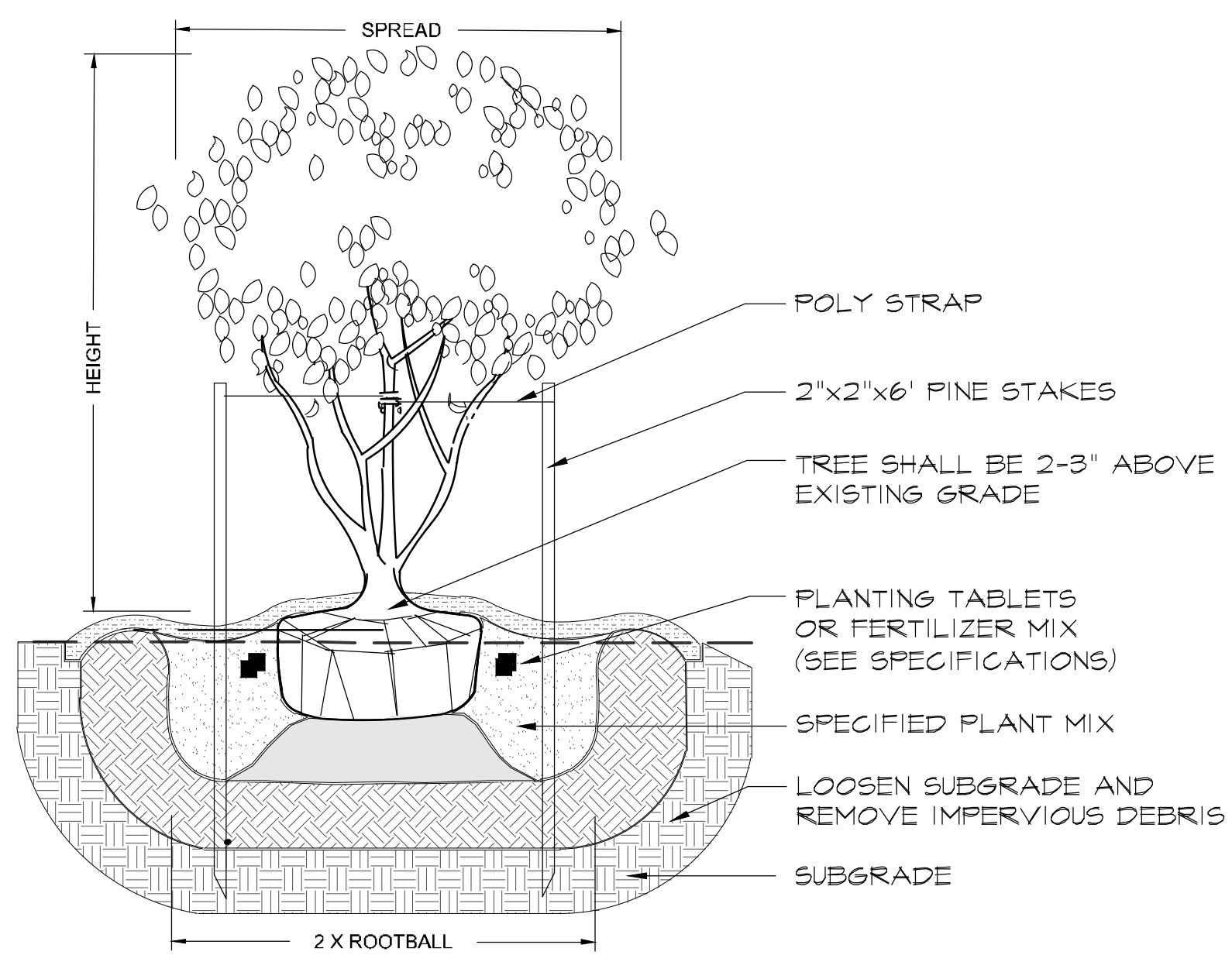


**TREE PLANTING NOTES & PROCEDURES**

- EXCAVATE TREE PIT TO A DEPTH EQUAL TO DEPTH OF ROOTBALL PLUS 24", AND A WIDTH EQUAL TO TWO (2) TIMES THE DIAMETER OF THE ROOTBALL.
- FILL TREE PIT WITH WATER AND CONFIRM PERCOLATION RATE. (NOTIFY LANDSCAPE ARCHITECT IF POOR DRAINAGE CONDITIONS EXIST.)
- INSTALL TREE PER DETAIL AVOIDING DAMAGE TO ROOTBALL OR TREE TRUNK.
- ADD SPECIFIED FERTILIZER TABLETS & MYCORRHIZAL TRANSPLANT INOCULANT.
- REMOVE BURLAP ON TOP 1/3 OF TREE ROOTBALL. REMOVE BURLAP ON TOP 1/3 OF TREE ROOTBALL.
- IMMEDIATELY SOAK TREE PIT WITH WATER AND REMOVE ANY AIR POCKETS THAT MAY HAVE OCCURRED DURING BACKFILLING.

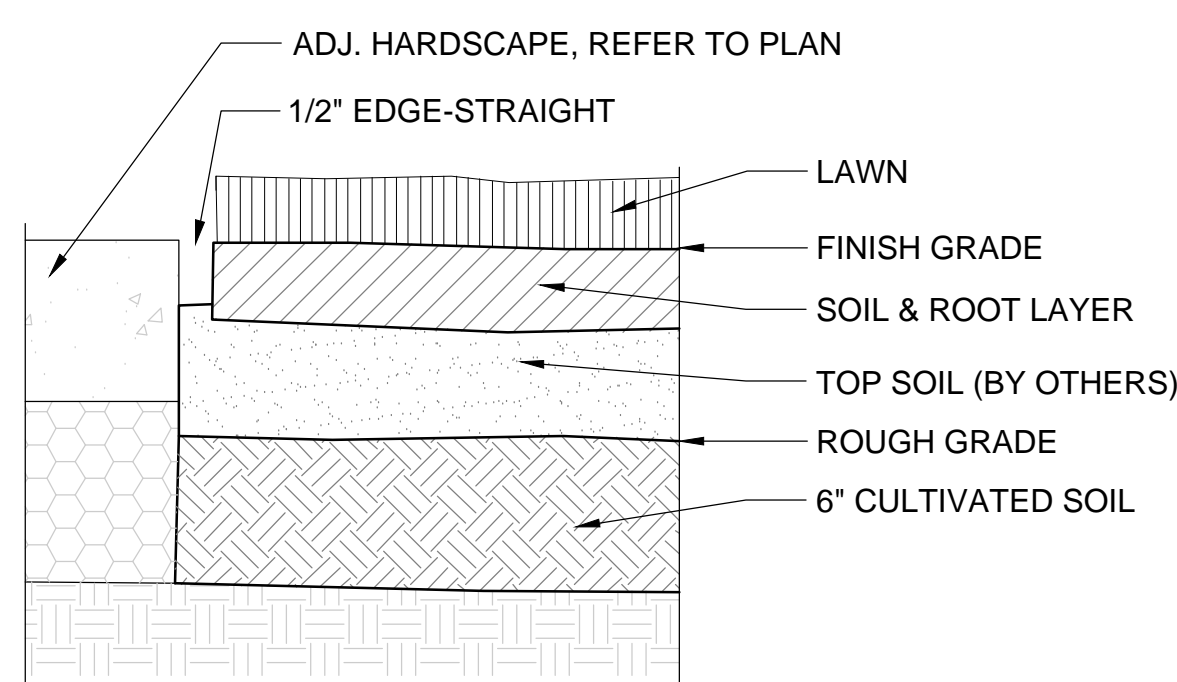
**1 DETAIL: TYPICAL TREE PLANTING**

SCALE: NTS



**2 DETAIL: TYP. MULTI TRUNK TREE PLANTING UNDER 6"**

SCALE: NTS

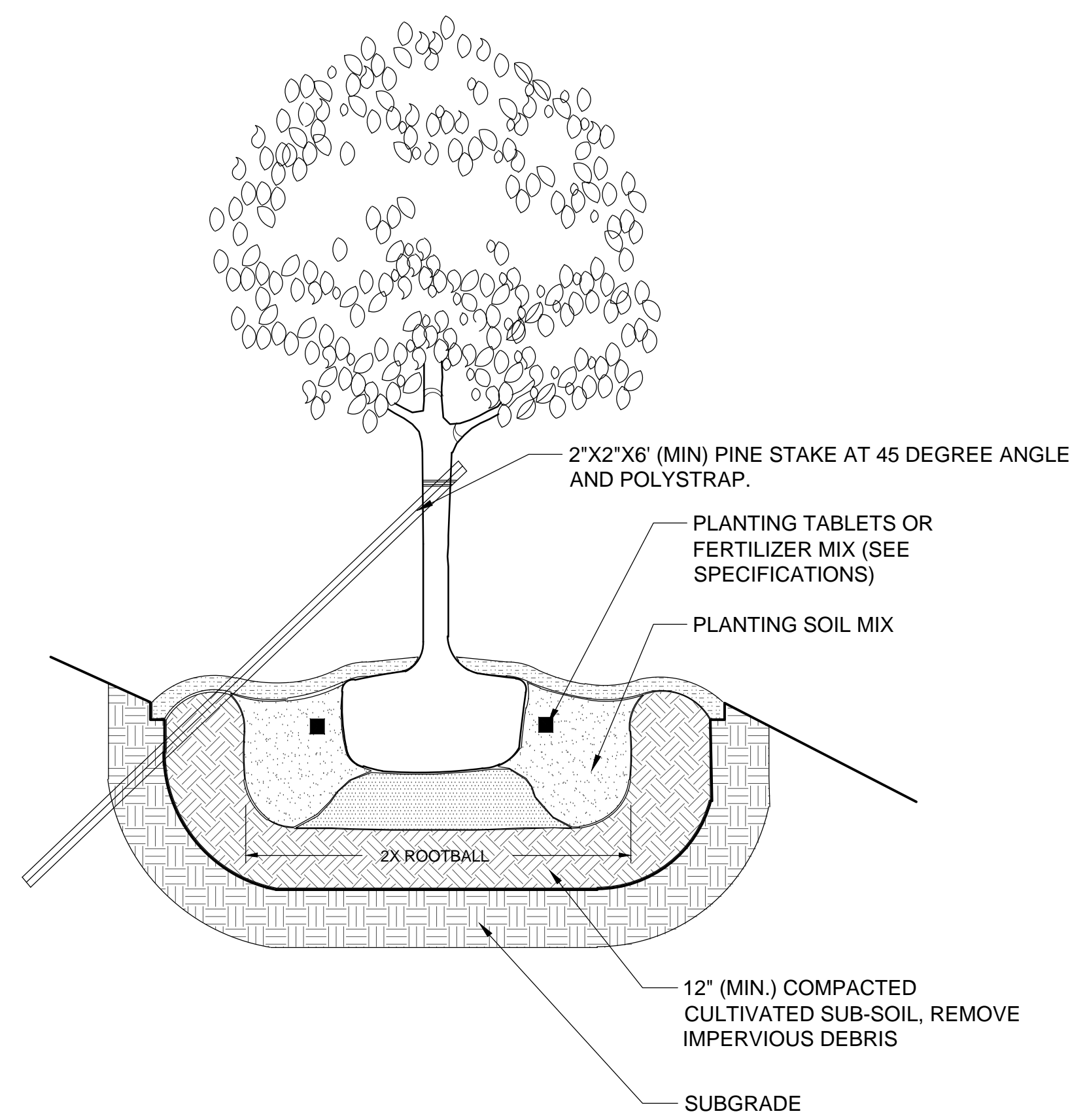


**INSTALLATION NOTES:**

- GENERAL CONTRACTOR TO PROVIDE GRADES TO WITHIN TWO TENTH OF A FOOT FOR PROPOSED GRADES.
- CULTIVATE TO A DEPTH OF 6".
- FINE GRADE AS REQUIRED TO REACH FINISH GRADE PER CIVIL DRAWINGS.
- APPLY LIME AND FERTILIZER, REFER TO SPECIFICATIONS.
- APPLY PRE-EMERGENT HERBICIDE PER MANUFACTURE'S RECOMMENDATION.
- LAY SOD & ROLL LEVEL.
- WATER ENTIRE AREA THOROUGHLY.
- INSTALL SOD SO THAT THE TOP OF SOIL & ROOT LAYER IS LEVEL WITH TOP OF PAVEMENT.

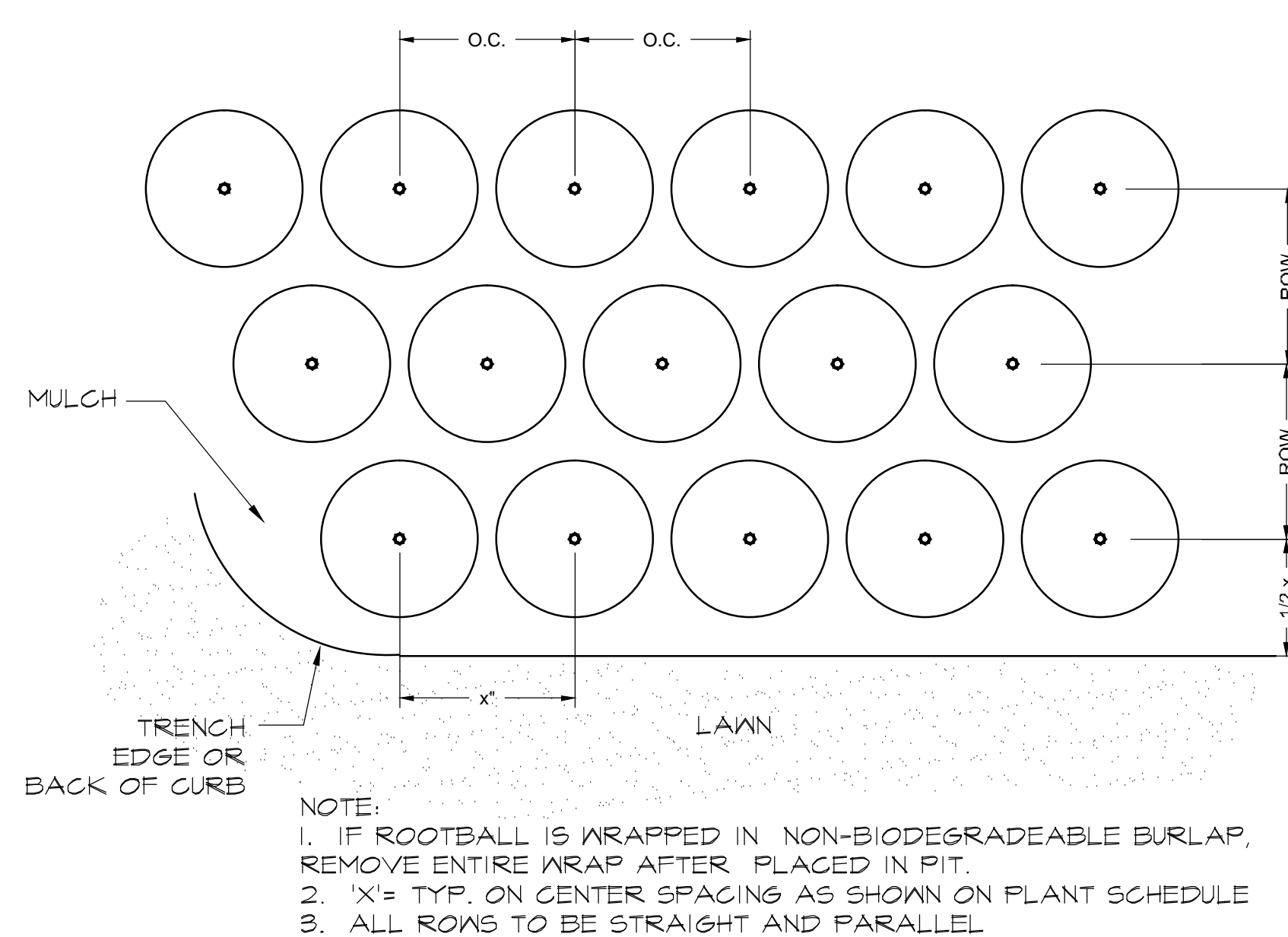
**3 DETAIL: TYP. SOD INSTALLATION**

SCALE: NTS



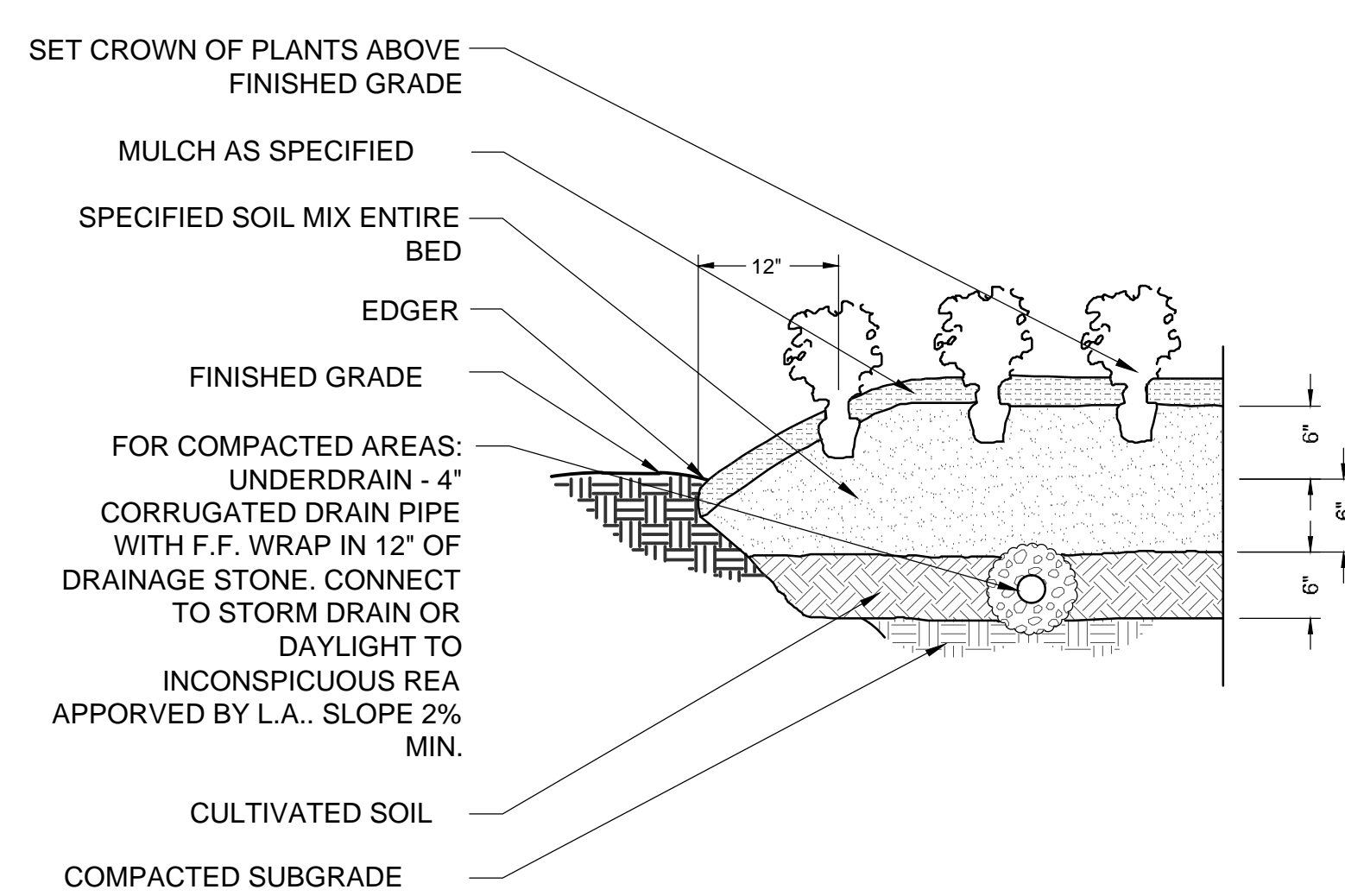
**4 DETAIL: TYP. TREE PLANTING ON SLOPE**

SCALE: NTS



**5 DETAIL: TYP. PLAN MASS SPACING**

SCALE: NTS



**NOTES:**

- REFER TO SPECIFICATIONS FOR FERTILIZATION REQUIREMENTS.

**6 DETAIL: SEASONAL COLOR & PERENNIAL BED PREPARATION**

SCALE: NTS

- Contractor to carefully examine the contract documents and existing conditions before submitting bid proposal or commencing work.
- Damage to existing utilities or site improvements caused by the contractor are the full responsibility of contractor.
- Contractor's base bid to include all materials, labor, permits, equipment, tools, insurance, ETC. to perform the work as described in the contract documents.
- Contractor to complete work within schedule established by owner.
- Contractor to provide one year warranty for all material from date of substantial completion.
- Provide unit price for all materials (installed cost) listed on the plant schedule.
- Contractor to provide interim maintenance (watering, pruning, fertilizing, guying, mowing, trimming, adequate drainage of ponding areas, edging, weeding, mulching, application of insecticides/herbicides, and general landscape clean-up) until substantial completion notice is provided by the owner or landscape architect.
- Perform work in compliance with all applicable laws, codes, and regulations required by authorities having jurisdiction over such work and provide for permits required by local authorities.
- Topsoil shall be natural, fertile, friable, sandy clay loam capable of sustaining plant growth, free of stones, stumps, ETC.
- (REMOVED FROM NOTES. REFER TO NOTE #17 BELOW )
- All planted material shall be equivalent in quality to specimen grade or better, as noted by the American Association of Nurserymen, latest edition. All trees of lesser quality shall be rejected by the city arborist.
- Plant material to be free of disease, insect pests, eggs, or larvae. Damaged plant material shall be rejected.
- Mulch to be clean, fresh, new, red, long-needle pine straw, 3 inches deep.
- Test plant beds and plant pits for adequate drainage. Work shall be made by the contractor at no additional cost to owner. Hardpan or moisture barriers shall be broken, or drain pipes to be installed to provide proper drainage of plant areas. Plant pits shall be excavated to the bottom of the pit. Fill each plant pit with water and observe the pit for 2 hours. If the water has not dissipated by 50% within 2 hours, notify the landscape architect of such in writing before installing plants in the questionable area(s), otherwise contractor shall be held liable for the livability of the plant. In hardpan conditions where water does not drain within 2 hours, install drain pipes as per tree planting in compacted soil area detail.
- Trees shall be installed 2-3' above finish grade in hardpan areas unless otherwise directed to provide drainage.
- Plant beds shall be neatly edged using a 3" wide by 6" wide deep trench. Provide 2/1 side slope behind trench edge.
- All landscape beds, including turf, shall be cultivated to a depth of 18 inches below grade to break through compacted or hardpan soil. Remove all stones, roots, and inferior material. Add specified soil amendments and fertilizer. Elevate entire bed 6 inches above original grade. Rake to a consistent smooth surface. Install plants, edge bed area, mulch and water thoroughly.
- Set all plants plumb and turned so that the most attractive side is viewed.
- Plants shall be measured to their main structure, not tip to tip of branches.
- Remove top one-third burlap of B & B wrapping. Remove all binding. If rootball is wrapped in non-biodegradable burlap, remove entire wrap after placed in pit.
- Tree pit and shrub pit to be twice the size of the root mass. Fill with plant mix. See details.
- Broken root balls for trees shall be rejected.
- Any plant materials shipped to site in uncovered vehicles/ trailer shall be rejected regardless of season.
- Space shrubs, ground cover, and seasonal color evenly and in straight rows.
- All tree scores over 1-1/2" shall be rejected and tree to be replaced.
- All shrubs to be dense and full. All trees to have a symmetrical growth habit (360 degrees) unless uncharacteristic to plant type.
- Scarify root mass of shrubs and ground cover before installing.
- Remove all excess growth of trees and shrubs as directed by landscape architect. Do not cut central leader.
- Layout all plant material according to landscape drawings. Receive approval of all layouts before installation. Adjustments to the layout shall be made by the landscape architect. Landscape contractor to make adjustments to layout at no additional cost to the owner. Landscape contractor responsible for adjustment of layout in order to avoid utilities. Notify landscape architect of contemplated adjustments to the layout and receive approval before commencing.
- General contractor to provide grades to two-tenths (.20+) of a foot of proposed finish grades.
- All shrubs shall be dense and well-branched from bottom to top and all sides. "Leggy" shrubs will be rejected by L.A.
- Owner or landscape architecture shall review project at completion of installation for substantial completion. Final completion shall be given at the end of the warranty period if all items are completed to the owner's satisfaction. Contractor shall be notified in writing of substantial and final completion dates.
- See civil drawings for further information regarding: erosion sediment control information, locations of existing and proposed structures, paving, driveways, cut and fill areas, and retention areas, limits of construction, locations of existing and proposed utilities or easements.
- Contractor shall collect three (3) soil samples of existing soil from areas on site to receive planting for testing. Each soil sample shall be approximately 1 kg. (1 gal. zip lock bag) in volume and will receive the following tests by A&L Agricultural Labs:
  - s1-a
  - s3
  - texture analysis
  - infiltration
- Send soil samples to:
  - Mt. Lynn Griffith
  - A&L Southern Agricultural Laboratories
  - 1199 West Newport Center Drive
  - Deerfield Beach, Florida 33442
- \*Send test results to landscape architect.

**7 LANDSCAPE NOTES**

SCALE: NTS

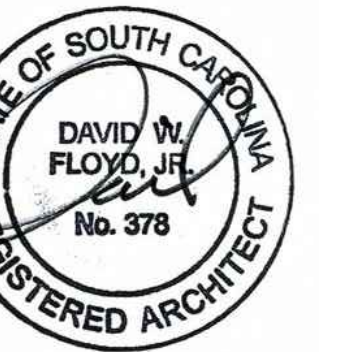
DAVID W. FLOYD

LANDSCAPE ARCHITECTURE LAND PLANNING

3715 Northside Parkway T 404.705.9411  
300 Northcrest, Bldg. 300 F 404.705.9481  
Atlanta, Georgia 30327

COPYRIGHT © 2005 BY DAVID W. FLOYD. LANDSCAPE ARCHITECTURE. ALL RIGHTS RESERVED. THIS DOCUMENT (INCLUDING ELECTRONIC AND REPRODUCTIONS) IS THE PROPERTY OF DAVID W. FLOYD. AND ONLY FOR USE ON THE PROJECT SPECIFIED HEREIN. IT IS NOT TO BE USED ON OTHER PROJECTS OR EXTENSIONS TO THIS PROJECT, IN WHOLE OR IN PART, EXCEPT BY THE EXPRESSED WRITTEN AGREEMENT WITH DAVID W. FLOYD. THIS DOCUMENT AND REPRODUCTIONS SHALL NOT BE CONSIDERED A CERTIFIED DOCUMENT.

PROFESSIONAL STAMP:



**Innovation Center Park**

PREPARED FOR  
University of South Carolina

SHEET STATUS

MARK	DATE	BY	RELEASE
A	09/03/2016	MOS	BID DOCUMENTS
B	04/02/2018	MOS	ADDENDUM 1

SHEET TITLE:

**LANDSCAPE  
DETAILS**

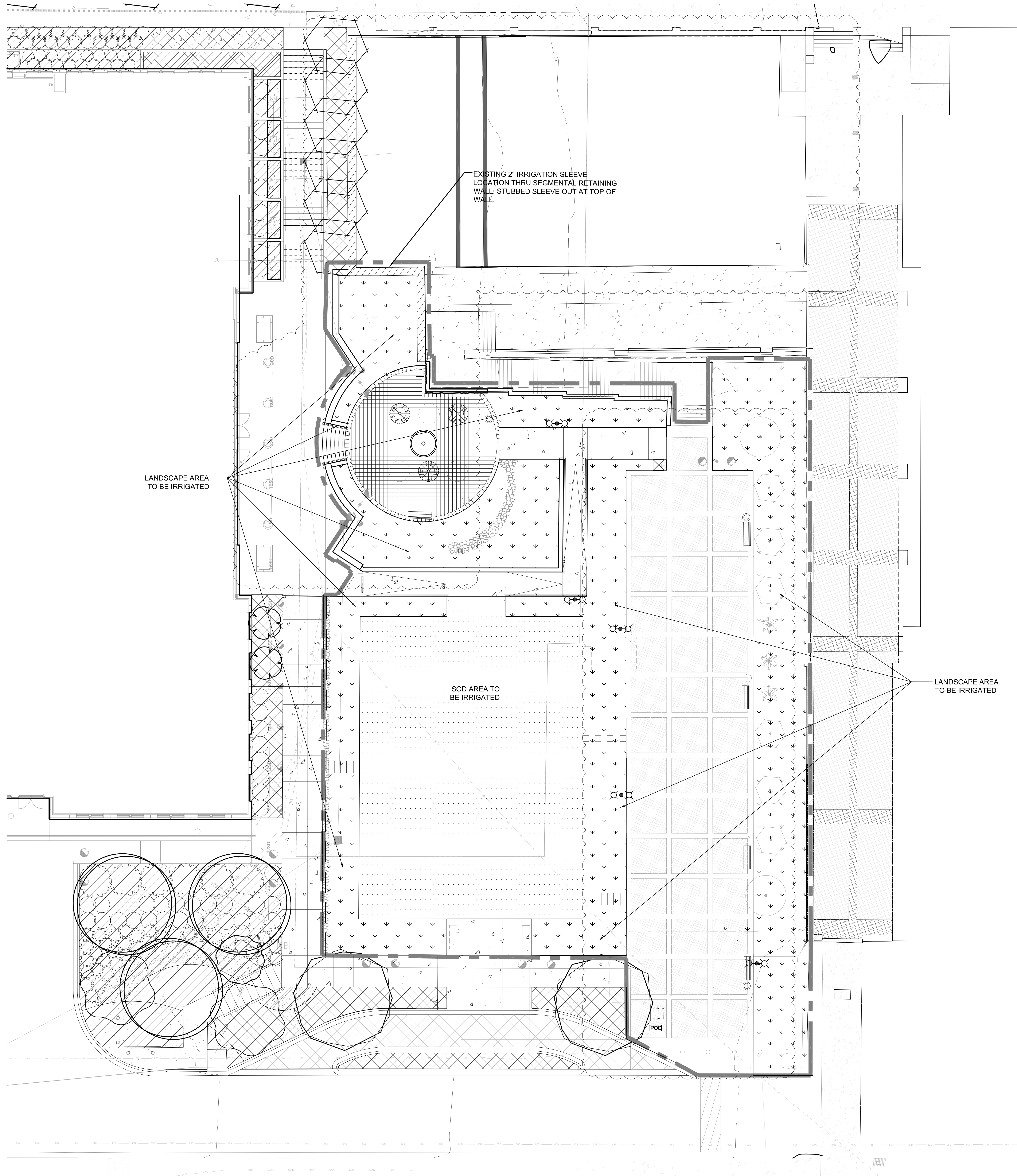
PROJECT NUMBER:  
14017

**L2.01**

DATE: 02.02.2016

NOT ISSUED FOR CONSTRUCTION.





**IRRIGATION LEGEND:**

☐ POINT OF CONNECTION TO THE IRRIGATION SYSTEM WATER SUPPLY PER LOCAL CODES. PROVIDE IRRIGATION WATER METER AND BACKFLOW PREVENTER PER PLANS.

NOTE: CONTRACTOR TO PROVIDE LATERAL LINE SIZING ON SUBMITTALS FOR REVIEW.

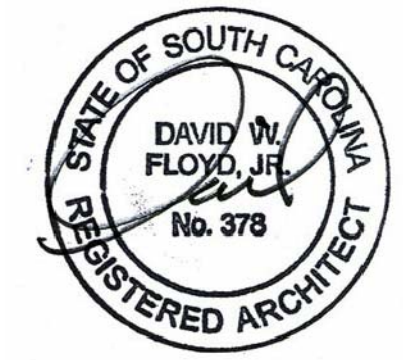
**IRRIGATION NOTES:**

- 1) SITE TO BE IRRIGATED BY AN AUTOMATED IRRIGATION SYSTEM DESIGNED AND INSTALLED BY A LICENSED IRRIGATOR IN ACCORDANCE TO STATE LAW.
- 2) CONTRACTOR SHALL SUPPLY AND INSTALL ALL VALVES, HEADS, PIPE, CONTROLLING WIRING, BACKFLOW PREVENTOR, AND CONTROLLER FOR A TWO WIRE IRRIGATION SYSTEM.
- 3) COORDINATE LOCATION OF POINT CONNECTION ☐, BACKFLOW PREVENTOR AND CONTROLLER ☐ WITH OWNER PRIOR TO INSTALLATION.
- 4) LOCATION OF ALL LINES ARE DIAGRAMMATIC.
- 5) DRIP IRRIGATION TUBING TO BE SECURED TO THE GROUND USING 1/2" STAKES.
- 6) CONTRACTOR TO PROVIDE A POP-UP VISUAL INDICATOR HEAD AT THE END OF EACH DRIP IRRIGATION ZONE.
- 7) ALL IRRIGATION CONNECTIONS INSIDE OF THE BUILDING TO BE DETAILED BY PLUMBING ENGINEER.

**DAVID W. FLOYD**  
 LANDSCAPE ARCHITECTURE+LAND PLANNING  
 3715 Northside Parkway T: 404.705.9411  
 300 Northcreek Bldg. 300 F: 404.705.9491  
 Atlanta, Georgia 30327

COPYRIGHT © 2005 BY DAVID W. FLOYD, LANDSCAPE ARCHITECTURE. ALL RIGHTS RESERVED. THIS DOCUMENT (INCLUDING ELECTRONIC AND REPRODUCTIONS) IS THE PROPERTY OF DAVID W. FLOYD, AND ONLY FOR USE ON THE PROJECT SPECIFIED HEREIN. IT IS NOT TO BE USED ON OTHER PROJECTS OR EXTENSIONS TO THIS PROJECT, IN WHOLE OR IN PART, EXCEPT BY THE EXPRESSED WRITTEN AGREEMENT WITH DAVID W. FLOYD. THIS DOCUMENT AND REPRODUCTIONS SHALL NOT BE CONSIDERED A CERTIFIED DOCUMENT.

PROFESSIONAL STAMP:



# Innovation Center Park

PREPARED FOR  
University of South Carolina

SHEET STATUS

MARK	DATE	BY	RELEASE
A	03/03/2016	MDS	BID DOCUMENTS
B	04/29/2016	MDS	ADDENDUM 1

SHEET TITLE:

## IRRIGATION PLAN

PROJECT NUMBER:  
14017

# IR1.01

DATE: 02.02.2016

NOT ISSUED FOR CONSTRUCTION.

