



UNIVERSITY OF  
**SOUTH CAROLINA**

## AMENDMENT TO SOLICITATION

### **Amendment No. 1**

**DATE:** May 28, 2015

**TO:** ALL VENDORS

**FROM:** Mac Stiles, Procurement Manager

**SOLICITATION NUMBER:** USC-RFQ-2812-MS

**DESCRIPTION:** Provide Office Moving Services for School of Journalism

---

This **Amendment No. 1** modifies the **Request For Quotation** only in the manner and to the extent as stated herein.

### **ITEM ONE – Diagrams of Locations**

---

Bidder shall acknowledge receipt of Amendment No. 1 in the space provided below and return it with their bid response. Failure to do so may subject bid to rejection.

---

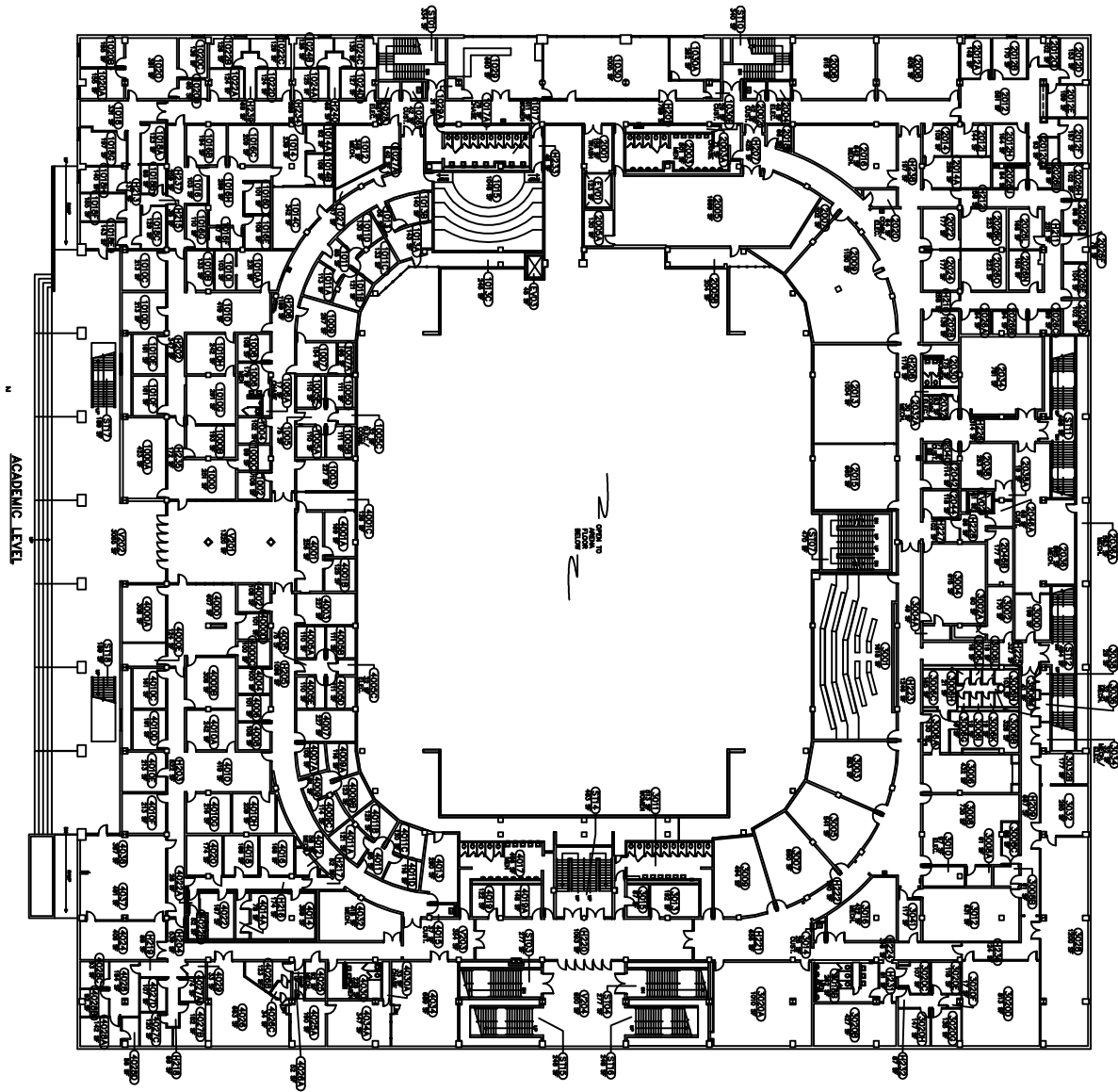
Authorized Signature

---

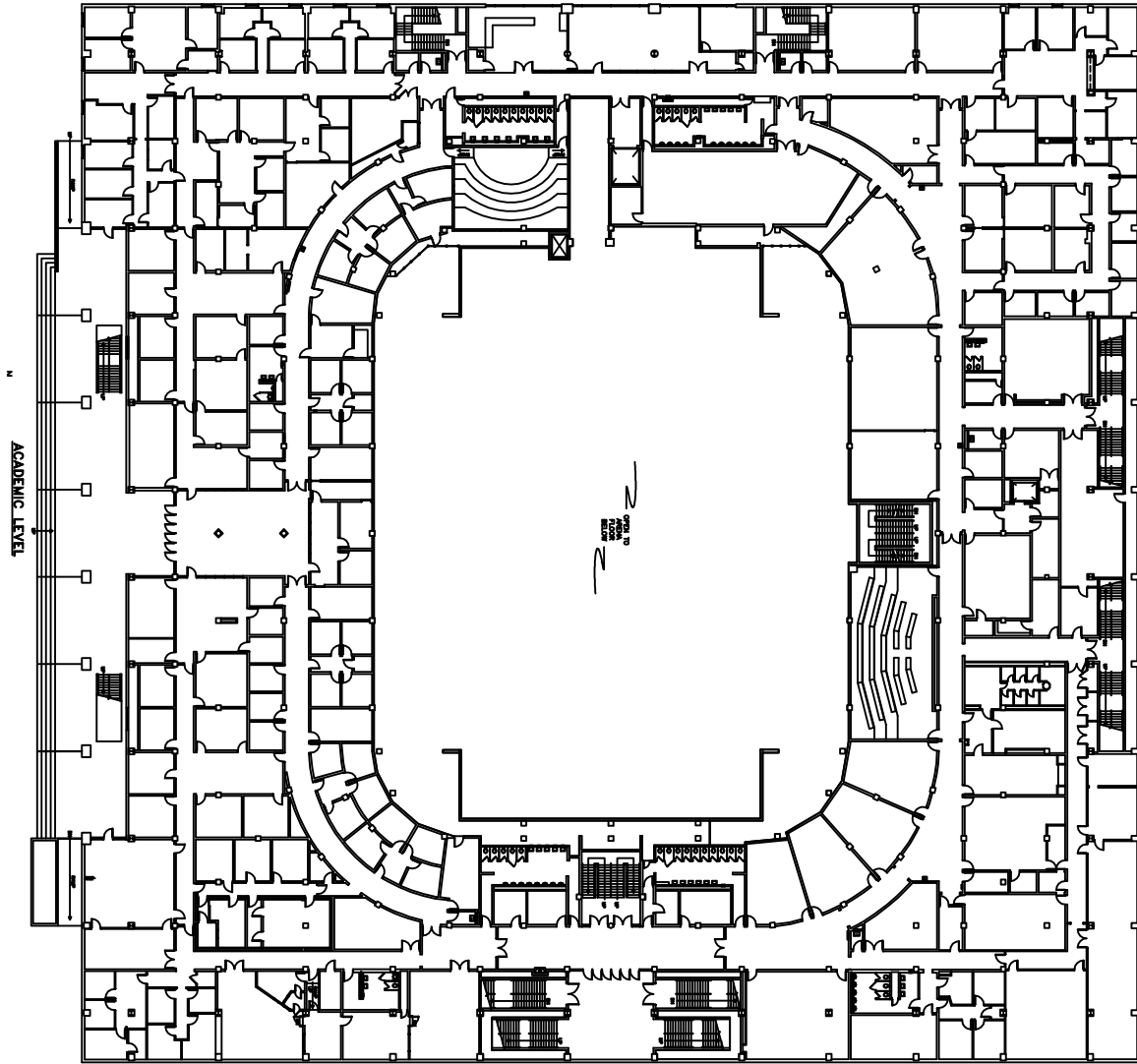
Name of Offeror

---

Date



|   |                                    |                                    |   |                                    |                                    |                          |                    |                                       |
|---|------------------------------------|------------------------------------|---|------------------------------------|------------------------------------|--------------------------|--------------------|---------------------------------------|
| PROJECT TITLE<br><b>SOFT PLAN -- SECOND FLOOR<br/>CAROLINA COLISEUM</b> | SHEET NO.<br><b>004</b>            | SHEET NO.<br><b>004</b>            | DATE<br><b>10 JAN 00</b>                            | CHECKED BY<br><b>---</b>           | DATE<br><b>---</b>                 | CHECKED BY<br><b>---</b> | DATE<br><b>---</b> | CAMPUS PI<br>AND CONST<br>COLUMBIA, S |
| UNIVERSITY OF SOUTH CAROLINA  | 1. UPDATED PER LATEST WALK THROUGH | 2. UPDATED PER LATEST WALK THROUGH | 3. UPDATED PER ADDITIONAL, UNOCCUPIED PER ARCHITECT | 4. UPDATED PER LATEST WALK THROUGH | 5. UPDATED PER LATEST WALK THROUGH | 6.                       | 7.                 |                                       |

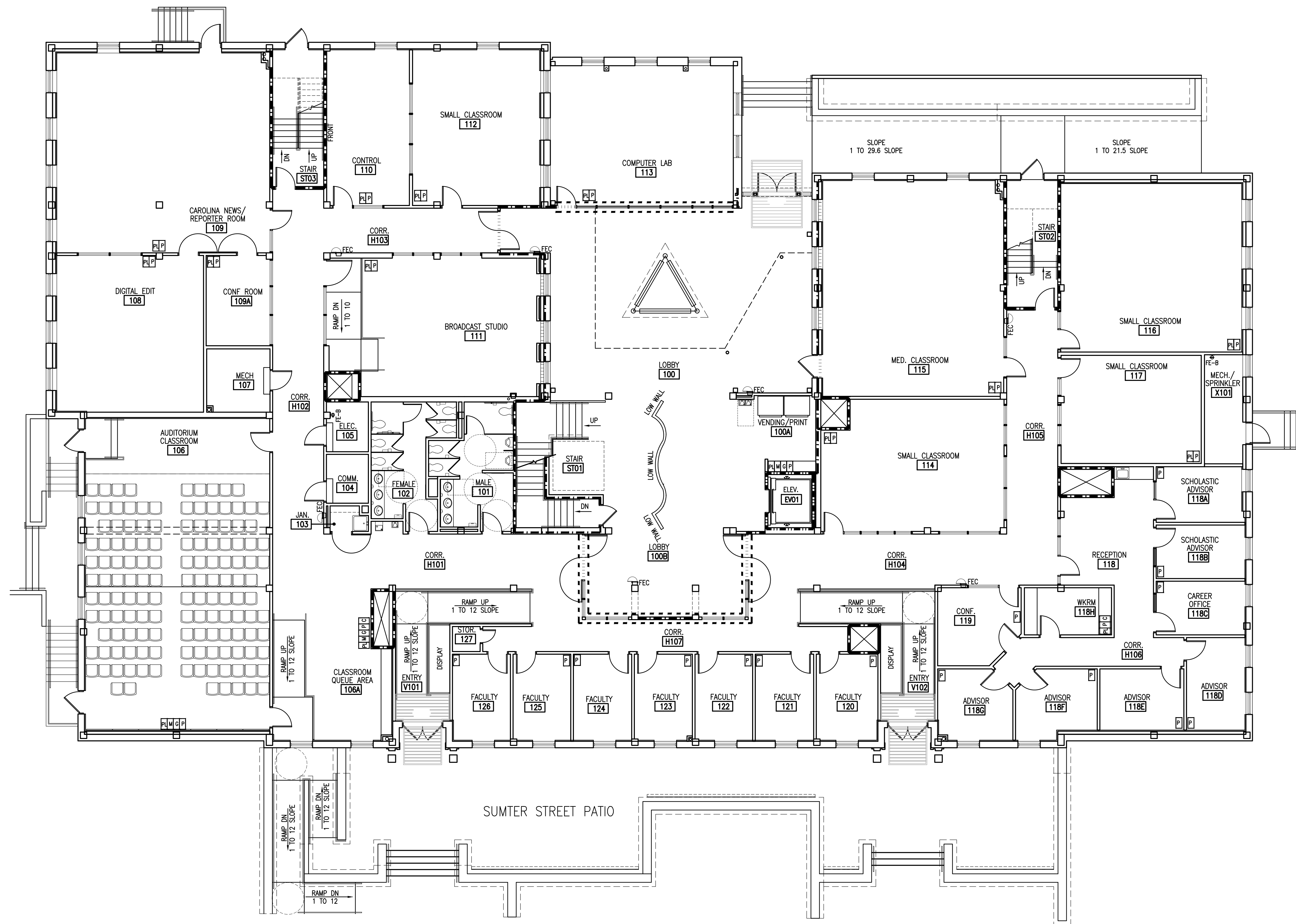








|                              |   |             |  |         |           |          |      |            |      |      |      |
|------------------------------|---|-------------|--|---------|-----------|----------|------|------------|------|------|------|
| PROJECT TITLE                | SOFT PLAN - SECOND FLOOR<br>CAROLINA COLISEUM | REVISIONS   | SF2  | DATE    | 10 JAN 00 | DRAWN BY | ---  | CHECKED BY | ---  | DATE | ---  |
| UNIVERSITY OF SOUTH CAROLINA |   | DESCRIPTION | REVISION                                       | DATE    | DATE      | DATE     | DATE | DATE       | DATE | DATE | DATE |
|                              |   | 1           | UPDATED PER LATEST WALK THROUGH                | 1000011 |           |          |      |            |      |      |      |
|                              |   | 2           | UPDATED PER LATEST WALK THROUGH                | 1700012 |           |          |      |            |      |      |      |
|                              |   | 3           | UPDATED PER ADDITIONAL REVISIONS PER ARCHITECT | 0700013 |           |          |      |            |      |      |      |
|                              |   | 4           | UPDATED PER LATEST WALK THROUGH                | 1800013 |           |          |      |            |      |      |      |
|                              |   | 5           | UPDATED PER LATEST WALK THROUGH                | 0200013 |           |          |      |            |      |      |      |

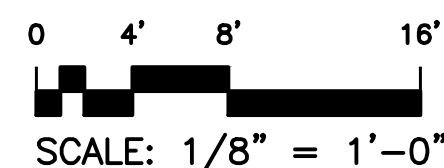
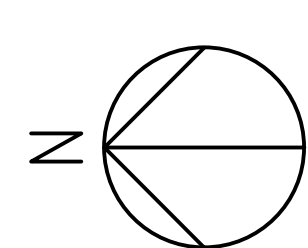


University of South Carolina

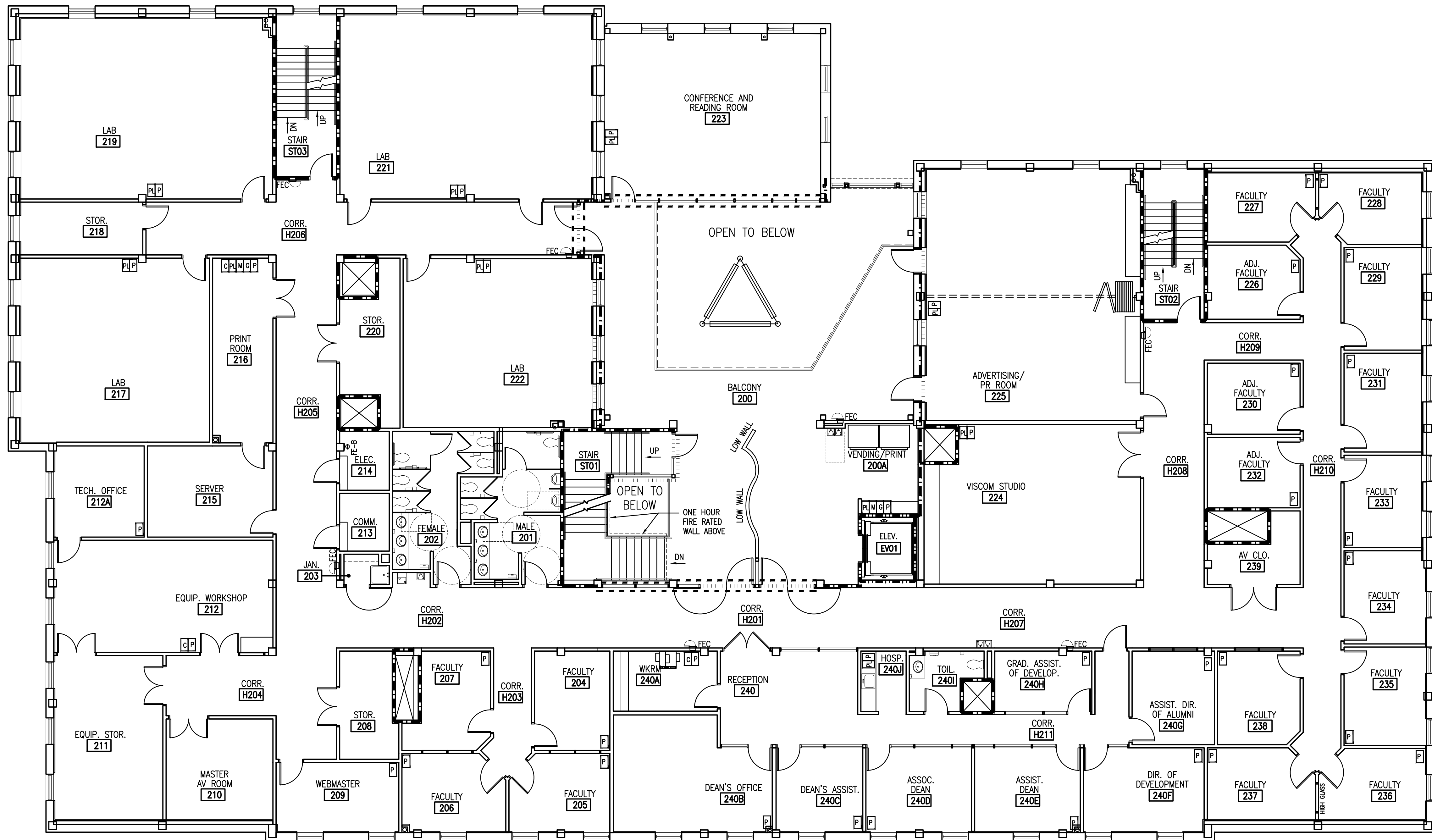
CAMPUS PI  
AND CONST  
COLUMBIA, S



| RECYCLING CONTAINMENT LOCATIONS LEGEND  |   |
|---|---|
| REQUIRED TOTAL FOR BUILDING: 225 SQUARE FEET  |   |
|            | REPRESENTS 1.5 SQUARE FEET  |
|  CARDBOARD |  PLASTIC |
|  PAPER     |  GLASS   |
|  METAL     |   |



18,876 SF  
**1 SECOND FLOOR PLAN**  
A1.2 SCALE: 1/8" = 1'-0"



| RECYCLING CONTAINMENT LOCATIONS LEGEND       |            |
|--|------------|
| REQUIRED TOTAL FOR BUILDING: 225 SQUARE FEET |            |
| □ REPRESENTS 1.5 SQUARE FEET                 |            |
| C CARDBOARD                                  | PL PLASTIC |
| P PAPER                                      | GL GLASS   |
| M METAL                                      |            |

Drawing Title  
**SECOND FLOOR RECYCLING LOCATIONS**

Drawing No.  
**A1.2**

| Revisions | No. | Name | Date |
|-----------|-----|------|------|
|           |     |      |      |
|           |     |      |      |
|           |     |      |      |
|           |     |      |      |

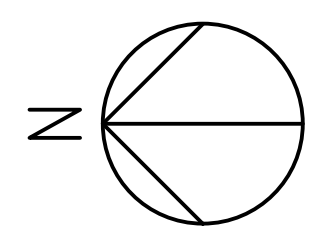
|             |            |
|-------------|------------|
| Project No. | U-676-09   |
| Drawn By    | KGO/MGDELY |
| Checked By  | DRH        |
| Date        | 11.01.12   |

This drawing and the design herein are the property of The Boudreaux Group, Inc. and are not to be reproduced, copied, or used in any manner without the written consent of The Boudreaux Group, Inc. All rights reserved. The Boudreaux Group, Inc. is not responsible for any errors or omissions in this drawing.

Project Title  
**UNIVERSITY OF SOUTH CAROLINA  
HEALTH SCIENCES RENOVATION  
STATE PROJECT NO. H27-6052-AC  
DESIGN DEVELOPMENT  
COLUMBIA, SOUTH CAROLINA**

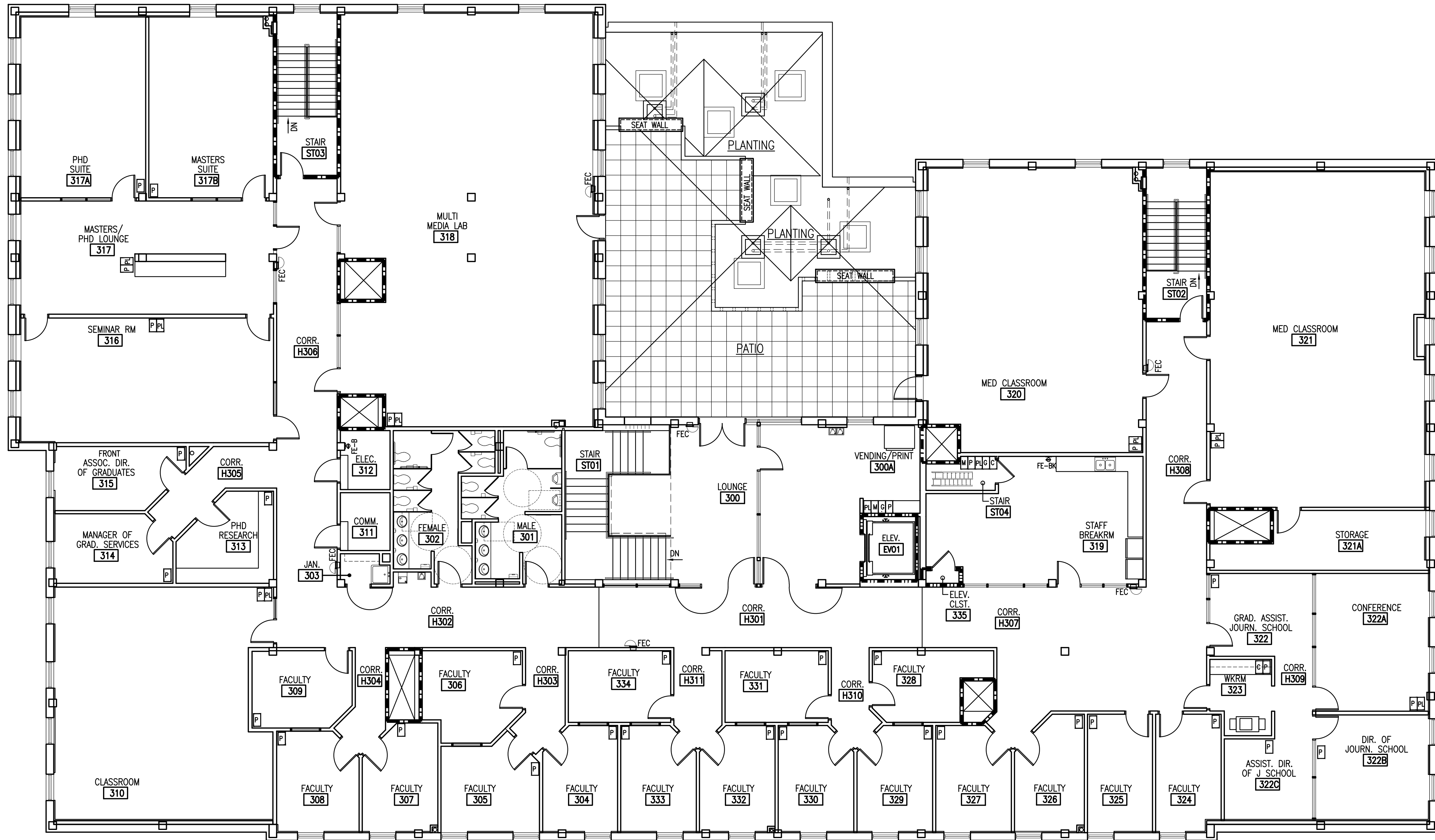
A/E Seal  
**NOT FOR CONSTRUCTION**

The Boudreaux Group  
The Boudreaux Group, Inc.  
1320 Lady St., Suite 200 (3900)  
Columbia, SC 29201  
803.799.0247 F  
803.777.8844 J  
www.boudreauxgroup.com  
Interdisciplinary Design Architecture Interiors Planning



0 4' 8' 16'  
SCALE: 1/8" = 1'-0"

16,926 SF  
1  
A1.3  
THIRD FLOOR PLAN  
SCALE: 1/8" = 1'-0"



| RECYCLING CONTAINMENT LOCATIONS LEGEND       |           |
|--|-----------|
| REQUIRED TOTAL FOR BUILDING: 225 SQUARE FEET |           |
| □ REPRESENTS 1.5 SQUARE FEET                 |           |
| □ CARDBOARD                                  | □ PLASTIC |
| □ PAPER                                      | □ GLASS   |
| □ METAL                                      |           |

Drawing No.

A1.3L

THIRD FLOOR RECYCLING  
LOCATIONS

| Revisions | No. | Name | Date |
|-----------|-----|------|------|
|           |     |      |      |
|           |     |      |      |
|           |     |      |      |
|           |     |      |      |

|             |          |
|-------------|----------|
| Project No. | U-676-09 |
| Drawn By    | KGQ      |
| Checked By  | DRH      |
| Date        | 11.01.12 |

This drawing and the design it represents are the property of The Boudreaux Group, Inc. and are not to be reproduced, stored in a retrieval system, or transmitted in any form or by any means, electronic, mechanical, photocopying, recording, or by any information storage and retrieval system, without the prior written permission of The Boudreaux Group, Inc. All rights reserved.

Project Title  
UNIVERSITY OF SOUTH CAROLINA  
HEALTH SCIENCES RENOVATION  
STATE PROJECT NO. H27-6052-AC  
DESIGN DEVELOPMENT  
COLUMBIA, SOUTH CAROLINA

NOT FOR CONSTRUCTION

A/E Seal

A/E Seal

The Boudreaux Group

The Boudreaux Group, Inc.  
1320 Lady St., Suite 900 (9900)  
Columbia, SC 29201  
803.799.0247 F  
803.777.8844 J  
www.boudreauxgroup.com

Interdisciplinary Design Architecture Interiors Planning