



University of South Carolina
 Purchasing Department
 1600 Hampton Street, 6th floor
 Columbia, SC 29208
 Telephone: (803) 777-4115

Request for Quotation

Page One

THIS IS NOT AN ORDER

Quotation must be received No Later Than:	Send quotation to above address Attention of:	Quotation Number:	Date
---	--	-------------------	------

Print company name and address:

Please quote your lowest delivered price of the items(s) listed below. The Purchasing Department reserves the right to reject any or all quotes and to waive any or all technicalities.

1. If an item cannot be furnished, indicate by **NO QUOTE**.
2. All quotes must be signed by the vendor's representative and terms noted, failure to comply with this instruction may result in disqualification of the quote.
3. **FAXED QUOTES ACCEPTABLE.** FAX # (803) 777-2032

If the product preference is applicable follow these instructions:

Check (X) on the appropriate line: SC End Product _____ US End Product _____ **and** indicate by asterick (*) next to the item number on the bid schedule which preference applies.

NON-RESIDENT VENDORS ONLY: Yes _____ No _____ We have read and applied for (or already have) a non-resident taxpayer affidavit (I-312).

RESIDENT VENDOR PREFERENCE: Yes _____ No _____ SC Resident Vendor Preference as defined in Section 11-35-1524 of the SC Consolidated Procurement Code.

Federal I.D. or Social Security No. _____ SC Minority Certification Number (If Applicable) _____

Submitted By (Print Name) _____ Signature _____ Telephone _____

Item No.	Quantity and Unit	Description of Commodity or Services	Unit Price	Total Price

USC-RFQ-1595-LW

Furnish and Deliver All New Ceiling Material for Williams Brice Stadium

SCOPE

Furnish and deliver all new ceiling material for the Williams Brice Stadium except drywall soffits.

MATERIALS

A. Linear Metal Panels:

1. Manufactured from (0.025) (0.032) inch thick aluminum nominal 4 inches wide by 144 inches long.
 - a. Planar with round edges.

Type **LMC-1** Planar Linear Metal Ceiling Systems **For Interior Installation**, 4" Round Edge Panels, Provide complete with all required accessories and suspension components, **Finish to be Bright Mirror - 58**, as manufactured By Chicago Metallic.

Type **LMC-2** Planar Linear Metal Ceiling Systems **For Exterior Installation**, 4" Round Edge Panels, Provide complete with all required accessories and suspension components, **Finish to be Sterling Metallic - 515**, as manufactured By Chicago Metallic.

3. Unperforated.

B. Accessories

1. Planar Filler Strips Recessed: Manufactured from aluminum 3/4 inch wide by 144 inches long coated to match panel color with linear metal panels.
2. Panel Splices: Manufactured from 0.025 inch thick aluminum 83/4 inches long coated with (black baked-on polyester enamel) (finish identical to linear metal panels), with profile compatible with linear panels.
3. End Plugs: Manufactured from 0.025 inch thick aluminum with round edges. Coated identical to linear metal panels.
4. Perimeter Trim
 - a. Perimeter Caps: Manufactured from 0.025 inch thick aluminum 113/16 inch I.D. by 17/8 inch top flange by 1 inch bottom flange by 120 inches long. Coated identical to linear metal panels.
 - b. Wall Angles: Manufactured from 0.025 inch thick aluminum 15/16 inch wide by 15/16 inch high by 144 inches long with hemmed edges. Coated identical to linear metal panels.

C. Suspension System

1. Symmetrical Carrier:
 - a. Manufactured to an inverted "U" shape from 0.040 inch aluminum 144 inches long. Coated with black polyester enamel.

Note: Double grip carrier required on all exterior applications.

- b. Slotted at appropriate intervals to receive stabilizing components as described below.
 2. Stabilizer Bars: Manufactured from 0.025 inch thick aluminum (4913/16) (3513/16) inch long. Coated with black polyester enamel.
 3. Radius Carrier: Manufactured to an inverted "U" shape from 0.040 inch thick aluminum 120 inches long with integral carrier tabs, painted black.
 4. Expansion Carrier: Manufactured to an inverted "U" shape from 0.040 inch thick aluminum 144 inches long with integral carrier tabs spaced 41/8 inches. Coated with black polyester enamel.
- D. Acoustical Material
1. Blanket type black vinyl faced one side (1)(11/2) inches thick by (1)(11/2) pounds per cubic foot density.
 2. Black matte ductliner 1 inch thick by 11/2 pounds per cubic foot.
- E. Air Diffusion as specified by HVAC.
1. Air Units:
 - a. (2) (4) (6) (8) slot with (8) (10) (12) (14) inches wide (dampered) (undampered) top mounted collars.
 - b. Manufactured from 0.024 inch thick steel with gasketed lower flanges and factory applied acoustical insulation adhered to internal surfaces.
 - c. "L" shaped directional vanes painted black.
 - d. Optional remote control damper assembly with control cable extending through air distribution slot.
- F. Light Fixtures as specified by Electrical/Lighting.
1. Planalite Fluorescent Fixtures:
 - a. Manufactured from phosphatized steel.
 - b. Pre-wired for double lamps 4 inches wide by 50 inches long.
 - c. Energy saving (120) (277) volt ballast U. L. rated, Class P, CBM-ETL certified, sound rated "A", with coil and capacitor protection for interior use.
 - d. 0 degree (120) (277) volt ballast for exterior use.
- G. Light Fixture Lenses: 4 inches by 50 inches long steel louver.

TECHNICAL SPECIFICATIONS

ACOUSTICAL CEILING UNITS & SUSPENSION SYSTEMS

A. Acoustical Ceiling Units, **Panels Type ACT-1:**

- ACT-1** Black 1728 Fine Fissure, Square Edged, 2'x2', Color: Black (used with Black Prelude XL 15/16" Grid) by Armstrong Commercial Ceilings or equal.
1. Surface Texture: Medium
 2. Composition: Mineral Fiber
 3. Color: Tech Black
 4. Size: 24in X 24in X 5/8in
 5. Edge Profile: Square Lay-In for interface with Prelude XL 15/16" Exposed Tee.
 6. Noise Reduction Coefficient (NRC): ASTM C 423; Classified with UL label on product carton, 0.55.
 7. Ceiling Attenuation Class (CAC): ASTM C 1414; Classified with UL label on product carton, 33
 8. Emissions Testing: Section 01350 Protocol, < 13.5 ppb of formaldehyde when used under typical conditions required by ASHRAE Standard 62.1-2004, "Ventilation for Acceptable Indoor Air Quality"
 9. Flame Spread: ASTM E 1264; Class A (UL)
 10. Light Reflectance (LR): ASTM E 1477; White Panel: Light Reflectance: 0.85.
 11. Dimensional Stability: HumiGuard Plus - Temperature is between 32°F (0° C) and 120°F (49° C). It is not necessary for the area to be enclosed or for HVAC systems to be functioning. All wet work (plastering, concrete, etc) must be complete and dry.
 12. Antimicrobial Protection: BioBlock Plus - Resistance against the growth of mold/mildew and gram positive and gram negative odor and stain causing bacteria.
 13. Acceptable Product: Fine Fissured, 1728 as manufactured by Armstrong World Industries.

B. SUSPENSION SYSTEMS (used with ACT-1)

1. Components: All main beams and cross tees shall be commercial quality hot-dipped galvanized (galvanized steel, aluminum, or stainless steel) as per ASTM A 653. Main beams and cross tees are double-web steel construction with type exposed flange design. Exposed surfaces chemically cleansed, capping pre-finished galvanized steel (aluminum or stainless steel) in baked polyester paint. Main beams and cross tees shall have rotary stitching (exception: extruded aluminum or stainless steel).
 - a. Structural Classification: ASTM C 635 Heavy Duty.
 - b. Color: Tech Black and match the actual color of the selected ceiling tile, unless noted otherwise.
 - c. Acceptable Product: Prelude XL 15/16" Exposed Tee as manufactured by Armstrong World Industries, Inc.
2. High Humidity Finish: Comply with ASTM C 635 requirements for Coating Classification for Severe Environment Performance where high humidity finishes are indicated.
 - a. SS Prelude Plus by Armstrong World Industries, Inc. - 100% Type 304 STAINLESS Steel.
 - b. AL Prelude Plus by Armstrong World Industries, Inc. - all ALUMINUM
 - c. Prelude Plus XL Fire Guard by Armstrong World Industries, Inc., G-60 Hot dipped galvanized /aluminum capping
 - d. Structural Classification: ASTM C 635 duty class.
 - e. Color: [Stainless for SS only][White aluminum] [Clear Anodized Aluminum]
3. Attachment Devices: Size for five times design load indicated in ASTM C 635, Table 1, Direct Hung unless otherwise indicated.

4. Wire for Hangers and Ties: ASTM A 641, Class 1 zinc coating, soft temper, pre-stretched, with a yield stress load of at least time three design load, but not less than 12 gauge.
5. Edge Moldings and Trim: Metal or extruded aluminum of types and profiles indicated or, if not indicated, manufacturer's standard moldings for edges and penetrations, including light fixtures, that fit type of edge detail and suspension system indicated. Provide moldings with exposed flange of the same width as exposed runner.
6. Accessories

2.3

ACOUSTICAL CEILING UNITS & SUSPENSION SYSTEMS

A. Acoustical Ceiling Units, **Panels Type ACT-2:**

ACT-2 Georgian 1752, Tegular Edged, 2'x2', Color: White (used with White Prelude XL 15/16" Grid) by Armstrong Commercial Ceilings.

1. Surface Texture: Medium
2. Composition: Mineral Fiber
3. Color: White
4. Size: 24in X 24in X 5/8in
5. Edge Profile: Beveled Tegular for interface with Prelude XL 15/16" Exposed Tee.
6. Noise Reduction Coefficient (NRC): ASTM C 423; Classified with UL label on product carton, 0.55.
7. Ceiling Attenuation Class (CAC): ASTM C 1414; Classified with UL label on product carton, 35
8. Emissions Testing: Section 01350 Protocol, < 13.5 ppb of formaldehyde when used under typical conditions required by ASHRAE Standard 62.1-2004, "Ventilation for Acceptable Indoor Air Quality"
9. Flame Spread: ASTM E 1264; Class A (UL)
10. Light Reflectance (LR): ASTM E 1477; White Panel: Light Reflectance: 0.86.
11. Dimensional Stability: HumiGuard Plus - Temperature is between 32°F (0° C) and 120°F (49° C). It is not necessary for the area to be enclosed or for HVAC systems to be functioning. All wet work (plastering, concrete, etc) must be complete and dry.
12. Antimicrobial Protection: BioBlock Plus - Resistance against the growth of mold/mildew and gram positive and gram negative odor and stain causing bacteria.
13. Acceptable Product: Georgian, 1752 as manufactured by Armstrong World Industries.

B. SUSPENSION SYSTEMS (used with ACT-2)

1. Components: All main beams and cross tees shall be commercial quality hot-dipped galvanized (galvanized steel, aluminum, or stainless steel) as per ASTM A 653. Main beams and cross tees are double-web steel construction with type exposed flange design. Exposed surfaces chemically cleansed, capping pre-finished galvanized steel (aluminum or stainless steel) in baked polyester paint. Main beams and cross tees shall have rotary stitching (exception: extruded aluminum or stainless steel).
 - a. Structural Classification: ASTM C 635 Heavy Duty.
 - b. Color: White and match the actual color of the selected ceiling tile, unless noted otherwise.
 - c. Acceptable Product: Prelude XL 15/16" Exposed Tee as manufactured by Armstrong World Industries, Inc.
2. High Humidity Finish: Comply with ASTM C 635 requirements for Coating Classification for Severe Environment Performance where high humidity finishes are indicated.
 - a. SS Prelude Plus by Armstrong World Industries, Inc. - 100% Type 304 STAINLESS Steel.
 - b. AL Prelude Plus by Armstrong World Industries, Inc. - all ALUMINUM
 - c. Prelude Plus XL Fire Guard by Armstrong World Industries, Inc., G-60 Hot dipped galvanized /aluminum capping

- d. Structural Classification: ASTM C 635 duty class.
- e. Color: [Stainless for SS only][White aluminum] [Clear Anodized Aluminum]
- 3. Attachment Devices: Size for five times design load indicated in ASTM C 635, Table 1, Direct Hung unless otherwise indicated.
- 4. Wire for Hangers and Ties: ASTM A 641, Class 1 zinc coating, soft temper, pre-stretched, with a yield stress load of at least three times design load, but not less than 12 gauge.
- 5. Edge Moldings and Trim: Metal or extruded aluminum of types and profiles indicated or, if not indicated, manufacturer's standard moldings for edges and penetrations, including light fixtures, that fit type of edge detail and suspension system indicated. Provide moldings with exposed flange of the same width as exposed runner.
- 6. Accessories

2.4 ACOUSTICAL CEILING UNITS & SUSPENSION SYSTEMS

A. Acoustical Ceiling Units, **Panels Type ACT-3:**

- ACT-3** Georgian High Washable, Square Edged 2'x2', Color: White (used with White Prelude Plus XL 15/16" Grid) by Armstrong Commercial Ceilings.
- 1. Surface Texture: Medium
 - 2. Composition: Mineral Fiber
 - 3. Color: White
 - 4. Size: 24in X 24in X 5/8in
 - 5. Edge Profile: Square Lay-In for interface with Prelude XL Fire Guard 15/16" Exposed Tee.
 - 6. Noise Reduction Coefficient (NRC): ASTM C 423; Classified with UL label on product carton, N/A.
 - 7. Ceiling Attenuation Class (CAC): ASTM C 1414; Classified with UL label on product carton, 33
 - 8. Emissions Testing: Section 01350 Protocol, < 13.5 ppb of formaldehyde when used under typical conditions required by ASHRAE Standard 62.1-2004, "Ventilation for Acceptable Indoor Air Quality"
 - 9. Flame Spread: ASTM E 1264; Class A (UL)
 - 10. Light Reflectance (LR): ASTM E 1477; White Panel: Light Reflectance: 0.88.
 - 11. Dimensional Stability: HumiGuard Plus - Temperature is between 32°F (0° C) and 120°F (49° C). It is not necessary for the area to be enclosed or for HVAC systems to be functioning. All wet work (plastering, concrete, etc) must be complete and dry.
 - 12. Antimicrobial Protection: BioBlock Plus - Resistance against the growth of mold/mildew and gram positive and gram negative odor and stain causing bacteria.
 - 13. Acceptable Product: Georgian, 794 as manufactured by Armstrong World Industries.

B. SUSPENSION SYSTEMS (used with ACT-3)

- 1. Components: All main beams and cross tees shall be commercial quality hot-dipped galvanized (galvanized steel, aluminum, or stainless steel) as per ASTM A 653. Main beams and cross tees are double-web steel construction with type exposed flange design. Exposed surfaces chemically cleansed, capping pre-finished galvanized steel (aluminum or stainless steel) in baked polyester paint. Main beams and cross tees shall have rotary stitching (exception: extruded aluminum or stainless steel).
 - a. Structural Classification: ASTM C 635 Heavy Duty.
 - b. Color: White and match the actual color of the selected ceiling tile, unless noted otherwise.
 - c. Acceptable Product: Prelude XL 15/16" Exposed Tee as manufactured by Armstrong World Industries, Inc.

2. High Humidity Finish: Comply with ASTM C 635 requirements for Coating Classification for Severe Environment Performance where high humidity finishes are indicated.
 - a. SS Prelude Plus by Armstrong World Industries, Inc. - 100% Type 304 STAINLESS Steel.
 - b. AL Prelude Plus by Armstrong World Industries, Inc. - all ALUMINUM
 - c. Prelude Plus XL Fire Guard by Armstrong World Industries, Inc., G-60 Hot dipped galvanized /aluminum capping
 - d. Structural Classification: ASTM C 635 duty class.
 - e. Color: [Stainless for SS only][White aluminum] [Clear Anodized Aluminum]
3. Attachment Devices: Size for five times design load indicated in ASTM C 635, Table 1, Direct Hung unless otherwise indicated.
4. Wire for Hangers and Ties: ASTM A 641, Class 1 zinc coating, soft temper, pre-stretched, with a yield stress load of at least three design load, but not less than 12 gauge.
5. Edge Moldings and Trim: Metal or extruded aluminum of types and profiles indicated or, if not indicated, manufacturer's standard moldings for edges and penetrations, including light fixtures, that fit type of edge detail and suspension system indicated. Provide moldings with exposed flange of the same width as exposed runner.
6. Accessories

2.5 ACOUSTICAL CEILING UNITS & SUSPENSION SYSTEMS

A. Acoustical Ceiling Units, **Panels Type ACT-4:**

ACT-4 Georgian 1752, Tegular Edged 2'x2', Color: White [used with Decorative Grid: Prelude XL 360 Painted Grid in Custom Color (Match Sw-6307 Finewine, by Sherwin-Williams Paints), and Perimeter Trim: 4" Axiom Classic Perimeter Trim In Custom Color (Match Sw-6307 Finewine, By Sherwin-Williams Paints)], by Armstrong Commercial Ceilings.

1. Surface Texture: Medium
2. Composition: Mineral Fiber
3. Color: White
4. Size: 24in X 24in X 5/8in
5. Edge Profile: Beveled Tegular for interface with Prelude XL 15/16" Exposed Tee.
6. Noise Reduction Coefficient (NRC): ASTM C 423; Classified with UL label on product carton, 0.55.
7. Ceiling Attenuation Class (CAC): ASTM C 1414; Classified with UL label on product carton, 35
8. Emissions Testing: Section 01350 Protocol, < 13.5 ppb of formaldehyde when used under typical conditions required by ASHRAE Standard 62.1-2004, "Ventilation for Acceptable Indoor Air Quality"
9. Flame Spread: ASTM E 1264; Class A (UL)
10. Light Reflectance (LR): ASTM E 1477; White Panel: Light Reflectance: 0.86.
11. Dimensional Stability: HumiGuard Plus - Temperature is between 32°F (0° C) and 120°F (49° C). It is not necessary for the area to be enclosed or for HVAC systems to be functioning. All wet work (plastering, concrete, etc) must be complete and dry.
12. Antimicrobial Protection: BioBlock Plus - Resistance against the growth of mold/mildew and gram positive and gram negative odor and stain causing bacteria.
13. Acceptable Product: Georgian, 1752 as manufactured by Armstrong World Industries.

B. Decorative Suspension System: Prelude XI 360° Painted Grid in Special Color (used with ACT-4)

1. Components: All main beams and cross tees shall be commercial-quality galvanized steel coating as per ASTM A 653. Exposed surfaces chemically cleansed, capping pre-finished galvanized steel. Main Beams and Cross Tees are double-web steel construction and have a 15/16" type exposed flange design. Cross Tees shall have staked-on end detail allowing for easy cross tee removal and remounting.

- a. Structural Classification: ASTM C635 Heavy Duty.
- b. Color: As selected by architect from manufacturer's standard color offering.
- c. Prelude XL 360° Painted Grid, as manufactured by Armstrong World Industries.
2. Finish: All steel roll-formed parts shall be chemically cleansed hot dipped galvanized steel. Main Beams and Cross Tees shall be painted 360° and prefinished in (3.0 mil thick powder coating) (baked polyester paint).
3. Attachment Devices: Size for five times design load indicated in ASTM C635, Table 1, Direct Hung unless otherwise indicated.
4. Wire for Hanger and Ties: ASTM A 641, Class 1 zinc coating, soft temper, prestretched, with a yield stress load of at least three times design load, but not less than 12 gauge.
5. Edge Moldings and Trim: Metal or extruded aluminum of types and profiles indicated or, if not indicated, manufacturer's standard moldings for edges and penetrations, including light fixtures, that fit type of edge detail and suspension system indicated. Provide moldings with exposed flange of the same width as exposed runner.

C. Custom Perimeter Trim (used with ACT-4)

1. Product/Manufacturer: Axiom-Classic Custom Perimeter Trim; Armstrong World Industries, Inc.
2. Components: Edge trim system for suspended ceiling system, extruded aluminum alloy 6063 trim channel, 10 foot straight or curved profiles to minimum (24 inches for 2 through 8 inch high) (36 inch for 10 and 12 inch high) inside and outside radii for acoustical and for drywall applications.
 - a. Axiom Trim Channel: 4" wide face with 3/4 inch horizontal legs, straight or curved sections with special bosses formed for attachment to the Axiom tee-bar connection clip or hanging clip; commercial quality, extruded aluminum, factory-finished in (factory-applied baked polyester paint to match Armstrong) () color; (custom paint finish color-matched to approved sample).
 - b. Axiom Outside Corner Posts (Straight Only): Commercial quality extruded aluminum sections formed to match the Axiom trim channel profile; pre-assembled with built-in splice plates that connect to straight Axiom sections; 7/8 inch x 7/8 inch x 4"; factory-finished in (factory-applied baked polyester paint to match Armstrong) () color; (custom paint finish color-matched to approved sample).
 - 1) AX4OSCP - 4" Axiom Classic Outside Corner Post
 - c. Axiom Inside Corners (Straight Only): Commercial quality extruded aluminum sections formed to match the Axiom trim channel profile that connect to straight Axiom sections, 12 inch x 3/4 inch x 4" factory-finished in (factory-applied baked polyester paint to match Armstrong) () color; (custom paint finish color-matched to approved sample).
 - 1) AX4QSI - 4" inside corner
 - d. Accessories:
 - 1) AXHGC - Hanging clip, commercial quality aluminum, unfinished, used to align grid members that extend beyond the lower edge of the trim.
 - 2) AX2HGC - Hanging clip, commercial quality aluminum, unfinished, used when suspension wires must be attached directly to the trim sections.
 - 3) AXSPLICE - Splice with set screws, galvanized steel, unfinished, used to attached factory-mitered inside corners
 - 4) AX4SPLICE - Splice with set screws, galvanized steel, unfinished, used to attach joints between sections of trim.
 - 5) AXTBC - T-bar Connector Clip, galvanized steel, unfinished, used to attach channel trim to supporting suspension members.
 - 6) AXSPTHDC - Perimeter Trim Hold Down Clip used to secure cut edges of metal panels at the Axiom trim.

- 7) AXBTSTR - Drywall Bottom Trim Straight, extruded aluminum, 120 inches x 1-9/64 inch x 27/32 inch, used to finish edges of 5/8 inch drywall that is applied to the bottom surface of the Axiom.
- 8) AXBTCUR - Drywall Bottom Trim Curved, extruded aluminum, 120 inches x 1-9/64 inch x 27/32 inch, used to finish edges of 5/8 inch drywall that is applied to the bottom surface of the Axiom.

The specifications listed herein are not to be considered restrictive to one source of supply. However, items offered must be equal in quality and performance. The offeror must include with his bid/quote, supporting product data sufficient for the University to determine equality and acceptability. The right is reserved to reject any offering in which the items offered are considered unsatisfactory in any manner. The University will determine if minor deviations from the listed features are acceptable. (SPM022)

Award will be made to one vendor for the entire quantity. (SPM034)

Deliveries shall be FOB Destination, freight prepaid. (SPM055)

Drawings Attached (2 pages)

USC-RFQ-1595-LW

Furnish and Deliver All New Ceiling Material for Williams Brice Stadium

REQUEST FOR PRICE QUOTATION / BID SCHEDULE

Item	Qty	Unit of Measure	Description	Unit Price	Extended Price
1	1	Lot	All acoustical ceilings – grid, tile and accessories, wall mold to be 1" x 2" with all seismic accessories	\$	\$

Resident Vendor Preference _____
 SC End Product Preference _____
 US End Product Preference _____

Item	Qty	Unit of Measure	Description	Unit Price	Extended Price
2	1	Lot	All clouds to include grid (custom color), tile, aluminum border (custom color) and accessories	\$	\$

Resident Vendor Preference _____
 SC End Product Preference _____
 US End Product Preference _____

Item	Qty	Unit of Measure	Description	Unit Price	Extended Price
3	1	Lot	Linear metal ceilings, all material and accessories	\$	\$

Resident Vendor Preference _____
 SC End Product Preference _____
 US End Product Preference _____

Item	Qty	Unit of Measure	Description	Unit Price	Extended Price
4	1	Lot	Freight	\$	\$

TOTAL AMOUNT \$ _____

Company Name: _____ **Delivery Time:** _____

GENERAL CONDITIONS

DEFAULT: In case or default by the Contractor, the University of South Carolina reserves the right to purchase any or all items in default in the open market, charging the Contractor with any additional costs. The defaulting Contractor shall not be considered a responsible bidder until the assessed charge has been satisfied.

All amendments to and interpretation of this RFQ shall be in writing. The procurement officer shall not be legally bound by any amendment or interpretation that is not in writing.

SC/US PREFERENCE: In order to receive the South Carolina/United States made, manufactured or grown end-product preference, you must check the appropriate space (s) provided on the face of the quotation form. This preference does not apply to services.

Any contract entered into by the University of South Carolina or its agencies resulting from this quotation shall be subject to cancellation at the end of any fiscal or appropriated year unless otherwise provided by law.

Payment will be made in accordance with Section 11-35-45 of the South Carolina Consolidated Procurement Code and Disbursement Regulations. Delay in receiving invoices, as well as errors and omissions on the invoices, will be considered just cause for withholding payment without losing discount privileges. The University reserves the right to withhold payment or make such deductions as may be necessary to protect the University from loss or damage because of defective work, claims, damages or to pay for repair of correction of materials furnished hereunder.

Quoted prices must remain firm for a period of thirty days beyond the Request for Quotation deadline. Unit prices will govern over extended prices unless otherwise stated.

The University of South Carolina shall consider payment discounts in the award of this contract when such discounts are for thirty days or more after final inspection and acceptance of contract requirements. Payment discounts for less than thirty days are encouraged but shall not be a factor in award determination. Please state your discount terms using the above referenced information as the University's position on the matter.

All materials and products offered must be guaranteed to meet and comply with the requirements all the specifications, terms and conditions indicated or referred to.

The award will be made in accordance with Section 11-35-1520 of the South Carolina Consolidated Procurement Code.

The University reserves the right to reject any and all quotations and to cancel the solicitation; waive any and all technicalities; the University reserves the right to reject any quotation in which the delivery time indicated to be of substantial length to cause disruption and/or delay in operation for which the item(s) is/are intended; ambiguous quotations which are uncertain as to terms, delivery, quantity or compliance with specifications may be rejected.

The successful contractor assumes sole responsibility and shall hold harmless the University of South Carolina, its directors, officers, employees and agents from and against any and all claims, actions or liabilities of any nature which may be asserted against them by third parties in connection with the performance of the successful bidder, its directors, officers, employees and agents under this agreement. The University of South Carolina agrees to accept responsibility for claims, actions or liabilities resulting from negligent acts of its employees occurring within the scope of their employment which may be asserted against them by third parties in connection with the performance of the University of South Carolina, its members, directors, officers, employees and agents under this agreement.

Contractor agrees not to refer to award of this contract in commercial advertising in such a manner to state or imply that the products or service provided are endorsed or preferred by the user.

Upon award of a contract under this quotation, the person, partnership, association or corporation to whom the award is made must comply with the laws of South Carolina that require such person or entity to be authorized and/or licensed to do business in this State. Notwithstanding the fact that applicable statutes may be exempt or exclude the successful quoter from requirements that it be authorized and/or licensed to do business in this State, by submission of this signed quote, the quoter agrees to subject itself to the jurisdiction and process of the courts of the State of South Carolina as to all matters and disputes arising or to arise under the contract and the performance thereof, including any questions as to the liability for taxes, licenses or fees levied by the State.

Termination: Subject to the provisions below, the contractor may be terminated for any reason by the University providing a thirty-day advance notice in writing is given to the contractor.

Termination for Convenience: In the event that this contract is terminated or cancelled upon request and for the convenience of the University may negotiate reasonable termination costs, if applicable.

Termination for Cause: Termination by the University for cause, default, or negligence on the part of the Contractor shall be excluded from the foregoing provisions; termination costs, if any, shall not apply. The thirty day advance notice requirement is waived and the default provision in this bid shall apply.

HIPAA Law: The Contractor agrees that to the extent that some or all of the activities within the scope of this Contract are subject to the Health Insurance Portability Accountability Act of 1996, P.L. 104-91, as amended (“HIPAA”), or its implementing regulations, it will comply with the HIPAA requirements and will execute such agreements and practices as the University of South Carolina may require to ensure compliance. Additional information may be viewed at: <http://www.sc.edu/hipaa/>

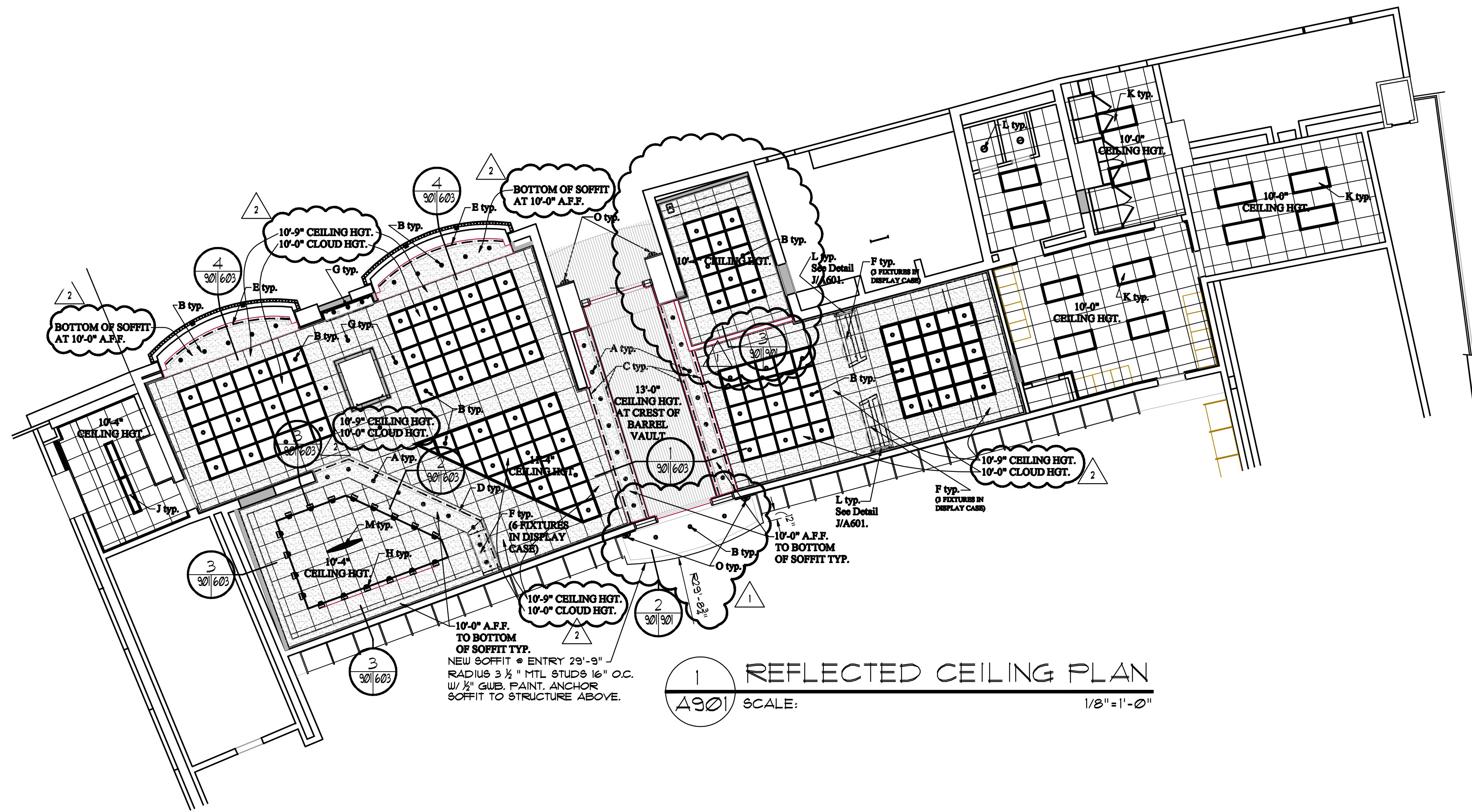
SPECIAL CONDITIONS

LICENSES, PERMITS, INSURANCE: All costs for required licenses, permits and insurance shall be borne by the Bidder.

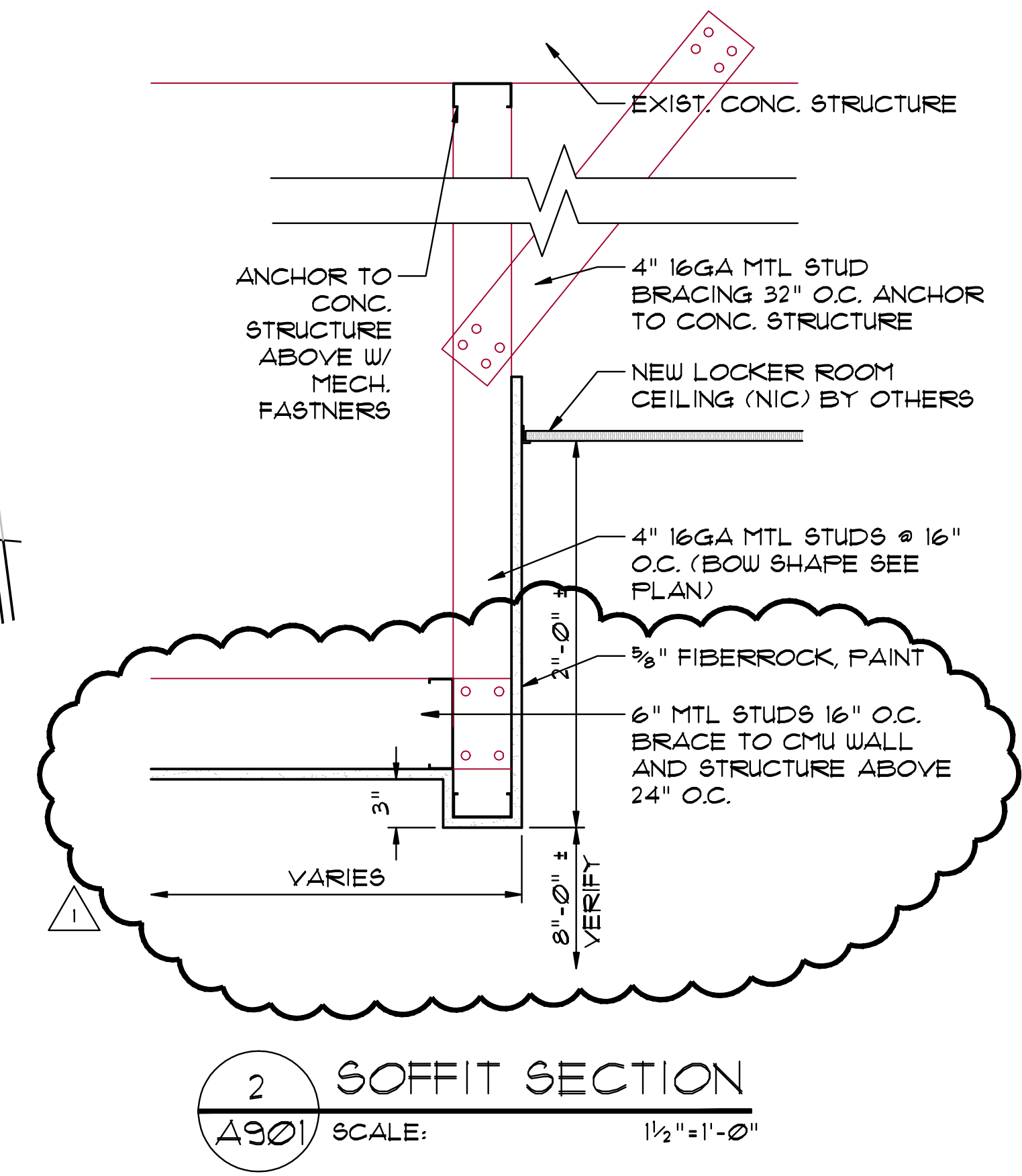
The University of South Carolina requires all contractual activities to be performed in a manner that is consistent with all applicable federal, state and local laws, regulations, rules, rulings and ordinances. These include, but are not limited to: the Occupational safety and Health Act, The Environmental Protection Act, The South Carolina Hazardous Waste Management Act.

IMPORTANT – Please Note

Vendors, we **MUST** have your Federal ID # (company) or Social Security # (individual) before processing any invoices for payment. Failure to provide this information will result in delay of payments until this information is received. Please include this information with your quote.

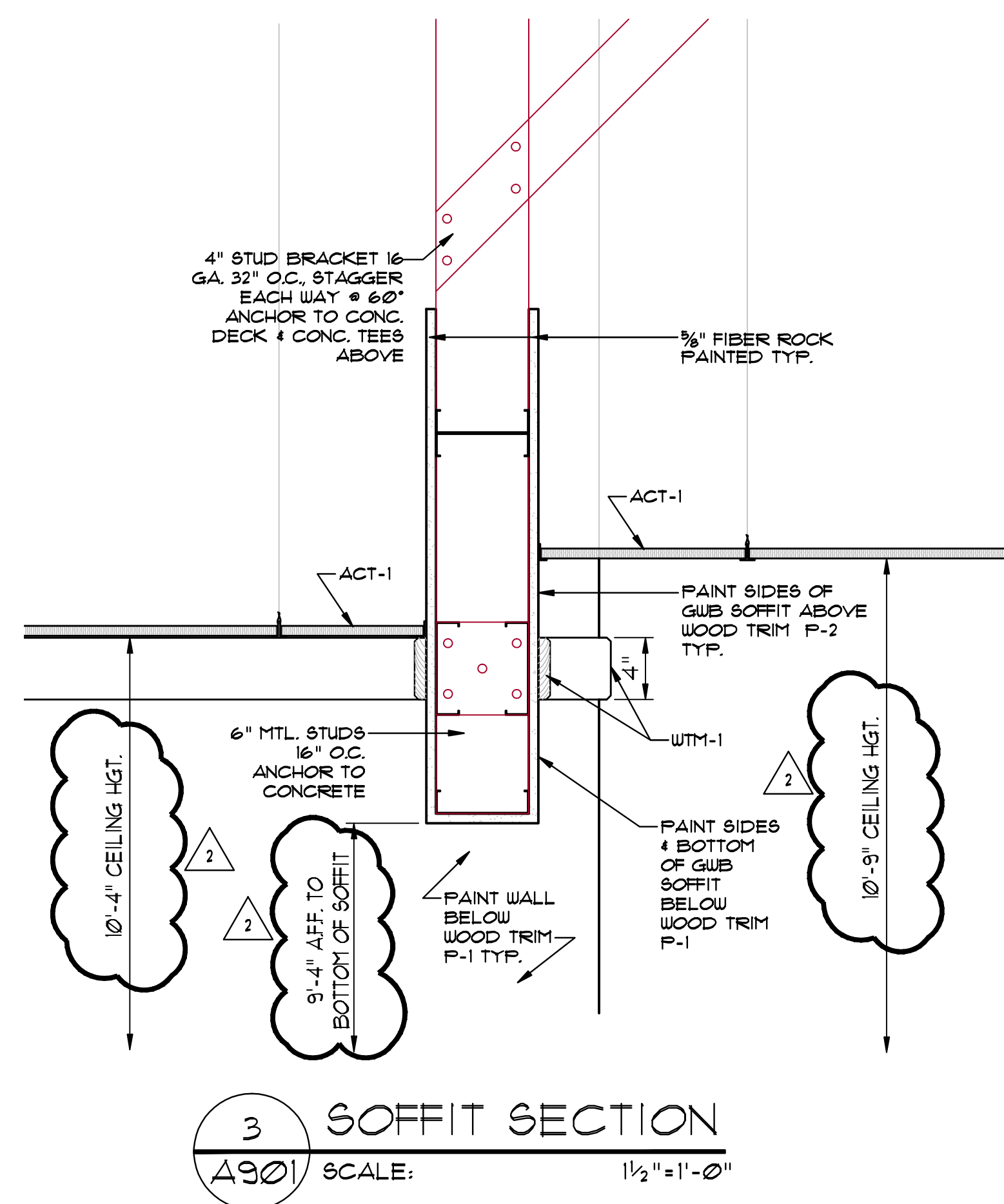


1 REFLECTED CEILING PLAN
 A901 SCALE: 1/8"=1'-0"



2 SOFFIT SECTION
 A901 SCALE: 1/2"=1'-0"

LIGHTING LEGEND:
 REFERENCE ELECTRICAL PLANS FOR LIGHTING FIXTURE TYPES.



3 SOFFIT SECTION
 A901 SCALE: 1/2"=1'-0"

Jumper Carter Sease Architects PA
 412 Meeting Street
 West Columbia
 South Carolina

STATE OF SOUTH CAROLINA
 REGISTERED ARCHITECT
 JUMPER CARTER SEASE ARCHITECTS, PA
 WEST COLUMBIA
 C-74002

STATE OF SOUTH CAROLINA
 REGISTERED ARCHITECT
 MARRY TODD SEASE
 WEST COLUMBIA
 4136

PLOT SCALE 96
 PLOT DATE 05/08/09
 FILE NAME 06102A901.dwg

FOOTBALL PLAYERS LOUNGE
 WILLIAMS BRICE STADIUM
 UNIVERSITY OF SOUTH CAROLINA

REVISIONS

1	6.18.09
2	9.09.09

COMM. NO. 08102
 DATE MAY 2009
 SHEET NO. A901 OF

these drawings are the property of Jumper Carter Sease Architects, PA and may not be reproduced, copied or used in whole or in part, without written consent of the architect and any infringement will be subject to legal action.

DOOR SCHEDULE

NO.	TY.	WIDTH	HEIGHT	TKS.	MATL.	FINISH	SIZE	FRAME					FIRE LBL.	REMARKS
								GL. TYPE	TY.	H	J	S		
100	C	PAIR 3'-0"	8'-0"	1 1/2"	ALUM.	PRE-FIN	3	H-3	J-3	S-1	ALUM.	PRE-FIN	-	-
101	C	PAIR 3'-0"	8'-0"	1 1/2"	SUC	STAIN	2	H-3	J-3	S-3	ALUM.	PRE-FIN	-	-
102	C	3'-0"	7'-0"	1 1/2"	SUC	STAIN	-	-	-	S-2	EXIST.	PAINT	-	STRIP EXIST. PAINT. SAND, SMOOTH & REPAINT.
103	-	NOT USED	-	-	-	-	-	-	-	-	-	-	-	-
103A	-	NOT USED	-	-	-	-	-	-	-	-	-	-	-	-
104	A	3'-0"	7'-2"	1 1/2"	SUC	STAIN	-	-	-	-	H-1	J-1	S-2	PAINT
105	A	3'-0"	7'-2"	1 1/2"	SUC	STAIN	-	-	-	-	H-1	J-1	S-2	PAINT
106	-	EXISTING DOOR	-	-	-	STAIN	-	-	-	-	EXIST.	PAINT	-	SAND AND REFINISH DOOR PROVIDE NEW DOOR HARDWARE
107	-	EXISTING DOOR	-	-	-	STAIN	-	-	-	-	EXIST.	PAINT	-	-
108	A	3'-0"	7'-2"	1 1/2"	SUC	STAIN	-	-	-	-	H-2	J-2	S-1	PAINT

FINISH SCHEDULE

NO.	NAME	FLOOR	BASE	WALLS			CEILING			REMARKS
				NORTH	EAST	SOUTH	WEST	MATERIAL	HGT.	
100A	ENTRY	CPT-3	STUCCO	STUCCO	STUCCO	STUCCO	LMC-2	LMC-1	LMC-1	10'-2" NEW SOFFIT. SEE DETAIL
101	LOUNGE ENTRY	LVF-1/GF-1	UB-1	UB-1	UB-1	UB-1	ACT-1/ACT-4	ACT-1/ACT-4	ACT-1/ACT-4	SEE DETAIL OF NEW CANOPY
102	LOUNGE AREA	LVF-1/GF-2	UB-1	UB-1	UB-1	UB-1	ACT-1/ACT-4	ACT-1/ACT-4	ACT-1/ACT-4	
103	LOUNGE AREA	CPT-1	UB-1	UB-1	UB-1	UB-1	ACT-1/ACT-4	ACT-1/ACT-4	ACT-1/ACT-4	
104	COMPUTER RT1	CPT-1	UB-1	UB-1	UB-1	UB-1	ACT-1/ACT-4	ACT-1/ACT-4	ACT-1/ACT-4	
105	LOUNGE AREA	LVF-1/GF-1/GF-2	UB-1	UB-1	UB-1	UB-1	ACT-1/ACT-4	ACT-1/ACT-4	ACT-1/ACT-4	
106	LOUNGE AREA	LVF-1/GF-1/GF-2	UB-1	UB-1	UB-1	UB-1	ACT-1/ACT-4	ACT-1/ACT-4	ACT-1/ACT-4	
107	LOUNGE AREA	CPT-1	UB-1	UB-1	UB-1	UB-1	ACT-1/ACT-4	ACT-1/ACT-4	ACT-1/ACT-4	
108	LOUNGE AREA	CPT-1	UB-1	UB-1	UB-1	UB-1	ACT-1/ACT-4	ACT-1/ACT-4	ACT-1/ACT-4	
109	LOUNGE AREA	CPT-1	UB-1	UB-1	UB-1	UB-1	ACT-1/ACT-4	ACT-1/ACT-4	ACT-1/ACT-4	
110	MEN'S LOCKERS	CPT-1	RB-1	RB-1	RB-1	RB-1	ACT-2	ACT-2	ACT-2	
110A	ENTRY	CPT-3	RB-1	RB-1	RB-1	RB-1	ACT-2	ACT-2	ACT-2	
111	TOILET	EXG/CT*	EXG/CT*	EXG/CT*	EXG/CT*	EXG/CT*	ACT-3	ACT-3	ACT-3	PATCH CERAMIC TILE FLOOR BASE AND WALL TILE
112	STORAGE	VCT-1	RB-1	RB-1	RB-1	RB-1	ACT-3	ACT-3	ACT-3	
113	MECHANICAL	NO WORK	-	-	-	-	-	-	-	

FINISH SCHEDULE COLOR KEY

REFERENCE PLANS, ELEVATIONS AND SECTIONS FOR FINISH AND COLOR DISTRIBUTION.

FLOORS:

CPT-1: MODULAR CARPET TILE - STYLE: INITIATIVE III ENCYCLE MODULAR TILE SYSTEM, PATTERN: G1003, COLOR: 485 AEROSA BROWN/LS, LEVEL: SOLID CUT & LOOP, 24" X 24" MODULAR TILE, 7/16" OZ. FACE WEIGHT, ANTI-STATIC AND FERRAL-FRESH, 18x9" X 18x9" MODULAR TILE BY THEES.

CPT-2: MODULAR CARPET TILE BORDERS CONSISTING OF TUD (2) COLORS.

CPT-2A: STYLE: COORDINATION MODULAR ECOLEXY L1095, COLOR: WINKLE 8989, LEVEL: SOLID CUT & LOOP, 24" X 24" MODULAR TILE, 7/16" OZ. FACE WEIGHT, ANTI-STATIC AND FERRAL-FRESH, 18x9" X 18x9" MODULAR TILE BY THEES.

CPT-2B: STYLE: COORDINATION MODULAR ECOLEXY L1095, COLOR: APPLICABLE 8989, LEVEL: SOLID CUT & LOOP, 24" X 24" MODULAR TILE, 7/16" OZ. FACE WEIGHT, ANTI-STATIC AND FERRAL-FRESH, 18x9" X 18x9" MODULAR TILE BY THEES.

CPT-3: HEAVY-DUTY CONTRACT TILE - STYLE: 'CENTAUR' COLOR: PHANTOM BLACK 100% PEW/PERMANENT ANTI-STATIC AND FERRAL-FRESH, 18x9" X 18x9" MODULAR TILE BY THEES.

LVF-1: LUXURY VNTL FLOOR (WOODGRAN PLANK) - STYLE: NATURE'S PATHS SELECT PRINCETON CHESTNUT, COLOR: 1893 NATURAL, 3" X 12", 7/16", 58" MULTIPLE LENGTHS (SANDERED ARRANGEMENT), BY MANNINGTON COMMERCIAL, ALSO COORDINATE WATER-VET CUT LOGS WITH LFT-1 AS SHOWN ON DRAWINGS.

LVF-2: LUXURY VNTL FLOOR BORDER (WOODGRAN PLANK) CONSISTING OF TUD (2) COLORS.

LVF-2A: STYLE: NATURE'S PATHS SELECT PRINCETON CHESTNUT, COLOR: 1810 CANTON, 3" X 12", 7/16", 58" MULTIPLE LENGTHS (SANDERED ARRANGEMENT), BY MANNINGTON COMMERCIAL.

LVF-2B: STYLE: NATURE'S PATHS SELECT PRINCETON CHESTNUT, COLOR: 1810 CANTON, 3" X 12", 7/16", 58" MULTIPLE LENGTHS (SANDERED ARRANGEMENT), BY MANNINGTON COMMERCIAL.

LVF-2C: STYLE: NATURE'S PATHS SELECT PRINCETON CHESTNUT, COLOR: 1810 CANTON, 3" X 12", 7/16", 58" MULTIPLE LENGTHS (SANDERED ARRANGEMENT), BY MANNINGTON COMMERCIAL.

LVF-1: LINOLEUM GRAPIC FLOOR LOGS (9) WATER-VET CUT INTO LVF-1 AS SHOWN ON DRAWINGS. A TOTAL OF TUD (2) LOGS, CONSISTING OF FOUR (4) COLORS.

BASES:

RB-1: VULCANIZED RUBBER BASE 4TH COVE, STYLE: 'FINNACLE' TYPE 13, COLOR: 100 BLACK (USE 100 FT. ROLLS) BY ROFFE.

UB-1: WOOD BASE MOLDING - 1/2" X 4 1/4" CLEAR WHITE OAK, STAINED TO MATCH SAMPLE SUPPLIED BY ARCHITECT. SEE MOLDING PROFILE DETAIL SHEET 16003.

LMC-1: LIGHT COVE TRIM MOLDING - 1/2" X 1/2" X 4 1/4" CLEAR WHITE OAK, STAINED TO MATCH SAMPLE SUPPLIED BY ARCHITECT. SEE MOLDING PROFILE DETAIL SHEET 16003.

UM-1: WALL TRIM MOLDING - 1/2" X 4 1/4" CLEAR WHITE OAK, STAINED TO MATCH SAMPLE SUPPLIED BY ARCHITECT. SEE MOLDING PROFILE DETAIL SHEET 16003.

PM-1: PLASTER TRIM MOLDING - 1/2" X 4 1/4" CLEAR WHITE OAK, STAINED TO MATCH SAMPLE SUPPLIED BY ARCHITECT. SEE MOLDING PROFILE DETAIL SHEET 16003.

CM-1: COLUMN CAP TRIM MOLDING - 1/2" X 3 1/4" CLEAR WHITE OAK, STAINED TO MATCH SAMPLE SUPPLIED BY ARCHITECT. SEE MOLDING PROFILE DETAIL SHEET 16003.

WB-1: WOOD BASE MOLDING - 1/2" X 4 1/4" CLEAR WHITE OAK, STAINED TO MATCH SAMPLE SUPPLIED BY ARCHITECT. SEE MOLDING PROFILE DETAIL SHEET 16003.

PAINTS:

P-1: PAINT - SUE-6307 FINE LINE (GARNET) BY SHERWIN-WILLIAMS.

P-2: PAINT - SUE-6307 CAVAR (BLACK) BY SHERWIN-WILLIAMS.

P-3: PAINT - SUE-1006 EXTRA WHITE BY SHERWIN-WILLIAMS.

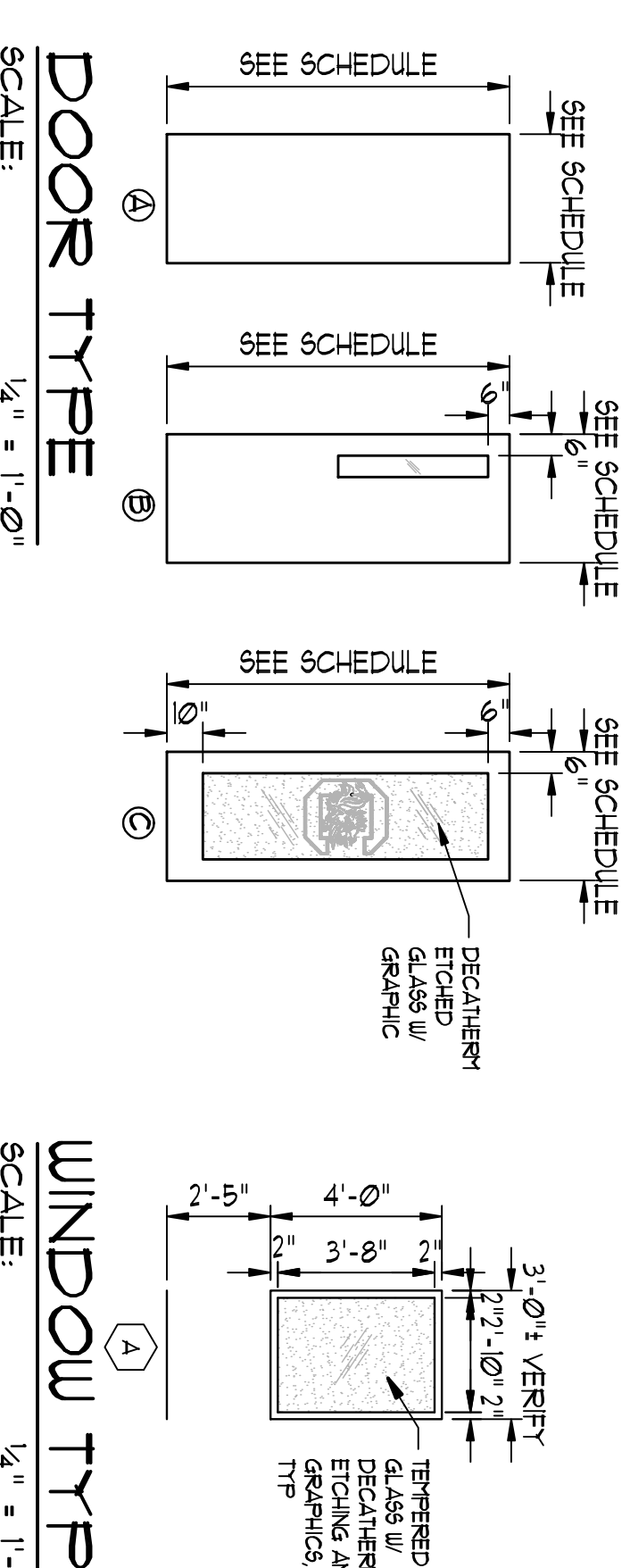
P-4: PAINT - SUE-1001 NATURAL CHOICE BY SHERWIN-WILLIAMS.

WALLCOVERINGS:

VMC-1: ACTION GRAPHIC VNTL WALLCOVERING BY GRAPHICS SUPPLIER.

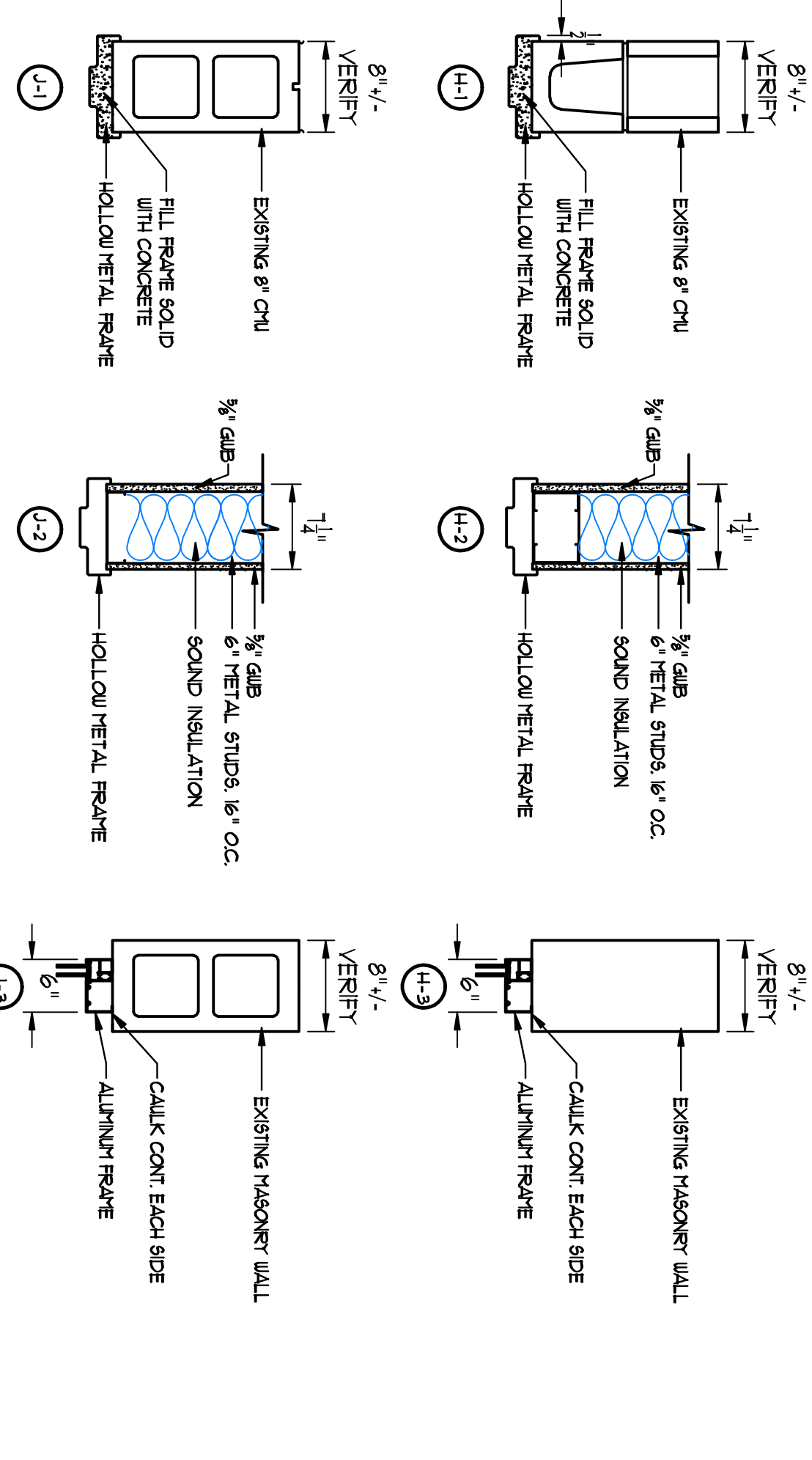
VMC-2: ACTION GRAPHIC VNTL WALLCOVERING BY GRAPHICS SUPPLIER.

VMC-3: ACTION GRAPHIC VNTL WALLCOVERING BY GRAPHICS SUPPLIER.



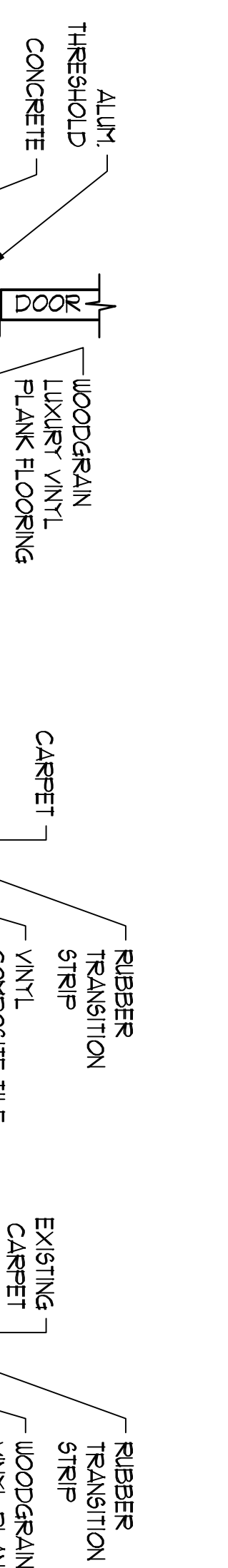
FRAME TYPES

SCALE: 1/4" = 1'-0"



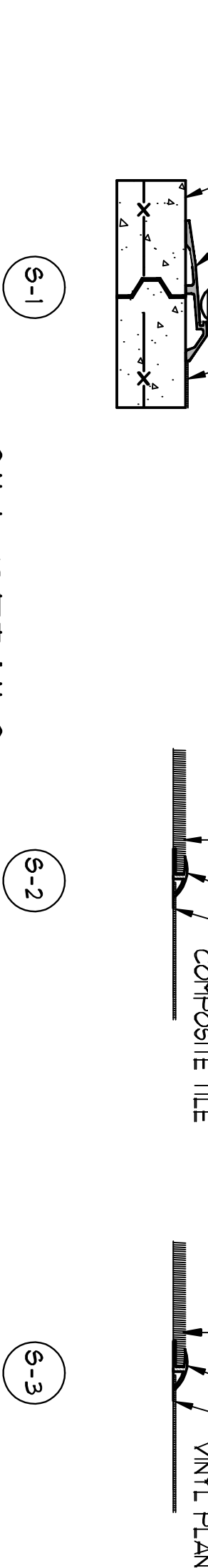
HEAD AND JAMB TYPES

SCALE: 1/4" = 1'-0"



SILL DETAILS

SCALE: 1/4" = 1'-0"



these drawings are the property of Jumper Carter Seese Architects, PA and may not be reproduced, copied or used in whole or in part without written consent of the architect and any infringement will be subject to legal action.

Jumper Carter Seese
Architects
PA
412 Meeting Street
West Columbia
South Carolina

STATE OF SOUTH CAROLINA
REGISTERED ARCHITECT
JUMPER CARTER SEESE ARCHITECTS, PA
WEST COLUMBIA, SC 29169
C-714002
WEST COLUMBIA, SC 29169
4136

PLOT SCALE: 4/8
PLOT DATE: 03/08/09
FILE NAME: 09102A501.dwg

FOOTBALL PLAYERS LOUNGE
WILLIAMS BRICE STADIUM
UNIVERSITY OF SOUTH CAROLINA

REVISIONS
6.3.09

CONTR. NO.: 08102
DATE: MAY 2009
SHEET NO.

A501
SHEET OF