



U N I V E R S I T Y O F
SOUTH CAROLINA

AMENDMENT NO. 5 TO SOLICITATION

TO: ALL VENDORS

FROM: Charles Johnson, Procurement Manager

SUBJECT: SOLICITATION NUMBER: USC-RFP-1761-CJ

SOLAR PV INSTALLATION AT USC BASEBALL STADIUM

DATE: June 29, 2010

This Amendment **No. 5** modifies the Request For Proposals only in the manner and to the extent as stated herein.

BIDDER SHALL ACKNOWLEDGE RECEIPT OF AMENDMENT **NO. 5** IN THE SPACE PROVIDED BELOW AND RETURN IT WITH THEIR BID RESPONSE. FAILURE TO DO SO MAY SUBJECT BID TO REJECTION.

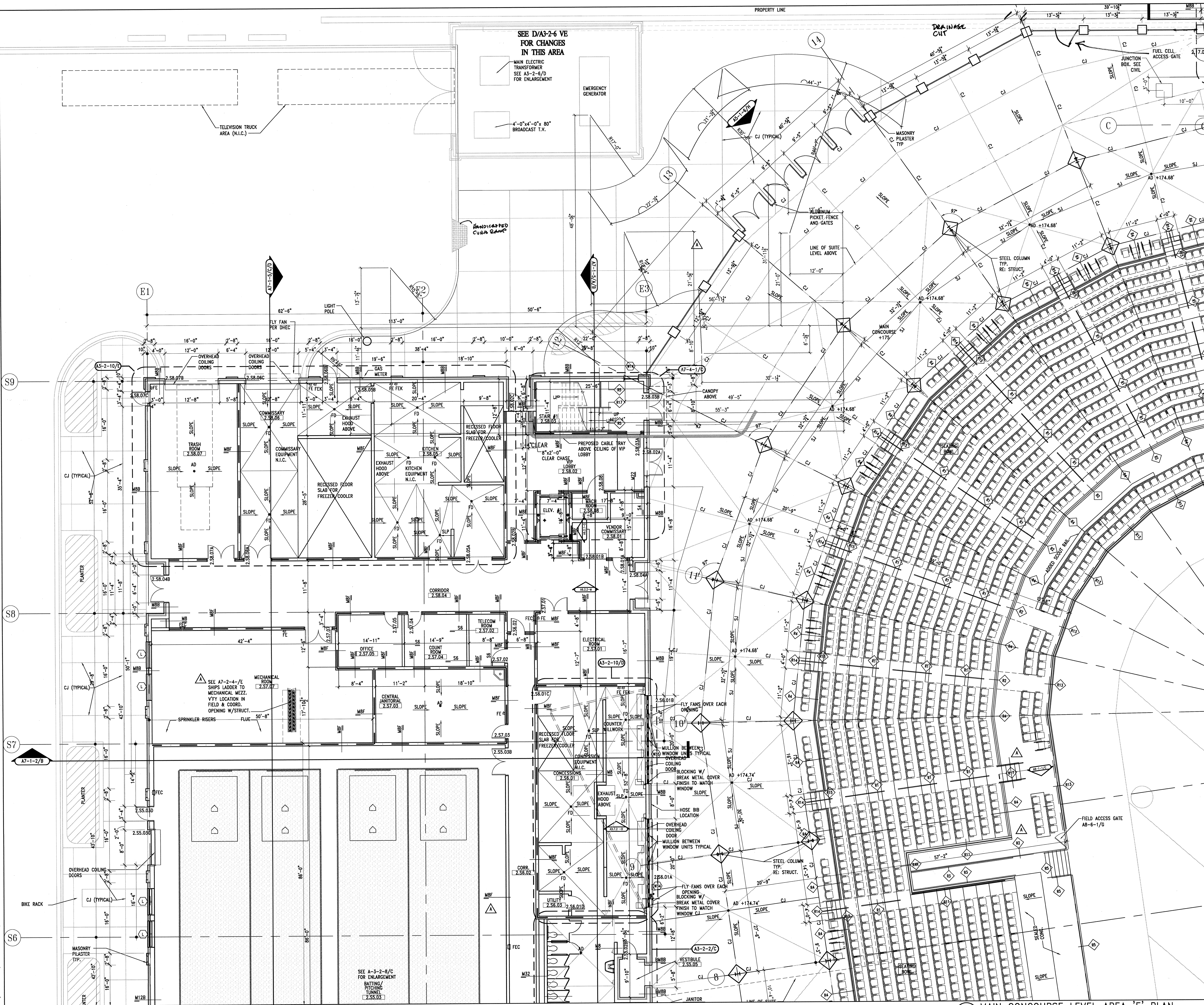
Authorized Signature

Name of Offeror

Date

THE FOLLOWING DRAWINGS ARE THE ACTUAL PDFs FOR IMPROVED RESOLUTION AND QUALITY:

Drawings A2-2E-VE.pdf, A2-1BD-VE.pdf, and A2-2A-VE.pdf are Detailed Area Drawings for the Baseball Stadium



A MAIN CONCOURSE LEVEL AREA 'E' PLAN
1/8"=1'-0"



CDA ARCHITECTS
1136 Washington Street, Suite 500
Columbia, South Carolina 29201
803-799-5502 (P)
803-799-2014 (F)

HOK
SPORT+VENUE+EVENT

HOK SPORTS FACILITIES GROUP, LLC
Architecture, Engineering, Planning,
Interiors, Facility Programming
300 Wyandotte, Suite 300
Kansas City, Missouri 64105

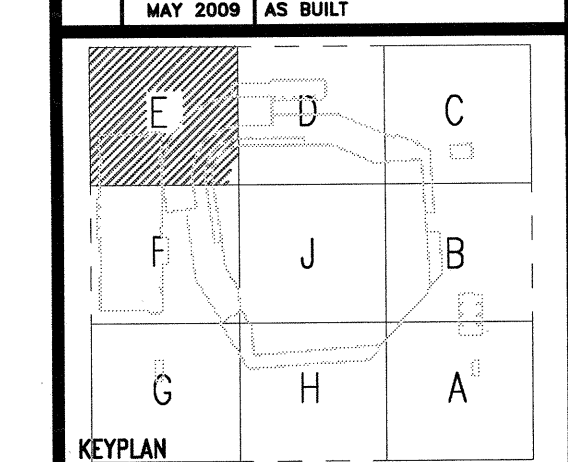
**Baseball Stadium
Stadium Construction Package**

UNIVERSITY OF
SOUTH CAROLINA
Campus Planning & Construction
Columbia, South Carolina, 29208

CONSTRUCTION DOCUMENT
SUBMITTAL
May 14, 2007

NO.	DATE	DESCRIPTION
10-04-07	ADDENDUM - 2	
JAN 2008	V.E. REVISIONS	
4-9-08	REVISED ENTRY/SPOT ELEVATION	
7-14-08	REVISED RAIL	
10-2-08	REVISED CONCRETE POUR	
12-12-08	REVISED CONCESSION WINDOWS	

6/10/09 AS BUILT

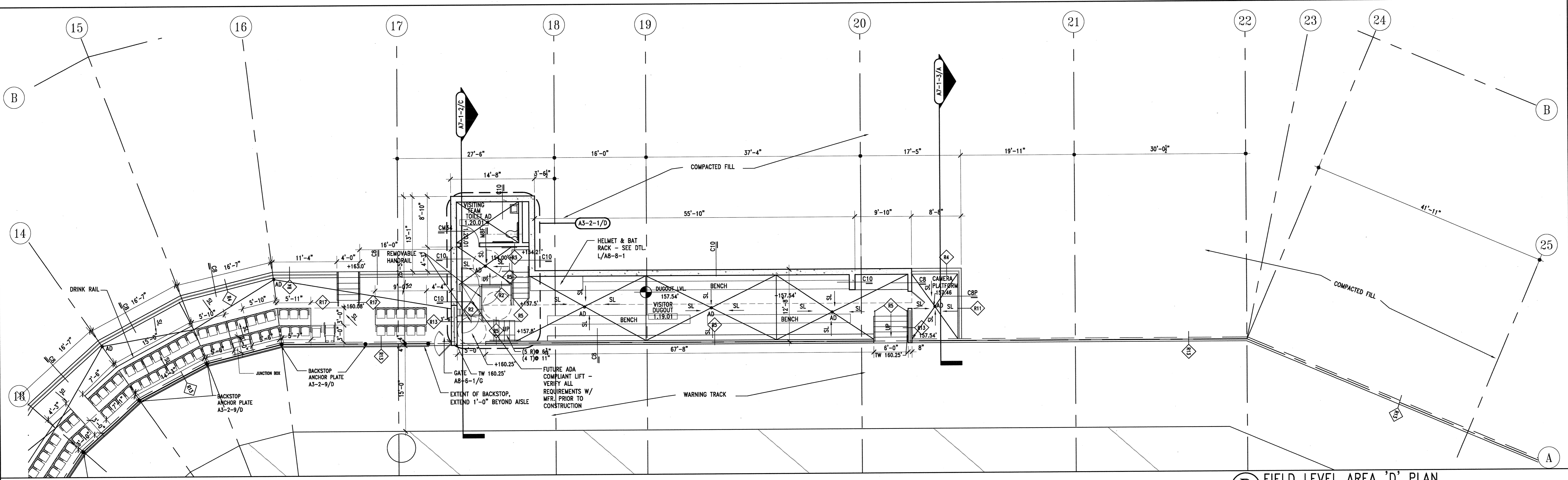


PROJECT NO. 04-193	ISSUED BY: CDA ARCHITECTS
DRAWN BY:	REVIEWED BY:
ISSUE DATE:	
SHEET TITLE:	

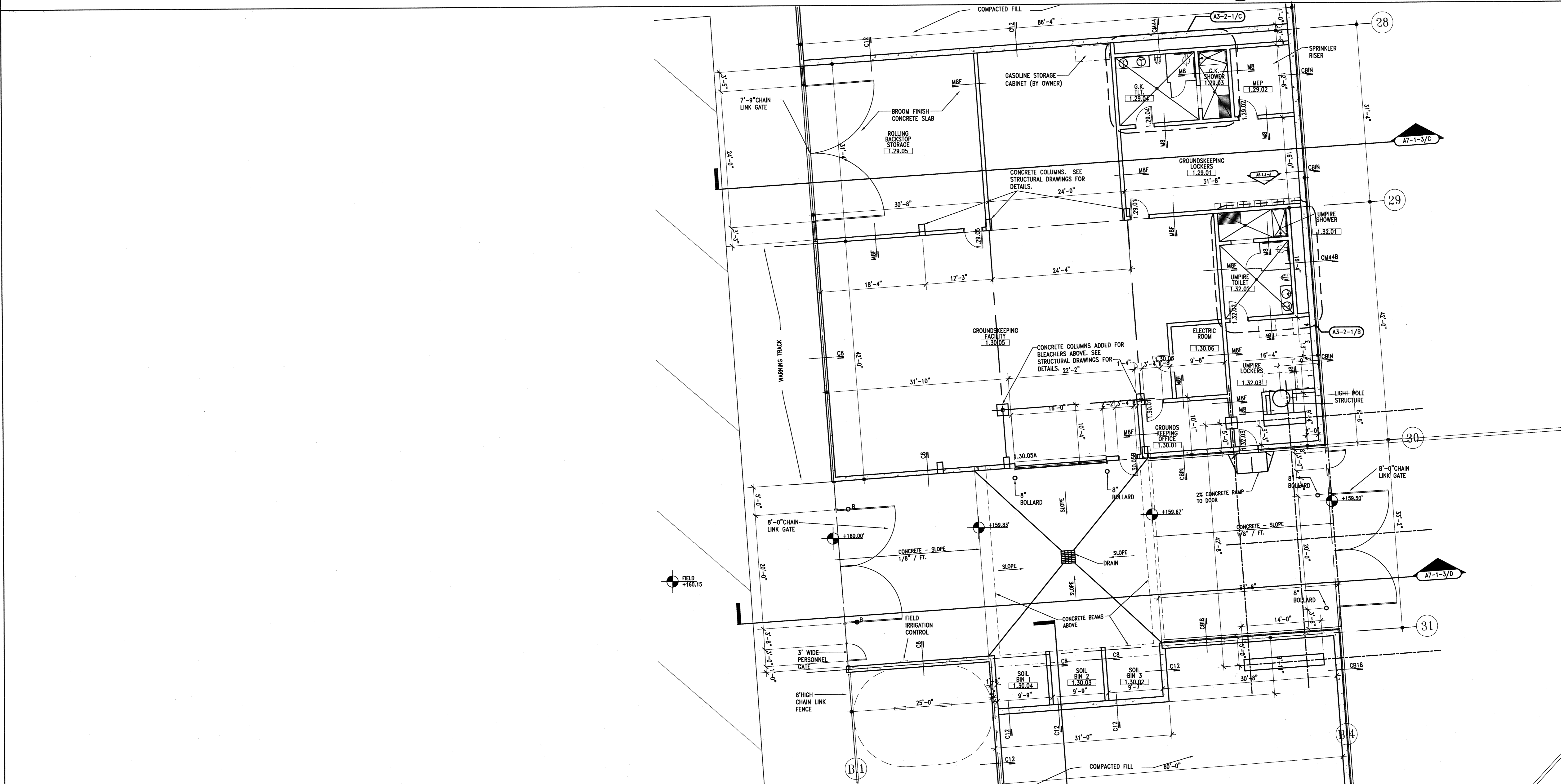
**MAIN CONCOURSE LEVEL
AREA 'E' PLAN**

PROJECT - CATEGORY - SUB-CATEGORY - SHEET
A2-2E VE

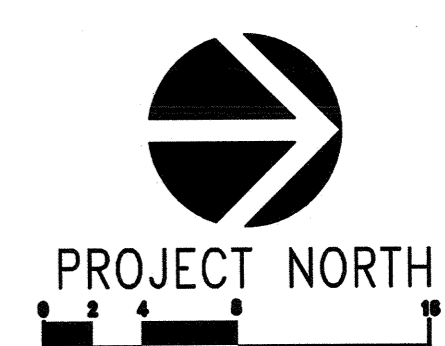
F:\Projects\04193\Drawings\VE Documents 121007\VE CHANGED FILES\AS BUILT\A2-1BD VE FIELD LEVEL AREA PLANS.dwg



B FIELD LEVEL AREA 'D' PLAN
1/8"=1'-0"



A FIELD LEVEL AREA 'B' PLAN
1/8"=1'-0"



CDA ARCHITECTS
1136 Washington Street, Suite 600
Columbia, South Carolina 29201
803-799-6502 (P)
803-799-2014 (F)

HOK
SPORT+VENUE+EVENT

HOK SPORTS FACILITIES GROUP, LLC
Architecture, Engineering, Planning,
Interiors, Facility Programming
300 Wyandotte, Suite 300
Kansas City, Missouri 64105

**Baseball Stadium
Stadium Construction Package**
State Project # H27-6004-MJC

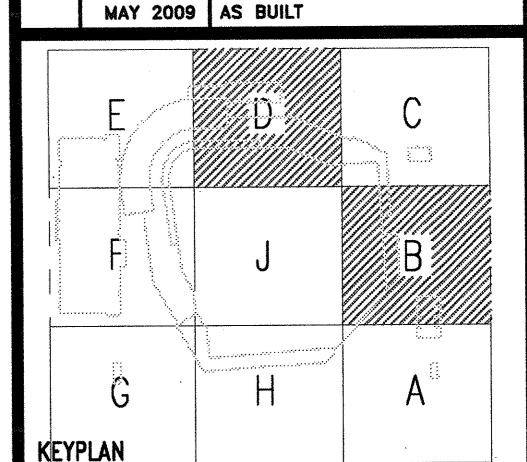
UNIVERSITY OF
SOUTH CAROLINA
Campus Planning & Construction
Columbia, South Carolina, 29208

CONSTRUCTION DOCUMENT
SUBMITTAL
May 14, 2007

PACKAGE

NO.	DATE	DESCRIPTION
10-04-07	ADDENDUM - 2	
JAN 2008	V.E. REVISIONS	
3-7-08	REVISED DETAIL B	
8-23-08	REVISED UMPIRE LOCKER ROOM	

10/17/09 *As Built*



PROJECT NO.
04-193

ISSUED BY:
CDA ARCHITECTS

DRAWN BY:

REVIEWED BY:

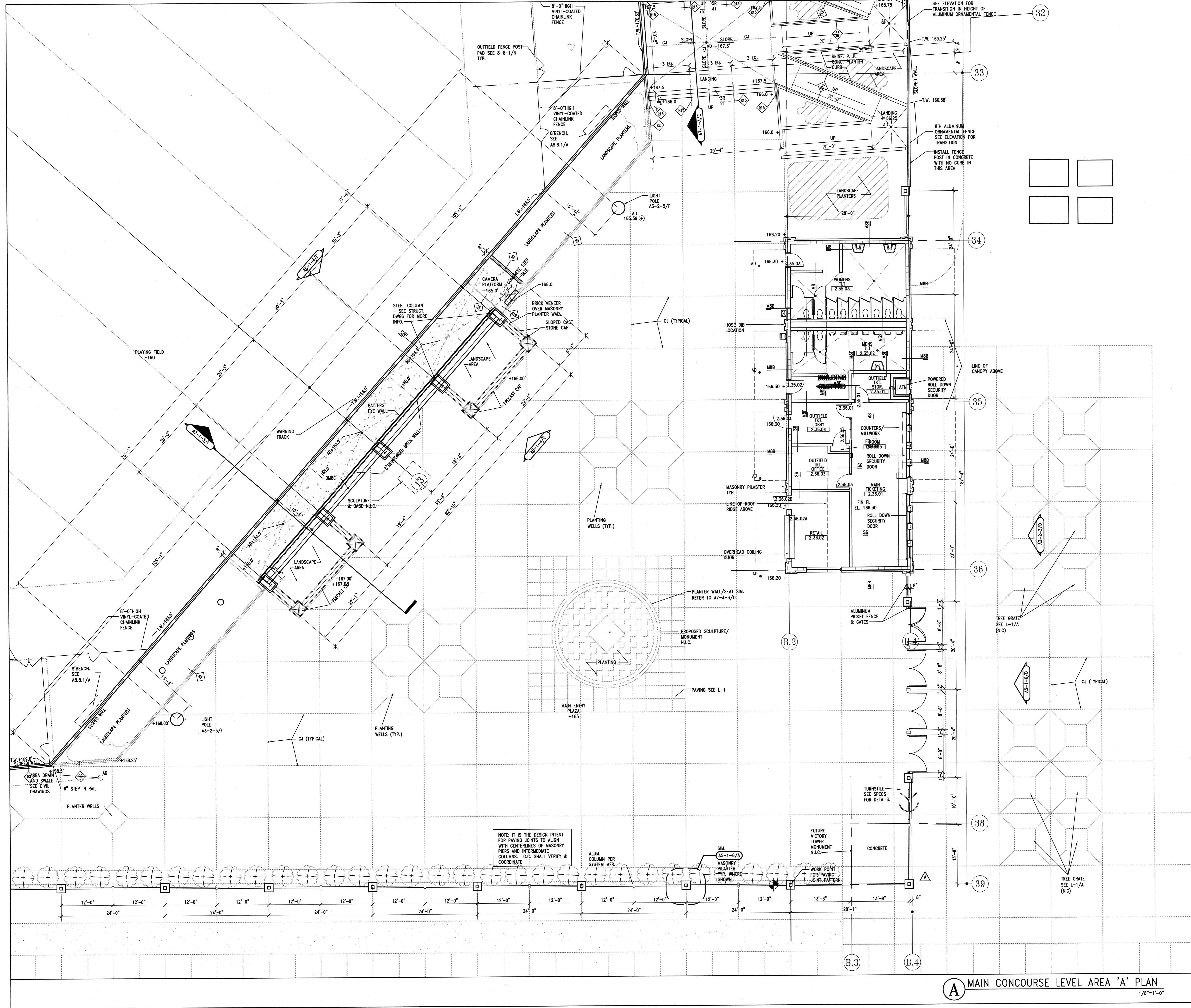
ISSUE DATE:

SHEET TITLE:

**FIELD LEVEL
AREA 'B' & 'D' PLANS**

DISCIPLINE - CATEGORY - SUB-CATEGORY - SHEET

A2-1BD VE



KEY NOTES

- 1 2" PVC DRAIN AT 48" O.C.
- 2 BAR JOIST (SEE STRUCTURAL)
- 3 RUN WATER PROOFING & PROTECTION BOARD ON INSIDE OF WALLS
- 4 GARDEN ROOF MATERIAL
- 5 EXTRUDED COPING AND WALL CAP
- 6 ROOF INSULATION
- 7 BATT INSULATION
- 8 METAL FURRING CHANNELS AT 16" O.C.
- 9 METAL SOFFIT PANELS ON 1/2" FURRING CHANNELS AT 16" O.C. & 4" RUNNER CHANNELS AT 24" O.C.
- 10 METAL FLASHING
- 11 4" METAL STUD WALL FRAMING AT 16" O.C.
- 12 STEEL BEAM - SEE STRUCTURAL
- 13 BOND BEAM
- 14 PRECAST CONCRETE CAP
- 15 PRECAST SILL
- 16 AREA DRAIN
- 17 SUSPENDED ACOUSTICAL CEILING TILE
- 18 METAL WIRE HANGERS BRACED TO STRUCTURE ABOVE
- 19 1/2" HAT CHANNELS AT 48" O.C. MAX.
- 20 THRU-WALL FLASHING
- 21 HEAD JOINT WEEP HOLE WITH FILLER
- 22 GROUT SOLID BELOW GRADE
- 23 BOWL DRAIN
- 24 ALUMINUM STOREFRONT DOOR
- 25 ALUMINUM STOREFRONT WINDOW
- 26 ROOF BASE FLASHING, 24" MAX.
- 27 MORTAR NET
- 28 REINFORCED CONCRETE FOOTING-SEE STRUCTURAL
- 29 SOLDIER BRICK
- 30 DOWNSPOUT
- 31 EXPANSION JOINT
- 32 STRUCTURAL STEEL-SEE STRUCTURAL
- 33 BRICK VENEER
- 34 8" CMU
- 35 GYPSUM BOARD CEILING
- 36 FLEXIBLE FLASHING
- 37 1/2" GYPSUM BOARD
- 38 WATER PROOFING W/PROTECTION BOARD AND DRAIN
- 39 24" METAL PANELS (HORIZONTAL)
- 40 HEADER BRICK COURSE
- 41 SHEET WATER PROOFING & PROTECTION COURSE
- 42 BUTYL WATERPROOFING AND MUD SLAB
- 43 WATER STOP
- 44 STRUCTURAL CONCRETE SLAB
- 45 BAR JOIST EXTENSION - SEE STRUCT. PAINT WHERE EXPOSED
- 46 STANDARD METAL ROOF DECK
- 47 BITUMINOUS DAMP PROOFING
- 48 COLUMN-SEE STRUCTURAL
- 49 SEALANT
- 50 TRELLIS
- 51 RAILING-SEE RAILING SCHEDULE
- 52 TREATED WOOD BLOCKING
- 53 EPDM
- 54 3/8" DENSOGLAS
- 55 ANCHOR BAR & SEALANT - IF OVER 2'-0" FROM ROOF TO PARAPET
- 56 FACTORY FINISH COUNTER FLASHING WITH CLETE ANCHOR
- 57 1/2" THICK X 2" WIDE ORNAMENTAL STEEL CIRCLE
- 58 PERLITE CRICKET
- 59 CONCRETE CRICKET
- 60 STEEL ANGLE

REVISIONS

NO.	DATE	DESCRIPTION
1	10-04-07	ADDENDUM - 2
2	JAN 2008	V.E. REVISIONS
3	7-14-08	REVISED RAIL

4/17/08 As Built

MAY 2009 AS BUILT

KEY PLAN

PROJECT NO. 04-193
ISSUED BY: CDA ARCHITECTS
DRAWN BY: [REDACTED]
REVIEWED BY: [REDACTED]
ISSUE DATE:
SHEET TITLE:

MAIN CONCOURSE LEVEL AREA 'A' PLAN

PROJECT NORTH

A2-2A VE

1/8"=1'-0"

Copyright CDA Architects, Inc. 2007