



U N I V E R S I T Y O F
SOUTH CAROLINA

AMENDMENT NO. 2

TO: ALL VENDORS
FROM: Lana Widener
SUBJECT: USC-IFB-2561-LW
East Quad Interior Painting
DATE: March 12, 2014

This Amendment No. 2 modifies the Invitation for Bid only in the manner and to the extent as stated herein.

ITEM ONE: **FINISH PLAN DRAWINGS:** BASEMENT, FIRST FLOOR THROUGH FIFTH FLOOR,
ATTACHED

ITEM TWO: **FINISH SCHEDULED,** ATTACHED

BIDDER SHALL ACKNOWLEDGE RECEIPT OF AMENDMENT NO. 2 IN THE SPACE PROVIDED BELOW AND RETURN IT **WITH THEIR BID RESPONSE**. FAILURE TO DO SO MAY SUBJECT BID TO REJECTION.

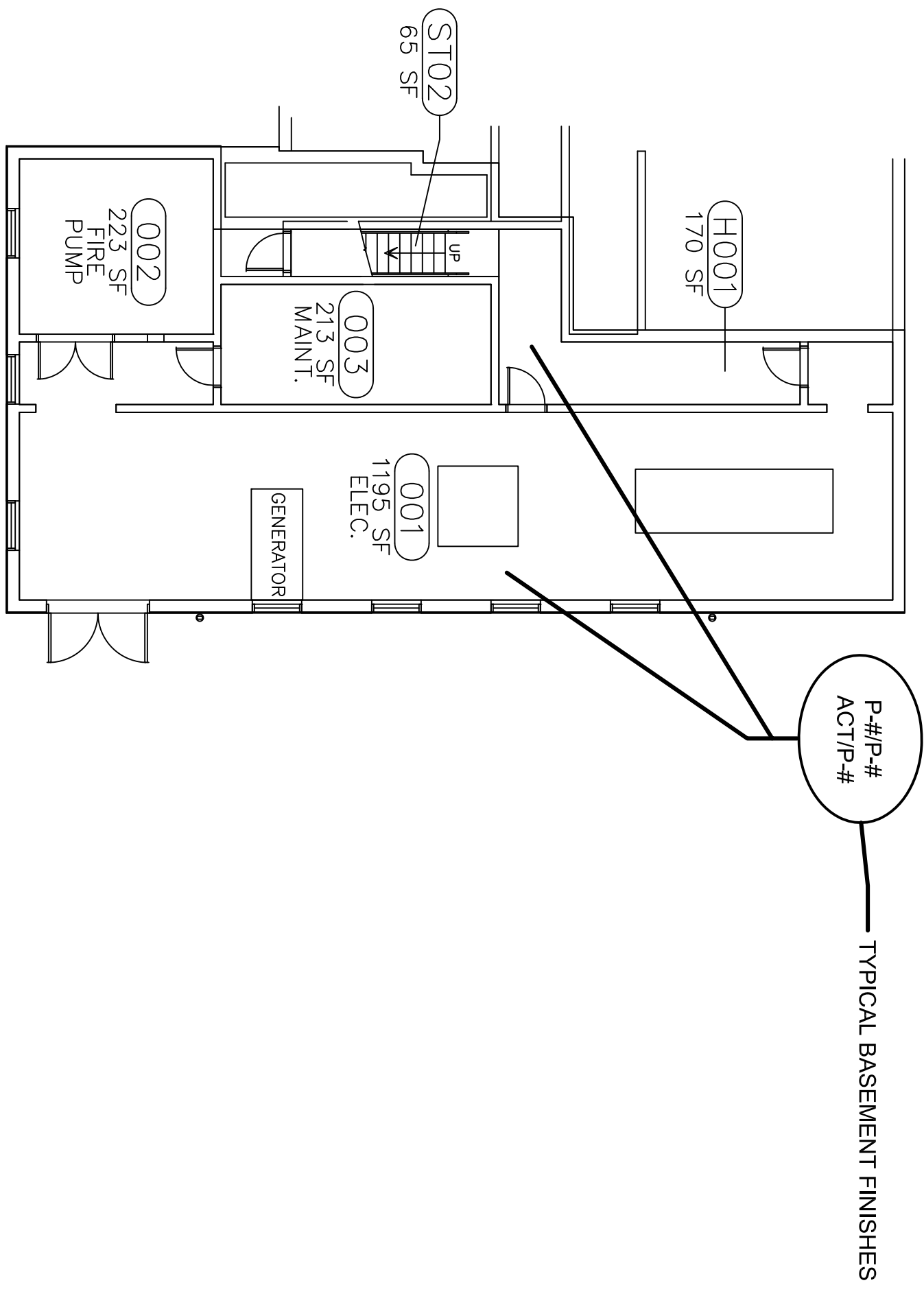
Authorized Signature

Firm

Date



BASEMENT FLOOR - FINISH PLAN



DATE: 3-11-14
ID2.0
BASEMENT
FINISH PLAN

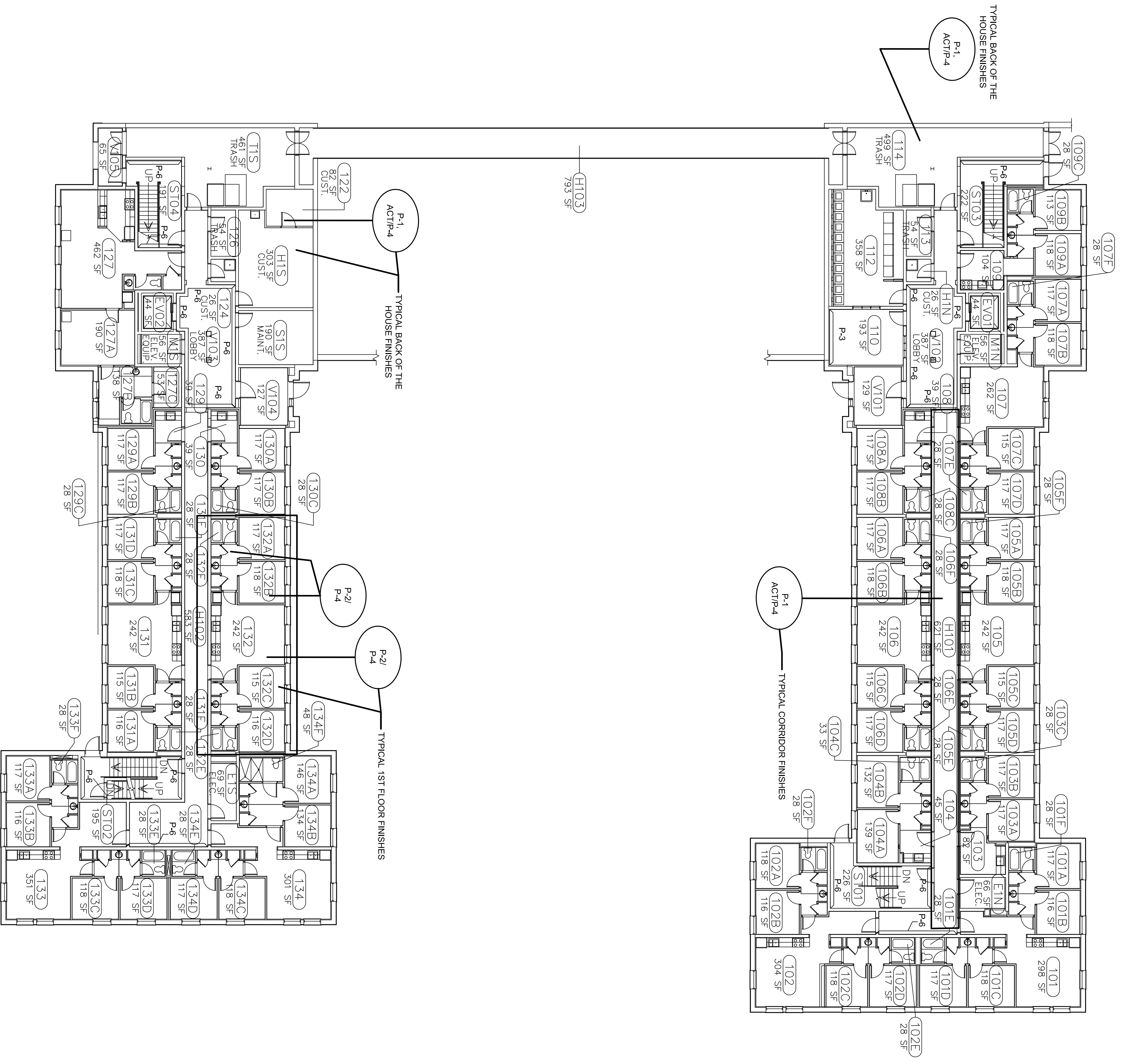
REVISIONS		
NO.	DATE	DESCRIPTION

PROJECT TITLE:
**EAST QUADRANGLE
BUILDING #: 135A**
DRAWN BY:

CONSTRUCTION & RENOVATIONS
UNIVERSITY HOUSING
1520 DEVINE STREET COLUMBIA, SC 29208



FIRST FLOOR - FINISH PLAN

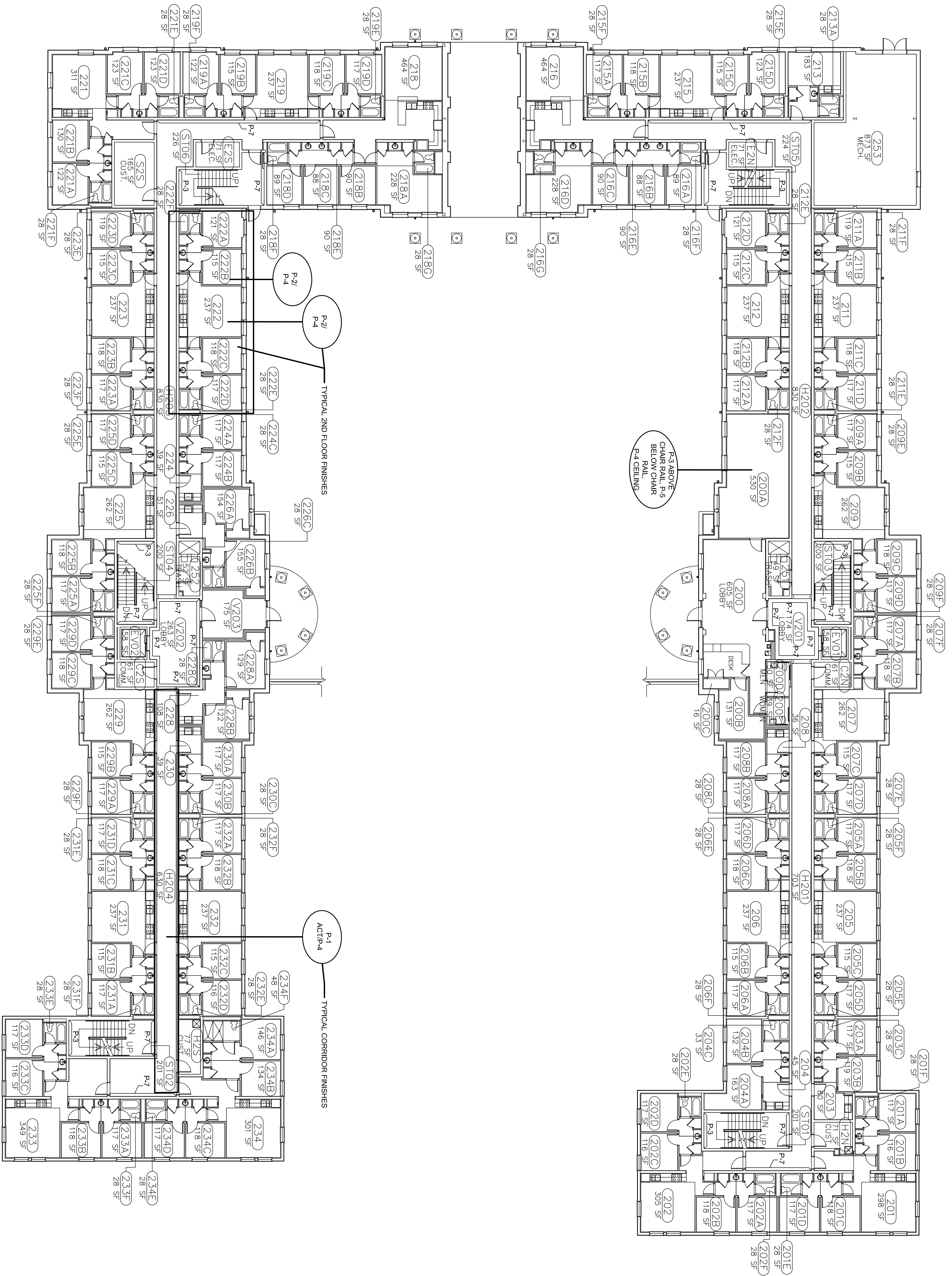


DATE: 3-11-14
ID2.1
 FIRST FLOOR FINISH PLAN

REVISIONS		
NO.	DATE	DESCRIPTION

PROJECT TITLE:
EAST QUADRANGLE BUILDING #: 135A
 DRAWN BY:

CONSTRUCTION & RENOVATIONS
 UNIVERSITY HOUSING
 1520 DEVINE STREET COLUMBIA, SC 29208



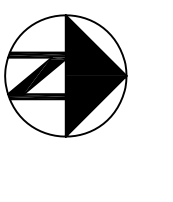
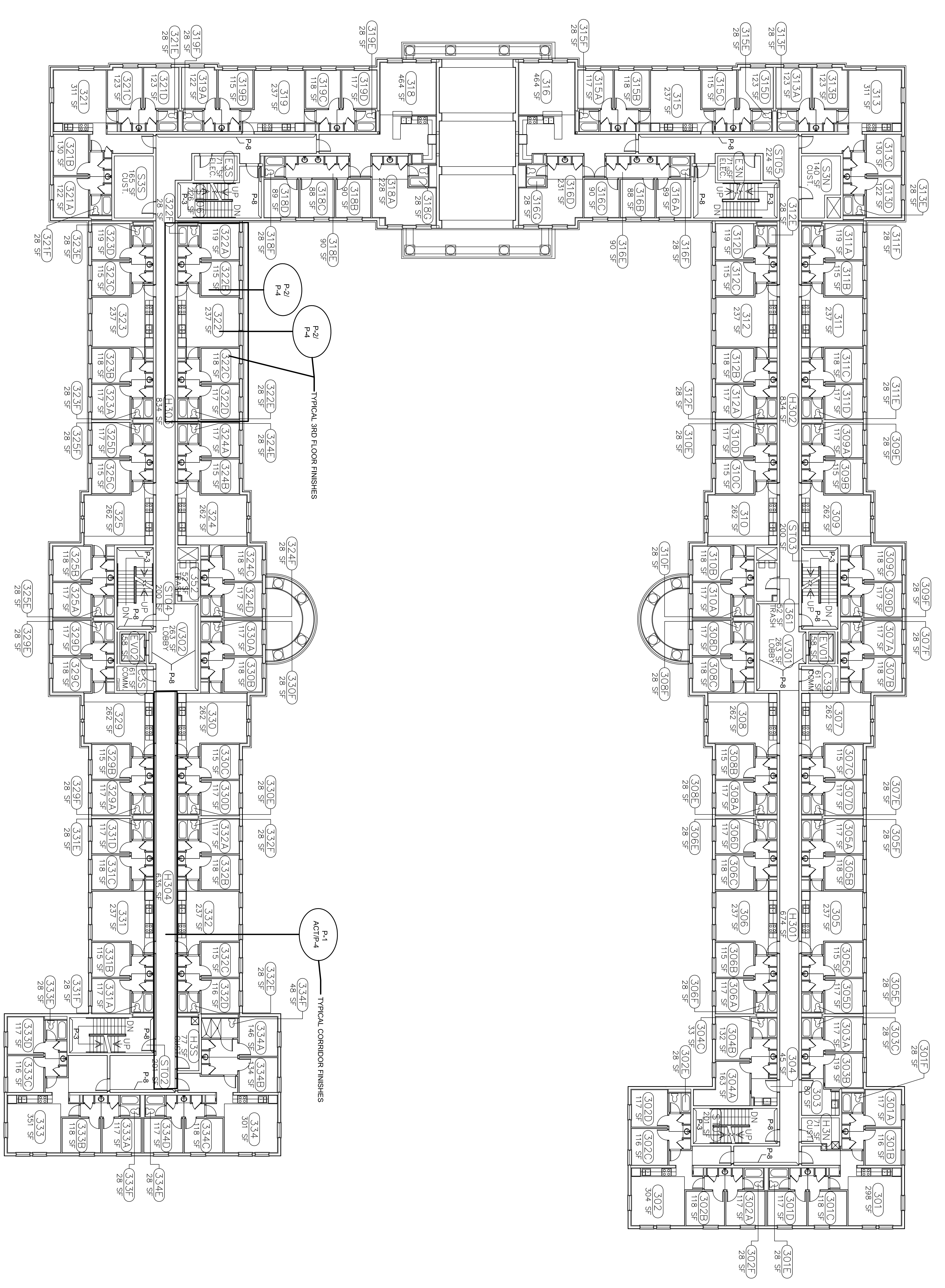
SECOND FLOOR - FINISH PLAN

DATE: 3-11-14
ID2.2
 SECOND FLOOR
 FINISH PLAN

REVISIONS		
NO.	DATE	DESCRIPTION

PROJECT TITLE:
**EAST QUADRANGLE
 BUILDING #: 135A**
 DRAWN BY:

CONSTRUCTION & RENOVATIONS
 UNIVERSITY HOUSING
 1520 DEVINE STREET COLUMBIA, SC 29208



THIRD FLOOR - FINISH PLAN

THIRD FLOOR
FINISH PLAN
ID2.3
DATE: 3-11-14

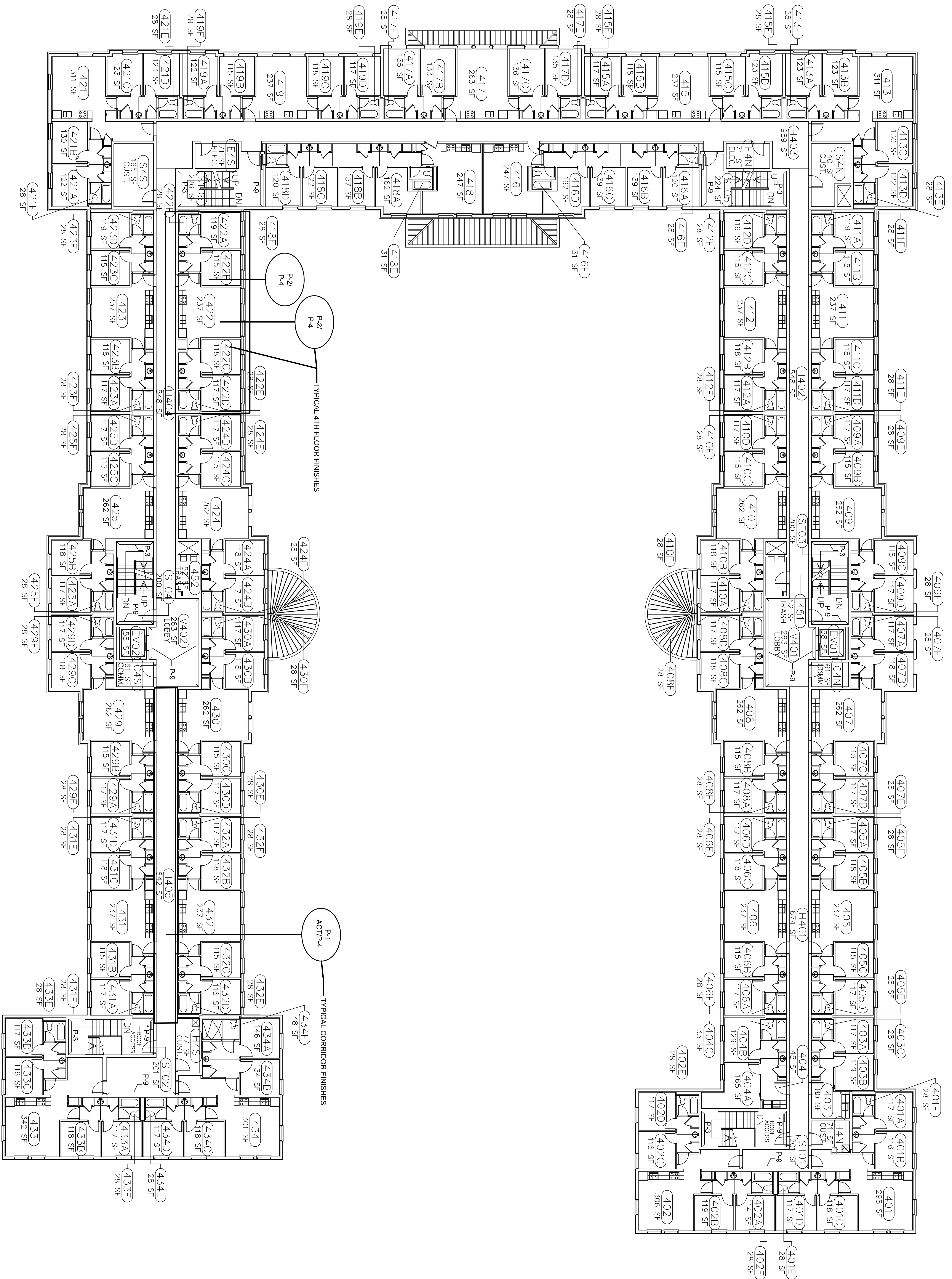
REVISIONS		
NO.	DATE	DESCRIPTION

PROJECT TITLE:
**EAST QUADRANGLE
BUILDING #: 135A**
DRAWN BY:

CONSTRUCTION & RENOVATIONS
UNIVERSITY HOUSING
1520 DEVINE STREET COLUMBIA, SC 29208



FOURTH FLOOR - FINISH PLAN



DATE: 3-11-14
ID2.4
 FOURTH FLOOR
 FINISH PLAN

REVISIONS		
NO.	DATE	DESCRIPTION

PROJECT TITLE:
**EAST QUADRANGLE
 BUILDING #: 135A**
 DRAWN BY:

CONSTRUCTION & RENOVATIONS
 UNIVERSITY HOUSING
 1520 DEVINE STREET COLUMBIA, SC 29208

EAST QUAD 135A		FINISH SCHEDULE	
CODE	SPECIFICATION		LOCATION
PAINT	NOTE: CONTRACTOR TO SUBMIT TWO DRAW DOWN SAMPLES OF EACH PAINT COLOR FOR APPROVAL PRIOR TO PURCHASING.		
NOTE	THESE COLORS ARE LISTED FOR COLOR MATCHING PURPOSES ONLY. DRAW DOWNS ARE TO BE IN THESE COLORS ALONG WITH THE SPECIFIED PAINT TYPE AS LISTED IN THE SPECIFICATIONS FOR THE PROJECT. PLEASE MARK EACH DRAW DOWN WITH PAINT NAME, CODE, TYPE & FINISH FOR EASE OF APPROVAL.		
P-1	SHERWIN WILLIAMS COLOR: SW7529 SAND BEACH FINISH: EG-SHEL		TYPICAL CORRIDORS, BACK OF HOUSE, OFFICES & PUBLIC SPACES
P-2	SHERWIN WILLIAMS COLOR: SW7555 PATIENCE FINISH: EG-SHEL		APARTMENT LIVING/DINING BEDROOMS & BATHROOMS
P-3	SHERWIN WILLIAMS COLOR: SW7046 ANONYMOUS FINISH: EG-SHEL		CLASSROOM 200A ABOVE CHAIR RAIL, STAIR ACCENT & ACCENT WALL IN 110
P-4	SHERWIN WILLIAMS COLOR: SW7002 DOWNY FINISH: EG-SHEL		TYPICAL CEILING
P-5	SHERWIN WILLIAMS COLOR: SW7002 DOWNY FINISH: SEMI-GLOSS		TYPICAL DOOR AND TRIM, BELOW CHAIR RAIL IN CLASSROOM 200A
P-6	SHERWIN WILLIAMS COLOR: SW6307 FINE WINE FINISH: EG-SHEL		RM 110 ACCENT WALL, 1ST FLOOR CORRIDOR & STAIR ACCENT
P-7	SHERWIN WILLIAMS COLOR: SW6460 KALE GREEN FINISH: EG-SHELL		2ND FLOOR CORRIDOR & STAIR ACCENT
P-8	SHERWIN WILLIAMS COLOR: SW7607 SANTORINI FINISH: EG-SHELL		3RD FLOOR CORRIDOR & STAIR ACCENT
P-9	SHERWIN WILLIAMS COLOR: SW7701 CAVERN CLAY FINISH: EG-SHEL		4TH FLOOR CORRIDOR & STAIR ACCENT
P-10	SHERWIN WILLIAMS COLOR: SW6388 GOLDEN FLEECE FINISH: EG-SHEL		5TH FLOOR CORRIDOR & STAIR ACCENT
P-11	SHERWIN WILLIAMS COLOR: SW7069 IRON ORE FINISH: SEMI-GLOSS		STAIR HANDRAILS