



U N I V E R S I T Y O F  
**SOUTH CAROLINA**

AMENDMENT NO.1 TO SOLICITATION

TO: ALL VENDORS  
FROM: Kevin Sanders, Procurement Manager  
SUBJECT: SUBJECT: SOLICITATION NUMBER: USC-IFB-2264-KS  
Generator and Transfer Switch

DATE: June 26<sup>th</sup>, 2012

---

This Amendment **No.1** modifies the Invitation for Bid only in the manner and to the extent as stated herein.

Drawings attached

---

BIDDER SHALL ACKNOWLEDGE RECEIPT OF AMENDMENT **NO. 1** IN THE SPACE PROVIDED BELOW AND RETURN IT WITH THEIR BID RESPONSE. FAILURE TO DO SO MAY SUBJECT BID TO REJECTION.

---

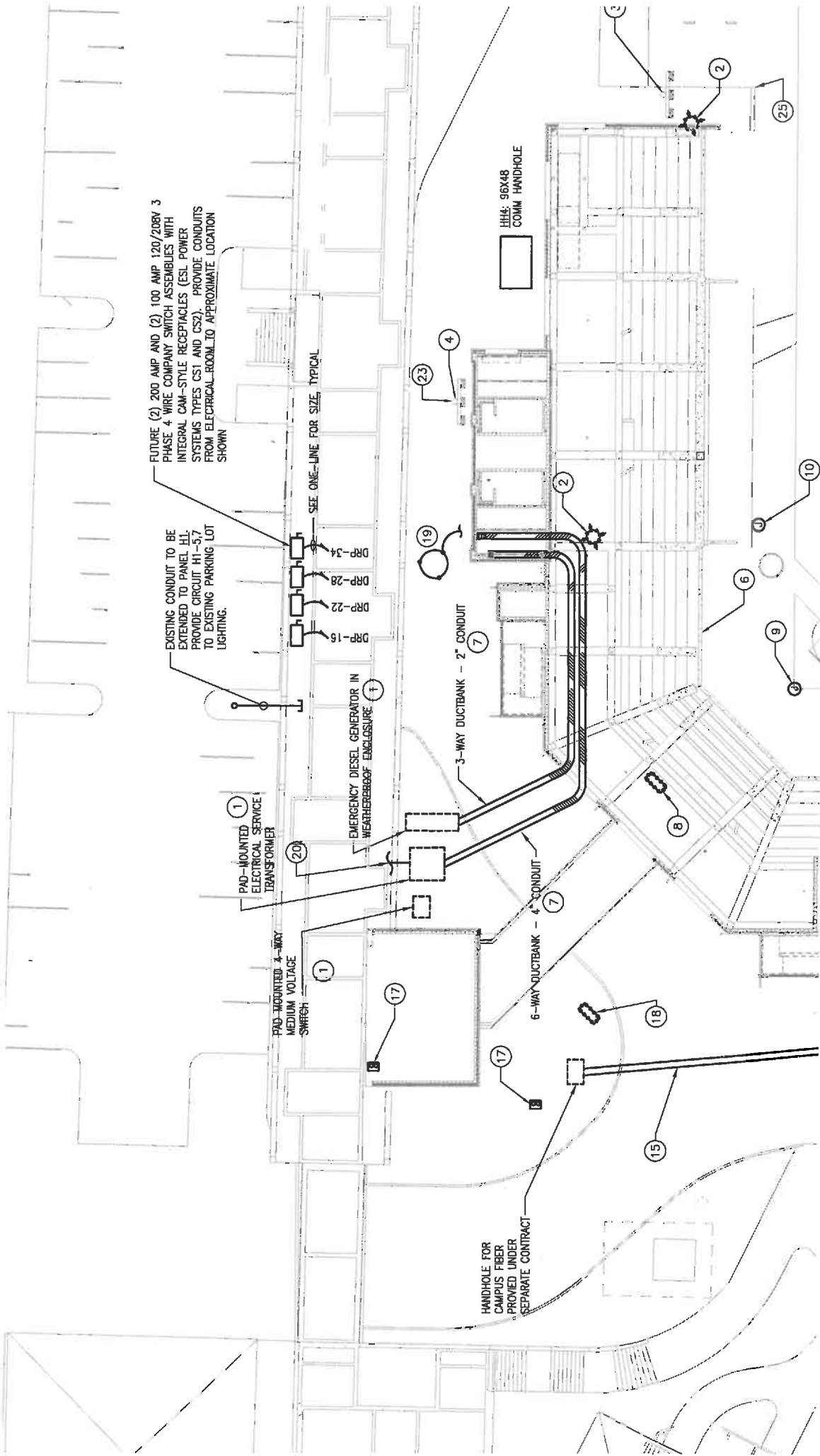
Authorized Signature

---

Name of Offeror

---

Date



FUTURE (2) 200 AMP AND (2) 100 AMP 120/208V 3 PHASE 4 WIRE COMPANY SWITCH ASSEMBLIES WITH INTEGRAL CAM-STYLE RECEPTACLES (ESL POWER SYSTEMS TYPES CST AND CSZ). PROVIDE CONDUITS FROM ELECTRICAL ROOM TO APPROXIMATE LOCATION SHOWN

EXISTING CONDUIT TO BE EXTENDED TO PANEL HL. PROVIDE CIRCUIT HI-5,7 TO EXISTING PARKING LOT LIGHTING.

SEE ONE-LINE FOR SIZE, TYPICAL

PAD-MOUNTED ELECTRICAL SERVICE TRANSFORMER

PAD-MOUNTED 4-WAY MEDIUM VOLTAGE SWITCH

EMERGENCY DIESEL GENERATOR IN WEATHERPROOF ENCLOSURE

HANDHOLE FOR CAMPUS FIBER PROVIDED UNDER SEPARATE CONTRACT

HLH: 96X48 COMM HANDHOLE

DRP-34  
DRP-28  
DRP-22  
DRP-15

3-WAY DUCTBANK - 2" CONDUIT

6-WAY DUCTBANK - 4" CONDUIT

15

18

17

17

1

1

19

23

4

2

6

9

8

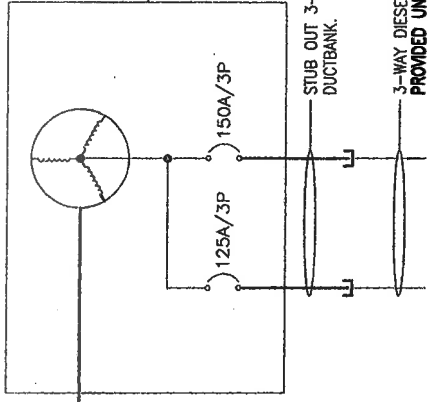
10

25

2



175KW, 480/277V, 3 $\phi$   
EMERGENCY DIESEL GENERATOR



DRIVEN GROUND ROD PER  
SPECIFICATIONS

GENERATOR TO BE PROVIDED AND DELIVERED BY USC  
TO THE PREPARED PAD. COORDINATE DELIVERY  
WITH USC.

STUB OUT 3-WAY DIESEL POWER  
DUCTBANK.

3-WAY DIESEL POWER DUCTBANK  
PROVIDED UNDER SEPARATE  
CONTRACT.