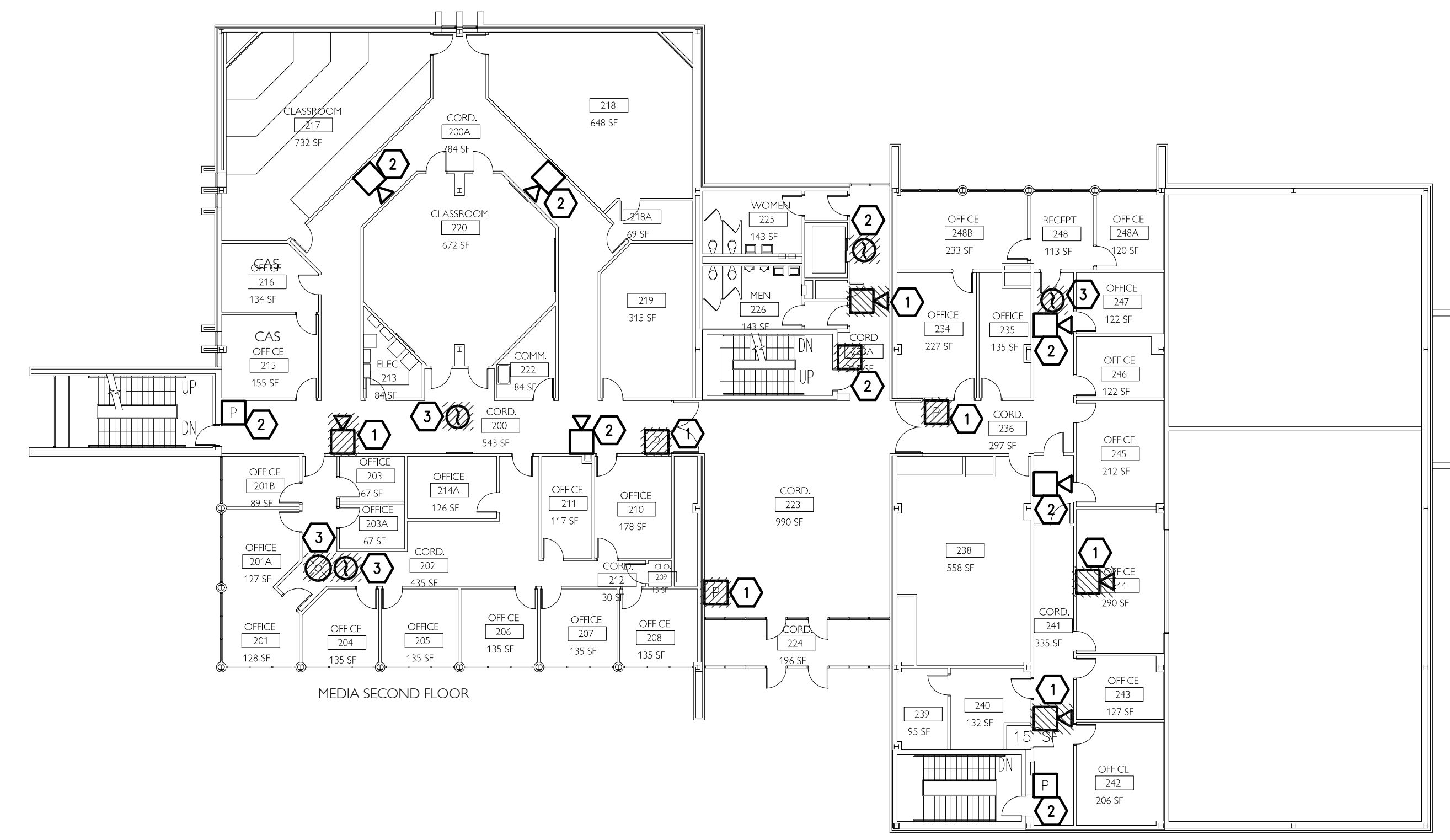
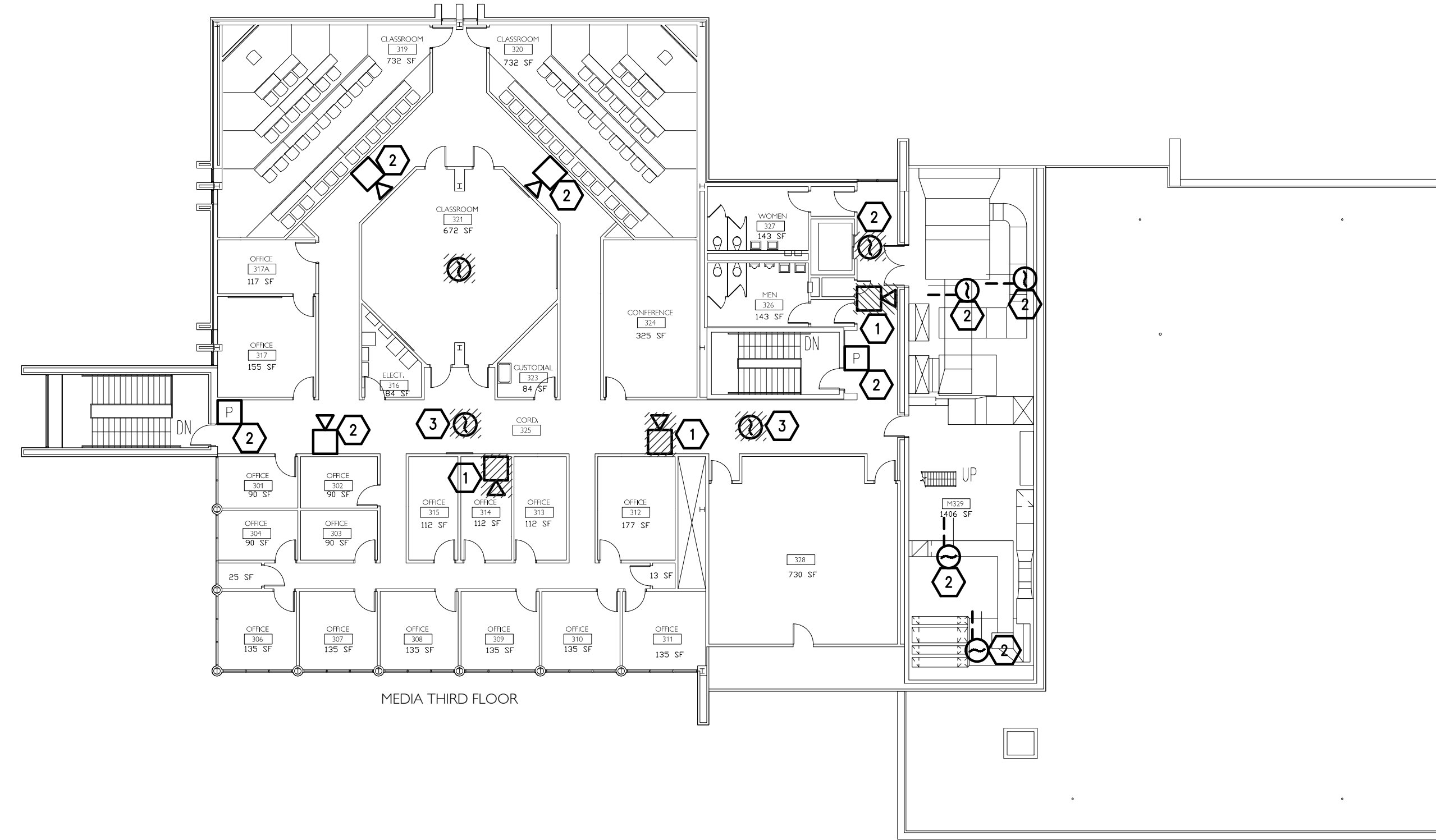


D ELECTRICAL DEMOLITION PLAN – PENTHOUSE
 E2.1 SCALE: 1/16" = 1'-0"
 PROJECT NORTH

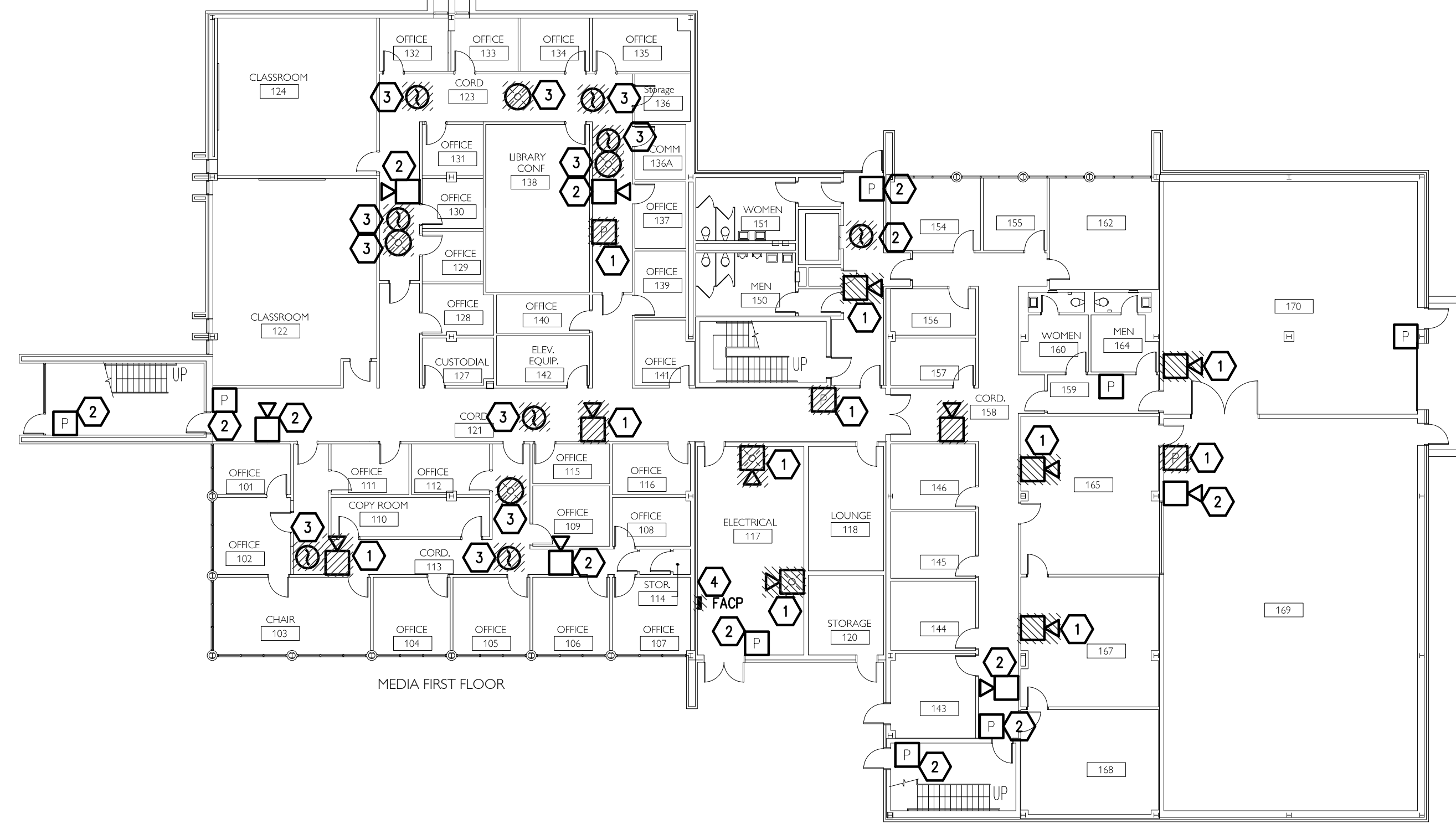


B ELECTRICAL DEMOLITION PLAN – 2ND FLOOR
 E2.1 SCALE: 1/16" = 1'-0"
 PROJECT NORTH

- DEMOLITION NOTES:**
- 1 DEMOLISH EXISTING DEVICE AND INSTALL BLANK COVER. PAINT BLANK COVER TO MATCH EXISTING WALL. JUNCTION BOX TO BE USED AS A PULL POINT FOR DEVICES CONNECTED DOWN STREAM, ON THE SAME CONDUIT RUN AS REQUIRED.
 - 2 DEMOLISH EXISTING DEVICE AND INSTALL NEW DEVICE AT EXISTING LOCATION.
 - 3 DEMOLISH EXISTING CEILING MOUNTED DEVICE AND REPLACE EXISTING CEILING TILE WITH MATCHING TILE.
 - 4 DEMOLISH EXISTING FIRE ALARM CONTROL PANEL AND PREPARE SPACE FOR NEW FIRE ALARM CONTROL PANEL.



C ELECTRICAL DEMOLITION PLAN – 3RD FLOOR
 E2.1 SCALE: 1/16" = 1'-0"
 PROJECT NORTH



A ELECTRICAL DEMOLITION PLAN – 1ST FLOOR
 E2.1 SCALE: 1/16" = 1'-0"
 PROJECT NORTH

**BURDETTE
 ENGINEERING**
 102 PILGRIM ROAD
 GREENVILLE, SC 29607
 (864) 297-8717 TEL
 (864) 297-8719 FAX

REVISION	DATE	BY
A	1/4/13	JDV
B	2/8/13	JDV

UNIVERSITY OF SC UPSTATE
 MEDIA BUILDING
 FIRE ALARM REPLACEMENT
 SC PROJECT NO. H24-157
 SPARTANBURG, SOUTH CAROLINA