

This drawing is the property of Peritus Engineers & Associates, Inc. and shall not be used or reproduced without their written permission. © 2014 PERITUS ENGINEERS & ASSOCIATES, INC.

# USC UPSTATE REPLACE SMITH EXHAUST FANS SC STATE PROJECT #H34-9544-JM-A

## UNIVERSITY OF SOUTH CAROLINA UPSTATE

Spartanburg, South Carolina

### DESIGN TEAM

#### OWNER

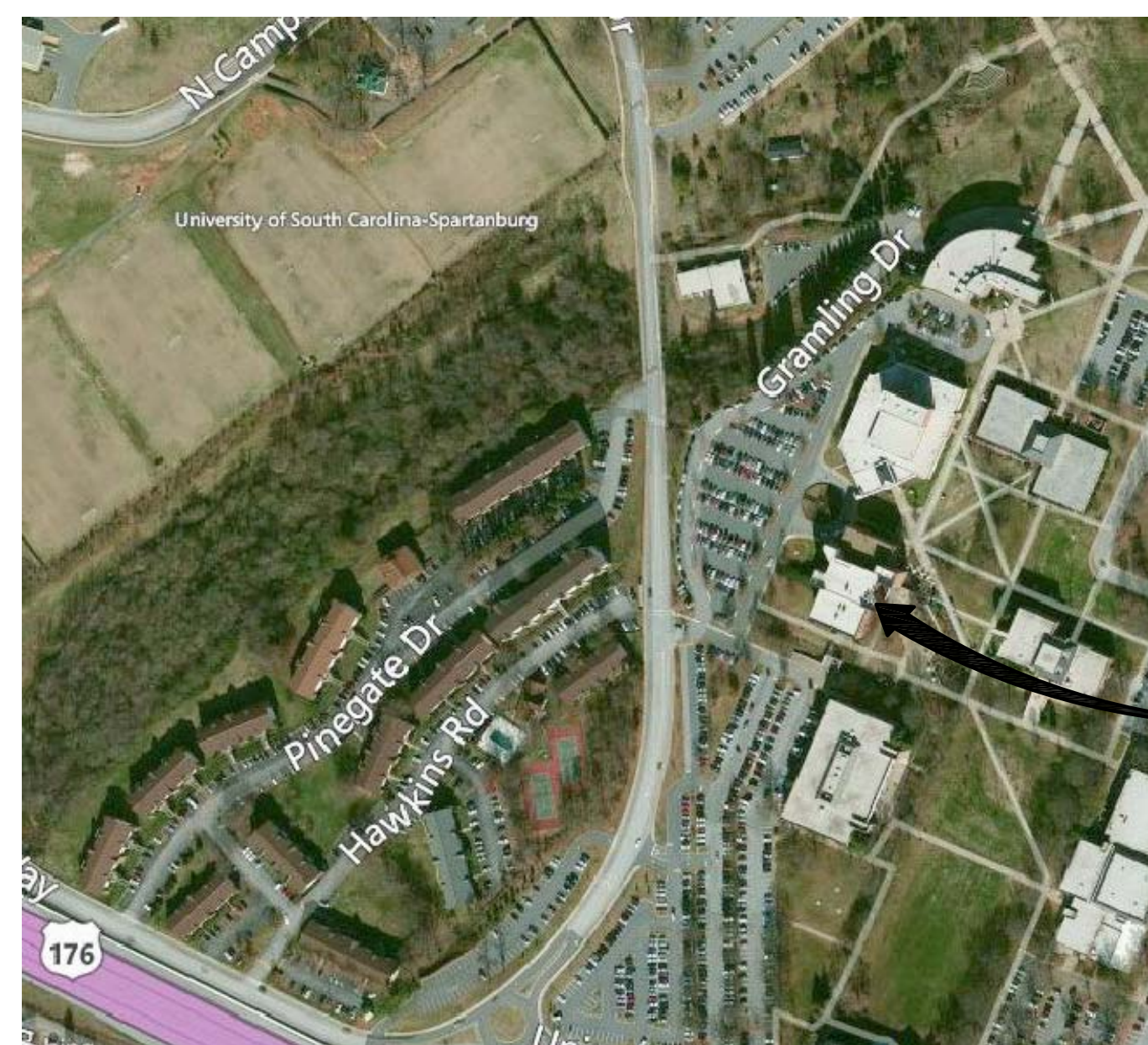
UNIVERSITY OF SOUTH CAROLINA UPSTATE  
800 UNIVERSITY WAY  
SPARTANBURG, SC 29303 (864) 503-5538

#### MECHANICAL ENGINEER

PERITUS ENGINEERS & ASSOCIATES, INC.  
10 E. DORCHESTER BLVD.  
GREENVILLE, SC 29605 (864) 277-8287  
JODY C. PARKER, P.E.

### INDEX OF DRAWINGS

DWG. #	SHEET TITLE
T-1	PROJECT TITLE SHEET
<b>MECHANICAL DRAWINGS</b>	
M-1	HVAC PLANS & SCHEDULES



**SMITH BUILDING**  
LAB EXHAUST FAN REPLACEMENT  
(HIGH ROOF LEVEL)

VICINITY MAP

NO.	DATE	BY	DESCRIPTION
0	4-18-14	JCP	ISSUE FOR BID

--	--

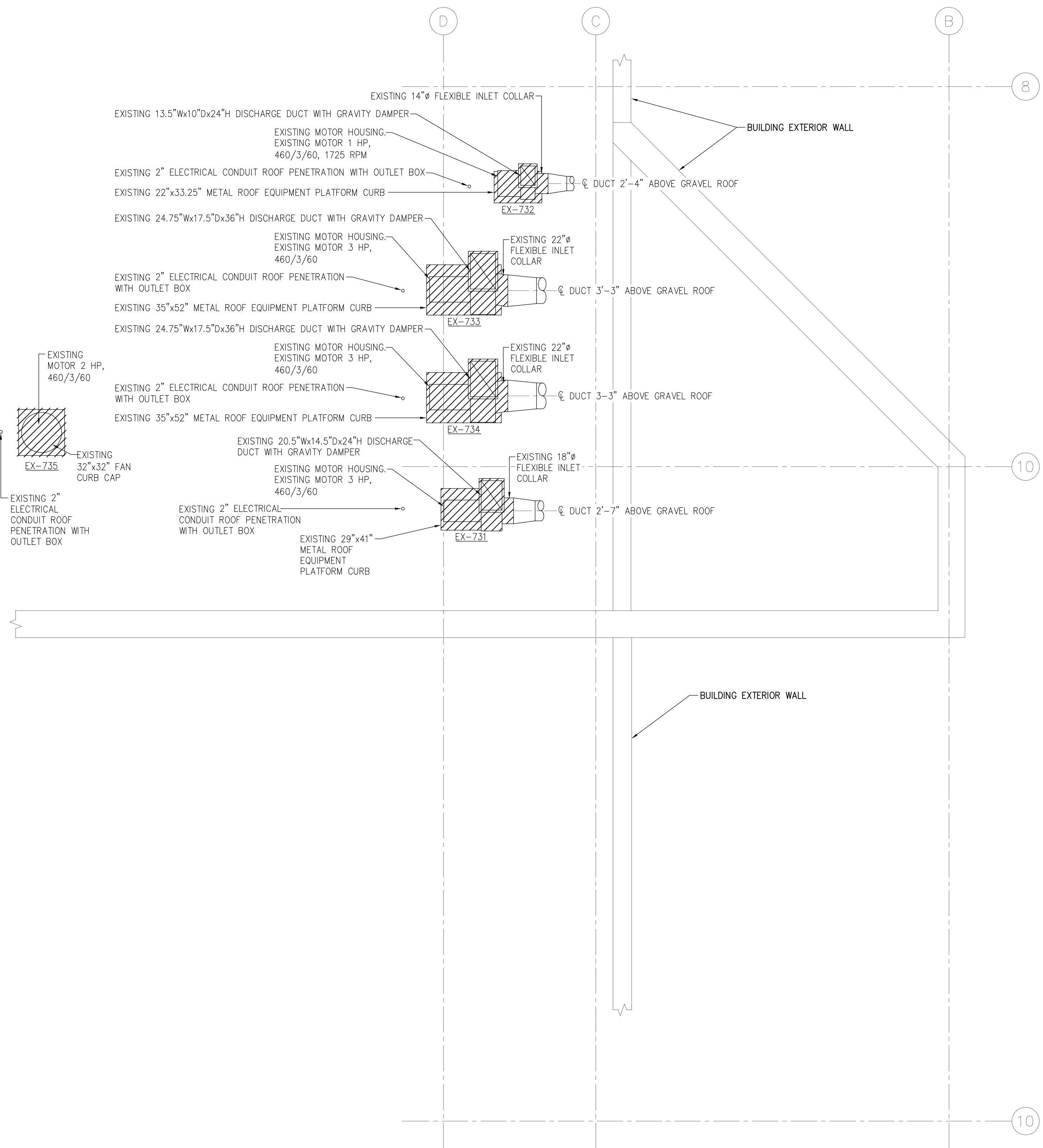


USC UPSTATE  
REPLACE SMITH EXHAUST FANS  
SC STATE PROJECT #H34-9544  
SPARTANBURG, SOUTH CAROLINA

DESIGN JCP	DRAWN TMI
CHECKED JCP	
DATE 3/13/14	
JOB NO. PERITUS #140205	
SHEET T-1	
1 OF 1 SHEETS	



This drawing is the property of Peritus Engineers & Associates, Inc. and shall not be used or reproduced without their written permission. © 2014 PERITUS ENGINEERS & ASSOCIATES, INC.



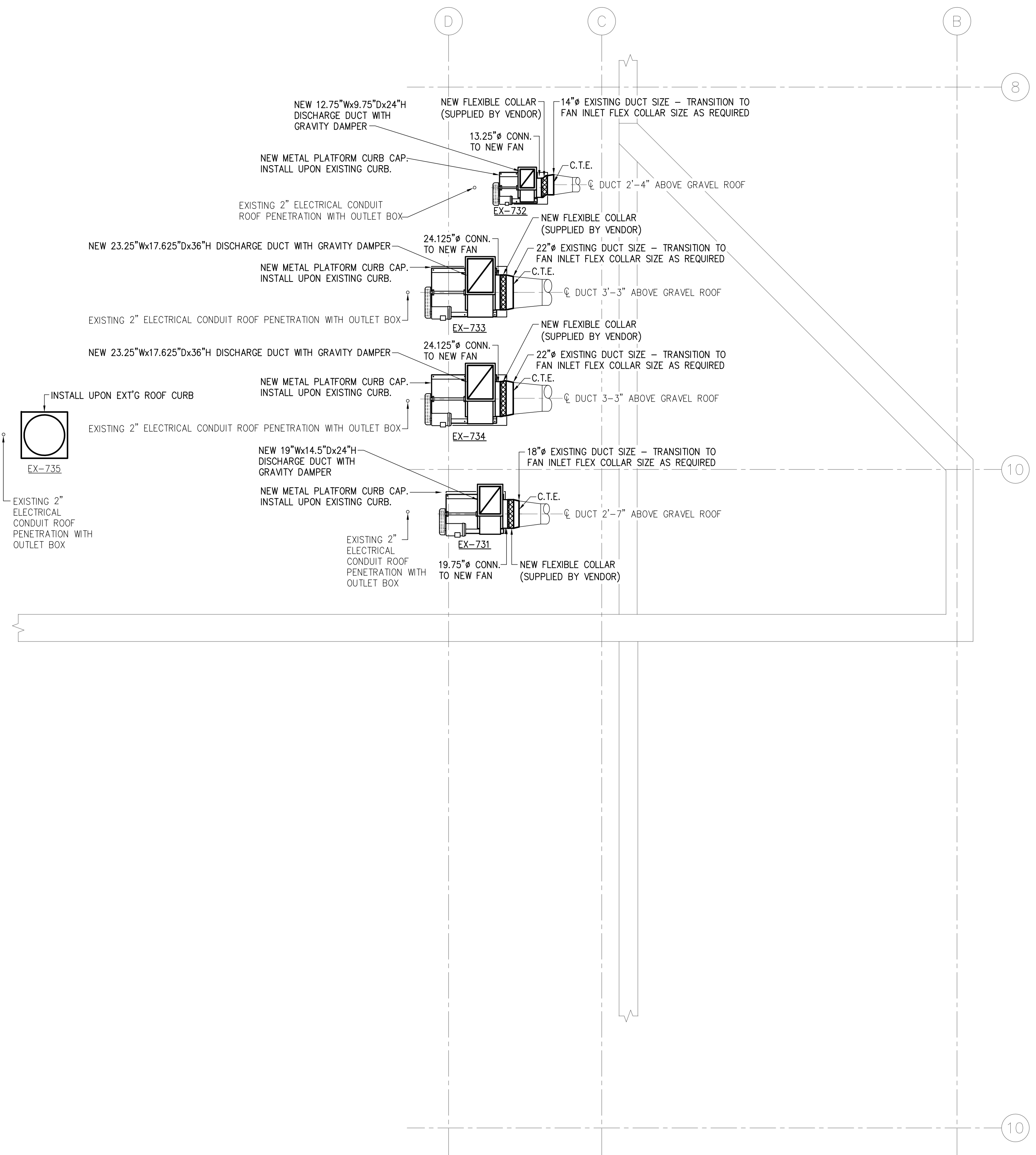
**PARTIAL HVAC ROOF  
DEMOLITION PLAN**

SCALE: 1/4" = 1'-0"

////// HATCHED AREA INDICATES ITEMS TO BE REMOVED

**DEMOLITION WORK NOTES:**

1. REMOVE EXISTING UTILITY PVC EXHAUST FANS LOCATED ABOVE ROOF. EQUIPMENT TAGS EX-731, EX-732, EX-733, EX-734 & EX-735 "AIR PLASTICS" MODEL P BLOWERS. DISCONNECT EX-731, EX-732, EX-733, EX-734 & EX-735 FROM EXISTING EXHAUST DUCTWORK LOCATED ABOVE ROOF, AND DISCONNECT ELECTRICAL POWER.
2. CONTRACTOR SHALL REMOVE AND DISPOSE OF EXISTING UTILITY FANS.



**PARTIAL HVAC ROOF  
NEW CONSTRUCTION PLAN**

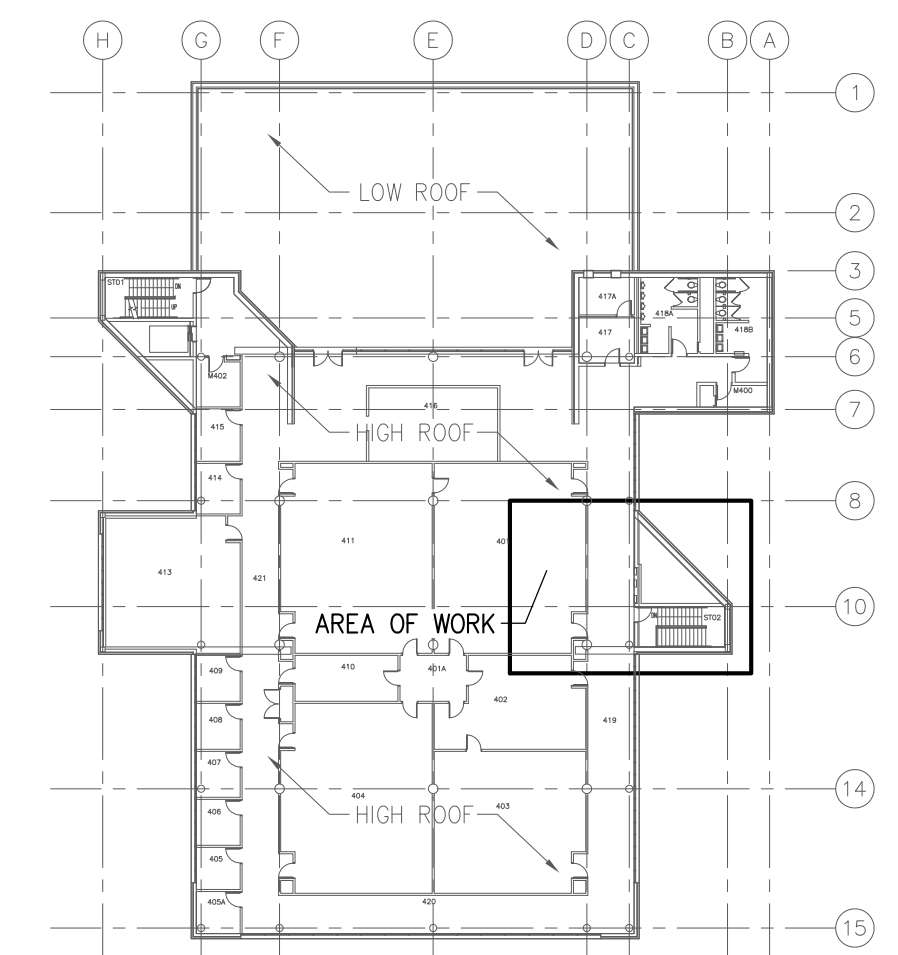
SCALE: 1/4" = 1'-0"

ALL NEW CONSTRUCTION SHOWN IN **BOLD**  
C.T.E. - CONNECT TO EXISTING

LAB EXHAUST FAN SCHEDULE										
UNIT NO.	KCH MODEL NO.	TYPE DRIVE	C.F.M.	R.P.M.	S.P. INCHES	BRAKE H.P.	MOTOR H.P.	VOLTAGE	TYPE	REMARKS
EX-731	NH-18.25	BELT	3520	1832	3	3.0	5	460/3/60	PVC, ROOF MTD	SEE NOTES #1-#8
EX-732	NH-12.25	BELT	1280	2416	2.5	0.92	2	460/3/60	PVC, ROOF MTD	SEE NOTES #1-#8
EX-733	NH-22.25	BELT	5760	1396	1.75	3.49	5	460/3/60	PVC, ROOF MTD	SEE NOTES #1-#8
EX-734	NH-22.25	BELT	5760	1396	1.75	3.49	5	460/3/60	PVC, ROOF MTD	SEE NOTES #1-#8
EX-735	RE 18.25	BELT	3250	1583	2	1.9	2	460/3/60	PVC, ROOF MTD	SEE NOTE #9

**NOTES:**

1. UTILITY TYPE FAN WITH FAN HOUSING CONSTRUCTED OF TYPE II, GRADE I, HIGH IMPACT PVC.
2. FAN INLET CONE WITH FLEXIBLE COUPLING.
3. BACKWARD INCLINED(BI) FAN WHEEL, NON-OVERLOADING, OF STEEL CONSTRUCTION WITH FRP COATING.
4. FAN SHAFT BEARINGS LOCATED OUT OF AIR STREAM.
5. TEFC MOTOR.
6. OSHA BELT GUARD AND WEATHER COVER.
7. FORMED STEEL BASE PLATE AND ANGLES, PROVIDED WITH INDUSTRIAL GRADE ENAMEL PAINT COATING.
8. UPBLAST FAN DISCHARGE WITH 2 FT. LONG STAINLESS STEEL FULL SIZE DISCHARGE DUCT WITH GRAVITY DAMPERS.
9. UPBLAST ROOF EXHAUSTER WITH CURB CAP BASE AND CORROSION RESISTANT FRP COATED STEEL FAN WHEEL. FAN HOUSING CONSTRUCTED OF HIGH IMPACT PVC. 360° DEGREE AIR DISCHARGE. INSTALL UPON EXISTING ROOF CURB.



**KEY PLAN**  
NO SCALE

**USC UPSTATE**  
**REPLACE SMITH EXHAUST FANS**  
**SC STATE PROJECT #H34-9544-JM-A**  
**SPARTANBURG, SOUTH CAROLINA**

DESIGN JCP	DRAWN TMI	CHECKED JCP	DATE 3/13/14	JOB NO. PERITUS #140205	SHEET M-1	ISSUE FOR BID	BY	DATE	DESCRIPTION
						0	4-18-14		REVISIONS