



JUMPER CARTER SEASE/ARCHITECTS, P.A.
JCSarchitects.com / 412 Meeting Street, West Columbia, SC 29169
P (803) 791-1020 / F (803) 791-1022

1600 HAMPTON ANNEX – DEFERRED MAINTENANCE

PROJECT NO: H27-6107
USC PROJECT NO: CP00394873
JCS PROJECT NO: 12113

ADDENDUM 03
March 7, 2014

GENERAL:

1. Revise bid closing date, as listed on the SE-310 Request for Advertisement, to 3/13/2014 at 2:00 pm.
2. See Mechanical Design Inc. Addendum No. 3 included in this addendum for plumbing revisions.
3. See Sims Group Addendum No. 3 included in this addendum for electrical revisions.

END OF ADDENDUM



4403 Broad River Road
Columbia, S.C. 29210
Phone: 731-9834
Fax: 731-9837

ADDENDUM NO. 3

To: **Jumper, Carter, Sease, Architects**

Attn: Darryn Bouknight, AIA

Date: March 07, 2014

Project: **1600 Hampton Steet - Deferred Maintenance**
University of South Carolina

MDI Comm. No. 122998

To All Bidders:

Please include the following items in your bid for this project:

ITEMS PERTAINING TO PLUMBING SPECIFICATIONS

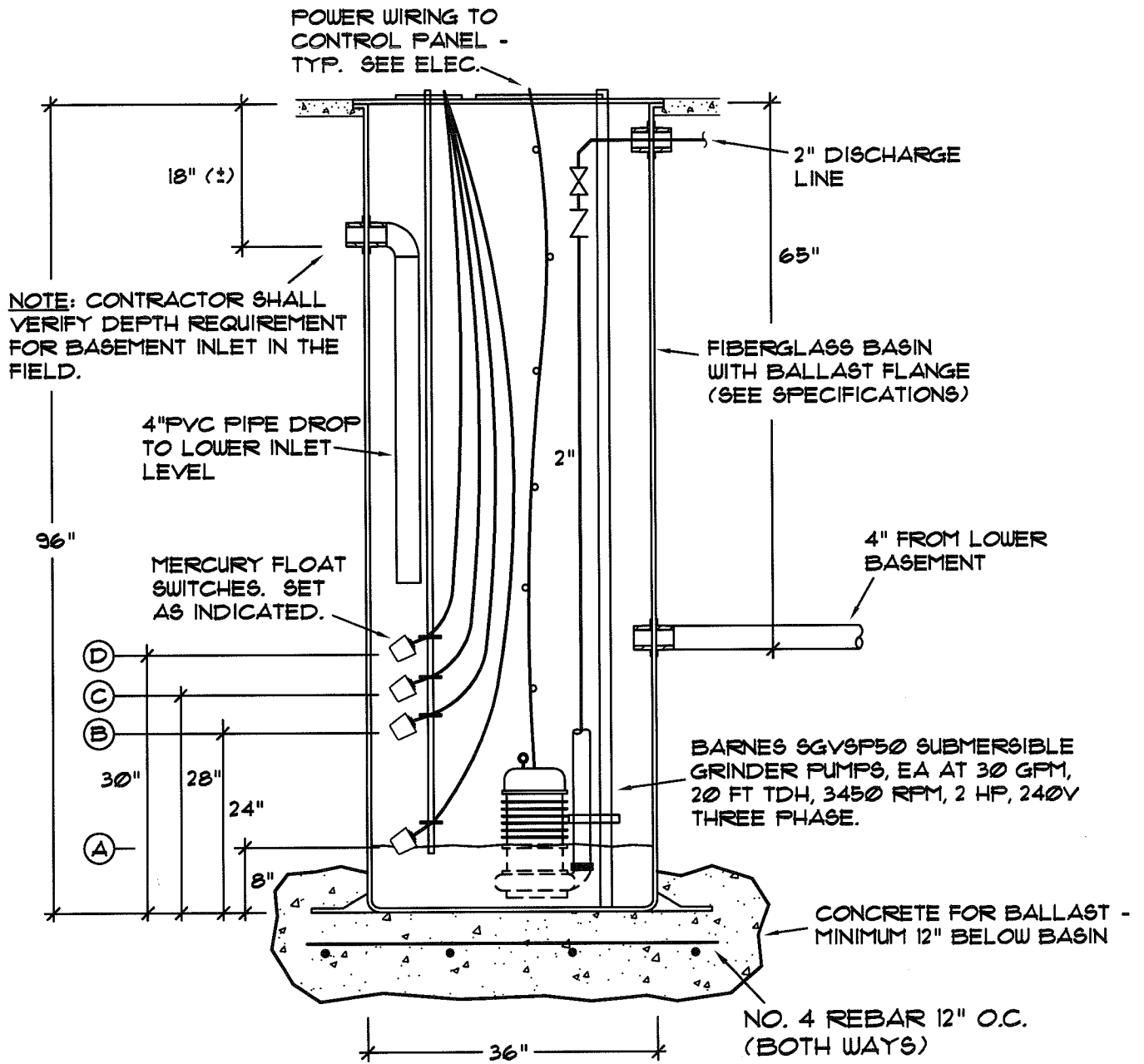
1. Section 22 05 00 para. 2.10A: Change input for electric water heater from 6 KW to 9KW.
 2. Section 22 05 00 para. 2.17: Modify/revise specifications for the Lift Station as follows:
 - A. *(No change)*
 - Provide (2) 4" inlet pipe connections in lieu of (1).
 - B. *(No change)*
 - C. Sump shall be 36" diameter x 96" deep fiber-reinforced polyester basin with (2) 4"ci hub inlet, compression flanged discharge, ballast support flange.
 1. *(No change)*
 2. Provide concrete ballast for sump basin and embed ballast support flange during installation in accordance with mfr's instructions.
 - D. *(No change)*
 - E. *(No change)* Control panel shall be Duplex NEMA 4 in lieu of 3R.
 - F. *(No change)*
 - G. *(No change)*
-

(Cont'd)

ITEMS PERTAINING TO PLUMBING DRAWINGS

1. Sht P1: - Refer to the attached sketch PSK1 for revised Duplex Pump Lift Station Detail. Pump basin depth has increased for additional inlet pipe and provide concrete base as shown.
 2. Sht P2: - Refer to the attached sketches PSK2 and PSK3 for the installation of the lift station and piping for future work in the basement area. This work shall include increased demolition of floor slabs and the installation of added piping for future connection as shown. Coordinate demolition scope with the general contractor as directed to prevent delays or conflicts with the completion of work that is identified.
 - Contractor is cautioned to provide demolition work as shown and to field verify the exact location and depth for the exist 4" waste line at the immediate start of work.
 - Contractor is responsible for field verification of depths related to the existing floor slabs and for the coordination of all information with shop drawings for the lift station basin construction.
 - All information related to the existing conditions is required and shall be included on shop drawings prior to ordering lift station. Release of the lift station shall occur after completion of shop drawing review by the Engineer.
-

End of Plumbing Addendum No. 3



ELEVATION

LS
P2 | P1

REVISED DUPLEX PUMP LIFT STATION

NOT TO SCALE

ALTERNATE NO. 1

KEY

- (D) HI WATER ALARM (1" BELOW WASTE INLET)
- (C) LAG PUMP ON
- (B) LEAD PUMP ON
- (A) PUMP OFF (LIQUID LEVEL)

Jumper

Carter

Sease

DATE: 3/7/2014	TITLE: Revised Pump Lift Station Detail	REFERENCE SHEET: P1	JOB: 1600 Hampton Annex-Renovation (DLES)	ADD#03 SHEET NO.: PSK1
-------------------	--	------------------------	--	------------------------------

STUB AND CAP 4"
WASTE PIPING BELOW
LOWER BASEMENT
FLOOR

I. E. - 978

LOWER BASEMENT

F. F. - 10000 (ASSUMED)

BASEMENT

F. F. - 10300 (ASSUMED)

MECH

ELEV

2" VENT - RISE AND
CONNECT TO EXIST
AS REQUIRED

4"

2"

110

I. E. - 976

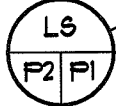
STAIR

CONNECT TO EXIST
SAN WASTE FROM
BASEMENT

I. E. - 1015 (±)

LIFT STATION CONTROL
PANEL MTD ON WALL
(208V, 3 PH)

RISE AT WALL TO
POINT ABOVE CLG
AND CONNECT TO
EXIST



ALTERNATE NO. 1

ELEV EQUIP

MECH

CONNECT TO EXIST
4" WASTE LINE ABOVE
CLG AS REQUIRED

4"

2"

CO

Jumper

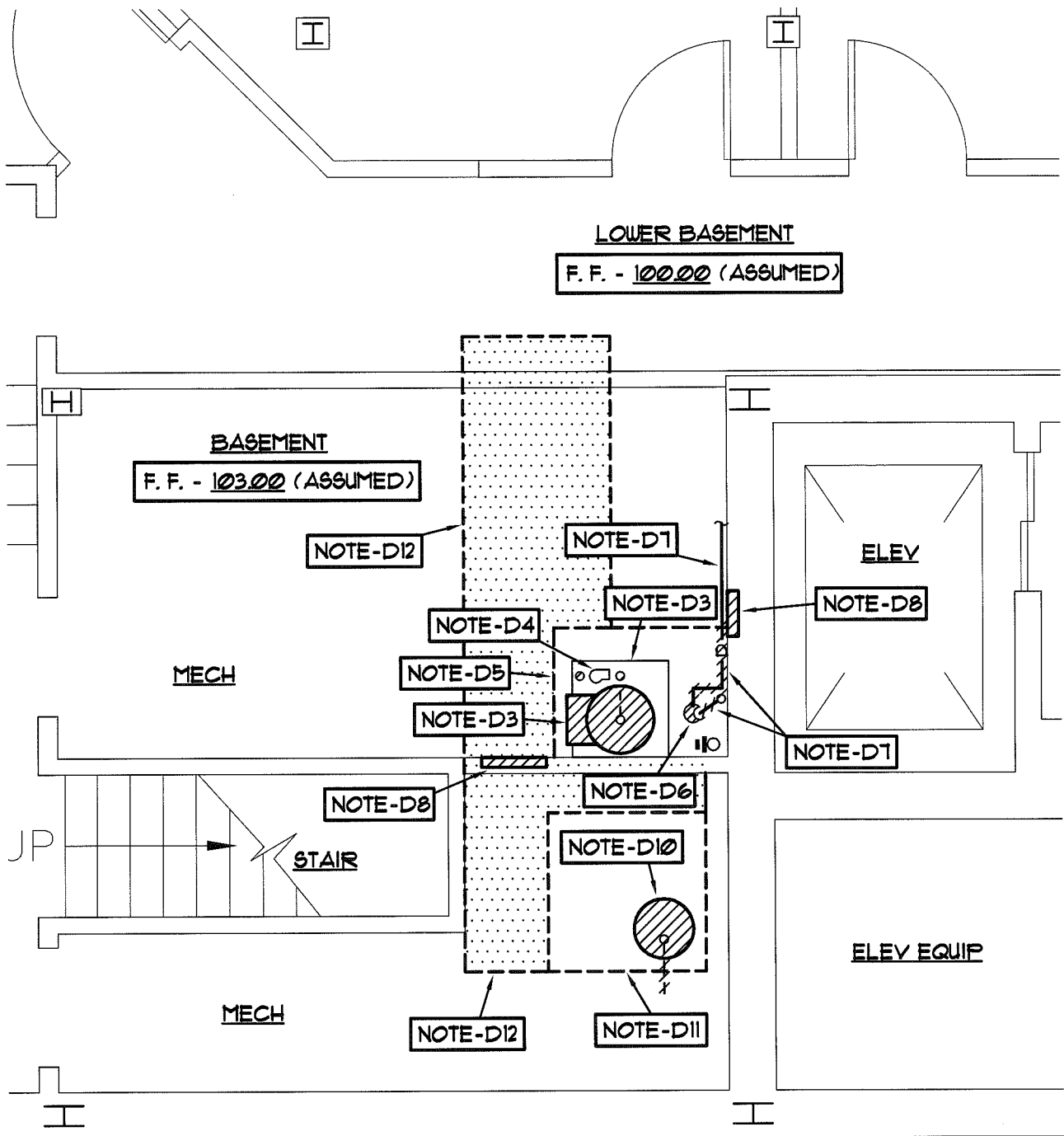
REVISED PLBG FLR PLAN - BASEMENT

Carter

SCALE: 1/2" = 1'-0"

Sease

DATE: 3/7/2014	TITLE: Revised Plbg Floor Plan - Basement	REFERENCE SHEET: P2	JOB: 1600 Hampton Annex- Renovation (DLES)	ADD#03 SHEET NO.: PSK2
-------------------	---	------------------------	--	------------------------------



REVISED PLUMBING DEMO PLAN - BASEMENT

SCALE: 1/4" = 1'-0"

D12. PROVIDE SAWCUT AND REMOVAL OF EXISTING FLOOR SLAB THIS APPROXIMATE LOCATION FOR THE INSTALLATION OF 4" WASTE LINE TO SERVE TENANT UPFIT. SEE REVISED PLBG FLOOR PLAN, THIS ADDENDUM FOR LOCATION OF PIPING.

Jumper

Carter

Sease

DATE: 3/7/2014	TITLE: Revised Plbg Demolition Plan - Basement	REFERENCE SHEET: P2	JOB: 1600 Hampton Annex- Renovation (DLES)	ADD#03 SHEET NO.: PSK3
-------------------	--	------------------------	--	------------------------------

HVAC POWER EQUIPMENT SCHEDULE

ITEM	CIRCUIT	VOLTAGE	MCA	MOC P	CONDUIT	WIRING	DISCONNECT A/V/FUSE/ENCLOSURE	NOTES
WH-1	BEB34/36	208-1-60	54.1	60	1"	1#10 G, 2#6	60A/240V/NF/NEMA 1	
RP-1 (RECIRC. PUMP)	BEB-9	120-1-60	---	---	3/4" C	1#12 G, 2#12	20A/120V/NF/NEMA 1	2
SP-1	BEB-7	120-1-60	9.0	20	EXISTING	EXISTING	GFCI RECEPTACLE	
LS-1	BEB-38/40/42	208-3-60	9.4	15	3/4" C	1#12 G, 3#12	30A/240V/NF/NEMA 3R	

Jumper

Carter

Sease

DATE:	3/7/2014	TITLE:	Water heater Change	REFERENCE SHEET:	E301	JOB:	1600 Hampton Annex - Deferred Maintenance	SHEET NO.:	ADD #03 E301.1
-------	----------	--------	---------------------	------------------	------	------	--	------------	-------------------