

### General Notes

- 1) Roof top equipment and drain locations are approximate
- 2) Contractor's are responsible for all measurements

### Key Plan

- ① Roof Drain
- ② Gutter Edge
- ③ Roof to Wall Expansion Joint
- ④ Wall Flashing
- ⑤ Curb
- ⑥ Metal Coping Cap
- ⑦ Flashing at Overflow Scuppers
- ⑧ Stack Vent Base
- ⑨ Plumbing Vent

### Legend

- Roof Hatch
- Curbed Fan
- Roof Drain w/ Sump
- Stack Vent
- Roof to Wall Expansion Jt.
- Overflow Scupper
- Gutter
- Downspout

No.	Revision/Issue	Date
1		05/14/12

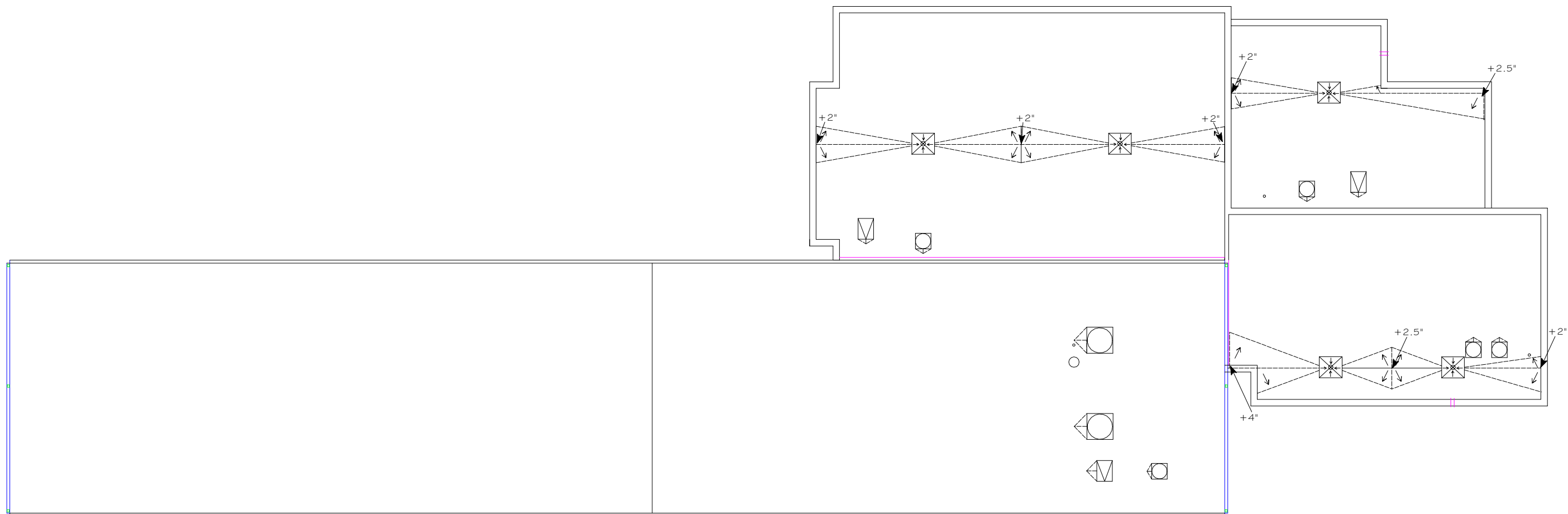
University of South Carolina  
Library Annex &  
Conservation Facility  
Roof Replacement

## ROOF DIAGRAM & KEY PLAN

Prepared by Lyon & Associates Roofing & Waterproofing Consultants	Sheet 1 of 4
Date 05/14/2012	
Scale Not to Scale	

### General Notes

- 1) Roof top equipment and drain locations are approximate
- 2) Contractor's are responsible for all measurements
- 3) Cricket slope: 1/2" in 12"
- 4) Cricket length to width ratio: 3:1
- 5) Cricket thickness indicated is net above base layer of insulation
- 6) Drain sumps are 4' x 4'



### Legend

- Roof Hatch
- Curbed Fan
- Roof Drain w/ Sump
- Stack Vent
- Roof to Wall Expansion Jt.
- Overflow Scupper
- Gutter
- Downspout

2		05/14/12
No.	Revision/Issue	Date

University of  
South Carolina  
Library Annex &  
Conservation Facility  
Roof Replacement

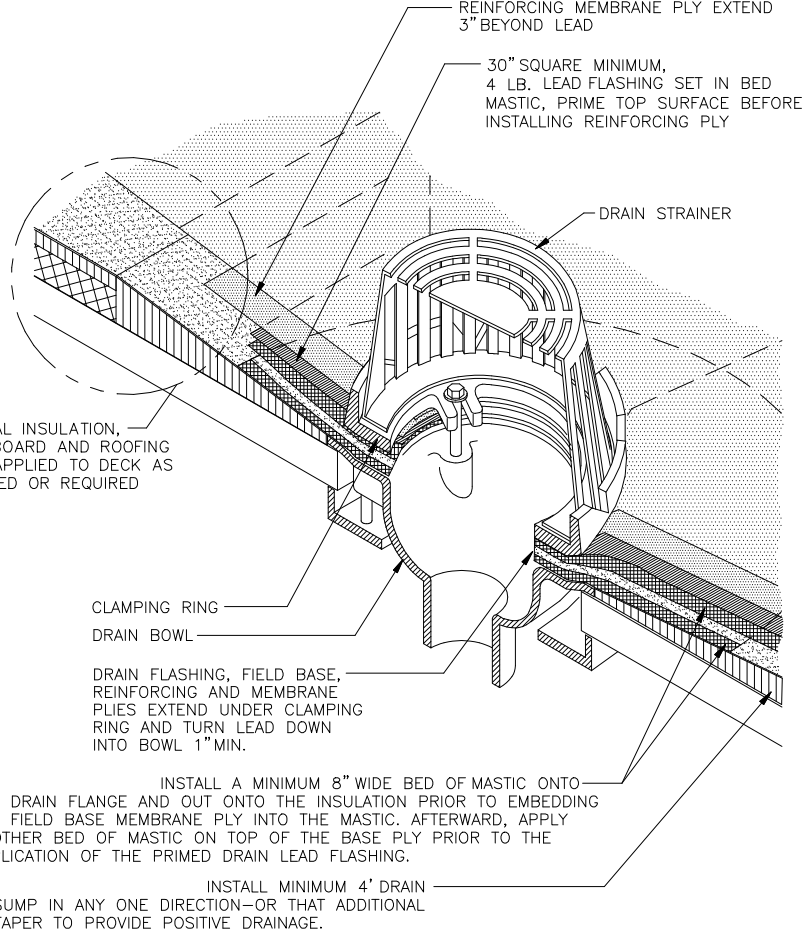
Roof Crickets  
&  
Drain Sumps

Prepared by Lyon & Associates Roofing & Waterproofing Consultants	Sheet
Date 05/14/2012	2 of 4
Scale Not to Scale	

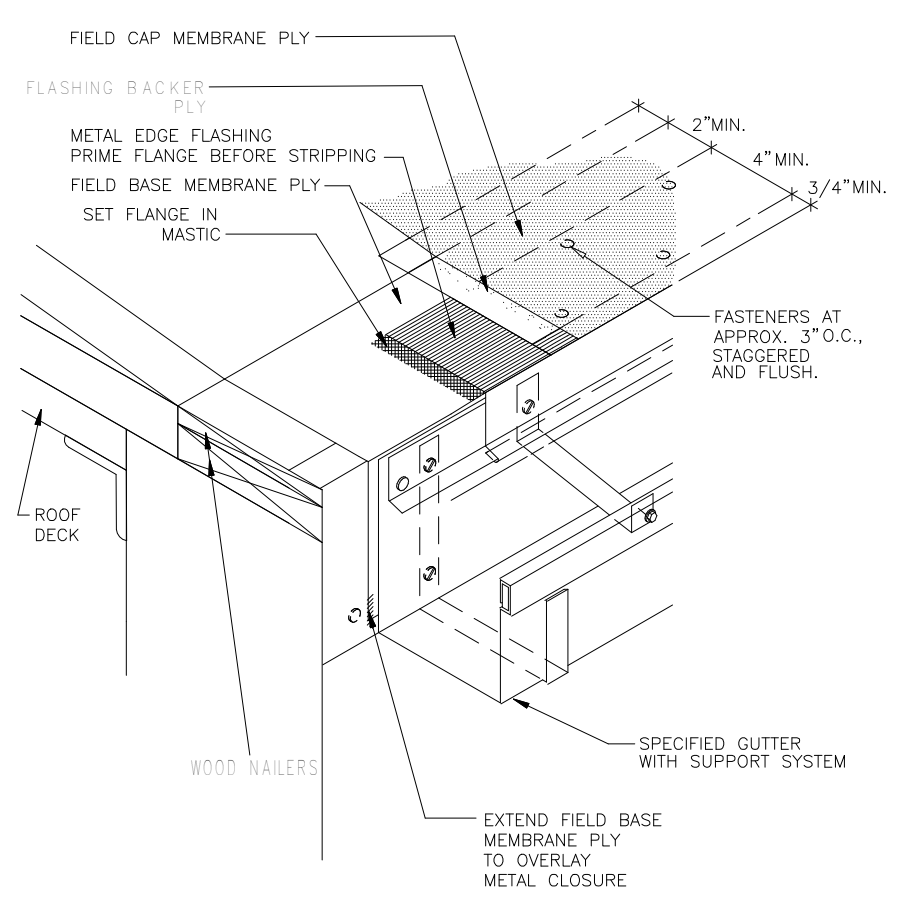
1) All curbs are to be raised if necessary to achieve 8" min. height above finished roof surface.

2) Insulation crickets are to be installed behind curbs to facilitate drainage

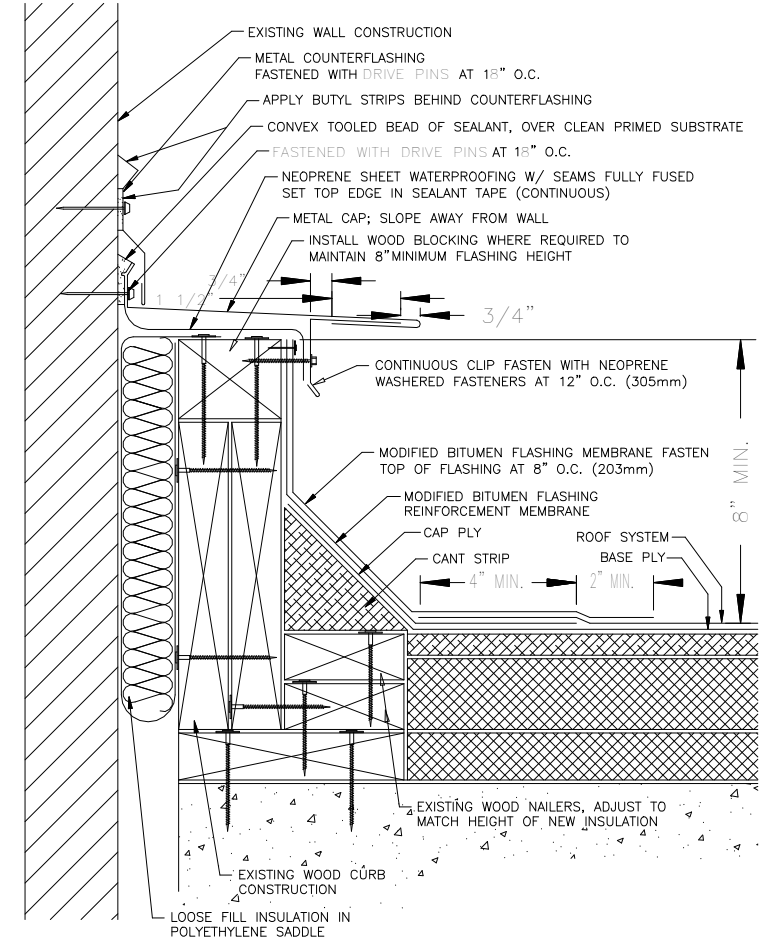
3) Shop drawings are required for this project (see Project Manual)



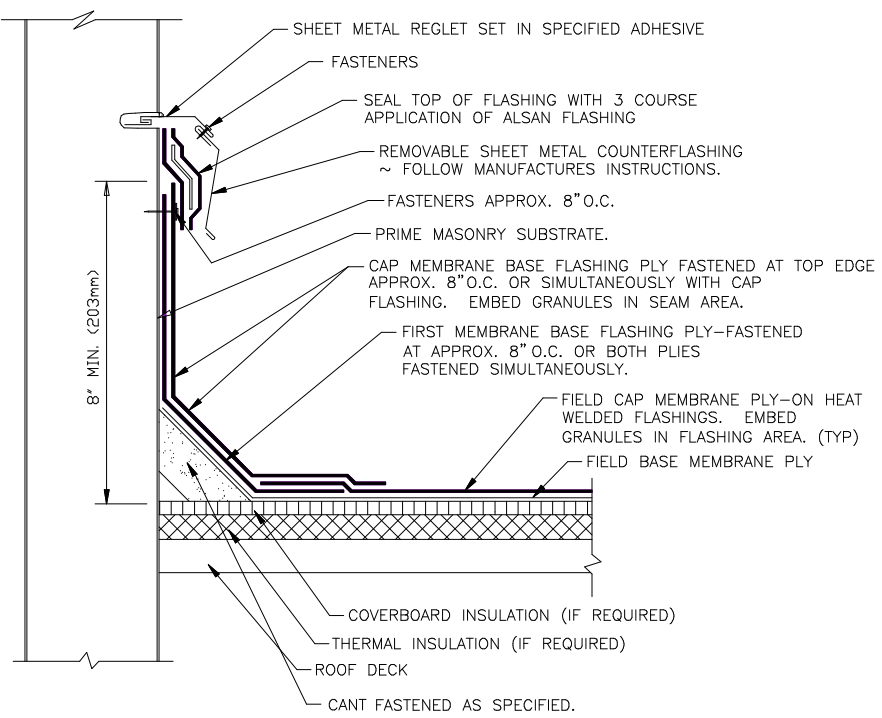
① ROOF DRAIN



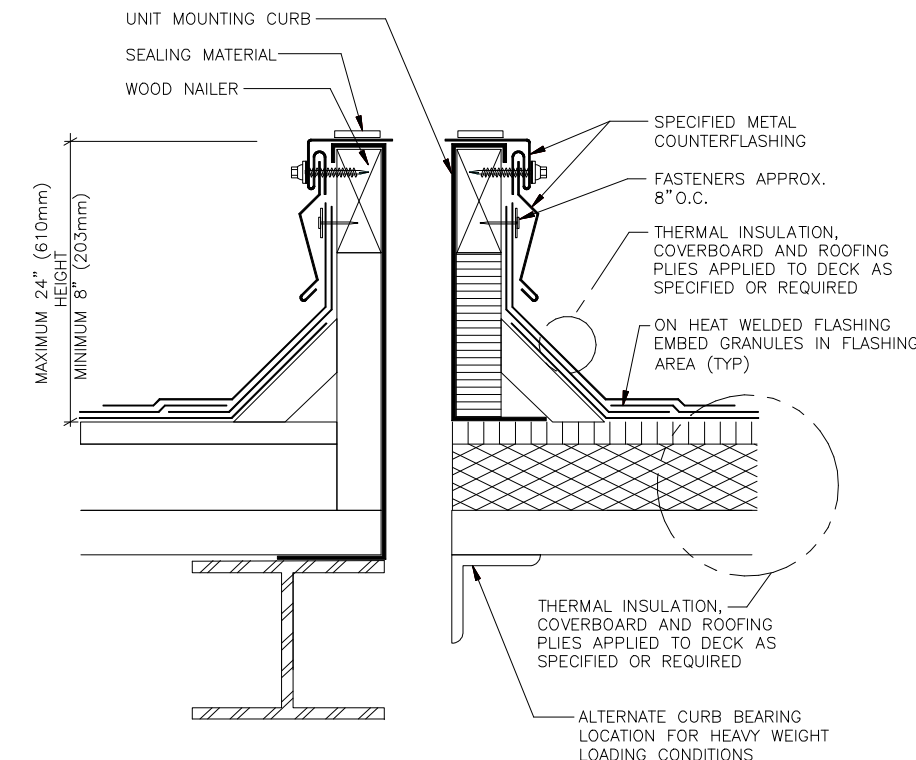
② GUTTER EDGE



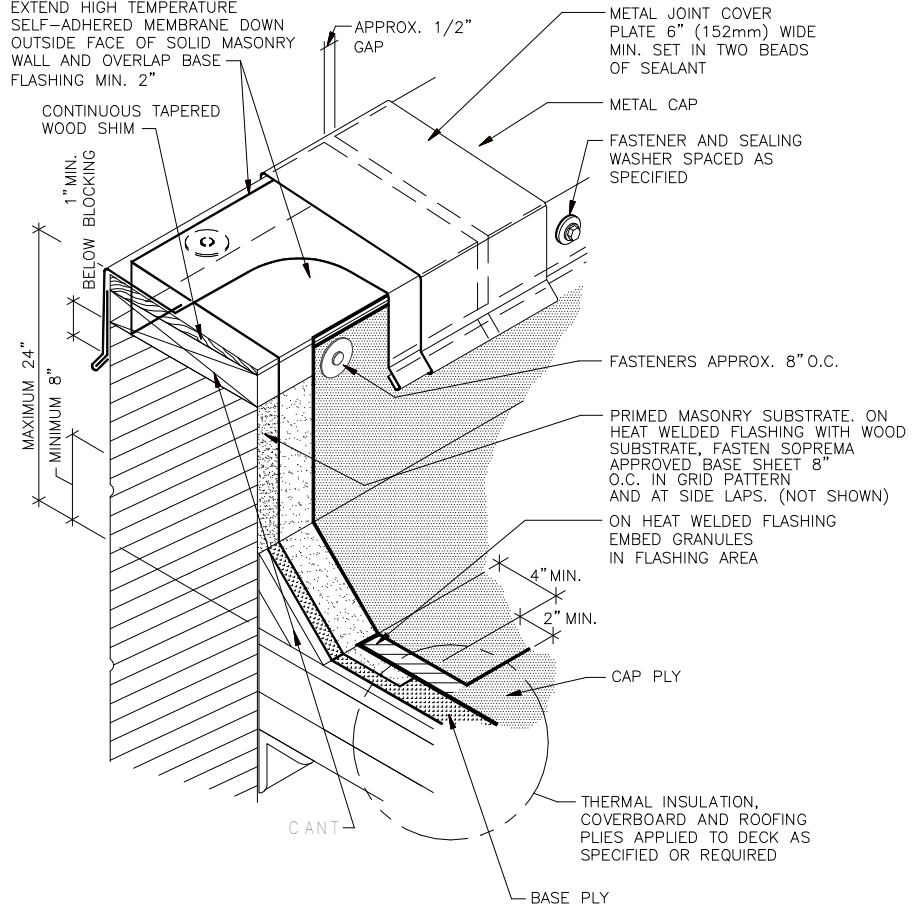
③ ROOF TO WALL EXPANSION JOINT



④ WALL FLASHING



⑤ CURB



⑥ METAL COPING CAP

3		5/14/12
No.	Revision/Issue	Date

University of South Carolina Library Annex # Conservation Facility Roof Replacement

ROOF DETAILS

Prepared by Lyon & Associates Roofing & Waterproofing Consultants	Sheet 3 of 4
Date 5/14/2012	
Scale Not to Scale	

General Notes

1) All curbs are to be raised if necessary to achieve 8" min. height above finished roof surface.

2) Insulation crickets are to be installed behind curbs to facilitate drainage

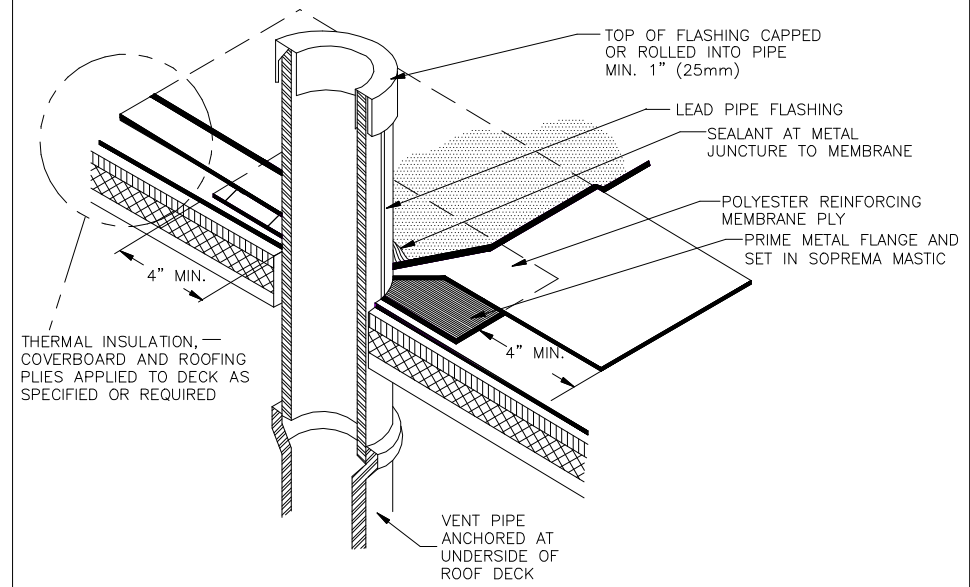
3) Shop drawings are required for this project (see Project Manual)

4		5/14/12
No.	Revision/Issue	Date

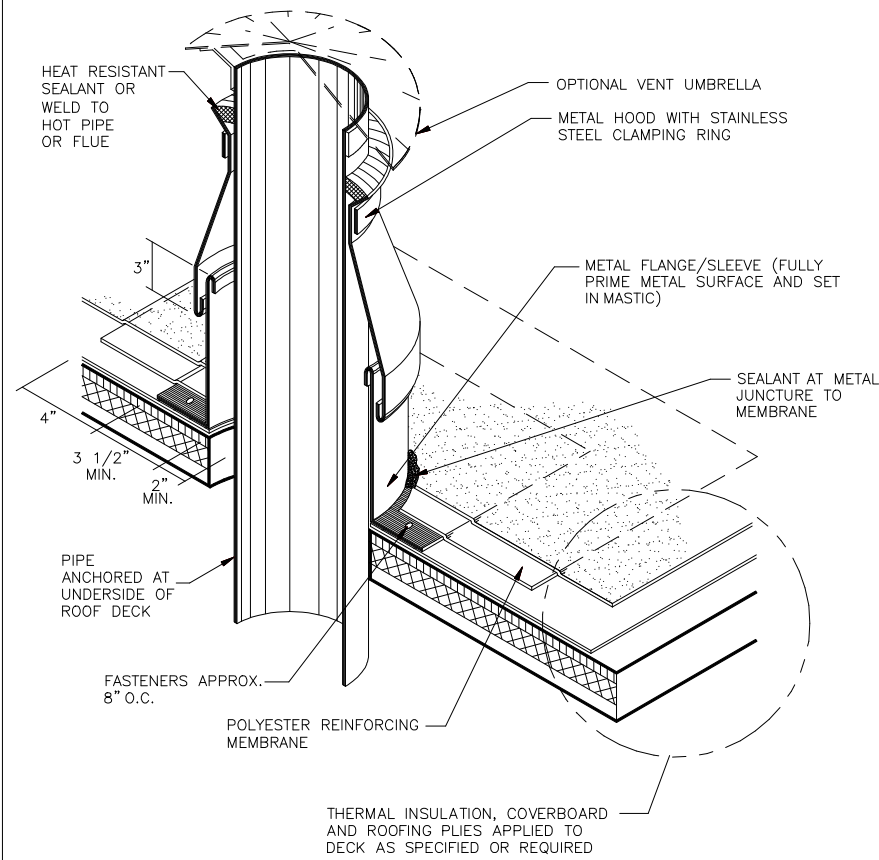
University of South Carolina  
Library Annex #  
Conservation Facility  
Roof Replacement

ROOF DETAILS

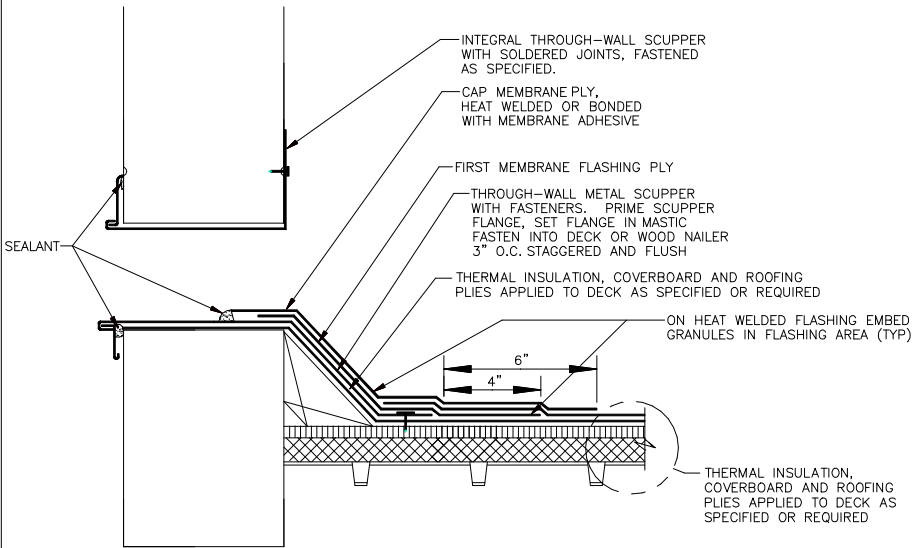
Prepared by Lyon & Associates Roofing & Waterproofing Consultants	Sheet 4 of 4
Date 5/14/2012	
Scale Not to Scale	



⑨ PLUMBING VENT



⑧ STACK VENT BASE



⑦ FLASHING AT OVERFLOW SCUPPERS