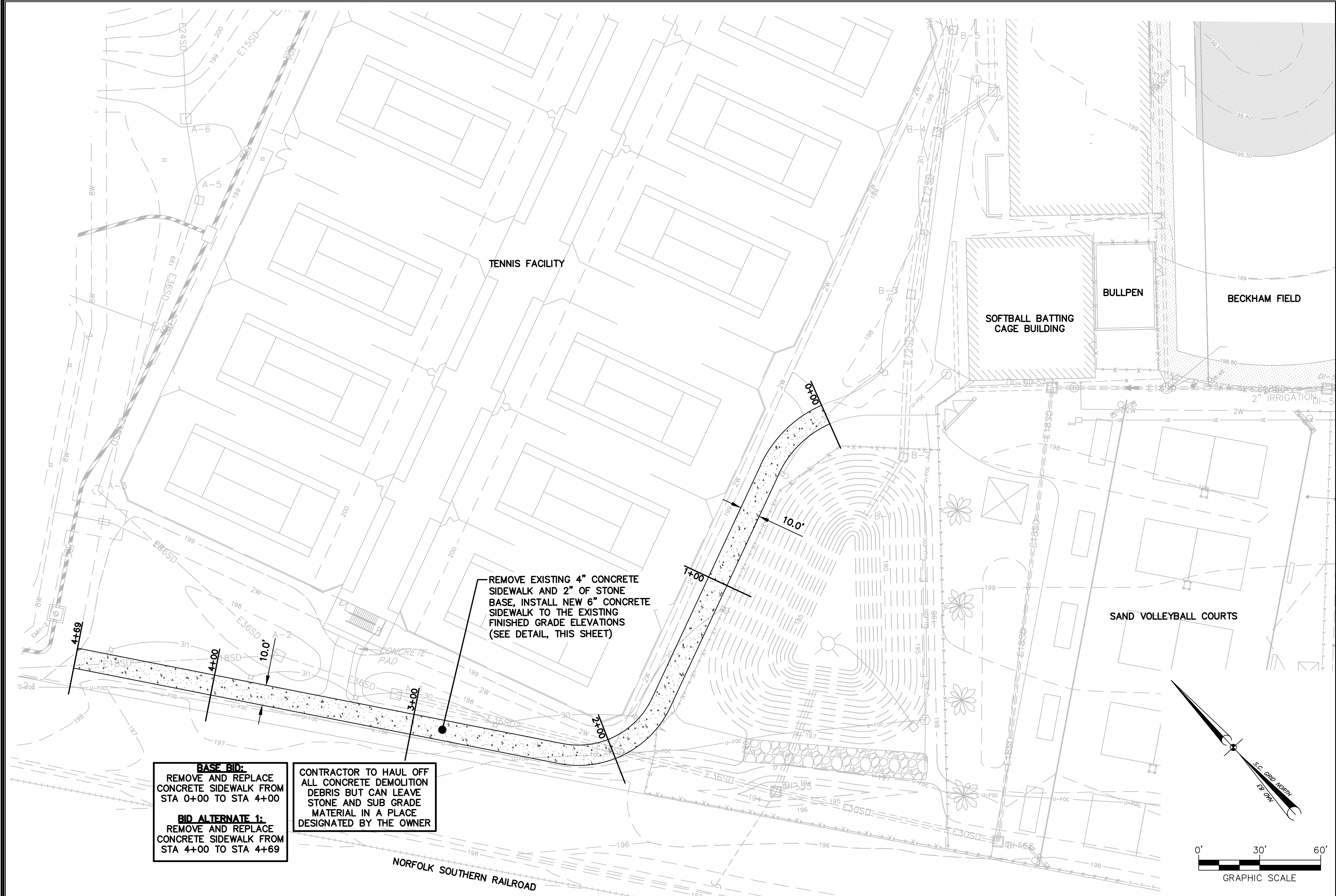


THIS DRAWING IS THE PROPERTY OF URS CORPORATION, AND IS NOT TO BE REPRODUCED OR COPIED IN WHOLE OR IN PART, IT IS ONLY TO BE USED FOR THE PROJECT AND SITE SPECIFICALLY IDENTIFIED HEREIN, AND IS NOT TO BE USED ON ANY OTHER PROJECT.
 N:\PRODUCTS\46423715 & 46423716\USC SOFTBALL SIDEWALK REPAIR.DWG 2/11/2015 3:57:01 PM



BASE BID:
REMOVE AND REPLACE CONCRETE SIDEWALK FROM STA 0+00 TO STA 4+00

BID ALTERNATE 1:
REMOVE AND REPLACE CONCRETE SIDEWALK FROM STA 4+00 TO STA 4+69

CONTRACTOR TO HAUL OFF ALL CONCRETE DEMOLITION DEBRIS BUT CAN LEAVE STONE AND SUB GRADE MATERIAL IN A PLACE DESIGNATED BY THE OWNER

REMOVE EXISTING 4" CONCRETE SIDEWALK AND 2" OF STONE BASE, INSTALL NEW 6" CONCRETE SIDEWALK TO THE EXISTING FINISHED GRADE ELEVATIONS (SEE DETAIL, THIS SHEET)

NOTES:

- REFERENCE IS MADE TO THE FOLLOWING:
 - BOUNDARY, TOPOGRAPHIC, & UTILITY SURVEYS PREPARED FOR THE UNIVERSITY OF SOUTH CAROLINA BY BP BARBER & ASSOCIATES, DATED MAY 16, 2007 THROUGH OCTOBER 4, 2007.
 - CONSTRUCTION PLANS FOR THE USC ATHLETIC VILLAGE INFRASTRUCTURE DEVELOPMENT CONSTRUCTION PROJECT PREPARED BY BP BARBER & ASSOCIATES, DATED JANUARY 20, 2010, WITH REVISIONS (BP BARBER PROJECT NUMBER 07578).
 - CONSTRUCTION PLANS FOR THE USC SOFTBALL STADIUM CONSTRUCTION PROJECT PREPARED BY URS CORPORATION, DATED MARCH 16, 2012, WITH REVISIONS (URS PROJECT NUMBER 46422193).
 - CONSTRUCTION PLANS FOR THE USC ATHLETIC VILLAGE SAND VOLLEYBALL COURT CONSTRUCTION PROJECT PREPARED BY URS CORPORATION, DATED MAY 30, 2013, WITH REVISIONS (URS PROJECT NUMBER 46422848).
- ALL ELEVATIONS SHOWN ARE BASED ON:
HORIZONTAL: SOUTH CAROLINA STATE PLANE COORDINATE NAD 83
VERTICAL: NAVD 88
- VERIFY ALL FIELD CONDITIONS AND THE EXACT LOCATIONS OF ALL UNDERGROUND UTILITIES PRIOR TO BEGINNING DEMOLITION AND CONSTRUCTION. IF CONDITIONS ARE DIFFERENT FROM THAT SHOWN ON THE PLANS, STOP WORK AND NOTIFY THE ENGINEER.
- ALL WORK FOR THE PROJECT SHALL CONFORM TO THE PROJECT SPECIFICATIONS FOUND IN THE PROJECT MANUAL (CONTRACT DOCUMENTS AND SPECIFICATIONS).
- PROMPTLY INFORM THE ENGINEER OF ANY DISCREPANCY DISCOVERED IN THESE DRAWINGS OR SPECIFICATIONS OR CONFLICT BETWEEN THE DRAWINGS OR SPECIFICATIONS.
- THESE CIVIL/SITE PLANS ARE PART OF THE OVERALL PROJECT PLAN SET. REVIEW PLANS OF ALL TRADES FOR CONSTRUCTION COORDINATION AND NOTIFY THE ENGINEER OF ANY CONFLICTS PRIOR TO BEGINNING CONSTRUCTION.
- BURNING OF ANY MATERIAL, DEBRIS, OR TRASH ON SITE WILL NOT BE PERMITTED.
- ALL DEMOLITION DEBRIS TO BE REMOVED SHALL BE DISPOSED OF OFF-SITE IN ACCORDANCE WITH ALL LOCAL, STATE AND FEDERAL REGULATIONS AND SPECIFICATIONS, LATEST REVISION.
- IN ADDITION TO INFORMATION OBTAINED FROM SITE VISITS AND A FIELD SURVEY, THE EXISTING UNDERGROUND UTILITIES SHOWN HEREIN ARE BASED ON A COMBINATION OF AVAILABLE SOURCE INFORMATION PROVIDED BY OTHERS, INCLUDING AS-BUILT DRAWINGS AND EXISTING UTILITIES RECORDS AND/OR MAPS. A CONCERTED EFFORT TO LOCATE ALL EXISTING UTILITIES WAS MADE, HOWEVER, LOCATION OF UNDERGROUND UTILITIES AS SHOWN ARE APPROXIMATE AND FOR INFORMATION PURPOSES ONLY. THE EXACT LOCATION OF ALL UNDERGROUND UTILITIES SHALL BE VERIFIED AND ANY AND ALL DAMAGES RESULTING FROM THE FAILURE TO DO SO SHALL BE REPAIRED AT NO EXPENSE TO THE OWNER. CONTACT PALMETTO UTILITY PROTECTION SERVICE (PUPS) AND OTHER LOCAL AND REGIONAL UTILITY COMPANIES AT LEAST 72 HOURS PRIOR TO COMMENCING CONSTRUCTION FOR LOCATION OF UTILITIES.
- CONTRACTOR IS RESPONSIBLE FOR VERIFYING THE EXACT LOCATIONS AND ELEVATIONS OF EXISTING UTILITIES WITHIN THE PROJECT LIMITS PRIOR TO CONSTRUCTION.
- PROTECT FROM DAMAGE EXISTING STRUCTURES, UTILITIES, ETC. THAT ARE TO REMAIN OR TO BE SALVAGED. REPAIR ANY DAMAGE TO EXISTING STRUCTURES, UTILITIES, ETC. TO ORIGINAL CONDITION, AT NO ADDITIONAL COST TO THE OWNER.
- CONTRACTOR SHALL BECOME FAMILIAR WITH THE EXISTING CONDITIONS AND BE PREPARED TO ADEQUATELY CARE FOR AND SAFEGUARD HIMSELF AND THE OWNER FROM DAMAGE.
- KEEP ALL ROADS ADJACENT TO THE SITE CLEAN DURING CONSTRUCTION.
- CONTRACTOR SHALL, FOR ALL GRASSED AREAS, BE RESPONSIBLE FOR REPLACING ERODED SOIL AND GRASS SEED UNTIL AN APPROVED STAND OF GRASS IS ESTABLISHED.
- ALL WORK AND MATERIALS MUST CONFORM WITH CITY OF COLUMBIA AND SCDHEC REGULATIONS AND SPECIFICATIONS, LATEST REVISIONS AT THE BEGINNING OF CONSTRUCTION.
- ALL AREAS WHICH ARE DISTURBED BY CONSTRUCTION ACTIVITIES SHALL BE SEEDED AT NO ADDITIONAL EXPENSE TO THE OWNER.
- INSTALL PERMANENT VEGETATIVE COVER AND THE LONG-TERM EROSION PROTECTION MEASURES OR STRUCTURES AS SOON AS PRACTICAL IN THE DEVELOPMENT PROCESS.

GRASSING NOTES

- GRASSING NOTES**
- SEED THESE AREAS IMMEDIATELY UPON COMPLETION OF GRADING OR CONSTRUCTION AND CLEAN-UP OPERATIONS.
 - SLOPES GREATER THAN FOUR HORIZONTAL TO ONE VERTICAL.
 - UTILITY RIGHTS-OF-WAY ADJACENT TO STREAM BANKS.
 - AREAS READY FOR PLANTING BETWEEN AUGUST 16 AND FEBRUARY 28 SHALL BE PLANTED WITH A TEMPORARY COVER OF SCHEDULE NO. 2. AT THE ACCEPTABLE SEASONS FOR PLANTING SCHEDULE NO. 1, THE TURF SHALL BE DESTROYED BY REWORKING THE SOIL, AND SCHEDULE NO. 1 SEEDING ESTABLISHED AS SPECIFIED HEREIN.
 - USE RATE A LBS. PER 1000 SQ. FT. ON SLOPES OVER 5' HORIZONTAL TO 1' VERTICAL IN HEIGHT AND USE RATE B LBS. PER 1000 SQ. FT. ON SLOPES LESS THAN 5' HORIZONTAL TO 1' VERTICAL.
 - SEE GRASSING SPECIFICATIONS (SECTION 02930) FOR ADDITIONAL REQUIREMENTS.

GRASSING SCHEDULES:

GRASSING SCHEDULE NO. 1 - PLANTING DATES MARCH 1 TO AUGUST 15:

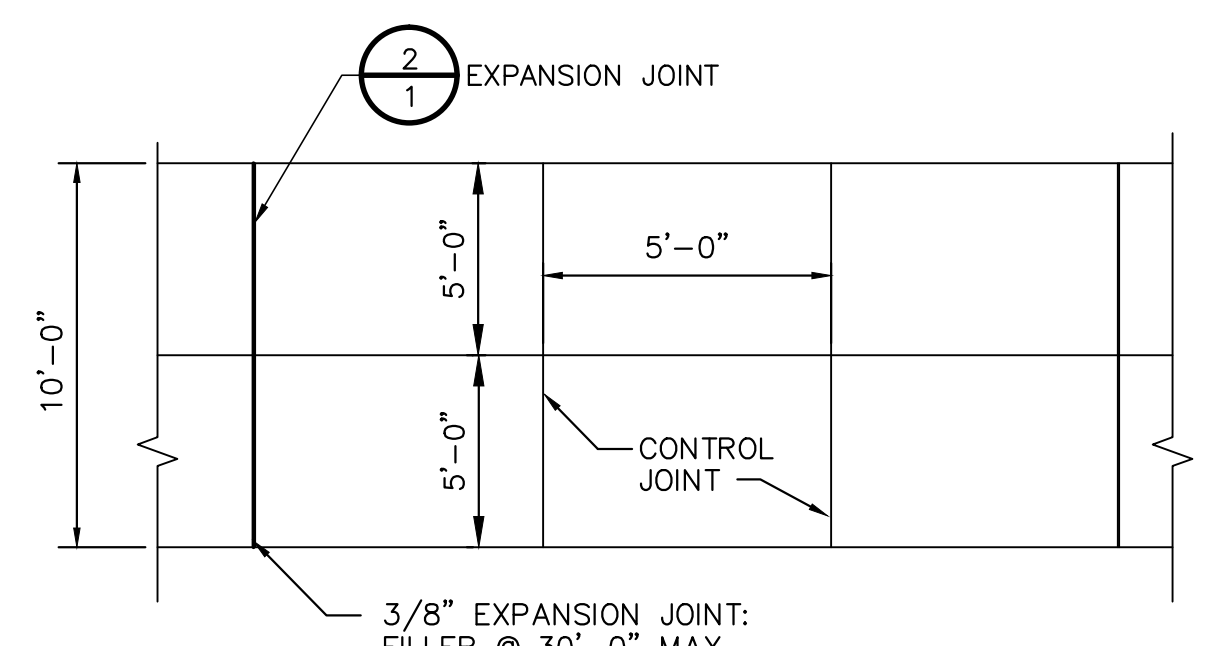
COMMON NAME OF SEED	RATE A	RATE B
RYE GRAIN	1	1
COMMON BERMUDA (HULLED)	0	1.5
SERICEA LESPEDEZA (CLAY SOILS)	1	0
WEEPING LOVE GRASS (SANDY SOILS)	1	0
CENTPEDE	0.5	0.5
FERTILIZER	18-25	18-25

GRASSING SCHEDULE NO. 2 - PLANTING DATES AUGUST 16 - FEBRUARY 28:

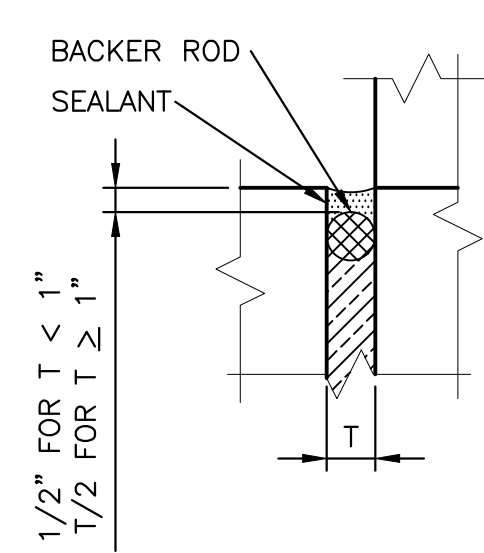
COMMON NAME OF SEED	RATE A	RATE B
RYE GRAIN	0	1
COMMON BERMUDA (HULLED)	0	1.5
BROWN TOP MILLET	5	0
COMMON BERMUDA (UNHULLED)	0	2.0
FERTILIZER	18-25	18-25

SIDEWALK MAINTENANCE PLAN

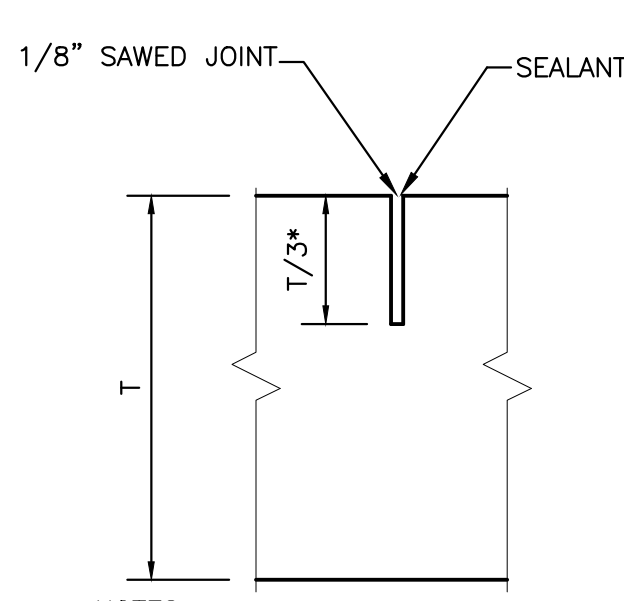
SCALE: 1"=30'



- NOTES:**
- MINIMUM THICKNESS = 6".
 - PROVIDE EXPANSION JOINTS @ INTERSECTIONS OF WALKS AND WHERE WALK ABUTTS OTHER STRUCTURES.
 - 4,000 PSI MINIMUM CONCRETE.
 - SIDEWALKS TO HAVE LIGHT BROOM FINISH.
 - ALL JOINTS AND EDGES TO BE TOOLED.
 - CONTROL JOINTS TO BE TOOLED TO A MINIMUM DEPTH OF 1".



- NOTES:**
- USE T=1" FOR NEW CONCRETE ADJACENT TO BUILDINGS OR EXISTING SAW-CUT PAVEMENT/CONCRETE.
 - PROVIDE 1/2" EXPANSION JOINT WHERE CONCRETE PAVING AND SIDEWALK ABUTS ADJACENT STRUCTURES AND DISSIMILAR SURFACES.



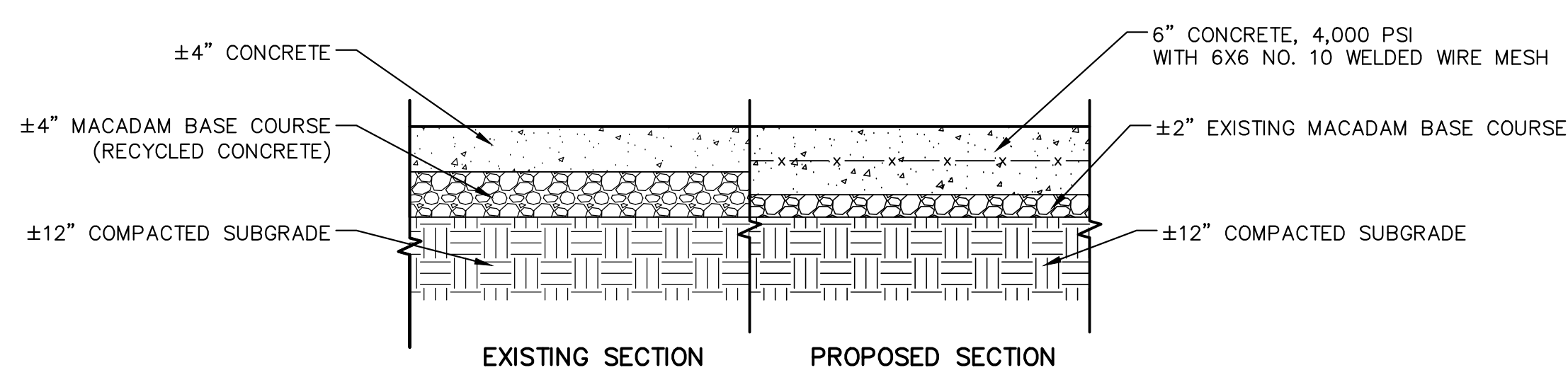
- NOTES:**
- JOINTS SHALL BE LOCATED AS SHOWN ON THE PLANS OR 10'-0" OC EW (MAX).
 - JOINT DEPTH = 2 1/2" (MAX)

3 DAYS BEFORE DIGGING IN SOUTH CAROLINA

Call 811 Before you Dig

PALMETTO UTILITY PROTECTION SERVICE, INC. (PUPS)

ALL UTILITIES MAY NOT BE A MEMBER OF PUPS. COORDINATE WITH LOCAL UTILITY COMPANIES FOR MARKING OF THEIR UTILITIES ALSO.



CONCRETE SIDEWALK

DETAIL SCALE: NONE (1) TYP

EXPANSION JOINT

DETAIL SCALE: NONE (2) TYP

CONTROL JOINT

DETAIL SCALE: NONE (3) TYP

CONCRETE SIDEWALK

DETAIL SCALE: NONE (4) TYP

BID DOCUMENTS

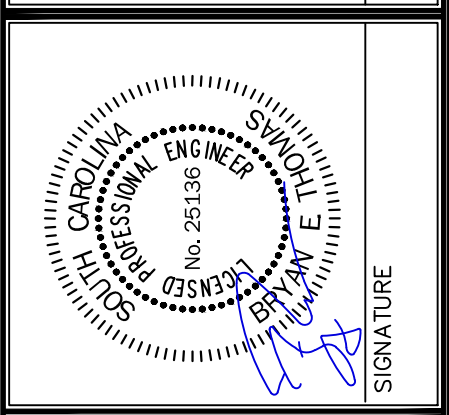
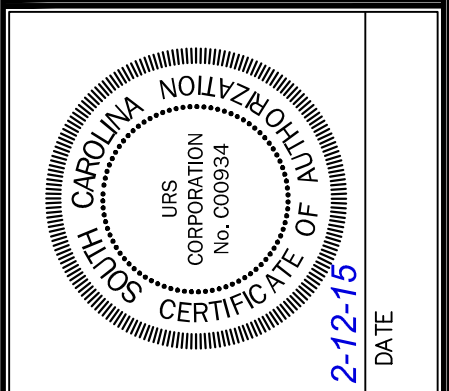
THESE DOCUMENTS ARE FOR THE PURPOSE OF SOLICITATION OF BIDS AND ARE NOT FOR USE FOR CONSTRUCTION

REVISIONS

NO.	DESCRIPTION	DATE	BY

APPROVALS

PROJECT ENG:	DESIGNED BY:	DRAWN BY:	CHECKED BY:	APPROVED:
BET	MOJ	MOJ	BET	BET



URS

101 Research Drive
Columbia, South Carolina 29203
Telephone (803) 254-4400 : Fax (803) 771-6676
www.URScorp.com

SIDEWALK MAINTENANCE PLAN

DATE: FEB 12, 2015 SCALE: AS SHOWN

PROJECT: SOFTBALL SIDEWALK REPAIR PREPARED FOR THE UNIVERSITY OF SOUTH CAROLINA CITY OF COLUMBIA SOUTH CAROLINA

.DWG NAME	SHEET
N.B. NO.	1
REF.	OF
PROJECT NO.	1
46423715	
FILE NO.	36,387-B91