

A1 FINISH PLAN - 1st FLOOR
302-4-147

GENERAL NOTES

- PRIOR TO INSTALLATION AND FABRICATION, CONTRACTOR SHALL COORDINATE WITH ARCHITECT AND INTERIOR DESIGNER TO REVIEW ALL FLOOR PATTERNS, FINISHES AND DOCUMENTATION INFORMATION.
- PRIOR TO PROVIDE, PAINTING CONTRACTOR SHALL SUBMIT TO ARCHITECT/INTERIOR DESIGNER EACH PAINT COLOR FINISH ON A 1/2" X 1/2" SHEET OF CHROME/GRAY FOR PRELIMINARY APPROVAL. FOR FINAL APPROVAL BY OWNER AND ARCHITECT PRIOR TO PAINTING, THE PAINTING CONTRACTOR SHALL PRINT EACH PAINT COLOR WITH THE DESIGNATED FINISH ON A 4" X 4" PIECE OF GYPSUM BOARD. SAMPLE BOARDS SHALL BE REVIEWED AND APPROVED AT THE JOBSITE WITH THE APPROPRIATE LISTING.
- INSTALLERS OF EACH FINISH MATERIAL SHALL INSPECT BOTH THE SUBSTRATE AND CONDITIONS UNDER WHICH WORK IS TO BE PERFORMED. INSTALLER SHALL NOT PROCEED UNLESS MANUFACTURER'S CONDITIONS HAVE BEEN CORRECTED IN AN ACCEPTABLE MANNER TO ALL PARTIES AND MEET ALL MANUFACTURER'S REQUIREMENTS.
- ALL FINISH MATERIALS SHALL COMPLY WITH SECTION 03.01 OF RESTRICTIONS OF COMPLIABLE MATERIALS OF THE INTERNATIONAL BUILDING CODE. ALL INTERIOR FINISHES SHALL BE CLASS A OR BETTER.
- THE INTENT IS TO PROVIDE A COMPLETE INTERIOR FINISH WHETHER OR NOT SPECIFICALLY INDICATED. ITEMS SHALL BE FINISHED AND/OR PAINTED AS DIRECTED BY DESIGNER, WHETHER OR NOT SPECIFICALLY SCHEDULED OR INDICATED ON DRAWINGS.
- CARPET INSTALLER SHALL SUBMIT LAYOUT PATTERNS SHOP DRAWING FOR ALL AREAS SPECIFIED TO RECEIVE CARPET PATTERNING TO COMMENCEMENT OF WORK.
- PAINT ALL EXPOSED AND SEMI-EXPOSED WOOD BLOCKING AND METAL SUPPORTS TO MATCH ADJACENT SURFACES. COORDINATE WITH INTERIOR DESIGNER.
- PRINTED FINISH ON METAL SURFACES SHALL BE SMOOTH, CLEAR AND FREE OF ALL BRUSH MARKS.
- GC TO INSTALL RUBBER REDUCER STRIP AT ALL FLOOR FINISH TRANSITIONS AND SPLITTERS (OR EQUAL METAL TRANSFER STRIP AT THE LOCATIONS. REFER TO DETAILS ON A-711.
- PAINT METAL WALL-MOUNTED ACCESS DOORS, GRIELLES, RETURN AIR GRILLES, COVER PLATES, PAN COIL UNITS, FIRE EQUIPMENT CABINETS, AND ELECTRICAL APPLIANCES TO MATCH ADJACENT SURFACE UNLESS OTHERWISE NOTED.
- FLOOR PATTERNS TO CONTINUE UNDER ALL OPEN WOODWORK SURFACES.
- FLOORING CONTRACTOR SHALL MAKE ADJUSTMENTS TO ACCOMMODATE FOR ANY DIFFERENCES IN THE FIELD HEIGHT OF THE CARPET.
- PRIOR TO ORDERING, SUB CONTRACTORS FOR FLOORING, PAINTING, AND MECHANICAL SHALL SUBMIT TO ARCHITECT FOR DESIGNER'S REVIEW A 3" X 3" SAMPLE OF EACH MATERIAL SPECIFIED FOR FINAL APPROVAL.
- IF ANY DISCREPANCIES OR OMISSIONS ARE NOTED IN THESE DRAWINGS, CONTACT INTERIOR DESIGNER OR ARCHITECT PRIOR TO ORDERING OR COMMENCING WORK.
- IT IS THE RESPONSIBILITY OF THE CONTRACTOR TO CHECK LEAD TIMES ON FINISHES IN ORDER TO AVOID DELAYING WORK.
- INSTALL TO USE PROPER LEVELING SPACERS IN ORDER TO OBTAIN GROUT JOINT SEE SPECIFICATIONS BY ARCHITECT OR INTERIOR DESIGNER.
- ALL CARPET TO BE GROUTED GROUT DOWN INSTALLATION WITH RELEASE ADHESIVE PER MANUFACTURER'S INSTRUCTIONS. GROUT CARPET TO BE INSTALLED ON SMOOTH, CLEAN SUBSTRATE USING MINIMUM JOINTS & SEAM. GC TO ENSURE MATCHING DIRECTOR OF CARPET IN SAME PATTERN & COLOR. CARPET MAP TO RUN IN SAME DIRECTION AT ALL SEAMS. GROUT JOINT SEAMS TO HAVE HEAVY DUTY SEAM SEALER PER MANUF. RESTRICTIONS, TYP.
- ALL SURFACE PAINT PER INTERIOR FINISH LEGEND, OVER CEILING PAINT TO BE FLAT FINISH & METAL PAINT ON WOOD DOORS TO BE PAINTED SEMI-GLOSS LATEX FINISH. COLOR PER DRAWINGS. ALL HOLLOW METAL DOOR FRAMES TO BE PAINTED WITH SEMI-GLOSS PAINT PER DRAWINGS.
- UNLESS OTHERWISE NOTED AT ALL SEAMS, GROUT JOINT SEAMS TO HAVE HEAVY DUTY SEAM SEALER PER MANUF. RESTRICTIONS, TYP.
- UNLESS OTHERWISE NOTED, PROVIDE (1) PRIMER COAT (ITEMS 1 & 4) FINISH COATS OF PAINT FOR ALL WALLS OR AREAS RECEIVING SATURATED COLOR. GC TO ENSURE ALL TAPE & SPACERS BE SMOOTH AT THESE LOCATIONS.
- CONTRACTOR TO REPAIR AND REFINISH ALL FINISHES TO MATCH EXISTING FINISHES WHEN SELECTIVE DEMOLITION IS REQUIRED TO RECONSTRUCT NEW WALL PARTITIONS OR TO CARRY OUT LIGHTING, MECHANICAL, CEILING AND FIRE ALARM DEVICE REWORK/REPAIR.
- GC TO PROVIDE FLOORING TRANSITION. REFER TO DETAILS ON A-711.
- RUBBER REDUCER, REFER TO DETAIL ON A-711 AND FINISH SCHEDULE. MOULDING TO BE CONTIGUOUS ALONG ENTIRE RISER.
- PROTECT TILE AND PATTERNS FROM LOBBY AREA TO EXTEND INTO CORRIDOR.
- TERMINATE WITH FULL TILE. GC TO PROVIDE SPLITTER (OR EQUAL) METAL TRIM EDGE PIECE REFER TO DETAIL ON A-711.
- REFER TO MANUFACTURER COLOR LAYOUT DRAWING FOR CARPET PATTERN INSTALLATION. REDUCER FROM LSP.
- CARPET TO BE INSTALLED IN A HERRINGBONE PATTERN USING EQUAL DISTRIBUTION OF CPFC, CPFL, AND CPFS. COLORS TO BE ARRANGED RANDOMLY.

ROOM FINISH TAG LEGEND

ROOM NAME	ROOM NAME
CPFL	ROOM NUMBER
PH-1	WALL MATERIAL CODE
PH-2	BASE MATERIAL CODE
CPFL	FLOOR MATERIAL CODE
1-2-4	ROOM FINISH NOTE

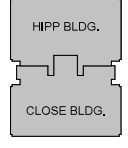
LEGEND

NOT IN CONTRACT	LEVEL
PH-1	PH-2
CPFL-1	CPFL-2
CPFL-3	CPFL-4
CPFL-5	CPFL-6

REVISIONS:

No.	Description	Date
-----	-------------	------

KEY PLAN



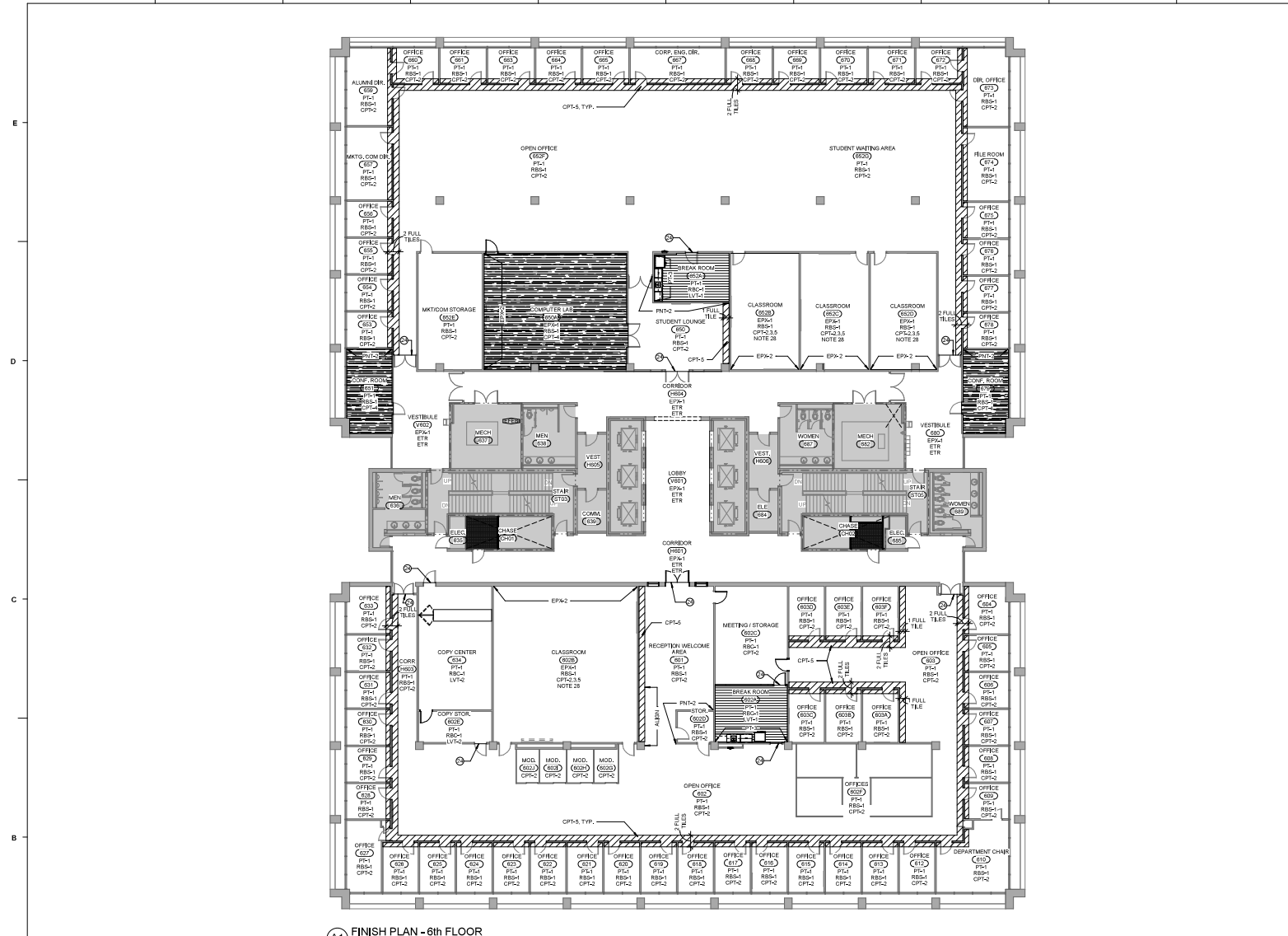
PROJECT: 2004-18800
DATE: 4/5/19
DRAWN BY: Author
CHECKED BY: Checker

FINISH PLAN - 1ST FLOOR

A-701

***INTERIOR FINISH LEGEND**

TAG	DESCRIPTION	MANUFACTURER	PATTERN NAME / #	COLOR NAME / #	SIZE	REMARKS
CPFL-1	CARPET TILE	MANNINGTON COMMERCIAL	ENTAINED COLLECTION MD500	KAMAJA 14337	24"X24"	HORIZONTAL BRCK ASHLAR INSTALLATION
CPFL-2	CARPET TILE	BENTLEY	SHAPESHIFTER 48B14	191238	19"X36"	MONOCHROME INSTALLATION LINO
CPFL-3	CARPET TILE	BENTLEY	SHAPESHIFTER 48B14	SCM4 40001	19"X36"	MONOCHROME INSTALLATION LINO
CPFL-4	CARPET TILE	BENTLEY	OUTRIDER 40203	EXTREMEY 401661	19"X36"	MONOCHROME INSTALLATION LINO
CPFL-5	CARPET TILE	BENTLEY	BURNISH 48B16	WOOD LAKE 40203	19"X36"	MONOCHROME INSTALLATION LINO
CPFL-6	CARPET TILE	BENTLEY	BURNISH 48B16	WOOD LAKE 40203	24"X24"	MONOCHROME INSTALLATION LINO
ETR	CEILING (NOT TO BE REMOVED)					
EPF-1	EPOXY PAINT	SHERWIN WILLIAMS		CREAMY E11 0W7032 - BATH FINISH		PROVIDE (1) PRIMER COAT (SHERWIN WILLIAMS MULTIPURPOSE LATEX PRIMER/SEALER) & (2) FINISH COATS OF PRO-INDUSTRIAL PRE-CATALYZED WATER BASED EPOXY
EPF-2	EPOXY PAINT	SHERWIN WILLIAMS		CRIMSON GRAY E33 590907 - 3A TFL FINISH		PROVIDE (1) PRIMER COAT (SHERWIN WILLIAMS MULTIPURPOSE LATEX PRIMER/SEALER) & (2) FINISH COATS OF PRO-INDUSTRIAL PRE-CATALYZED WATER BASED EPOXY
GRFC-1	GROUT	LATICRETE		ALBAIN TILE GROUT JOINTS AT BASE AND FLOOR	3/16"	ALBAIN TILE GROUT JOINTS AT BASE AND FLOOR
GRFC-2	GROUT	LATICRETE		78 STERLING SEVER	3/16"	ALBAIN TILE GROUT JOINTS AT BASE AND FLOOR
HRFC-1	HOLLOW METAL FRAME	CHRYSLER DOOR FRAMES (AND NEW)		CREAMY E11 0W7032 - SEMI-GLOSS		PROVIDE (1) PRIMER COAT (SHERWIN WILLIAMS MULTIPURPOSE LATEX PRIMER/SEALER) & (2) FINISH COATS OF PRO-INDUSTRIAL PRE-CATALYZED WATER BASED EPOXY. NO VEEBLE BRUSH MARKS
HRFC-2	LUXURY VINYL TILE	MANNINGTON COMMERCIAL	ANTHOLOGY ABSTRACTED STRIE	INTERACTA	18"X36"	MONOCHROME INSTALLATION
HRFC-3	LUXURY VINYL TILE	MANNINGTON COMMERCIAL	BRASS+STONE		19"X18"	MONOCHROME INSTALLATION
HRFC-4	MANUAL ROLLER SHADE	FORMICA	PW5050A OPEN			SEE DRAWINGS FOR LOCATION
HRFC-5	PLASTIC LAMINATE	FORMICA	CHOCOLATE WARP 884-242 - MATTE FINISH			CASEWORK - UPPER AND LOWER CABINETS
HRFC-6	PLASTIC LAMINATE	FORMICA	WATERGARD 884-242 - MATTE FINISH			CASEWORK - COUNTERTOPS
PH-1	PAINT	SHERWIN WILLIAMS		CREAMY E11 0W7032 - EGGSHELL FINISH		PROVIDE (1) PRIMER COAT (SHERWIN WILLIAMS MULTIPURPOSE LATEX PRIMER/SEALER) & (2) FINISH COATS
PH-2	PAINT	SHERWIN WILLIAMS		CRIMSON GRAY E33 590907 - EGGSHELL FINISH		PROVIDE (1) PRIMER COAT (SHERWIN WILLIAMS MULTIPURPOSE LATEX PRIMER/SEALER) & (2) FINISH COATS
PH-3	PAINT	SHERWIN WILLIAMS		VALD CURRANT 23-343 SWP35 - EGGSHELL FINISH		PROVIDE (1) PRIMER COAT (SHERWIN WILLIAMS MULTIPURPOSE LATEX PRIMER/SEALER) & (4) FINISH COATS
PH-4	NOT USED	SHERWIN WILLIAMS		INDIGO BATH SW 7002 - EGGSHELL FINISH		PROVIDE (1) PRIMER COAT (SHERWIN WILLIAMS MULTIPURPOSE LATEX PRIMER/SEALER) & (4) FINISH COATS
PH-5	PORCELAN TILE BASE	ROCCA TILE USA		ORION NEVE UNPOLISHED	6"X12"	ALBAIN TILE GROUT JOINTS AT BASE AND FLOOR
PH-6	PORCELAN TILE FLOOR	ROCCA TILE USA		ORION NEVE UNPOLISHED	12"X24"	3/16" OFFSET INSTALLATION
PH-7	PORCELAN TILE FLOOR	ROCCA TILE USA		ORION NEVE POLISHED	12"X24"	3/16" OFFSET INSTALLATION
PH-8	COUR THERMOPLASTIC RUBBER BASE	JOHNSONITE		469 MP1TP COG	6"	1/8" THICK 132 COILED LENGTH
PH-9	STRAIGHT THERMOPLASTIC RUBBER BASE	JOHNSONITE		469 MP1TP COG	6"	1/8" THICK 132 COILED LENGTH
PH-10	THERMOPLASTIC RUBBER NOZING	JOHNSONITE		469 MP1TP COG	1/2" X 1/2"	GC TO PROVIDE RUBBER NOZING IN ALL LOCATIONS WHERE THE ADDRESSSES OCCUR IN THESE CLASSROOMS
PH-11	THERMOPLASTIC RUBBER TRANSITION	JOHNSONITE		469 MP1TP COG	2'X4'	GC TO PROVIDE RUBBER TRANSITION STRIP BETWEEN VENTIL AND OPT TRANSITION



A1 FINISH PLAN - 6th FLOOR
392' x 142'

GENERAL NOTES

1. PRIOR TO INSTALLATION AND FABRICATION, CONTRACTOR SHALL COORDINATE WITH ARCHITECT AND INTERIOR DESIGNER TO REVIEW ALL FLOOR PATTERNS, FINISHES AND DOCUMENTATION INFORMATION.
2. PRIOR TO ORDERING, CONTRACTOR SHALL SUBMIT TO ARCHITECT/INTERIOR DESIGNER EACH PAINT COLOR FINISH ON A 1/2" X 1/4" SHEET OF CHROME-GLOSS FOR PRELIMINARY APPROVAL. FOR FINAL APPROVAL BY OWNER AND ARCHITECT PRIOR TO PAINTING, THE PAINTING CONTRACTOR SHALL PAINT EACH PAINT COLOR ON THE DISCREETED FINISH ON A 4" X 4" PIECE OF GYPSUM BOARD. SAMPLE BOARDS SHALL BE REVIEWED AND APPROVED AT THE JOBSITE WITH THE APPROPRIATE LIGHTING.
3. INSTALLERS OF EACH FINISH MATERIAL SHALL INSPECT BOTH THE SUBSTRATE AND CONDITIONS UNDER WHICH WORK IS TO BE PERFORMED. INSTALLER SHALL NOT PROCEED UNLESS SATISFACTORY CONDITIONS HAVE BEEN CORRECTED IN AN ACCEPTABLE MANNER TO ALL PARTIES AND MEET ALL MANUFACTURER'S REQUIREMENTS.
4. ALL FINISH MATERIALS SHALL COMPLY WITH SECTION 03.01 OF RESTRICTIONS OF CONTRACTIBLE MATERIALS OF THE INTERNATIONAL BUILDING CODE. ALL INTERIOR FINISHES SHALL BE CLASS A OR BETTER.
5. THE CONTRACTOR SHALL PROVIDE A COMPLETE FINISH SCHEDULE WHICH DOES NOT SPECIFICALLY INDICATED. ITEMS SHALL BE FINISHED AND/OR PAINTED AS DIRECTED BY DESIGNER, WHETHER OR NOT SPECIFICALLY SCHEDULED OR INDICATED ON DRAWINGS.
6. CARPET INSTALLER SHALL SUBMIT LAYOUT PATTERNS SHOP DRAWINGS FOR ALL AREAS SPECIFIED TO RECEIVE CARPET FLOORING PRIOR TO COMMENCEMENT OF WORK.
7. PAINT ALL EXPOSED AND SEMI-EXPOSED WOOD BLOCKING AND METAL SUPPORTS TO MATCH ADJACENT SURFACES. COORDINATE WITH INTERIOR DESIGNER.
8. PAINTED FINISH ON METAL SURFACES SHALL BE SMOOTH, CLEAR AND FREE OF ALL BRUSH MARKS.
9. GO TO INSTALL RUBBER REDUCER STRIP AT ALL FLOOR FINISH TRANSITIONS AND SCHEDULES ON METAL TRANSFER STRIP AT THE LOCATIONS. REFER TO DETAILS ON A-711.
10. PAINT METAL WALL-MOUNTED ACCESS DOORS, GRILLES, RETURN AIR GRILLES, COVER PLATES, PAN-CAL UNIT'S FIRE EQUIPMENT CABINETS AND ELECTRICAL SCHEDULES TO MATCH ADJACENT SURFACES UNLESS OTHERWISE NOTED.
11. ALL FLOOR FINISH CHANGES SHALL OCCUR AT THE CENTER LINE OF CLOSED DOORS.
12. FLOOR PATTERNS TO CONTINUE UNDER ALL OPEN WOODWORK WORK SURFACES.
13. FLOORING CONTRACTOR SHALL MAKE ADJUSTMENTS TO ACCOMMODATE FOR ANY DEVIATIONS BY THE FLOOR FINISH CONTRACTOR OR INTERIOR DESIGNER.
14. PRIOR TO ORDERING, SUB-CONTRACTORS FOR FLOORING, PAINTING, AND MECHANICAL SHALL SUBMIT TO ARCHITECT/INTERIOR DESIGNER AN 8" X 8" SAMPLE OF EACH MATERIAL SPECIFIED FOR FINAL APPROVAL.
15. IF ANY DISCREPANCIES OR OMISSIONS ARE NOTED IN THESE DRAWINGS, CONTACT INTERIOR DESIGNER OR ARCHITECT PRIOR TO ORDERING OR COMMENCING WORK.
16. IT IS THE RESPONSIBILITY OF THE CONTRACTOR TO CHECK LEAD TIMES ON FINISHES IN ORDER TO AVOID DELAYING WORK.
17. ALL CARPET TO BE GRIFFET GRIFFET INSTALLATION WITH RELEASE ADHESIVE PER MANUFACTURER'S INSTRUCTIONS. UNO. CARPET TO BE INSTALLED ON SMOOTH, CLEAN SUBSTRATE USING MINIMUM JOINTS & SEAM. GO TO FINISH MATERIAL SCHEDULES FOR CARPET & SEAM PATTERNS & COLOR. CARPET MAP TO RUN IN SAME DIRECTION AT ALL SEAMS. UNO. CARPET ALL SEAMS TO HAVE HEAVY DUTY SEAM SEALER PER MANUF. RESTRICTIONS. TYP.
18. NOT SHOWN.
19. ALL WALL SURFACE PAINT PER INTERIOR FINISH LEGEND, OVB. CEILING PAINT TO BE PER FINISH & METAL PAINT ON WOOD DOORS TO BE PAINTED SEMI-GLOSS LATEX FINISH. COLOR PER DRAWINGS. ALL HOLLOW METAL DOOR FRAMES TO BE PAINTED WITH SEMI-GLOSS PAINT PER DRAWINGS.
20. UNO ALL OVB. CEILING TO BE PAINTED P1-1.
21. UNO GO TO PROVIDE 1/8" PRIMER COAT & 2" FINISH COATS OF PAINT FOR ALL WALLS.
22. GO TO PROVIDE 1/8" PRIMER COAT (TYP) & 4" FINISH COATS OF PAINT FOR ALL WALLS OR AREAS RECEIVING SATURATED COLOR. GO TO ENSURE ALL TAPE & SPACERS BE SMOOTH AT THESE LOCATIONS.
23. CONTRACTOR TO REPAIR AND REFINISH FINISHES TO MATCH EXISTING FINISHES WHEN SELECTIVE DEMOLITION IS REQUIRED TO CONSTRUCT NEW WALL PARTITIONS OR TO CARRY OUT LIGHTING, MECHANICAL, CEILING AND FIRE ALARM DEVICE MODIFICATIONS.
24. GO TO PROVIDE FLOORING TRANSITION. REFER TO DETAILS ON A-711.
25. RUBBER NOSE/LEAD REFER TO DETAIL ON A-711 AND FINISH SCHEDULES. NOSING TO BE CONTIGUOUS ALONG ENTIRE RISER.
26. PARTICULAR TILE AND PATTERNS FROM LOBBY AREA TO EXTEND INTO CORRIDOR.
27. TERMINATE WITH FULL TILE. GO TO PROVIDE SCHLUTER (OR EQ.) METAL TRIM EDGE PIECE. REFER TO DETAIL ON A-711.
28. REFER TO MANUFACTURER COLOR LAYOUT DRAWING FOR CARPET PATTERN INSTALLATION. REDUCER FROM LBB.
29. CARPET TO BE INSTALLED IN A HERRINGBONE PATTERN USING ANGLE DISTRIBUTION OF CFP-4, CFP-5, AND CFP-6 COLORS TO BE ARRANGED RANDOMLY.

ROOM FINISH TAG LEGEND

ROOM NAME	ROOM NUMBER
CFP-1	CFP-1
CFP-2	CFP-2
CFP-3	CFP-3
CFP-4	CFP-4
CFP-5	CFP-5
CFP-6	CFP-6

NOTE: IF "STR" SHOWN THIS DENOTES EXISTING FINISH TO REMAIN

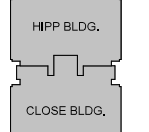
LEGEND

NOT IN CONTRACT	LVF-1
CFP-1	CFP-1
CFP-2	CFP-2
CFP-3	CFP-3
CFP-4	CFP-4
CFP-5	CFP-5
CFP-6	CFP-6

REVISIONS:

No.	Description	Date

KEY PLAN



PROJECT: 2203-18800
DATE: 4/5/19
DRAWN BY: Author
CHECKED BY: Checker

FINISH PLAN - 6TH FLOOR

A-706

INTERIOR FINISH LEGEND

TAG	DESCRIPTION	MANUFACTURER	PATTERN NAME / #	COLOR NAME / #	SIZE	REMARKS
CFP-1	CARPET TILE	MANINGTON COMMERCIAL	ENTANDED COLLECTION MOSSO	KAMALA 14337	36"X24"	HORIZONTAL BRICK ASHLAR INSTALLATION
CFP-2	CARPET TILE	SHAW-SINGER SERIE	WALTONS 805021	WALTONS 805021	18"X36"	MONOCHROME INSTALLATION UNO
CFP-3	CARPET TILE	BENTLEY	SHAW-SINGER 45E14	SC44E 40001	18"X36"	MONOCHROME INSTALLATION UNO
CFP-4	CARPET TILE	BENTLEY	SOUTHER 80203	ECTHEM7 80203	18"X36"	MONOCHROME INSTALLATION UNO
CFP-5	CARPET TILE	BENTLEY	BURNISH 40215	MONO LANE 40203	18"X36"	MONOCHROME INSTALLATION UNO
CFP-6	CARPET TILE	BENTLEY	BURNISH 40215	MONO LANE 40203	36"X24"	MONOCHROME INSTALLATION UNO
CP-1	CEILING TIE-IN TO REMAIN					
CP-1	EPOXY PAINT	SHERWIN WILLIAMS	CREAMT E11 50702-2	SATIN FINISH		PROVIDE 1/8" PRIMER COAT (SHERWIN WILLIAMS MULTIPURPOSE LATEX PRIMER/SEALER) & 2" FINISH COATS OF PRO INDUSTRIAL PRE-CATALYZED WATER BASED EPOXY
CP-2	EPOXY PAINT	SHERWIN WILLIAMS	DOMATON 638 50707	SATIN FINISH		PROVIDE 1/8" PRIMER COAT (SHERWIN WILLIAMS MULTIPURPOSE LATEX PRIMER/SEALER) & 2" FINISH COATS OF PRO INDUSTRIAL PRE-CATALYZED WATER BASED EPOXY
GR-1	GROUT	LATICRETE	CREAMT E11 50702-2	SATIN FINISH	3/8"	ALLEN TILE GROUT JOINTS AT BASE AND FLOOR
GR-2	GROUT	LATICRETE	CREAMT E11 50702-2	SATIN FINISH	3/8"	ALLEN TILE GROUT JOINTS AT BASE AND FLOOR
LV-1	LUXURY VINYL TILE	MANINGTON COMMERCIAL	ANTHOLOGY ABSTRACTED STRE		48"X36"	PROVIDE 1/8" PRIMER COAT (SHERWIN WILLIAMS MULTIPURPOSE LATEX PRIMER/SEALER) & 2" FINISH COATS OF PRO INDUSTRIAL PRE-CATALYZED WATER BASED EPOXY. NO VISIBLE BRUSH MARKS.
LV-2	LUXURY VINYL TILE	MANINGTON COMMERCIAL	SPAGE-STONE		18"X18"	MONOCHROME INSTALLATION
UN-1	UNO WALL PAPER SHADE	ALUMASKER	GALLERY CONCRETE 5555071			SEE DRAWINGS FOR LOCATION
PL-1	PLASTIC LAMINATE	FORMICA	CHOCOLATE WARP 888555- MATTE FINISH			CASEWORK - UPPER AND LOWER CABINETS
PL-2	PLASTIC LAMINATE	FORMICA	WHITE GREYS 888488- MATTE FINISH			CASEWORK - UPPER AND LOWER CABINETS
PL-3	PLASTIC LAMINATE	SHERWIN WILLIAMS	CREAMT E11 50702-2	EGGSHELL FINISH		PROVIDE 1/8" PRIMER COAT (SHERWIN WILLIAMS MULTIPURPOSE LATEX PRIMER/SEALER) & 2" FINISH COATS
PL-4	PLASTIC LAMINATE	SHERWIN WILLIAMS	DOMATON 638 50707	EGGSHELL FINISH		PROVIDE 1/8" PRIMER COAT (SHERWIN WILLIAMS MULTIPURPOSE LATEX PRIMER/SEALER) & 2" FINISH COATS
PL-5	PLASTIC LAMINATE	SHERWIN WILLIAMS	WELD CHERRY 35-43	EGGSHELL FINISH		PROVIDE 1/8" PRIMER COAT (SHERWIN WILLIAMS MULTIPURPOSE LATEX PRIMER/SEALER) & 2" FINISH COATS
PL-6	PLASTIC LAMINATE	SHERWIN WILLIAMS	WELD CHERRY 35-43	EGGSHELL FINISH		PROVIDE 1/8" PRIMER COAT (SHERWIN WILLIAMS MULTIPURPOSE LATEX PRIMER/SEALER) & 2" FINISH COATS
PL-7	PLASTIC LAMINATE	SHERWIN WILLIAMS	WELD CHERRY 35-43	EGGSHELL FINISH		PROVIDE 1/8" PRIMER COAT (SHERWIN WILLIAMS MULTIPURPOSE LATEX PRIMER/SEALER) & 2" FINISH COATS
PL-8	PLASTIC LAMINATE	SHERWIN WILLIAMS	WELD CHERRY 35-43	EGGSHELL FINISH		PROVIDE 1/8" PRIMER COAT (SHERWIN WILLIAMS MULTIPURPOSE LATEX PRIMER/SEALER) & 2" FINISH COATS
PL-9	PLASTIC LAMINATE	SHERWIN WILLIAMS	WELD CHERRY 35-43	EGGSHELL FINISH		PROVIDE 1/8" PRIMER COAT (SHERWIN WILLIAMS MULTIPURPOSE LATEX PRIMER/SEALER) & 2" FINISH COATS
PL-10	PLASTIC LAMINATE	SHERWIN WILLIAMS	WELD CHERRY 35-43	EGGSHELL FINISH		PROVIDE 1/8" PRIMER COAT (SHERWIN WILLIAMS MULTIPURPOSE LATEX PRIMER/SEALER) & 2" FINISH COATS
PL-11	PLASTIC LAMINATE	SHERWIN WILLIAMS	WELD CHERRY 35-43	EGGSHELL FINISH		PROVIDE 1/8" PRIMER COAT (SHERWIN WILLIAMS MULTIPURPOSE LATEX PRIMER/SEALER) & 2" FINISH COATS
PL-12	PLASTIC LAMINATE	SHERWIN WILLIAMS	WELD CHERRY 35-43	EGGSHELL FINISH		PROVIDE 1/8" PRIMER COAT (SHERWIN WILLIAMS MULTIPURPOSE LATEX PRIMER/SEALER) & 2" FINISH COATS
PL-13	PLASTIC LAMINATE	SHERWIN WILLIAMS	WELD CHERRY 35-43	EGGSHELL FINISH		PROVIDE 1/8" PRIMER COAT (SHERWIN WILLIAMS MULTIPURPOSE LATEX PRIMER/SEALER) & 2" FINISH COATS
PL-14	PLASTIC LAMINATE	SHERWIN WILLIAMS	WELD CHERRY 35-43	EGGSHELL FINISH		PROVIDE 1/8" PRIMER COAT (SHERWIN WILLIAMS MULTIPURPOSE LATEX PRIMER/SEALER) & 2" FINISH COATS
PL-15	PLASTIC LAMINATE	SHERWIN WILLIAMS	WELD CHERRY 35-43	EGGSHELL FINISH		PROVIDE 1/8" PRIMER COAT (SHERWIN WILLIAMS MULTIPURPOSE LATEX PRIMER/SEALER) & 2" FINISH COATS
PL-16	PLASTIC LAMINATE	SHERWIN WILLIAMS	WELD CHERRY 35-43	EGGSHELL FINISH		PROVIDE 1/8" PRIMER COAT (SHERWIN WILLIAMS MULTIPURPOSE LATEX PRIMER/SEALER) & 2" FINISH COATS
PL-17	PLASTIC LAMINATE	SHERWIN WILLIAMS	WELD CHERRY 35-43	EGGSHELL FINISH		PROVIDE 1/8" PRIMER COAT (SHERWIN WILLIAMS MULTIPURPOSE LATEX PRIMER/SEALER) & 2" FINISH COATS
PL-18	PLASTIC LAMINATE	SHERWIN WILLIAMS	WELD CHERRY 35-43	EGGSHELL FINISH		PROVIDE 1/8" PRIMER COAT (SHERWIN WILLIAMS MULTIPURPOSE LATEX PRIMER/SEALER) & 2" FINISH COATS
PL-19	PLASTIC LAMINATE	SHERWIN WILLIAMS	WELD CHERRY 35-43	EGGSHELL FINISH		PROVIDE 1/8" PRIMER COAT (SHERWIN WILLIAMS MULTIPURPOSE LATEX PRIMER/SEALER) & 2" FINISH COATS
PL-20	PLASTIC LAMINATE	SHERWIN WILLIAMS	WELD CHERRY 35-43	EGGSHELL FINISH		PROVIDE 1/8" PRIMER COAT (SHERWIN WILLIAMS MULTIPURPOSE LATEX PRIMER/SEALER) & 2" FINISH COATS
PL-21	PLASTIC LAMINATE	SHERWIN WILLIAMS	WELD CHERRY 35-43	EGGSHELL FINISH		PROVIDE 1/8" PRIMER COAT (SHERWIN WILLIAMS MULTIPURPOSE LATEX PRIMER/SEALER) & 2" FINISH COATS
PL-22	PLASTIC LAMINATE	SHERWIN WILLIAMS	WELD CHERRY 35-43	EGGSHELL FINISH		PROVIDE 1/8" PRIMER COAT (SHERWIN WILLIAMS MULTIPURPOSE LATEX PRIMER/SEALER) & 2" FINISH COATS
PL-23	PLASTIC LAMINATE	SHERWIN WILLIAMS	WELD CHERRY 35-43	EGGSHELL FINISH		PROVIDE 1/8" PRIMER COAT (SHERWIN WILLIAMS MULTIPURPOSE LATEX PRIMER/SEALER) & 2" FINISH COATS
PL-24	PLASTIC LAMINATE	SHERWIN WILLIAMS	WELD CHERRY 35-43	EGGSHELL FINISH		PROVIDE 1/8" PRIMER COAT (SHERWIN WILLIAMS MULTIPURPOSE LATEX PRIMER/SEALER) & 2" FINISH COATS
PL-25	PLASTIC LAMINATE	SHERWIN WILLIAMS	WELD CHERRY 35-43	EGGSHELL FINISH		PROVIDE 1/8" PRIMER COAT (SHERWIN WILLIAMS MULTIPURPOSE LATEX PRIMER/SEALER) & 2" FINISH COATS
PL-26	PLASTIC LAMINATE	SHERWIN WILLIAMS	WELD CHERRY 35-43	EGGSHELL FINISH		PROVIDE 1/8" PRIMER COAT (SHERWIN WILLIAMS MULTIPURPOSE LATEX PRIMER/SEALER) & 2" FINISH COATS
PL-27	PLASTIC LAMINATE	SHERWIN WILLIAMS	WELD CHERRY 35-43	EGGSHELL FINISH		PROVIDE 1/8" PRIMER COAT (SHERWIN WILLIAMS MULTIPURPOSE LATEX PRIMER/SEALER) & 2" FINISH COATS
PL-28	PLASTIC LAMINATE	SHERWIN WILLIAMS	WELD CHERRY 35-43	EGGSHELL FINISH		PROVIDE 1/8" PRIMER COAT (SHERWIN WILLIAMS MULTIPURPOSE LATEX PRIMER/SEALER) & 2" FINISH COATS
PL-29	PLASTIC LAMINATE	SHERWIN WILLIAMS	WELD CHERRY 35-43	EGGSHELL FINISH		PROVIDE 1/8" PRIMER COAT (SHERWIN WILLIAMS MULTIPURPOSE LATEX PRIMER/SEALER) & 2" FINISH COATS
PL-30	PLASTIC LAMINATE	SHERWIN WILLIAMS	WELD CHERRY 35-43	EGGSHELL FINISH		PROVIDE 1/8" PRIMER COAT (SHERWIN WILLIAMS MULTIPURPOSE LATEX PRIMER/SEALER) & 2" FINISH COATS
PL-31	PLASTIC LAMINATE	SHERWIN WILLIAMS	WELD CHERRY 35-43	EGGSHELL FINISH		PROVIDE 1/8" PRIMER COAT (SHERWIN WILLIAMS MULTIPURPOSE LATEX PRIMER/SEALER) & 2" FINISH COATS
PL-32	PLASTIC LAMINATE	SHERWIN WILLIAMS	WELD CHERRY 35-43	EGGSHELL FINISH		PROVIDE 1/8" PRIMER COAT (SHERWIN WILLIAMS MULTIPURPOSE LATEX PRIMER/SEALER) & 2" FINISH COATS
PL-33	PLASTIC LAMINATE	SHERWIN WILLIAMS	WELD CHERRY 35-43	EGGSHELL FINISH		PROVIDE 1/8" PRIMER COAT (SHERWIN WILLIAMS MULTIPURPOSE LATEX PRIMER/SEALER) & 2" FINISH COATS
PL-34	PLASTIC LAMINATE	SHERWIN WILLIAMS	WELD CHERRY 35-43	EGGSHELL FINISH		PROVIDE 1/8" PRIMER COAT (SHERWIN WILLIAMS MULTIPURPOSE LATEX PRIMER/SEALER) & 2" FINISH COATS
PL-35	PLASTIC LAMINATE	SHERWIN WILLIAMS	WELD CHERRY 35-43	EGGSHELL FINISH		PROVIDE 1/8" PRIMER COAT (SHERWIN WILLIAMS MULTIPURPOSE LATEX PRIMER/SEALER) & 2" FINISH COATS
PL-36	PLASTIC LAMINATE	SHERWIN WILLIAMS	WELD CHERRY 35-43	EGGSHELL FINISH		PROVIDE 1/8" PRIMER COAT (SHERWIN WILLIAMS MULTIPURPOSE LATEX PRIMER/SEALER) & 2" FINISH COATS
PL-37	PLASTIC LAMINATE	SHERWIN WILLIAMS	WELD CHERRY 35-43	EGGSHELL FINISH		PROVIDE 1/8" PRIMER COAT (SHERWIN WILLIAMS MULTIPURPOSE LATEX PRIMER/SEALER) & 2" FINISH COATS
PL-38	PLASTIC LAMINATE	SHERWIN WILLIAMS	WELD CHERRY 35-43	EGGSHELL FINISH		PROVIDE 1/8" PRIMER COAT (SHERWIN WILLIAMS MULTIPURPOSE LATEX PRIMER/SEALER) & 2" FINISH COATS
PL-39	PLASTIC LAMINATE	SHERWIN WILLIAMS	WELD CHERRY 35-43	EGGSHELL FINISH		PROVIDE 1/8" PRIMER COAT (SHERWIN WILLIAMS MULTIPURPOSE LATEX PRIMER/SEALER) & 2" FINISH COATS
PL-40	PLASTIC LAMINATE	SHERWIN WILLIAMS	WELD CHERRY 35-43	EGGSHELL FINISH		PROVIDE 1/8" PRIMER COAT (SHERWIN WILLIAMS MULTIPURPOSE LATEX PRIMER/SEALER) & 2" FINISH COATS
PL-41	PLASTIC LAMINATE	SHERWIN WILLIAMS	WELD CHERRY 35-43	EGGSHELL FINISH		PROVIDE 1/8" PRIMER COAT (SHERWIN WILLIAMS MULTIPURPOSE LATEX PRIMER/SEALER) & 2" FINISH COATS
PL-42	PLASTIC LAMINATE	SHERWIN WILLIAMS	WELD CHERRY 35-43	EGGSHELL FINISH		PROVIDE 1/8" PRIMER COAT (SHERWIN WILLIAMS MULTIPURPOSE LATEX PRIMER/SEALER) & 2" FINISH COATS
PL-43	PLASTIC LAMINATE	SHERWIN WILLIAMS	WELD CHERRY 35-43	EGGSHELL FINISH		PROVIDE 1/8" PRIMER COAT (SHERWIN WILLIAMS MULTIPURPOSE LATEX PRIMER/SEALER) & 2" FINISH COATS
PL-44	PLASTIC LAMINATE	SHERWIN WILLIAMS	WELD CHERRY 35-43	EGGSHELL FINISH		PROVIDE 1/8" PRIMER COAT (SHERWIN WILLIAMS MULTIPURPOSE LATEX PRIMER/SEALER) & 2" FINISH COATS
PL-45	PLASTIC LAMINATE	SHERWIN WILLIAMS	WELD CHERRY 35-43	EGGSHELL FINISH		PROVIDE 1/8" PRIMER COAT (SHERWIN WILLIAMS MULTIPURPOSE LATEX PRIMER/SEALER) & 2" FINISH COATS
PL-46	PLASTIC LAMINATE	SHERWIN WILLIAMS	WELD CHERRY 35-43	EGGSHELL FINISH		PROVIDE 1/8" PRIMER COAT (SHERWIN WILLIAMS MULTIPURPOSE LATEX PRIMER/SEALER) & 2" FINISH COATS
PL-47	PLASTIC LAMINATE	SHERWIN WILLIAMS	WELD CHERRY 35-43	EGGSHELL FINISH		PROVIDE 1/8" PRIMER COAT (SHERWIN WILLIAMS MULTIPURPOSE LATEX PRIMER/SEALER) & 2" FINISH COATS
PL-48	PLASTIC LAMINATE	SHERWIN WILLIAMS	WELD CHERRY 35-43	EGGSHELL FINISH		PROVIDE 1/8" PRIMER COAT (SHERWIN WILLIAMS MULTIPURPOSE LATEX PRIMER/SEALER) & 2" FINISH COATS
PL-49	PLASTIC LAMINATE	SHERWIN WILLIAMS	WELD CHERRY 35-43	EGGSHELL FINISH		PROVIDE 1/8" PRIMER COAT (SHERWIN WILLIAMS MULTIPURPOSE LATEX PRIMER/SEALER) & 2" FINISH COATS
PL-50	PLASTIC LAMINATE	SHERWIN WILLIAMS	WELD CHERRY 35-43	EGGSHELL FINISH		PROVIDE 1/8" PRIMER COAT (SHERWIN WILLIAMS MULTIPURPOSE LATEX PRIMER/SEALER) & 2" FINISH COATS
PL-51	PLASTIC LAMINATE	SHERWIN WILLIAMS	WELD CHERRY 35-43	EGGSHELL FINISH		PROVIDE 1/8" PRIMER COAT (SHERWIN WILLIAMS MULTIPURPOSE LATEX PRIMER/SEALER) & 2" FINISH COATS
PL-52	PLASTIC LAMINATE	SHERWIN WILLIAMS	WELD CHERRY 35-43	EGGSHELL FINISH		PROVIDE 1/8" PRIMER COAT (SHERWIN WILLIAMS MULTIPURPOSE LATEX PRIMER/SEALER) & 2" FINISH COATS
PL-53	PLASTIC LAMINATE	SHERWIN WILLIAMS	WELD CHERRY 35-43	EGGSHELL FINISH		PROVIDE 1/8" PRIMER COAT (SHERWIN WILLIAMS MULTIPURPOSE LATEX PRIMER/SEALER) & 2" FINISH COATS
PL-54	PLASTIC LAMINATE	SHERWIN WILLIAMS	WELD CHERRY 35-43	EGGSHELL FINISH		PROVIDE 1/8" PRIMER COAT (SHERWIN WILLIAMS MULTIPURPOSE LATEX PRIMER/SEALER) & 2" FINISH COATS
PL-55	PLASTIC LAMINATE	SHERWIN WILLIAMS	WELD CHERRY 35-43	EGGSHELL FINISH		PROVIDE 1/8" PRIMER COAT (SHERWIN WILLIAMS MULTIPURPOSE LATEX PRIMER/SEALER) & 2" FINISH COATS
PL-56	PLASTIC LAMINATE	SHERWIN WILLIAMS	WELD CHERRY 35-43	EGGSHELL FINISH		PROVIDE 1/8" PRIMER COAT (SHERWIN WILLIAMS MULTIPURPOSE LATEX PRIMER/SEALER) & 2" FINISH COATS
PL-57	PLASTIC LAMINATE	SHERWIN WILLIAMS	WELD CHERRY 35-43	EGGSHELL FINISH		PROVIDE 1/8" PRIMER COAT (SHERWIN WILLIAMS MULTIPURPOSE LATEX PRIMER/SEALER) & 2" FINISH COATS
PL-58	PLASTIC LAMINATE	SHERWIN WILLIAMS	WELD CHERRY 35-43	EGGSHELL FINISH		PROVIDE 1/8" PRIMER COAT (SHERWIN WILLIAMS MULTIPURPOSE LATEX PRIMER/SEALER) & 2" FINISH COATS
PL-59	PLASTIC LAMINATE	SHERWIN WILLIAMS	WELD CHERRY 35-43	EGGSHELL FINISH		PROVIDE 1/8" PRIMER COAT (SHERWIN WILLIAMS MULTIPURPOSE LATEX PRIMER/SEALER) & 2" FINISH COATS
PL-60	PLASTIC LAMINATE	SHERWIN WILLIAMS	WELD CHERRY 35-43	EGGSHELL FINISH		PROVIDE 1/8" PRIMER COAT (SHERWIN WILLIAMS MULTIPURPOSE LATEX PRIMER/SEALER) & 2" FINISH COATS
PL-61	PLASTIC LAMINATE	SHERWIN WILLIAMS	WELD CHERRY 35-43	EGGSHELL FINISH		PROVIDE 1/8" PRIMER COAT (SHERWIN WILLIAMS MULTIPURPOSE LATEX PRIMER/SEALER) & 2" FINISH COATS
PL-62	PLASTIC LAMINATE	SHERWIN WILLIAMS	WELD CHERRY 35-43	EGGSHELL FINISH		PROVIDE 1/8" PRIMER COAT (SHERWIN WILLIAMS MULTIPURPOSE LATEX PRIMER/SEALER) & 2" FINISH COATS
PL-63	PLASTIC LAMINATE	SHERWIN WILLIAMS	WELD CHERRY 35-43	EGGSHELL FINISH		PROVIDE 1/8" PRIMER COAT (SHERWIN WILLIAMS MULTIPURPOSE LATEX PRIMER/SEALER) & 2" FINISH COATS
PL-64	PLASTIC LAMINATE	SHERWIN WILLIAMS	WELD CHERRY 35-43	EGGSHELL FINISH		PROVIDE 1/8" PRIMER COAT (SHERWIN WILLIAMS MULTIPURPOSE LATEX PRIMER/SEALER) & 2" FINISH COATS
PL-65	PLASTIC LAMINATE	SHERWIN WILLIAMS	WELD CHERRY 35-43	EGGSHELL FINISH		PROVIDE 1/8" PRIMER COAT (SHERWIN WILLIAMS MULTIPURPOSE LATEX PRIMER/SEALER) & 2" FINISH COATS

GENERAL NOTES:

1. PRIOR TO INSTALLATION AND FABRICATION, CONTRACTOR SHALL COORDINATE WITH ARCHITECT AND INTERIOR DESIGNER TO REVIEW ALL FLOOR PATTERNS, FINISHES AND DOCUMENTATION INFORMATION.
2. PRIOR TO PRIME COAT PRIMER, CONTRACTOR SHALL SUBMIT TO ARCHITECT/INTERIOR DESIGNER EACH PART COLOR FINISH ON A 1/2" X 1/4" SHEET OF GRAPHIC BOARD FOR PRELIMINARY APPROVAL. FOR FINAL APPROVAL BY OWNER AND ARCHITECT PRIOR TO PAINTING, THE PAINTING CONTRACTOR SHALL PAINT EACH PART COLOR WITH THE DISCREETED FINISH ON A 4" X 4" PIECE OF GYPSUM BOARD. SAMPLE BOARDS SHALL BE REVIEWED AND APPROVED AT THE JOBSITE WITH THE APPROPRIATE LEAD TIME.
3. INSTALLERS OF EACH FINISH MATERIAL SHALL RESPECT BOTH THE SUBSTRATE AND CONDITIONS UNDER WHICH WORK IS TO BE PERFORMED. INSTALLER SHALL NOT PROCEED UNLESS MANUFACTURER'S CONDITIONS HAVE BEEN CORRECTED TO AN ACCEPTABLE MANNER TO ALL PARTS AND MEET ALL MANUFACTURER'S REQUIREMENTS.
4. ALL INTERIOR FINISHES SHALL COMPLY WITH SECTION 03.01 OF RESTRICTIONS OF COMBUSTIBLE MATERIALS OF THE INTERNATIONAL BUILDING CODE. ALL INTERIOR FINISHES SHALL BE CLASS A OR BETTER.
5. THE INTENT IS TO PROVIDE A COMPLETE INTERIOR FINISH WHETHER OR NOT SPECIFICALLY INDICATED. FINISH SHALL BE FINISHED AND/OR PAINTED AS DIRECTED BY DESIGNER, WHETHER OR NOT SPECIFICALLY SCHEDULED OR INDICATED ON DRAWINGS.
6. CONTRACTOR SHALL SUBMIT AND/OR SUPPLEMENT SHOP DRAWINGS FOR ALL AREAS SPECIFIED TO RECEIVE CARPET FLOORING PRIOR TO COMMENCEMENT OF WORK.
7. PAINT ALL EXPOSED AND FINISH EXPOSED WOOD BLOCKINGS AND METAL SUPPORTS TO MATCH ADJACENT SURFACES. COORDINATE WITH INTERIOR DESIGNER.
8. PAINTED FINISH ON METAL SURFACES SHALL BE SMOOTH, CLEAR AND FREE OF ALL BRUSH MARKS.
9. GO TO INSTALL RUBBER REDUCER STRIP AT ALL FLOOR FINISH TRANSITIONS AND SCHEDULES (OR EQUAL METAL TRANSFER STRIP AT THE LOCATION) REFER TO DETAILS ON A-711.
10. PAINT METAL WALL-MOUNTED ACCESS DOORS, GRILLES, RETURN AIR GRILLES, COVER PLATES, PAN COIL UNITS, FIRE EQUIPMENT CABINETS, AND ELECTRICAL PANELS TO MATCH ADJACENT SURFACE UNLESS OTHERWISE NOTED.
11. ALL FLOOR FINISH CHANGES SHALL OCCUR AT THE CENTER LINE OF CLOSED DOORS.
12. FLOOR PATTERNS TO CONTINUE THROUGH ALL OPEN WOODWORK SURFACES.
13. FLOORING CONTRACTOR SHALL MAKE ADJUSTMENTS TO ACCOMMODATE FOR ANY DEFICIENCIES BY THE FIELD HISTORY OF THE CARPET.
14. PRIOR TO ORDERING, SUB-CONTRACTORS FOR FLOORING, PAINTING, AND MECHANICAL SHALL SUBMIT TO ARCHITECT/INTERIOR DESIGNER AN 8" X 8" SAMPLE OF EACH MATERIAL SPECIFIED FOR FINAL APPROVAL.
15. IF ANY DISCREPANCIES OR OMISSIONS ARE NOTICED IN THESE DRAWINGS, CONTACT INTERIOR DESIGNER OR ARCHITECT PRIOR TO ORDERING OR COMMENCING WORK.
16. IT IS THE RESPONSIBILITY OF THE CONTRACTOR TO CHECK LEAD TIMES ON FINISHES IN ORDER TO AVOID DELAYING WORK.
17. INSTALL TO USE PROPER LEVELING SPACERS IN ORDER TO OBTAIN CORN JOINT SET SPECIFIED BY ARCHITECT OR INTERIOR DESIGNER.
18. ALL CARPET TO BE GRIFFET SLIP-DOWN INSTALLATION WITH RELEASE ADHESIVE PER MANUFACTURER'S INSTRUCTIONS. UNO. CARPET TO BE INSTALLED ON SMOOTH, CLEAN SUBSTRATE USING MINIMUM JOINTS & SEAM. GO TO ENGINEER DRAWING 202-0001 FOR CARPET LAYOUT PATTERNS & COLOR. CARPET MAP TO BE REVIEWED AND APPROVED AT ALL SEAM/JOINT LOCATIONS. ALL SEAMS TO HAVE HEAVY DUTY SEAM SEALER PER MANUF. RESTRICTIONS. TYP.
19. NOT USED.
20. ALL WALL SURFACE PAINT PER INTERIOR FINISH LEGEND, OVER CEILING PAINT TO BE FAN-FINISH & METAL PAINT OVER WOOD DOORS TO BE PAINTED SEMI-GLOSS LATEX FINISH. COLOR PER DRAWINGS. ALL HOLLOW METAL DOOR FRAMES TO BE PAINTED WITH SEMI-GLOSS PAINT PER DRAWINGS.
21. UNO ALL OVER CEILING TO BE PAINTED PP-1.
22. UNO GO TO PROVIDE 1 (PRIMER COAT) & 2 (FINISH COATS) OF PAINT FOR ALL WALLS.
23. UNO GO TO PROVIDE 1 (PRIMER COAT) (ITEM 8.4) FINISH COATS OF PAINT FOR ALL WALLS OR AREAS RECEIVING SATURATED COLOR. GO TO ENSURE ALL TAPE & SPACERS BE SMOOTH AT THESE LOCATIONS.
24. CONTRACTOR TO REPAIR AND REFINISH FINISHES TO MATCH EXISTING FINISHES WHEN SELECTIVE DEMOLITION IS REQUIRED TO CONSTRUCT NEW WALL PARTITIONS OR TO CARRY OUT LIGHTING, MECHANICAL, CEILING AND FIRE ALARM DEVICE MODIFICATIONS.
25. GO TO PROVIDE FLOORING TRANSITION. REFER TO DETAILS ON A-711.
26. RUBBER REDUCER REFER TO DETAIL ON A-711 AND FINISH SCHEDULES NOTING TO BE CONTIGUOUS ALONG ENTIRE RISER.
27. REMOVE TILE AND PATTERNS FROM LOBBY AREA TO EXTEND INTO CORRIDOR.
28. TERMINATE WITH FULL TILE. GO TO PROVIDE SCHEDULE (OR EQ.) METAL TRIM EDGE PIECE REFER TO DETAIL ON A-711.
29. REFER TO MANUFACTURER COLOR LAYOUT DRAWING FOR CARPET PATTERN INSTALLATION, REDUCER FROM LSP.
30. CARPET TO BE INSTALLED IN A HERRINGBONE PATTERN USING AN EQUAL DISTRIBUTION OF CPT-4, CPT-5, AND CPT-6 COLORS TO BE ARRANGED RANDOMLY.

ROOM FINISH TAG LEGEND

ROOM NAME	ROOM NUMBER
CSD	CPT-1
PT-1	RSB-1
PT-2	RSB-4
PT-3	CPT-2
PT-4	CPT-3
PT-5	CPT-4
PT-6	CPT-5
PT-7	CPT-6

NOTE: ETR SHOWS THE DENOTES EXISTING FINISH TO REMAIN

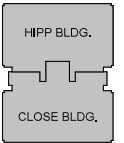
LEGEND

NOT IN CONTRACT	LEVEL
PT-1	PT-1
PT-2	PT-2
PT-3	PT-3
PT-4	PT-4
PT-5	PT-5
PT-6	PT-6
PT-7	PT-7

REVISIONS:

No.	Description	Date

KEY PLAN



PROJECT: 2004-18800

DATE: 4/5/19

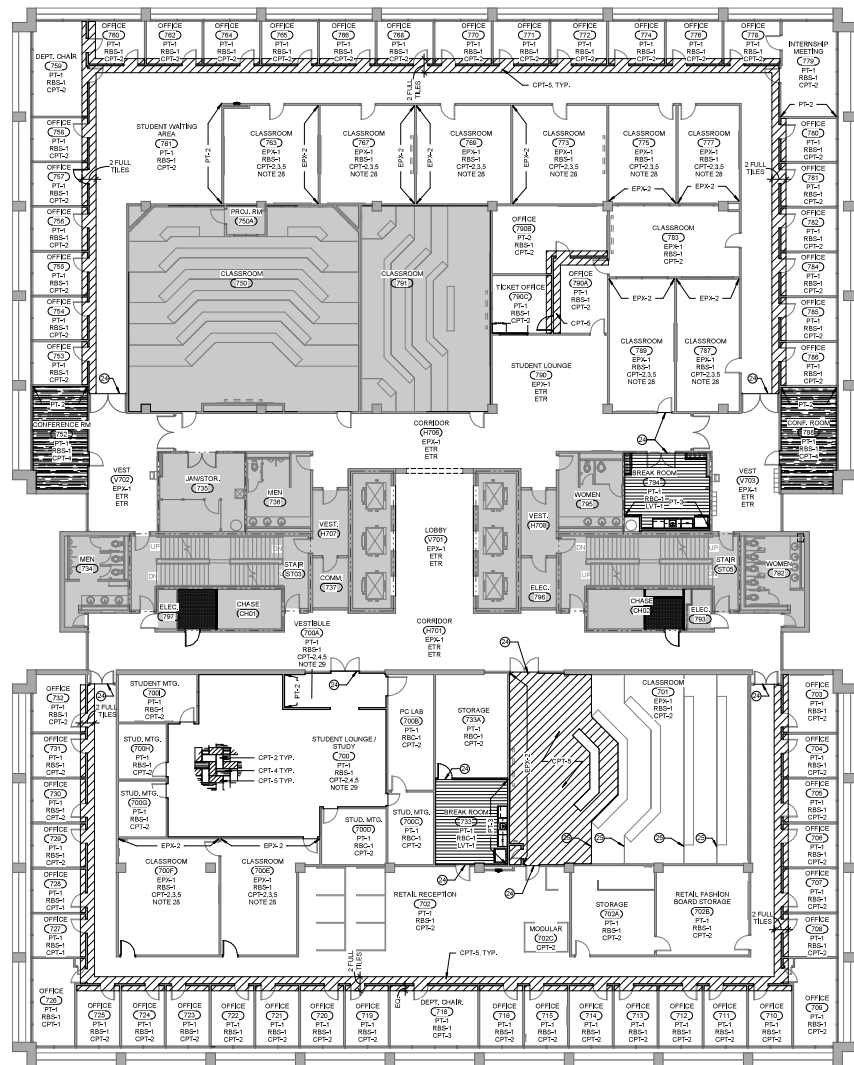
DRAWN BY: Austin

CHECKED BY: Chaker

FINISH PLAN - 7TH FLOOR

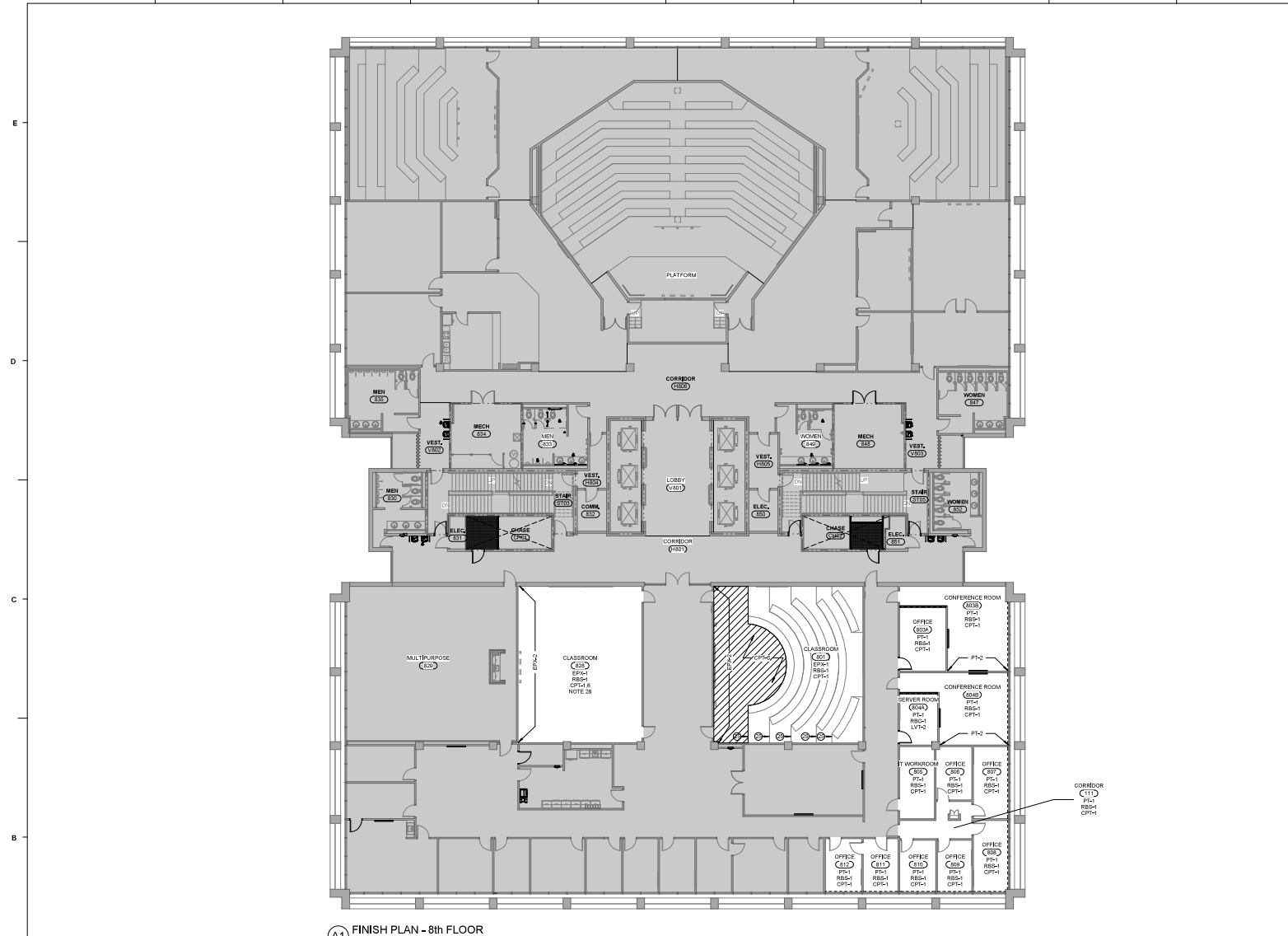
A-707

A1 FINISH PLAN - 7th FLOOR
3522 - 1-21



'INTERIOR FINISH LEGEND

TAG	DESCRIPTION	MANUFACTURER	PATTERN NAME / #	COLOR NAME / #	SIZE	REMARKS
CPT-1	CARPET TILE	MANNINGTON COMMERCIAL	ENTHUSIAST COLLECTION M2550	KAMALA 14337	24x24"	HORIZONTAL BRICK ASH LAR INSTALLATION
CPT-2	CARPET TILE	BENTLEY	SHARSHETER 46814	540000000	12x36"	MONOTONIC INSTALLATION UNO
CPT-3	CARPET TILE	BENTLEY	OUTLIER 50203	EXTREME 421861	12x36"	MONOTONIC INSTALLATION UNO
CPT-4	CARPET TILE	BENTLEY	BURNISH 48715	MOMO LAKE 40203	12x36"	MONOTONIC INSTALLATION UNO
CPT-5	CARPET TILE	BENTLEY	BURNISH 48715	MOMO LAKE 40203	24x24"	MONOTONIC INSTALLATION UNO
ETR	EXISTING FINISH TO REMAIN					
EP-1	EPOXY PAINT	SHERWIN WILLIAMS		CREAMY EIT 5W932 - SATIN FINISH		PROVIDE 1 (PRIMER COAT) (SHERWIN WILLIAMS MULTIPURPOSE LATEX PRIMER/SEALER) & 2 (FINISH COATS) OF PRO INDUSTRIAL PRE-CATALYZED WATER BASED EPOXY
EP-2	EPOXY PAINT	SHERWIN WILLIAMS		OSMO GRAY E83 509074 - SATIN FINISH		PROVIDE 1 (PRIMER COAT) (SHERWIN WILLIAMS MULTIPURPOSE LATEX PRIMER/SEALER) & 2 (FINISH COATS) OF PRO INDUSTRIAL PRE-CATALYZED WATER BASED EPOXY
GR-1	GROUT	LATICRETE		ALBA TILE GROUT JOINTS AT BASE AND FLOOR	5/16"	PROVIDE 1 (PRIMER COAT) (SHERWIN WILLIAMS MULTIPURPOSE LATEX PRIMER/SEALER) & 2 (FINISH COATS) OF PRO INDUSTRIAL PRE-CATALYZED WATER BASED EPOXY
HR-1	HOLLOW METAL FRAME			CREAMY EIT 5W932 - SEMI-GLOSS FINISH		PROVIDE 1 (PRIMER COAT) (SHERWIN WILLIAMS MULTIPURPOSE LATEX PRIMER/SEALER) & 2 (FINISH COATS) OF PRO INDUSTRIAL PRE-CATALYZED WATER BASED EPOXY
CPT-5	CARPET TILE	MANNINGTON COMMERCIAL	ANTHOLOGY ABSTRACTED STRIE		12x36"	MONOTONIC INSTALLATION UNO
CPT-6	CARPET TILE	MANNINGTON COMMERCIAL	LUXURY WHITE TILE	SPACER - STONE	12x36"	MONOTONIC INSTALLATION UNO
HR-2	HOLLOW METAL FRAME			ALUMINUM		SEE DRAWINGS FOR LOCATION
HR-3	HOLLOW METAL FRAME	FORMICA	CHOCOLATE WARP 984242 - MATTE FINISH		2"	CASEWORK - UPPER AND LOWER CABINETS
HR-4	HOLLOW METAL FRAME	FORMICA	WHITE GREY 984242 - MATTE FINISH		2"	CASEWORK - UPPER AND LOWER CABINETS
PT-1	PAINT	SHERWIN WILLIAMS	CREAMY EIT 5W932 - EGGSHELL FINISH			PROVIDE 1 (PRIMER COAT) (SHERWIN WILLIAMS MULTIPURPOSE LATEX PRIMER/SEALER) & 2 (FINISH COATS) OF PRO INDUSTRIAL PRE-CATALYZED WATER BASED EPOXY
PT-2	PAINT	SHERWIN WILLIAMS	OSMO GRAY E83 509074 - EGGSHELL FINISH			PROVIDE 1 (PRIMER COAT) (SHERWIN WILLIAMS MULTIPURPOSE LATEX PRIMER/SEALER) & 2 (FINISH COATS) OF PRO INDUSTRIAL PRE-CATALYZED WATER BASED EPOXY
PT-3	PAINT	SHERWIN WILLIAMS	VALD CURRANT 25433 5W935 - EGGSHELL FINISH			PROVIDE 1 (PRIMER COAT) (SHERWIN WILLIAMS MULTIPURPOSE LATEX PRIMER/SEALER) & 2 (FINISH COATS) OF PRO INDUSTRIAL PRE-CATALYZED WATER BASED EPOXY
PT-4	PAINT	SHERWIN WILLIAMS				PROVIDE 1 (PRIMER COAT) (SHERWIN WILLIAMS MULTIPURPOSE LATEX PRIMER/SEALER) & 2 (FINISH COATS) OF PRO INDUSTRIAL PRE-CATALYZED WATER BASED EPOXY
PT-5	PAINT	SHERWIN WILLIAMS				PROVIDE 1 (PRIMER COAT) (SHERWIN WILLIAMS MULTIPURPOSE LATEX PRIMER/SEALER) & 2 (FINISH COATS) OF PRO INDUSTRIAL PRE-CATALYZED WATER BASED EPOXY
PT-6	PAINT	SHERWIN WILLIAMS				PROVIDE 1 (PRIMER COAT) (SHERWIN WILLIAMS MULTIPURPOSE LATEX PRIMER/SEALER) & 2 (FINISH COATS) OF PRO INDUSTRIAL PRE-CATALYZED WATER BASED EPOXY
PT-7	PAINT	SHERWIN WILLIAMS				PROVIDE 1 (PRIMER COAT) (SHERWIN WILLIAMS MULTIPURPOSE LATEX PRIMER/SEALER) & 2 (FINISH COATS) OF PRO INDUSTRIAL PRE-CATALYZED WATER BASED EPOXY
PT-8	PAINT	SHERWIN WILLIAMS				PROVIDE 1 (PRIMER COAT) (SHERWIN WILLIAMS MULTIPURPOSE LATEX PRIMER/SEALER) & 2 (FINISH COATS) OF PRO INDUSTRIAL PRE-CATALYZED WATER BASED EPOXY
PT-9	PAINT	SHERWIN WILLIAMS				PROVIDE 1 (PRIMER COAT) (SHERWIN WILLIAMS MULTIPURPOSE LATEX PRIMER/SEALER) & 2 (FINISH COATS) OF PRO INDUSTRIAL PRE-CATALYZED WATER BASED EPOXY
PT-10	PAINT	SHERWIN WILLIAMS				PROVIDE 1 (PRIMER COAT) (SHERWIN WILLIAMS MULTIPURPOSE LATEX PRIMER/SEALER) & 2 (FINISH COATS) OF PRO INDUSTRIAL PRE-CATALYZED WATER BASED EPOXY
PT-11	PAINT	SHERWIN WILLIAMS				PROVIDE 1 (PRIMER COAT) (SHERWIN WILLIAMS MULTIPURPOSE LATEX PRIMER/SEALER) & 2 (FINISH COATS) OF PRO INDUSTRIAL PRE-CATALYZED WATER BASED EPOXY
PT-12	PAINT	SHERWIN WILLIAMS				PROVIDE 1 (PRIMER COAT) (SHERWIN WILLIAMS MULTIPURPOSE LATEX PRIMER/SEALER) & 2 (FINISH COATS) OF PRO INDUSTRIAL PRE-CATALYZED WATER BASED EPOXY
PT-13	PAINT	SHERWIN WILLIAMS				PROVIDE 1 (PRIMER COAT) (SHERWIN WILLIAMS MULTIPURPOSE LATEX PRIMER/SEALER) & 2 (FINISH COATS) OF PRO INDUSTRIAL PRE-CATALYZED WATER BASED EPOXY
PT-14	PAINT	SHERWIN WILLIAMS				PROVIDE 1 (PRIMER COAT) (SHERWIN WILLIAMS MULTIPURPOSE LATEX PRIMER/SEALER) & 2 (FINISH COATS) OF PRO INDUSTRIAL PRE-CATALYZED WATER BASED EPOXY
PT-15	PAINT	SHERWIN WILLIAMS				PROVIDE 1 (PRIMER COAT) (SHERWIN WILLIAMS MULTIPURPOSE LATEX PRIMER/SEALER) & 2 (FINISH COATS) OF PRO INDUSTRIAL PRE-CATALYZED WATER BASED EPOXY
PT-16	PAINT	SHERWIN WILLIAMS				PROVIDE 1 (PRIMER COAT) (SHERWIN WILLIAMS MULTIPURPOSE LATEX PRIMER/SEALER) & 2 (FINISH COATS) OF PRO INDUSTRIAL PRE-CATALYZED WATER BASED EPOXY
PT-17	PAINT	SHERWIN WILLIAMS				PROVIDE 1 (PRIMER COAT) (SHERWIN WILLIAMS MULTIPURPOSE LATEX PRIMER/SEALER) & 2 (FINISH COATS) OF PRO INDUSTRIAL PRE-CATALYZED WATER BASED EPOXY
PT-18	PAINT	SHERWIN WILLIAMS				PROVIDE 1 (PRIMER COAT) (SHERWIN WILLIAMS MULTIPURPOSE LATEX PRIMER/SEALER) & 2 (FINISH COATS) OF PRO INDUSTRIAL PRE-CATALYZED WATER BASED EPOXY
PT-19	PAINT	SHERWIN WILLIAMS				PROVIDE 1 (PRIMER COAT) (SHERWIN WILLIAMS MULTIPURPOSE LATEX PRIMER/SEALER) & 2 (FINISH COATS) OF PRO INDUSTRIAL PRE-CATALYZED WATER BASED EPOXY
PT-20	PAINT	SHERWIN WILLIAMS				PROVIDE 1 (PRIMER COAT) (SHERWIN WILLIAMS MULTIPURPOSE LATEX PRIMER/SEALER) & 2 (FINISH COATS) OF PRO INDUSTRIAL PRE-CATALYZED WATER BASED EPOXY
PT-21	PAINT	SHERWIN WILLIAMS				PROVIDE 1 (PRIMER COAT) (SHERWIN WILLIAMS MULTIPURPOSE LATEX PRIMER/SEALER) & 2 (FINISH COATS) OF PRO INDUSTRIAL PRE-CATALYZED WATER BASED EPOXY
PT-22	PAINT	SHERWIN WILLIAMS				PROVIDE 1 (PRIMER COAT) (SHERWIN WILLIAMS MULTIPURPOSE LATEX PRIMER/SEALER) & 2 (FINISH COATS) OF PRO INDUSTRIAL PRE-CATALYZED WATER BASED EPOXY
PT-23	PAINT	SHERWIN WILLIAMS				PROVIDE 1 (PRIMER COAT) (SHERWIN WILLIAMS MULTIPURPOSE LATEX PRIMER/SEALER) & 2 (FINISH COATS) OF PRO INDUSTRIAL PRE-CATALYZED WATER BASED EPOXY
PT-24	PAINT	SHERWIN WILLIAMS				PROVIDE 1 (PRIMER COAT) (SHERWIN WILLIAMS MULTIPURPOSE LATEX PRIMER/SEALER) & 2 (FINISH COATS) OF PRO INDUSTRIAL PRE-CATALYZED WATER BASED EPOXY
PT-25	PAINT	SHERWIN WILLIAMS				PROVIDE 1 (PRIMER COAT) (SHERWIN WILLIAMS MULTIPURPOSE LATEX PRIMER/SEALER) & 2 (FINISH COATS) OF PRO INDUSTRIAL PRE-CATALYZED WATER BASED EPOXY
PT-26	PAINT	SHERWIN WILLIAMS				PROVIDE 1 (PRIMER COAT) (SHERWIN WILLIAMS MULTIPURPOSE LATEX PRIMER/SEALER) & 2 (FINISH COATS) OF PRO INDUSTRIAL PRE-CATALYZED WATER BASED EPOXY
PT-27	PAINT	SHERWIN WILLIAMS				PROVIDE 1 (PRIMER COAT) (SHERWIN WILLIAMS MULTIPURPOSE LATEX PRIMER/SEALER) & 2 (FINISH COATS) OF PRO INDUSTRIAL PRE-CATALYZED WATER BASED EPOXY
PT-28	PAINT	SHERWIN WILLIAMS				PROVIDE 1 (PRIMER COAT) (SHERWIN WILLIAMS MULTIPURPOSE LATEX PRIMER/SEALER) & 2 (FINISH COATS) OF PRO INDUSTRIAL PRE-CATALYZED WATER BASED EPOXY
PT-29	PAINT	SHERWIN WILLIAMS				PROVIDE 1 (PRIMER COAT) (SHERWIN WILLIAMS MULTIPURPOSE LATEX PRIMER/SEALER) & 2 (FINISH COATS) OF PRO INDUSTRIAL PRE-CATALYZED WATER BASED EPOXY
PT-30	PAINT	SHERWIN WILLIAMS				PROVIDE 1 (PRIMER COAT) (SHERWIN WILLIAMS MULTIPURPOSE LATEX PRIMER/SEALER) & 2 (FINISH COATS) OF PRO INDUSTRIAL PRE-CATALYZED WATER BASED EPOXY
PT-31	PAINT	SHERWIN WILLIAMS				PROVIDE 1 (PRIMER COAT) (SHERWIN WILLIAMS MULTIPURPOSE LATEX PRIMER/SEALER) & 2 (FINISH COATS) OF PRO INDUSTRIAL PRE-CATALYZED WATER BASED EPOXY
PT-32	PAINT	SHERWIN WILLIAMS				PROVIDE 1 (PRIMER COAT) (SHERWIN WILLIAMS MULTIPURPOSE LATEX PRIMER/SEALER) & 2 (FINISH COATS) OF PRO INDUSTRIAL PRE-CATALYZED WATER BASED EPOXY
PT-33	PAINT	SHERWIN WILLIAMS				PROVIDE 1 (PRIMER COAT) (SHERWIN WILLIAMS MULTIPURPOSE LATEX PRIMER/SEALER) & 2 (FINISH COATS) OF PRO INDUSTRIAL PRE-CATALYZED WATER BASED EPOXY
PT-34	PAINT	SHERWIN WILLIAMS				PROVIDE 1 (PRIMER COAT) (SHERWIN WILLIAMS MULTIPURPOSE LATEX PRIMER/SEALER) & 2 (FINISH COATS) OF PRO INDUSTRIAL PRE-CATALYZED WATER BASED EPOXY
PT-35	PAINT	SHERWIN WILLIAMS				PROVIDE 1 (PRIMER COAT) (SHERWIN WILLIAMS MULTIPURPOSE LATEX PRIMER/SEALER) & 2 (FINISH COATS) OF PRO INDUSTRIAL PRE-CATALYZED WATER BASED EPOXY
PT-36	PAINT	SHERWIN WILLIAMS				PROVIDE 1 (PRIMER COAT) (SHERWIN WILLIAMS MULTIPURPOSE LATEX PRIMER/SEALER) & 2 (FINISH COATS) OF PRO INDUSTRIAL PRE-CATALYZED WATER BASED EPOXY
PT-37	PAINT	SHERWIN WILLIAMS				PROVIDE 1 (PRIMER COAT) (SHERWIN WILLIAMS MULTIPURPOSE LATEX PRIMER/SEALER) & 2 (FINISH COATS) OF PRO INDUSTRIAL PRE-CATALYZED WATER BASED EPOXY
PT-38	PAINT	SHERWIN WILLIAMS				PROVIDE 1 (PRIMER COAT) (SHERWIN WILLIAMS MULTIPURPOSE LATEX PRIMER/SEALER) & 2 (FINISH COATS) OF PRO INDUSTRIAL PRE-CATALYZED WATER BASED EPOXY
PT-39	PAINT	SHERWIN WILLIAMS				PROVIDE 1 (PRIMER COAT) (SHERWIN WILLIAMS MULTIPURPOSE LATEX PRIMER/SEALER) & 2 (FINISH COATS) OF PRO INDUSTRIAL PRE-CATALYZED WATER BASED EPOXY
PT-40	PAINT	SHERWIN WILLIAMS				PROVIDE 1 (PRIMER COAT) (SHERWIN WILLIAMS MULTIPURPOSE LATEX PRIMER/SEALER) & 2 (FINISH COATS) OF PRO INDUSTRIAL PRE-CATALYZED WATER BASED EPOXY
PT-41	PAINT	SHERWIN WILLIAMS				PROVIDE 1 (PRIMER COAT) (SHERWIN WILLIAMS MULTIPURPOSE LATEX PRIMER/SEALER) & 2 (FINISH COATS) OF PRO INDUSTRIAL PRE-CATALYZED WATER BASED EPOXY
PT-42	PAINT	SHERWIN WILLIAMS				PROVIDE 1 (PRIMER COAT) (SHERWIN WILLIAMS MULTIPURPOSE LATEX PRIMER/SEALER) & 2 (FINISH COATS) OF PRO INDUSTRIAL PRE-CATALYZED WATER BASED EPOXY
PT-43	PAINT	SHERWIN WILLIAMS				PROVIDE 1 (PRIMER COAT) (SHERWIN WILLIAMS MULTIPURPOSE LATEX PRIMER/SEALER) & 2 (FINISH COATS) OF PRO INDUSTRIAL PRE-CATALYZED WATER BASED EPOXY
PT-44	PAINT	SHERWIN WILLIAMS				PROVIDE 1 (PRIMER COAT) (SHERWIN WILLIAMS MULTIPURPOSE LATEX PRIMER/SEALER) & 2 (FINISH COATS) OF PRO INDUSTRIAL PRE-CATALYZED WATER BASED EPOXY
PT-45	PAINT	SHERWIN WILLIAMS				PROVIDE 1 (PRIMER COAT) (SHERWIN WILLIAMS MULTIPURPOSE LATEX PRIMER/SEALER) & 2 (FINISH COATS) OF PRO INDUSTRIAL PRE-CATALYZED WATER BASED EPOXY
PT-46	PAINT	SHERWIN WILLIAMS				PROVIDE 1 (PRIMER COAT) (SHERWIN WILLIAMS MULTIPURPOSE LATEX PRIMER/SEALER) & 2 (FINISH COATS) OF PRO INDUSTRIAL PRE-CATALYZED WATER BASED EPOXY
PT-47	PAINT	SHERWIN WILLIAMS				PROVIDE 1 (PRIMER COAT) (SHERWIN WILLIAMS MULTIPURPOSE LATEX PRIMER/SEALER) & 2 (FINISH COATS) OF PRO INDUSTRIAL PRE-CATALYZED WATER BASED EPOXY
PT-48	PAINT	SHERWIN WILLIAMS				PROVIDE 1 (PRIMER COAT) (SHERWIN WILLIAMS MULTIPURPOSE LATEX PRIMER/SEALER) & 2 (FINISH COATS) OF PRO INDUSTRIAL PRE-CATALYZED WATER BASED EPOXY
PT-49	PAINT	SHERWIN WILLIAMS				PROVIDE 1 (PRIMER COAT) (SHERWIN WILLIAMS MULTIPURPOSE LATEX PRIMER/SEALER) & 2 (FINISH COATS) OF PRO INDUSTRIAL PRE-CATALYZED WATER BASED EPOXY
PT-50	PAINT	SHERWIN WILLIAMS				PROVIDE 1 (PRIMER COAT) (SHERWIN WILLIAMS MULTIPURPOSE LATEX PRIMER/SEALER) & 2 (FINISH COATS) OF PRO INDUSTRIAL PRE-CATALYZED WATER BASED EPOXY
PT-51	PAINT	SHERWIN WILLIAMS				PROVIDE 1 (PRIMER COAT) (SHERWIN WILLIAMS MULTIPURPOSE LATEX PRIMER/SEALER) & 2 (FINISH COATS) OF PRO INDUSTRIAL PRE-CATALYZED WATER BASED EPOXY
PT-52	PAINT	SHERWIN WILLIAMS				PROVIDE 1 (PRIMER COAT) (SHERWIN WILLIAMS MULTIPURPOSE LATEX PRIMER/SEALER) & 2 (FINISH COATS) OF PRO INDUSTRIAL PRE-CATALYZED WATER BASED EPOXY
PT-53	PAINT	SHERWIN WILLIAMS				PROVIDE 1 (PRIMER COAT) (SHERWIN WILLIAMS MULTIPURPOSE LATEX PRIMER/SEALER) & 2 (FINISH COATS) OF PRO INDUSTRIAL PRE-CATALYZED WATER BASED EPOXY
PT-54	PAINT	SHERWIN WILLIAMS				PROVIDE 1 (PRIMER COAT) (SHERWIN WILLIAMS MULTIPURPOSE LATEX PRIMER/SEALER) & 2 (FINISH COATS) OF PRO INDUSTRIAL PRE-CATALYZED WATER BASED EPOXY
PT-55	PAINT	SHERWIN WILLIAMS				PROVIDE 1 (PRIMER COAT) (SHERWIN WILLIAMS MULTIPURPOSE LATEX PRIMER/SEALER) & 2 (FINISH COATS) OF PRO INDUSTRIAL PRE-CATALYZED WATER BASED EPOXY
PT-56	PAINT	SHERWIN WILLIAMS				PROVIDE 1 (PRIMER COAT) (SHERWIN WILLIAMS MULTIPURPOSE LATEX PRIMER/SEALER) & 2 (FINISH COATS) OF PRO INDUSTRIAL PRE-CATALYZED WATER BASED EPOXY
PT-57	PAINT	SHERWIN WILLIAMS				PROVIDE 1 (PRIMER COAT) (SHERWIN WILLIAMS MULTIPURPOSE LATEX PRIMER/SEALER) & 2 (FINISH COATS) OF PRO INDUSTRIAL PRE-CATALYZED WATER BASED EPOXY
PT-58	PAINT	SHERWIN WILLIAMS				PROVIDE 1 (PRIMER COAT) (SHERWIN WILLIAMS MULTIPURPOSE LATEX PRIMER/SEALER) & 2 (FINISH COATS) OF PRO INDUSTRIAL PRE-CATALYZED WATER BASED EPOXY
PT-59	PAINT	SHERWIN WILLIAMS				PROVIDE 1 (PRIMER COAT) (SHERWIN WILLIAMS MULTIPURPOSE LATEX PRIMER/SEALER) & 2 (FINISH COATS) OF PRO INDUSTRIAL PRE-CATALYZED WATER BASED EPOXY
PT-60	PAINT	SHERWIN WILLIAMS				PROVIDE 1 (PRIMER COAT) (SHERWIN WILLIAMS MULTIPURPOSE LATEX PRIMER/SEALER) & 2 (FINISH COATS) OF PRO INDUSTRIAL PRE-CATALYZED WATER BASED EPOXY
PT-61	PAINT	SHERWIN WILLIAMS				PROVIDE 1 (PRIMER COAT) (SHERWIN WILLIAMS MULTIPURPOSE LATEX PRIMER/SEALER) & 2 (FINISH COATS) OF PRO INDUSTRIAL PRE-CATALYZED WATER BASED EPOXY
PT-62	PAINT	SHERWIN WILLIAMS				PROVIDE 1 (PRIMER COAT) (SHERWIN WILLIAMS MULTIPURPOSE LATEX PRIMER/SEALER) & 2 (FINISH COATS) OF PRO INDUSTRIAL PRE-CATALYZED WATER BASED EPOXY
PT-63	PAINT	SHERWIN WILLIAMS				PROVIDE 1 (PRIMER COAT) (SHERWIN WILLIAMS MULTIPURPOSE LATEX PRIMER/SEALER) & 2 (FINISH COATS) OF PRO INDUSTRIAL PRE-CATALYZED WATER BASED EPOXY
PT-64	PAINT	SHERWIN WILLIAMS				PROVIDE 1 (PRIMER COAT) (SHERWIN WILLIAMS MULTIPURPOSE LATEX PRIMER/SEALER) & 2 (FINISH COATS) OF PRO INDUSTRIAL PRE-CATALYZED WATER BASED EPOXY
PT-65	PAINT	SHERWIN WILLIAMS				PROVIDE 1 (PRIMER COAT) (SHERWIN WILLIAMS MULTIPURPOSE LATEX PRIMER/SEALER) & 2 (FINISH COATS) OF PRO INDUSTRIAL PRE-CATALYZED WATER BASED EPOXY
PT-66	PAINT	SHERWIN WILLIAMS				PROVIDE 1 (PRIMER COAT) (SHERWIN WILLIAMS MULTIPURPOSE LATEX PRIMER/SEALER) & 2 (FINISH COATS) OF PRO INDUSTRIAL PRE-CATALYZED WATER BASED EPOXY
PT-67	PAINT	SHERWIN WILLIAMS				PROVIDE 1 (PRIMER COAT) (SHERWIN WILLIAMS MULTIPURPOSE LATEX PRIMER/SEALER) & 2 (FINISH COATS) OF PRO INDUSTRIAL PRE-CATALYZED WATER BASED EPOXY
PT-68	PAINT					



A1 FINISH PLAN - 8th FLOOR
3/27 - 1/17

GENERAL NOTES:

- PRIOR TO INSTALLATION AND FABRICATION, CONTRACTOR SHALL COORDINATE WITH ARCHITECT AND INTERIOR DESIGNER TO REVIEW ALL FLOOR PARTINGS, FINISHES AND DOCUMENTATION INFORMATION.
- PRIOR TO CONTRACTOR, FINISHING CONTRACTOR SHALL SUBMIT TO ARCHITECT/INTERIOR DESIGNER EACH PART COLOR FINISH ON A 1/2" X 1/4" SHEET OF GRAPHIC FOR PRELIMINARY APPROVAL. FOR FINAL APPROVAL BY OWNER AND ARCHITECT PRIOR TO PAINTING, THE FINISHING CONTRACTOR SHALL PRINT EACH PART COLOR WITH THE DISCREETED FINISH ON A 4" X 4" PIECE OF GYPSUM BOARD. SAMPLE BOARDS SHALL BE REVIEWED AND APPROVED AT THE JOBSITE WITH THE APPROPRIATE LIGHTING.
- INSTALLERS OF EACH FINISH MATERIAL SHALL INSPECT BOTH THE SUBSTRATE AND CONDITIONS UNDER WHICH WORK IS TO BE PERFORMED. INSTALLER SHALL NOT PROCEED UNTIL UNSATISFACTORY CONDITIONS HAVE BEEN CORRECTED TO AN ACCEPTABLE MANNER TO ALL PARTIES AND MEET ALL MANUFACTURER'S REQUIREMENTS.
- ALL INTERIOR FINISHES SHALL COMPLY WITH SECTION 03.01 OF RESTRICTIONS OF COMBUSTIBLE MATERIALS OF THE INTERNATIONAL BUILDING CODE. ALL INTERIOR FINISHES SHALL BE CLASS A OR BETTER.
- THE RIGHT TO PROVIDE COMPLETE FINISHED INTERIOR FINISHES OR NOT SPECIFICALLY INDICATED, ITEMS SHALL BE FINISHED AND/OR PAINTED AS DIRECTED BY DESIGNER WHETHER OR NOT SPECIFICALLY SCHEDULED OR INDICATED ON DRAWINGS.
- CARPET INSTALLER SHALL SUBMIT LAYOUT/PATTERN SHOP DRAWING FOR ALL AREAS SPECIFIED TO RECEIVE CARPET FLOORING PRIOR TO COMMENCEMENT OF WORK.
- PAINT ALL EXPOSED AND SEMI-EXPOSED WOOD BLOCKS AND METAL SUPPORTS TO MATCH ADJACENT SURFACES. COORDINATE WITH INTERIOR DESIGNER.
- PAINTED FINISH ON METAL SURFACES SHALL BE SMOOTH, CLEAR AND FREE OF ALL BRUSH MARKS.
- GC TO INSTALL RUBBER REDUCER STRIP AT ALL FLOOR FINISH TRANSITIONS AND SCHEDULERS (OR EQUAL METAL TRANSFER STRIP AT THE LOCATION) HERE TO DETAILS ON A-711.
- PAINT METAL WALL-MOUNTED ACCESS DOORS, GRILLES, RETURN AIR GRILLES, COVER PLATES, PAN COL UNITS FIRE EQUIPMENT CABINETS, AND ELECTRICAL SCHEDULERS TO MATCH ADJACENT SURFACE UNLESS OTHERWISE NOTED.
- ALL FLOOR FINISH CHANGES SHALL OCCUR AT THE CENTER LINE OF CLOSED DOORS.
- FLOOR MATTER TO CONTINUE UNDER ALL OPEN WOODWORK WORKSPACES.
- FLOORING CONTRACTOR SHALL MAKE ADJUSTMENTS TO ACCOMMODATE FOR ANY DIFFERENCES IN THE FLOOR FINISH OF THE CARPET.
- PRIOR TO ORDERING, SUB-CONTRACTORS FOR FLOORING, PAINTING, AND MECHANICAL SHALL SUBMIT TO ARCHITECT/DESIGNER AN 8" X 8" SAMPLE OF EACH MATERIAL SPECIFIED FOR FINAL APPROVAL.
- IF ANY DISCREPANCIES OR OMISSIONS ARE NOTED IN THESE DRAWINGS, CONTACT INTERIOR DESIGNER OR ARCHITECT PRIOR TO ORDERING OR COMMENCEMENT OF WORK.
- IT IS THE RESPONSIBILITY OF THE CONTRACTOR TO CHECK LEAD TIMES ON FINISHES IN ORDER TO AVOID DELAYING WORK.
- INSTALLER TO USE PROPER LEVELING SPACERS IN ORDER TO OBTAIN GROUT JOINT SIZE SPECIFIED BY ARCHITECT OR INTERIOR DESIGNER.
- ALL CARPET TO BE GROUT GULF-DOWN INSTALLATION WITH RELEASE ADHESIVE PER MANUFACTURER'S INSTRUCTIONS. UNDO CARPET TO BE INSTALLED ON SMOOTH, CLEAN SUBSTRATE USING MINIMUM JOINTS & SEAM. GC TO ENSURE MATCHING OF CARPET IN SAME PATTERN & COLOR. CARPET MAP TO RUN IN SAME DIRECTION AT ALL SEAMS/JOINTS. ALL SEAMS TO HAVE HEAVY DUTY SEAM SEALER PER MANUF. RESTRICTIONS, TYP.
18. NOT USED.
19. ALL WALL SURFACE PAINT PER INTERIOR FINISH LEGEND, OVER CEILING PAINT TO BE FLAT FINISH & METAL PAINT ON WOOD DOORS TO BE PAINTED SEMI-GLOSS LATEX FINISH. COLOR PER DRAWINGS. ALL HOLLOW METAL DOOR FRAMES TO BE PAINTED WITH SEMI-GLOSS PAINT PER DRAWINGS.
20. UNDO ALL GIVE CEILING TO BE PAINTED P1-1.
21. UNDO TO PROVIDE (1) PRIMER COAT & (2) FINISH COATS OF PAINT FOR ALL WALLS.
22. UNDO TO PROVIDE (1) PRIMER COAT (ITEMS 8 & 14) FINISH COATS OF PAINT FOR ALL WALLS OR AREAS RECEIVING SATURATED COLOR. GC TO ENSURE ALL TAPE & SPACERS BE SMOOTH AT THESE LOCATIONS.
23. CONTRACTOR TO REPAIR AND REFINISH MATERIALS TO MATCH EXISTING FINISHES WHEN SELECTIVE DEMOLITION IS REQUIRED TO CONSTRUCT NEW WALL PARTITIONS OR TO CARRY OUT LIGHTING, MECHANICAL, CEILING AND FIRE ALARM DEVICE REWORK/REPAIR.
24. GC TO PROVIDE FLOORING TRANSITION. REFER TO DETAILS ON A-711.
25. RUBBER NOSE/LEAD REFER TO DETAIL ON A-711 AND FINISH SCHEDULE. NOSING TO BE CONTIGUOUS ALONG ENTIRE RISER.
26. POINT UP TILE AND PATTERN FROM LOBBY AREA TO EXTEND INTO CORRIDOR.
27. TERMINATE WITH FULL TILE. GC TO PROVIDE SCHEDULER (OR EQL) METAL TRIM EDGE PIECE. REFER TO DETAIL ON A-711.
28. REFER TO MANUFACTURER COLOR LAYOUT DRAWING FOR CARPET PATTERN.
29. CARPET TO BE INSTALLED IN A HERRINGBONE PATTERN USING EQUAL DISTRIBUTION OF CPICL, CPFL, AND CPFS. COLORS TO BE ARRANGED RANDOMLY.

ROOM FINISH TAG LEGEND

ROOM NAME	ROOM NAME
CEILING	ROOM NUMBER
WALL	WALL MATERIAL CODE
FLOOR	BASE MATERIAL CODE
DOOR	FLOOR MATERIAL CODE
1, 2, 3	ROOM FINISH NOTES

NOTE: IF 'ETR' SHOWN THIS DENOTES EXISTING FINISH TO RETAIN

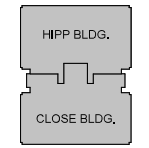
LEGEND

NOT IN CONTRACT	LEVEL
FF-1	FF-2
FF-3	FF-4
CP-1	CP-2
CP-3	CP-4

REVISIONS:

No.	Description	Date
-----	-------------	------

KEY PLAN



TAG	DESCRIPTION	MANUFACTURER	PATTERN NAME / #	COLOR NAME / #	SIZE	REMARKS
CP-1	CARPET TILE	MANANNATION COMMERCIAL	ENTWINE COLLECTION MOSSO	KAMILLA 1437	24"x24"	HORIZONTAL BRICK ASHUR INSTALLATION
CP-2	CARPET TILE	BENTLEY	SWAPES/SPETER GERT4	WATSON/MA 40051	18"x36"	DIAGONAL INSTALLATION UNDO
CP-3	CARPET TILE	BENTLEY	OUTLER 80023	EXTREMITY 80168	18"x36"	DIAGONAL INSTALLATION UNDO
CP-4	CARPET TILE	BENTLEY	BURNISH WHITE	MONO LAKE 40262	18"x36"	DIAGONAL INSTALLATION UNDO
CP-5	CARPET TILE	BENTLEY	BURNISH WHITE	MONO LAKE 40262	24"x24"	DIAGONAL INSTALLATION UNDO
EP-1	EPOXY PAINT	SHERWIN WILLIAMS		CREAMY EIT 20V712 - SATIN FINISH		PROVIDE (1) PRIMER COAT (SHERWIN WILLIAMS MULTIPURPOSE LATEX PRIMER/SEALER) & (2) FINISH COATS OF PRO INDUSTRIAL PRECATALYZED WATER BASED EPOXY
EP-2	EPOXY PAINT	SHERWIN WILLIAMS		CREAMY EIT 20V712 - SATIN FINISH		PROVIDE (1) PRIMER COAT (SHERWIN WILLIAMS MULTIPURPOSE LATEX PRIMER/SEALER) & (2) FINISH COATS OF PRO INDUSTRIAL PRECATALYZED WATER BASED EPOXY
GL-1	GROUT	LATERITE		78 STERLING SILVER	3/16"	ALLEN TILE GROUT JOINTS AT BASE AND FLOOR
GL-2	POLYURETHANAL FENNE			ANTHOLOGY ABSTRACTED STRIE		PROVIDE (1) PRIMER COAT (SHERWIN WILLIAMS MULTIPURPOSE LATEX PRIMER/SEALER) & (2) FINISH COATS OF PRO INDUSTRIAL PRECATALYZED WATER BASED EPOXY. NO VERBSE BRUSH MARKS
GL-3	LUXURY VINYL TILE	MANANNATION COMMERCIAL		CREAMY EIT 20V712 - SATIN FINISH		PROVIDE (1) PRIMER COAT (SHERWIN WILLIAMS MULTIPURPOSE LATEX PRIMER/SEALER) & (2) FINISH COATS OF PRO INDUSTRIAL PRECATALYZED WATER BASED EPOXY
LV-2	LUXURY VINYL TILE	MANANNATION COMMERCIAL		SPARKLE-STONE		PROVIDE (1) PRIMER COAT (SHERWIN WILLIAMS MULTIPURPOSE LATEX PRIMER/SEALER) & (2) FINISH COATS OF PRO INDUSTRIAL PRECATALYZED WATER BASED EPOXY
MS-1	MOLAR ROLLER SHADE	FORMICA		GALLERY CONCRETE 5558301	18"x18"	MONOLITHIC INSTALLATION
PL-4	PLASTIC LAMINATE	FORMICA		PROVIDE (UNDO)		SEE DRAWINGS FOR LOCATION
PL-5	PLASTIC LAMINATE	FORMICA		CHOCOLATE WARP 585835 - MATTE FINISH		CASEWORK - UPPER AND LOWER CABINETS
PL-6	PLASTIC LAMINATE	FORMICA		CLASSICWORK - COLORED		CASEWORK - UPPER AND LOWER CABINETS
PL-7	PLASTIC LAMINATE	FORMICA		CREAMY EIT 20V712 - SATIN FINISH		PROVIDE (1) PRIMER COAT (SHERWIN WILLIAMS MULTIPURPOSE LATEX PRIMER/SEALER) & (2) FINISH COATS
PL-8	PLASTIC LAMINATE	FORMICA		CREAMY EIT 20V712 - SATIN FINISH		PROVIDE (1) PRIMER COAT (SHERWIN WILLIAMS MULTIPURPOSE LATEX PRIMER/SEALER) & (2) FINISH COATS
PL-9	PLASTIC LAMINATE	FORMICA		CREAMY EIT 20V712 - SATIN FINISH		PROVIDE (1) PRIMER COAT (SHERWIN WILLIAMS MULTIPURPOSE LATEX PRIMER/SEALER) & (2) FINISH COATS
PL-10	PLASTIC LAMINATE	FORMICA		WILD CURSANT 25-33 SATIN - EGGSHELL FINISH		PROVIDE (1) PRIMER COAT (SHERWIN WILLIAMS MULTIPURPOSE LATEX PRIMER/SEALER) & (4) FINISH COATS
PL-11	PLASTIC LAMINATE	FORMICA		WILD CURSANT 25-33 SATIN - EGGSHELL FINISH		PROVIDE (1) PRIMER COAT (SHERWIN WILLIAMS MULTIPURPOSE LATEX PRIMER/SEALER) & (4) FINISH COATS
PL-12	PLASTIC LAMINATE	FORMICA		WILD CURSANT 25-33 SATIN - EGGSHELL FINISH		PROVIDE (1) PRIMER COAT (SHERWIN WILLIAMS MULTIPURPOSE LATEX PRIMER/SEALER) & (4) FINISH COATS
PL-13	PLASTIC LAMINATE	FORMICA		WILD CURSANT 25-33 SATIN - EGGSHELL FINISH		PROVIDE (1) PRIMER COAT (SHERWIN WILLIAMS MULTIPURPOSE LATEX PRIMER/SEALER) & (4) FINISH COATS
PL-14	PLASTIC LAMINATE	FORMICA		WILD CURSANT 25-33 SATIN - EGGSHELL FINISH		PROVIDE (1) PRIMER COAT (SHERWIN WILLIAMS MULTIPURPOSE LATEX PRIMER/SEALER) & (4) FINISH COATS
PL-15	PLASTIC LAMINATE	FORMICA		WILD CURSANT 25-33 SATIN - EGGSHELL FINISH		PROVIDE (1) PRIMER COAT (SHERWIN WILLIAMS MULTIPURPOSE LATEX PRIMER/SEALER) & (4) FINISH COATS
PL-16	PLASTIC LAMINATE	FORMICA		WILD CURSANT 25-33 SATIN - EGGSHELL FINISH		PROVIDE (1) PRIMER COAT (SHERWIN WILLIAMS MULTIPURPOSE LATEX PRIMER/SEALER) & (4) FINISH COATS
PL-17	PLASTIC LAMINATE	FORMICA		WILD CURSANT 25-33 SATIN - EGGSHELL FINISH		PROVIDE (1) PRIMER COAT (SHERWIN WILLIAMS MULTIPURPOSE LATEX PRIMER/SEALER) & (4) FINISH COATS
PL-18	PLASTIC LAMINATE	FORMICA		WILD CURSANT 25-33 SATIN - EGGSHELL FINISH		PROVIDE (1) PRIMER COAT (SHERWIN WILLIAMS MULTIPURPOSE LATEX PRIMER/SEALER) & (4) FINISH COATS
PL-19	PLASTIC LAMINATE	FORMICA		WILD CURSANT 25-33 SATIN - EGGSHELL FINISH		PROVIDE (1) PRIMER COAT (SHERWIN WILLIAMS MULTIPURPOSE LATEX PRIMER/SEALER) & (4) FINISH COATS
PL-20	PLASTIC LAMINATE	FORMICA		WILD CURSANT 25-33 SATIN - EGGSHELL FINISH		PROVIDE (1) PRIMER COAT (SHERWIN WILLIAMS MULTIPURPOSE LATEX PRIMER/SEALER) & (4) FINISH COATS
PL-21	PLASTIC LAMINATE	FORMICA		WILD CURSANT 25-33 SATIN - EGGSHELL FINISH		PROVIDE (1) PRIMER COAT (SHERWIN WILLIAMS MULTIPURPOSE LATEX PRIMER/SEALER) & (4) FINISH COATS
PL-22	PLASTIC LAMINATE	FORMICA		WILD CURSANT 25-33 SATIN - EGGSHELL FINISH		PROVIDE (1) PRIMER COAT (SHERWIN WILLIAMS MULTIPURPOSE LATEX PRIMER/SEALER) & (4) FINISH COATS
PL-23	PLASTIC LAMINATE	FORMICA		WILD CURSANT 25-33 SATIN - EGGSHELL FINISH		PROVIDE (1) PRIMER COAT (SHERWIN WILLIAMS MULTIPURPOSE LATEX PRIMER/SEALER) & (4) FINISH COATS
PL-24	PLASTIC LAMINATE	FORMICA		WILD CURSANT 25-33 SATIN - EGGSHELL FINISH		PROVIDE (1) PRIMER COAT (SHERWIN WILLIAMS MULTIPURPOSE LATEX PRIMER/SEALER) & (4) FINISH COATS
PL-25	PLASTIC LAMINATE	FORMICA		WILD CURSANT 25-33 SATIN - EGGSHELL FINISH		PROVIDE (1) PRIMER COAT (SHERWIN WILLIAMS MULTIPURPOSE LATEX PRIMER/SEALER) & (4) FINISH COATS
PL-26	PLASTIC LAMINATE	FORMICA		WILD CURSANT 25-33 SATIN - EGGSHELL FINISH		PROVIDE (1) PRIMER COAT (SHERWIN WILLIAMS MULTIPURPOSE LATEX PRIMER/SEALER) & (4) FINISH COATS
PL-27	PLASTIC LAMINATE	FORMICA		WILD CURSANT 25-33 SATIN - EGGSHELL FINISH		PROVIDE (1) PRIMER COAT (SHERWIN WILLIAMS MULTIPURPOSE LATEX PRIMER/SEALER) & (4) FINISH COATS
PL-28	PLASTIC LAMINATE	FORMICA		WILD CURSANT 25-33 SATIN - EGGSHELL FINISH		PROVIDE (1) PRIMER COAT (SHERWIN WILLIAMS MULTIPURPOSE LATEX PRIMER/SEALER) & (4) FINISH COATS
PL-29	PLASTIC LAMINATE	FORMICA		WILD CURSANT 25-33 SATIN - EGGSHELL FINISH		PROVIDE (1) PRIMER COAT (SHERWIN WILLIAMS MULTIPURPOSE LATEX PRIMER/SEALER) & (4) FINISH COATS
PL-30	PLASTIC LAMINATE	FORMICA		WILD CURSANT 25-33 SATIN - EGGSHELL FINISH		PROVIDE (1) PRIMER COAT (SHERWIN WILLIAMS MULTIPURPOSE LATEX PRIMER/SEALER) & (4) FINISH COATS
PL-31	PLASTIC LAMINATE	FORMICA		WILD CURSANT 25-33 SATIN - EGGSHELL FINISH		PROVIDE (1) PRIMER COAT (SHERWIN WILLIAMS MULTIPURPOSE LATEX PRIMER/SEALER) & (4) FINISH COATS
PL-32	PLASTIC LAMINATE	FORMICA		WILD CURSANT 25-33 SATIN - EGGSHELL FINISH		PROVIDE (1) PRIMER COAT (SHERWIN WILLIAMS MULTIPURPOSE LATEX PRIMER/SEALER) & (4) FINISH COATS
PL-33	PLASTIC LAMINATE	FORMICA		WILD CURSANT 25-33 SATIN - EGGSHELL FINISH		PROVIDE (1) PRIMER COAT (SHERWIN WILLIAMS MULTIPURPOSE LATEX PRIMER/SEALER) & (4) FINISH COATS
PL-34	PLASTIC LAMINATE	FORMICA		WILD CURSANT 25-33 SATIN - EGGSHELL FINISH		PROVIDE (1) PRIMER COAT (SHERWIN WILLIAMS MULTIPURPOSE LATEX PRIMER/SEALER) & (4) FINISH COATS
PL-35	PLASTIC LAMINATE	FORMICA		WILD CURSANT 25-33 SATIN - EGGSHELL FINISH		PROVIDE (1) PRIMER COAT (SHERWIN WILLIAMS MULTIPURPOSE LATEX PRIMER/SEALER) & (4) FINISH COATS
PL-36	PLASTIC LAMINATE	FORMICA		WILD CURSANT 25-33 SATIN - EGGSHELL FINISH		PROVIDE (1) PRIMER COAT (SHERWIN WILLIAMS MULTIPURPOSE LATEX PRIMER/SEALER) & (4) FINISH COATS
PL-37	PLASTIC LAMINATE	FORMICA		WILD CURSANT 25-33 SATIN - EGGSHELL FINISH		PROVIDE (1) PRIMER COAT (SHERWIN WILLIAMS MULTIPURPOSE LATEX PRIMER/SEALER) & (4) FINISH COATS
PL-38	PLASTIC LAMINATE	FORMICA		WILD CURSANT 25-33 SATIN - EGGSHELL FINISH		PROVIDE (1) PRIMER COAT (SHERWIN WILLIAMS MULTIPURPOSE LATEX PRIMER/SEALER) & (4) FINISH COATS
PL-39	PLASTIC LAMINATE	FORMICA		WILD CURSANT 25-33 SATIN - EGGSHELL FINISH		PROVIDE (1) PRIMER COAT (SHERWIN WILLIAMS MULTIPURPOSE LATEX PRIMER/SEALER) & (4) FINISH COATS
PL-40	PLASTIC LAMINATE	FORMICA		WILD CURSANT 25-33 SATIN - EGGSHELL FINISH		PROVIDE (1) PRIMER COAT (SHERWIN WILLIAMS MULTIPURPOSE LATEX PRIMER/SEALER) & (4) FINISH COATS
PL-41	PLASTIC LAMINATE	FORMICA		WILD CURSANT 25-33 SATIN - EGGSHELL FINISH		PROVIDE (1) PRIMER COAT (SHERWIN WILLIAMS MULTIPURPOSE LATEX PRIMER/SEALER) & (4) FINISH COATS
PL-42	PLASTIC LAMINATE	FORMICA		WILD CURSANT 25-33 SATIN - EGGSHELL FINISH		PROVIDE (1) PRIMER COAT (SHERWIN WILLIAMS MULTIPURPOSE LATEX PRIMER/SEALER) & (4) FINISH COATS
PL-43	PLASTIC LAMINATE	FORMICA		WILD CURSANT 25-33 SATIN - EGGSHELL FINISH		PROVIDE (1) PRIMER COAT (SHERWIN WILLIAMS MULTIPURPOSE LATEX PRIMER/SEALER) & (4) FINISH COATS
PL-44	PLASTIC LAMINATE	FORMICA		WILD CURSANT 25-33 SATIN - EGGSHELL FINISH		PROVIDE (1) PRIMER COAT (SHERWIN WILLIAMS MULTIPURPOSE LATEX PRIMER/SEALER) & (4) FINISH COATS
PL-45	PLASTIC LAMINATE	FORMICA		WILD CURSANT 25-33 SATIN - EGGSHELL FINISH		PROVIDE (1) PRIMER COAT (SHERWIN WILLIAMS MULTIPURPOSE LATEX PRIMER/SEALER) & (4) FINISH COATS
PL-46	PLASTIC LAMINATE	FORMICA		WILD CURSANT 25-33 SATIN - EGGSHELL FINISH		PROVIDE (1) PRIMER COAT (SHERWIN WILLIAMS MULTIPURPOSE LATEX PRIMER/SEALER) & (4) FINISH COATS
PL-47	PLASTIC LAMINATE	FORMICA		WILD CURSANT 25-33 SATIN - EGGSHELL FINISH		PROVIDE (1) PRIMER COAT (SHERWIN WILLIAMS MULTIPURPOSE LATEX PRIMER/SEALER) & (4) FINISH COATS
PL-48	PLASTIC LAMINATE	FORMICA		WILD CURSANT 25-33 SATIN - EGGSHELL FINISH		PROVIDE (1) PRIMER COAT (SHERWIN WILLIAMS MULTIPURPOSE LATEX PRIMER/SEALER) & (4) FINISH COATS
PL-49	PLASTIC LAMINATE	FORMICA		WILD CURSANT 25-33 SATIN - EGGSHELL FINISH		PROVIDE (1) PRIMER COAT (SHERWIN WILLIAMS MULTIPURPOSE LATEX PRIMER/SEALER) & (4) FINISH COATS
PL-50	PLASTIC LAMINATE	FORMICA		WILD CURSANT 25-33 SATIN - EGGSHELL FINISH		PROVIDE (1) PRIMER COAT (SHERWIN WILLIAMS MULTIPURPOSE LATEX PRIMER/SEALER) & (4) FINISH COATS
PL-51	PLASTIC LAMINATE	FORMICA		WILD CURSANT 25-33 SATIN - EGGSHELL FINISH		PROVIDE (1) PRIMER COAT (SHERWIN WILLIAMS MULTIPURPOSE LATEX PRIMER/SEALER) & (4) FINISH COATS
PL-52	PLASTIC LAMINATE	FORMICA		WILD CURSANT 25-33 SATIN - EGGSHELL FINISH		PROVIDE (1) PRIMER COAT (SHERWIN WILLIAMS MULTIPURPOSE LATEX PRIMER/SEALER) & (4) FINISH COATS
PL-53	PLASTIC LAMINATE	FORMICA		WILD CURSANT 25-33 SATIN - EGGSHELL FINISH		PROVIDE (1) PRIMER COAT (SHERWIN WILLIAMS MULTIPURPOSE LATEX PRIMER/SEALER) & (4) FINISH COATS
PL-54	PLASTIC LAMINATE	FORMICA		WILD CURSANT 25-33 SATIN - EGGSHELL FINISH		PROVIDE (1) PRIMER COAT (SHERWIN WILLIAMS MULTIPURPOSE LATEX PRIMER/SEALER) & (4) FINISH COATS
PL-55	PLASTIC LAMINATE	FORMICA		WILD CURSANT 25-33 SATIN - EGGSHELL FINISH		PROVIDE (1) PRIMER COAT (SHERWIN WILLIAMS MULTIPURPOSE LATEX PRIMER/SEALER) & (4) FINISH COATS
PL-56	PLASTIC LAMINATE	FORMICA		WILD CURSANT 25-33 SATIN - EGGSHELL FINISH		PROVIDE (1) PRIMER COAT (SHERWIN WILLIAMS MULTIPURPOSE LATEX PRIMER/SEALER) & (4) FINISH COATS
PL-57	PLASTIC LAMINATE	FORMICA		WILD CURSANT 25-33 SATIN - EGGSHELL FINISH		PROVIDE (1) PRIMER COAT (SHERWIN WILLIAMS MULTIPURPOSE LATEX PRIMER/SEALER) & (4) FINISH COATS
PL-58	PLASTIC LAMINATE	FORMICA		WILD CURSANT 25-33 SATIN - EGGSHELL FINISH		PROVIDE (1) PRIMER COAT (SHERWIN WILLIAMS MULTIPURPOSE LATEX PRIMER/SEALER) & (4) FINISH COATS
PL-59	PLASTIC LAMINATE	FORMICA		WILD CURSANT 25-33 SATIN - EGGSHELL FINISH		PROVIDE (1) PRIMER COAT (SHERWIN WILLIAMS MULTIPURPOSE LATEX PRIMER/SEALER) & (4) FINISH COATS
PL-60	PLASTIC LAMINATE	FORMICA		WILD CURSANT 25-33 SATIN - EGGSHELL FINISH		PROVIDE (1) PRIMER COAT (SHERWIN WILLIAMS MULTIPURPOSE LATEX PRIMER/SEALER) & (4) FINISH COATS
PL-61	PLASTIC LAMINATE	FORMICA		WILD CURSANT 25-33 SATIN - EGGSHELL FINISH		PROVIDE (1) PRIMER COAT (SHERWIN WILLIAMS MULTIPURPOSE LATEX PRIMER/SEALER) & (4) FINISH COATS
PL-62	PLASTIC LAMINATE	FORMICA		WILD CURSANT 25-33 SATIN - EGGSHELL FINISH		PROVIDE (1) PRIMER COAT (SHERWIN WILLIAMS MULTIPURPOSE LATEX PRIMER/SEALER) & (4) FINISH COATS
PL-63	PLASTIC LAMINATE	FORMICA		WILD CURSANT 25-33 SATIN - EGGSHELL FINISH		PROVIDE (1) PRIMER COAT (SHERWIN WILLIAMS MULTIPURPOSE LATEX PRIMER/SEALER) & (4) FINISH COATS
PL-64	PLASTIC LAMINATE	FORMICA		WILD CURSANT 25-33 SATIN - EGGSHELL FINISH		PROVIDE (1) PRIMER COAT (SHERWIN WILLIAMS MULTIPURPOSE LATEX PRIMER/SEALER) & (4) FINISH COATS
PL-65	PLASTIC LAMINATE	FORMICA		WILD CURSANT 25-33 SATIN - EGGSHELL FINISH		PROVIDE (1) PRIMER COAT (SHERWIN WILLIAMS MULTIPURPOSE LATEX PRIMER/SEALER) & (4) FINISH COATS
PL-66	PLASTIC LAMINATE	FORMICA		WILD CURSANT 25-33 SATIN - EGGSHELL FINISH		PROVIDE (1) PRIMER COAT (SHERWIN WILLIAMS MULTIPURPOSE LATEX PRIMER/SEALER) & (4) FINISH COATS
PL-67	PLASTIC LAMINATE	FORMICA		WILD CURSANT 25-33 SATIN - EGGSHELL FINISH		PROVIDE (1) PRIMER COAT (SHERWIN WILLIAMS MULTIPURPOSE LATEX PRIMER/SEALER) & (4) FINISH COATS
PL-68	PLASTIC LAMINATE	FORMICA		WILD CURSANT 25-33 SATIN - EGGSHELL FINISH		PROVIDE (1) PRIMER COAT (SHERWIN WILLIAMS MULTIPURPOSE LATEX PRIMER/SEALER) & (4) FINISH COATS
PL-69	PLASTIC LAMINATE	FORMICA		WILD CURSANT 25-33 SATIN - EGGSHELL FINISH		PROVIDE (1) PRIMER COAT (SHERWIN WILLIAMS MULTIPURPOSE LATEX PRIMER/SEALER) & (4) FINISH COATS
PL-70	PLASTIC LAMINATE	FORMICA		WILD CURSANT 25-33 SATIN - EGGSHELL FINISH		PROVIDE (1) PRIMER COAT (SHERWIN WILLIAMS MULTIPURPOSE LATEX PRIMER/SEALER) & (4) FINISH COATS
PL-71	PLASTIC LAMINATE	FORMICA		WILD CURSANT 25-33 SATIN - EGGSHELL FINISH		PROVIDE (1) PRIMER COAT (SHERWIN WILLIAMS MULTIPURPOSE LATEX PRIMER/SEALER) & (4) FINISH COATS
PL-72	PLASTIC LAMINATE	FORMICA		WILD CURSANT 25-33 SATIN - EGGSHELL FINISH		PROVIDE (1) PRIMER COAT (SHERWIN WILLIAMS MULTIPURPOSE LATEX PRIMER/SEALER) & (4) FINISH COATS
PL-73	PLASTIC LAMINATE	FORMICA		WILD CURSANT 25-33 SATIN - EGGSHELL FINISH		PROVIDE (1) PRIMER COAT (SHERWIN WILLIAMS MULTIPURPOSE LATEX PRIMER/SEALER) & (4) FINISH COATS
PL-74	PLASTIC LAMINATE	FORMICA		WILD CURSANT 25-33 SATIN - EGGSHELL FINISH		PROVIDE (1) PRIMER COAT (SHERWIN WILLIAMS MULTIPURPOSE LATEX PRIMER/SEALER) & (4) FINISH COATS
PL-75	PLASTIC LAMINATE	FORMICA		WILD CURSANT 25-33 SATIN - EGGSHELL FINISH		PROVIDE (1) PRIMER COAT (SHERWIN WILLIAMS MULTIPURPOSE LATEX PRIMER/SEALER) & (4) FINISH COATS
PL-76	PLASTIC LAMINATE	FORMICA		WILD CURSANT 25-33 SATIN - EGGSHELL FINISH		PROVIDE