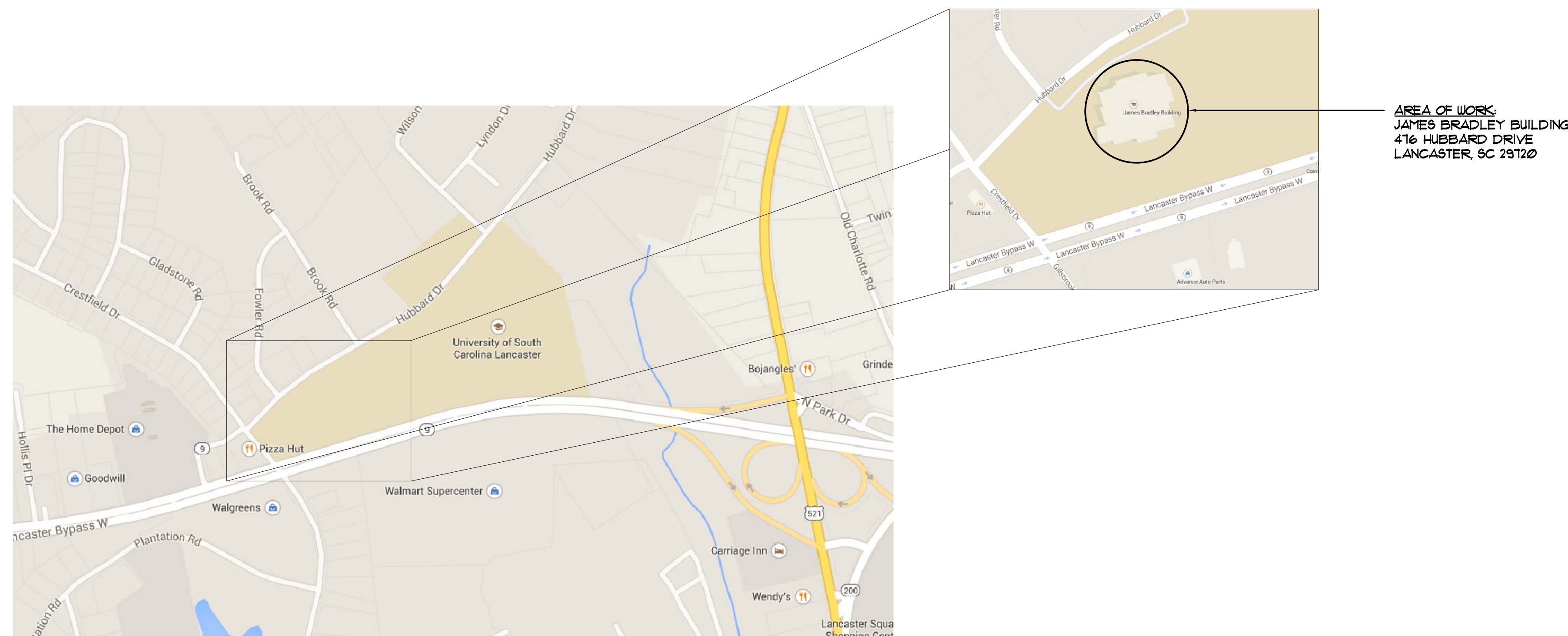


USC LANCASTER - BRADLEY BLDG. LAB EXHAUST SYSTEM UPGRADES

STATE PROJECT NO. H37-9515

THE UNIVERSITY OF SOUTH CAROLINA
LANCASTER, SOUTH CAROLINA

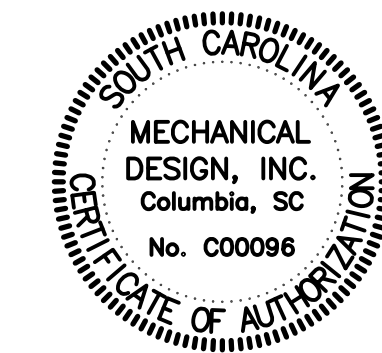
FACILITIES PLANNING AND CONSTRUCTION



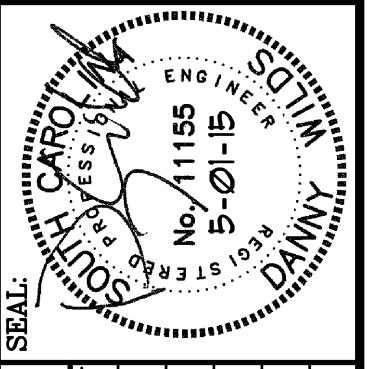
INDEX OF DRAWINGS	
C001	COVER SHEET
M001	MECHANICAL NOTES, SCHEDULES, AND DETAILS
M100	MECHANICAL DEMOLITION FLOOR PLAN
M101	MECHANICAL RENOVATION FLOOR PLAN
E1	ELECTRICAL NOTES, LEGEND, AND KEY PLAN
E2	ELECTRICAL DEMOLITION FLOOR PLAN
E3	ELECTRICAL RENOVATION FLOOR PLAN

CODE REVIEW INFORMATION	
PROJECT DESIGNED IN ACCORDANCE WITH:	
1.	International Building Code - 2012 Edition.
2.	International Plumbing Code - 2012 Edition.
3.	International Mechanical Code - 2012 Edition.
4.	National Electric Code - 2011 Edition.

 UNIVERSITY OF SOUTH CAROLINA-LANCASTER
NO SCALE



MECHANICAL DESIGN, INC.
4403 Broad River Road
Columbia, S.C. 29210
(803) 731-9534
(803) 731-9537 FAX
CONTACT: Danny Wilds
DATE: 05/01/15 COMM. NO. 153195



DRAWING	DATE	DRAWN BY	CHECKED BY
BRADLEYC001	01 MAY 15	CDW	CDW
REV.	DESCRIPTION	DATE	BY

PROJECT TITLE: USC LANCASTER - BRADLEY BLDG. LAB EXHAUST SYSTEM UPGRADES
S.C. STATE PROJ. NO. H37-9515
University of South Carolina

SHEET: C001
OF 1
SHEET IN SET: OF

CAMPUS PLANNING AND CONSTRUCTION
COLUMBIA, SC 29208

VENTILATING FAN SCHEDULE

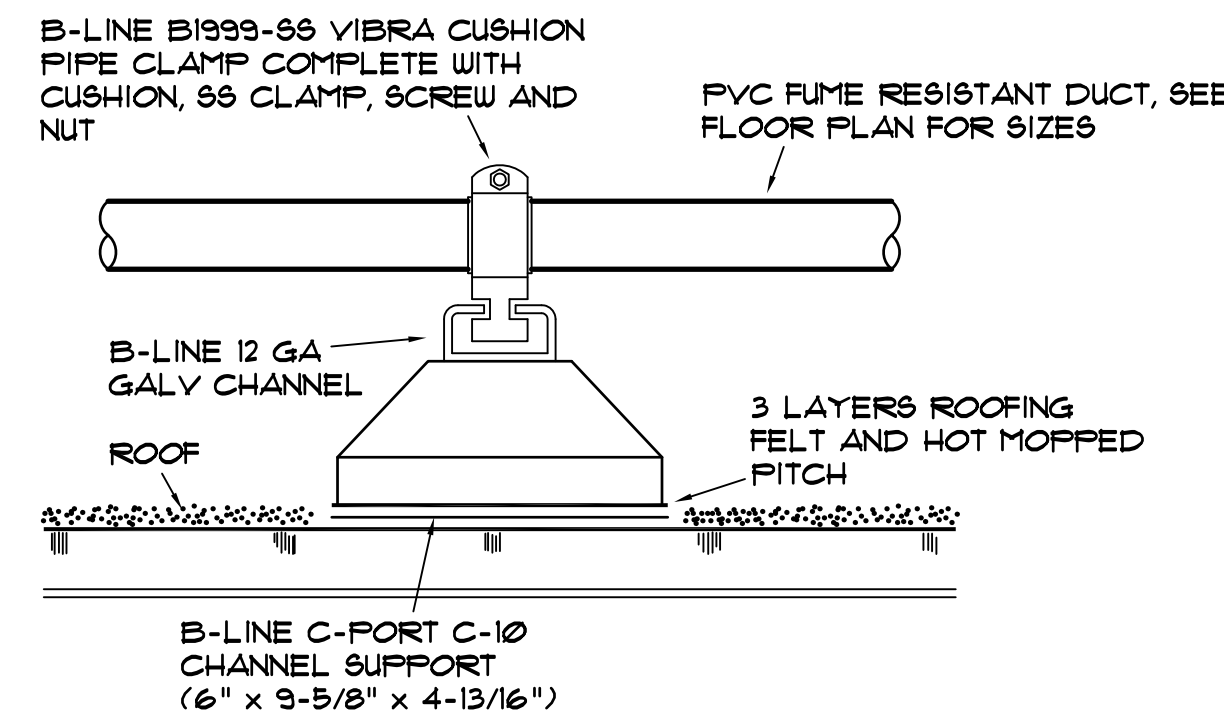
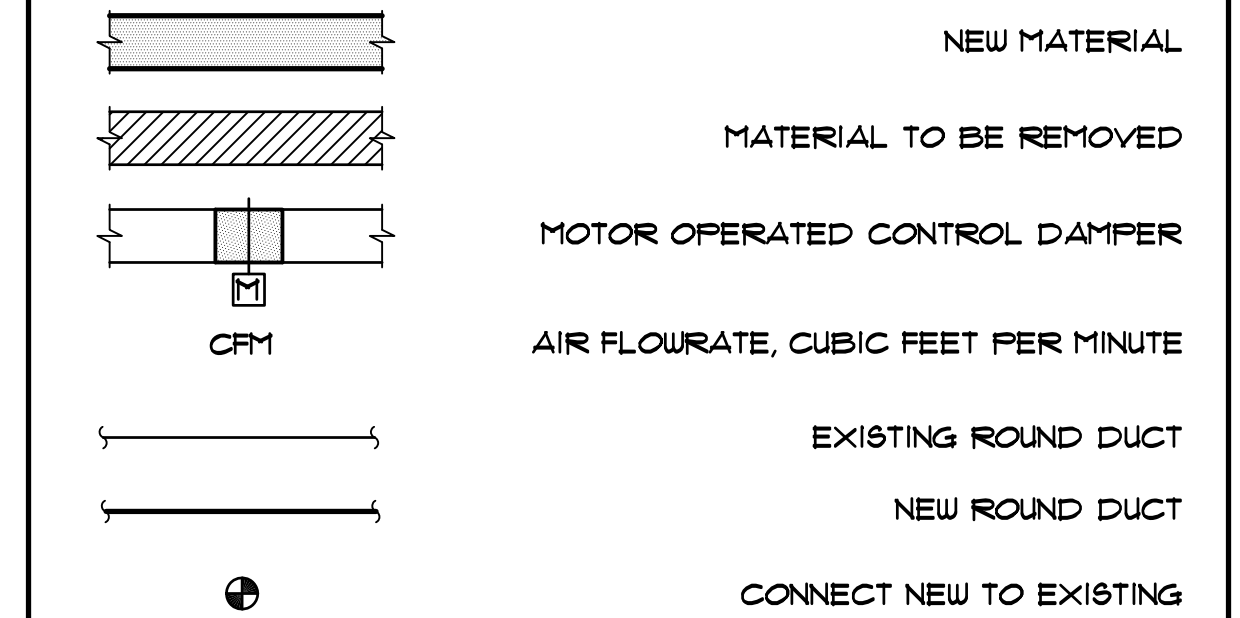
MARK	GREENHECK MODEL (2)	CFM	FAN S.P.	MOTOR SIZE (1)	SONES	DRIVE	CONTROLLED BY
LEF-1 (3) (6)	SUD-8-VG	700	3/4"	1/2 HP	12.6	DIRECT	(5)
LEF-4 (3) (6)	SUD-8-VG	700	3/4"	1/2 HP	12.6	DIRECT	(5)
LEF-5 (3) (6)	SUD-8-VG	700	3/4"	1/2 HP	12.6	DIRECT	(5)
LEF-6 (3) (6)	SUD-8-VG	700	3/4"	1/2 HP	12.6	DIRECT	(5)
EF-2 (4)	CUE-095-D	930	1/4"	1/6 HP	8.1	DIRECT	(5)

- (1) FANS TO MATCH AVAILABLE ELECTRICAL SERVICE, SEE ELECTRICAL
- (2) OR EQUAL BY COOK, TWIN CITY, CARNES, PENN OR APPROVED EQUAL
- (3) PROVIDE WITH DISCONNECT AND BACKDRAFT DAMPER
- (4) PROVIDE WITH ALUM. ROOF CURB, DISCONNECT AND BACKDRAFT DAMPER
- (5) LINE VOLTAGE SCR CONTROLLER - CONNECT FAN TO EXISTING EMS (ALC)
- (6) PROVIDE GREENHECK HI-PRO POLYESTER COATING ON FAN SURFACES IN CONTACT WITH EXHAUST AIR STREAM

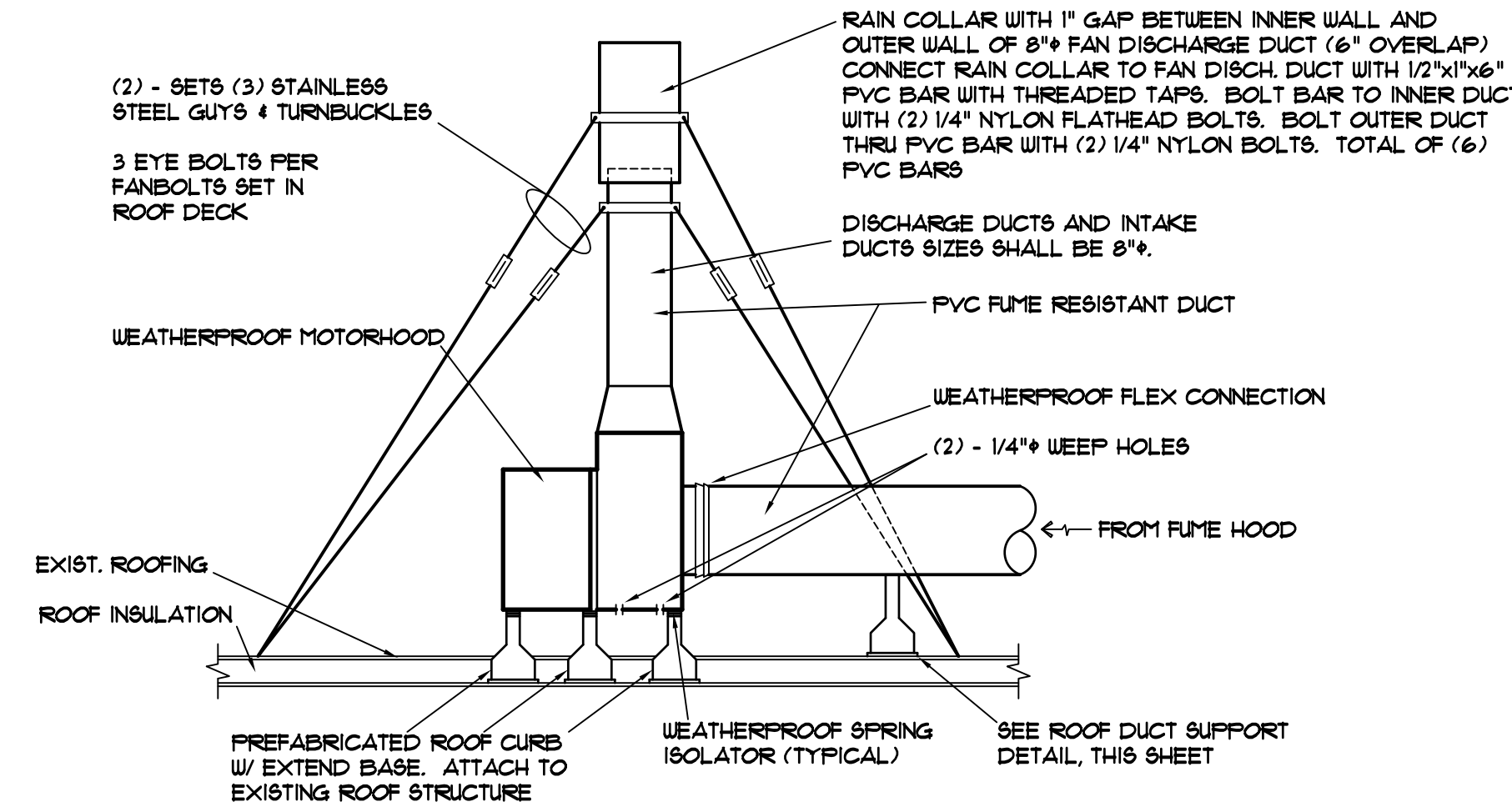
NOTES

1. DO NOT SCALE DRAWINGS. ROUGH FROM EXISTING CONDITIONS, AND EQUIPMENT MANUFACTURER'S DRAWINGS.
2. DIMENSIONS ARE IN INCHES UNLESS OTHERWISE NOTED. DUCT SIZES SHOWN ON DRAWINGS ARE INTERIOR DIMENSIONS.
3. WHENEVER THE WORD "PROVIDE" IS USED IT SHALL MEAN FURNISH AND INSTALL COMPLETE AND READY FOR USE.
4. INSTALLATION OF EQUIPMENT, DUCTWORK, AND PIPING, INCLUDING VIBRATION ISOLATION SHALL COMPLY WITH 2012 INTERNATIONAL BUILDING CODE FOR SEISMIC PROTECTION. SEE SPECIFICATIONS.
5. PROVIDE NEW 8" HEAVY DUTY ROUND CONTROL DAMPERS EQUAL TO RUSKIN CDR25 WITH MOTOR OPERATOR. DAMPERS AT CEILING EXHAUST SHALL BE LOW LEAKAGE WITH BLADE SEALS. DAMPERS AT HOOD CONNECTIONS SHALL BE PROVIDED WITHOUT BLADE SEALS.

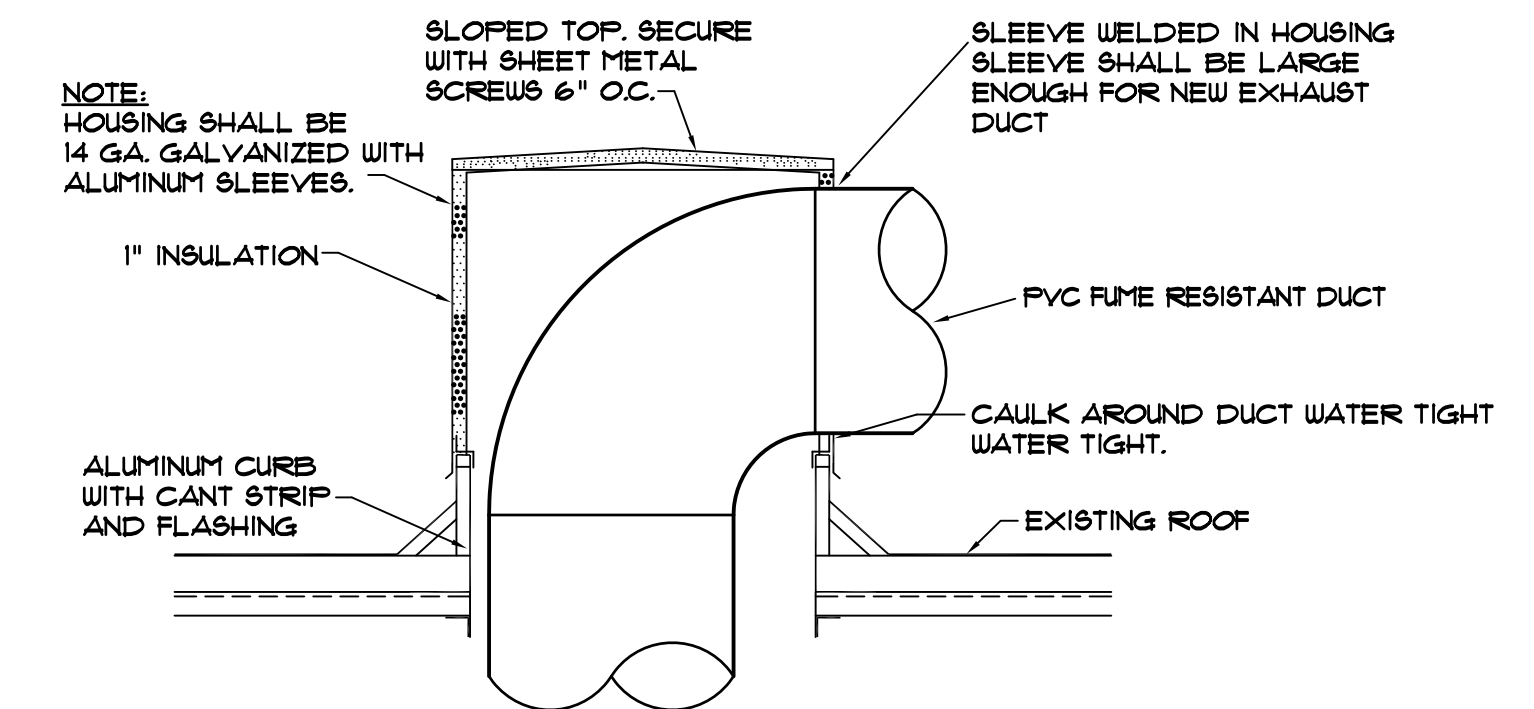
SYMBOLS



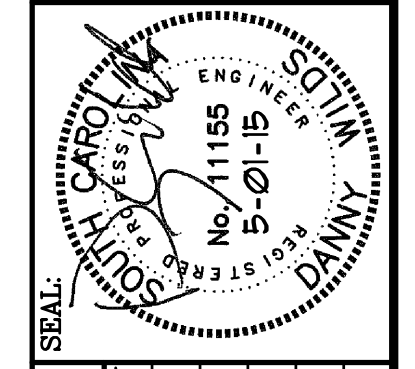
ROOFTOP DUCT SUPPORT DETAIL
NO SCALE



UTILITY FAN / FUME HOOD EXHAUST DETAIL
NO SCALE



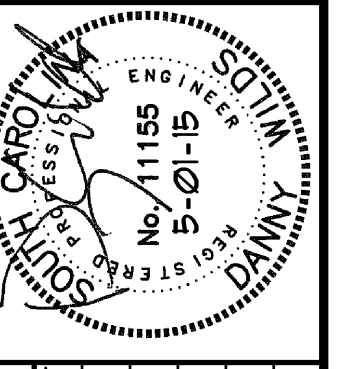
DUCT PENETRATION PENTHOUSE DETAIL
NOT TO SCALE



DRAWING	DATE	DRAWN BY	CHECKED BY	SEAL
BRADLEY MOOTS	01 MAY 15	CDW	CDW	
DESCRIPTION	DATE	DATE	DATE	DATE

PROJECT TITLE: USC LANCASTER - BRADLEY BLDG. LAB EXHAUST SYSTEM UPGRADES
 S.C. STATE PROJ. NO. H37-9515
 University of South Carolina

MECHANICAL DESIGN, INC.
 4403 Broad River Road
 Columbia, S.C. 29210
 (803) 731-9834
 (803) 731-9837 FAX
 CONTACT: Danny Wilds
 DATE: 05/01/15 COMM. NO. 153195



REV.	DESCRIPTION	DATE	BY	DATE	BY

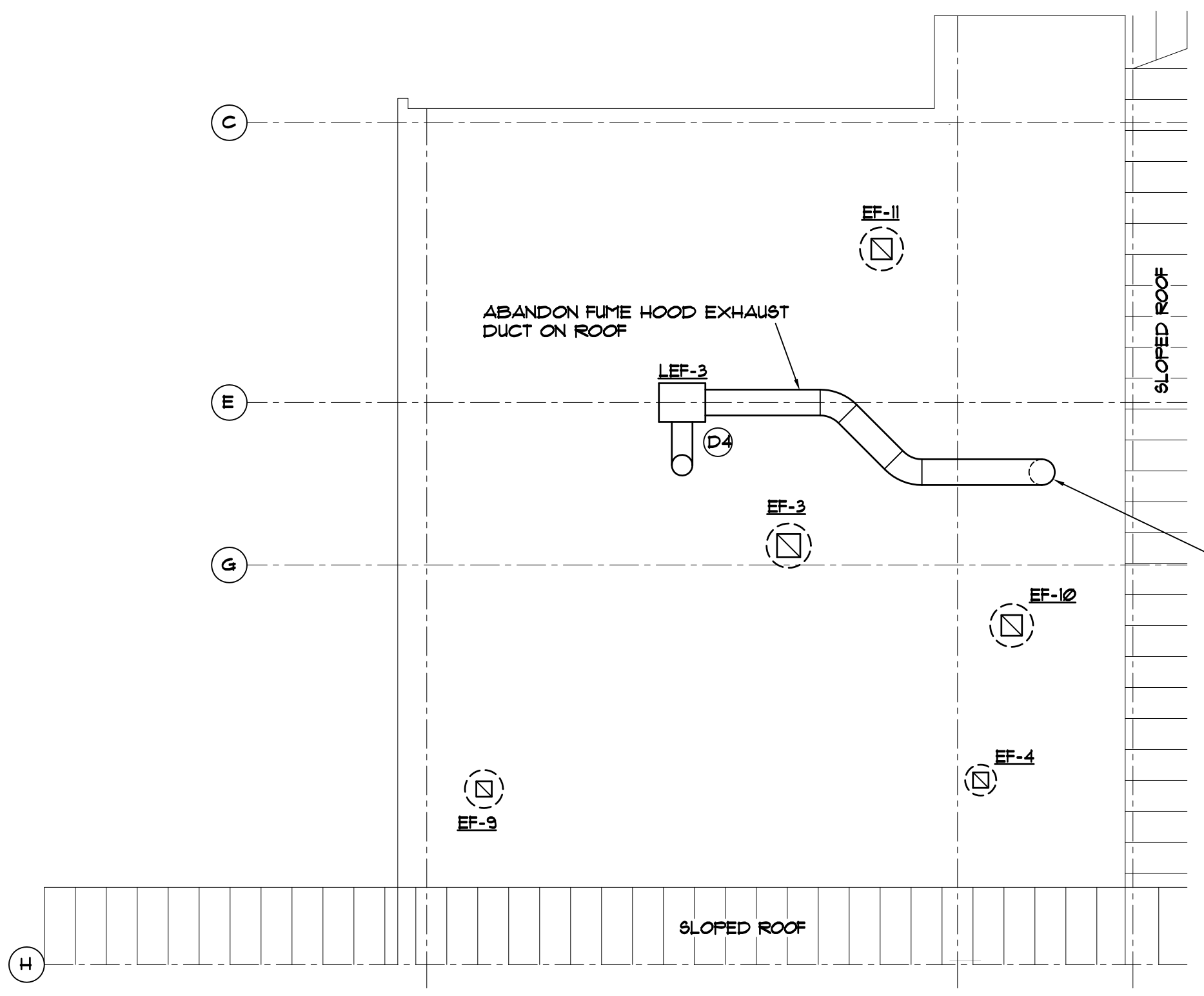
PROJECT TITLE: USC LANCASTER - BRADLEY BLDG.
LAB EXHAUST SYSTEM UPGRADES

S.C. STATE PROJ. NO. H37-9515

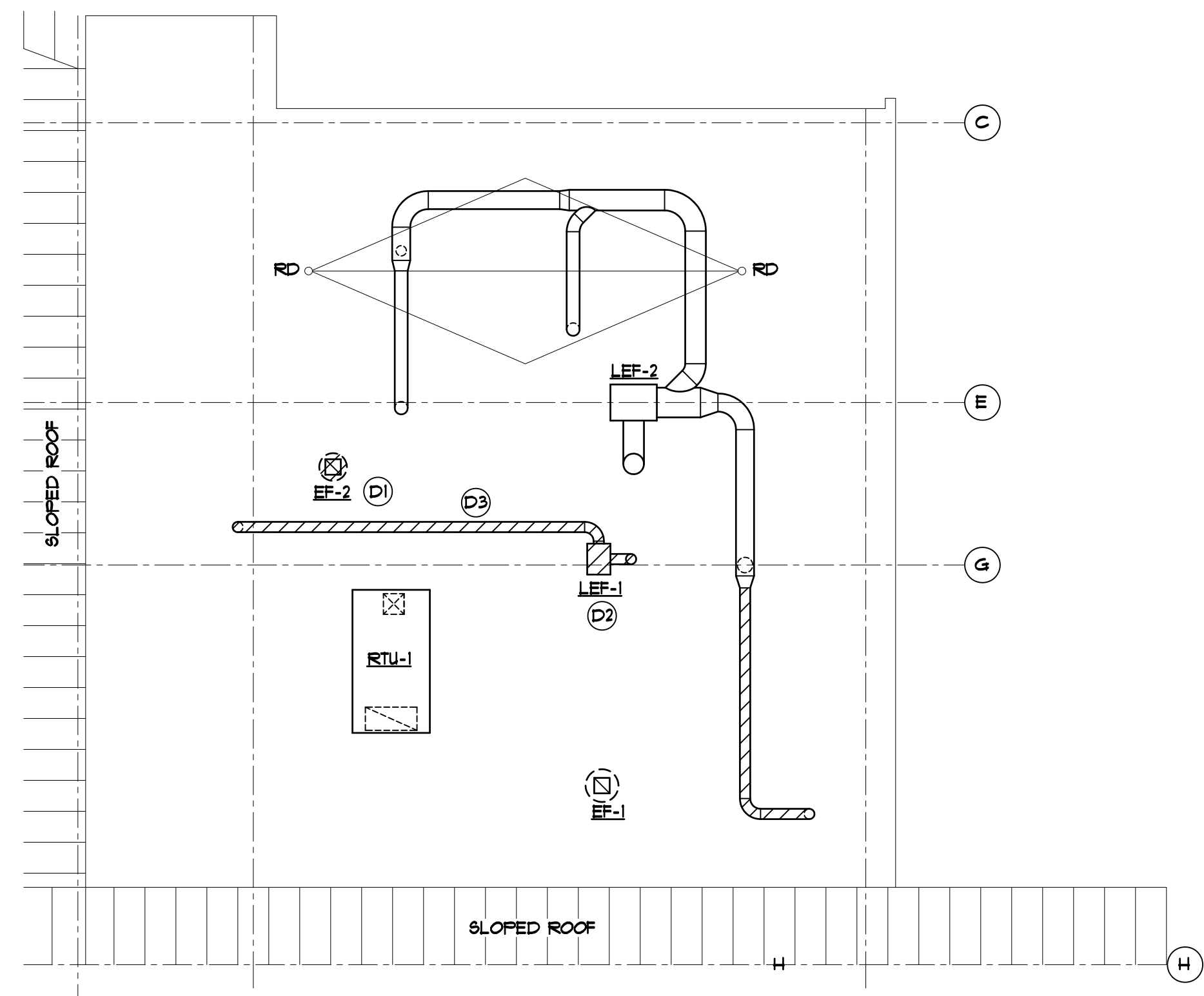
University of South Carolina

SHEET: M100
OF 3
SHEET IN SET: OF

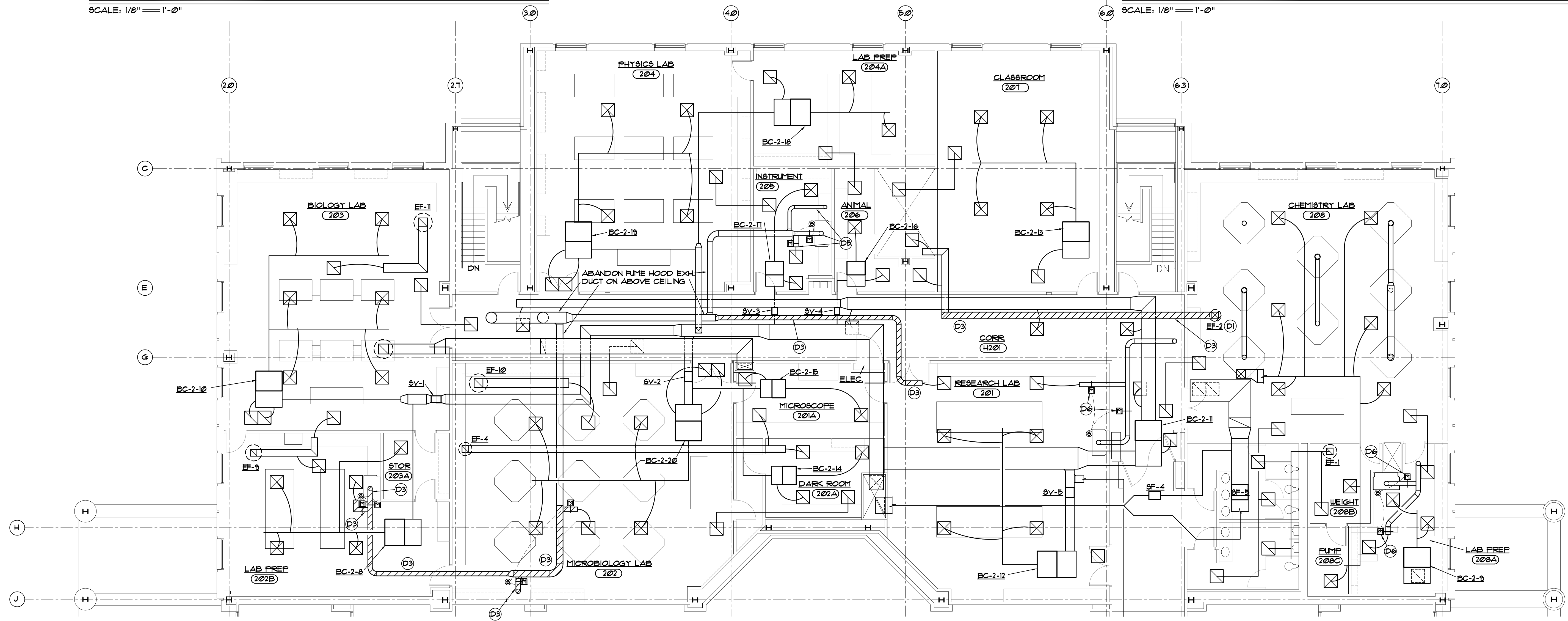
- ### DEMOLITION NOTES
- (D1) REMOVE ROOF MOUNTED CENTRIFUGAL EXHAUST FAN COMPLETE INCLUDING CURB, DUCT PENETRATION, AND POWER CONNECTION.
 - (D2) REMOVE ROOF MOUNTED UTILITY SET FAN COMPLETE INCLUDING EXH. DUCT SHOWN HATCHED. RE-USE EQUIPMENT RAILS AND GUY WIRES.
 - (D3) REMOVE EXHAUST DUCT SHOWN HATCHED COMPLETE INCLUDING HANGERS AND SUPPORTS. INCLUDE REMOVAL OF MOTOR OPERATED CONTROL DAMPERS, REMOVE DOWN TO CONNECTION TO FUME HOOD.
 - (D4) ABANDON EXISTING FUME EXHAUST FAN. LOCK-OUT CONTROLS AND DISCONNECT SWITCH, AND TAG "NOT USABLE".
 - (D5) LOCK-OUT CONTROLS TO DAMPERS FOR BOTH FUME EXHAUST HOODS AND TAG HOODS "NOT USABLE".
 - (D6) REMOVE MOTOR OPERATED CONTROL DAMPER IN EXISTING 8" EXHAUST DUCT. REPLACE WITH NEW AS SHOWN ON RENOVATION PLAN.



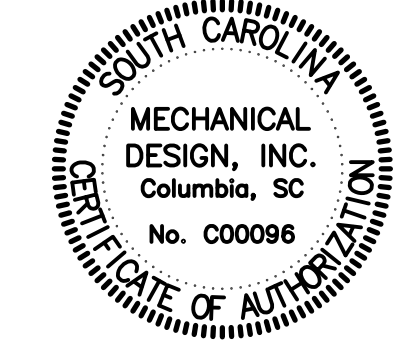
PARTIAL ROOF LEVEL MECHANICAL PLAN - DEMOLITION
SCALE: 1/8" = 1'-0"



PARTIAL ROOF LEVEL MECHANICAL PLAN - DEMOLITION
SCALE: 1/8" = 1'-0"

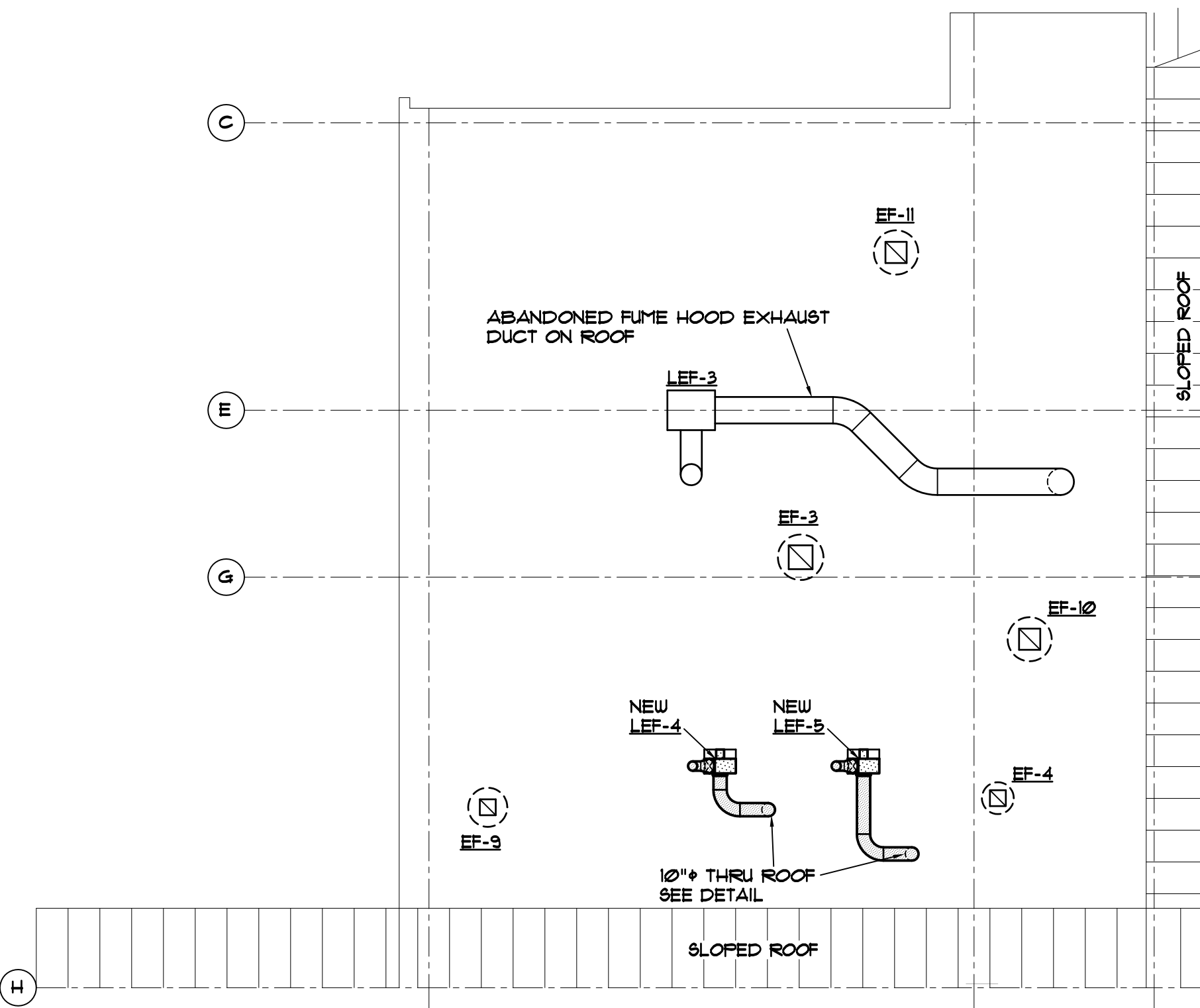


PARTIAL SECOND LEVEL MECHANICAL PLAN - DEMOLITION
SCALE: 1/8" = 1'-0"

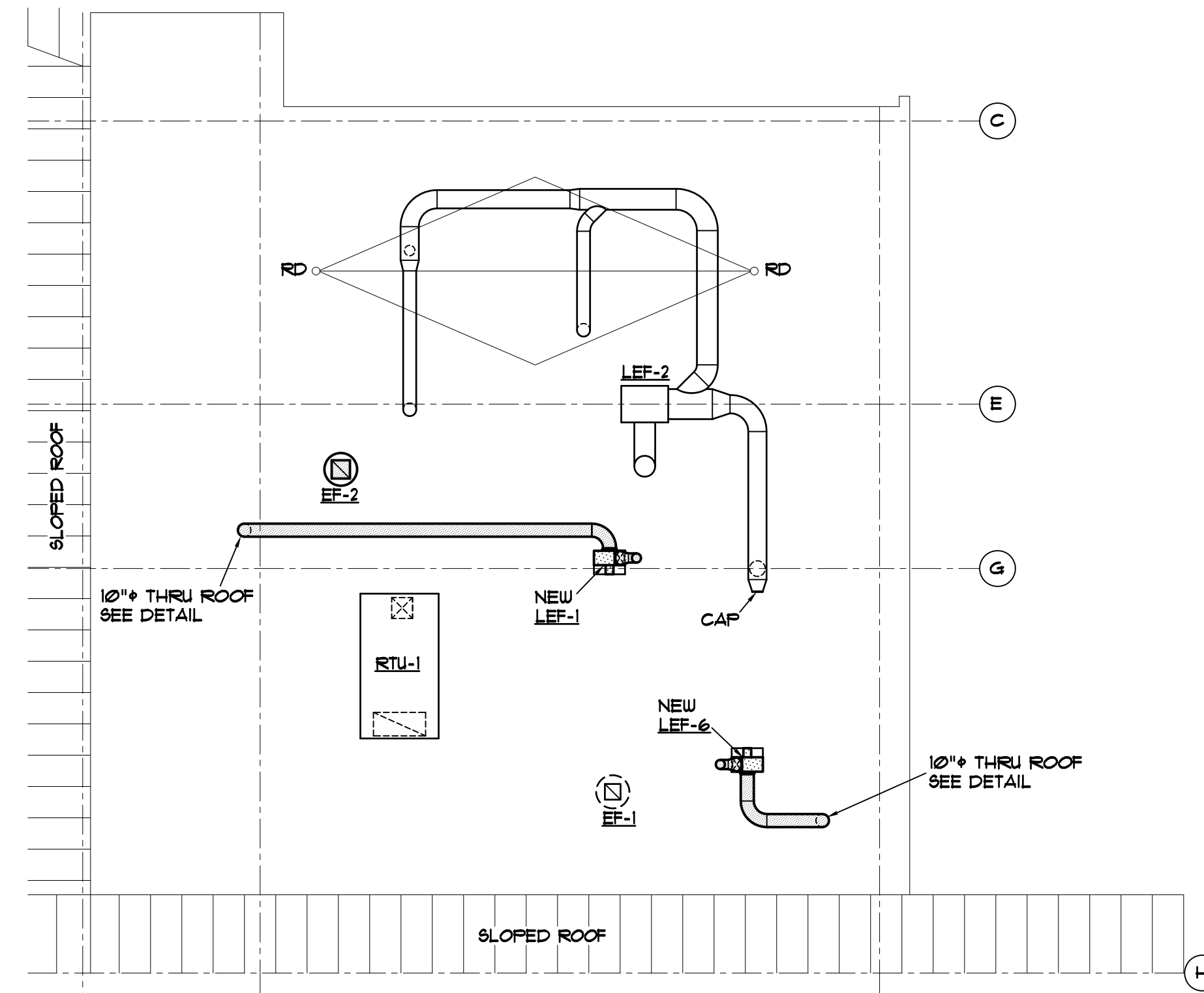


MECHANICAL DESIGN, INC.
4403 Broad River Road
Columbia, S.C. 29210
(803) 731-9534
(803) 731-9537 FAX

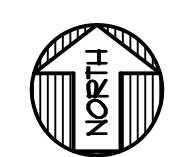
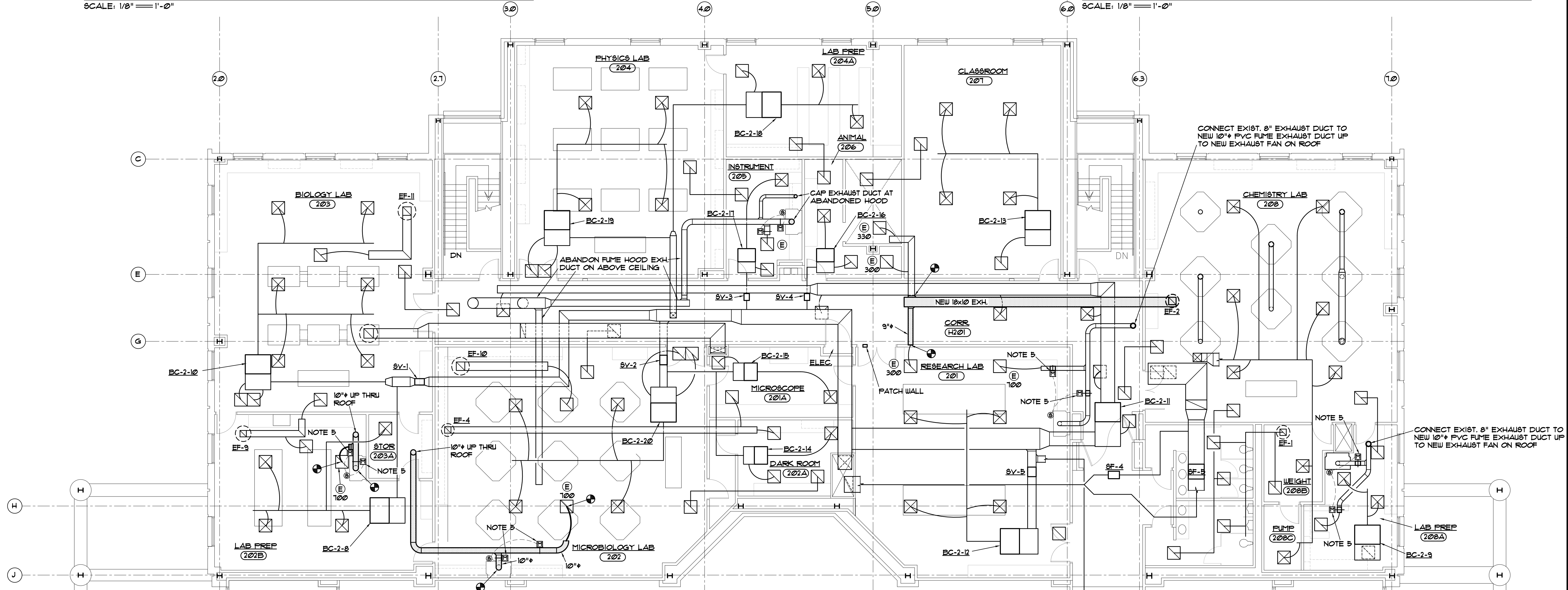
CONTACT: Danny Wilds
DATE: 05/01/15 COMM. NO. 153195



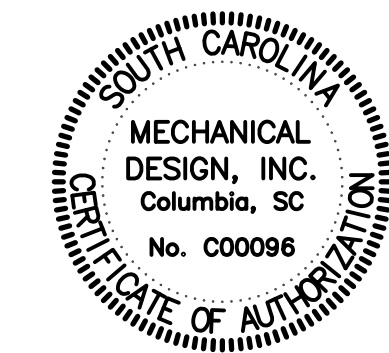
PARTIAL ROOF LEVEL MECHANICAL PLAN - RENOVATION
SCALE: 1/8" = 1'-0"



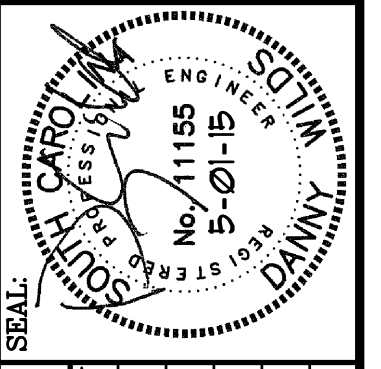
PARTIAL ROOF LEVEL MECHANICAL PLAN - RENOVATION
SCALE: 1/8" = 1'-0"



PARTIAL SECOND LEVEL MECHANICAL PLAN - RENOVATION
SCALE: 1/8" = 1'-0"



MECHANICAL DESIGN, INC.
4403 Broad River Road
Columbia, S.C. 29210
(803) 731-9834
(803) 731-9837 FAX
CONTACT: Danny Wilds
DATE: 05/01/15 COMM. NO. 153195



REV.	DESCRIPTION	DATE	CDW	CDW

PROJECT TITLE: USC LANCASTER - BRADLEY BLDG. LAB EXHAUST SYSTEM UPGRADES
S.C. STATE PROJ. NO. H37-9515
University of South Carolina