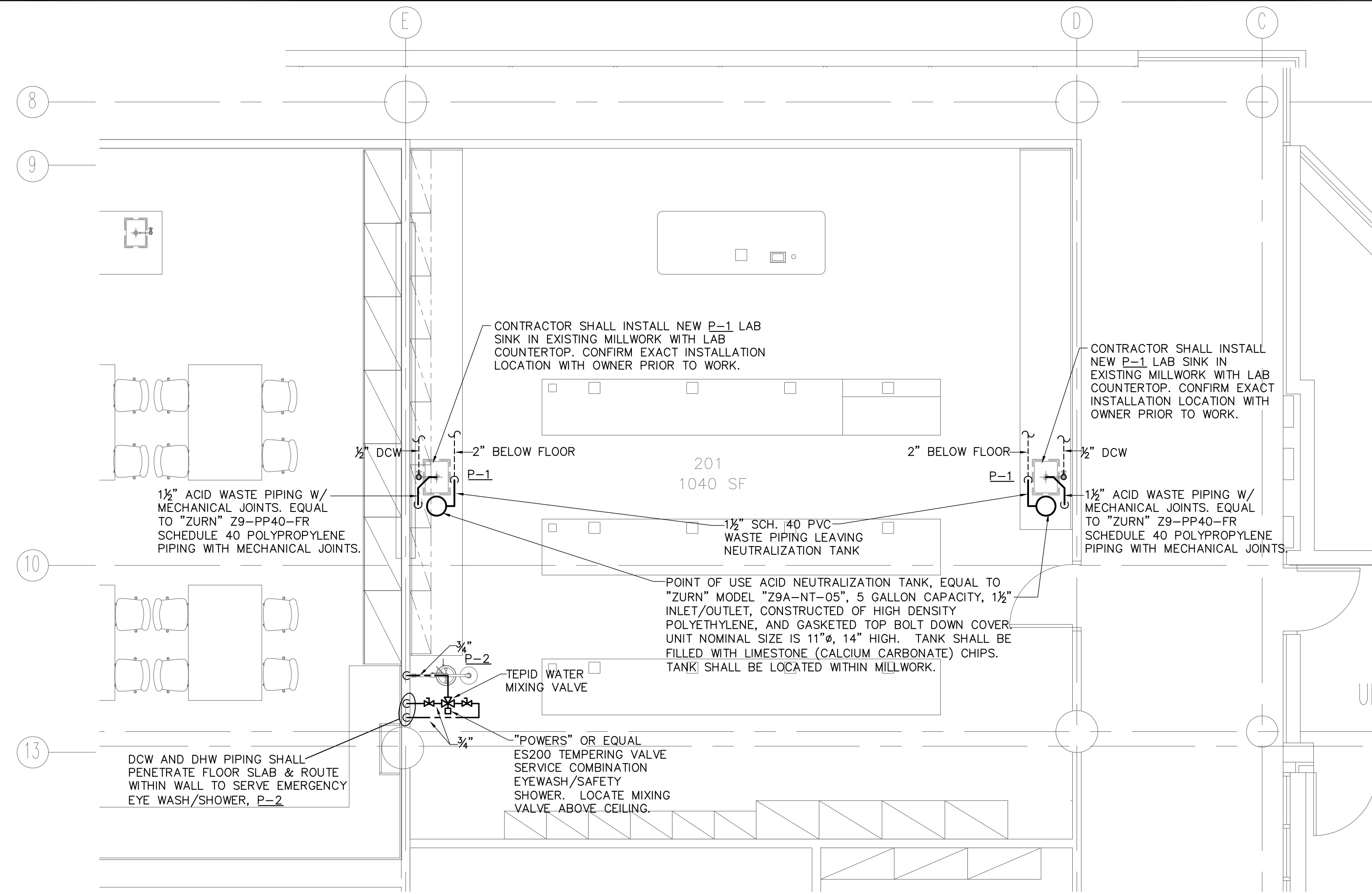
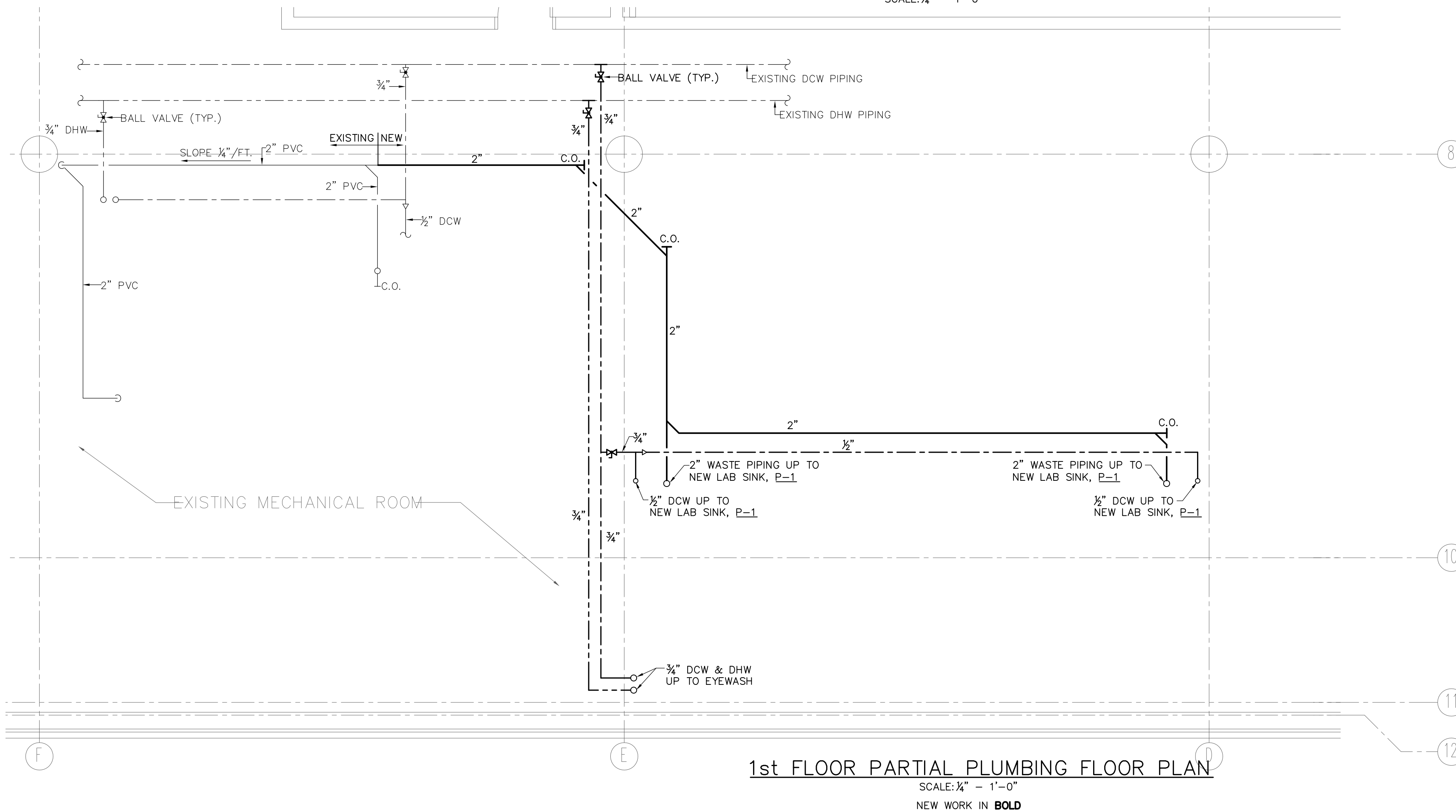


This drawing is the property of Peritus Engineers & Associates, Inc. and shall not be used or reproduced without their written permission. 2015 PERITUS ENGINEERS & ASSOCIATES, INC.



2nd FLOOR PARTIAL PLUMBING FLOOR PLAN
SCALE: 1/4" = 1'-0"



1st FLOOR PARTIAL PLUMBING FLOOR PLAN
SCALE: 1/4" = 1'-0"
NEW WORK IN BOLD

PLUMBING FIXTURE SCHEDULE

ITEM	FIXTURE	COLD WATER	HOT WATER	WASTE	REMARKS
P-1	LAB SINK	1/2"	---	2"	
P-2	COMBINATION EYE WASH/SHOWER	3/4"	3/4"	---	

PLUMBING GENERAL NOTES

THE CONTRACTOR SHALL CO-ORDINATE INSTALLATION WITH OTHER TRADES.

THE CONTRACTOR SHALL FIELD VERIFY ALL DIMENSIONS SHOWN.

ALL PLUMBING WORK SHALL CONFORM TO THE 2012 INTERNATIONAL PLUMBING CODE, OSHA & ADA REQUIREMENTS, AND ALL APPLICABLE LOCAL CODES AND ORDINANCES.

THE CONTRACTOR SHALL FIELD VERIFY AND LOCATE ALL EXISTING WASTE & WATER PIPING BEFORE STARTING THE PROJECT.

ALL PIPING ARRANGEMENTS & ROUTINGS AS SHOWN ARE DIAGRAMMATIC AND MAY REQUIRE ALTERATIONS DIFFERENT FROM THAT SHOWN IN ORDER TO ACCOMMODATE STRUCTURAL/ARCHITECTURAL FEATURES. THE CONTRACTOR SHALL VERIFY AND MAKE ALTERATIONS OR REVISIONS AS REQUIRED.

PLUMBING LEGEND

ITEM	DESCRIPTION
C.O.	CLEAN OUT
D.C.W.	DOMESTIC COLD WATER
D.H.W.	DOMESTIC HOT WATER
S.S.	SANITARY SEWER
---	DOMESTIC COLD WATER PIPING
---	DOMESTIC HOT WATER PIPING (110°F)
---	SANITARY SEWER or WASTE PIPING
⊕	BALL VALVE
→	CLEAN OUT

PLUMBING SPECIFICATIONS

GENERAL PROVISIONS

- Codes - The following codes are imposed as applicable to the work.
 - South Carolina Department of Health & Environmental Control
 - International Building Code 2012
 - International Plumbing Code 2012
 - South Carolina Barrier Free Building Design Standard which includes ANSI A117.1 (86)
- Equipment Labeling - all electrically powered equipment to be U.L. labeled or similar testing agency.
- Maintenance Manuals - Provide Owner with (3) three complete sets of bound product and maintenance data.

SYSTEMS INSULATION

- Domestic Water Piping -
 - Pipe size 1-1/2 inches and smaller - 1" thickness.
 - Pipe size 2 inches and larger - 1-1/2" thickness.
 - Insulation to be Owens Corning Fiberglas ASJ/SSL-11, U.L. Listed.
- Acceptable Manufacturers - Certainteed, Knauf, and Owens-Corning.

DOMESTIC WATER PIPING SYSTEM

- Piping - Copper tube ASTM B88, Type L, hard-drawn temper.
- Valves - 150 lb. bronze ball valves. Acceptable manufacturers: Hammond, Nibco-Scott, Grinnell and Crane.
- Escutcheon - Heavy chrome plated brass.
- Sterilization - as required by South Carolina Department of Health & Environmental Control.

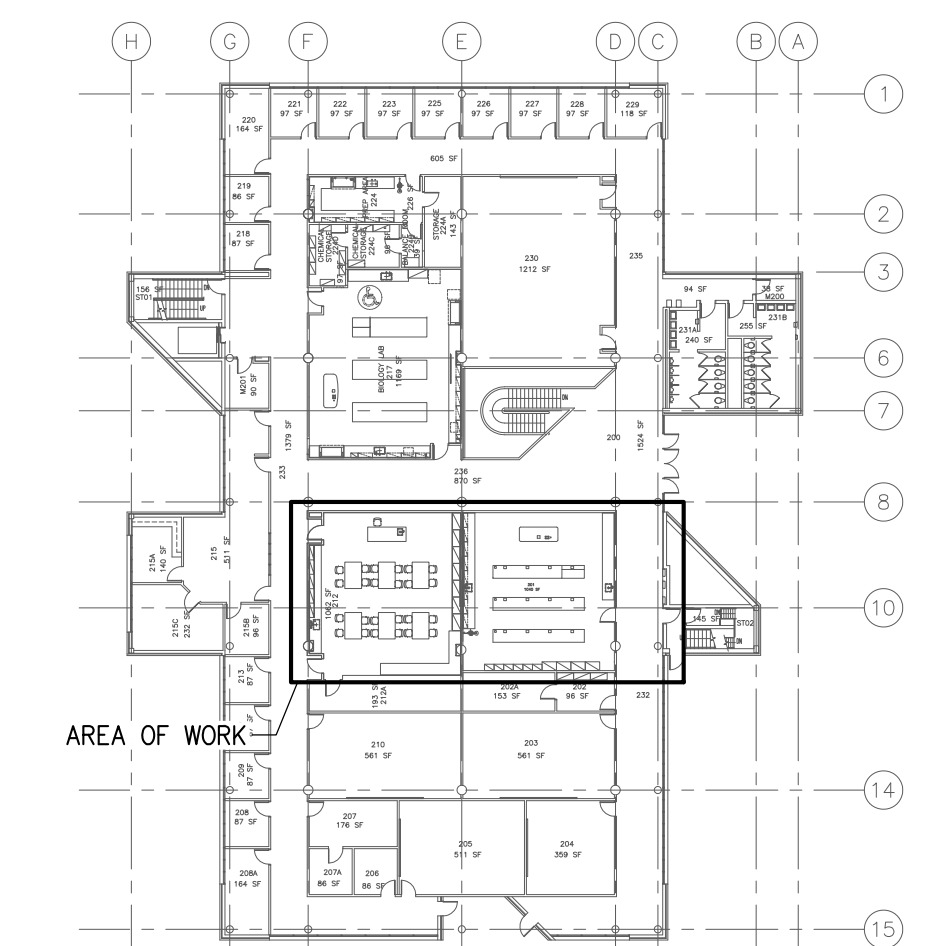
SOIL AND VENT PIPING SYSTEM

- Piping & Fittings - Schedule 40 PVC Standard weight, solid wall. Cellular core PVC pipe is not acceptable.
- Escutcheons - Heavy chrome plated brass.
- In general route new piping in building from fixtures, and through neutralization tanks, to existing soil piping located overhead in mechanical room.
- Cleanouts - Acceptable manufacturers: Josam, Zurn, Wade, J.R. Smith.

PLUMBING FIXTURE SPECIFICATIONS

P-1 Lab Sink "LOC" Scientific Model L24C nominal 18" long x 14" wide, epoxy resin drop-in sink. Sinks shall be epoxy resin construction. Sinks shall be installed in existing lab countertops. Provide "LOC" Scientific Model L611UB single faucet deck mounted with vacuum breaker. Provide grid drain, strainer, tail piece, and P-trap for connection to acid waste piping. "McGuire" No. H2165 chrome plated angle supply stops.

P-2 Combination Eye Wash/Safety Shower: "Guardian" Model G1902P Emergency Eye Wash Station & Drench Shower. Fixture shall be equipped with ANSI compliant identification sign and meet ANSI Standard Z358.1-1998 Specifications. Shower shall be constructed of high-impact plastic and eye wash fountain shall be of ABS plastic, packaged into one multi-purpose unit. Provide 1 1/4" hot dip galvanized steel piping fittings and 9" aluminum floor flange. Refer to drawings for associated hot/cold tempering valve.



KEY PLAN
NO SCALE

REVISIONS

NO.	DATE	BY	DESCRIPTION
0	4-8-15	JCP	ISSUED FOR BID

PERITUS ENGINEERS & ASSOCIATES, INC.
 101 PERITUS DRIVE • SPARTANBURG, SOUTH CAROLINA 29176
 (803) 583-1111

SMITH LAB 201
UNIVERSITY OF SOUTH CAROLINA UPSTATE
SPARTANBURG, SOUTH CAROLINA

DESIGN	JCP	DRAWN	LDF
CHECKED	JCP		
DATE	04/08/15		
SHEET	P-1		
1 OF 1 SHEETS			