

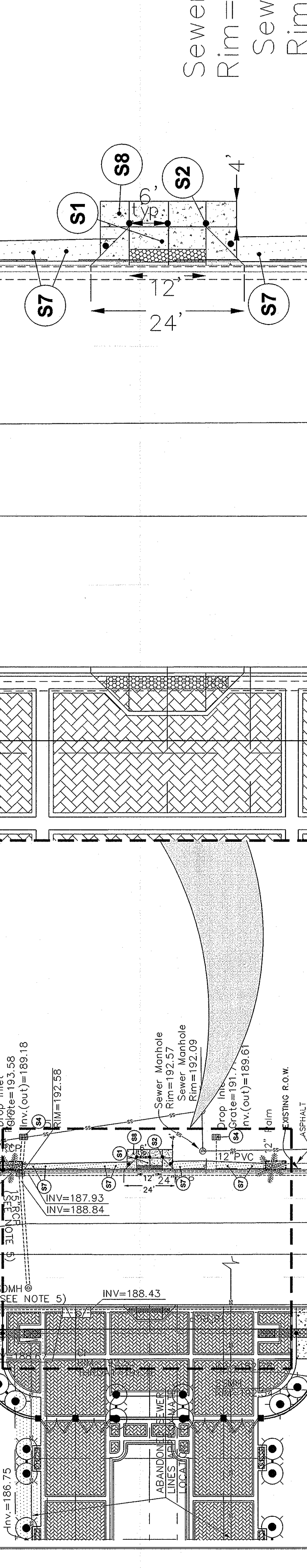
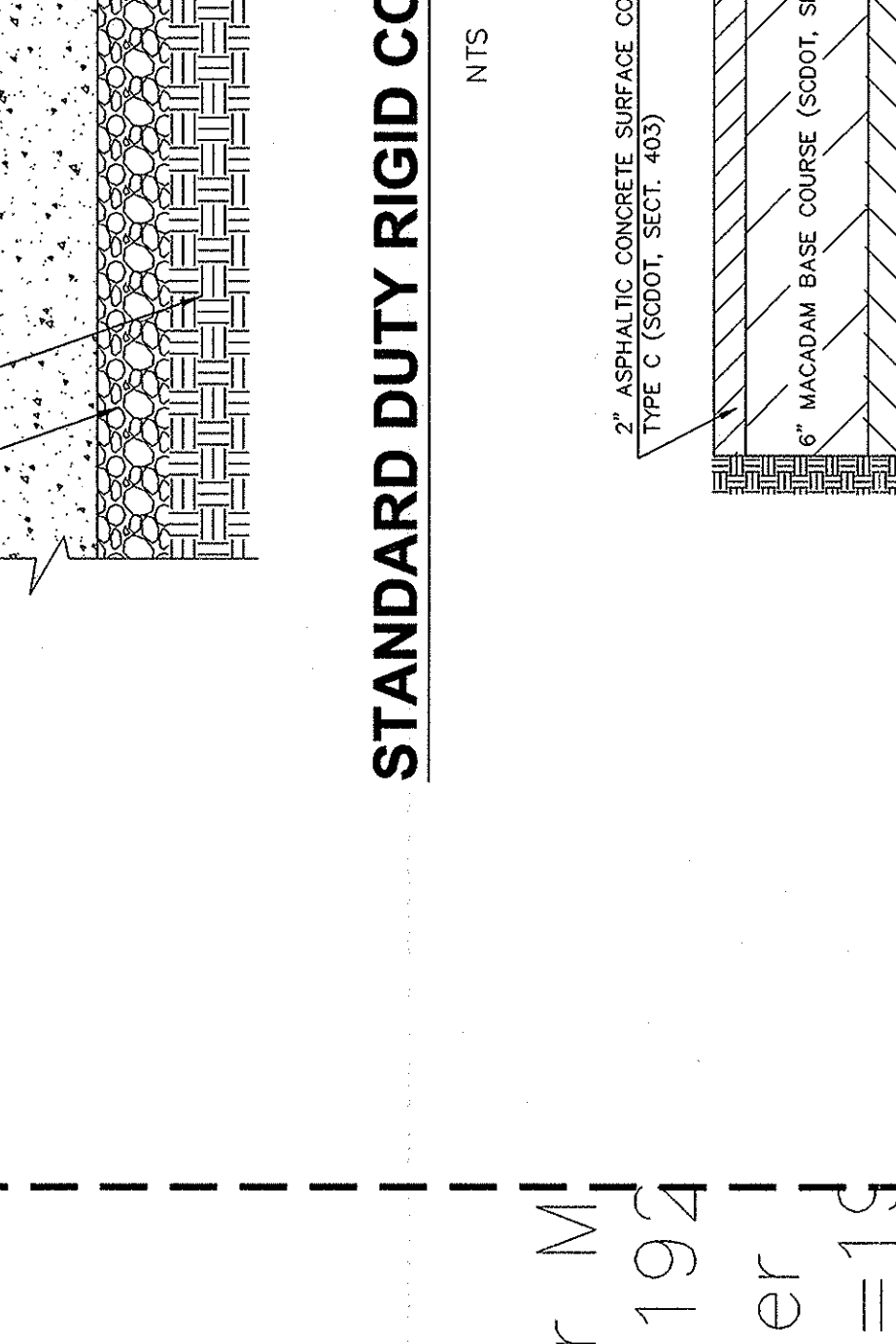
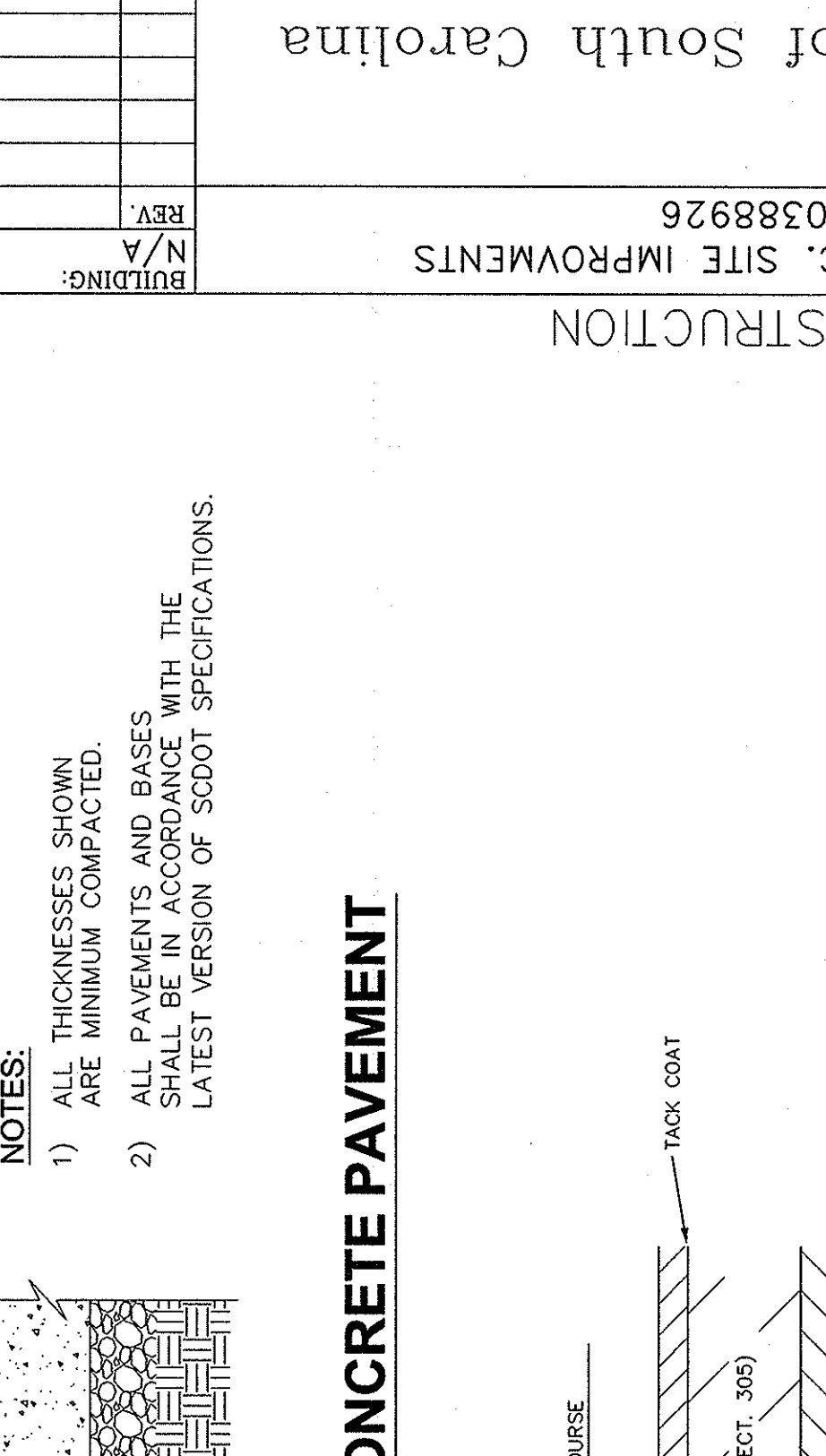
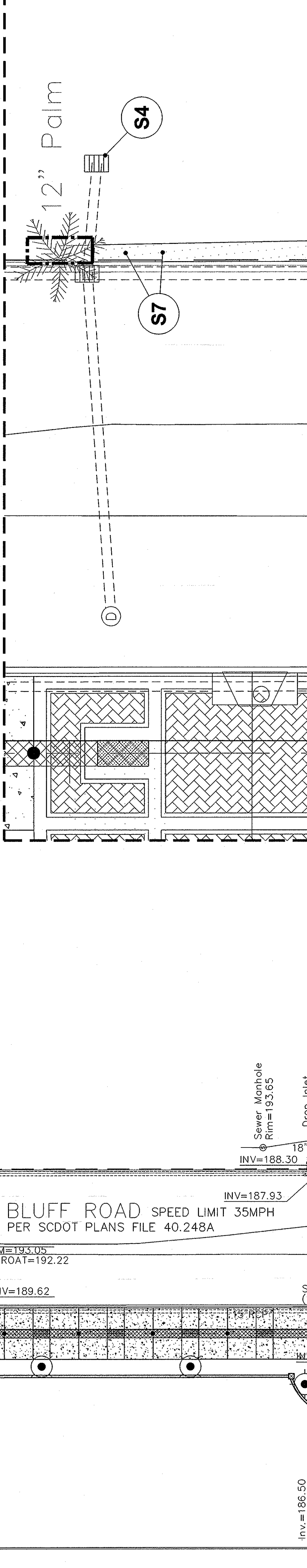
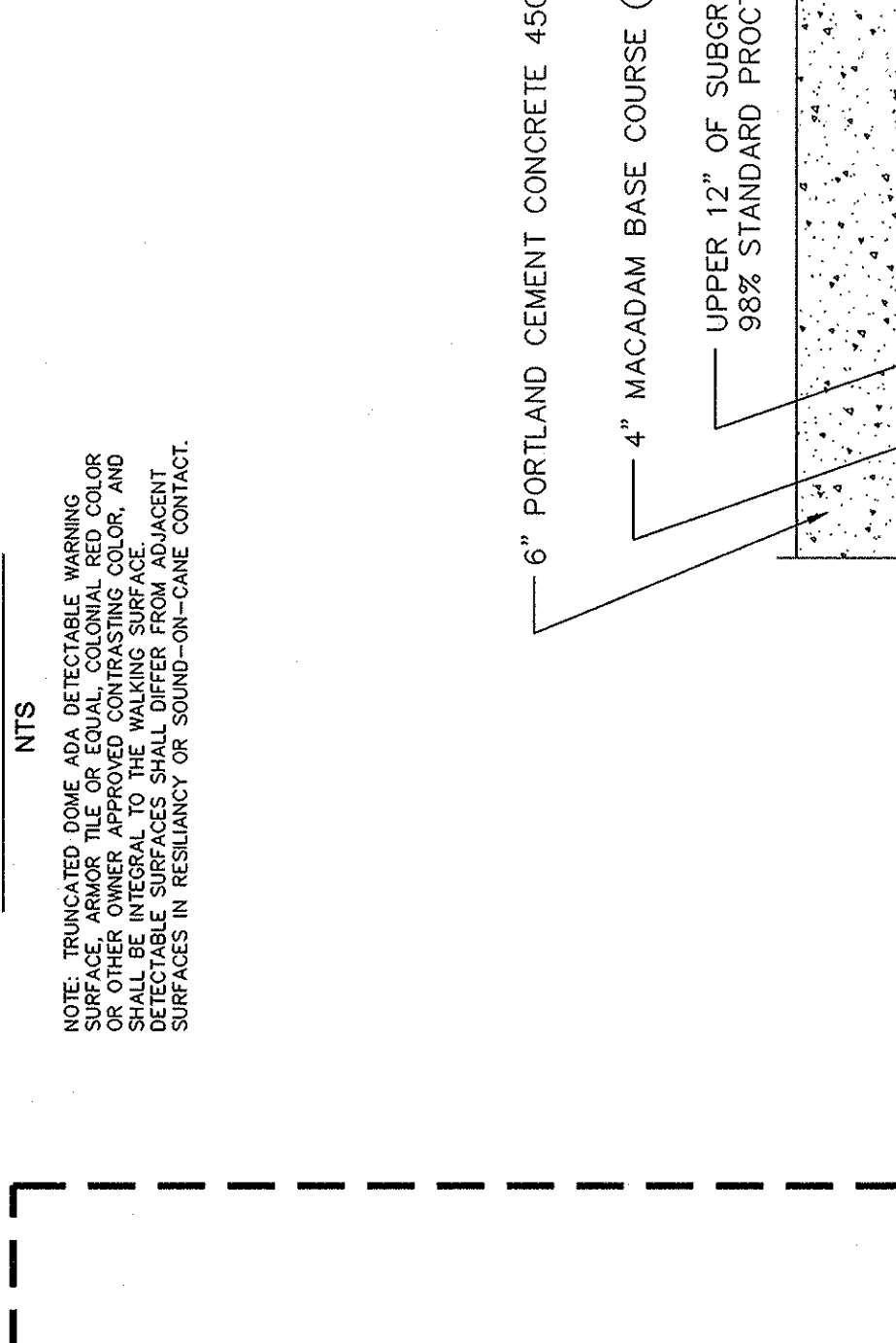
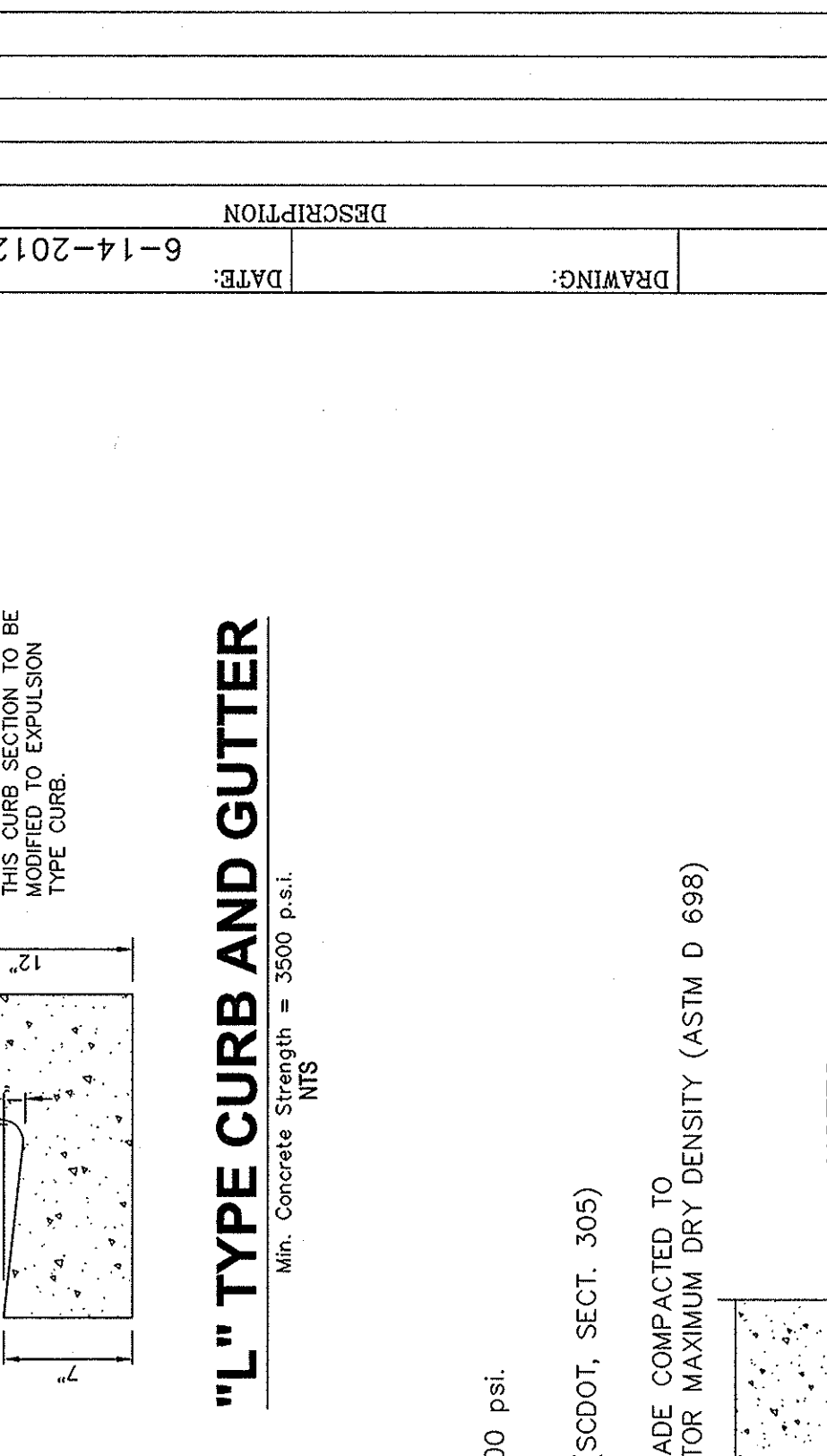
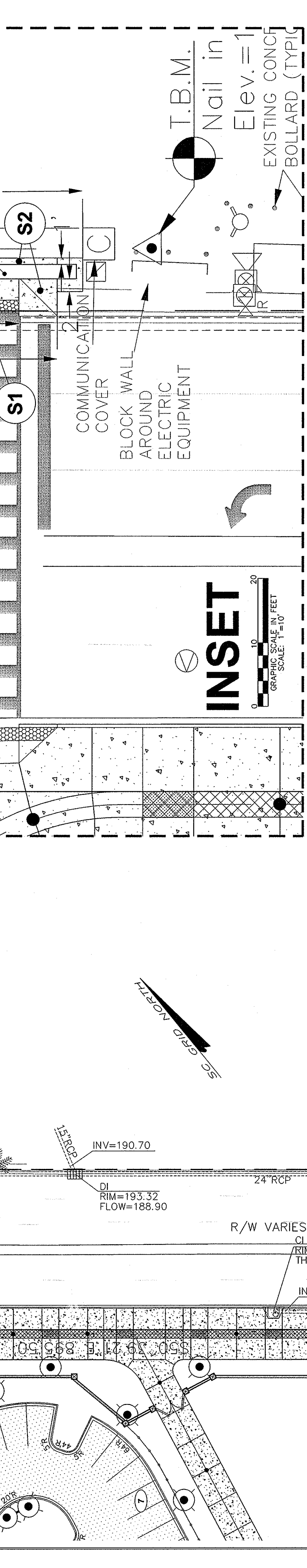
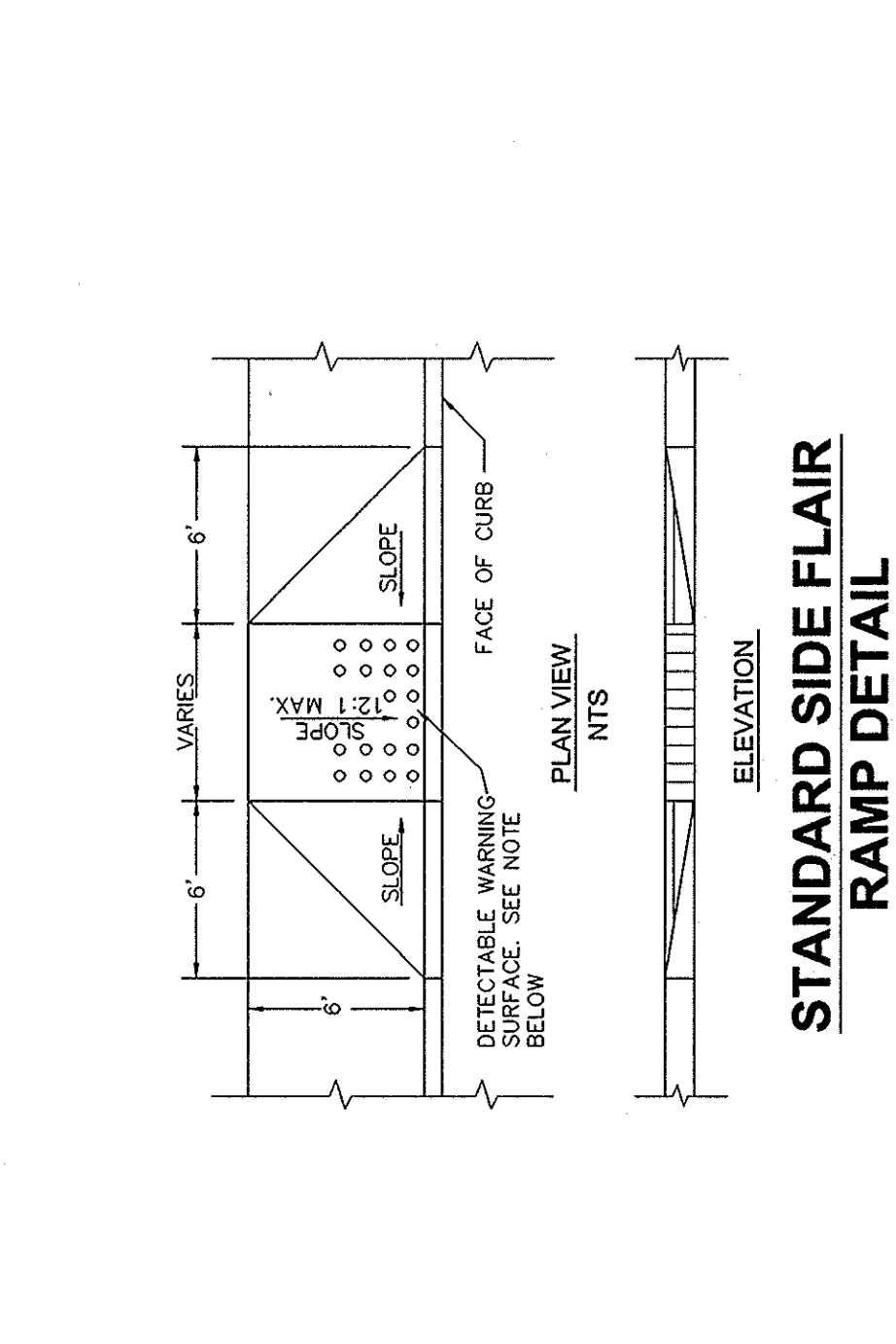
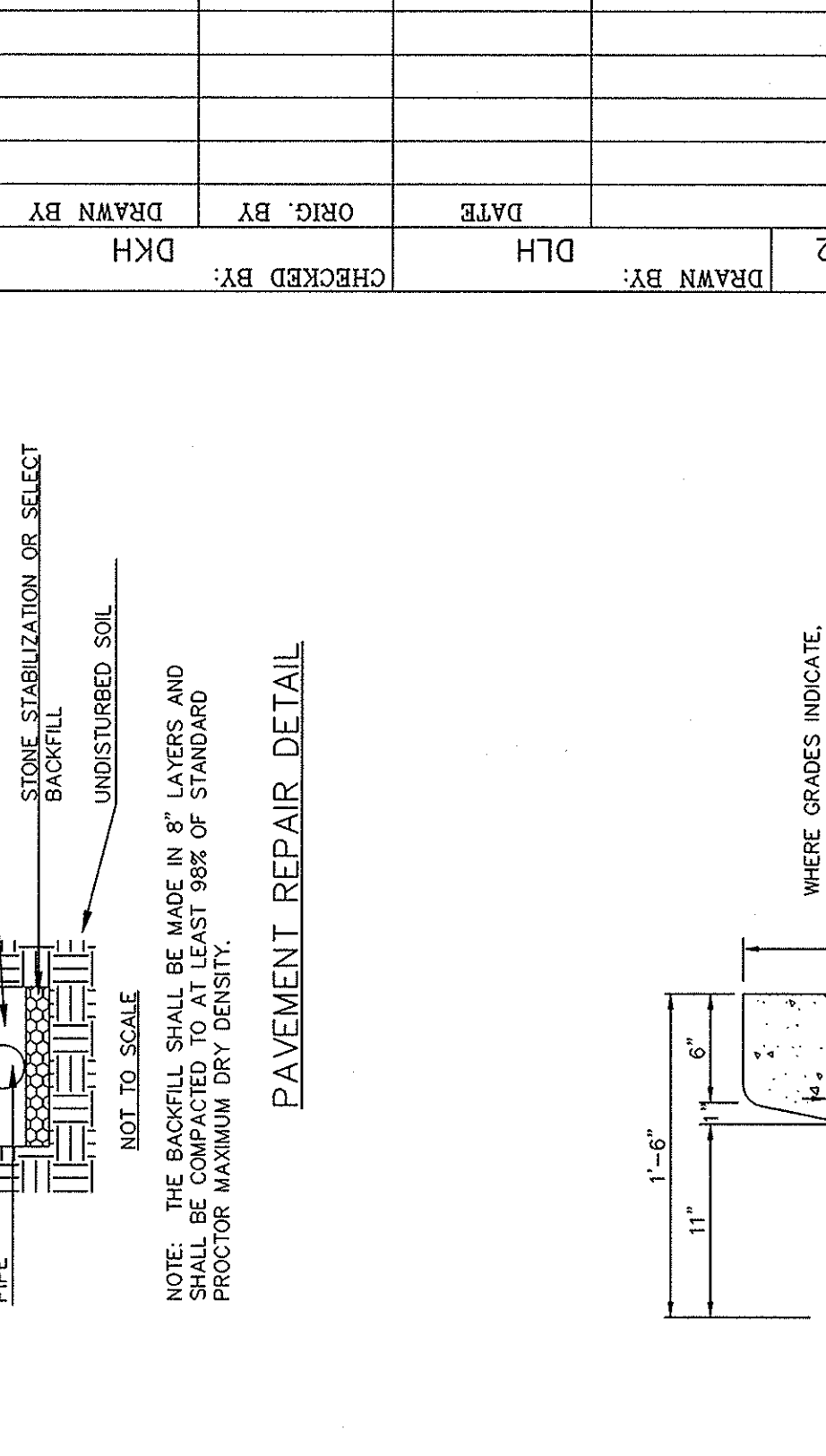
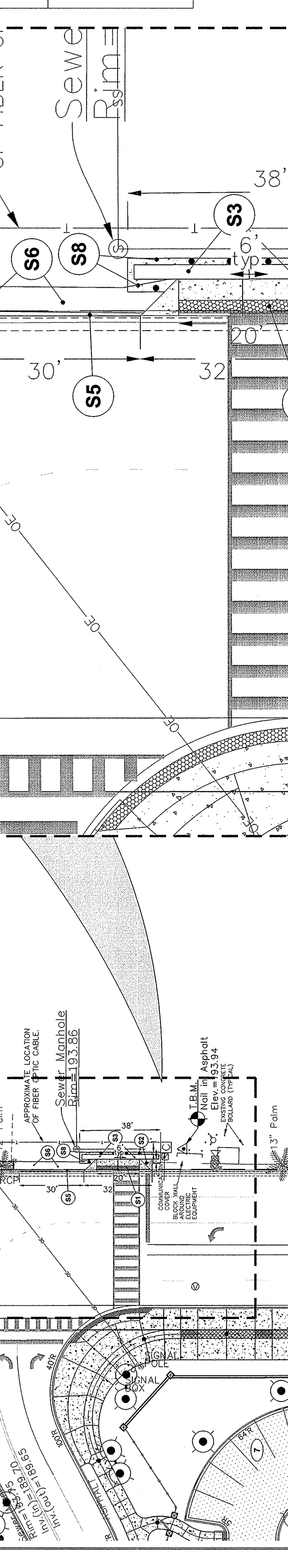
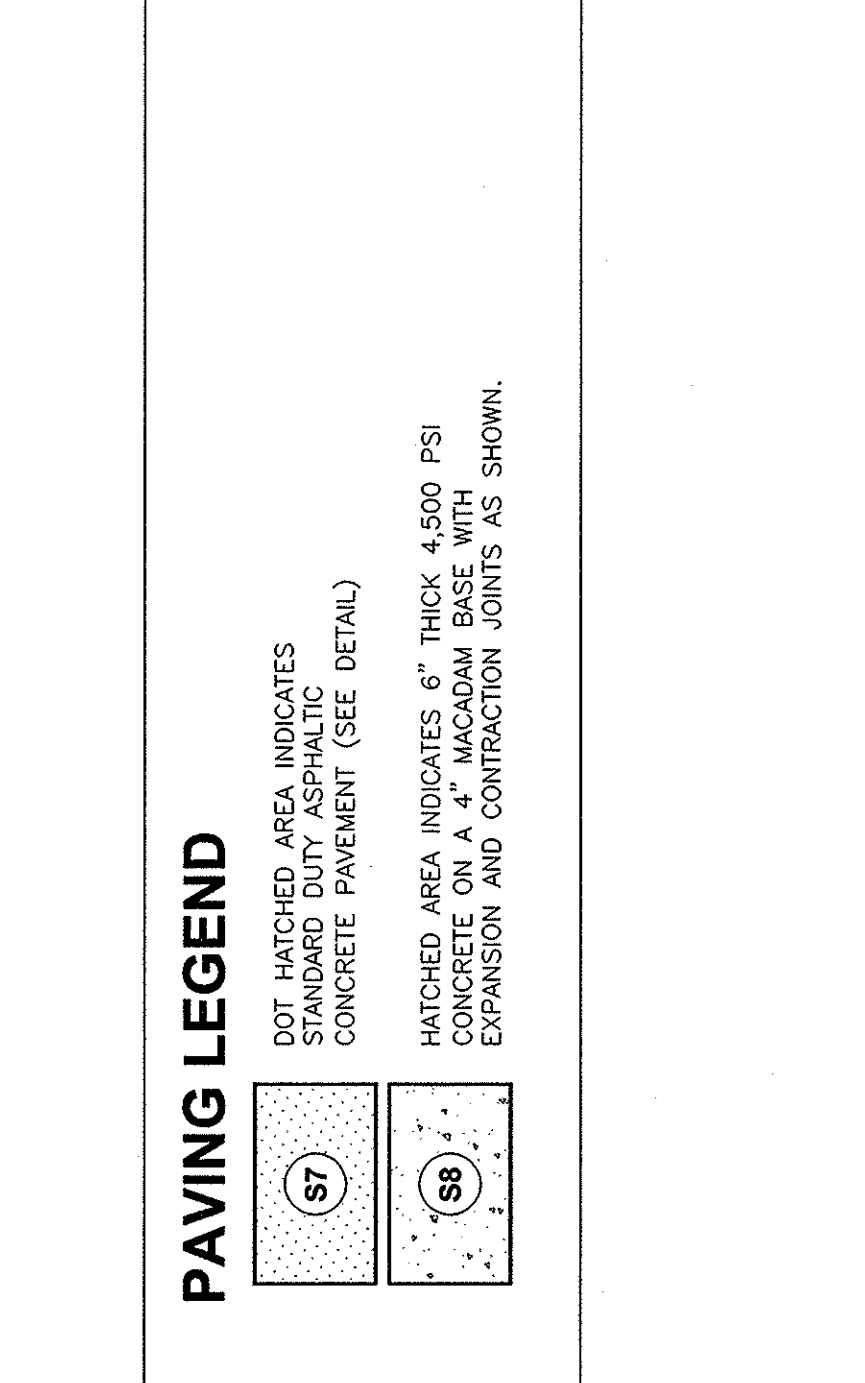
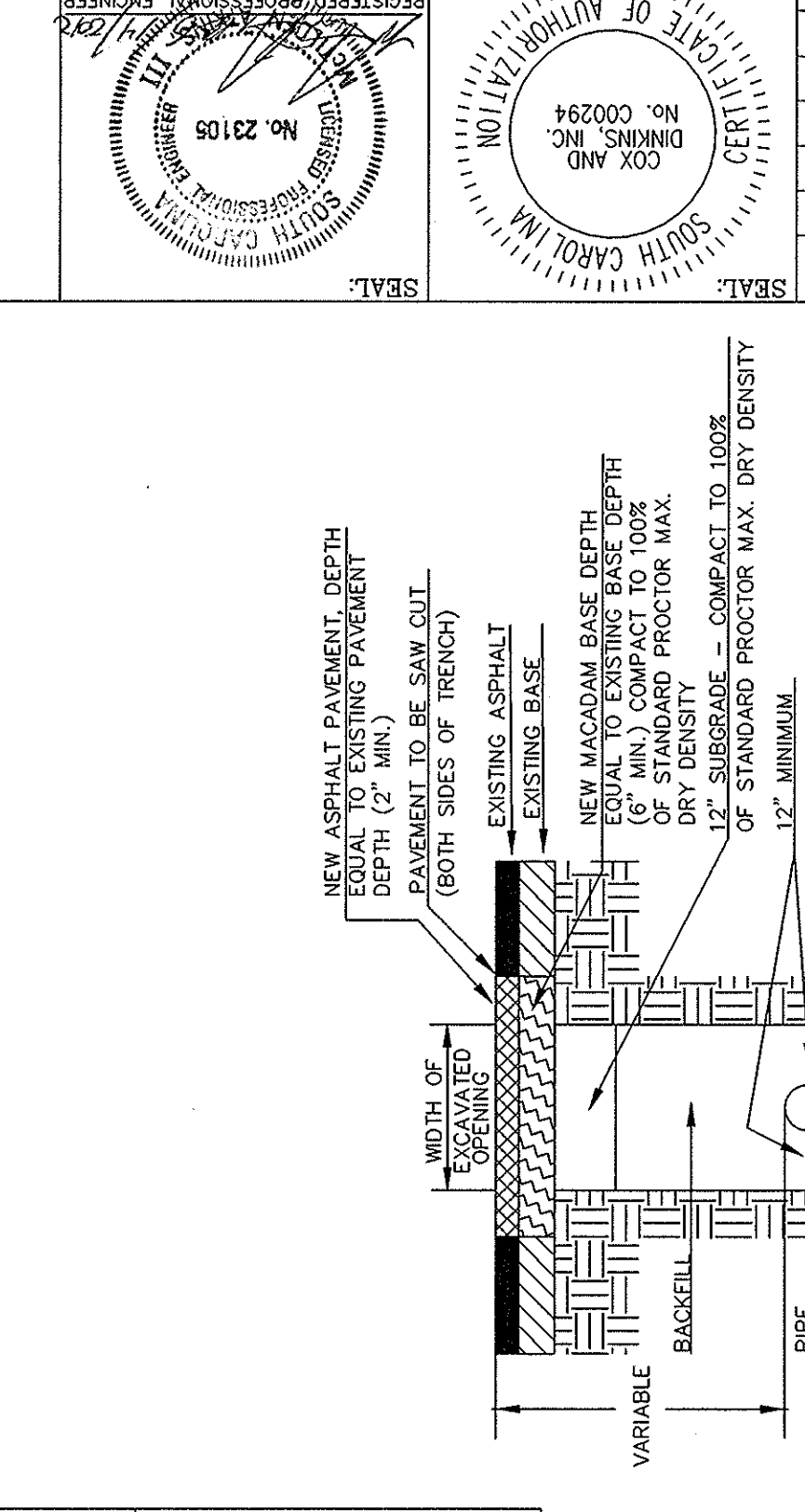
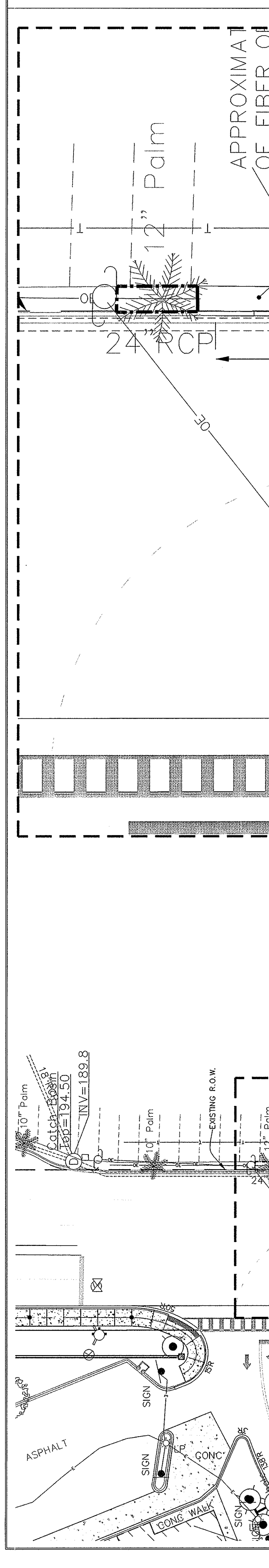
**COX AND DINKINS**  
ENGINEERS - SURVEYORS  
724 BELLINE BLVD.  
COLUMBIA, SC 29205  
Fax: 803-765-0993  
Email: cdxinfo@coxanddinkins.com  
CAD PROJECT# 1693

**CODED SITE NOTES**

- S1 CONCRETE HANDICAP RAMP WITH TRUNCATED DOME SURFACE. (TYPICAL)
- S2 REMOVABLE PIPE BOLLARD OWNER PROVIDED. CONTRACTOR INSTALLED. (TYPICAL OF 1)
- S3 TYPICAL CORP. PRECAST COMMUNICATION TRENCH WITH ACCESS LID. OR APPROVED EQUAL. SEE DETAIL.
- S4 INSTALL CATCH BASIN INLET PROTECTION PRIOR TO START OF CONSTRUCTION. REMOVE WHEN CONSTRUCTION COMPLETED. (SEE DETAIL)
- S5 18" CONCRETE CURB AND GUTTER SECTION. SEE DETAIL.
- S6 12" WIDE LANDSCAPE AREA. AREA SHALL CONTAIN BEDDING, MULCH AND SHRUBS TO UTILIZE EXISTING SHRUBS. CONTRACTOR SHALL REPLACE WITH SAME SPECIES 3-GALLON SIZED PLACED 4' O.C.

**PAVING LEGEND**

- S7 DOT MARKED AREA INDICATES CONCRETE PAVEMENT (SEE DETAIL)
- S8 HATCHED AREA INDICATES 6" THICK 4,500 PSI CONCRETE ON A 4" MACADAM BASE WITH EXPANSION AND CONTRACTION JOINTS AS SHOWN.



**NOT FOR CONSTRUCTION**

PROJECT TITLE: WB STADIUM MSC. SITE IMPROVEMENTS  
CP00344579/FM00388926

DATE: 6-14-2012

DESCRIPTION: DRAWING: CHECKED BY: DKH  
DATE: DLH  
ORIG. BY: DATE: DRAWN BY:

UNIVERSITY OF SOUTH CAROLINA

SHEET: 2 OF 4  
SHEET IN SET: N/A

**REFERENCES:**

- PLAT PREPARED FOR UNIVERSITY OF SOUTH CAROLINA, BY COX AND DINKINS, INC. DATED JANUARY 21, 2009.
- PLAT OF BOUNDARY SURVEY AND TOPOGRAPHIC MAP OF RICHLAND COUNTY TAX PARCELS RI1205-01-05A, RI1205-01-05, & RI1205-01-06, PREPARED FOR THE UNIVERSITY OF SOUTH CAROLINA, BY REEDER SMITH ASSOCIATES, DATED NOVEMBER 26, 2006, REISED DECEMBER 11, 2008.

**NOTES:**

- THE LOCATIONS OF OTHER UNDERGROUND UTILITIES ARE UNKNOWN.
- THE CONTOUR INTERVAL = ONE (1) FOOT.
- ALL DIMENSIONS ARE TO THE FACE OF CURB UNLESS OTHERWISE NOTED.
- CONTRACTOR SHALL VERIFY ALL DIMENSIONS AND LOCATIONS OF ALL UNDERGROUND UTILITIES AND MANHOLE LOCATIONS EVERY 10 FEET FOR AN UPDATE TO UTILITY LOCATIONS.

**NOTE:**

THE PALMETTO UTILITY PROTECTION SERVICE, INC. HAS CONDUCTED VISUAL SURVEYS OF EXISTING UNDERGROUND UTILITIES AND STRUCTURES WAS OBTAINED FROM LOCAL UTILITY COMPANIES. THE INFORMATION IS FOR INFORMATIONAL PURPOSES ONLY AND IS NOT TO BE CONSIDERED AS A GUARANTEE OF ACCURACY OR A WARRANTY OF ANY KIND. THE CONTRACTOR SHALL VERIFY THE LOCATION AND DEPTH OF ALL UTILITIES AND STRUCTURES PRIOR TO CONSTRUCTION. THE CONTRACTOR SHALL BE RESPONSIBLE FOR OBTAINING ALL NECESSARY PERMITS AND APPROVALS FROM ALL APPLICABLE AGENCIES. THE CONTRACTOR SHALL BE RESPONSIBLE FOR OBTAINING ALL NECESSARY PERMITS AND APPROVALS FROM ALL APPLICABLE AGENCIES. THE CONTRACTOR SHALL BE RESPONSIBLE FOR OBTAINING ALL NECESSARY PERMITS AND APPROVALS FROM ALL APPLICABLE AGENCIES.

**The Palmetto Utility Protection Service, Inc.**  
3 DAYS BEFORE STARTING IN SOUTH CAROLINA  
CALL 811