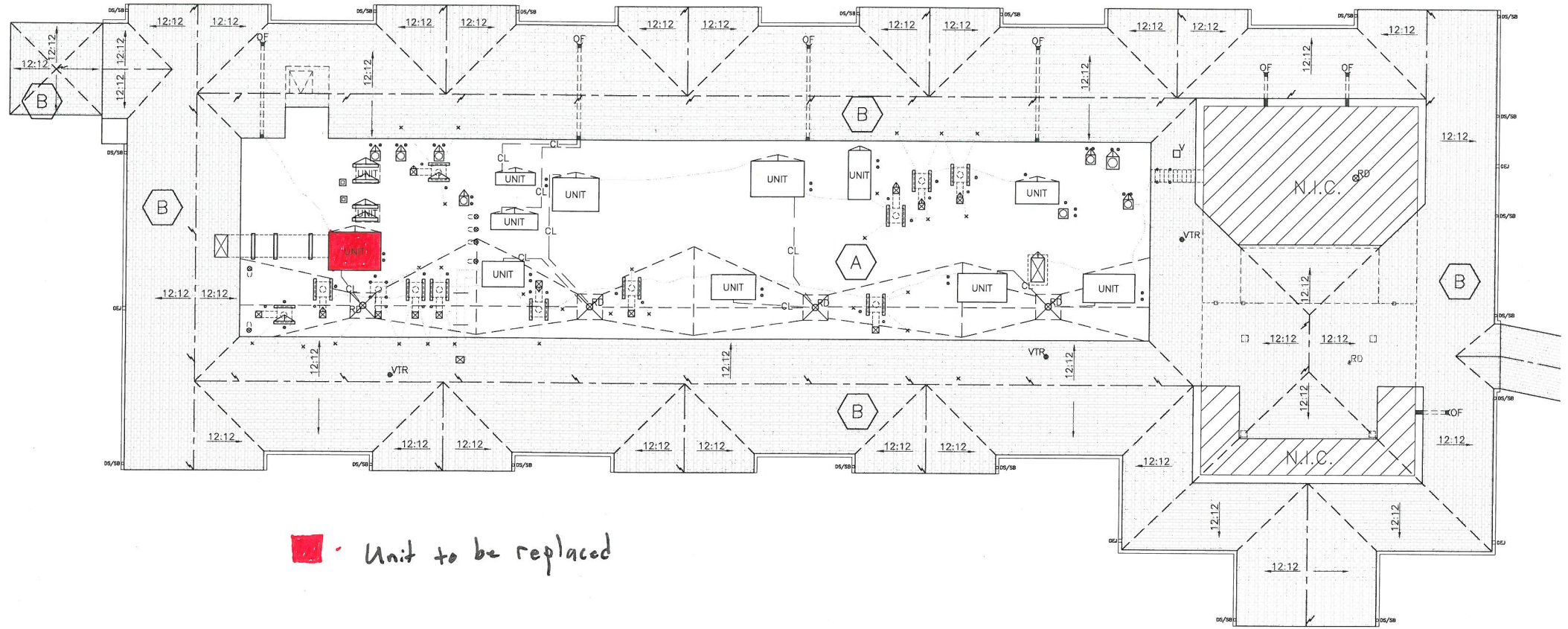




E
D
C
B
A



■ Unit to be replaced

- TAPERED INSULATION NOTES**
1. AS NOTED IN SECTION 07 22 05 ROOF INSULATION, THE PRIMARY SLOPE FOR INDICATED ROOF AREAS SHALL BE PROVIDED WITH TAPERED INSULATION AT 1/8" PER FOOT.
 2. SECONDARY SLOPE (CRICKETS, SADDLES, SUMPS) SHALL PROVIDE A FINISHED SLOPE OF NOT LESS THAN 1/4":1'.
 3. ALL PENETRATIONS/TERMINATIONS SHALL BE RAISED TO PROVIDE MINIMUM 8" BASE FLASHING HEIGHT.
 4. INSULATION THICKNESSES SHALL BE COORDINATED WITH AND MATCH NAILER THICKNESSES AND ADJACENT INSULATION THICKNESSES WITHIN A 1/4" TOLERANCE IN ALL DIRECTIONS.
 5. AT DRAINAGE LOCATIONS ENSURE INSULATION TAPERS UP FROM DRAIN A MINIMUM 1/4":1' AND A MAXIMUM 1":1'. PROVIDE TAPERED FILLER TO MATCH FIELD INSULATION THICKNESSES.
 6. PROVIDE A TAPERED CRICKET ON THE HIGH SIDE OF ALL NON-ROUND PENETRATIONS WIDER THAN 24".
 7. KEEP CRICKET VALLEYS A MINIMUM OF 12" AWAY FROM ALL PENETRATIONS TO ALLOW DRAINAGE.

TAPER ROOF PLAN

