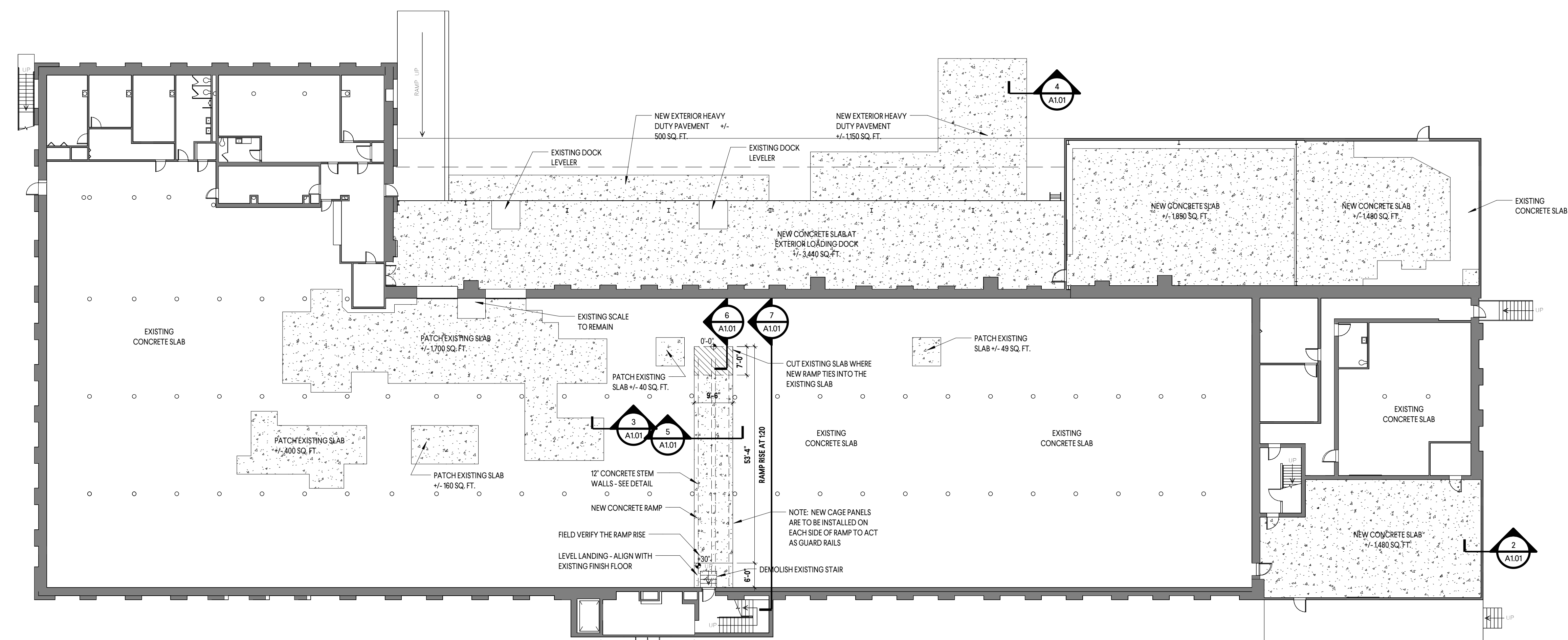


3/21/2019 7:58:32 AM

1 2 3 4 5 6 7 8 9 10

H G F E D C B A

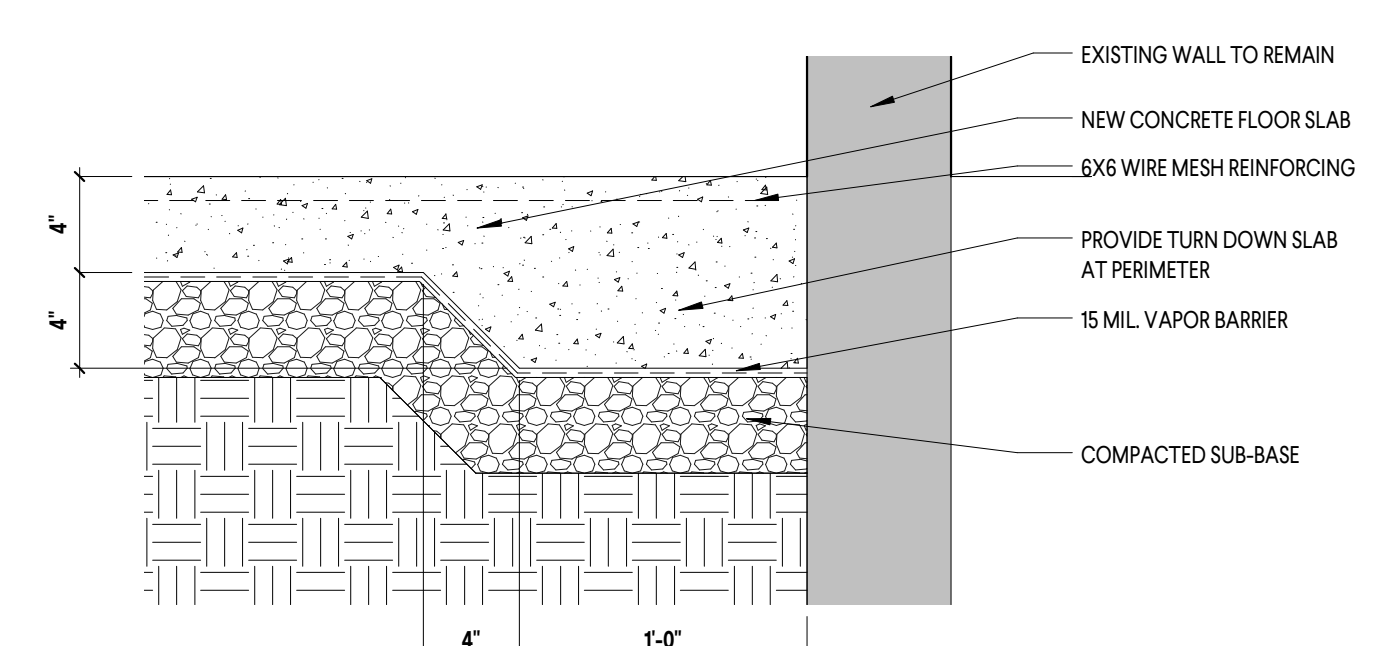


NOTE: A PORTION OF THE PROPERTY AT 1206 FLORA STREET IS IN A FLOOD PLAIN; HOWEVER THE SCOPE OF WORK THAT PERTAINS TO THIS PROJECT IS NOT WITHIN THE FLOOD PLAIN AREA. REFER TO THE FLOOD MAP INCLUDED IN THE SPECIFICATION SECTION 01 10 00 - SUMMARY OF WORK.

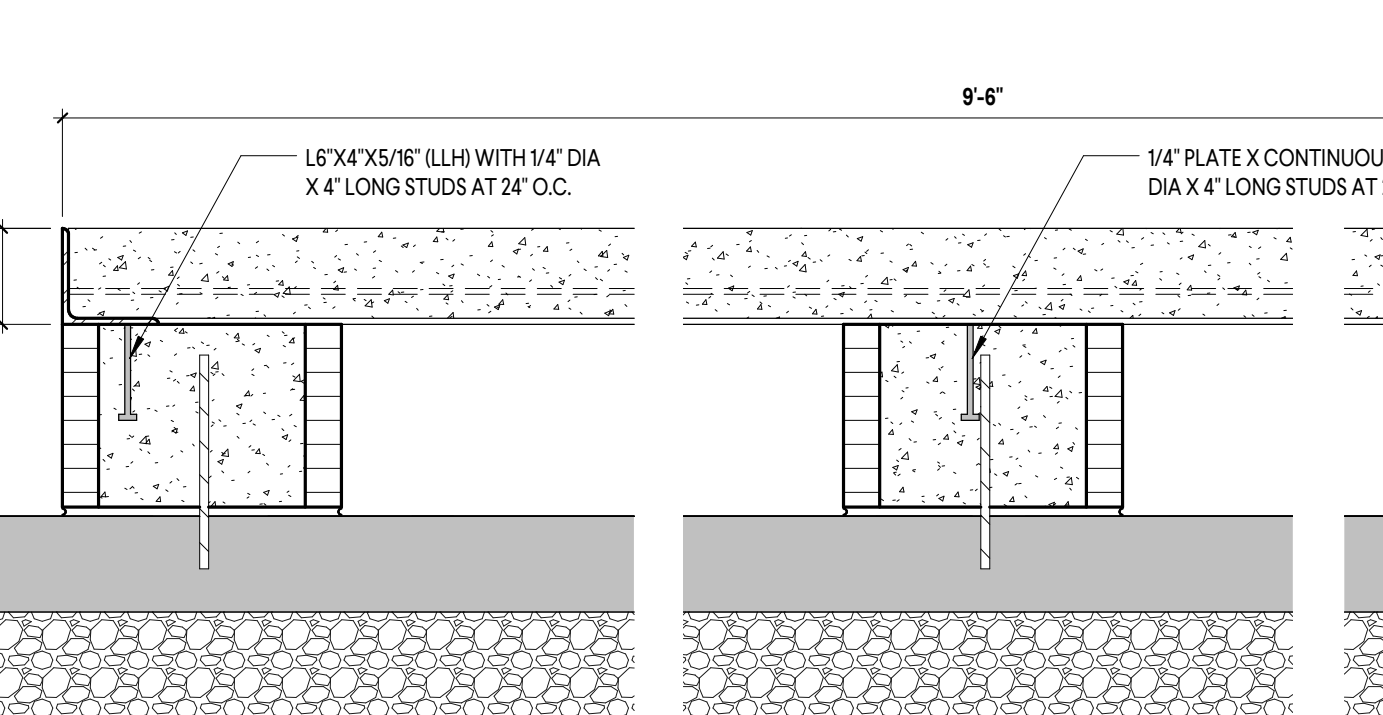
CONCRETE SLAB INFILL GENERAL NOTES:

1. THE SIZES AND LOCATIONS INDICATED ARE APPROXIMATE. FIELD VERIFY ALL INFILL LOCATIONS. CONTRACTOR IS RESPONSIBLE FOR ALL INFILL AREAS.
2. USE 3500 PSI (MINI) CONCRETE ON ALL INTERIOR AND EXTERIOR LOADING DOCK AND PAVING SLABS.
2. REMOVE EXISTING CRUSH AND RUN INFILL MATERIAL DOWN TO THE BOTTOM OF THE ADJACENT EXISTING SLAB. COMPACT THE EXISTING SUB-BASE TO 100% STANDARD PROCTOR MAXIMUM DRY DENSITY (AS NEEDED).
3. FOR INTERIOR SLABS ONLY, INSTALL 15 MIL VAPOR BARRIER OVER THE SUB-BASE PRIOR TO POURING CONCRETE SLAB.
4. CLEAN ALL EXISTING EDGES OF EXISTING CONCRETE SLABS AND REMOVE LOOSE CONCRETE AND DEBRIS. SAW CUT NEW EDGES AS REQUIRED IF SLAB IS LOOSE OR BROKEN.
5. INSTALL REINFORCING DOWELS AT SLAB INFILL LOCATIONS TO TIE THE NEW CONCRETE TO THE EXISTING SLABS.
6. AT NEW CONCRETE RAMP, THE STEM WALLS CAN BE FORMED AND POURED INSTEAD OF CMU CONSTRUCTION. G.C. OPTION. IF EXISTING CONCRETE SLAB IS 6" OR GREATER, STEM WALLS CAN BE 8" CMU IN LIEU OF 12" CMU AS NOTED IN THE DETAILS.

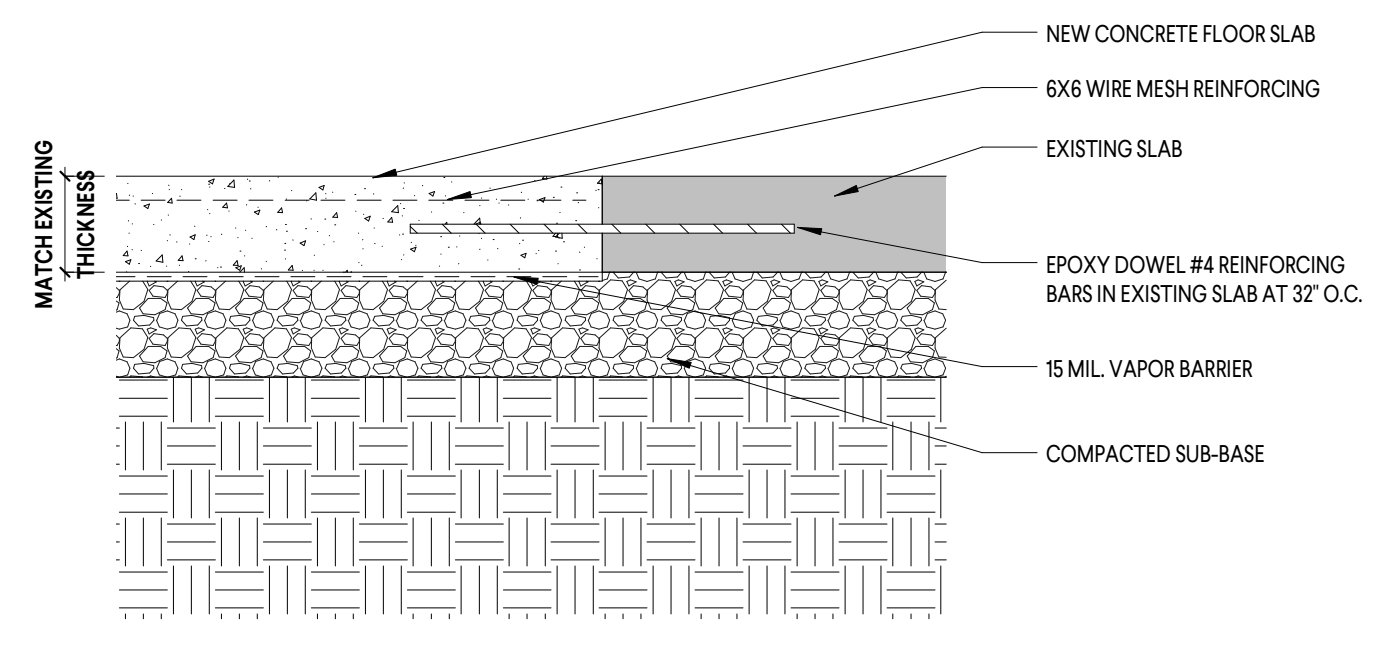
1 CONCRETE FLOOR INFILL PLAN
1/8" = 1'-0"



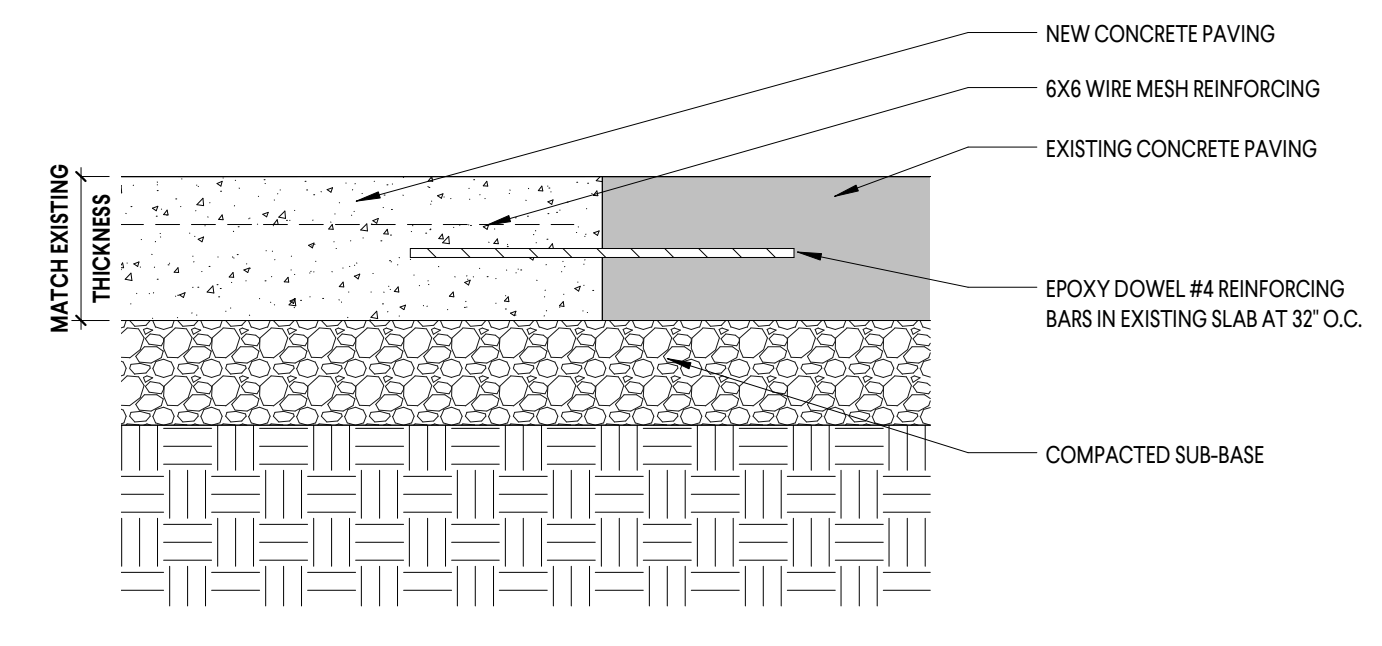
2 NEW CONCRETE SLAB DETAIL
1/12" = 1'-0"



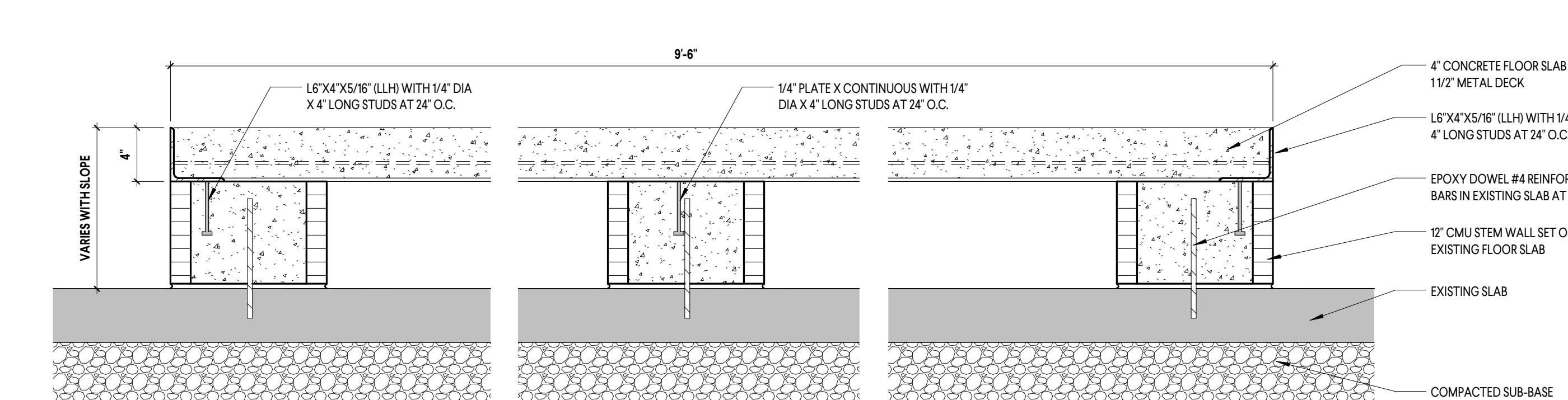
3 INTERIOR CONCRETE SLAB INFILL DETAIL
1/12" = 1'-0"



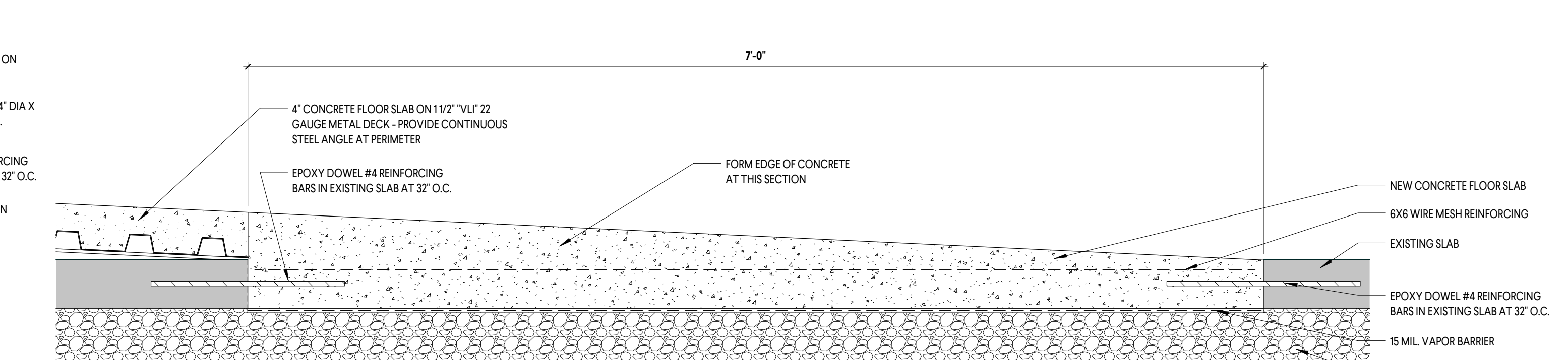
4 EXTERIOR CONCRETE SLAB INFILL DETAIL
1/12" = 1'-0"



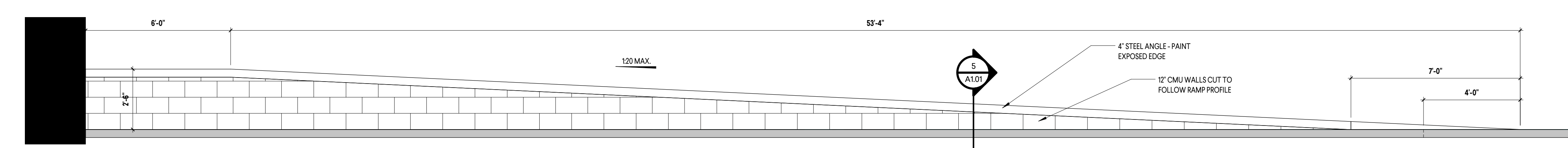
5 RAMP CROSS SECTION
1/12" = 1'-0"



6 RAMP BASE DETAIL
1/12" = 1'-0"



7 RAMP ELEVATION
3/8" = 1'-0"



UNIVERSITY OF SOUTH CAROLINA
1206 FLORA
RENOVATION PROJECT
GMC # ACOL180003
1206 FLORA STREET
CONCRETE SLAB INFILL

ISSUE	DATE
CONCRETE SLAB INFILL	03/20/2019

101 East Washington Street, Suite 200
Greenville, SC 29601
T 864.527.0460
GMCNETWORK.COM

UNIVERSITY OF SOUTH CAROLINA
1206 FLORA
RENOVATION PROJECT
GMC # ACOL180003
1206 FLORA STREET
CONCRETE SLAB INFILL

CONCRETE SLAB INFILL PLAN
A1.01