

Advising is an important first-year success program for students as institutions have identified it as the most commonly used first-year program. However, it might be structured differently depending on institutional characteristics and resources.

Frequency

required students to meet with advisors

44.9%

Four-Year Institutions
once each term for
the entire first year

35.2%

Two-Year Institutions
only once during the first term



Advisor Load

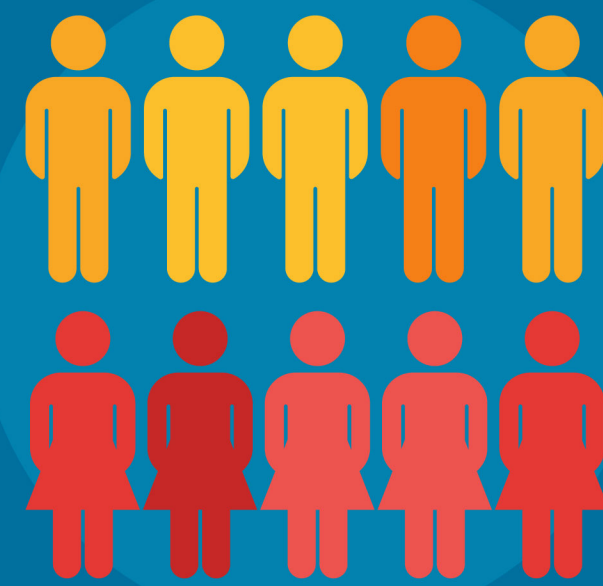
have a student-to-advisor ratio of

56.4%

Four-Year Institutions
100 students or **less** per advisor

53.4%

Two-Year Institutions
100 students or **more** per advisor



Administrative Home

housed first-year advising under

54.7%

Four-Year Institutions
academic affairs

57.5%

Two-Year Institutions
student affairs



Advisor Role

49.5%

Four-Year Institutions
Two-Year Institutions
use professional advisors

56.8%

43.2%

Four-Year Institutions
Two-Year Institutions
use faculty members as advisors

33.0%



FIRST-YEAR ADVISING

Academic advising spans every academic discipline at a higher education institution, but can be particularly valuable to students in transitions. Advisors have a bird's eye view of a student's educational journey, especially in the first year, and research suggests academic advising is critical to the educational experience, as advisors provide guidance and support to the students from enrollment to graduation.

A majority of participants reinforce the importance of advising by making it mandatory.

Have mandatory academic advising for first-year students.

85.7%

Four-Year Institutions

59.1%

Two-Year Institutions

Institutions report that student participation in first-year advising is important.

95.4%

Four-Year Institutions

81.6%

Two-Year Institutions

Reported that at least half of all first-year students participate in advising, whether mandatory or not.



NATIONAL RESOURCE CENTER

FIRST-YEAR EXPERIENCE® AND STUDENTS IN TRANSITION
UNIVERSITY OF SOUTH CAROLINA

In 2017, the National Resource Center administered the National Survey on The First-Year Experience (NSFYE) and 537 institutions across the U.S. responded. This survey focused on structures these institutions used to support student success during the transition to college.

Troxel, W. G. (2019). First-Year Advising. In D. G. Young (Ed.), 2017 National Survey on the First-Year Experience: Creating and coordinating structures to support student success (Research Report No. 9; pp. 33-43). Columbia: National Resource Center for The First-Year Experience and Students in Transition, University of South Carolina.

WWW.SC.EDU/FYE

@NRCFYESIT

@NRCFYESIT