



# **BUILDING A COMPREHENSIVE FIRST-YEAR PROGRAM**





February 20, 2012

**GREGORY EISELEIN, EMILY LEHNING,  
AND STEVEN J. HAWKS**





A question for everyone ...

**WHERE ARE YOU IN FYE PROCESS?**



Research shows ...

# FYE WORKS





In 2004, these lessons had not yet made their impact at

# **KANSAS STATE UNIVERSITY**





**K-STATE 1 FIRST**

A brief history of

# **K-STATE FIRST**





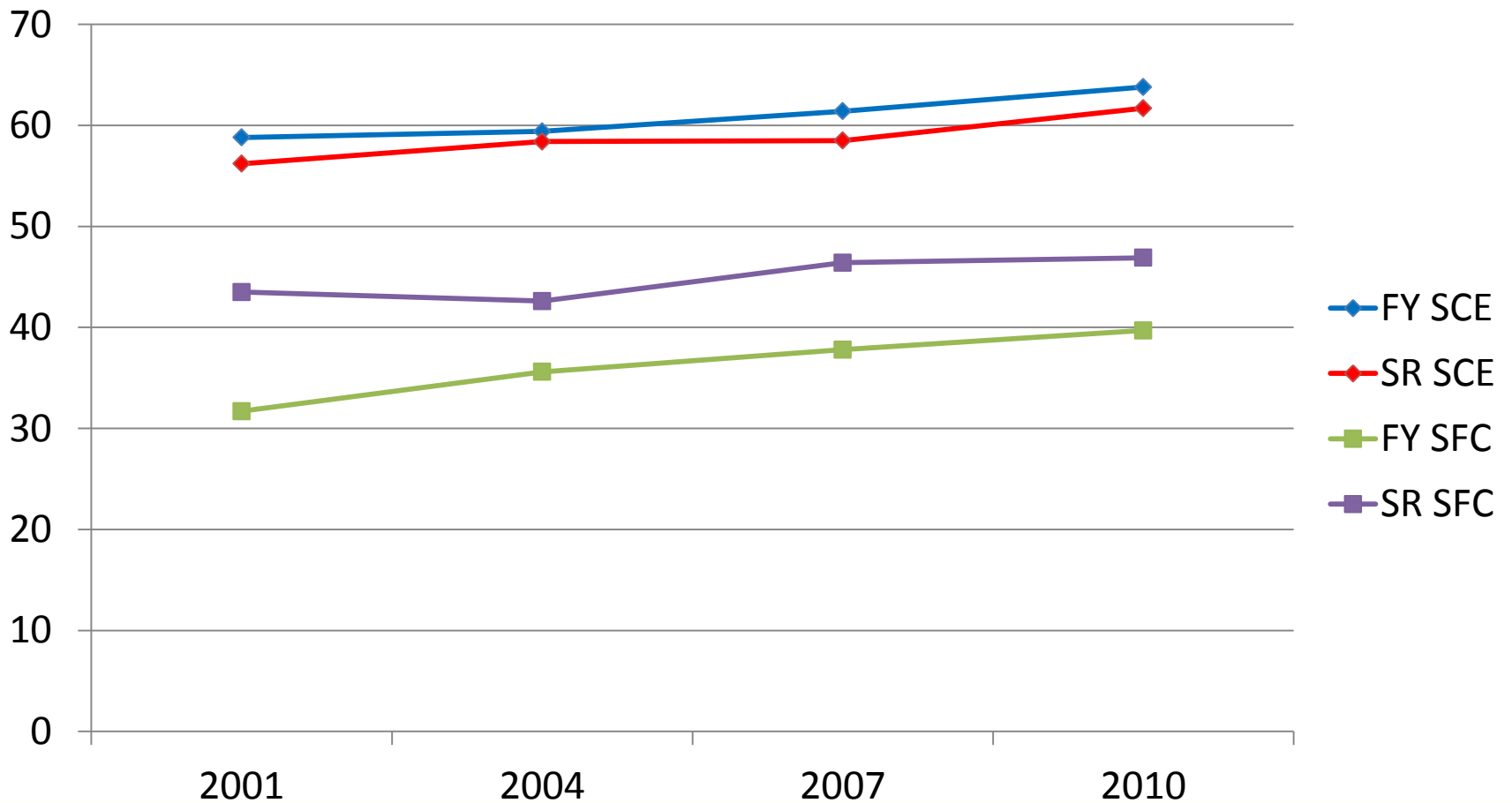
National Survey  
of Student Engagement

2001, 2004

# KANSAS STATE & THE NSSE

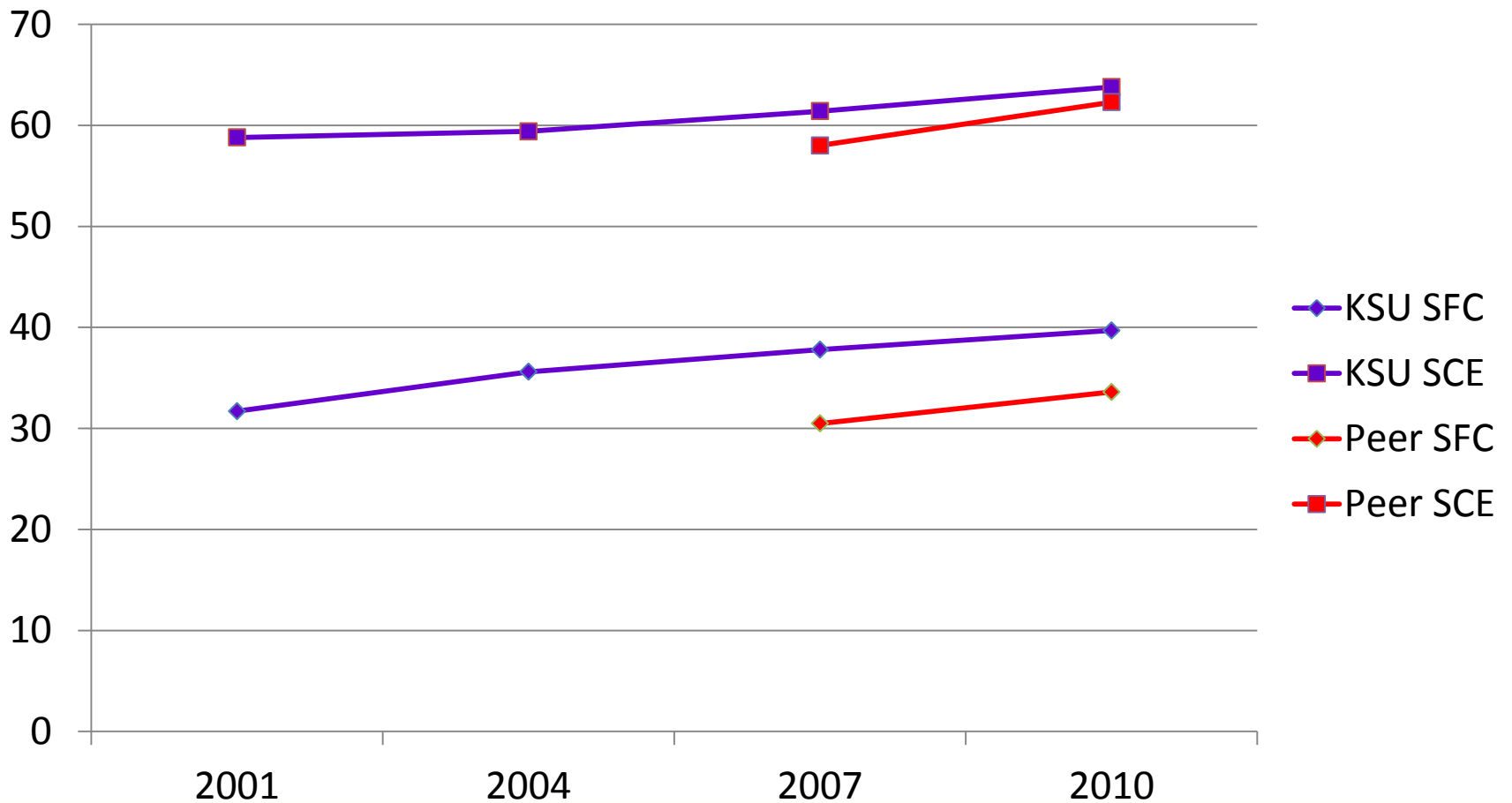


# NSSE BENCHMARKS

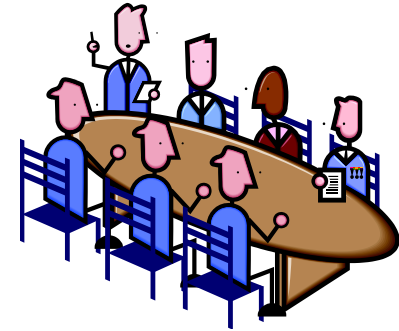




# FIRST-YEAR BENCHMARKS







2005-07

# THE TWO TASK FORCES



31st Annual Conference on The First-Year Experience\*

February 17-21, 2012  
San Antonio, Texas



Supporting, Advancing, Improving — Our Mission Remains

Register Before January 24, 2012 to Receive the Conference Registration Discount

2008-12

# THE ANNUAL CONFERENCE ON THE FIRST-YEAR EXPERIENCE





# 1st - Year Seminar

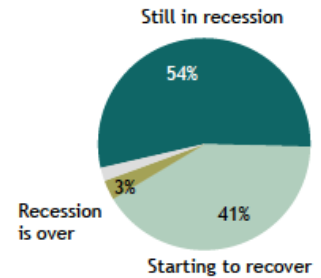
2008-09

## **FYS PILOT STUDY AT KANSAS STATE**





Most Say the Recession Continues



Note: "Don't know/Refused" responses are included but not labeled.

PewResearchCenter

2008 - ?

# THE GREAT RECESSION





2009

# UNIVERSITY ADMINISTRATION CHANGE





2009

# UNIVERSITY OF OREGON SITE VISIT

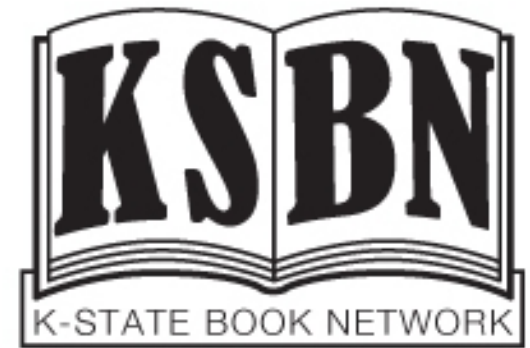




2009

# CREATION OF GPS - GUIDE TO PERSONAL SUCCESS





2010

# LAUNCH OF KSBN - THE K-STATE BOOK NETWORK





2010

# CREATION OF CAT COMMUNITIES





2010

# OFFICIAL LAUNCH OF K-STATE FIRST





**K-STATE FIRST**

2011-12

**K-STATE FIRST, NOW**



# 1st - Year Seminar



NOW

## FOUR PROGRAMS



# ADMINISTRATIVE STRUCTURE

- Report to Provost
- Advised & guided by campus workgroup
- 2 Directors, faculty & student life
- Assistant Coordinator & GTA
- Committees: Research & Assessment, KSBN, Communications, Student Advisory Council
- Faculty & Learning Assistants
- Connected widely



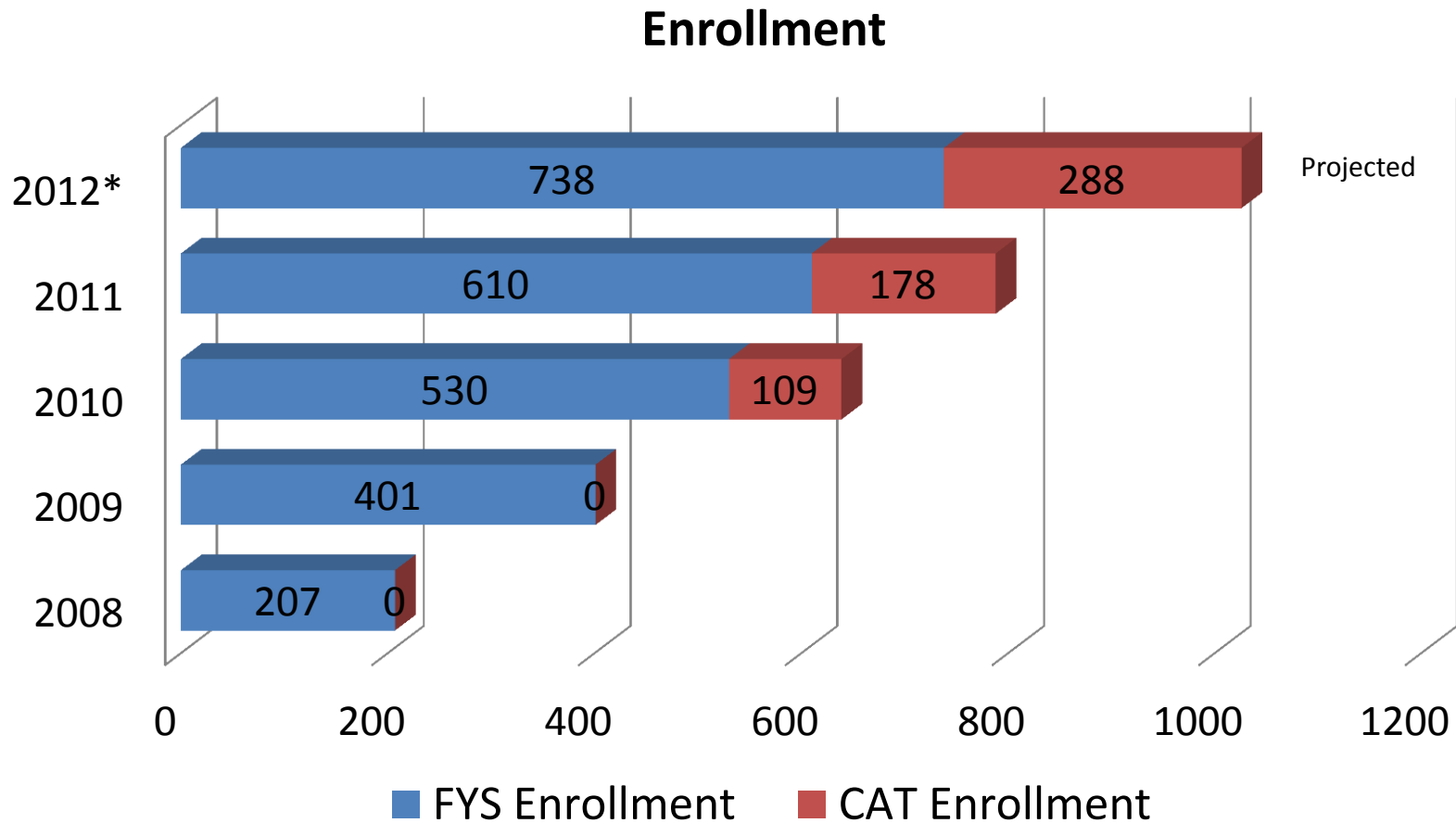
# K-STATE FIRST BY THE NUMBERS

Students served in the fall of 2011

- FYS [36 sections]: 610
- CAT Communities [11]: 178
- GPS: 350
- KSBN: 3,550+

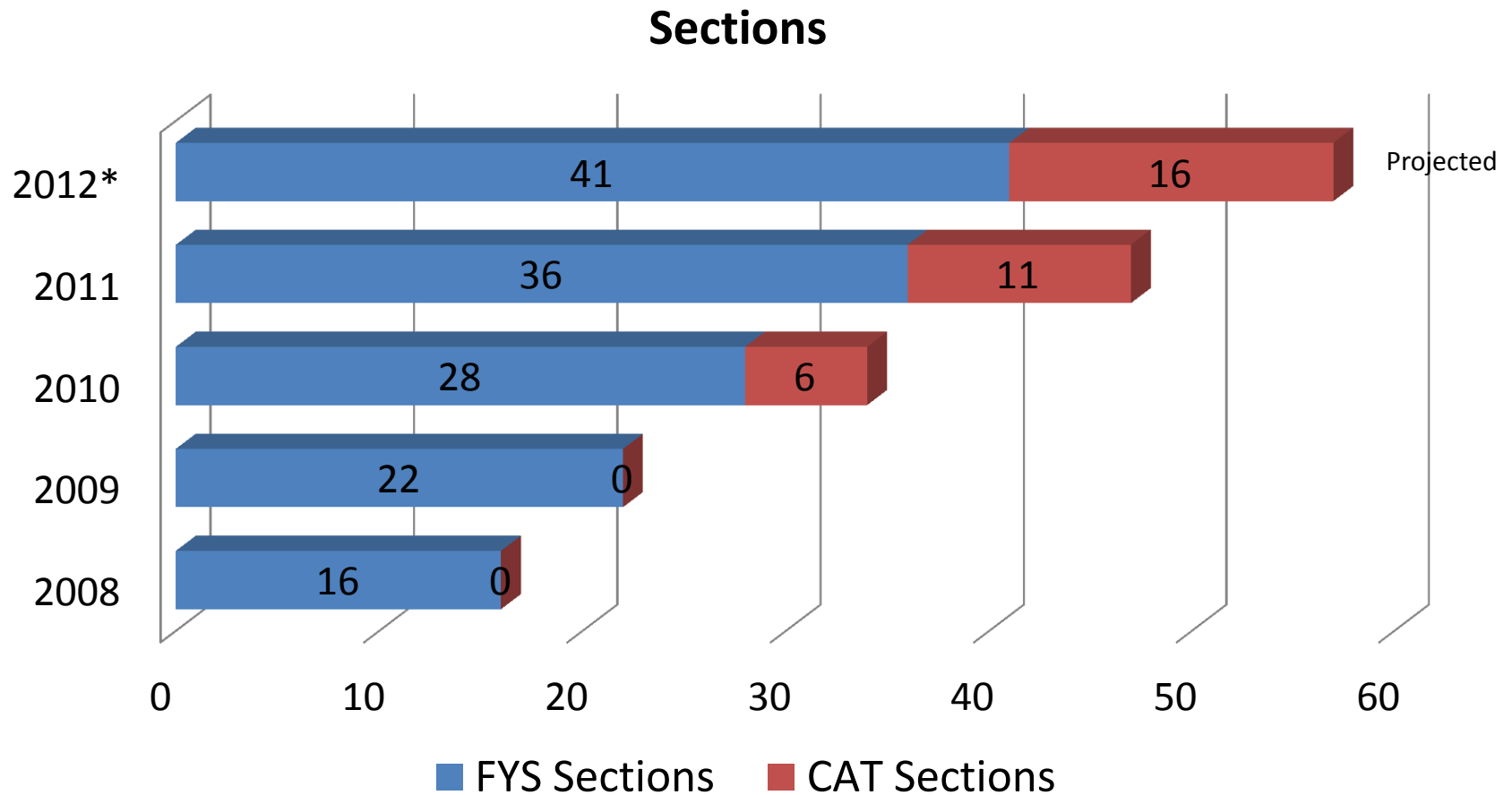


# K-STATE FIRST BY THE NUMBERS





# K-STATE FIRST BY THE NUMBERS





# SUCSESSES/CHALLENGES MET

- Engaged and included faculty
- Bridged academic affairs and students affairs
- Survived the global financial crisis
- Connected ourselves
- Improved retention
- Enjoyed high student satisfaction numbers
- Engaged students





**K-STATE 1 FIRST**

# **ASSESSMENT OF K-STATE FIRST**



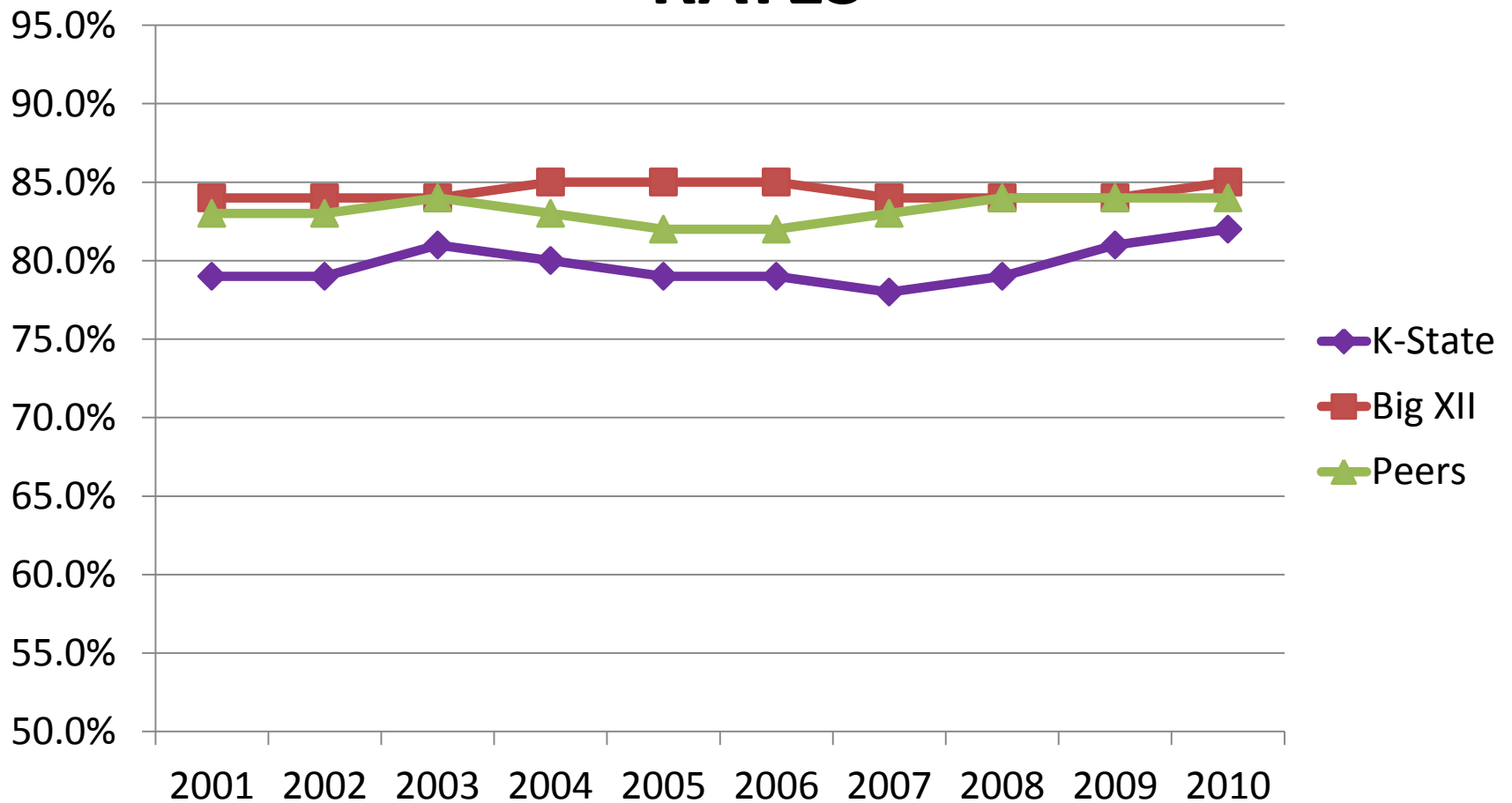


Quantitative Measures

# **STUDENT SUCCESS & PROGRAM BUILDING**

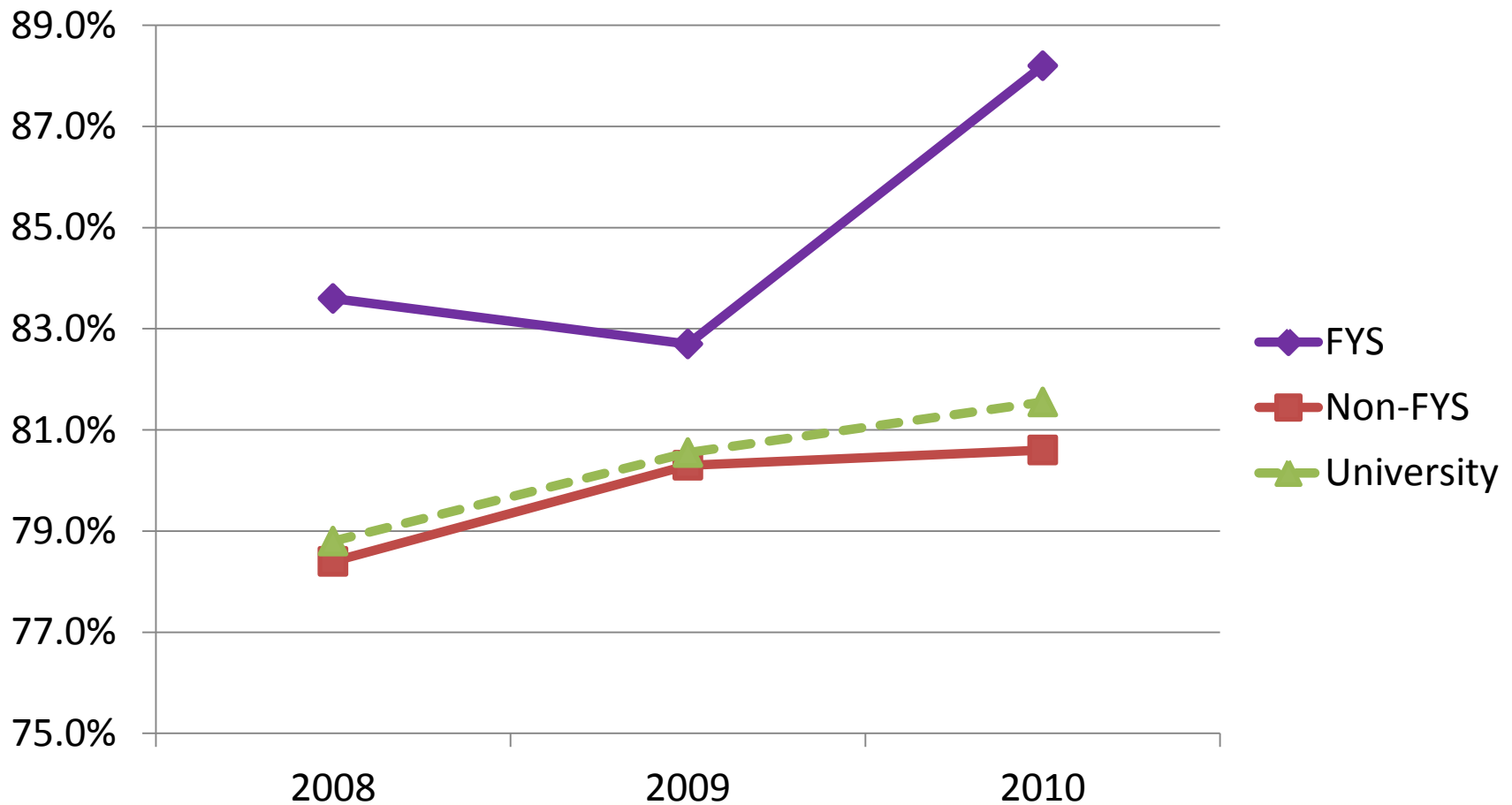


# LONGITUDINAL: FIRST-YEAR RETENTION RATES





# K-STATE FIRST: FIRST YEAR RETENTION RATES







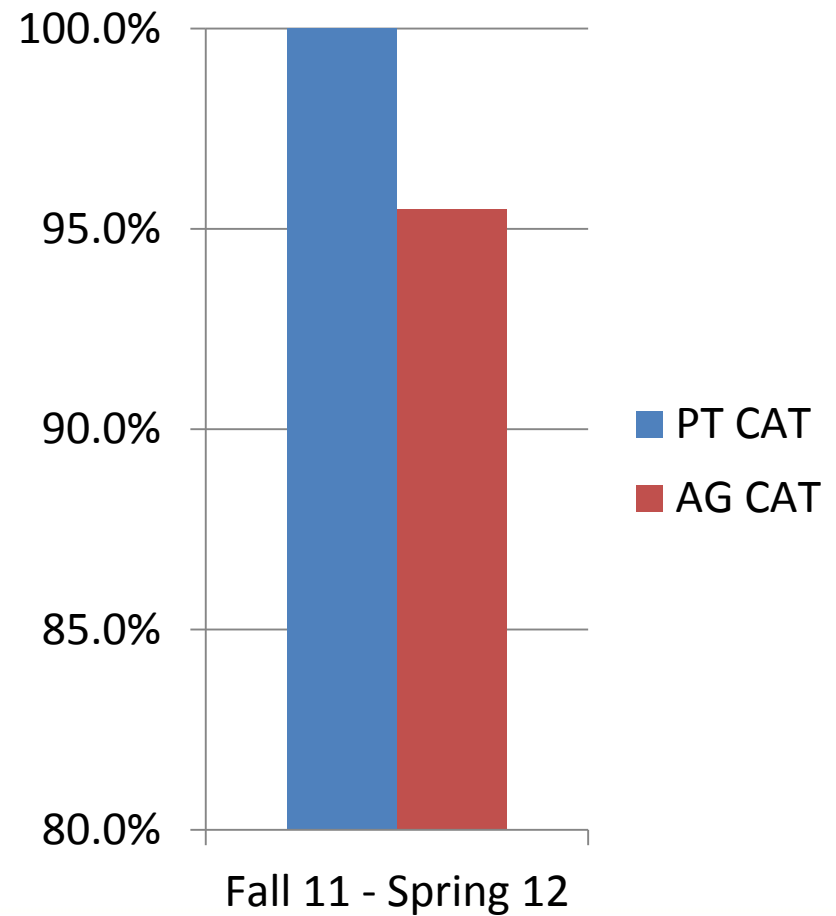
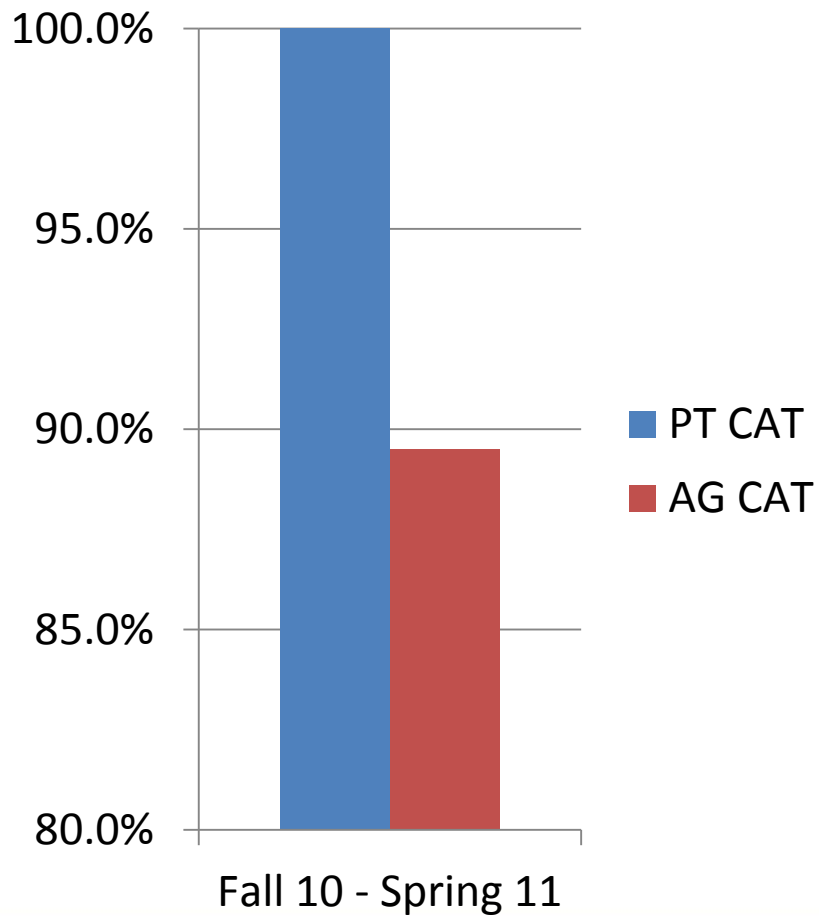
CAT Communities

Retention and GPA

# CAT COMMUNITY EXAMPLES



# FALL TO SPRING PERSISTENCE

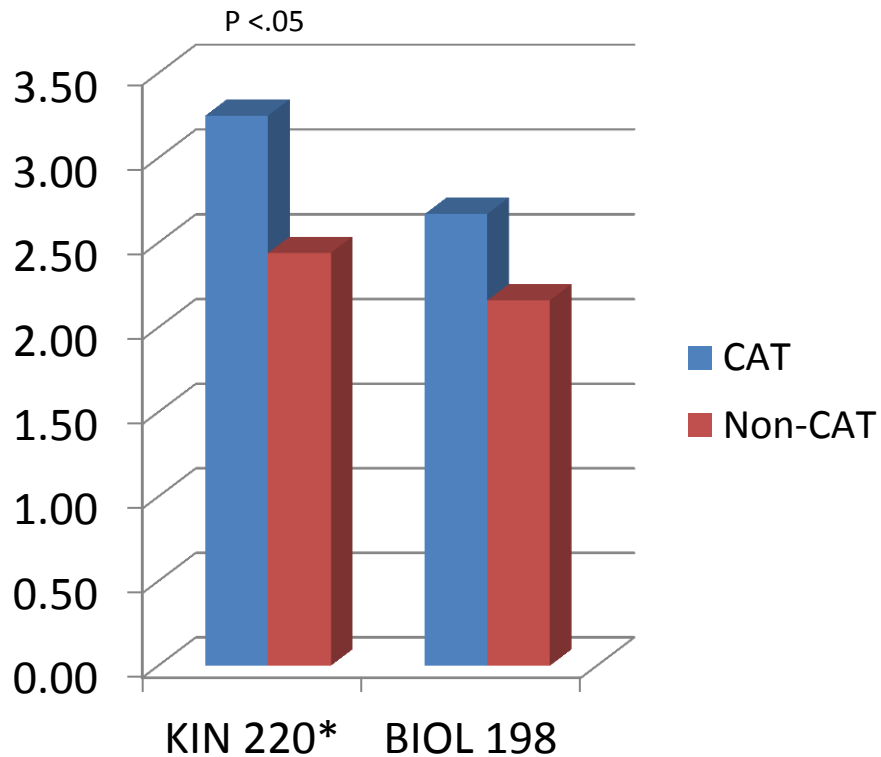




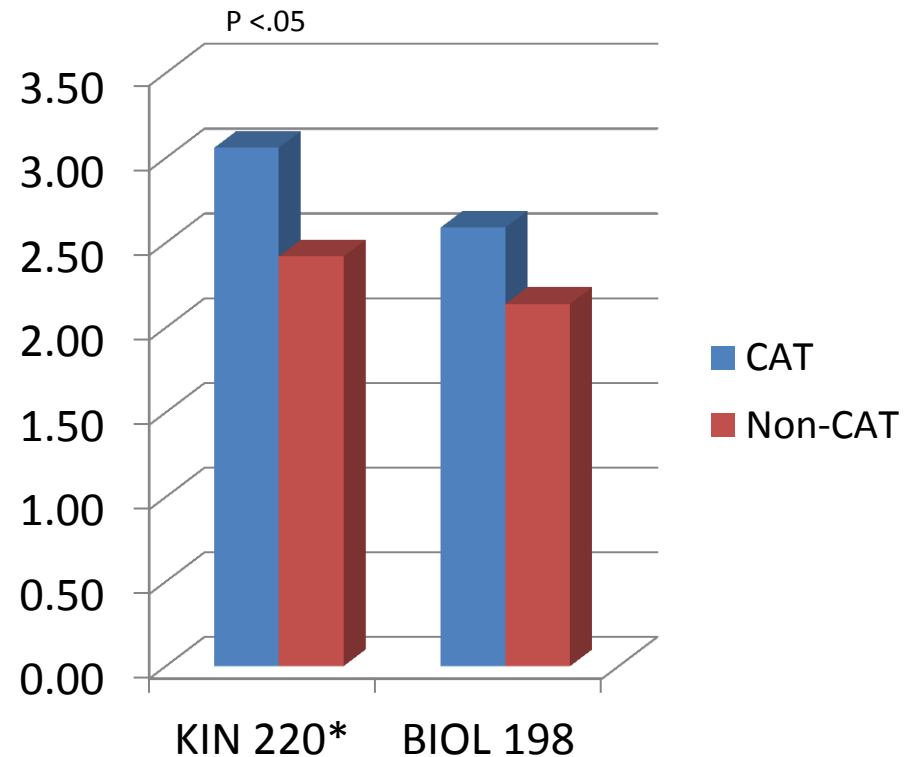
# PRE-PHYSICAL THERAPY CAT COMMUNITY

## Course GPA

Fall 2010



Fall 2011



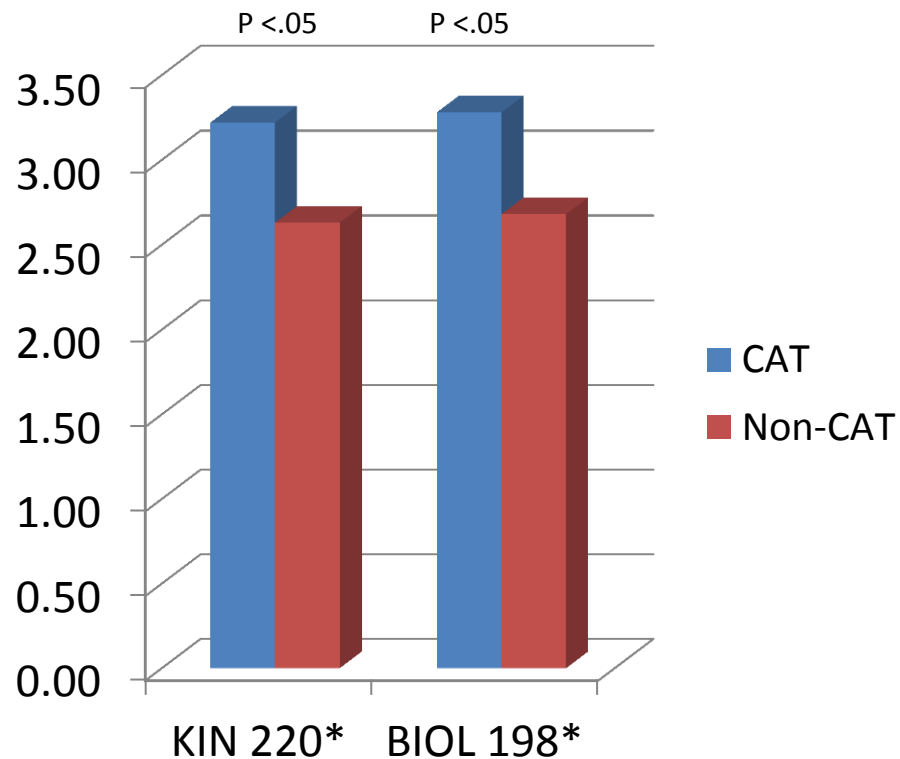




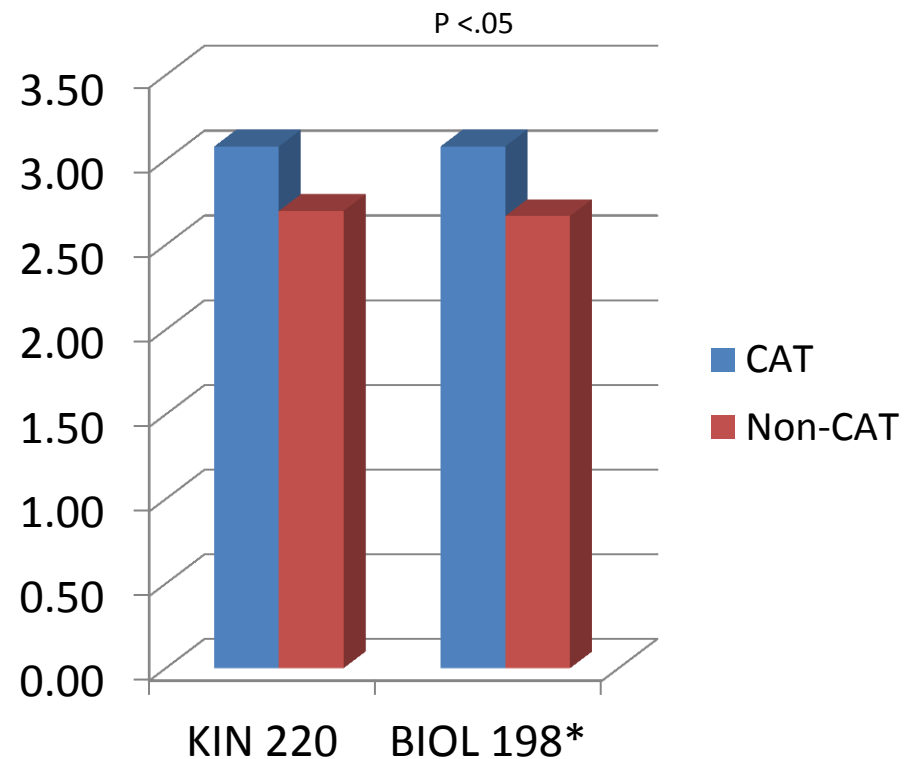
# PRE-PHYSICAL THERAPY CAT COMMUNITY

## Term GPA

Fall 2010



Fall 2011

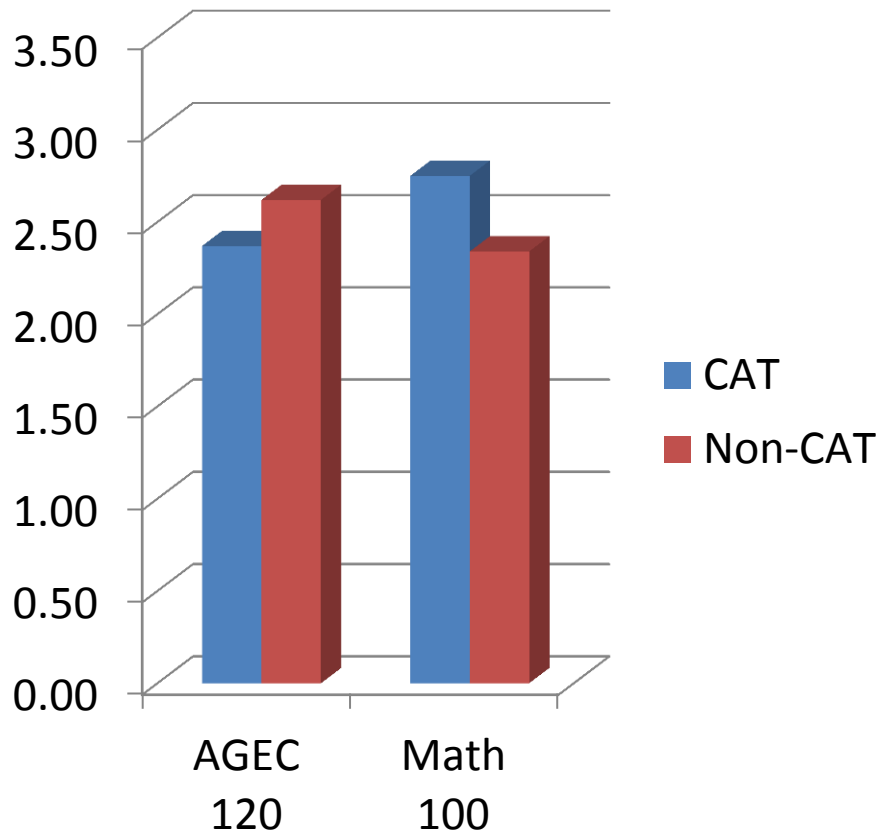




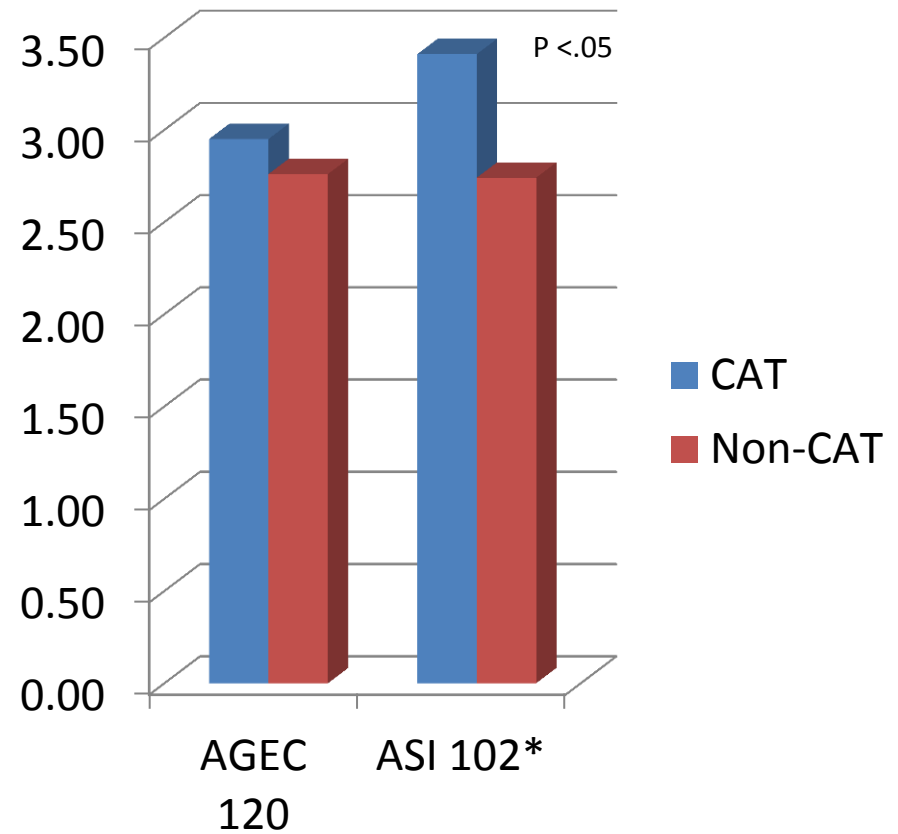
# AGRICULTURE CAT COMMUNITY

## Course GPA

Fall 2010



Fall 2011

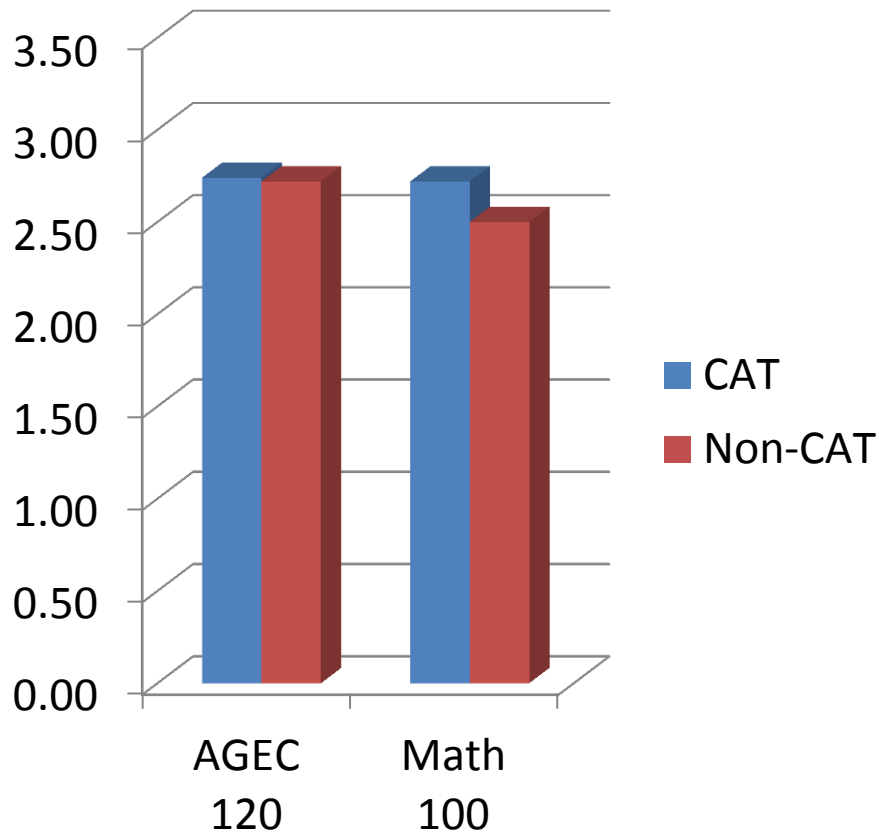




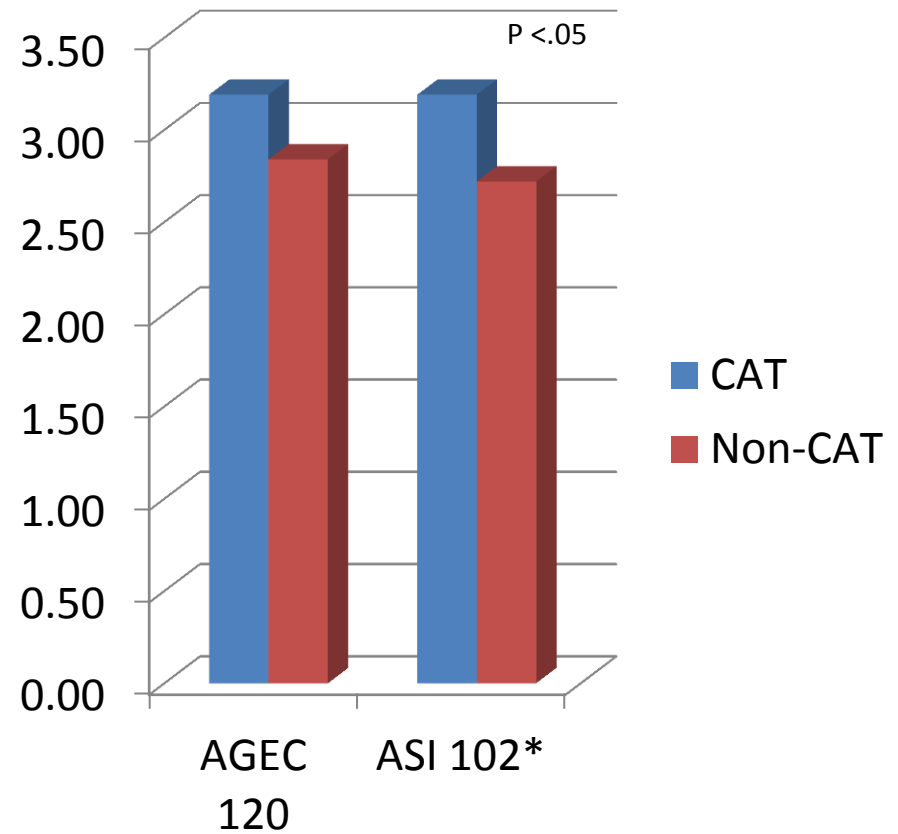
# AGRICULTURE CAT COMMUNITY

Term GPA

Fall 2010



Fall 2011







Qualitative Measures

# **STUDENT SUCCESS & PROGRAM BUILDING**



# STUDENT SATISFACTION

- Individual Development and Educational Assessment (IDEA Survey)
  - Excellent Course ratings
    - 73% (2008), 77% (2009), and 75% (2010)
  - Excellent Teacher ratings
    - 73% (2008), 82% (2009), and 82% (2010)



# IDEA SURVEY

- Objective analysis of student comments
  - Small class size
  - Thought-provoking discussion
  - Explore new/different views
  - Personable, flexible, and accessible instructors
  - Challenging learning environment
  - Think outside the box





# IDEA SURVEY COMMENTS

"This class was incredible. [The instructor] was one of the best teachers I've ever had. I think the first year seminar program is an amazing idea. This is a program that should become the norm. The atmosphere and style of the class were very conducive to learning."



# IDEA SURVEY COMMENTS

"Amazing teacher! He encouraged all of his students and was by far the most engaging and interesting of all my teachers this semester!"

"Best class I have ever taken!"



# FOCUS GROUPS

- 12 students from the Fall 08 FYS cohort participated in Spring 2011.
- Scheduled group interviews to add context to quantitative analysis.
- Retrospective accounts of FYS experience





# FOCUS GROUP FINDINGS

- Comfort
- Engagement
- Intimacy
- Adaptable
- Study Habits
- Personal attention
- Accountability

100% would recommend a First-Year Seminar



# ASSESSMENT: NEXT STEPS

- Program assessment to assessment of student learning
  - Revision of Common Student Learning Outcomes
  - Course-embedded assessments
    - Exam questions
    - Writing assignments
    - Individual/group projects
  - Analysis of NSSE results of KSF and non-KSF students





Summary

# **STUDENT SUCCESS & PROGRAM BUILDING**



# FUTURE PLANS





# SHORT TERM

- Redesign of faculty professional development series
- Approval of revised student learning outcomes
- Refresh marketing and public relations efforts

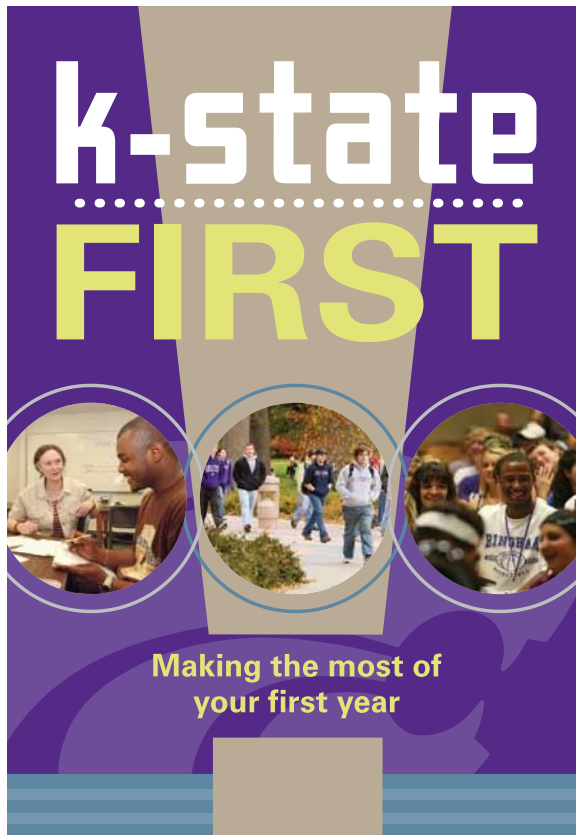


# NEW BRANDING





# NEW BROCHURE





# CONTINUAL

- Evaluate program structure and staffing
- Initiate fundraising efforts
- Expand offerings





For building a comprehensive first-year program, here are some ...

# LESSONS LEARNED





LESSON 1

# STRATEGIC INCLUSIVITY MATTERS





LESSON 2

# USE EXPERTS, INTERNAL & EXTERNAL





LESSON 3

# **ASSESS & USE YOUR OWN DATA**





LESSON 4

# TALK ABOUT YOUR SUCCESS





**THANK YOU**



# QUESTIONS? DISCUSSION.

[www.k-state.edu/first](http://www.k-state.edu/first)