

# **The First Year Experience**

Darrell C. Ray, Ph.D.

Assistant Vice Chancellor Student Life

Maggi L. Spurlock, Program Coordinator

First Year Experience

The logo for Louisiana State University, featuring the letters 'LSU' in a bold, dark blue, sans-serif font. The letters are closely spaced and have a slight shadow effect.

LOUISIANA STATE UNIVERSITY

# History

- LSU previously had no dedicated administrative structure for First Year Experience.
- In February 2008, the Division of Student Life was restructured.
- Under the leadership of the Provost it was decided to create the First Year Experience

# Structure

- Like services were aligned:
  - Orientation
  - Parent & Family Programs
  - LSU Family Association
  - First Year Experience

# Operational Budget

- The University System allocated an operating budget.
- The University reassigned the operating budget and salary lines of a department being phased out.

# Leadership

- The Provost had the vision to seat FYE in the Division of Student Life to communicate the message of the importance of the division in the overall development of students.

# Pre-Planning

- Prior to the establishment of the department and the complete division reorganization a work group of division leadership outlined the plan for the future of the first year experience.

# Pre-Planning

- The work group reviewed peers, best practices, and engaged in honest dialog about what could work at LSU.

# FYE – Mission

To foster collaboration across campus to maximize student success both inside and outside the classroom to foster a seamless, holistic learning environment.



# FYE – Objectives

- Collaborate with campus departments
- Coordinate assessment of the campus culture, services, and policies
- Customize programmatic initiatives
- Facilitate the transition into LSU for students and their parents
- Provide education, training, and outreach

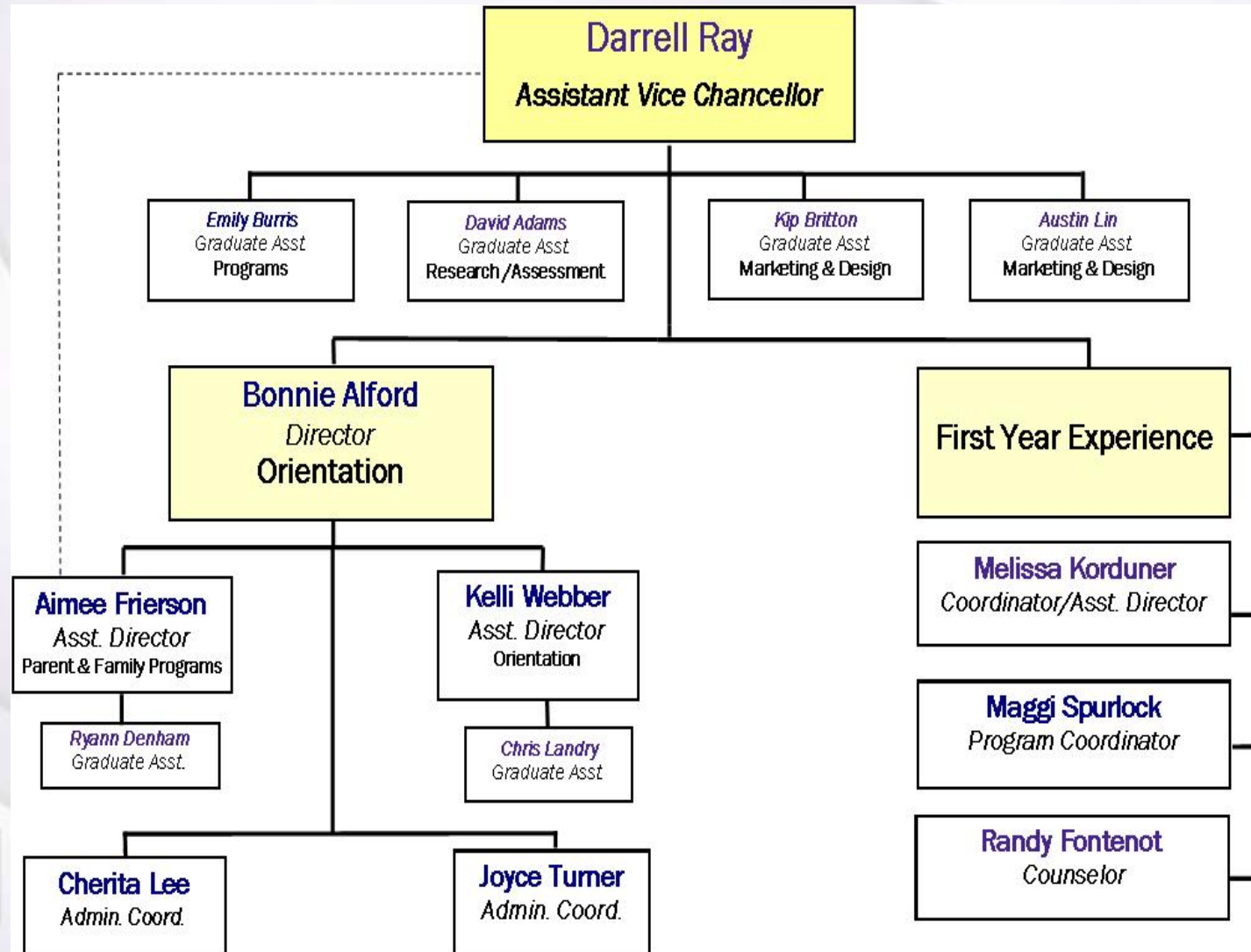
# Intentions

- Collaborate
- Communicate
- Create
- Evaluate

# Action Plan

- Audit Activities & Programs
- Benchmark Peers
- Identify Needs
- Develop Plan
- Develop Learning Outcomes
- Design Interventions

# Organizational Structure



# Philosophical Structure



# Examples of Programmatic Initiatives

- Tiger Transition Team
- Ask FYE email address
- Faculty Training sessions on Student Development
- Career Exploration Sessions
- Tiger Parents Brochure
- First Year Speaker Series
- Bengal Book Groups
- Personal Success Planning

# Examples of Programmatic Initiatives

- 60 Things to do @LSU  
your 1<sup>st</sup> year poster
- Brochure of all  
academic support  
services
- Tiger Transplant  
Lunches (for out of  
state students)
- S.T.R.I.P.E.S. –  
transition camps  
([www.lsu.edu/stripes](http://www.lsu.edu/stripes))
- Advice 2 Geaux –  
academic advisors  
after hours in dining  
halls

# Contact

- For more detailed information on the programs and services feel free to contact us.
- Our website is being developed, but the basic information can be accessed at [www.lsu.edu/fye](http://www.lsu.edu/fye)
- Darrell Ray  
[dcray5@lsu.edu](mailto:dcray5@lsu.edu)
- Maggi Spurlock  
[mspurl1@lsu.edu](mailto:mspurl1@lsu.edu)