

# From Kiddie Pools to Tidal Waves:

Hi & Low Tech Aids for Daily Living &  
Modifications for the Home

---

Catherine Leigh Graham, MEBME  
Rehabilitation Engineer  
USC – School of Medicine  
Interagency Office of Disability and Health  
(803) 434-3189  
[Catherine.graham@palmettohealth.org](mailto:Catherine.graham@palmettohealth.org)

# HOME MODIFICATIONS

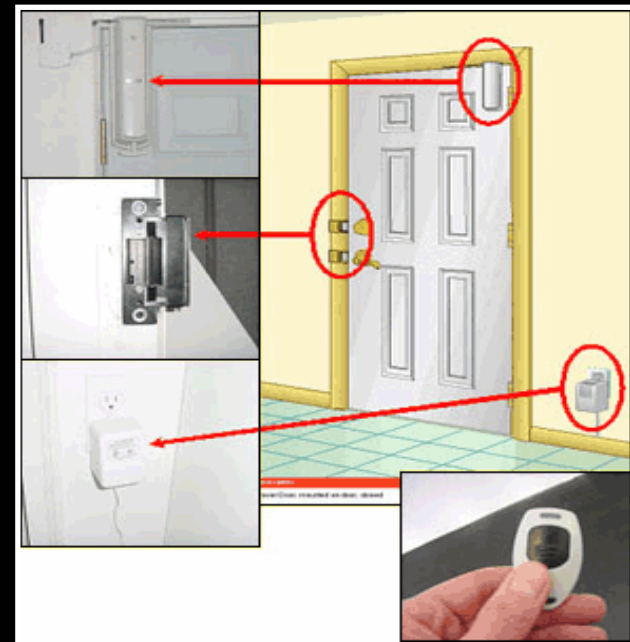
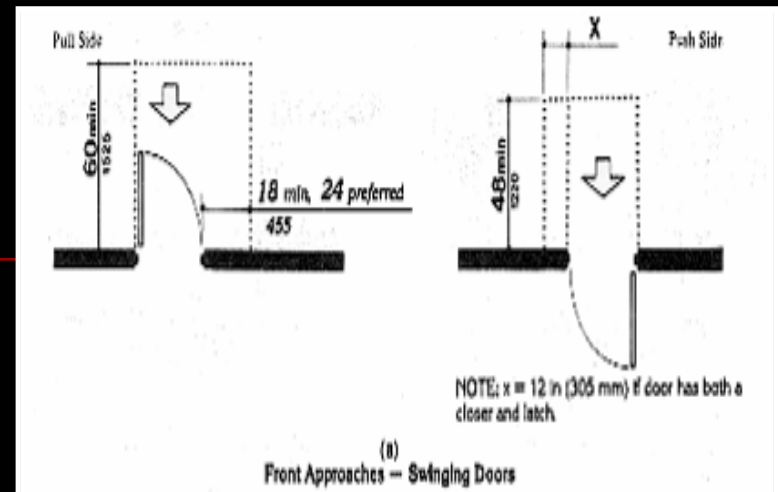
---

- Entrance/Exit
- Circulation
- Bathroom
- Bedroom
- Kitchen



# Entrance/Exit

- Two routes for emergencies
- Flush sill
- Door
  - Widen
  - Pull Clearance
  - Lever Handle
  - Force
  - Power opener/lock



# Entrance/Exit (cont.)

## ■ Ramp

- Grade/Slope
- Material
- Non Slip
- Switch Backs
- Hand Rails

## ■ Lift/Elevator

- Weather
- Power



# Circulation

---

## ■ Doors

- Widen opening
- Lever handles
- Locking mechanism
- Pocket door
- 2 smaller doors

## ■ Hall

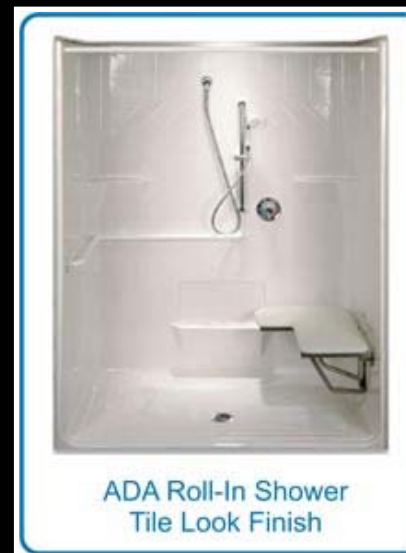
- Edge protector

## ■ Rooms

- Difficult: Carpet and Rugs
- Turning space: Rearrange furniture

# Bathroom

- Roll in shower
  - 3'x3'
  - In place of tub
- Hand Held Sprayer
  - multiple locations
  - on or off default
- Collapsible water retainer
- Grab Bars



ADA Roll-In Shower  
Tile Look Finish



ADA  
Transfer Shower

# Bathroom

- Pedestal Sink
- Knee Clearance
- Pipe protector
- Lever handle faucet
- Low/Tilting mirror
- Turning radius
- Grab Bar around toilet



# Bedroom

- Doors
  - Clearance
  - Swing Away Hinges
  - Pocket
- Floor space, layout
- Toe clearance
- Drawers
- Closet doors
- Bed height
- Overhead lift
- Remote controlled blinds, shutters or drapes



# Kitchen

- Stove – roll under, front controls
- Refrigerator side by side or top over bottom
- Oven/Microwave - raised
- Cabinet Space - lowered
- Sink/Faucet
  - Roll Under/Height Adjustable
  - Clearance
  - Lever Handles
- Pull out shelves



ADL's:

---

Lo and Hi Tech  
Assistive  
Technology

# Dressing

---

- Buttons - hooks
- Zippers - pulls
- Shoes - laces, Velcro
- Pants/skirts
- Pullover shirts/buttons



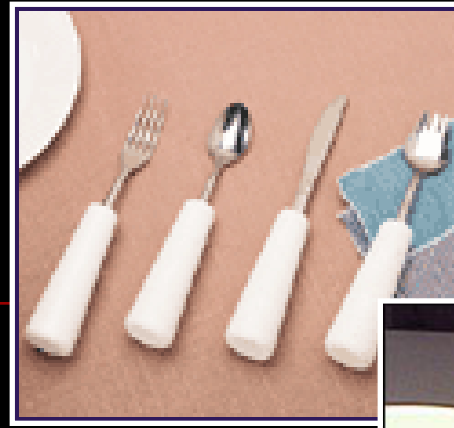
# Bathing

- Wash Brush Extension
- Lever Mixer Valve
- Anti Scald Valve
- Non Slip Mat
- Tub Bench
- Toothbrush Holder
- Hairdryer Holder



# Eating

- Modified Utensils
- Modified Cup
- Long Straw w/o back flow
- Cutting Board Holder
- Dycem



# Doors

---

- Door Locks
- Key Turners
- Lever Handles
- Pocket Doors



# Other

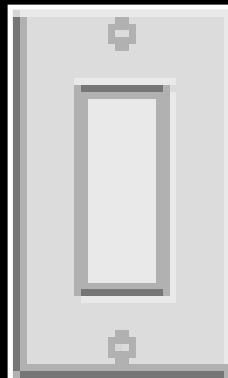
## ■ Phone

- Holder
- One Touch
- Voice Activated

## ■ Reachers

## ■ Lamps/Lights

- Rocker Switch
- Lower
- Touch
- “Clapper”



# What do you want to control?

---

- Lamps/overhead lights (socket, wall switch)
- Fan (socket, wall switch)
- TV/VCR/CD/DVD
- Radio (on/off)
- Tape recorder
- Attendant call
- Motorized bed
- Power door opener
- Telephone: answer, hang-up, dial, special functions
- Appliances (coffee maker)
- Thermostat
- Power drapes
- Page turner
- Intercom

# Appliance/Electronic

- TV/VCR/DVD
  - Smaller/Larger Remote
- X10 Units
  - Appliance
  - Heavy Duty (3 prong)
  - Lights with Dimmer
  - Portable
  - 16x16 devices
  - Scanning capability



# Remote and X10

## ■ Mini Relax

- On/off
- Channel up/down
- Volume up/down
- Mute

## ■ Relax II

- 4 Infrared (remote)
- 10 X10 units

## ■ Relax III – Relax II with phone



# Voice Activation

---

- Sicare and Sicare Light
- Static vs. Learning
- Wake Up/Sleep Commands
- Nested Commands



# Modular/Integrated Systems

---

## ■ Modular Systems

- provide a single function
  - Pro: may save \$ by allowing only the needed functions to be purchased
  - Con: need for multiple input devices & methods, lack of compatibility with other devices

## ■ Integrated Systems

- provide multiple functions such as X-10, phone, and IR

# Hi Tech ECU Assessment

---

- What does the user want the ECU to do?
- What are the user's functional capabilities?
- What is the user's prognosis?
- What type of feedback does the user need?
- Where will the ECU be used?
- Will the ECU be used in one/several rooms?
- Does the user need portability?
- Does the ECU need to be integrated with other equipment?
- How will the user be positioned relative to the device?
- What is the user's (caregiver's) cognitive status?
- Who can repair the equipment?
- How difficult is the ECU to install?
- Training

# RESOURCES

---

- Listing of ECUs & the manufacturers
  - [www.chedoke.ca](http://www.chedoke.ca)
- Catalogs for the X-10 modules
  - [www.smarthome.com](http://www.smarthome.com)
  - [www.homecontrols.com](http://www.homecontrols.com)
  - [www.x10.com](http://www.x10.com)
  - radio shack
- Phones
  - [www.ameriphone.com](http://www.ameriphone.com)
  - [www.hellodirect.com](http://www.hellodirect.com)