

A photograph of a sunset over the ocean. The sun is low on the horizon, creating a bright orange glow. A sailboat is visible on the horizon line. The sky is filled with clouds, and the water reflects the sunset colors. The overall mood is serene and contemplative.

Voyages into the Technology Frontier

- Briefings from Faculty and Staff Who are on the Journey -

Agenda

- ❑ **Opening Remarks** - Dr. Christine W. Curtis, Senior Vice Provost
- ❑ **Introductions** – Dr. William F. Hogue, VP & Chief Information Officer
- ❑ **Horizon 2010, Emerging Technologies** - Chris Byrd
- ❑ **Report from the Educause Learning Institute** – Linda Mihalik
- ❑ **Accessing Special Collections** - Kate Boyd
- ❑ **Skype; Adobe Connect** - Kim Connolly
- ❑ **Blackboard** - Chris Brown
- ❑ **Technology in the Graphic Design Creative Process** - Marius Valdes
- ❑ **Second Life** - Sam Hastings and Dr. Feili Tu
- ❑ **Facebook, Skype** - Jodi Salter
- ❑ **Virtual Classrooms and Audio/Visual Assessment** - Tena Crews
- ❑ **Apple Technologies on Campus** - Michele Dames

2010 Horizon Report



**What are the most significant
technology trends and challenges
that will impact
teaching and learning over the
next five years?**

February 24, 2010

2010 Horizon Report



Key Trends

The abundance of easily accessible resources impacting the role of educators

Students' expectation to work, learn, study whenever and wherever they want

Increasingly cloud-based technologies and changing nature of IT support

Increasingly collaborative nature of the work of students is driving more cross-campus collaboration between departments

February 24, 2010

2010 Horizon Report



Critical Challenges

The role of the academy - and the way we prepare them for the future - is changing

New scholarly forms of authoring, publishing, and researching continue to emerge

Digital media literacy continues to rise in importance

Budget constraints force institutions to focus more narrowly on key goals

February 24, 2010

2010 Horizon Report



Emerging Technologies

One year or less

Mobile Computing

Open Content

Two to three years

Electronic Books

Simple Augmented
Reality

Three to five years

Gesture-based Computing

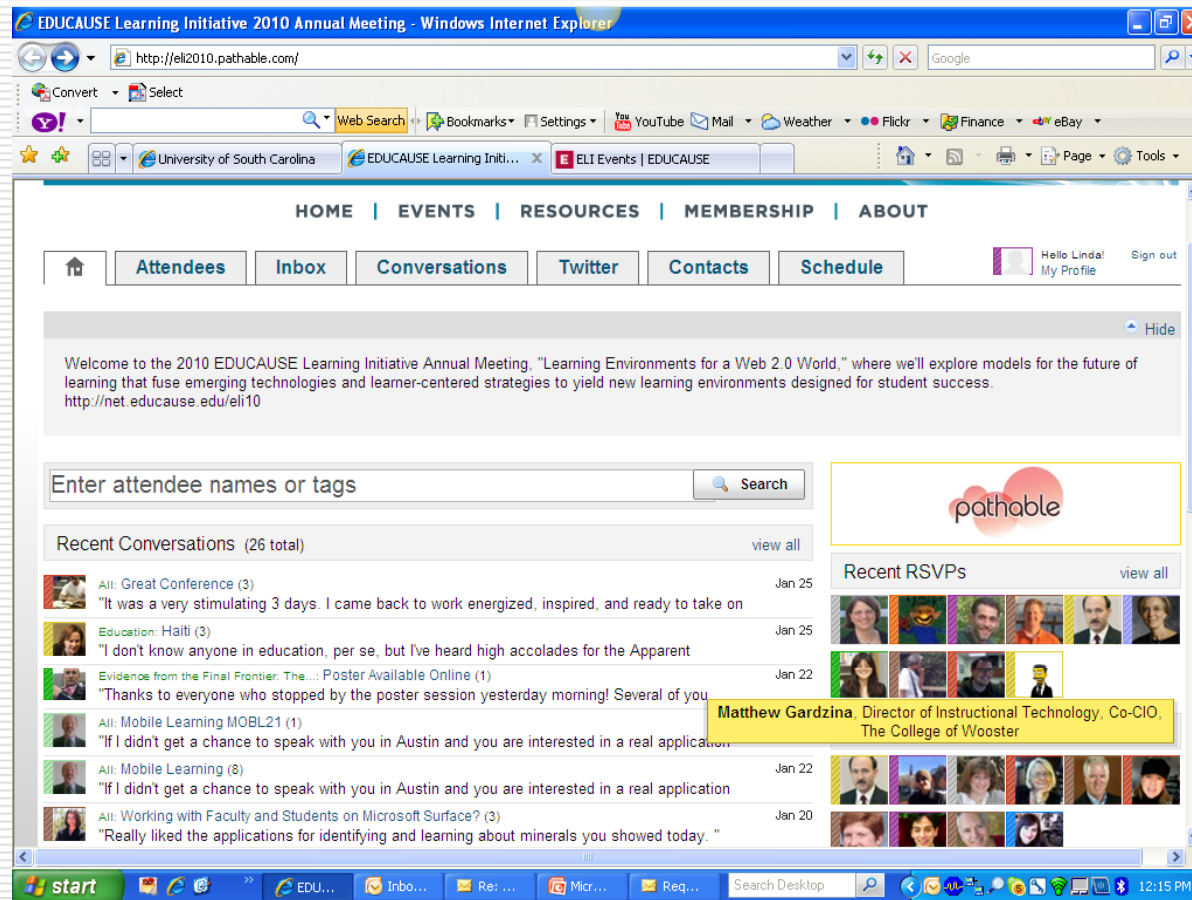
Visual Data Analysis

February 24, 2010

EDUCAUSE Learning Initiative (ELI)

- Community of higher education institutions and organizations.
 - Committed to advancing learning through IT initiatives.
 - 2010 Annual Meeting
 - "Learning Environments for a Web 2.0 World,"
 - Social Networking Hub
 - Pathable –
 - Participant profiles
 - Collaboration
 - Google Wave
-

Social Networking Hub - Pathable



Google Wave – Share files

The screenshot displays the Google Wave interface. On the left, there is a navigation sidebar with options like 'Inbox', 'All', 'By Me', 'Requests', 'Spam', 'Settings', and 'Trash'. Below this is a 'Contacts' section showing 'Linda', 'Chris', and 'Walter'. The main area is divided into two panes. The top pane, titled 'Inbox 1 - 7 of 7', shows a list of messages, including one from 'ELI 2010 Annual Meeting Wave' with 41 of 83 messages. The bottom pane, titled 'ELI 2010 Annual Meeting Wave', shows a conversation with a yellow header 'EDUCAUSE Learning Initiative gave everyone access.' and a file named 'file' with a red arrow pointing to it. The file is described as 'Love this image Shawn! I've come to the conclusion that waves are best done with small groups, like less than 10. Otherwise, it turns into a giant IM!'. Below the file are several comments from other users, such as Samuel Boland, Gardner Campbell, Kate Ellis, and Allison C. The interface includes various controls like 'Follow', 'Unfollow', 'Archive', 'Spam', and 'Read' buttons.

Google Wave – Immediate Surveys

The screenshot displays the Google Wave interface within a Windows Internet Explorer browser window. The browser's address bar shows the URL: https://wave.google.com/wave/#restored:wave:googlewave.com!w%25283G-X_pnTA. The page title is "Linda (2) - Google Wave".

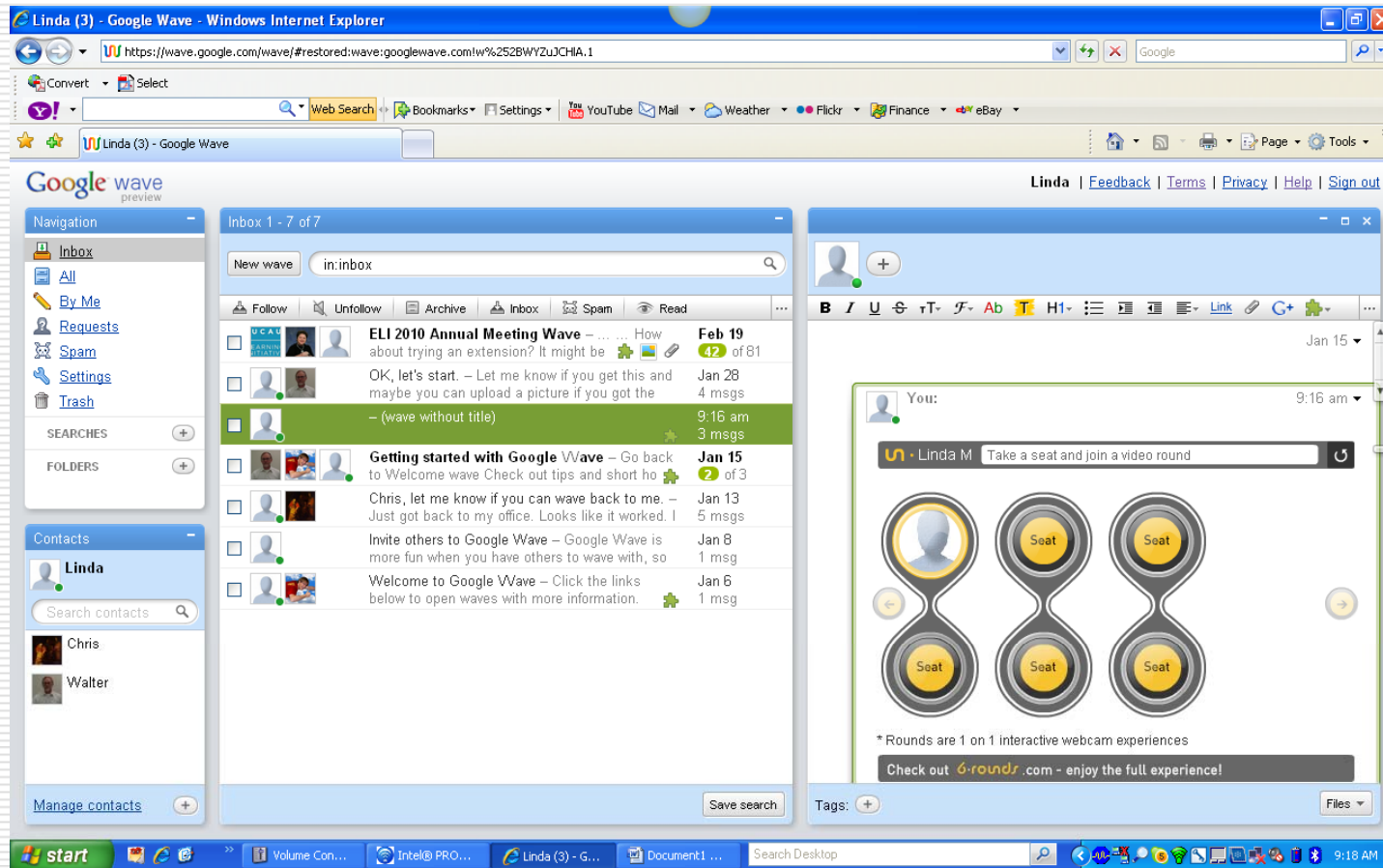
The interface is divided into several sections:

- Navigation:** Includes links for "Inbox", "All", "By Me", "Requests", "Spam", "Settings", and "Trash".
- Contacts:** Lists "Linda", "Chris", and "Walter".
- Inbox (1 - 7 of 7):** Shows a list of messages. The selected message is from "ELI 2010 Annual Meeting Wave" with the subject "How about trying an extension? It might be" and 41 of 83 messages.
- Wave Window (ELI 2010 Annual Meeting Wave):** Displays a poll titled "A quick poll" with the following options and response counts:

Option	Count
First time seeing Wave	(19)
Have used it a bit	(44)
Was at the Google I/O to see it first	(0)
Have used it extensively	(5)
Linda	(1)

The Windows taskbar at the bottom shows the Start button, system tray icons, and the time 9:36 AM.

Google Wave – Video Conferencing



Educause Learning Initiative

- Virtual Reality
 - Second Life
 - Active World
 - Backchannel
 - Twitter
 - Text
 - Hyper-linked Campus - Connected to the World
 - Twitter
 - Blogs
 - Facebook
-

Educause Learning Initiative

- Assessment
 - Blackboard statistics
 - Born Digital – Digital Storytelling
 - Online profiles and avatars
 - Safety, security and privacy
 - Social, professional Psychological impact
 - E-Textbooks
 - Kindle
 - Session Videos at <http://ow.ly/V5yv>
-

E-Textbooks

- Proposed joint experiment – Office of the Provost, Honors College and UTS.
- Negative results using the Kindle.
- Download to computer
 - Vital Source
- Lack of e-textbooks for courses
- On-line workbook
 - Positive response to immediate feedback
 - Difficulty with free form software

<http://www.saplinglearning.com/college/college-organic-chemistry>

IBIS Student View - Windows Internet Explorer

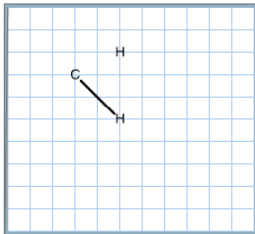
http://www.saplinglearning.com/ibis/cds/callStudentIbis.php?itemID=2990

IBIS Student View

Question 1

Sapling Learning

Formaldehyde, CH_2O , is used as an embalming agent. Draw the Lewis structure of CH_2O . Include lone pairs.



Drawing tips:

1. Click once on the grid, then just start drawing (click, hold, and drag).
2. Double-click on a letter then type to change the atom label.
3. Click on a bond to cycle through single, double, and triple.
4. Use the lone-pair button to add lone pairs.

Note: after using the lone pair button, you will need to click on the bond button if you want to edit the bonds or atoms again.

Tools

H

You can also change an existing atom by double clicking on it and typing the new symbol.

H	He
Li Be	B C N O F Ne
Na Mg	Al Si P S Cl Ar
K Ca Sc Ti V Cr Mn Fe Co Ni Cu Zn Ga Ge As Se Br Kr	
Rb Sr Y Zr Nb Mo Tc Ru Rh Pd Ag Cd In Sn Sb Te I Xe	
Cs Ba La Hf Ta W Re Os Ir Pt Au Hg Tl Pb Bi Po At Rn	
Fr Ra Ac Rf Db Sg Bh Hs Mt Ds Rg	
Ce Pr Nd Pm Sm Eu Gd Tb Dy Ho Er Tm Yb Lu	
Th Pa U Np Pu Am Cm Bk Cf Es Fm Md No Lr	
A D L M R T X Z Ei Nu	

Hint Previous View Solution Check Answer Submit

start Search Desktop 10:26 AM

Agenda

- ❑ **Opening Remarks** - Dr. Christine W. Curtis, Senior Vice Provost
- ❑ **Introductions** – Dr. William F. Hogue, VP & Chief Information Officer
- ❑ **Horizon 2010, Emerging Technologies** - Chris Byrd
- ❑ **Report from the Educause Learning Institute** – Linda Mihalik
- ❑ **Accessing Special Collections** - Kate Boyd
- ❑ **Skype; Adobe Connect** - Kim Connolly
- ❑ **Blackboard** - Chris Brown
- ❑ **Technology in the Graphic Design Creative Process** - Marius Valdes
- ❑ **Second Life** - Sam Hastings and Dr. Feili Tu
- ❑ **Facebook, Skype** - Jodi Salter
- ❑ **Virtual Classrooms and Audio/Visual Assessment** - Tena Crews
- ❑ **Apple Technologies on Campus** - Michele Dames